

LEA Name : Kennett Consolidated SD
Address : 300 East South Street
Kennett Square , PA 19348

County : Chester
AUN Number : 124154003
LEA Type : SD

Annual Financial Report Accuracy Certification Statement

For Fiscal Year Ending
6/30/2022

Pennsylvania Department of Education
&
Office of Comptroller Operations

PDE-2056: Intermediate Unit

PDE-2057: School District, AVTS/CTC, Charter School,
and Special Program Jointure


CERTIFICATION: By signing this page I agree that the electronic data submitted is a complete and accurate statement of the financial operations and status of the local education agency for the fiscal year. It has been prepared in accordance with generally accepted accounting principles and established Commonwealth of PA reporting guidelines.



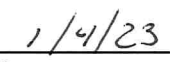
Chief School Administrator Signature



Date



Board Secretary Signature



Date

Penny L Shaffer

Contact Person

pshaffer@kcsd.org

Contact Person E-mail Address

(610)444-2053 Ext :

Contact Person Telephone Number

(610)444-6614

Contact Person Fax Number

Audit Certification
Annual Financial Report:
For Fiscal Year Ending **6/30/2022**
(Pursuant to PA School Code Section 218(b))

LEA Name : Kennett Consolidated SD
AUN Number : 124154003
County : Chester

Audit Certification Due: 12/31/2022

This certification is applicable to the Annual Financial Report data submitted through the Consolidated Financial Reporting System (CFRS).

CERTIFICATION: By signing this page I agree that the financial statements of the school have been properly audited as noted above pursuant to Article XXIV, and in the auditor's professional opinion, the Annual Financial Report (PDE-2057) submitted through CFRS is materially consistent with the audited financial statements.

Chief School Administrator

Signature

Date

4/17/2022

Board Secretary

Signature

Date

11/16/2022

Penny L Shaffer

Contact Person

pshaffer@kcsd.org

Contact Person E-mail Address

(610)444-2053

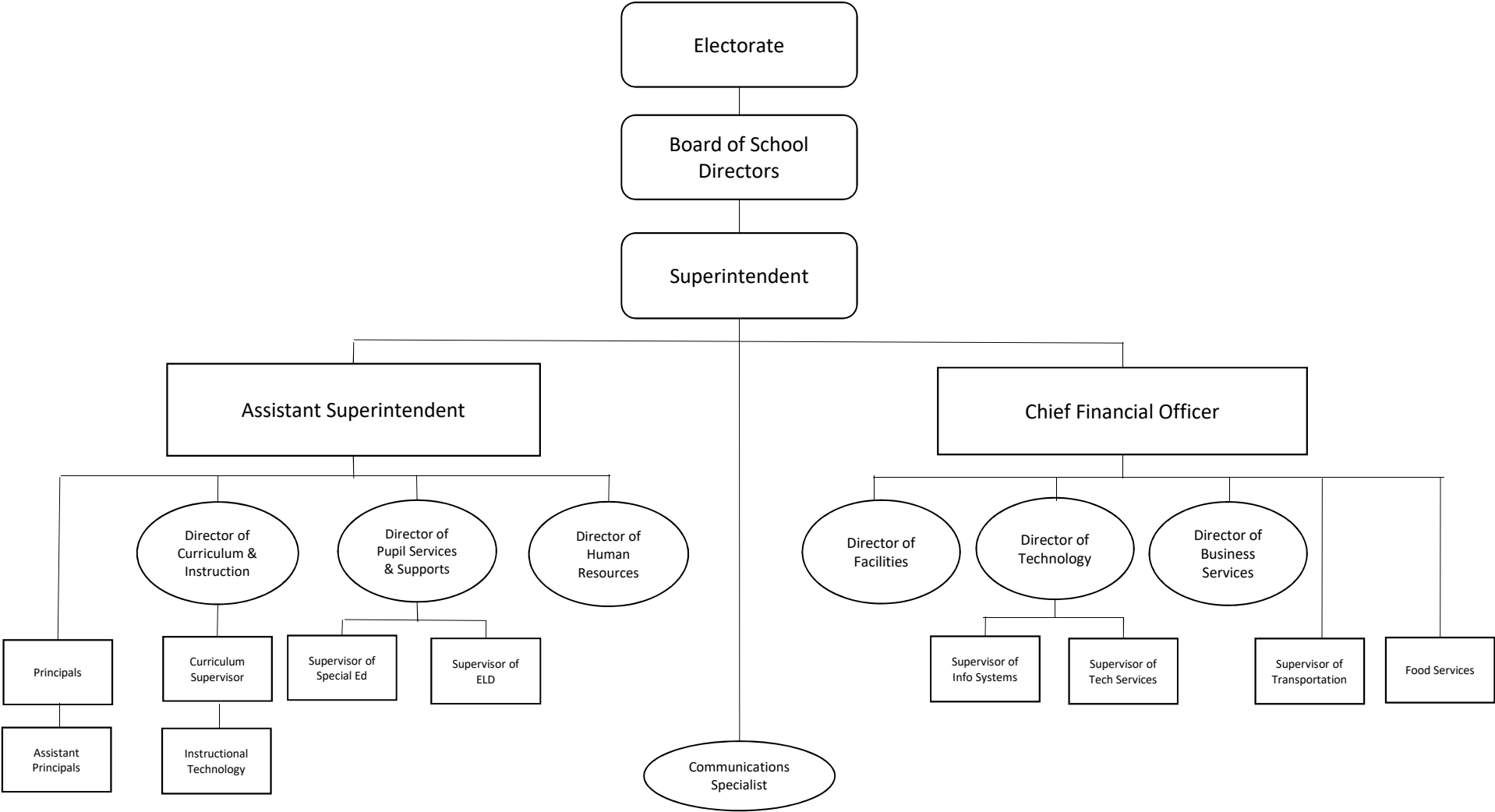
Ext :

Contact Person Telephone Number

(610)444-6614

Contact Person Fax Number

KENNETT CONSOLIDATED SCHOOL DISTRICT ORGANIZATIONAL CHART



KENNETT CONSOLIDATED SCHOOL DISTRICT

Section FINANCESTitle Capital Asset PolicyDate Adopted November 10, 2003

GUIDE		REFERENCE
	<p style="text-align: center;">620. CAPITAL ASSET POLICY</p> <p>1. <u>Purpose</u> The Kennett Consolidated School District Capital Asset Policy follows the requirements set forth by the Governmental Accounting Standards Board Statement No. 34 as it pertains to Capital Asset Reporting.</p> <p>2. <u>Definition</u> The policy applies to Kennett Consolidated School District's acquisition and depreciation of capital assets. Capital assets include land; improvements to land; easements; buildings and building additions; building improvements; furniture; fixtures; machinery and equipment; vehicles; works of art and historical treasures; and infrastructure. Capital assets are tangible and intangible assets used in operations and have initial useful lives extending beyond a single reporting period. Equipment will not change its original shape, appearance, or character with use; and it can be expected to last more than one year with reasonable care and maintenance.</p> <p>3. <u>Authority</u> Participation of the school entity in any such activity shall be in accordance with Board policy.</p> <p>4. <u>Delegation of Authority</u> The Board of School Directors delegates to the Director of Business Administration and/or Board Treasurer the responsibility to coordinate the compilation and preparation of all information necessary to implement this policy. The Director of Business Administration and/or Board Treasurer shall be responsible for implementation of the necessary procedures to establish and maintain a capital asset inventory.</p> <p>5. <u>Guidelines</u> CAPITAL ASSET ADDITION OVERVIEW A. Purchased capital assets greater than \$10,000 (except group assets) should be recorded at historical/original cost. The cost of a capital asset should include capitalized interest and ancillary charges</p>	

GUIDE		REFERENCE
	<p>necessary to place the asset into service. Ancillary charges include costs that are directly attributable to asset acquisition, such as freight and transportation charges, site preparation costs, and professional fees.</p> <p>Group purchases of assets greater than \$10,000 (except technology who maintains their own inventory) may be recorded at historical cost.</p> <p>Food service - cafeteria, kitchen appliances, and food service equipment may be capitalized when individual items equal or exceed a threshold of \$3,000 and may be capitalized as a unit upon purchase when the individual components are less than the capitalization threshold but in the aggregate meet or exceed the threshold of \$3,000 or such dollar threshold that is deemed appropriate by the administration.</p> <p>Capital assets should be depreciated over their useful lives as determined for each asset class. Land and some land improvements are considered inexhaustible and are therefore not subject to depreciation.</p> <p>B. If determining historical costs is not practical because of inadequate records, reporting should be based on estimates of original cost at the date of construction or purchase.</p> <p>C. Depending upon the information available and the category of the asset, fixed asset records should include all or part of the following:</p> <ul style="list-style-type: none"> Estimated Useful Life Acquisition Date Asset Class Accumulated Depreciation Depreciation Expense Description Depreciation Method Serial Number Cost Location or Functional Area <p>DONATIONS</p> <p>Donated capital assets should be reported at fair market value plus ancillary charges, if any, at the time of donation. Donated assets are depreciated over their useful lives as determined for each asset class. If</p>	

GUIDE		REFERENCE
	<p>determining historical costs is not practical because of inadequate records, reporting should be based on estimates of fair market value at the date of donation.</p> <p>COLLECTIONS</p> <p>A. Works of art, historical treasures, and similar assets should be capitalized at their historical cost or fair value at date of donation (estimated if necessary) whether they are held as individual items or in a collection.</p> <p>B. Capitalized collections or individual items that are exhaustible should be depreciated over their useful lives. Depreciation is not required for collections or individual items that are inexhaustible.</p> <p>INFRASTRUCTURE</p> <p><i>Definition:</i> Infrastructure assets are long-lived capital assets that normally are stationary in nature and can normally be preserved for a significantly greater number of years than most capital assets. Infrastructure includes roads, electrical distribution systems, street lighting, water wells, parking lots, sidewalks, etc.</p> <p>A. Infrastructure assets should be depreciated over their useful lives.</p> <p>B. Routine repairs and maintenance costs should be charged to operations as incurred. Expenditures that extend the useful life of the infrastructure should be capitalized as part of the asset and depreciated over the newly established useful life.</p> <p>USEFUL LIVES</p> <p>Useful lives of fixed assets relate to the life expectancy as used by the specific governmental unit. The following may be used to assist the District in estimating the useful life of a capital asset:</p>	

GUIDE			REFERENCE
	<u>Asset Class</u>	<u>Years</u>	
	Land	N/A	
	Land Improvements	25	
	Building by Location	50	
	Building Improvements	20	
	Furniture & Equipment	15	
	Technology	5	
	Kitchen	20	
	Library Books	N/A	
	Licensed Vehicles	10	
	DEPRECIATION EXPENSE		
	A. Depreciation expense should be reported in the statement of activities. Depreciation expense that can be specifically identified with a function should be included as a direct expense. Depreciation expense for shared facilities should be ratably included in direct expenses for each function.		
	B. Depreciation is allocated to expense in a systematic and rational manner. The straight-line, half-year convention method of depreciation is used.		
	C. Depreciation may be calculated for a class of assets, a network of assets, or individual assets.		

<u>Val Number</u>	<u>Description</u>	<u>Justification</u>
30160	Federal IDEA revenue has been reported in revenue code 8512 or 8513 rather than in code 6832 as pass thru funds. Please make corrections or provide an explanation. Receipt of IDEA funded COVID 19 SECIM grants correctly recorded to 8512 can be noted in the justification. REV8512: \$18,658.00 REV8513: \$0.00	IDEA COVID 19 SECIM Grant.
42420	Expenditure Detail: Total current year 2700-513 expenditure varies from prior year by 10%. Correct the data or enter a justification. 2700-513, AFR Exp Detail: \$4,515,422.90 2700-513, PY AFR Amount: \$4,085,566.07	Prior Year 2020-2021 still remote for part of the year. 2021-2022 first full year on campus after COVID.
50410	SESS - 2140 Psychological Services: SESS Schedule amounts for Special Education vary from prior year by 40% or more. Correct the data or enter a justification. SESS Schedule 2140: \$736,610.34 Prior Year SESS Schedule 2140: \$486,854.66	Added additional Mental Health Therapists along with prior year partially remote.
50460	SESS - 2420 Medical Services: SESS Schedule amounts for Special Education vary from prior year by 40% or more. Correct the data or enter a justification. SESS Schedule 2420: \$1,036.17 Prior Year SESS Schedule 2420: \$632.07	Prior year partially remote.

LEA : 124154003 Kennett Consolidated SD

Printed 1/20/2023 2:18:19 PM

Amounts Expressed in Whole Dollars		<u>General Fund</u> <u>(10)</u>	<u>Student Sponsored</u> <u>Activity Fund</u> <u>(21)</u>	<u>Public Purpose Trust</u> <u>(27)</u>	<u>Other Compt Approved</u> <u>(28)</u>	<u>Athletic / Activity</u> <u>(29)</u>
Assets And Deferred Outflows Of Resources						
Assets						
0100	Cash and Cash Equivalents	3,392,759				
0110	Investments	18,330,619				
0120	Taxes Receivable	1,352,721				
0130	Due From Other Funds					
0141	Due From Other Governments	2,695,777				
0142	State Revenue Receivable					
0143	Federal Revenue Receivable					
0145	Other Intergovernmental Revenue Receivable					
0146	Due from Primary Government					
0147	Due from Component Unit					
0150	Other Receivables	22,341				
0170	Inventories					
0180	Prepaid Expenses (Expenditures)					
0190	Other Current Assets					
Total Assets		\$25,794,217				
0910	Deferred Outflows of Resources					
Total Assets And Deferred Outflows Of Resources		\$25,794,217				

LEA : 124154003 Kennett Consolidated SD

Printed 1/20/2023 2:18:19 PM

Amounts Expressed in Whole Dollars		<u>Capital Reserve (690.</u> <u>1850)</u> <u>(31)</u>	<u>Capital Reserve (1431)</u> <u>(32)</u>	<u>Other Capital Projects</u> <u>Fund</u> <u>(39)</u>	<u>Debt Service</u> <u>(40)</u>	<u>Permanent</u> <u>(90)</u>
Assets And Deferred Outflows Of Resources						
Assets						
0100	Cash and Cash Equivalents		1,237,995			
0110	Investments		16,012,485			
0120	Taxes Receivable					
0130	Due From Other Funds		7,637,841			
0141	Due From Other Governments					
0142	State Revenue Receivable					
0143	Federal Revenue Receivable					
0145	Other Intergovernmental Revenue Receivable					
0146	Due from Primary Government					
0147	Due from Component Unit					
0150	Other Receivables					
0170	Inventories					
0180	Prepaid Expenses (Expenditures)					
0190	Other Current Assets					
Total Assets			\$24,888,321			
0910	Deferred Outflows of Resources					
Total Assets And Deferred Outflows Of Resources			\$24,888,321			

LEA : 124154003 Kennett Consolidated SD

Printed 1/20/2023 2:18:19 PM

Amounts Expressed in Whole Dollars		<u>Total Governmental</u> <u>Funds</u>
Assets And Deferred Outflows Of Resources		
Assets		
0100	Cash and Cash Equivalents	4,630,754
0110	Investments	34,343,104
0120	Taxes Receivable	1,352,721
0130	Due From Other Funds	7,637,841
0141	Due From Other Governments	2,695,777
0142	State Revenue Receivable	
0143	Federal Revenue Receivable	
0145	Other Intergovernmental Revenue Receivable	
0146	Due from Primary Government	
0147	Due from Component Unit	
0150	Other Receivables	22,341
0170	Inventories	
0180	Prepaid Expenses (Expenditures)	
0190	Other Current Assets	
Total Assets		\$50,682,538
0910	Deferred Outflows of Resources	
Total Assets And Deferred Outflows Of Resources		\$50,682,538

LEA : 124154003 Kennett Consolidated SD

Printed 1/20/2023 2:18:19 PM

Amounts Expressed in Whole Dollars	<u>General Fund</u> <u>(10)</u>	<u>Student Sponsored</u> <u>Activity Fund</u> <u>(21)</u>	<u>Public Purpose Trust</u> <u>(27)</u>	<u>Other Compt Approved</u> <u>(28)</u>	<u>Athletic / Activity</u> <u>(29)</u>
Liabilities And Deferred Inflows Of Resources And Fund Balances					
Liabilities					
0400 Due to Other Funds	7,637,841				
0411 Due to Other Governments					
0412 Due to Primary Government					
0413 Due to Component Unit					
0420 Accounts Payable	1,876,422				
0430 Contracts Payable					
0440 Current Portion of Long-Term Debt					
0450 Short-Term Payables					
0461 Accrued Salaries and Benefits	7,821,041				
0462 Payroll Deductions and Withholding					
0480 Unearned Revenues					
0490 Other Current Liabilities					
Total Liabilities	\$17,335,304				
0950 Deferred Inflows of Resources	1,008,846				
Fund Balances					
0810 Nonspendable Fund Balance					
0820 Restricted Fund Balance					
0830 Committed Fund Balance					
0840 Assigned Fund Balance					
0850 Unassigned Fund Balance	7,450,067				
Total Fund Balances	\$7,450,067				
Total Liabilities, Deferred Inflows Of Resources And Fund Balances	\$25,794,217				

LEA : 124154003 Kennett Consolidated SD

Printed 1/20/2023 2:18:19 PM

Amounts Expressed in Whole Dollars		<u>Capital Reserve (690.</u> <u>1850)</u> <u>(31)</u>	<u>Capital Reserve (1431)</u> <u>(32)</u>	<u>Other Capital Projects</u> <u>Fund</u> <u>(39)</u>	<u>Debt Service</u> <u>(40)</u>	<u>Permanent</u> <u>(90)</u>
Liabilities And Deferred Inflows Of Resources And Fund Balances						
Liabilities						
0400	Due to Other Funds					
0411	Due to Other Governments					
0412	Due to Primary Government					
0413	Due to Component Unit					
0420	Accounts Payable		977,294			
0430	Contracts Payable					
0440	Current Portion of Long-Term Debt					
0450	Short-Term Payables					
0461	Accrued Salaries and Benefits					
0462	Payroll Deductions and Withholding					
0480	Unearned Revenues					
0490	Other Current Liabilities					
Total Liabilities			\$977,294			
0950	Deferred Inflows of Resources					
Fund Balances						
0810	Nonspendable Fund Balance					
0820	Restricted Fund Balance		23,911,027			
0830	Committed Fund Balance					
0840	Assigned Fund Balance					
0850	Unassigned Fund Balance					
Total Fund Balances			\$23,911,027			
Total Liabilities, Deferred Inflows Of Resources And Fund Balances			\$24,888,321			

LEA : 124154003 Kennett Consolidated SD

Printed 1/20/2023 2:18:19 PM

Amounts Expressed in Whole Dollars		<u>Total Governmental</u> <u>Funds</u>
Liabilities And Deferred Inflows Of Resources And Fund Balances		
Liabilities		
0400 Due to Other Funds		7,637,841
0411 Due to Other Governments		
0412 Due to Primary Government		
0413 Due to Component Unit		
0420 Accounts Payable		2,853,716
0430 Contracts Payable		
0440 Current Portion of Long-Term Debt		
0450 Short-Term Payables		
0461 Accrued Salaries and Benefits		7,821,041
0462 Payroll Deductions and Withholding		
0480 Unearned Revenues		
0490 Other Current Liabilities		
Total Liabilities		\$18,312,598
0950 Deferred Inflows of Resources		1,008,846
Fund Balances		
0810 Nonspendable Fund Balance		
0820 Restricted Fund Balance		23,911,027
0830 Committed Fund Balance		
0840 Assigned Fund Balance		
0850 Unassigned Fund Balance		7,450,067
Total Fund Balances		\$31,361,094
Total Liabilities, Deferred Inflows Of Resources And Fund Balances		\$50,682,538

Amounts Expressed in Whole Dollars	<u>General Fund</u> <u>(10)</u>	<u>Student Sponsored</u> <u>Activity Fund</u> <u>(21)</u>	<u>Public Purpose Trust</u> <u>(27)</u>	<u>Other Compt Approved</u> <u>(28)</u>	<u>Athletic / Activity</u> <u>(29)</u>
Revenues					
6000 Revenue from Local Sources	74,744,169				
7000 Revenue from State Sources	18,511,532				
8000 Revenue from Federal Sources	3,234,169				
Total Revenues	\$96,489,870				
Expenditures					
1000 Instruction	50,023,444				
2000 Support Services	29,153,236				
3000 Operation of Non-Instructional Services	1,596,549				
4000 Facilities Acquisition, Construction and Improvement Services	214,947				
5110 Debt Service	7,505,827				
5130 Refund of Prior Year Revenues / Receipts					
5140 Leases	56,868				
Total Expenditures	\$88,550,871				
Excess (Deficiency) Of Revenues Over Expenditures	\$7,938,999				
Other Financing Sources (Uses)					
9110 Face Value of Bonds Issued					
9120 Proceeds from Refunding of Bonds					
9130 Bond Premiums					
9200 Proceeds from Extended-Term Financing and Leases					
9300 Interfund Transfers - IN					
9400 Sale of or Compensation for Loss of Fixed Assets					
9710 Transfers from Component Units					
9720 Transfers from Primary Governments					
9910 Other Financing Sources Not Listed in the 9000 Series					
9990 Insurance Recoveries					
5120 Debt Service – Refunded Bonds					
5150 Bond Discounts					
5200 Interfund Transfers – Out	7,707,841				
5300 Transfers Out to Component Units/Primary Governments					
Total Other Financing Sources (Uses)	(\$7,707,841)				

Amounts Expressed in Whole Dollars		<u>Capital Reserve (690.1850)</u> <u>(31)</u>	<u>Capital Reserve (1431)</u> <u>(32)</u>	<u>Other Capital Projects</u> <u>Fund</u> <u>(39)</u>	<u>Debt Service</u> <u>(40)</u>	<u>Permanent</u> <u>(90)</u>
Revenues						
6000	Revenue from Local Sources		26,991			
7000	Revenue from State Sources					
8000	Revenue from Federal Sources					
Total Revenues			\$26,991			
Expenditures						
1000	Instruction					
2000	Support Services					
3000	Operation of Non-Instructional Services					
4000	Facilities Acquisition, Construction and Improvement Services		5,621,173			
5110	Debt Service					
5130	Refund of Prior Year Revenues / Receipts					
5140	Leases					
Total Expenditures			\$5,621,173			
Excess (Deficiency) Of Revenues Over Expenditures			(\$5,594,182)			
Other Financing Sources (Uses)						
9110	Face Value of Bonds Issued					
9120	Proceeds from Refunding of Bonds					
9130	Bond Premiums					
9200	Proceeds from Extended-Term Financing and Leases					
9300	Interfund Transfers - IN		7,707,841			
9400	Sale of or Compensation for Loss of Fixed Assets					
9710	Transfers from Component Units					
9720	Transfers from Primary Governments					
9910	Other Financing Sources Not Listed in the 9000 Series					
9990	Insurance Recoveries					
5120	Debt Service – Refunded Bonds					
5150	Bond Discounts					
5200	Interfund Transfers – Out					
5300	Transfers Out to Component Units/Primary Governments					
Total Other Financing Sources (Uses)			\$7,707,841			

Amounts Expressed in Whole Dollars		<u>Total Governmental Funds</u>
Revenues		
6000	Revenue from Local Sources	74,771,160
7000	Revenue from State Sources	18,511,532
8000	Revenue from Federal Sources	3,234,169
Total Revenues		\$96,516,861
Expenditures		
1000	Instruction	50,023,444
2000	Support Services	29,153,236
3000	Operation of Non-Instructional Services	1,596,549
4000	Facilities Acquisition, Construction and Improvement Services	5,836,120
5110	Debt Service	7,505,827
5130	Refund of Prior Year Revenues / Receipts	
5140	Leases	56,868
Total Expenditures		\$94,172,044
Excess (Deficiency) Of Revenues Over Expenditures		\$2,344,817
Other Financing Sources (Uses)		
9110	Face Value of Bonds Issued	
9120	Proceeds from Refunding of Bonds	
9130	Bond Premiums	
9200	Proceeds from Extended-Term Financing and Leases	
9300	Interfund Transfers - IN	7,707,841
9400	Sale of or Compensation for Loss of Fixed Assets	
9710	Transfers from Component Units	
9720	Transfers from Primary Governments	
9910	Other Financing Sources Not Listed in the 9000 Series	
9990	Insurance Recoveries	
5120	Debt Service – Refunded Bonds	
5150	Bond Discounts	
5200	Interfund Transfers – Out	7,707,841
5300	Transfers Out to Component Units/Primary Governments	
Total Other Financing Sources (Uses)		\$0

Amounts Expressed in Whole Dollars		<u>General Fund</u> <u>(10)</u>	<u>Student Sponsored</u> <u>Activity Fund</u> <u>(21)</u>	<u>Public Purpose Trust</u> <u>(27)</u>	<u>Other Compt Approved</u> <u>(28)</u>	<u>Athletic / Activity</u> <u>(29)</u>
Special And Extraordinary Items						
9920	Special Items – Gains					
9930	Extraordinary Items – Gains					
5520	Special Items – Losses					
5530	Extraordinary Items – Losses					
Net Change In Fund Balances		\$231,158				
Fund Balance						
0001	Fund Balance - Beginning of Fiscal Year	7,218,908				
Fund Balance - End Of Year		\$7,450,066				

Amounts Expressed in Whole Dollars		<u>Capital Reserve (690.</u> <u>1850)</u> <u>(31)</u>	<u>Capital Reserve (1431)</u> <u>(32)</u>	<u>Other Capital Projects</u> <u>Fund</u> <u>(39)</u>	<u>Debt Service</u> <u>(40)</u>	<u>Permanent</u> <u>(90)</u>
Special And Extraordinary Items						
9920	Special Items – Gains					
9930	Extraordinary Items – Gains					
5520	Special Items – Losses					
5530	Extraordinary Items – Losses					
Net Change In Fund Balances			\$2,113,659			
Fund Balance						
0001	Fund Balance - Beginning of Fiscal Year		21,797,368			
Fund Balance - End Of Year			\$23,911,027			

Amounts Expressed in Whole Dollars		<u>Total Governmental Funds</u>
Special And Extraordinary Items		
9920	Special Items – Gains	
9930	Extraordinary Items – Gains	
5520	Special Items – Losses	
5530	Extraordinary Items – Losses	
Net Change In Fund Balances		\$2,344,817
Fund Balance		
0001	Fund Balance - Beginning of Fiscal Year	29,016,276
Fund Balance - End Of Year		\$31,361,093

Amounts Expressed in Whole Dollars		<u>Food Service</u> <u>(51)</u>	<u>Child Care</u> <u>Operations</u> <u>(52)</u>	<u>Other Enterprise</u> <u>(58)</u>	<u>TOTAL</u>	<u>Internal Service</u> <u>(60)</u>
Assets And Deferred Outflows Of Resources						
Current Assets						
0100	Cash and Cash Equivalents	1,725,366			1,725,366	2,551,857
0110	Investments					3,001,413
0130	Due From Other Funds					
0141	Due From Other Governments	94,094			94,094	
0142	State Revenue Receivable					
0143	Federal Revenue Receivable					
0146	Due from Primary Government					
0147	Due from Component Unit					
0150	Other Receivables	3,076			3,076	
0170	Inventories	117,864			117,864	
0180	Prepaid Expenses (Expenditures)					
0190	Other Current Assets					
Total Current Assets		\$1,940,400			\$1,940,400	\$5,553,270
Noncurrent Assets						
0211	Land					
0212	Site Improvements (Net)					
0220	Buildings and Building Improvements (Net)					
0230	Machinery, Equipment and Furniture (Net)	638,236			638,236	
0250	Construction in Progress					
0260	Long Term Prepayments					
0290	Other Noncurrent Assets					
Total Noncurrent Assets		\$638,236			\$638,236	
0910	Deferred Outflows of Resources	213,099			213,099	
Total Assets And Deferred Outflows Of Resources		\$2,791,735			\$2,791,735	\$5,553,270

Amounts Expressed in Whole Dollars	<u>Food Service</u> <u>(51)</u>	<u>Child Care</u> <u>Operations</u> <u>(52)</u>	<u>Other Enterprise</u> <u>(58)</u>	<u>TOTAL</u>	<u>Internal Service</u> <u>(60)</u>
Liabilities And Deferred Inflows Of Resources And Net Position					
Current Liabilities					
0400 Due to Other Funds					
0411 Due to Other Governments					
0413 Due to Component Unit					
0420 Accounts Payable	402,515			402,515	808,793
0430 Contracts Payable					
0440 Current Portion of Long-Term Debt					
0450 Short-Term Payables					
0461 Accrued Salaries and Benefits					
0462 Payroll Deductions and Withholding					
0480 Unearned Revenues					
0490 Other Current Liabilities					
Total Current Liabilities	\$402,515			\$402,515	\$808,793
Noncurrent Liabilities					
0510 Bonds Payable					
0520 Extended-Term Financing Agreements Payable					
0530 Lease Obligations					
0540 Accumulated Compensated Absences	14,448			14,448	
0550 Authority Lease Obligations					
0560 Other Post-Employment Benefits (OPEB)	178,380			178,380	
0570 Net Pension Liability	921,720			921,720	
0599 Other Noncurrent Liabilities					
Total Noncurrent Liabilities	\$1,114,548			\$1,114,548	
Total Liabilities	\$1,517,063			\$1,517,063	\$808,793
0950 Deferred Inflows of Resources	220,766			220,766	
Net Position					
0791 Net Investment in Capital Assets	638,236			638,236	
0008 Restricted Net Position (0792 – 0798)					
0799 Unrestricted Net Position	415,670			415,670	4,744,477
Total Net Position	\$1,053,906			\$1,053,906	\$4,744,477
Total Liabilities And Deferred Inflows Of Resources And Net Position	\$2,791,735			\$2,791,735	\$5,553,270

Amounts Expressed in Whole Dollars		<u>Food Service</u> <u>(51)</u>	<u>Child Care Operations</u> <u>(52)</u>	<u>Other Enterprise</u> <u>(58)</u>	<u>TOTAL</u>	<u>Internal Service</u> <u>(60)</u>
Operating Revenues						
6600	Food Service Revenue	134,615			134,615	
0071	Charges for Services					8,242,950
0072	Other Operating Revenue					
Total Operating Revenues		\$134,615			\$134,615	\$8,242,950
Operating Expenses						
100	Personnel Services – Salaries	208,268			208,268	
200	Personnel Services – Employee Benefits	87,648			87,648	8,520,428
300	Purchased Professional and Technical Services					
400	Purchased Property Services					
500	Other Purchased Services	1,679,549			1,679,549	
600	Supplies	18,057			18,057	
740	Depreciation	36,942			36,942	
810	Dues and Fees					
880	Refunds of Prior Years' Receipts					
890	Miscellaneous Expenditures					
Total Operating Expenses		\$2,030,464			\$2,030,464	\$8,520,428
Operating Income (Loss)		(\$1,895,849)			(\$1,895,849)	(\$277,478)
Non Operating Revenues (Expenses)						
6500	Earnings on Investments	772			772	6,557
6920	Contributions and Donations from Private Sources					
6930	Gains or Losses on Sale of Fixed Assets					
6991	Refunds of a Prior Year Expenditure					
7000	Revenue from State Sources	113,744			113,744	
8000	Revenue from Federal Sources	2,476,859			2,476,859	
9990	Insurance Recoveries					
820	Claims and Judgments Against the LEA					
830	Interest					
TOTAL Non Operating Revenues (Expenses)		\$2,591,375			\$2,591,375	\$6,557
Income (Loss) Before Contributions And Transfers		\$695,526			\$695,526	(\$270,921)

Amounts Expressed in Whole Dollars	<u>Food Service</u> <u>(51)</u>	<u>Child Care Operations</u> <u>(52)</u>	<u>Other Enterprise</u> <u>(58)</u>	<u>TOTAL</u>	<u>Internal Service</u> <u>(60)</u>
Contributions, Transfers, and Special and Extraordinary Items					
5200 Interfund Transfers – Out					
5300 Transfers Out to Component Units/Primary Governments					
5520 Special Items – Losses					
5530 Extraordinary Items – Losses					
9300 Interfund Transfers - IN					
9500 Capital Contributions					
9700 Transfers IN From Component Units/Primary Governments					
9920 Special Items – Gains					
9930 Extraordinary Items – Gains					
Change In Net Position	\$695,526			\$695,526	(\$270,921)
0002 Net Position - Beginning of Fiscal Year	358,380			358,380	5,015,398
0003 Accounting Changes / Residual Equity Transfers					
Net Position - End Of Year	\$1,053,906			\$1,053,906	\$4,744,477

LEA : 124154003 Kennett Consolidated SD

Printed 1/20/2023 2:18:33 PM

Amounts Expressed in Whole Dollars		<u>Food Service</u> <u>(51)</u>	<u>Child Care Operations</u> <u>(52)</u>	<u>Other Enterprise</u> <u>(58)</u>	<u>TOTAL</u>	<u>Internal Service(60)</u>
Cash Flows From Operating Activities						
0011	Cash Receipts From Users	132,152			132,152	8,242,950
0012	Cash Receipts From Assessments Made to Other Funds					
0013	Cash Receipts From Earnings on Investments					
0014	Cash Receipts From Other Operating Revenue					
0015	Cash Payments To Employees For Services	349,503			349,503	
0016	Cash Payments For Insurance Claims					8,425,436
0017	Cash Payments To Suppliers For Goods and Services	1,403,286			1,403,286	
0018	Cash Payments For Other Operating Expenses					
Net Cash Provided By (Used For) Operating Activities		(\$1,620,637)			(\$1,620,637)	(\$182,486)
Cash Flows From Non-Capital Financing Activities						
0021	Receipts From Local Sources - 6000					
0022	Receipts From State Sources - 7000	107,288			107,288	
0023	Receipts From Federal Sources -8000	2,334,877			2,334,877	
0024	Notes and Loans Received (Repaid)					
0025	Interest Paid on Notes/Loans - 5100-830					
0026	Operating Transfers In (Out)/Residual Equity Trans					
0027	Operating Transfers In (Out) Primary Government / Comp Unit					
0028	Receipts From Refund of Prior Year Expenditures - 6991					
0029	Special and Extraordinary Gains (losses)					
0030	Receipts from Insurance Recoveries -9990					
Net Cash Prov By (Used for) Non-Capital Financing Activities		\$2,442,165			\$2,442,165	
Cash Flows From Capital and Related Financing Activities						
0031	Payments For Fac Acq, Const, and Imp - 4000	(27,746)			(27,746)	
0032	Gain / (Loss) on Sale of Fixed Assets - 6930					
0033	Proceeds From Extended Term Financing - 9200					
0034	Principal Paid on Financing Agreements					
0035	Interest Paid on Financing Agreements - 5100-830					
0036	(Inc) Dec in Contributed Capital					
Net Cash Prov By (Used for) Capital and Related Financing Activities		(\$27,746)			(\$27,746)	
Cash Flows From Investing Activities						
0041	Earnings on Investments - 6500	772			772	6,557
0042	Purchase of Inv Securities / Deposits to Inv Pools					(1,753,327)
0043	Receipts From Investment Pool Withdrawals					
0044	Proceeds from Sale and Maturity of Inv Securities					

LEA : 124154003 Kennett Consolidated SD

Printed 1/20/2023 2:18:33 PM

0045 Loans Received (Paid)

Net Cash Prov By (Used for) Investing Activities	\$772	\$772	(\$1,746,770)
--	-------	-------	---------------

LEA : 124154003 Kennett Consolidated SD

Printed 1/20/2023 2:18:33 PM

	<u>Food Service</u> <u>(51)</u>	<u>Child Care Operations</u> <u>(52)</u>	<u>Other Enterprise</u> <u>(58)</u>	<u>TOTAL</u>	<u>Internal Service</u> <u>(60)</u>
Net Increase (Decrease) in Cash Flows	794,554			794,554	(1,929,256)
0004 Cash and Cash Equivalents Beginning of Year	930,812			930,812	4,481,113
Cash and Cash Equivalents at Year End	\$1,725,366			\$1,725,366	\$2,551,857
Reconciliation of Operating Income (Loss) To Net Cash Provided by (Used For) Operating Activities					
0005 Operating Income (Loss) per REP	(1,895,849)			(1,895,849)	(277,478)
Adjustments					
0051 Depreciation and Net Amortization	36,942			36,942	
0052 Provision for Uncollectible Accounts					
0053 Other Adjustments	141,982			141,982	
Effect of Changes in Assets, Liabilities, Deferred Outflows and Deferred Inflows					
0054 (Inc) Dec In Accounts Receivable (0120-0150)	(2,463)			(2,463)	
0055 Advances to Other Funds (0160)					
0056 (Inc) Dec in Inventories (0170)	(40,147)			(40,147)	
0057 (Inc) Dec in Prepaid Expenses (0180)					
0058 (Inc) Dec in Other Current or Noncurrent Assets					
0064 Deferred Outflows (0910)	10,650			10,650	
0059 Inc (Dec) in Accounts Payable (0400-0450)	192,484			192,484	94,992
0060 Inc (Dec) in Accrued Salaries/Benefits (0461)					
0065 Inc (Dec) in Net Pension Liabilities (0570)	(183,700)			(183,700)	
0066 Inc (Dec) in Other Postemp Benefit Oblig (0560)	(8,620)			(8,620)	
0061 Inc (Dec) in Payroll Deductions/Withholding (0462)					
0062 Inc (Dec) in Unearned Revenue (0480)					
0063 Inc (Dec) in Other Current or Noncurrent Liabilities	(3,430)			(3,430)	
0067 Deferred Inflows (0950)	131,514			131,514	
Total Adjustments	\$275,212			\$275,212	\$94,992
Cash Provided By (Used for) Total	(\$1,620,637)			(\$1,620,637)	(\$182,486)

COMBINED STATEMENT OF CASH FLOWS
SCHEDULE OF NONCASH INVESTING, CAPITAL, AND FINANCING ACTIVITIES

Explanation of Transaction and Balance Sheet Effect	Amount
Donated Commodities	141,982
Total	\$141,982

LEA : 124154003 Kennett Consolidated SD

Printed 1/20/2023 2:18:34 PM

Amounts Expressed in Whole Dollars		<u>Private Purpose Trust</u> <u>(71)</u>	<u>Investment Trust</u> <u>(72)</u>	<u>Pension Trust</u> <u>(73)</u>	<u>Student Activity Custodial</u> <u>(81)</u>
Assets And Deferred Outflows Of Resources					
Assets					
0100	Cash and Cash Equivalents	180,879			80,924
0110	Investments				
0130	Due From Other Funds				
0140	Due from Other Governments, Primary Government and Component Units				
0150	Other Receivables				
0170	Inventories				
0180	Prepaid Expenses (Expenditures)				
0190	Other Current Assets				
0220	Buildings and Building Improvements (Net)				
0230	Machinery, Equipment and Furniture (Net)				
Total Assets		\$180,879			\$80,924
0910	Deferred Outflows of Resources				
Total Assets And Deferred Outflows Of Resources		\$180,879			\$80,924

LEA : 124154003 Kennett Consolidated SD

Printed 1/20/2023 2:18:34 PM

Amounts Expressed in Whole Dollars		<u>Other Custodial</u> <u>(89)</u>	<u>Fiduciary Component Units</u> <u>(98)</u>	<u>Total Fiduciary Funds</u>
Assets And Deferred Outflows Of Resources				
Assets				
0100	Cash and Cash Equivalents			261,803
0110	Investments			
0130	Due From Other Funds			
0140	Due from Other Governments, Primary Government and Component Units			
0150	Other Receivables			
0170	Inventories			
0180	Prepaid Expenses (Expenditures)			
0190	Other Current Assets			
0220	Buildings and Building Improvements (Net)			
0230	Machinery, Equipment and Furniture (Net)			
Total Assets				\$261,803
0910	Deferred Outflows of Resources			
Total Assets And Deferred Outflows Of Resources				\$261,803

LEA : 124154003 Kennett Consolidated SD

Printed 1/20/2023 2:18:34 PM

Amounts Expressed in Whole Dollars		<u>Private Purpose Trust</u> <u>(71)</u>	<u>Investment Trust</u> <u>(72)</u>	<u>Pension Trust</u> <u>(73)</u>	<u>Student Activity Custodial</u> <u>(81)</u>
Liabilities, Deferred Inflows Of Resources And Net Position					
Liabilities					
0400	Due to Other Funds				
0410	Due to Other Governments, Primary Government and Component Units				
0420	Accounts Payable				
0430	Contracts Payable				
0450	Short-Term Payables				
0460	Payroll Accruals and Withholdings				
0480	Unearned Revenues				
0490	Other Current Liabilities				
Total Liabilities					
0950	Deferred Inflows of Resources				
Net Position					
0791	Net Investment in Capital Assets				
0009	Restricted Net Position (0792 – 0798)	180,879			80,924
0799	Unrestricted Net Position				
Total Net Position		\$180,879			\$80,924
Total Liabilities, Deferred Inflows Of Resources And Net Position		\$180,879			\$80,924

LEA : 124154003 Kennett Consolidated SD

Printed 1/20/2023 2:18:34 PM

Amounts Expressed in Whole Dollars		<u>Other Custodial</u> <u>(89)</u>	<u>Fiduciary Component Units</u> <u>(98)</u>	<u>Total Fiduciary Funds</u>
Liabilities, Deferred Inflows Of Resources And Net Position				
Liabilities				
0400	Due to Other Funds			
0410	Due to Other Governments, Primary Government and Component Units			
0420	Accounts Payable			
0430	Contracts Payable			
0450	Short-Term Payables			
0460	Payroll Accruals and Withholdings			
0480	Unearned Revenues			
0490	Other Current Liabilities			
Total Liabilities				
0950	Deferred Inflows of Resources			
Net Position				
0791	Net Investment in Capital Assets			
0009	Restricted Net Position (0792 – 0798)			261,803
0799	Unrestricted Net Position			
Total Net Position				\$261,803
Total Liabilities, Deferred Inflows Of Resources And Net Position				\$261,803

Amounts Expressed in Whole Dollars	<u>Private Purpose Trust</u> <u>(71)</u>	<u>Investment Trust</u> <u>(72)</u>	<u>Pension Trust</u> <u>(73)</u>	<u>Student Activity</u> <u>Custodial</u> <u>(81)</u>	<u>Other Custodial</u> <u>(89)</u>	<u>Fiduciary Component</u> <u>Units</u> <u>(98)</u>
Additions						
0091 Gifts and Contributions	7,256			135,065		
0095 Net Investment Earnings						
0092 Other Additions						
Deductions						
0093 Scholarships Awarded	54,520					
0094 Other Deductions				129,530		
Change In Net Position	(\$47,264)			\$5,535		
0006 Net Position – Beginning of Fiscal Year	228,143			75,389		
0007 Net Position Held in Trust for Pension Benefits						
Net Position - End of Fiscal Year	\$180,879			\$80,924		

Amounts Expressed in Whole Dollars		<u>Total Fiduciary</u>
		<u>Funds</u>
Additions		
0091	Gifts and Contributions	142,321
0095	Net Investment Earnings	
0092	Other Additions	
Deductions		
0093	Scholarships Awarded	54,520
0094	Other Deductions	129,530
Change In Net Position		(\$41,729)
0006	Net Position – Beginning of Fiscal Year	303,532
0007	Net Position Held in Trust for Pension Benefits	
Net Position - End of Fiscal Year		\$261,803

	Revenue Reported In Current Year	Current Year Tax Accrual	Prior Year Tax Accrual	Taxes Collected In Current Year
<u>Revenue from Local Sources</u>				
6111 Current Real Estate Taxes	62,325,366.82			62,325,366.82
6112 Interim Real Estate Taxes	1,780,331.43			1,780,331.43
6113 Public Utility Realty Taxes	66,722.27			66,722.27
6151 Current Act 511 Earned Income Taxes	5,713,017.83	64,992.12	53,842.37	5,701,868.08
6153 Current Act 511 Real Estate Transfer Taxes	1,832,831.89	102,107.90	131,558.19	1,862,282.18
6411 Delinquent Real Estate Taxes	1,979,103.17	160,879.17	224,300.10	2,042,524.10
6500 Earnings on Investments	27,588.11			
6700 Revenues from LEA Activities	49,006.00			
6831 Federal Revenue Received from Other Pennsylvania Public LEAs	171,624.76			
6832 Federal IDEA Revenue Received as Pass Through	563,088.84			
6910 Rentals	67,107.50			
6920 Contributions and Donations from Private Sources	108,183.21			
6944 Receipts from Other LEAs in Pennsylvania - Education	510.20			
6961 Transportation Services Provided Other Pennsylvania LEAs	38,219.51			
6991 Refunds of a Prior Year Expenditure	358.00			
6999 Other Revenues Not Specified Above	21,109.77			
TOTAL Revenue from Local Sources	\$74,744,169.31	\$327,979.19	\$409,700.66	\$73,779,094.88

	Revenue Reported In Current Year			
<u>Revenue from State Sources</u>				
7111 Basic Education Funding-Formula	6,362,412.80			
7112 Basic Education Funding-Social Security	1,202,125.88			
7250 Migratory Children	3,079.00			
7271 Special Education funds for School-Aged Pupils	1,836,693.98			
7311 Pupil Transportation Subsidy	933,073.00			
7312 Nonpublic and Charter School Pupil Transportation Subsidy	77,385.00			
7320 Rental and Sinking Fund Payments / Building Reimbursement Subsidy	526,802.68			
7330 Health Services (Medical, Dental, Nurse, Act 25)	80,382.76			
7340 State Property Tax Reduction Allocation	1,476,813.28			
7505 Ready to Learn Block Grant	400,617.00			
7820 State Share of Retirement Contributions	5,612,146.43			
TOTAL Revenue from State Sources	\$18,511,531.81			

	Revenue Reported In Current Year			
<u>Revenue from Federal Sources</u>				
8512 IDEA, Part B	18,658.00			
8514 NCLB, Title I - Improving the Academic Achievement of the Disadvantaged	703,092.84			
8515 NCLB, Title II - Preparing, Training and Recruiting High Quality Teachers and Principals	96,183.60			
8516 NCLB, Title III - Language Instruction for Limited English Proficient and Immigrant Students	109,585.46			
8517 NCLB, Title IV - 21st Century Schools	54,851.96			
8741 Elementary and Secondary School Emergency Relief Fund (ESSER)	9,027.60			
8743 ESSER II - Elementary and Secondary School Emergency Relief Fund	1,554,521.02			
8744 ARP ESSER - Elementary and Secondary School Emergency Relief Fund	662,418.91			
8751 ARP ESSER Learning Loss	4,186.00			
8820 Medical Assistance Reimbursement for Administrative Claiming (Quarterly) Program	21,643.42			
TOTAL Revenue from Federal Sources	\$3,234,168.81			
TOTAL FROM ALL SOURCES	\$96,489,869.93	\$327,979.19	\$409,700.66	\$73,779,094.88

LEA : 124154003 Kennett Consolidated SD

Printed 1/20/2023 2:18:42 PM

	<u>General Fund (10)</u>	<u>Student Sponsored Activity Fund (21)</u>	<u>Public Purpose Trust (27)</u>	<u>Other Compt Approved (28)</u>	<u>Athletic / Activity (29)</u>	<u>Capital Reserve (690, 1850) (31)</u>
6000 Revenue from Local Sources						
6111 Current Real Estate Taxes	62,325,366.82					
6112 Interim Real Estate Taxes	1,780,331.43					
6113 Public Utility Realty Taxes	66,722.27					
6151 Current Act 511 Earned Income Taxes	5,713,017.83					
6153 Current Act 511 Real Estate Transfer Taxes	1,832,831.89					
6411 Delinquent Real Estate Taxes	1,979,103.17					
6500 Earnings on Investments	27,588.11					
6700 Revenues from LEA Activities	49,006.00					
6831 Federal Revenue Received from Other Pennsylvania Public LEAs	171,624.76					
6832 Federal IDEA Revenue Received as Pass Through	563,088.84					
6910 Rentals	67,107.50					
6920 Contributions and Donations from Private Sources	108,183.21					
6944 Receipts from Other LEAs in Pennsylvania - Education	510.20					
6961 Transportation Services Provided Other Pennsylvania LEAs	38,219.51					
6991 Refunds of a Prior Year Expenditure	358.00					
6999 Other Revenues Not Specified Above	21,109.77					
6000 Total Revenue from Local Sources	\$74,744,169.31					
7000 Revenue from State Sources						
7111 Basic Education Funding-Formula	6,362,412.80					
7112 Basic Education Funding-Social Security	1,202,125.88					
7250 Migratory Children	3,079.00					
7271 Special Education funds for School-Aged Pupils	1,836,693.98					
7311 Pupil Transportation Subsidy	933,073.00					
7312 Nonpublic and Charter School Pupil Transportation Subsidy	77,385.00					
7320 Rental and Sinking Fund Payments / Building Reimbursement Subsidy	526,802.68					
7330 Health Services (Medical, Dental, Nurse, Act 25)	80,382.76					
7340 State Property Tax Reduction Allocation	1,476,813.28					
7505 Ready to Learn Block Grant	400,617.00					
7820 State Share of Retirement Contributions	5,612,146.43					
7000 Total Revenue from State Sources	\$18,511,531.81					
8000 Revenue from Federal Sources						
8512 IDEA, Part B	18,658.00					
8514 NCLB, Title I - Improving the Academic Achievement of the Disadvantaged	703,092.84					
8515 NCLB, Title II - Preparing, Training and Recruiting High Quality Teachers and Principals	96,183.60					

LEA : 124154003 Kennett Consolidated SD

Printed 1/20/2023 2:18:42 PM

	<u>Capital Reserve</u> <u>(1431) (32)</u>	<u>Other Capital</u> <u>Projects Fund (39)</u>	<u>Debt Service (40)</u>	<u>Permanent (90)</u>	<u>Total</u>
6000 Revenue from Local Sources					
6111 Current Real Estate Taxes					62,325,366.82
6112 Interim Real Estate Taxes					1,780,331.43
6113 Public Utility Realty Taxes					66,722.27
6151 Current Act 511 Earned Income Taxes					5,713,017.83
6153 Current Act 511 Real Estate Transfer Taxes					1,832,831.89
6411 Delinquent Real Estate Taxes					1,979,103.17
6500 Earnings on Investments	26,990.68				54,578.79
6700 Revenues from LEA Activities					49,006.00
6831 Federal Revenue Received from Other Pennsylvania Public LEAs					171,624.76
6832 Federal IDEA Revenue Received as Pass Through					563,088.84
6910 Rentals					67,107.50
6920 Contributions and Donations from Private Sources					108,183.21
6944 Receipts from Other LEAs in Pennsylvania - Education					510.20
6961 Transportation Services Provided Other Pennsylvania LEAs					38,219.51
6991 Refunds of a Prior Year Expenditure					358.00
6999 Other Revenues Not Specified Above					21,109.77
6000 Total Revenue from Local Sources	\$26,990.68				\$74,771,159.99
7000 Revenue from State Sources					
7111 Basic Education Funding-Formula					6,362,412.80
7112 Basic Education Funding-Social Security					1,202,125.88
7250 Migratory Children					3,079.00
7271 Special Education funds for School-Aged Pupils					1,836,693.98
7311 Pupil Transportation Subsidy					933,073.00
7312 Nonpublic and Charter School Pupil Transportation Subsidy					77,385.00
7320 Rental and Sinking Fund Payments / Building Reimbursement Subsidy					526,802.68
7330 Health Services (Medical, Dental, Nurse, Act 25)					80,382.76
7340 State Property Tax Reduction Allocation					1,476,813.28
7505 Ready to Learn Block Grant					400,617.00
7820 State Share of Retirement Contributions					5,612,146.43
7000 Total Revenue from State Sources					\$18,511,531.81
8000 Revenue from Federal Sources					
8512 IDEA, Part B					18,658.00
8514 NCLB, Title I - Improving the Academic Achievement of the Disadvantaged					703,092.84
8515 NCLB, Title II - Preparing, Training and Recruiting High Quality Teachers and Principals					96,183.60

LEA : 124154003 Kennett Consolidated SD

Printed 1/20/2023 2:18:42 PM

	<u>General Fund (10)</u>	<u>Student Sponsored Activity Fund (21)</u>	<u>Public Purpose Trust (27)</u>	<u>Other Compt Approved (28)</u>	<u>Athletic / Activity (29)</u>	<u>Capital Reserve (690, 1850) (31)</u>
8000 Revenue from Federal Sources						
8516 NCLB, Title III - Language Instruction for Limited English Proficient and Immigrant Students	109,585.46					
8517 NCLB, Title IV - 21st Century Schools	54,851.96					
8741 Elementary and Secondary School Emergency Relief Fund (ESSER)	9,027.60					
8743 ESSER II - Elementary and Secondary School Emergency Relief Fund	1,554,521.02					
8744 ARP ESSER - Elementary and Secondary School Emergency Relief Fund	662,418.91					
8751 ARP ESSER Learning Loss	4,186.00					
8820 Medical Assistance Reimbursement for Administrative Claiming (Quarterly) Program	21,643.42					
8000 Total Revenue from Federal Sources	\$3,234,168.81					
9000 Other Financing Sources						
9310 General Fund Transfers						
9000 Total Other Financing Sources						
Total From All Sources	\$96,489,869.93					

LEA : 124154003 Kennett Consolidated SD

Printed 1/20/2023 2:18:42 PM

	<u>Capital Reserve</u> <u>(1431) (32)</u>	<u>Other Capital</u> <u>Projects Fund (39)</u>	<u>Debt Service (40)</u>	<u>Permanent (90)</u>	<u>Total</u>
8000 Revenue from Federal Sources					
8516 NCLB, Title III - Language Instruction for Limited English Proficient and Immigrant Students					109,585.46
8517 NCLB, Title IV - 21st Century Schools					54,851.96
8741 Elementary and Secondary School Emergency Relief Fund (ESSER)					9,027.60
8743 ESSER II - Elementary and Secondary School Emergency Relief Fund					1,554,521.02
8744 ARP ESSER - Elementary and Secondary School Emergency Relief Fund					662,418.91
8751 ARP ESSER Learning Loss					4,186.00
8820 Medical Assistance Reimbursement for Administrative Claiming (Quarterly) Program					21,643.42
8000 Total Revenue from Federal Sources					\$3,234,168.81
9000 Other Financing Sources					
9310 General Fund Transfers	7,707,841.24				7,707,841.24
9000 Total Other Financing Sources	\$7,707,841.24				\$7,707,841.24
Total From All Sources	\$7,734,831.92				\$104,224,701.85

LEA : 124154003 Kennett Consolidated SD

Printed 1/20/2023 2:18:45 PM

	<u>General Fund (10)</u>	<u>Student Sponsored Activity Fund (21)</u>	<u>Public Purpose Trust (27)</u>	<u>Other Compt Approved (28)</u>	<u>Athletic / Activity (29)</u>	<u>Capital Reserve (690. 1850) (31)</u>
Revenue from Local Sources	74,744,169.31					
Revenue from State Sources	18,511,531.81					
Revenue from Federal Sources	3,234,168.81					
Other Financing Sources						
Total From All Sources	\$96,489,869.93					

LEA : 124154003 Kennett Consolidated SD

Printed 1/20/2023 2:18:45 PM

	<u>Capital Reserve (1431)</u> <u>(32)</u>	<u>Other Capital Projects</u> <u>Fund (39)</u>	<u>Debt Service (40)</u>	<u>Permanent (90)</u>	<u>Total</u>
Revenue from Local Sources	26,990.68				74,771,159.99
Revenue from State Sources					18,511,531.81
Revenue from Federal Sources					3,234,168.81
Other Financing Sources	7,707,841.24				7,707,841.24
Total From All Sources	\$7,734,831.92				\$104,224,701.85

LEA : 124154003 Kennett Consolidated SD

Printed 1/20/2023 2:18:47 PM

General Fund (10)

1000 Instruction	Total
100 <u>Personnel Services – Salaries</u>	
100 Personnel Services – Salaries	21,949,498.50
Total Personnel Services – Salaries	\$21,949,498.50
200 <u>Personnel Services – Employee Benefits</u>	
210 Group Insurance – Contracted Provider	90,561.26
220 Social Security Contributions	1,637,581.74
230 PSERS Retirement Contributions	7,609,220.57
250 Unemployment Compensation	8,222.62
260 Workers' Compensation	80,284.08
270 Group Insurance – Self-Insurance	4,688,790.80
280 Other Post-Employment Benefits (OPEB)	436,739.33
Total Personnel Services – Employee Benefits	\$14,551,400.40
300 <u>Purchased Professional and Technical Services</u>	
322 Professional Educational Services – Ius	3,808,701.29
323 Professional Educational Services – Other Educational Agencies	2,597.68
329 Professional Educational Services – Other	202,168.38
330 Other Professional Services	1,168,191.98
390 Other Purchased Professional and Technical Services	8,631.27
Total Purchased Professional and Technical Services	\$5,190,290.60
400 <u>Purchased Property Services</u>	
430 Repairs and Maintenance Services	580.00
Total Purchased Property Services	\$580.00
500 <u>Other Purchased Services</u>	
510 Student Transportation Services	38,329.60
530 Communications	703.20
550 Printing and Binding	46,378.90
561 Tuition To Other School Districts Within the State	151,643.90
562 Tuition To Pennsylvania Charter Schools	3,018,277.56
563 Tuition To Nonpublic Schools	444,090.00
564 Tuition To Career and Technology Centers	1,961,970.18
566 Tuition To Institutions of Higher Education and Technical Institutes	4,050.00
567 Tuition To Approved Private Schools (APS) and PA Chartered Schools for the Deaf and Blind	85,381.88
580 Travel	8,653.76
591 Services Purchased Locally	1,582,662.64
599 Other Miscellaneous Purchased Services	350,376.36
Total Other Purchased Services	\$7,692,517.98
600 <u>Supplies</u>	
610 General Supplies	438,444.96
630 Food	3,005.13
640 Books and Periodicals	153,796.97
650 Supplies & Fees – Technology Related	14,615.00
Total Supplies	\$609,862.06

General Fund (10)		
1000 Instruction		<u>Total</u>
700 <u>Property</u>		
752 Capital Equipment – Original and Additional	19,129.14	
762 Capitalized Equipment - Replacement	962.87	
Total Property	\$20,092.01	
800 <u>Other Objects</u>		
810 Dues and Fees	2,199.25	
890 Miscellaneous Expenditures	7,002.93	
Total Other Objects	\$9,202.18	
Total 1000 Instruction	\$50,023,443.73	

LEA : 124154003 Kennett Consolidated SD

Printed 1/20/2023 2:18:47 PM

General Fund (10)				
1100 Regular Programs – Elementary / Secondary	<u>Elementary</u>	<u>Secondary</u>	<u>Federal</u>	<u>Total</u>
100 <u>Personnel Services – Salaries</u>				
100 Personnel Services – Salaries	10,228,292.75	8,232,369.57	660,458.22	19,121,120.54
Total Personnel Services – Salaries	\$10,228,292.75	\$8,232,369.57	\$660,458.22	\$19,121,120.54
200 <u>Personnel Services – Employee Benefits</u>				
210 Group Insurance – Contracted Provider	44,126.38	33,886.03	2,236.47	80,248.88
220 Social Security Contributions	763,188.86	614,110.49	48,931.02	1,426,230.37
230 PSERS Retirement Contributions	3,546,724.88	2,867,593.49	226,126.56	6,640,444.93
250 Unemployment Compensation		7,109.55		7,109.55
260 Workers' Compensation	32,149.82	32,277.86	2,987.98	67,415.66
270 Group Insurance – Self-Insurance	2,230,390.73	1,824,071.85	92,973.20	4,147,435.78
280 Other Post-Employment Benefits (OPEB)	436,739.33			436,739.33
Total Personnel Services – Employee Benefits	\$7,053,320.00	\$5,379,049.27	\$373,255.23	\$12,805,624.50
300 <u>Purchased Professional and Technical Services</u>				
322 Professional Educational Services – lus		96,578.77		96,578.77
329 Professional Educational Services – Other			9,450.56	9,450.56
330 Other Professional Services			25,820.50	25,820.50
Total Purchased Professional and Technical Services		\$96,578.77	\$35,271.06	\$131,849.83
400 <u>Purchased Property Services</u>				
430 Repairs and Maintenance Services	300.00	280.00		580.00
Total Purchased Property Services	\$300.00	\$280.00		\$580.00
500 <u>Other Purchased Services</u>				
510 Student Transportation Services	2,830.44	17,434.23		20,264.67
550 Printing and Binding	21,422.07	24,956.83		46,378.90
561 Tuition To Other School Districts Within the State			106,161.74	106,161.74
562 Tuition To Pennsylvania Charter Schools	1,167,770.21	803,998.21		1,971,768.42
566 Tuition To Institutions of Higher Education and Technical Institutes		4,050.00		4,050.00
580 Travel	1,836.38	1,119.34		2,955.72
591 Services Purchased Locally	521,932.66	207,285.92		729,218.58
599 Other Miscellaneous Purchased Services	239,707.47	110,668.89		350,376.36
Total Other Purchased Services	\$1,955,499.23	\$1,169,513.42	\$106,161.74	\$3,231,174.39
600 <u>Supplies</u>				
610 General Supplies	173,147.18	175,017.21	6,948.42	355,112.81
630 Food	31.94	2,973.19		3,005.13
640 Books and Periodicals	36,321.96	76,632.62	16,094.55	129,049.13
Total Supplies	\$209,501.08	\$254,623.02	\$23,042.97	\$487,167.07
700 <u>Property</u>				
752 Capital Equipment – Original and Additional	3,675.08	15,454.06		19,129.14
762 Capitalized Equipment - Replacement	962.87			962.87
Total Property	\$4,637.95	\$15,454.06		\$20,092.01
800 <u>Other Objects</u>				
810 Dues and Fees		1,879.00		1,879.00

LEA : 124154003 Kennett Consolidated SD

Printed 1/20/2023 2:18:47 PM

General Fund (10)

1100 Regular Programs – Elementary / Secondary	<u>Elementary</u>	<u>Secondary</u>	<u>Federal</u>	<u>Total</u>
Total Other Objects		\$1,879.00		\$1,879.00
Total 1100 Regular Programs – Elementary / Secondary	\$19,451,551.01	\$15,149,747.11	\$1,198,189.22	\$35,799,487.34

LEA : 124154003 Kennett Consolidated SD

Printed 1/20/2023 2:18:47 PM

General Fund (10)

1110 Regular Programs

	Elementary	Secondary	Federal	Total
100 <u>Personnel Services – Salaries</u>				
100 Personnel Services – Salaries	10,228,292.75	8,232,369.57	137,549.35	18,598,211.67
Total Personnel Services – Salaries	\$10,228,292.75	\$8,232,369.57	\$137,549.35	\$18,598,211.67
200 <u>Personnel Services – Employee Benefits</u>				
210 Group Insurance – Contracted Provider	44,126.38	33,886.03	394.76	78,407.17
220 Social Security Contributions	763,188.86	614,110.49	9,828.18	1,387,127.53
230 PSERS Retirement Contributions	3,546,724.88	2,867,593.49	48,059.79	6,462,378.16
250 Unemployment Compensation		7,109.55		7,109.55
260 Workers' Compensation	32,149.82	32,277.86	625.78	65,053.46
270 Group Insurance – Self-Insurance	2,230,390.73	1,824,071.85	15,129.04	4,069,591.62
280 Other Post-Employment Benefits (OPEB)	436,739.33			436,739.33
Total Personnel Services – Employee Benefits	\$7,053,320.00	\$5,379,049.27	\$74,037.55	\$12,506,406.82
300 <u>Purchased Professional and Technical Services</u>				
322 Professional Educational Services – lus		96,578.77		96,578.77
329 Professional Educational Services – Other			9,450.56	9,450.56
Total Purchased Professional and Technical Services		\$96,578.77	\$9,450.56	\$106,029.33
400 <u>Purchased Property Services</u>				
430 Repairs and Maintenance Services	300.00	280.00		580.00
Total Purchased Property Services	\$300.00	\$280.00		\$580.00
500 <u>Other Purchased Services</u>				
510 Student Transportation Services	2,830.44	17,434.23		20,264.67
550 Printing and Binding	21,422.07	24,956.83		46,378.90
561 Tuition To Other School Districts Within the State			106,161.74	106,161.74
562 Tuition To Pennsylvania Charter Schools	1,167,770.21	803,998.21		1,971,768.42
566 Tuition To Institutions of Higher Education and Technical Institutes		4,050.00		4,050.00
580 Travel	1,836.38	1,119.34		2,955.72
591 Services Purchased Locally	521,932.66	207,285.92		729,218.58
599 Other Miscellaneous Purchased Services	239,707.47	110,668.89		350,376.36
Total Other Purchased Services	\$1,955,499.23	\$1,169,513.42	\$106,161.74	\$3,231,174.39
600 <u>Supplies</u>				
610 General Supplies	173,147.18	175,017.21	2,071.37	350,235.76
630 Food	31.94	2,973.19		3,005.13
640 Books and Periodicals	36,321.96	76,632.62	16,094.55	129,049.13
Total Supplies	\$209,501.08	\$254,623.02	\$18,165.92	\$482,290.02
700 <u>Property</u>				
752 Capital Equipment – Original and Additional	3,675.08	15,454.06		19,129.14
762 Capitalized Equipment - Replacement	962.87			962.87
Total Property	\$4,637.95	\$15,454.06		\$20,092.01
800 <u>Other Objects</u>				
810 Dues and Fees		1,879.00		1,879.00
Total Other Objects		\$1,879.00		\$1,879.00
Total 1110 Regular Programs	\$19,451,551.01	\$15,149,747.11	\$345,365.12	\$34,946,663.24

LEA : 124154003 Kennett Consolidated SD

Printed 1/20/2023 2:18:47 PM

General Fund (10)

1190 Federally-Funded Regular Programs

	<u>Elementary</u>	<u>Secondary</u>	<u>Federal</u>	<u>Total</u>
100 <u>Personnel Services – Salaries</u>				
100 Personnel Services – Salaries			522,908.87	522,908.87
Total Personnel Services – Salaries			\$522,908.87	\$522,908.87
200 <u>Personnel Services – Employee Benefits</u>				
210 Group Insurance – Contracted Provider			1,841.71	1,841.71
220 Social Security Contributions			39,102.84	39,102.84
230 PSERS Retirement Contributions			178,066.77	178,066.77
260 Workers' Compensation			2,362.20	2,362.20
270 Group Insurance – Self-Insurance			77,844.16	77,844.16
Total Personnel Services – Employee Benefits			\$299,217.68	\$299,217.68
300 <u>Purchased Professional and Technical Services</u>				
330 Other Professional Services			25,820.50	25,820.50
Total Purchased Professional and Technical Services			\$25,820.50	\$25,820.50
600 <u>Supplies</u>				
610 General Supplies			4,877.05	4,877.05
Total Supplies			\$4,877.05	\$4,877.05
Total 1190 Federally-Funded Regular Programs			\$852,824.10	\$852,824.10

LEA : 124154003 Kennett Consolidated SD

Printed 1/20/2023 2:18:47 PM

General Fund (10)				
1200 Special Programs – Elementary / Secondary	<u>Elementary</u>	<u>Secondary</u>	<u>Federal</u>	<u>Total</u>
100 <u>Personnel Services – Salaries</u>				
100 Personnel Services – Salaries	1,278,457.89	1,402,614.41	8,755.51	2,689,827.81
Total Personnel Services – Salaries	\$1,278,457.89	\$1,402,614.41	\$8,755.51	\$2,689,827.81
200 <u>Personnel Services – Employee Benefits</u>				
210 Group Insurance – Contracted Provider	4,589.09	5,723.29		10,312.38
220 Social Security Contributions	95,583.53	104,524.48	669.80	200,777.81
230 PSERS Retirement Contributions	452,302.50	468,654.53	3,060.05	924,017.08
250 Unemployment Compensation	346.83	766.24		1,113.07
260 Workers' Compensation	5,816.67	6,381.63	39.84	12,238.14
270 Group Insurance – Self-Insurance	232,555.79	308,799.23		541,355.02
Total Personnel Services – Employee Benefits	\$791,194.41	\$894,849.40	\$3,769.69	\$1,689,813.50
300 <u>Purchased Professional and Technical Services</u>				
322 Professional Educational Services – Ius	1,359,849.22	1,881,844.63	470,428.67	3,712,122.52
323 Professional Educational Services – Other Educational Agencies	2,597.68			2,597.68
329 Professional Educational Services – Other	1,826.91	4,036.09		5,863.00
330 Other Professional Services	602,744.90	526,144.58	9,125.00	1,138,014.48
Total Purchased Professional and Technical Services	\$1,967,018.71	\$2,412,025.30	\$479,553.67	\$4,858,597.68
500 <u>Other Purchased Services</u>				
510 Student Transportation Services	723.43	1,515.56		2,238.99
530 Communications	307.44	395.76		703.20
561 Tuition To Other School Districts Within the State		10,647.58		10,647.58
562 Tuition To Pennsylvania Charter Schools	379,216.54	667,292.60		1,046,509.14
563 Tuition To Nonpublic Schools	191,548.00	252,542.00		444,090.00
567 Tuition To Approved Private Schools (APS) and PA Chartered Schools for the Deaf and Blind	30,376.18	55,005.70		85,381.88
580 Travel	1,265.01	1,499.35	178.68	2,943.04
591 Services Purchased Locally	632,383.95	221,060.11		853,444.06
Total Other Purchased Services	\$1,235,820.55	\$1,209,958.66	\$178.68	\$2,445,957.89
600 <u>Supplies</u>				
610 General Supplies	24,789.60	21,721.45	6,756.00	53,267.05
640 Books and Periodicals	6,967.40	6,067.36	5,000.00	18,034.76
650 Supplies & Fees – Technology Related	7,361.58	7,253.42		14,615.00
Total Supplies	\$39,118.58	\$35,042.23	\$11,756.00	\$85,916.81
800 <u>Other Objects</u>				
810 Dues and Fees	320.25			320.25
Total Other Objects	\$320.25			\$320.25
Total 1200 Special Programs – Elementary / Secondary	\$5,311,930.39	\$5,954,490.00	\$504,013.55	\$11,770,433.94

LEA : 124154003 Kennett Consolidated SD

Printed 1/20/2023 2:18:47 PM

General Fund (10)				
1210 Life Skills Support	<u>Elementary</u>	<u>Secondary</u>	<u>Federal</u>	<u>Total</u>
100 <u>Personnel Services – Salaries</u>				
100 Personnel Services – Salaries	55,205.00	131,091.48	8,755.51	195,051.99
Total Personnel Services – Salaries	\$55,205.00	\$131,091.48	\$8,755.51	\$195,051.99
200 <u>Personnel Services – Employee Benefits</u>				
210 Group Insurance – Contracted Provider	126.12	503.69		629.81
220 Social Security Contributions	4,188.48	9,822.05	669.80	14,680.33
230 PSERS Retirement Contributions	18,819.38	45,477.38	3,060.05	67,356.81
260 Workers' Compensation	251.13	596.48	39.84	887.45
270 Group Insurance – Self-Insurance		27,605.60		27,605.60
Total Personnel Services – Employee Benefits	\$23,385.11	\$84,005.20	\$3,769.69	\$111,160.00
300 <u>Purchased Professional and Technical Services</u>				
322 Professional Educational Services – lus	249,869.44	279,420.10	62,098.21	591,387.75
329 Professional Educational Services – Other	1,733.43	3,829.57		5,563.00
330 Other Professional Services	133,645.56	160,313.21		293,958.77
Total Purchased Professional and Technical Services	\$385,248.43	\$443,562.88	\$62,098.21	\$890,909.52
500 <u>Other Purchased Services</u>				
510 Student Transportation Services	165.02	962.72		1,127.74
530 Communications	307.44	395.76		703.20
Total Other Purchased Services	\$472.46	\$1,358.48		\$1,830.94
600 <u>Supplies</u>				
610 General Supplies	11,596.51	6,940.79		18,537.30
Total Supplies	\$11,596.51	\$6,940.79		\$18,537.30
800 <u>Other Objects</u>				
810 Dues and Fees	320.25			320.25
Total Other Objects	\$320.25			\$320.25
Total 1210 Life Skills Support	\$476,227.76	\$666,958.83	\$74,623.41	\$1,217,810.00

LEA : 124154003 Kennett Consolidated SD

Printed 1/20/2023 2:18:47 PM

General Fund (10)				
1220 Sensory Support	<u>Elementary</u>	<u>Secondary</u>	<u>Federal</u>	<u>Total</u>
100 <u>Personnel Services – Salaries</u>				
100 Personnel Services – Salaries	48,683.19	74,150.81		122,834.00
Total Personnel Services – Salaries	\$48,683.19	\$74,150.81		\$122,834.00
200 <u>Personnel Services – Employee Benefits</u>				
210 Group Insurance – Contracted Provider	106.90	156.38		263.28
220 Social Security Contributions	3,724.24	5,672.49		9,396.73
230 PSERS Retirement Contributions	16,643.22	24,607.13		41,250.35
260 Workers' Compensation	221.52	337.36		558.88
Total Personnel Services – Employee Benefits	\$20,695.88	\$30,773.36		\$51,469.24
300 <u>Purchased Professional and Technical Services</u>				
322 Professional Educational Services – Ius	80,648.08	89,780.47		170,428.55
330 Other Professional Services	323,237.72		2,223.00	325,460.72
Total Purchased Professional and Technical Services	\$403,885.80	\$89,780.47	\$2,223.00	\$495,889.27
500 <u>Other Purchased Services</u>				
580 Travel	79.58	78.42		158.00
Total Other Purchased Services	\$79.58	\$78.42		\$158.00
600 <u>Supplies</u>				
610 General Supplies	1,070.45	1,386.97		2,457.42
Total Supplies	\$1,070.45	\$1,386.97		\$2,457.42
Total 1220 Sensory Support	\$474,414.90	\$196,170.03	\$2,223.00	\$672,807.93

LEA : 124154003 Kennett Consolidated SD

Printed 1/20/2023 2:18:47 PM

General Fund (10)				
1230 Emotional Support	<u>Elementary</u>	<u>Secondary</u>	<u>Federal</u>	<u>Total</u>
100 <u>Personnel Services – Salaries</u>				
100 Personnel Services – Salaries	277,265.16	73,182.10		350,447.26
Total Personnel Services – Salaries	\$277,265.16	\$73,182.10		\$350,447.26
200 <u>Personnel Services – Employee Benefits</u>				
210 Group Insurance – Contracted Provider	1,023.00	492.58		1,515.58
220 Social Security Contributions	20,716.21	5,385.44		26,101.65
230 PSERS Retirement Contributions	95,342.24	25,569.77		120,912.01
260 Workers' Compensation	1,261.40	332.94		1,594.34
270 Group Insurance – Self-Insurance	56,847.45	27,890.99		84,738.44
Total Personnel Services – Employee Benefits	\$175,190.30	\$59,671.72		\$234,862.02
300 <u>Purchased Professional and Technical Services</u>				
322 Professional Educational Services – lus	537,643.26	1,260,449.70		1,798,092.96
330 Other Professional Services	11,771.08	111,279.57		123,050.65
Total Purchased Professional and Technical Services	\$549,414.34	\$1,371,729.27		\$1,921,143.61
500 <u>Other Purchased Services</u>				
510 Student Transportation Services	558.41	552.84		1,111.25
561 Tuition To Other School Districts Within the State		10,647.58		10,647.58
563 Tuition To Nonpublic Schools	191,548.00	252,542.00		444,090.00
567 Tuition To Approved Private Schools (APS) and PA Chartered Schools for the Deaf and Blind	25,602.75	7,572.00		33,174.75
580 Travel	127.35	111.41		238.76
Total Other Purchased Services	\$217,836.51	\$271,425.83		\$489,262.34
600 <u>Supplies</u>				
610 General Supplies	1,915.12	917.11		2,832.23
640 Books and Periodicals		1,593.83		1,593.83
Total Supplies	\$1,915.12	\$2,510.94		\$4,426.06
Total 1230 Emotional Support	\$1,221,621.43	\$1,778,519.86		\$3,000,141.29

LEA : 124154003 Kennett Consolidated SD

Printed 1/20/2023 2:18:47 PM

General Fund (10)				
1240 Academic Support	<u>Elementary</u>	<u>Secondary</u>	<u>Federal</u>	<u>Total</u>
100 <u>Personnel Services – Salaries</u>				
100 Personnel Services – Salaries	862,148.28	1,076,836.27		1,938,984.55
Total Personnel Services – Salaries	\$862,148.28	\$1,076,836.27		\$1,938,984.55
200 <u>Personnel Services – Employee Benefits</u>				
210 Group Insurance – Contracted Provider	3,168.76	4,355.39		7,524.15
220 Social Security Contributions	64,433.26	80,241.16		144,674.42
230 PSERS Retirement Contributions	309,214.02	356,454.93		665,668.95
250 Unemployment Compensation	346.83	766.24		1,113.07
260 Workers' Compensation	3,922.58	4,899.31		8,821.89
270 Group Insurance – Self-Insurance	165,885.98	240,431.44		406,317.42
Total Personnel Services – Employee Benefits	\$546,971.43	\$687,148.47		\$1,234,119.90
300 <u>Purchased Professional and Technical Services</u>				
322 Professional Educational Services – Ius	77,132.28	69,256.20	207,314.02	353,702.50
329 Professional Educational Services – Other	93.48	206.52		300.00
330 Other Professional Services	67,613.14	104,646.20		172,259.34
Total Purchased Professional and Technical Services	\$144,838.90	\$174,108.92	\$207,314.02	\$526,261.84
500 <u>Other Purchased Services</u>				
562 Tuition To Pennsylvania Charter Schools	379,216.54	667,292.60		1,046,509.14
580 Travel	1,058.08	1,309.52	178.68	2,546.28
591 Services Purchased Locally	632,383.95	221,060.11		853,444.06
Total Other Purchased Services	\$1,012,658.57	\$889,662.23	\$178.68	\$1,902,499.48
600 <u>Supplies</u>				
610 General Supplies	8,878.63	7,222.61		16,101.24
640 Books and Periodicals	6,967.40	4,473.53		11,440.93
Total Supplies	\$15,846.03	\$11,696.14		\$27,542.17
Total 1240 Academic Support	\$2,582,463.21	\$2,839,452.03	\$207,492.70	\$5,629,407.94

LEA : 124154003 Kennett Consolidated SD

Printed 1/20/2023 2:18:47 PM

General Fund (10)

1241 Learning Support – Public	Elementary	Secondary	Federal	Total
100 Personnel Services – Salaries				
100 Personnel Services – Salaries	745,520.60	1,032,219.61		1,777,740.21
Total Personnel Services – Salaries	\$745,520.60	\$1,032,219.61		\$1,777,740.21
200 Personnel Services – Employee Benefits				
210 Group Insurance – Contracted Provider	2,852.95	4,239.24		7,092.19
220 Social Security Contributions	55,712.82	76,869.37		132,582.19
230 PSERS Retirement Contributions	257,597.81	340,865.77		598,463.58
250 Unemployment Compensation	346.83	766.24		1,113.07
260 Workers' Compensation	3,391.89	4,696.37		8,088.26
270 Group Insurance – Self-Insurance	148,452.50	235,276.12		383,728.62
Total Personnel Services – Employee Benefits	\$468,354.80	\$662,713.11		\$1,131,067.91
300 Purchased Professional and Technical Services				
322 Professional Educational Services – Ius	77,132.28	69,256.20	207,314.02	353,702.50
329 Professional Educational Services – Other	93.48	206.52		300.00
330 Other Professional Services	67,613.14	104,646.20		172,259.34
Total Purchased Professional and Technical Services	\$144,838.90	\$174,108.92	\$207,314.02	\$526,261.84
500 Other Purchased Services				
562 Tuition To Pennsylvania Charter Schools	379,216.54	667,292.60		1,046,509.14
580 Travel	1,058.08	1,309.52	178.68	2,546.28
591 Services Purchased Locally	632,383.95	221,060.11		853,444.06
Total Other Purchased Services	\$1,012,658.57	\$889,662.23	\$178.68	\$1,902,499.48
600 Supplies				
610 General Supplies	4,456.93	7,222.61		11,679.54
640 Books and Periodicals	6,967.40	4,473.53		11,440.93
Total Supplies	\$11,424.33	\$11,696.14		\$23,120.47
Total 1241 Learning Support – Public	\$2,382,797.20	\$2,770,400.01	\$207,492.70	\$5,360,689.91

LEA : 124154003 Kennett Consolidated SD

Printed 1/20/2023 2:18:47 PM

General Fund (10)

1243 Gifted Support

	<u>Elementary</u>	<u>Secondary</u>	<u>Federal</u>	<u>Total</u>
100 <u>Personnel Services – Salaries</u>				
100 Personnel Services – Salaries	116,627.68	44,616.66		161,244.34
Total Personnel Services – Salaries	\$116,627.68	\$44,616.66		\$161,244.34
200 <u>Personnel Services – Employee Benefits</u>				
210 Group Insurance – Contracted Provider	315.81	116.15		431.96
220 Social Security Contributions	8,720.44	3,371.79		12,092.23
230 PSERS Retirement Contributions	51,616.21	15,589.16		67,205.37
260 Workers' Compensation	530.69	202.94		733.63
270 Group Insurance – Self-Insurance	17,433.48	5,155.32		22,588.80
Total Personnel Services – Employee Benefits	\$78,616.63	\$24,435.36		\$103,051.99
600 <u>Supplies</u>				
610 General Supplies	4,421.70			4,421.70
Total Supplies	\$4,421.70			\$4,421.70
Total 1243 Gifted Support	\$199,666.01	\$69,052.02		\$268,718.03

LEA : 124154003 Kennett Consolidated SD

Printed 1/20/2023 2:18:47 PM

General Fund (10)

1260 Physical Support	Elementary	Secondary	Federal	Total
100 <u>Personnel Services – Salaries</u>				
100 Personnel Services – Salaries	34,756.26	45,543.75		80,300.01
Total Personnel Services – Salaries	\$34,756.26	\$45,543.75		\$80,300.01
200 <u>Personnel Services – Employee Benefits</u>				
210 Group Insurance – Contracted Provider	164.31	215.25		379.56
220 Social Security Contributions	2,491.79	3,264.88		5,756.67
230 PSERS Retirement Contributions	12,143.88	15,912.91		28,056.79
260 Workers' Compensation	158.22	207.31		365.53
270 Group Insurance – Self-Insurance	9,822.36	12,871.20		22,693.56
Total Personnel Services – Employee Benefits	\$24,780.56	\$32,471.55		\$57,252.11
300 <u>Purchased Professional and Technical Services</u>				
322 Professional Educational Services – lus	9,078.38	19,408.22		28,486.60
Total Purchased Professional and Technical Services	\$9,078.38	\$19,408.22		\$28,486.60
600 <u>Supplies</u>				
610 General Supplies	512.76	3,412.40		3,925.16
Total Supplies	\$512.76	\$3,412.40		\$3,925.16
Total 1260 Physical Support	\$69,127.96	\$100,835.92		\$169,963.88

LEA : 124154003 Kennett Consolidated SD

Printed 1/20/2023 2:18:47 PM

General Fund (10)

1270 Multi-Handicapped Support

	<u>Elementary</u>	<u>Secondary</u>	<u>Federal</u>	<u>Total</u>
100 <u>Personnel Services – Salaries</u>				
100 Personnel Services – Salaries	400.00	1,810.00		2,210.00
Total Personnel Services – Salaries	\$400.00	\$1,810.00		\$2,210.00
200 <u>Personnel Services – Employee Benefits</u>				
220 Social Security Contributions	29.55	138.46		168.01
230 PSERS Retirement Contributions	139.76	632.41		772.17
260 Workers’ Compensation	1.82	8.23		10.05
Total Personnel Services – Employee Benefits	\$171.13	\$779.10		\$950.23
300 <u>Purchased Professional and Technical Services</u>				
322 Professional Educational Services – Ius	148,448.52	93,946.08	201,016.44	443,411.04
330 Other Professional Services	63,049.80	142,333.20		205,383.00
Total Purchased Professional and Technical Services	\$211,498.32	\$236,279.28	\$201,016.44	\$648,794.04
600 <u>Supplies</u>				
610 General Supplies	655.80	1,841.57		2,497.37
Total Supplies	\$655.80	\$1,841.57		\$2,497.37
Total 1270 Multi-Handicapped Support	\$212,725.25	\$240,709.95	\$201,016.44	\$654,451.64

LEA : 124154003 Kennett Consolidated SD

Printed 1/20/2023 2:18:47 PM

General Fund (10)

1280 Early Intervention Support	<u>Elementary</u>	<u>Secondary</u>	<u>Federal</u>	<u>Total</u>
300 <u>Purchased Professional and Technical Services</u>				
322 Professional Educational Services – lus	41,745.95			41,745.95
Total Purchased Professional and Technical Services	\$41,745.95			\$41,745.95
Total 1280 Early Intervention Support	\$41,745.95			\$41,745.95

LEA : 124154003 Kennett Consolidated SD

Printed 1/20/2023 2:18:47 PM

General Fund (10)				
1290 Special Programs - Other Support	<u>Elementary</u>	<u>Secondary</u>	<u>Federal</u>	<u>Total</u>
300 <u>Purchased Professional and Technical Services</u>				
322 Professional Educational Services – Ius	215,283.31	69,583.86		284,867.17
323 Professional Educational Services – Other Educational Agencies	2,597.68			2,597.68
330 Other Professional Services	3,427.60	7,572.40	6,902.00	17,902.00
Total Purchased Professional and Technical Services	\$221,308.59	\$77,156.26	\$6,902.00	\$305,366.85
500 <u>Other Purchased Services</u>				
567 Tuition To Approved Private Schools (APS) and PA Chartered Schools for the Deaf and Blind	4,773.43	47,433.70		52,207.13
Total Other Purchased Services	\$4,773.43	\$47,433.70		\$52,207.13
600 <u>Supplies</u>				
610 General Supplies	160.33		6,756.00	6,916.33
640 Books and Periodicals			5,000.00	5,000.00
650 Supplies & Fees – Technology Related	7,361.58	7,253.42		14,615.00
Total Supplies	\$7,521.91	\$7,253.42	\$11,756.00	\$26,531.33
Total 1290 Special Programs - Other Support	\$233,603.93	\$131,843.38	\$18,658.00	\$384,105.31

LEA : 124154003 Kennett Consolidated SD

Printed 1/20/2023 2:18:47 PM

General Fund (10)

1300 Vocational Education

	<u>Elementary</u>	<u>Secondary</u>	<u>Federal</u>	<u>Total</u>
500 <u>Other Purchased Services</u>				
564 Tuition To Career and Technology Centers		1,961,970.18		1,961,970.18
Total Other Purchased Services		\$1,961,970.18		\$1,961,970.18
Total 1300 Vocational Education		\$1,961,970.18		\$1,961,970.18

LEA : 124154003 Kennett Consolidated SD

Printed 1/20/2023 2:18:47 PM

General Fund (10)				
1400 Other Instructional Programs – Elementary / Secondary	<u>Elementary</u>	<u>Secondary</u>	<u>Federal</u>	<u>Total</u>
100 <u>Personnel Services – Salaries</u>				
100 Personnel Services – Salaries	388.16	2,139.81	136,022.18	138,550.15
Total Personnel Services – Salaries	\$388.16	\$2,139.81	\$136,022.18	\$138,550.15
200 <u>Personnel Services – Employee Benefits</u>				
220 Social Security Contributions	29.10	161.50	10,382.96	10,573.56
230 PSERS Retirement Contributions	134.23	590.84	44,033.49	44,758.56
260 Workers’ Compensation	1.75	9.69	618.84	630.28
Total Personnel Services – Employee Benefits	\$165.08	\$762.03	\$55,035.29	\$55,962.40
300 <u>Purchased Professional and Technical Services</u>				
329 Professional Educational Services – Other	280.52	22,949.30	163,625.00	186,854.82
330 Other Professional Services		725.00		725.00
390 Other Purchased Professional and Technical Services		8,631.27		8,631.27
Total Purchased Professional and Technical Services	\$280.52	\$32,305.57	\$163,625.00	\$196,211.09
500 <u>Other Purchased Services</u>				
510 Student Transportation Services		15,825.94		15,825.94
561 Tuition To Other School Districts Within the State		34,834.58		34,834.58
580 Travel		2,755.00		2,755.00
Total Other Purchased Services		\$53,415.52		\$53,415.52
600 <u>Supplies</u>				
610 General Supplies		7,967.09	22,098.01	30,065.10
640 Books and Periodicals			6,713.08	6,713.08
Total Supplies		\$7,967.09	\$28,811.09	\$36,778.18
800 <u>Other Objects</u>				
890 Miscellaneous Expenditures		7,002.93		7,002.93
Total Other Objects		\$7,002.93		\$7,002.93
Total 1400 Other Instructional Programs – Elementary / Secondary	\$833.76	\$103,592.95	\$383,493.56	\$487,920.27

LEA : 124154003 Kennett Consolidated SD

Printed 1/20/2023 2:18:47 PM

General Fund (10)				
1420 Summer School	<u>Elementary</u>	<u>Secondary</u>	<u>Federal</u>	<u>Total</u>
100 <u>Personnel Services – Salaries</u>				
100 Personnel Services – Salaries	162.32	337.68	114,310.00	114,810.00
Total Personnel Services – Salaries	\$162.32	\$337.68	\$114,310.00	\$114,810.00
200 <u>Personnel Services – Employee Benefits</u>				
220 Social Security Contributions	12.31	25.83	8,743.16	8,781.30
230 PSERS Retirement Contributions	56.71	48.11	37,598.95	37,703.77
260 Workers’ Compensation	0.74	1.54	520.15	522.43
Total Personnel Services – Employee Benefits	\$69.76	\$75.48	\$46,862.26	\$47,007.50
300 <u>Purchased Professional and Technical Services</u>				
329 Professional Educational Services – Other			163,625.00	163,625.00
Total Purchased Professional and Technical Services			\$163,625.00	\$163,625.00
600 <u>Supplies</u>				
610 General Supplies			22,098.01	22,098.01
640 Books and Periodicals			4,213.08	4,213.08
Total Supplies			\$26,311.09	\$26,311.09
Total 1420 Summer School	\$232.08	\$413.16	\$351,108.35	\$351,753.59

LEA : 124154003 Kennett Consolidated SD

Printed 1/20/2023 2:18:47 PM

General Fund (10)

1430 Homebound Instruction	<u>Elementary</u>	<u>Secondary</u>	<u>Federal</u>	<u>Total</u>
100 <u>Personnel Services – Salaries</u>				
100 Personnel Services – Salaries		1,063.20		1,063.20
Total Personnel Services – Salaries		\$1,063.20		\$1,063.20
200 <u>Personnel Services – Employee Benefits</u>				
220 Social Security Contributions		80.21		80.21
230 PSERS Retirement Contributions		371.48		371.48
260 Workers’ Compensation		4.83		4.83
Total Personnel Services – Employee Benefits		\$456.52		\$456.52
300 <u>Purchased Professional and Technical Services</u>				
329 Professional Educational Services – Other	280.52	22,949.30		23,229.82
Total Purchased Professional and Technical Services	\$280.52	\$22,949.30		\$23,229.82
Total 1430 Homebound Instruction	\$280.52	\$24,469.02		\$24,749.54

LEA : 124154003 Kennett Consolidated SD

Printed 1/20/2023 2:18:47 PM

General Fund (10)

1440 Alternative Regular Education Programs	<u>Elementary</u>	<u>Secondary</u>	<u>Federal</u>	<u>Total</u>
500 <u>Other Purchased Services</u>				
561 Tuition To Other School Districts Within the State		34,834.58		34,834.58
Total Other Purchased Services		\$34,834.58		\$34,834.58
Total 1440 Alternative Regular Education Programs		\$34,834.58		\$34,834.58

LEA : 124154003 Kennett Consolidated SD

Printed 1/20/2023 2:18:47 PM

General Fund (10)

1441 Adjudicated / Court-Placed Programs

Elementary

Secondary

Federal

Total

500 Other Purchased Services

561 Tuition To Other School Districts Within the State

34,834.58

34,834.58

Total Other Purchased Services

\$34,834.58

\$34,834.58

Total 1441 Adjudicated / Court-Placed Programs

\$34,834.58

\$34,834.58

LEA : 124154003 Kennett Consolidated SD

Printed 1/20/2023 2:18:47 PM

General Fund (10)				
1450 Instructional Programs Outside the Established School Day	<u>Elementary</u>	<u>Secondary</u>	<u>Federal</u>	<u>Total</u>
100 <u>Personnel Services – Salaries</u>				
100 Personnel Services – Salaries	225.84	738.93	21,712.18	22,676.95
Total Personnel Services – Salaries	\$225.84	\$738.93	\$21,712.18	\$22,676.95
200 <u>Personnel Services – Employee Benefits</u>				
220 Social Security Contributions	16.79	55.46	1,639.80	1,712.05
230 PSERS Retirement Contributions	77.52	171.25	6,434.54	6,683.31
260 Workers’ Compensation	1.01	3.32	98.69	103.02
Total Personnel Services – Employee Benefits	\$95.32	\$230.03	\$8,173.03	\$8,498.38
300 <u>Purchased Professional and Technical Services</u>				
330 Other Professional Services		725.00		725.00
390 Other Purchased Professional and Technical Services		8,631.27		8,631.27
Total Purchased Professional and Technical Services		\$9,356.27		\$9,356.27
500 <u>Other Purchased Services</u>				
510 Student Transportation Services		15,825.94		15,825.94
580 Travel		2,755.00		2,755.00
Total Other Purchased Services		\$18,580.94		\$18,580.94
600 <u>Supplies</u>				
610 General Supplies		7,967.09		7,967.09
640 Books and Periodicals			2,500.00	2,500.00
Total Supplies		\$7,967.09	\$2,500.00	\$10,467.09
800 <u>Other Objects</u>				
890 Miscellaneous Expenditures		7,002.93		7,002.93
Total Other Objects		\$7,002.93		\$7,002.93
Total 1450 Instructional Programs Outside the Established School Day	\$321.16	\$43,876.19	\$32,385.21	\$76,582.56

LEA : 124154003 Kennett Consolidated SD

Printed 1/20/2023 2:18:47 PM

General Fund (10)

1500 Nonpublic School Programs

300 Purchased Professional and Technical Services

	<u>Elementary</u>	<u>Secondary</u>	<u>Federal</u>	<u>Total</u>
330 Other Professional Services			3,632.00	3,632.00
Total Purchased Professional and Technical Services			\$3,632.00	\$3,632.00
Total 1500 Nonpublic School Programs			\$3,632.00	\$3,632.00

LEA : 124154003 Kennett Consolidated SD

Printed 1/20/2023 2:18:51 PM

General Fund (10)

2000 Support Services

Total

100	<u>Personnel Services – Salaries</u>	
100	Personnel Services – Salaries	10,671,946.30
Total Personnel Services – Salaries		\$10,671,946.30
200	<u>Personnel Services – Employee Benefits</u>	
210	Group Insurance – Contracted Provider	71,791.19
220	Social Security Contributions	772,126.73
230	PSERS Retirement Contributions	3,587,640.79
240	Tuition Reimbursement	224,801.10
250	Unemployment Compensation	4,269.82
260	Workers' Compensation	48,290.24
270	Group Insurance – Self-Insurance	2,208,242.30
280	Other Post-Employment Benefits (OPEB)	60,560.01
Total Personnel Services – Employee Benefits		\$6,977,722.18
300	<u>Purchased Professional and Technical Services</u>	
322	Professional Educational Services – Ius	164,819.49
330	Other Professional Services	888,812.46
340	Technical Services	153,989.28
350	Security / Safety Services	174,844.51
360	Employee Training and Development Services	116,191.88
390	Other Purchased Professional and Technical Services	9,375.42
Total Purchased Professional and Technical Services		\$1,508,033.04
400	<u>Purchased Property Services</u>	
410	Cleaning Services	118,600.09
420	Utility Services	237,525.85
430	Repairs and Maintenance Services	806,534.09
440	Rentals	68,109.38
460	Extermination Services	9,314.16
Total Purchased Property Services		\$1,240,083.57
500	<u>Other Purchased Services</u>	
513	Contracted Carriers	4,515,422.90
516	Student Transportation Services From the IU	32,723.66
520	Insurance – General	91,269.00
521	Fire Insurance	147,551.35
522	Automotive Liability Insurance	61,425.10
523	General Property and Liability Insurance	106,587.00
530	Communications	239,802.05
549	Other Advertising/Public Relations	7,072.95
550	Printing and Binding	3,329.40
580	Travel	103,217.23
595	IU Payments By Withholding	33,525.53
599	Other Miscellaneous Purchased Services	11,629.15
Total Other Purchased Services		\$5,353,555.32
600	<u>Supplies</u>	
610	General Supplies	738,408.80

LEA : 124154003 Kennett Consolidated SD

Printed 1/20/2023 2:18:51 PM

General Fund (10)

2000 Support Services

Total

600 <u>Supplies</u>	
620 Energy	952,295.38
630 Food	1,443.02
640 Books and Periodicals	910,644.18
650 Supplies & Fees – Technology Related	199,401.00
Total Supplies	\$2,802,192.38
700 <u>Property</u>	
752 Capital Equipment – Original and Additional	346,358.30
756 Capitalized Technology Equipment – Original	8,456.63
758 Capitalized Technology Software - Original	142.03
762 Capitalized Equipment - Replacement	51,219.79
Total Property	\$406,176.75
800 <u>Other Objects</u>	
810 Dues and Fees	141,719.91
890 Miscellaneous Expenditures	51,806.14
Total Other Objects	\$193,526.05
Total 2000 Support Services	\$29,153,235.59

LEA : 124154003 Kennett Consolidated SD

Printed 1/20/2023 2:18:51 PM

General Fund (10)

2100 Support Services – Students	<u>Elementary</u>	<u>Secondary</u>	<u>Federal</u>	<u>Total</u>
100 <u>Personnel Services – Salaries</u>				
100 Personnel Services – Salaries	738,984.98	770,362.88	16,162.50	1,764,336.76
Total Personnel Services – Salaries	\$738,984.98	\$770,362.88	\$16,162.50	\$1,764,336.76
200 <u>Personnel Services – Employee Benefits</u>				
210 Group Insurance – Contracted Provider	3,064.89	4,195.75		8,348.74
220 Social Security Contributions	55,511.35	57,249.91	1,236.43	131,822.15
230 PSERS Retirement Contributions	252,080.85	262,648.01	5,648.80	603,036.76
250 Unemployment Compensation		685.20		685.20
260 Workers' Compensation	3,367.06	3,510.04	73.54	8,034.17
270 Group Insurance – Self-Insurance	129,999.42	190,154.87		374,822.69
Total Personnel Services – Employee Benefits	\$444,023.57	\$518,443.78	\$6,958.77	\$1,126,749.71
300 <u>Purchased Professional and Technical Services</u>				
322 Professional Educational Services – Ius	38,362.44	37,798.85		76,161.29
330 Other Professional Services	178,592.22	64,427.32	177,288.42	442,131.09
Total Purchased Professional and Technical Services	\$216,954.66	\$102,226.17	\$177,288.42	\$518,292.38
500 <u>Other Purchased Services</u>				
580 Travel	600.00			3,087.53
Total Other Purchased Services	\$600.00			\$3,087.53
600 <u>Supplies</u>				
610 General Supplies	3,299.18	4,096.61	275.67	9,685.50
650 Supplies & Fees – Technology Related			188,901.00	188,901.00
Total Supplies	\$3,299.18	\$4,096.61	\$189,176.67	\$198,586.50
800 <u>Other Objects</u>				
810 Dues and Fees				230.00
Total Other Objects				\$230.00
Total 2100 Support Services – Students	\$1,403,862.39	\$1,395,129.44	\$389,586.36	\$3,611,282.88

LEA : 124154003 Kennett Consolidated SD

Printed 1/20/2023 2:18:51 PM

General Fund (10)

2110 Supervision of Student Services	<u>Elementary</u>	<u>Secondary</u>	<u>Federal</u>	<u>Total</u>
100 <u>Personnel Services – Salaries</u>				
100 Personnel Services – Salaries	61,717.40	60,810.70		122,528.10
Total Personnel Services – Salaries	\$61,717.40	\$60,810.70		\$122,528.10
200 <u>Personnel Services – Employee Benefits</u>				
210 Group Insurance – Contracted Provider	689.91	679.77		1,369.68
220 Social Security Contributions	4,677.79	4,609.07		9,286.86
230 PSERS Retirement Contributions	20,765.45	20,460.38		41,225.83
260 Workers' Compensation	285.51	281.31		566.82
270 Group Insurance – Self-Insurance	11,430.74	11,262.82		22,693.56
Total Personnel Services – Employee Benefits	\$37,849.40	\$37,293.35		\$75,142.75
Total 2110 Supervision of Student Services	\$99,566.80	\$98,104.05		\$197,670.85

LEA : 124154003 Kennett Consolidated SD

Printed 1/20/2023 2:18:51 PM

General Fund (10)

2119 Supervision of Student Services – All Other Supervision	<u>Elementary</u>	<u>Secondary</u>	<u>Federal</u>	<u>Total</u>
100 <u>Personnel Services – Salaries</u>				
100 Personnel Services – Salaries	61,717.40	60,810.70		122,528.10
Total Personnel Services – Salaries	\$61,717.40	\$60,810.70		\$122,528.10
200 <u>Personnel Services – Employee Benefits</u>				
210 Group Insurance – Contracted Provider	689.91	679.77		1,369.68
220 Social Security Contributions	4,677.79	4,609.07		9,286.86
230 PSERS Retirement Contributions	20,765.45	20,460.38		41,225.83
260 Workers' Compensation	285.51	281.31		566.82
270 Group Insurance – Self-Insurance	11,430.74	11,262.82		22,693.56
Total Personnel Services – Employee Benefits	\$37,849.40	\$37,293.35		\$75,142.75
Total 2119 Supervision of Student Services – All Other Supervision	\$99,566.80	\$98,104.05		\$197,670.85

LEA : 124154003 Kennett Consolidated SD

Printed 1/20/2023 2:18:51 PM

General Fund (10)				
2120 Guidance Services	<u>Elementary</u>	<u>Secondary</u>	<u>Federal</u>	<u>Total</u>
100 <u>Personnel Services – Salaries</u>				
100 Personnel Services – Salaries	472,540.60	554,763.09		1,027,303.69
Total Personnel Services – Salaries	\$472,540.60	\$554,763.09		\$1,027,303.69
200 <u>Personnel Services – Employee Benefits</u>				
210 Group Insurance – Contracted Provider	1,600.73	2,681.24		4,281.97
220 Social Security Contributions	35,461.04	40,968.96		76,430.00
230 PSERS Retirement Contributions	160,437.30	188,104.49		348,541.79
250 Unemployment Compensation		685.20		685.20
260 Workers' Compensation	2,149.98	2,524.37		4,674.35
270 Group Insurance – Self-Insurance	79,743.81	147,766.44		227,510.25
Total Personnel Services – Employee Benefits	\$279,392.86	\$382,730.70		\$662,123.56
300 <u>Purchased Professional and Technical Services</u>				
330 Other Professional Services	54.40	103.45	75,510.00	75,667.85
Total Purchased Professional and Technical Services	\$54.40	\$103.45	\$75,510.00	\$75,667.85
600 <u>Supplies</u>				
610 General Supplies		2,304.95		2,304.95
650 Supplies & Fees – Technology Related			175,000.00	175,000.00
Total Supplies		\$2,304.95	\$175,000.00	\$177,304.95
Total 2120 Guidance Services	\$751,987.86	\$939,902.19	\$250,510.00	\$1,942,400.05

LEA : 124154003 Kennett Consolidated SD

Printed 1/20/2023 2:18:51 PM

General Fund (10)

2130 Attendance Services

Elementary Secondary Federal Total

100 <u>Personnel Services – Salaries</u>				
100 Personnel Services – Salaries				60,824.74
Total Personnel Services – Salaries				\$60,824.74
200 <u>Personnel Services – Employee Benefits</u>				
210 Group Insurance – Contracted Provider				295.20
220 Social Security Contributions				4,560.17
230 PSERS Retirement Contributions				21,252.08
260 Workers' Compensation				276.44
270 Group Insurance – Self-Insurance				13,146.12
Total Personnel Services – Employee Benefits				\$39,530.01
Total 2130 Attendance Services				\$100,354.75

LEA : 124154003 Kennett Consolidated SD

Printed 1/20/2023 2:18:51 PM

General Fund (10)

2140 Psychological Services	Elementary	Secondary	Federal	Total
100 <u>Personnel Services – Salaries</u>				
100 Personnel Services – Salaries	204,726.98	116,038.96	16,162.50	336,928.44
Total Personnel Services – Salaries	\$204,726.98	\$116,038.96	\$16,162.50	\$336,928.44
200 <u>Personnel Services – Employee Benefits</u>				
210 Group Insurance – Contracted Provider	774.25	384.14		1,158.39
220 Social Security Contributions	15,372.52	8,721.99	1,236.43	25,330.94
230 PSERS Retirement Contributions	70,878.10	40,543.90	5,648.80	117,070.80
260 Workers' Compensation	931.57	528.08	73.54	1,533.19
270 Group Insurance – Self-Insurance	38,824.87	20,907.25		59,732.12
Total Personnel Services – Employee Benefits	\$126,781.31	\$71,085.36	\$6,958.77	\$204,825.44
300 <u>Purchased Professional and Technical Services</u>				
322 Professional Educational Services – lus	38,362.44	37,798.85		76,161.29
330 Other Professional Services	178,537.82	64,323.87	101,778.42	344,640.11
Total Purchased Professional and Technical Services	\$216,900.26	\$102,122.72	\$101,778.42	\$420,801.40
500 <u>Other Purchased Services</u>				
580 Travel	600.00			600.00
Total Other Purchased Services	\$600.00			\$600.00
600 <u>Supplies</u>				
610 General Supplies	3,299.18	1,791.66		5,090.84
650 Supplies & Fees – Technology Related			13,901.00	13,901.00
Total Supplies	\$3,299.18	\$1,791.66	\$13,901.00	\$18,991.84
Total 2140 Psychological Services	\$552,307.73	\$291,038.70	\$138,800.69	\$982,147.12

LEA : 124154003 Kennett Consolidated SD

Printed 1/20/2023 2:18:51 PM

General Fund (10)

2160 Social Work Services	<u>Elementary</u>	<u>Secondary</u>	<u>Federal</u>	<u>Total</u>
100 <u>Personnel Services – Salaries</u>				
100 Personnel Services – Salaries				123,055.25
Total Personnel Services – Salaries				\$123,055.25
200 <u>Personnel Services – Employee Benefits</u>				
210 Group Insurance – Contracted Provider				505.56
220 Social Security Contributions				9,256.15
230 PSERS Retirement Contributions				42,995.56
260 Workers' Compensation				559.45
270 Group Insurance – Self-Insurance				22,206.00
Total Personnel Services – Employee Benefits				\$75,522.72
300 <u>Purchased Professional and Technical Services</u>				
330 Other Professional Services				2,287.50
Total Purchased Professional and Technical Services				\$2,287.50
600 <u>Supplies</u>				
610 General Supplies			275.67	373.67
Total Supplies			\$275.67	\$373.67
Total 2160 Social Work Services			\$275.67	\$201,239.14

LEA : 124154003 Kennett Consolidated SD

Printed 1/20/2023 2:18:51 PM

General Fund (10)				
2170 Student Accounting Services	<u>Elementary</u>	<u>Secondary</u>	<u>Federal</u>	<u>Total</u>
100 <u>Personnel Services – Salaries</u>				
100 Personnel Services – Salaries				54,946.41
Total Personnel Services – Salaries				\$54,946.41
200 <u>Personnel Services – Employee Benefits</u>				
210 Group Insurance – Contracted Provider				287.34
220 Social Security Contributions				4,008.14
230 PSERS Retirement Contributions				18,411.46
260 Workers' Compensation				247.64
270 Group Insurance – Self-Insurance				19,316.28
Total Personnel Services – Employee Benefits				\$42,270.86
300 <u>Purchased Professional and Technical Services</u>				
330 Other Professional Services				19,535.63
Total Purchased Professional and Technical Services				\$19,535.63
500 <u>Other Purchased Services</u>				
580 Travel				2,487.53
Total Other Purchased Services				\$2,487.53
600 <u>Supplies</u>				
610 General Supplies				1,916.04
Total Supplies				\$1,916.04
800 <u>Other Objects</u>				
810 Dues and Fees				230.00
Total Other Objects				\$230.00
Total 2170 Student Accounting Services				\$121,386.47

LEA : 124154003 Kennett Consolidated SD

Printed 1/20/2023 2:18:51 PM

General Fund (10)

2190 Other Student Services	<u>Elementary</u>	<u>Secondary</u>	<u>Federal</u>	<u>Total</u>
100 <u>Personnel Services – Salaries</u>				
100 Personnel Services – Salaries		38,750.13		38,750.13
Total Personnel Services – Salaries		\$38,750.13		\$38,750.13
200 <u>Personnel Services – Employee Benefits</u>				
210 Group Insurance – Contracted Provider		450.60		450.60
220 Social Security Contributions		2,949.89		2,949.89
230 PSERS Retirement Contributions		13,539.24		13,539.24
260 Workers' Compensation		176.28		176.28
270 Group Insurance – Self-Insurance		10,218.36		10,218.36
Total Personnel Services – Employee Benefits		\$27,334.37		\$27,334.37
Total 2190 Other Student Services		\$66,084.50		\$66,084.50

LEA : 124154003 Kennett Consolidated SD

Printed 1/20/2023 2:18:51 PM

General Fund (10)

2200 Support Services – Instructional Staff	Elementary	Secondary	Federal	Total
100 Personnel Services – Salaries				
100 Personnel Services – Salaries	726,592.43	523,194.84	155,229.92	1,405,017.19
Total Personnel Services – Salaries	\$726,592.43	\$523,194.84	\$155,229.92	\$1,405,017.19
200 Personnel Services – Employee Benefits				
210 Group Insurance – Contracted Provider	4,498.84	3,142.42	695.86	8,337.12
220 Social Security Contributions	54,030.12	38,753.50	11,631.60	104,415.22
230 PSERS Retirement Contributions	248,924.82	167,891.95	54,279.41	471,096.18
240 Tuition Reimbursement	97,345.10	92,453.00		189,798.10
250 Unemployment Compensation	107.55	410.62		518.17
260 Workers' Compensation	3,304.65	2,378.19	706.71	6,389.55
270 Group Insurance – Self-Insurance	104,407.80	74,393.67	39,724.36	218,525.83
Total Personnel Services – Employee Benefits	\$512,618.88	\$379,423.35	\$107,037.94	\$999,080.17
300 Purchased Professional and Technical Services				
330 Other Professional Services	6,185.00	9,521.09	50,696.29	66,402.38
360 Employee Training and Development Services			116,191.88	116,191.88
Total Purchased Professional and Technical Services	\$6,185.00	\$9,521.09	\$166,888.17	\$182,594.26
400 Purchased Property Services				
430 Repairs and Maintenance Services	391.00	3,255.61		3,646.61
Total Purchased Property Services	\$391.00	\$3,255.61		\$3,646.61
500 Other Purchased Services				
530 Communications	424.64	278.56		703.20
580 Travel	3,477.66	4,281.04	81,148.10	88,906.80
Total Other Purchased Services	\$3,902.30	\$4,559.60	\$81,148.10	\$89,610.00
600 Supplies				
610 General Supplies	5,862.27	7,094.49	2,128.74	15,085.50
640 Books and Periodicals	202,258.31	197,165.84	156,197.82	555,621.97
Total Supplies	\$208,120.58	\$204,260.33	\$158,326.56	\$570,707.47
700 Property				
752 Capital Equipment – Original and Additional	377.65	834.33		1,211.98
Total Property	\$377.65	\$834.33		\$1,211.98
800 Other Objects				
810 Dues and Fees	841.00	3,038.25		3,879.25
Total Other Objects	\$841.00	\$3,038.25		\$3,879.25
Total 2200 Support Services – Instructional Staff	\$1,459,028.84	\$1,128,087.40	\$668,630.69	\$3,255,746.93

General Fund (10)

2220 Technology Support Services	<u>Elementary</u>	<u>Secondary</u>	<u>Federal</u>	<u>Total</u>
400 <u>Purchased Property Services</u>				
430 Repairs and Maintenance Services	174.21	384.86		559.07
Total Purchased Property Services	\$174.21	\$384.86		\$559.07
600 <u>Supplies</u>				
610 General Supplies	874.82	1,932.69		2,807.51
Total Supplies	\$874.82	\$1,932.69		\$2,807.51
Total 2220 Technology Support Services	\$1,049.03	\$2,317.55		\$3,366.58

LEA : 124154003 Kennett Consolidated SD

Printed 1/20/2023 2:18:51 PM

General Fund (10)

2240 Computer-Assisted Instruction Support Services	<u>Elementary</u>	<u>Secondary</u>	<u>Federal</u>	<u>Total</u>
100 <u>Personnel Services – Salaries</u>				
100 Personnel Services – Salaries			152,709.92	152,709.92
Total Personnel Services – Salaries			\$152,709.92	\$152,709.92
200 <u>Personnel Services – Employee Benefits</u>				
210 Group Insurance – Contracted Provider	31.86	31.40	695.86	759.12
220 Social Security Contributions			11,315.43	11,315.43
230 PSERS Retirement Contributions			53,357.01	53,357.01
260 Workers' Compensation			694.66	694.66
270 Group Insurance – Self-Insurance	1,810.40	1,783.81	39,724.36	43,318.57
Total Personnel Services – Employee Benefits	\$1,842.26	\$1,815.21	\$105,787.32	\$109,444.79
Total 2240 Computer-Assisted Instruction Support Services	\$1,842.26	\$1,815.21	\$258,497.24	\$262,154.71

LEA : 124154003 Kennett Consolidated SD

Printed 1/20/2023 2:18:51 PM

General Fund (10)

2250 School Library Services

	<u>Elementary</u>	<u>Secondary</u>	<u>Federal</u>	<u>Total</u>
100 <u>Personnel Services – Salaries</u>				
100 Personnel Services – Salaries	380,852.27	192,734.95		573,587.22
Total Personnel Services – Salaries	\$380,852.27	\$192,734.95		\$573,587.22
200 <u>Personnel Services – Employee Benefits</u>				
210 Group Insurance – Contracted Provider	1,215.16	609.02		1,824.18
220 Social Security Contributions	28,254.33	13,937.14		42,191.47
230 PSERS Retirement Contributions	130,461.58	65,594.71		196,056.29
250 Unemployment Compensation		304.65		304.65
260 Workers' Compensation	1,732.59	876.97		2,609.56
270 Group Insurance – Self-Insurance	51,737.30	33,453.34		85,190.64
Total Personnel Services – Employee Benefits	\$213,400.96	\$114,775.83		\$328,176.79
400 <u>Purchased Property Services</u>				
430 Repairs and Maintenance Services	216.79	2,870.75		3,087.54
Total Purchased Property Services	\$216.79	\$2,870.75		\$3,087.54
600 <u>Supplies</u>				
610 General Supplies	3,363.84	2,243.71		5,607.55
640 Books and Periodicals	34,362.87	40,342.32		74,705.19
Total Supplies	\$37,726.71	\$42,586.03		\$80,312.74
700 <u>Property</u>				
752 Capital Equipment – Original and Additional	377.65	834.33		1,211.98
Total Property	\$377.65	\$834.33		\$1,211.98
Total 2250 School Library Services	\$632,574.38	\$353,801.89		\$986,376.27

LEA : 124154003 Kennett Consolidated SD

Printed 1/20/2023 2:18:51 PM

General Fund (10)

2260 Instruction and Curriculum Development Services	Elementary	Secondary	Federal	Total
100 <u>Personnel Services – Salaries</u>				
100 Personnel Services – Salaries	345,740.16	330,459.89		676,200.05
Total Personnel Services – Salaries	\$345,740.16	\$330,459.89		\$676,200.05
200 <u>Personnel Services – Employee Benefits</u>				
210 Group Insurance – Contracted Provider	3,251.82	2,502.00		5,753.82
220 Social Security Contributions	25,775.79	24,816.36		50,592.15
230 PSERS Retirement Contributions	118,463.24	102,297.24		220,760.48
250 Unemployment Compensation	107.55	105.97		213.52
260 Workers' Compensation	1,572.06	1,501.22		3,073.28
270 Group Insurance – Self-Insurance	50,860.10	39,156.52		90,016.62
Total Personnel Services – Employee Benefits	\$200,030.56	\$170,379.31		\$370,409.87
300 <u>Purchased Professional and Technical Services</u>				
330 Other Professional Services	1,750.00	1,651.09		3,401.09
Total Purchased Professional and Technical Services	\$1,750.00	\$1,651.09		\$3,401.09
500 <u>Other Purchased Services</u>				
530 Communications	424.64	278.56		703.20
580 Travel	185.89	1,371.18		1,557.07
Total Other Purchased Services	\$610.53	\$1,649.74		\$2,260.27
600 <u>Supplies</u>				
610 General Supplies	1,623.61	2,918.09		4,541.70
640 Books and Periodicals	167,895.44	156,823.52	156,197.82	480,916.78
Total Supplies	\$169,519.05	\$159,741.61	\$156,197.82	\$485,458.48
800 <u>Other Objects</u>				
810 Dues and Fees	277.00	1,792.25		2,069.25
Total Other Objects	\$277.00	\$1,792.25		\$2,069.25
Total 2260 Instruction and Curriculum Development Services	\$717,927.30	\$665,673.89	\$156,197.82	\$1,539,799.01

LEA : 124154003 Kennett Consolidated SD

Printed 1/20/2023 2:18:51 PM

General Fund (10)

2270 Instructional Staff Professional Development Services	<u>Elementary</u>	<u>Secondary</u>	<u>Federal</u>	<u>Total</u>
100 <u>Personnel Services – Salaries</u>				
100 Personnel Services – Salaries			2,520.00	2,520.00
Total Personnel Services – Salaries			\$2,520.00	\$2,520.00
200 <u>Personnel Services – Employee Benefits</u>				
220 Social Security Contributions			316.17	316.17
230 PSERS Retirement Contributions			922.40	922.40
240 Tuition Reimbursement	97,345.10	92,453.00		189,798.10
260 Workers' Compensation			12.05	12.05
Total Personnel Services – Employee Benefits	\$97,345.10	\$92,453.00	\$1,250.62	\$191,048.72
300 <u>Purchased Professional and Technical Services</u>				
330 Other Professional Services	4,435.00	7,870.00	50,696.29	63,001.29
360 Employee Training and Development Services			116,191.88	116,191.88
Total Purchased Professional and Technical Services	\$4,435.00	\$7,870.00	\$166,888.17	\$179,193.17
500 <u>Other Purchased Services</u>				
580 Travel	3,291.77	2,909.86	81,148.10	87,349.73
Total Other Purchased Services	\$3,291.77	\$2,909.86	\$81,148.10	\$87,349.73
Total 2270 Instructional Staff Professional Development Services	\$105,071.87	\$103,232.86	\$251,806.89	\$460,111.62

LEA : 124154003 Kennett Consolidated SD

Printed 1/20/2023 2:18:51 PM

General Fund (10)				
2280 Nonpublic Support Services	<u>Elementary</u>	<u>Secondary</u>	<u>Federal</u>	<u>Total</u>
600 <u>Supplies</u>				
610 General Supplies			2,128.74	2,128.74
Total Supplies			\$2,128.74	\$2,128.74
Total 2280 Nonpublic Support Services			\$2,128.74	\$2,128.74

LEA : 124154003 Kennett Consolidated SD

Printed 1/20/2023 2:18:51 PM

General Fund (10)

2290 Other Instructional Staff Services	<u>Elementary</u>	<u>Secondary</u>	<u>Federal</u>	<u>Total</u>
800 <u>Other Objects</u>				
810 Dues and Fees	564.00	1,246.00		1,810.00
Total Other Objects	\$564.00	\$1,246.00		\$1,810.00
Total 2290 Other Instructional Staff Services	\$564.00	\$1,246.00		\$1,810.00

LEA : 124154003 Kennett Consolidated SD

Printed 1/20/2023 2:18:51 PM

General Fund (10)

2300 Support Services – Administration	Elementary	Secondary	Federal	Total
100 Personnel Services – Salaries				
100 Personnel Services – Salaries	1,106,444.46	1,066,221.98		2,760,295.01
Total Personnel Services – Salaries	\$1,106,444.46	\$1,066,221.98		\$2,760,295.01
200 Personnel Services – Employee Benefits				
210 Group Insurance – Contracted Provider	9,532.10	10,322.39		25,354.10
220 Social Security Contributions	78,261.78	75,094.29		188,024.90
230 PSERS Retirement Contributions	360,348.97	351,124.80		910,884.85
250 Unemployment Compensation		715.93		837.80
260 Workers' Compensation	4,888.69	4,686.29		12,262.54
270 Group Insurance – Self-Insurance	176,870.08	205,368.18		436,015.54
280 Other Post-Employment Benefits (OPEB)	27,252.00	33,308.01		60,560.01
Total Personnel Services – Employee Benefits	\$657,153.62	\$680,619.89		\$1,633,939.74
300 Purchased Professional and Technical Services				
330 Other Professional Services				215,987.84
340 Technical Services				9,160.74
Total Purchased Professional and Technical Services				\$225,148.58
500 Other Purchased Services				
520 Insurance – General				91,269.00
530 Communications	10,227.66	6,883.10		17,813.95
549 Other Advertising/Public Relations				5,669.55
550 Printing and Binding		3,000.00		3,231.40
580 Travel	796.18	4,818.04		6,273.04
599 Other Miscellaneous Purchased Services	5,819.22	270.13		6,089.35
Total Other Purchased Services	\$16,843.06	\$14,971.27		\$130,346.29
600 Supplies				
610 General Supplies	5,589.31	6,832.25		21,445.50
630 Food				478.14
640 Books and Periodicals	1,002.60			17,870.88
650 Supplies & Fees – Technology Related				10,500.00
Total Supplies	\$6,591.91	\$6,832.25		\$50,294.52
800 Other Objects				
810 Dues and Fees	2,026.15	3,906.85		27,484.49
890 Miscellaneous Expenditures	7,968.92	11,614.12		30,164.98
Total Other Objects	\$9,995.07	\$15,520.97		\$57,649.47
Total 2300 Support Services – Administration	\$1,797,028.12	\$1,784,166.36		\$4,857,673.61

LEA : 124154003 Kennett Consolidated SD

Printed 1/20/2023 2:18:51 PM

General Fund (10)

2310 Board Services

Elementary Secondary Federal Total

300 <u>Purchased Professional and Technical Services</u>				
330 Other Professional Services				13,085.00
Total Purchased Professional and Technical Services				\$13,085.00
500 <u>Other Purchased Services</u>				
520 Insurance – General				91,000.00
549 Other Advertising/Public Relations				481.35
580 Travel				462.62
Total Other Purchased Services				\$91,943.97
600 <u>Supplies</u>				
610 General Supplies				602.03
640 Books and Periodicals				39.00
650 Supplies & Fees – Technology Related				10,500.00
Total Supplies				\$11,141.03
800 <u>Other Objects</u>				
810 Dues and Fees				14,731.46
890 Miscellaneous Expenditures				916.04
Total Other Objects				\$15,647.50
Total 2310 Board Services				\$131,817.50

LEA : 124154003 Kennett Consolidated SD

Printed 1/20/2023 2:18:51 PM

General Fund (10)				
2320 Board Treasurer Services	<u>Elementary</u>	<u>Secondary</u>	<u>Federal</u>	<u>Total</u>
500 <u>Other Purchased Services</u>				
520 Insurance – General				269.00
Total Other Purchased Services				\$269.00
Total 2320 Board Treasurer Services				\$269.00

LEA : 124154003 Kennett Consolidated SD

Printed 1/20/2023 2:18:51 PM

General Fund (10)

2330 Tax Assessment and Collection Services	<u>Elementary</u>	<u>Secondary</u>	<u>Federal</u>	<u>Total</u>
300 <u>Purchased Professional and Technical Services</u>				
330 Other Professional Services				92,873.40
340 Technical Services				1,660.74
Total Purchased Professional and Technical Services				\$94,534.14
500 <u>Other Purchased Services</u>				
530 Communications				703.19
Total Other Purchased Services				\$703.19
Total 2330 Tax Assessment and Collection Services				\$95,237.33

LEA : 124154003 Kennett Consolidated SD

Printed 1/20/2023 2:18:51 PM

General Fund (10)

2350 Legal and Accounting Services	<u>Elementary</u>	<u>Secondary</u>	<u>Federal</u>	<u>Total</u>
300 <u>Purchased Professional and Technical Services</u>				
330 Other Professional Services				110,029.44
Total Purchased Professional and Technical Services				\$110,029.44
Total 2350 Legal and Accounting Services				\$110,029.44

LEA : 124154003 Kennett Consolidated SD

Printed 1/20/2023 2:18:51 PM

General Fund (10)

2360 Office of the Superintendent / Executive Director Services	<u>Elementary</u>	<u>Secondary</u>	<u>Federal</u>	<u>Total</u>
100 <u>Personnel Services – Salaries</u>				
100 Personnel Services – Salaries				525,513.20
Total Personnel Services – Salaries				\$525,513.20
200 <u>Personnel Services – Employee Benefits</u>				
210 Group Insurance – Contracted Provider				4,743.63
220 Social Security Contributions				29,962.21
230 PSERS Retirement Contributions				177,707.95
250 Unemployment Compensation				91.40
260 Workers' Compensation				2,404.90
270 Group Insurance – Self-Insurance				46,982.28
Total Personnel Services – Employee Benefits				\$261,892.37
500 <u>Other Purchased Services</u>				
530 Communications	590.32	581.65		1,171.97
580 Travel				196.20
Total Other Purchased Services	\$590.32	\$581.65		\$1,368.17
600 <u>Supplies</u>				
610 General Supplies				3,913.12
630 Food				478.14
640 Books and Periodicals				829.28
Total Supplies				\$5,220.54
800 <u>Other Objects</u>				
810 Dues and Fees				6,320.75
890 Miscellaneous Expenditures				9,665.90
Total Other Objects				\$15,986.65
Total 2360 Office of the Superintendent / Executive Director Services	\$590.32	\$581.65		\$809,980.93

LEA : 124154003 Kennett Consolidated SD

Printed 1/20/2023 2:18:51 PM

General Fund (10)

2370 Community Relations Services	<u>Elementary</u>	<u>Secondary</u>	<u>Federal</u>	<u>Total</u>
100 <u>Personnel Services – Salaries</u>				
100 Personnel Services – Salaries				62,115.37
Total Personnel Services – Salaries				\$62,115.37
200 <u>Personnel Services – Employee Benefits</u>				
210 Group Insurance – Contracted Provider				755.98
220 Social Security Contributions				4,706.62
230 PSERS Retirement Contributions				21,703.13
250 Unemployment Compensation				30.47
260 Workers' Compensation				282.66
270 Group Insurance – Self-Insurance				6,795.00
Total Personnel Services – Employee Benefits				\$34,273.86
300 <u>Purchased Professional and Technical Services</u>				
340 Technical Services				7,500.00
Total Purchased Professional and Technical Services				\$7,500.00
500 <u>Other Purchased Services</u>				
549 Other Advertising/Public Relations				5,188.20
550 Printing and Binding				231.40
Total Other Purchased Services				\$5,419.60
600 <u>Supplies</u>				
610 General Supplies				4,508.79
640 Books and Periodicals				16,000.00
Total Supplies				\$20,508.79
800 <u>Other Objects</u>				
810 Dues and Fees				499.28
Total Other Objects				\$499.28
Total 2370 Community Relations Services				\$130,316.90

LEA : 124154003 Kennett Consolidated SD

Printed 1/20/2023 2:18:51 PM

General Fund (10)

2380 Office of the Principal Services	Elementary	Secondary	Federal	Total
100 <u>Personnel Services – Salaries</u>				
100 Personnel Services – Salaries	1,106,444.46	1,066,221.98		2,172,666.44
Total Personnel Services – Salaries	\$1,106,444.46	\$1,066,221.98		\$2,172,666.44
200 <u>Personnel Services – Employee Benefits</u>				
210 Group Insurance – Contracted Provider	9,532.10	10,322.39		19,854.49
220 Social Security Contributions	78,261.78	75,094.29		153,356.07
230 PSERS Retirement Contributions	360,348.97	351,124.80		711,473.77
250 Unemployment Compensation		715.93		715.93
260 Workers' Compensation	4,888.69	4,686.29		9,574.98
270 Group Insurance – Self-Insurance	176,870.08	205,368.18		382,238.26
280 Other Post-Employment Benefits (OPEB)	27,252.00	33,308.01		60,560.01
Total Personnel Services – Employee Benefits	\$657,153.62	\$680,619.89		\$1,337,773.51
500 <u>Other Purchased Services</u>				
530 Communications	9,637.34	6,301.45		15,938.79
550 Printing and Binding		3,000.00		3,000.00
580 Travel	796.18	4,818.04		5,614.22
599 Other Miscellaneous Purchased Services	5,819.22	270.13		6,089.35
Total Other Purchased Services	\$16,252.74	\$14,389.62		\$30,642.36
600 <u>Supplies</u>				
610 General Supplies	5,589.31	6,832.25		12,421.56
640 Books and Periodicals	1,002.60			1,002.60
Total Supplies	\$6,591.91	\$6,832.25		\$13,424.16
800 <u>Other Objects</u>				
810 Dues and Fees	2,026.15	3,906.85		5,933.00
890 Miscellaneous Expenditures	7,968.92	11,614.12		19,583.04
Total Other Objects	\$9,995.07	\$15,520.97		\$25,516.04
Total 2380 Office of the Principal Services	\$1,796,437.80	\$1,783,584.71		\$3,580,022.51

LEA : 124154003 Kennett Consolidated SD

Printed 1/20/2023 2:18:51 PM

General Fund (10)

2400 Support Services – Pupil Health	<u>Elementary</u>	<u>Secondary</u>	<u>Federal</u>	<u>Total</u>
100 <u>Personnel Services – Salaries</u>				
100 Personnel Services – Salaries			54,280.82	622,062.08
Total Personnel Services – Salaries			\$54,280.82	\$622,062.08
200 <u>Personnel Services – Employee Benefits</u>				
210 Group Insurance – Contracted Provider			237.32	2,238.80
220 Social Security Contributions			4,002.91	46,876.81
230 PSERS Retirement Contributions			18,965.75	214,577.79
250 Unemployment Compensation				248.29
260 Workers' Compensation			247.09	2,843.94
270 Group Insurance – Self-Insurance			18,911.30	114,232.34
Total Personnel Services – Employee Benefits			\$42,364.37	\$381,017.97
300 <u>Purchased Professional and Technical Services</u>				
330 Other Professional Services				17,342.00
Total Purchased Professional and Technical Services				\$17,342.00
400 <u>Purchased Property Services</u>				
430 Repairs and Maintenance Services				210.00
Total Purchased Property Services				\$210.00
500 <u>Other Purchased Services</u>				
599 Other Miscellaneous Purchased Services				5,539.80
Total Other Purchased Services				\$5,539.80
600 <u>Supplies</u>				
610 General Supplies				13,875.96
640 Books and Periodicals				10,896.00
Total Supplies				\$24,771.96
Total 2400 Support Services – Pupil Health			\$96,645.19	\$1,050,943.81

LEA : 124154003 Kennett Consolidated SD

Printed 1/20/2023 2:18:51 PM

General Fund (10)

2420 Medical Services	<u>Elementary</u>	<u>Secondary</u>	<u>Federal</u>	<u>Total</u>
300 <u>Purchased Professional and Technical Services</u>				
330 Other Professional Services				1,635.00
Total Purchased Professional and Technical Services				\$1,635.00
400 <u>Purchased Property Services</u>				
430 Repairs and Maintenance Services				210.00
Total Purchased Property Services				\$210.00
600 <u>Supplies</u>				
610 General Supplies				5,799.14
Total Supplies				\$5,799.14
Total 2420 Medical Services				\$7,644.14

LEA : 124154003 Kennett Consolidated SD

Printed 1/20/2023 2:18:51 PM

General Fund (10)

2430 Dental Services

Elementary Secondary Federal Total

300 Purchased Professional and Technical Services

330 Other Professional Services 14,925.00

Total Purchased Professional and Technical Services \$14,925.00

600 Supplies

610 General Supplies 1,015.57

Total Supplies \$1,015.57

Total 2430 Dental Services \$15,940.57

LEA : 124154003 Kennett Consolidated SD

Printed 1/20/2023 2:18:51 PM

General Fund (10)				
2440 Nursing Services				
	<u>Elementary</u>	<u>Secondary</u>	<u>Federal</u>	<u>Total</u>
100 <u>Personnel Services – Salaries</u>				
100 Personnel Services – Salaries			54,280.82	622,062.08
Total Personnel Services – Salaries			\$54,280.82	\$622,062.08
200 <u>Personnel Services – Employee Benefits</u>				
210 Group Insurance – Contracted Provider			237.32	2,238.80
220 Social Security Contributions			4,002.91	46,876.81
230 PSERS Retirement Contributions			18,965.75	214,577.79
250 Unemployment Compensation				248.29
260 Workers' Compensation			247.09	2,843.94
270 Group Insurance – Self-Insurance			18,911.30	114,232.34
Total Personnel Services – Employee Benefits			\$42,364.37	\$381,017.97
300 <u>Purchased Professional and Technical Services</u>				
330 Other Professional Services				782.00
Total Purchased Professional and Technical Services				\$782.00
500 <u>Other Purchased Services</u>				
599 Other Miscellaneous Purchased Services				5,539.80
Total Other Purchased Services				\$5,539.80
600 <u>Supplies</u>				
610 General Supplies				7,061.25
640 Books and Periodicals				10,896.00
Total Supplies				\$17,957.25
Total 2440 Nursing Services			\$96,645.19	\$1,027,359.10

LEA : 124154003 Kennett Consolidated SD

Printed 1/20/2023 2:18:51 PM

General Fund (10)				
2500 Support Services – Business	<u>Elementary</u>	<u>Secondary</u>	<u>Federal</u>	<u>Total</u>
100 <u>Personnel Services – Salaries</u>				
100 Personnel Services – Salaries				675,660.18
Total Personnel Services – Salaries				\$675,660.18
200 <u>Personnel Services – Employee Benefits</u>				
210 Group Insurance – Contracted Provider				4,139.57
220 Social Security Contributions				44,279.77
230 PSERS Retirement Contributions				226,068.24
250 Unemployment Compensation				198.02
260 Workers' Compensation				3,045.66
270 Group Insurance – Self-Insurance				60,302.40
Total Personnel Services – Employee Benefits				\$338,033.66
300 <u>Purchased Professional and Technical Services</u>				
330 Other Professional Services				27,558.64
340 Technical Services				24,390.55
390 Other Purchased Professional and Technical Services				9,375.42
Total Purchased Professional and Technical Services				\$61,324.61
500 <u>Other Purchased Services</u>				
530 Communications				3,047.11
549 Other Advertising/Public Relations				130.65
Total Other Purchased Services				\$3,177.76
600 <u>Supplies</u>				
610 General Supplies				2,988.93
640 Books and Periodicals				582.40
Total Supplies				\$3,571.33
800 <u>Other Objects</u>				
810 Dues and Fees				103,964.17
890 Miscellaneous Expenditures				562.15
Total Other Objects				\$104,526.32
Total 2500 Support Services – Business				\$1,186,293.86

LEA : 124154003 Kennett Consolidated SD

Printed 1/20/2023 2:18:51 PM

General Fund (10)

2510 Fiscal Services

	<u>Elementary</u>	<u>Secondary</u>	<u>Federal</u>	<u>Total</u>
100 <u>Personnel Services – Salaries</u>				
100 Personnel Services – Salaries				610,577.81
Total Personnel Services – Salaries				\$610,577.81
200 <u>Personnel Services – Employee Benefits</u>				
210 Group Insurance – Contracted Provider				3,608.45
220 Social Security Contributions				39,424.64
230 PSERS Retirement Contributions				203,952.95
250 Unemployment Compensation				198.02
260 Workers' Compensation				2,757.55
270 Group Insurance – Self-Insurance				60,302.40
Total Personnel Services – Employee Benefits				\$310,244.01
300 <u>Purchased Professional and Technical Services</u>				
330 Other Professional Services				27,558.64
340 Technical Services				24,390.55
Total Purchased Professional and Technical Services				\$51,949.19
500 <u>Other Purchased Services</u>				
530 Communications				3,047.11
549 Other Advertising/Public Relations				130.65
Total Other Purchased Services				\$3,177.76
600 <u>Supplies</u>				
610 General Supplies				2,988.93
640 Books and Periodicals				582.40
Total Supplies				\$3,571.33
800 <u>Other Objects</u>				
810 Dues and Fees				103,964.17
890 Miscellaneous Expenditures				562.15
Total Other Objects				\$104,526.32
Total 2510 Fiscal Services				\$1,084,046.42

LEA : 124154003 Kennett Consolidated SD

Printed 1/20/2023 2:18:51 PM

General Fund (10)				
2511 Supervision of Fiscal Services - Head of Component	<u>Elementary</u>	<u>Secondary</u>	<u>Federal</u>	<u>Total</u>
100 <u>Personnel Services – Salaries</u>				
100 Personnel Services – Salaries				252,293.88
Total Personnel Services – Salaries				\$252,293.88
200 <u>Personnel Services – Employee Benefits</u>				
210 Group Insurance – Contracted Provider				1,816.01
220 Social Security Contributions				12,727.25
230 PSERS Retirement Contributions				83,226.44
260 Workers' Compensation				1,144.39
270 Group Insurance – Self-Insurance				19,488.84
Total Personnel Services – Employee Benefits				\$118,402.93
300 <u>Purchased Professional and Technical Services</u>				
330 Other Professional Services				4,133.64
340 Technical Services				24,390.55
Total Purchased Professional and Technical Services				\$28,524.19
500 <u>Other Purchased Services</u>				
530 Communications				468.78
549 Other Advertising/Public Relations				130.65
Total Other Purchased Services				\$599.43
600 <u>Supplies</u>				
610 General Supplies				2,526.74
640 Books and Periodicals				582.40
Total Supplies				\$3,109.14
800 <u>Other Objects</u>				
810 Dues and Fees				4,924.00
890 Miscellaneous Expenditures				382.53
Total Other Objects				\$5,306.53
Total 2511 Supervision of Fiscal Services - Head of Component				\$408,236.10

LEA : 124154003 Kennett Consolidated SD

Printed 1/20/2023 2:18:51 PM

General Fund (10)

2513 Receiving and Disbursing Funds Services	<u>Elementary</u>	<u>Secondary</u>	<u>Federal</u>	<u>Total</u>
100 <u>Personnel Services – Salaries</u>				
100 Personnel Services – Salaries				143,068.05
Total Personnel Services – Salaries				\$143,068.05
200 <u>Personnel Services – Employee Benefits</u>				
210 Group Insurance – Contracted Provider				457.44
220 Social Security Contributions				10,689.39
230 PSERS Retirement Contributions				48,426.81
250 Unemployment Compensation				198.02
260 Workers' Compensation				646.08
270 Group Insurance – Self-Insurance				22,693.56
Total Personnel Services – Employee Benefits				\$83,111.30
500 <u>Other Purchased Services</u>				
530 Communications				1,171.97
Total Other Purchased Services				\$1,171.97
800 <u>Other Objects</u>				
810 Dues and Fees				98,955.17
Total Other Objects				\$98,955.17
Total 2513 Receiving and Disbursing Funds Services				\$326,306.49

LEA : 124154003 Kennett Consolidated SD

Printed 1/20/2023 2:18:51 PM

General Fund (10)

2514 Payroll Services

	<u>Elementary</u>	<u>Secondary</u>	<u>Federal</u>	<u>Total</u>
100 <u>Personnel Services – Salaries</u>				
100 Personnel Services – Salaries				89,134.58
Total Personnel Services – Salaries				\$89,134.58
200 <u>Personnel Services – Employee Benefits</u>				
210 Group Insurance – Contracted Provider				183.72
220 Social Security Contributions				6,510.19
230 PSERS Retirement Contributions				30,052.32
260 Workers' Compensation				393.41
270 Group Insurance – Self-Insurance				9,060.00
Total Personnel Services – Employee Benefits				\$46,199.64
500 <u>Other Purchased Services</u>				
530 Communications				937.58
Total Other Purchased Services				\$937.58
600 <u>Supplies</u>				
610 General Supplies				462.19
Total Supplies				\$462.19
Total 2514 Payroll Services				\$136,733.99

LEA : 124154003 Kennett Consolidated SD

Printed 1/20/2023 2:18:51 PM

General Fund (10)

2515 Financial Accounting Services	<u>Elementary</u>	<u>Secondary</u>	<u>Federal</u>	<u>Total</u>
100 <u>Personnel Services – Salaries</u>				
100 Personnel Services – Salaries				126,081.30
Total Personnel Services – Salaries				\$126,081.30
200 <u>Personnel Services – Employee Benefits</u>				
210 Group Insurance – Contracted Provider				1,151.28
220 Social Security Contributions				9,497.81
230 PSERS Retirement Contributions				42,247.38
260 Workers' Compensation				573.67
270 Group Insurance – Self-Insurance				9,060.00
Total Personnel Services – Employee Benefits				\$62,530.14
500 <u>Other Purchased Services</u>				
530 Communications				468.78
Total Other Purchased Services				\$468.78
800 <u>Other Objects</u>				
810 Dues and Fees				85.00
Total Other Objects				\$85.00
Total 2515 Financial Accounting Services				\$189,165.22

LEA : 124154003 Kennett Consolidated SD

Printed 1/20/2023 2:18:51 PM

General Fund (10)

2516 Internal Auditing Services

Elementary

Secondary

Federal

Total

300 Purchased Professional and Technical Services

330 Other Professional Services

23,425.00

Total Purchased Professional and Technical Services				\$23,425.00
Total 2516 Internal Auditing Services				\$23,425.00

LEA : 124154003 Kennett Consolidated SD

Printed 1/20/2023 2:18:51 PM

General Fund (10)				
2519 Other Fiscal Services	<u>Elementary</u>	<u>Secondary</u>	<u>Federal</u>	<u>Total</u>
800 <u>Other Objects</u>				
890 Miscellaneous Expenditures				179.62
Total Other Objects				\$179.62
Total 2519 Other Fiscal Services				\$179.62

LEA : 124154003 Kennett Consolidated SD

Printed 1/20/2023 2:18:51 PM

General Fund (10)

2530 Warehousing and Distributing Services	<u>Elementary</u>	<u>Secondary</u>	<u>Federal</u>	<u>Total</u>
300 <u>Purchased Professional and Technical Services</u>				
390 Other Purchased Professional and Technical Services				9,375.42
Total Purchased Professional and Technical Services				\$9,375.42
Total 2530 Warehousing and Distributing Services				\$9,375.42

LEA : 124154003 Kennett Consolidated SD

Printed 1/20/2023 2:18:51 PM

General Fund (10)

2590 Other Support Services – Business	<u>Elementary</u>	<u>Secondary</u>	<u>Federal</u>	<u>Total</u>
100 <u>Personnel Services – Salaries</u>				
100 Personnel Services – Salaries				65,082.37
Total Personnel Services – Salaries				\$65,082.37
200 <u>Personnel Services – Employee Benefits</u>				
210 Group Insurance – Contracted Provider				531.12
220 Social Security Contributions				4,855.13
230 PSERS Retirement Contributions				22,115.29
260 Workers' Compensation				288.11
Total Personnel Services – Employee Benefits				\$27,789.65
Total 2590 Other Support Services – Business				\$92,872.02

LEA : 124154003 Kennett Consolidated SD

Printed 1/20/2023 2:18:51 PM

General Fund (10)

2600 Operation and Maintenance of Plant Services	Elementary	Secondary	Federal	Total
100 <u>Personnel Services – Salaries</u>				
100 Personnel Services – Salaries				2,278,301.49
Total Personnel Services – Salaries				\$2,278,301.49
200 <u>Personnel Services – Employee Benefits</u>				
210 Group Insurance – Contracted Provider				13,744.93
220 Social Security Contributions				169,364.09
230 PSERS Retirement Contributions				768,802.85
250 Unemployment Compensation				1,416.76
260 Workers' Compensation				10,387.85
270 Group Insurance – Self-Insurance				752,496.06
Total Personnel Services – Employee Benefits				\$1,716,212.54
300 <u>Purchased Professional and Technical Services</u>				
330 Other Professional Services				32,110.51
350 Security / Safety Services				174,844.51
Total Purchased Professional and Technical Services				\$206,955.02
400 <u>Purchased Property Services</u>				
410 Cleaning Services				118,600.09
420 Utility Services				237,525.85
430 Repairs and Maintenance Services			4,500.00	804,163.24
440 Rentals				68,109.38
460 Extermination Services				9,314.16
Total Purchased Property Services			\$4,500.00	\$1,237,712.72
500 <u>Other Purchased Services</u>				
521 Fire Insurance				147,551.35
523 General Property and Liability Insurance				106,587.00
530 Communications				107.87
Total Other Purchased Services				\$254,246.22
600 <u>Supplies</u>				
610 General Supplies	296,530.50	292,174.06	2,902.51	591,607.07
620 Energy				925,078.43
Total Supplies	\$296,530.50	\$292,174.06	\$2,902.51	\$1,516,685.50
700 <u>Property</u>				
752 Capital Equipment – Original and Additional				14,042.20
762 Capitalized Equipment - Replacement				50,661.79
Total Property				\$64,703.99
800 <u>Other Objects</u>				
810 Dues and Fees				35.00
890 Miscellaneous Expenditures				19,374.21
Total Other Objects				\$19,409.21
Total 2600 Operation and Maintenance of Plant Services	\$296,530.50	\$292,174.06	\$7,402.51	\$7,294,226.69

LEA : 124154003 Kennett Consolidated SD

Printed 1/20/2023 2:18:51 PM

General Fund (10)				
2610 Supervision of Operation and Maintenance of Plant Services	<u>Elementary</u>	<u>Secondary</u>	<u>Federal</u>	<u>Total</u>
100 <u>Personnel Services – Salaries</u>				
100 Personnel Services – Salaries				295,458.20
Total Personnel Services – Salaries				\$295,458.20
200 <u>Personnel Services – Employee Benefits</u>				
210 Group Insurance – Contracted Provider				2,193.24
220 Social Security Contributions				22,126.89
230 PSERS Retirement Contributions				100,188.58
260 Workers' Compensation				1,344.65
270 Group Insurance – Self-Insurance				68,080.68
Total Personnel Services – Employee Benefits				\$193,934.04
300 <u>Purchased Professional and Technical Services</u>				
330 Other Professional Services				32,110.51
Total Purchased Professional and Technical Services				\$32,110.51
500 <u>Other Purchased Services</u>				
530 Communications				105.71
Total Other Purchased Services				\$105.71
600 <u>Supplies</u>				
610 General Supplies	13.68	13.47		27.15
Total Supplies	\$13.68	\$13.47		\$27.15
800 <u>Other Objects</u>				
810 Dues and Fees				35.00
890 Miscellaneous Expenditures				19,373.61
Total Other Objects				\$19,408.61
Total 2610 Supervision of Operation and Maintenance of Plant Services	\$13.68	\$13.47		\$541,044.22

LEA : 124154003 Kennett Consolidated SD

Printed 1/20/2023 2:18:51 PM

General Fund (10)				
2611 Supervision of Operation and Maintenance of Plant Services – Head of Component	<u>Elementary</u>	<u>Secondary</u>	<u>Federal</u>	<u>Total</u>
100 <u>Personnel Services – Salaries</u>				
100 Personnel Services – Salaries				295,458.20
Total Personnel Services – Salaries				\$295,458.20
200 <u>Personnel Services – Employee Benefits</u>				
210 Group Insurance – Contracted Provider				2,193.24
220 Social Security Contributions				22,126.89
230 PSERS Retirement Contributions				100,188.58
260 Workers' Compensation				1,344.65
270 Group Insurance – Self-Insurance				68,080.68
Total Personnel Services – Employee Benefits				\$193,934.04
300 <u>Purchased Professional and Technical Services</u>				
330 Other Professional Services				32,110.51
Total Purchased Professional and Technical Services				\$32,110.51
500 <u>Other Purchased Services</u>				
530 Communications				105.71
Total Other Purchased Services				\$105.71
600 <u>Supplies</u>				
610 General Supplies	13.68	13.47		27.15
Total Supplies	\$13.68	\$13.47		\$27.15
800 <u>Other Objects</u>				
810 Dues and Fees				35.00
890 Miscellaneous Expenditures				19,373.61
Total Other Objects				\$19,408.61
Total 2611 Supervision of Operation and Maintenance of Plant Services – Head of Component	\$13.68	\$13.47		\$541,044.22

LEA : 124154003 Kennett Consolidated SD

Printed 1/20/2023 2:18:51 PM

General Fund (10)

2620 Operation of Buildings Services	Elementary	Secondary	Federal	Total
100 Personnel Services – Salaries				
100 Personnel Services – Salaries				1,466,031.48
Total Personnel Services – Salaries				\$1,466,031.48
200 Personnel Services – Employee Benefits				
210 Group Insurance – Contracted Provider				9,011.99
220 Social Security Contributions				108,868.83
230 PSERS Retirement Contributions				489,495.22
250 Unemployment Compensation				1,416.76
260 Workers' Compensation				6,694.99
270 Group Insurance – Self-Insurance				528,407.40
Total Personnel Services – Employee Benefits				\$1,143,895.19
400 Purchased Property Services				
410 Cleaning Services				53,528.99
420 Utility Services				237,525.85
430 Repairs and Maintenance Services			4,500.00	781,271.45
440 Rentals				2,935.12
460 Extermination Services				9,314.16
Total Purchased Property Services			\$4,500.00	\$1,084,575.57
500 Other Purchased Services				
521 Fire Insurance				147,551.35
523 General Property and Liability Insurance				106,587.00
530 Communications				2.16
Total Other Purchased Services				\$254,140.51
600 Supplies				
610 General Supplies	234,968.61	231,516.61	2,902.51	469,387.73
620 Energy				925,078.43
Total Supplies	\$234,968.61	\$231,516.61	\$2,902.51	\$1,394,466.16
700 Property				
752 Capital Equipment – Original and Additional				13,033.20
762 Capitalized Equipment - Replacement				50,661.79
Total Property				\$63,694.99
800 Other Objects				
890 Miscellaneous Expenditures				0.60
Total Other Objects				\$0.60
Total 2620 Operation of Buildings Services	\$234,968.61	\$231,516.61	\$7,402.51	\$5,406,804.50

LEA : 124154003 Kennett Consolidated SD

Printed 1/20/2023 2:18:51 PM

General Fund (10)

2630 Care and Upkeep of Grounds Services	<u>Elementary</u>	<u>Secondary</u>	<u>Federal</u>	<u>Total</u>
100 <u>Personnel Services – Salaries</u>				
100 Personnel Services – Salaries				120,457.76
Total Personnel Services – Salaries				\$120,457.76
200 <u>Personnel Services – Employee Benefits</u>				
210 Group Insurance – Contracted Provider				634.82
220 Social Security Contributions				8,897.97
230 PSERS Retirement Contributions				41,443.46
260 Workers' Compensation				545.69
270 Group Insurance – Self-Insurance				35,328.42
Total Personnel Services – Employee Benefits				\$86,850.36
400 <u>Purchased Property Services</u>				
410 Cleaning Services				65,071.10
430 Repairs and Maintenance Services				2,260.00
Total Purchased Property Services				\$67,331.10
600 <u>Supplies</u>				
610 General Supplies	48,340.77	47,630.58		95,971.35
Total Supplies	\$48,340.77	\$47,630.58		\$95,971.35
700 <u>Property</u>				
752 Capital Equipment – Original and Additional				1,009.00
Total Property				\$1,009.00
Total 2630 Care and Upkeep of Grounds Services	\$48,340.77	\$47,630.58		\$371,619.57

LEA : 124154003 Kennett Consolidated SD

Printed 1/20/2023 2:18:51 PM

General Fund (10)

2640 Care and Upkeep of Equipment Services	<u>Elementary</u>	<u>Secondary</u>	<u>Federal</u>	<u>Total</u>
100 <u>Personnel Services – Salaries</u>				
100 Personnel Services – Salaries				396,354.05
Total Personnel Services – Salaries				\$396,354.05
200 <u>Personnel Services – Employee Benefits</u>				
210 Group Insurance – Contracted Provider				1,904.88
220 Social Security Contributions				29,470.40
230 PSERS Retirement Contributions				137,675.59
260 Workers' Compensation				1,802.52
270 Group Insurance – Self-Insurance				120,679.56
Total Personnel Services – Employee Benefits				\$291,532.95
400 <u>Purchased Property Services</u>				
430 Repairs and Maintenance Services				113.00
440 Rentals				65,174.26
Total Purchased Property Services				\$65,287.26
600 <u>Supplies</u>				
610 General Supplies	1,692.25	1,667.39		3,359.64
Total Supplies	\$1,692.25	\$1,667.39		\$3,359.64
Total 2640 Care and Upkeep of Equipment Services	\$1,692.25	\$1,667.39		\$756,533.90

LEA : 124154003 Kennett Consolidated SD

Printed 1/20/2023 2:18:51 PM

General Fund (10)				
2650 Vehicle Operation and Maintenance Services (Other Than Student Transportation Vehicles)	<u>Elementary</u>	<u>Secondary</u>	<u>Federal</u>	<u>Total</u>
400 <u>Purchased Property Services</u>				
430 Repairs and Maintenance Services				20,518.79
Total Purchased Property Services				\$20,518.79
600 <u>Supplies</u>				
610 General Supplies	1,939.85	1,911.35		3,851.20
Total Supplies	\$1,939.85	\$1,911.35		\$3,851.20
Total 2650 Vehicle Operation and Maintenance Services (Other Than Student Transportation Vehicles)	\$1,939.85	\$1,911.35		\$24,369.99

LEA : 124154003 Kennett Consolidated SD

Printed 1/20/2023 2:18:51 PM

General Fund (10)

2660 Safety and Security Services	<u>Elementary</u>	<u>Secondary</u>	<u>Federal</u>	<u>Total</u>
300 <u>Purchased Professional and Technical Services</u>				
350 Security / Safety Services				174,844.51
Total Purchased Professional and Technical Services				\$174,844.51
600 <u>Supplies</u>				
610 General Supplies	9,575.34	9,434.66		19,010.00
Total Supplies	\$9,575.34	\$9,434.66		\$19,010.00
Total 2660 Safety and Security Services	\$9,575.34	\$9,434.66		\$193,854.51

LEA : 124154003 Kennett Consolidated SD

Printed 1/20/2023 2:18:51 PM

General Fund (10)				
2700 Student Transportation Services				
	<u>Elementary</u>	<u>Secondary</u>	<u>Federal</u>	<u>Total</u>
100 <u>Personnel Services – Salaries</u>				
100 Personnel Services – Salaries				150,180.69
Total Personnel Services – Salaries				\$150,180.69
200 <u>Personnel Services – Employee Benefits</u>				
210 Group Insurance – Contracted Provider				1,401.48
220 Social Security Contributions				11,113.57
230 PSERS Retirement Contributions				50,570.32
250 Unemployment Compensation				60.93
260 Workers' Compensation				688.66
270 Group Insurance – Self-Insurance				40,873.92
Total Personnel Services – Employee Benefits				\$104,708.88
300 <u>Purchased Professional and Technical Services</u>				
340 Technical Services				21,425.00
Total Purchased Professional and Technical Services				\$21,425.00
400 <u>Purchased Property Services</u>				
430 Repairs and Maintenance Services				874.24
Total Purchased Property Services				\$874.24
500 <u>Other Purchased Services</u>				
513 Contracted Carriers			110,241.05	4,515,422.90
516 Student Transportation Services From the IU				32,723.66
522 Automotive Liability Insurance				61,425.10
580 Travel				674.89
Total Other Purchased Services			\$110,241.05	\$4,610,246.55
600 <u>Supplies</u>				
610 General Supplies				10,116.13
620 Energy				27,216.95
Total Supplies				\$37,333.08
700 <u>Property</u>				
752 Capital Equipment – Original and Additional				10,868.75
Total Property				\$10,868.75
800 <u>Other Objects</u>				
810 Dues and Fees				434.00
890 Miscellaneous Expenditures				1,679.80
Total Other Objects				\$2,113.80
Total 2700 Student Transportation Services			\$110,241.05	\$4,937,750.99

LEA : 124154003 Kennett Consolidated SD

Printed 1/20/2023 2:18:51 PM

General Fund (10)

2710 Supervision of Student Transportation Services	<u>Elementary</u>	<u>Secondary</u>	<u>Federal</u>	<u>Total</u>
100 <u>Personnel Services – Salaries</u>				
100 Personnel Services – Salaries				150,180.69
Total Personnel Services – Salaries				\$150,180.69
200 <u>Personnel Services – Employee Benefits</u>				
210 Group Insurance – Contracted Provider				1,401.48
220 Social Security Contributions				11,113.57
230 PSERS Retirement Contributions				50,570.32
250 Unemployment Compensation				60.93
260 Workers' Compensation				688.66
270 Group Insurance – Self-Insurance				40,873.92
Total Personnel Services – Employee Benefits				\$104,708.88
300 <u>Purchased Professional and Technical Services</u>				
340 Technical Services				21,425.00
Total Purchased Professional and Technical Services				\$21,425.00
500 <u>Other Purchased Services</u>				
580 Travel				674.89
Total Other Purchased Services				\$674.89
600 <u>Supplies</u>				
610 General Supplies				10,116.13
Total Supplies				\$10,116.13
800 <u>Other Objects</u>				
810 Dues and Fees				434.00
Total Other Objects				\$434.00
Total 2710 Supervision of Student Transportation Services				\$287,539.59

LEA : 124154003 Kennett Consolidated SD

Printed 1/20/2023 2:18:51 PM

General Fund (10)				
2711 Supervision of Student Transportation Services – Head of Component	<u>Elementary</u>	<u>Secondary</u>	<u>Federal</u>	<u>Total</u>
100 <u>Personnel Services – Salaries</u>				
100 Personnel Services – Salaries				150,180.69
Total Personnel Services – Salaries				\$150,180.69
200 <u>Personnel Services – Employee Benefits</u>				
210 Group Insurance – Contracted Provider				1,401.48
220 Social Security Contributions				11,113.57
230 PSERS Retirement Contributions				50,570.32
250 Unemployment Compensation				60.93
260 Workers' Compensation				688.66
270 Group Insurance – Self-Insurance				40,873.92
Total Personnel Services – Employee Benefits				\$104,708.88
300 <u>Purchased Professional and Technical Services</u>				
340 Technical Services				21,425.00
Total Purchased Professional and Technical Services				\$21,425.00
500 <u>Other Purchased Services</u>				
580 Travel				674.89
Total Other Purchased Services				\$674.89
600 <u>Supplies</u>				
610 General Supplies				10,116.13
Total Supplies				\$10,116.13
800 <u>Other Objects</u>				
810 Dues and Fees				434.00
Total Other Objects				\$434.00
Total 2711 Supervision of Student Transportation Services – Head of Component				\$287,539.59

LEA : 124154003 Kennett Consolidated SD

Printed 1/20/2023 2:18:51 PM

General Fund (10)

2720 Vehicle Operation Services

Elementary Secondary Federal Total

500 Other Purchased Services

513 Contracted Carriers			110,241.05	3,107,045.25
516 Student Transportation Services From the IU				32,723.66
522 Automotive Liability Insurance				61,425.10

Total Other Purchased Services			\$110,241.05	\$3,201,194.01
---------------------------------------	--	--	---------------------	-----------------------

800 Other Objects

890 Miscellaneous Expenditures				1,319.80
--------------------------------	--	--	--	----------

Total Other Objects				\$1,319.80
----------------------------	--	--	--	-------------------

Total 2720 Vehicle Operation Services			\$110,241.05	\$3,202,513.81
--	--	--	---------------------	-----------------------

LEA : 124154003 Kennett Consolidated SD

Printed 1/20/2023 2:18:51 PM

General Fund (10)				
2740 Vehicle Servicing and Maintenance Services	<u>Elementary</u>	<u>Secondary</u>	<u>Federal</u>	<u>Total</u>
400 <u>Purchased Property Services</u>				
430 Repairs and Maintenance Services				874.24
Total Purchased Property Services				\$874.24
500 <u>Other Purchased Services</u>				
513 Contracted Carriers				180,742.47
Total Other Purchased Services				\$180,742.47
600 <u>Supplies</u>				
620 Energy				27,216.95
Total Supplies				\$27,216.95
700 <u>Property</u>				
752 Capital Equipment – Original and Additional				10,868.75
Total Property				\$10,868.75
Total 2740 Vehicle Servicing and Maintenance Services				\$219,702.41

LEA : 124154003 Kennett Consolidated SD

Printed 1/20/2023 2:18:51 PM

General Fund (10)				
2750 Nonpublic Transportation	<u>Elementary</u>	<u>Secondary</u>	<u>Federal</u>	<u>Total</u>
500 <u>Other Purchased Services</u>				
513 Contracted Carriers				1,227,635.18
Total Other Purchased Services				\$1,227,635.18
800 <u>Other Objects</u>				
890 Miscellaneous Expenditures				360.00
Total Other Objects				\$360.00
Total 2750 Nonpublic Transportation				\$1,227,995.18

LEA : 124154003 Kennett Consolidated SD

Printed 1/20/2023 2:18:51 PM

General Fund (10)

2800 Support Services – Central

	<u>Elementary</u>	<u>Secondary</u>	<u>Federal</u>	<u>Total</u>
100 <u>Personnel Services – Salaries</u>				
100 Personnel Services – Salaries			7,215.40	1,016,092.90
Total Personnel Services – Salaries			\$7,215.40	\$1,016,092.90
200 <u>Personnel Services – Employee Benefits</u>				
210 Group Insurance – Contracted Provider			58.78	8,226.45
220 Social Security Contributions			552.00	76,230.22
230 PSERS Retirement Contributions			2,521.08	342,603.80
240 Tuition Reimbursement				35,003.00
250 Unemployment Compensation				304.65
260 Workers' Compensation			32.84	4,637.87
270 Group Insurance – Self-Insurance			3,406.16	210,973.52
Total Personnel Services – Employee Benefits			\$6,570.86	\$677,979.51
300 <u>Purchased Professional and Technical Services</u>				
322 Professional Educational Services – Ius			74,310.00	88,658.20
330 Other Professional Services				87,280.00
340 Technical Services				99,012.99
Total Purchased Professional and Technical Services			\$74,310.00	\$274,951.19
400 <u>Purchased Property Services</u>				
430 Repairs and Maintenance Services				(2,360.00)
Total Purchased Property Services				(\$2,360.00)
500 <u>Other Purchased Services</u>				
530 Communications			13,146.75	218,129.92
549 Other Advertising/Public Relations				1,272.75
550 Printing and Binding				98.00
580 Travel				4,274.97
Total Other Purchased Services			\$13,146.75	\$223,775.64
600 <u>Supplies</u>				
610 General Supplies				73,604.21
630 Food				964.88
640 Books and Periodicals				325,672.93
Total Supplies				\$400,242.02
700 <u>Property</u>				
752 Capital Equipment – Original and Additional				320,235.37
756 Capitalized Technology Equipment – Original			8,456.63	8,456.63
758 Capitalized Technology Software - Original				142.03
762 Capitalized Equipment - Replacement				558.00
Total Property			\$8,456.63	\$329,392.03
800 <u>Other Objects</u>				
810 Dues and Fees				5,693.00
890 Miscellaneous Expenditures				25.00
Total Other Objects				\$5,718.00
Total 2800 Support Services – Central			\$109,699.64	\$2,925,791.29

LEA : 124154003 Kennett Consolidated SD

Printed 1/20/2023 2:18:51 PM

General Fund (10)				
2830 Staff Services				
	<u>Elementary</u>	<u>Secondary</u>	<u>Federal</u>	<u>Total</u>
100 <u>Personnel Services – Salaries</u>				
100 Personnel Services – Salaries				216,934.35
Total Personnel Services – Salaries				\$216,934.35
200 <u>Personnel Services – Employee Benefits</u>				
210 Group Insurance – Contracted Provider				2,193.45
220 Social Security Contributions				16,070.94
230 PSERS Retirement Contributions				74,789.15
240 Tuition Reimbursement				35,003.00
260 Workers' Compensation				984.41
270 Group Insurance – Self-Insurance				40,768.40
Total Personnel Services – Employee Benefits				\$169,809.35
300 <u>Purchased Professional and Technical Services</u>				
322 Professional Educational Services – Ius				14,348.20
330 Other Professional Services				87,280.00
Total Purchased Professional and Technical Services				\$101,628.20
500 <u>Other Purchased Services</u>				
530 Communications				1,171.93
549 Other Advertising/Public Relations				1,272.75
550 Printing and Binding				98.00
580 Travel				1,069.68
Total Other Purchased Services				\$3,612.36
600 <u>Supplies</u>				
610 General Supplies				2,708.21
630 Food				964.88
640 Books and Periodicals				22,179.78
Total Supplies				\$25,852.87
700 <u>Property</u>				
762 Capitalized Equipment - Replacement				558.00
Total Property				\$558.00
800 <u>Other Objects</u>				
810 Dues and Fees				5,693.00
890 Miscellaneous Expenditures				25.00
Total Other Objects				\$5,718.00
Total 2830 Staff Services				\$524,113.13

LEA : 124154003 Kennett Consolidated SD

Printed 1/20/2023 2:18:51 PM

General Fund (10)

2832 Recruitment and Placement Services

Elementary Secondary Federal Total

100 <u>Personnel Services – Salaries</u>				
100 Personnel Services – Salaries				128,569.23
Total Personnel Services – Salaries				\$128,569.23
200 <u>Personnel Services – Employee Benefits</u>				
210 Group Insurance – Contracted Provider				1,363.89
220 Social Security Contributions				9,697.46
230 PSERS Retirement Contributions				44,922.16
260 Workers' Compensation				584.88
270 Group Insurance – Self-Insurance				18,733.88
Total Personnel Services – Employee Benefits				\$75,302.27
300 <u>Purchased Professional and Technical Services</u>				
330 Other Professional Services				87,280.00
Total Purchased Professional and Technical Services				\$87,280.00
500 <u>Other Purchased Services</u>				
530 Communications				1,171.93
549 Other Advertising/Public Relations				1,272.75
550 Printing and Binding				98.00
580 Travel				1,069.68
Total Other Purchased Services				\$3,612.36
600 <u>Supplies</u>				
610 General Supplies				2,708.21
630 Food				964.88
640 Books and Periodicals				22,179.78
Total Supplies				\$25,852.87
700 <u>Property</u>				
762 Capitalized Equipment - Replacement				558.00
Total Property				\$558.00
800 <u>Other Objects</u>				
810 Dues and Fees				5,693.00
890 Miscellaneous Expenditures				25.00
Total Other Objects				\$5,718.00
Total 2832 Recruitment and Placement Services				\$326,892.73

LEA : 124154003 Kennett Consolidated SD

Printed 1/20/2023 2:18:51 PM

General Fund (10)

2833 Staff Accounting Services

	<u>Elementary</u>	<u>Secondary</u>	<u>Federal</u>	<u>Total</u>
100 <u>Personnel Services – Salaries</u>				
100 Personnel Services – Salaries				88,365.12
Total Personnel Services – Salaries				\$88,365.12
200 <u>Personnel Services – Employee Benefits</u>				
210 Group Insurance – Contracted Provider				829.56
220 Social Security Contributions				6,373.48
230 PSERS Retirement Contributions				29,866.99
260 Workers' Compensation				399.53
270 Group Insurance – Self-Insurance				22,034.52
Total Personnel Services – Employee Benefits				\$59,504.08
Total 2833 Staff Accounting Services				\$147,869.20

LEA : 124154003 Kennett Consolidated SD

Printed 1/20/2023 2:18:51 PM

General Fund (10)

2834 Staff Development Services – Non-Instructional, Certified Staff Only	<u>Elementary</u>	<u>Secondary</u>	<u>Federal</u>	<u>Total</u>
200 <u>Personnel Services – Employee Benefits</u>				
240 Tuition Reimbursement				27,239.00
Total Personnel Services – Employee Benefits				\$27,239.00
Total 2834 Staff Development Services – Non-Instructional, Certified Staff Only				\$27,239.00

General Fund (10)

2836 Staff Development Services – Non-Instructional, Non-Certified Staff Only	<u>Elementary</u>	<u>Secondary</u>	<u>Federal</u>	<u>Total</u>
200 <u>Personnel Services – Employee Benefits</u>				
240 Tuition Reimbursement				7,764.00
Total Personnel Services – Employee Benefits				\$7,764.00
300 <u>Purchased Professional and Technical Services</u>				
322 Professional Educational Services – Ius				14,348.20
Total Purchased Professional and Technical Services				\$14,348.20
Total 2836 Staff Development Services – Non-Instructional, Non-Certified Staff Only				\$22,112.20

LEA : 124154003 Kennett Consolidated SD

Printed 1/20/2023 2:18:51 PM

General Fund (10)					
2840 Data Processing Services		Elementary	Secondary	Federal	Total
100 Personnel Services – Salaries					
100 Personnel Services – Salaries				7,215.40	799,158.55
Total Personnel Services – Salaries				\$7,215.40	\$799,158.55
200 Personnel Services – Employee Benefits					
210 Group Insurance – Contracted Provider				58.78	6,033.00
220 Social Security Contributions				552.00	60,159.28
230 PSERS Retirement Contributions				2,521.08	267,814.65
250 Unemployment Compensation					304.65
260 Workers' Compensation				32.84	3,653.46
270 Group Insurance – Self-Insurance				3,406.16	170,205.12
Total Personnel Services – Employee Benefits				\$6,570.86	\$508,170.16
300 Purchased Professional and Technical Services					
322 Professional Educational Services – Ius				74,310.00	74,310.00
340 Technical Services					99,012.99
Total Purchased Professional and Technical Services				\$74,310.00	\$173,322.99
400 Purchased Property Services					
430 Repairs and Maintenance Services					(2,360.00)
Total Purchased Property Services					(\$2,360.00)
500 Other Purchased Services					
530 Communications				13,146.75	216,957.99
580 Travel					3,205.29
Total Other Purchased Services				\$13,146.75	\$220,163.28
600 Supplies					
610 General Supplies					70,896.00
640 Books and Periodicals					303,493.15
Total Supplies					\$374,389.15
700 Property					
752 Capital Equipment – Original and Additional					320,235.37
756 Capitalized Technology Equipment – Original				8,456.63	8,456.63
758 Capitalized Technology Software - Original					142.03
Total Property				\$8,456.63	\$328,834.03
Total 2840 Data Processing Services				\$109,699.64	\$2,401,678.16

LEA : 124154003 Kennett Consolidated SD

Printed 1/20/2023 2:18:51 PM

General Fund (10)				
2900 Other Support Services	<u>Elementary</u>	<u>Secondary</u>	<u>Federal</u>	<u>Total</u>
500 <u>Other Purchased Services</u>				
595 IU Payments By Withholding				33,525.53
Total Other Purchased Services				\$33,525.53
Total 2900 Other Support Services				\$33,525.53

LEA : 124154003 Kennett Consolidated SD

Printed 1/20/2023 2:18:51 PM

General Fund (10)

2910 Support Services Not Listed Elsewhere In the 2000 Series

Elementary Secondary Federal Total

500 <u>Other Purchased Services</u>				
595 IU Payments By Withholding				33,525.53
Total Other Purchased Services				\$33,525.53
Total 2910 Support Services Not Listed Elsewhere In the 2000 Series				\$33,525.53

LEA : 124154003 Kennett Consolidated SD

Printed 1/20/2023 2:18:55 PM

General Fund (10)

3000 Operation of Non-Instructional Services		<u>Total</u>
100 <u>Personnel Services – Salaries</u>		
100 Personnel Services – Salaries	778,749.02	
Total Personnel Services – Salaries		\$778,749.02
200 <u>Personnel Services – Employee Benefits</u>		
210 Group Insurance – Contracted Provider	1,050.96	
220 Social Security Contributions	59,703.00	
230 PSERS Retirement Contributions	257,815.54	
250 Unemployment Compensation	56.36	
260 Workers' Compensation	3,551.37	
Total Personnel Services – Employee Benefits		\$322,177.23
300 <u>Purchased Professional and Technical Services</u>		
330 Other Professional Services	114,980.00	
350 Security / Safety Services	2,545.00	
Total Purchased Professional and Technical Services		\$117,525.00
400 <u>Purchased Property Services</u>		
430 Repairs and Maintenance Services	56.25	
Total Purchased Property Services		\$56.25
500 <u>Other Purchased Services</u>		
510 Student Transportation Services	129,556.94	
520 Insurance – General	15,000.00	
580 Travel	10,244.58	
591 Services Purchased Locally	810.00	
Total Other Purchased Services		\$155,611.52
600 <u>Supplies</u>		
610 General Supplies	127,670.04	
640 Books and Periodicals	(8,032.00)	
Total Supplies		\$119,638.04
700 <u>Property</u>		
752 Capital Equipment – Original and Additional	30,255.73	
Total Property		\$30,255.73
800 <u>Other Objects</u>		
810 Dues and Fees	29,881.21	
890 Miscellaneous Expenditures	42,654.75	
Total Other Objects		\$72,535.96
Total 3000 Operation of Non-Instructional Services		\$1,596,548.75

LEA : 124154003 Kennett Consolidated SD

Printed 1/20/2023 2:18:55 PM

General Fund (10)				
3200 Student Activities				
	<u>Elementary</u>	<u>Secondary</u>	<u>Federal</u>	<u>Total</u>
100 <u>Personnel Services – Salaries</u>				
100 Personnel Services – Salaries				776,009.02
Total Personnel Services – Salaries				\$776,009.02
200 <u>Personnel Services – Employee Benefits</u>				
210 Group Insurance – Contracted Provider				1,050.96
220 Social Security Contributions				59,499.54
230 PSERS Retirement Contributions				256,858.13
250 Unemployment Compensation				56.36
260 Workers' Compensation				3,538.99
Total Personnel Services – Employee Benefits				\$321,003.98
300 <u>Purchased Professional and Technical Services</u>				
330 Other Professional Services				93,054.50
350 Security / Safety Services				2,545.00
Total Purchased Professional and Technical Services				\$95,599.50
400 <u>Purchased Property Services</u>				
430 Repairs and Maintenance Services				56.25
Total Purchased Property Services				\$56.25
500 <u>Other Purchased Services</u>				
510 Student Transportation Services				129,556.94
520 Insurance – General				15,000.00
580 Travel				10,244.58
591 Services Purchased Locally				810.00
Total Other Purchased Services				\$155,611.52
600 <u>Supplies</u>				
610 General Supplies				127,277.18
640 Books and Periodicals				(8,032.00)
Total Supplies				\$119,245.18
700 <u>Property</u>				
752 Capital Equipment – Original and Additional				30,255.73
Total Property				\$30,255.73
800 <u>Other Objects</u>				
810 Dues and Fees				29,881.21
890 Miscellaneous Expenditures				42,654.75
Total Other Objects				\$72,535.96
Total 3200 Student Activities				\$1,570,317.14

LEA : 124154003 Kennett Consolidated SD

Printed 1/20/2023 2:18:55 PM

General Fund (10)

3300 Community Services

	<u>Elementary</u>	<u>Secondary</u>	<u>Federal</u>	<u>Total</u>
100 <u>Personnel Services – Salaries</u>				
100 Personnel Services – Salaries			2,740.00	2,740.00
Total Personnel Services – Salaries			\$2,740.00	\$2,740.00
200 <u>Personnel Services – Employee Benefits</u>				
220 Social Security Contributions			203.46	203.46
230 PSERS Retirement Contributions			957.41	957.41
260 Workers’ Compensation			12.38	12.38
Total Personnel Services – Employee Benefits			\$1,173.25	\$1,173.25
300 <u>Purchased Professional and Technical Services</u>				
330 Other Professional Services			21,925.50	21,925.50
Total Purchased Professional and Technical Services			\$21,925.50	\$21,925.50
600 <u>Supplies</u>				
610 General Supplies			392.86	392.86
Total Supplies			\$392.86	\$392.86
Total 3300 Community Services			\$26,231.61	\$26,231.61

General Fund (10)

4000 Facilities Acquisition, Construction and Improvement Services	<u>Total</u>
400 <u>Purchased Property Services</u>	
430 Repairs and Maintenance Services	214,947.32
Total Purchased Property Services	\$214,947.32
Total 4000 Facilities Acquisition, Construction and Improvement Services	\$214,947.32

LEA : 124154003 Kennett Consolidated SD

Printed 1/20/2023 2:18:57 PM

General Fund (10)

4600 Existing Building Improvement Services	<u>Elementary</u>	<u>Secondary</u>	<u>Federal</u>	<u>Total</u>
400 <u>Purchased Property Services</u>				
430 Repairs and Maintenance Services				214,947.32
Total Purchased Property Services				\$214,947.32
Total 4600 Existing Building Improvement Services				\$214,947.32

LEA : 124154003 Kennett Consolidated SD

Printed 1/20/2023 2:19:00 PM

General Fund (10)	
5000 Other Expenditures and Financing Uses	<u>Total</u>
800 <u>Other Objects</u>	
830 Interest	989,827.30
Total Other Objects	\$989,827.30
900 <u>Other Uses of Funds</u>	
910 Redemption of Principal	6,572,868.00
932 Capital Reserve Fund Transfers Applicable To Fund 32	7,707,841.24
Total Other Uses of Funds	\$14,280,709.24
Total 5000 Other Expenditures and Financing Uses	\$15,270,536.54

LEA : 124154003 Kennett Consolidated SD

Printed 1/20/2023 2:19:00 PM

General Fund (10)

5100 Debt Service / Other Expenditures and Financing Uses	<u>Elementary</u>	<u>Secondary</u>	<u>Federal</u>	<u>Total</u>
800 <u>Other Objects</u>				
830 Interest				989,827.30
Total Other Objects				\$989,827.30
900 <u>Other Uses of Funds</u>				
910 Redemption of Principal				6,572,868.00
Total Other Uses of Funds				\$6,572,868.00
Total 5100 Debt Service / Other Expenditures and Financing Uses				\$7,562,695.30

LEA : 124154003 Kennett Consolidated SD

Printed 1/20/2023 2:19:00 PM

General Fund (10)				
5110 Debt Service	<u>Elementary</u>	<u>Secondary</u>	<u>Federal</u>	<u>Total</u>
800 <u>Other Objects</u>				
830 Interest				989,827.30
Total Other Objects				\$989,827.30
900 <u>Other Uses of Funds</u>				
910 Redemption of Principal				6,516,000.00
Total Other Uses of Funds				\$6,516,000.00
Total 5110 Debt Service				\$7,505,827.30

LEA : 124154003 Kennett Consolidated SD

Printed 1/20/2023 2:19:00 PM

General Fund (10)

5140 Leases	<u>Elementary</u>	<u>Secondary</u>	<u>Federal</u>	<u>Total</u>
900 <u>Other Uses of Funds</u>				
910 Redemption of Principal				56,868.00
Total Other Uses of Funds				\$56,868.00
Total 5140 Leases				\$56,868.00

LEA : 124154003 Kennett Consolidated SD

Printed 1/20/2023 2:19:00 PM

General Fund (10)

5200 Interfund Transfers – Out	<u>Elementary</u>	<u>Secondary</u>	<u>Federal</u>	<u>Total</u>
900 <u>Other Uses of Funds</u>				
932 Capital Reserve Fund Transfers Applicable To Fund 32				7,707,841.24
Total Other Uses of Funds				\$7,707,841.24
Total 5200 Interfund Transfers – Out				\$7,707,841.24

LEA : 124154003 Kennett Consolidated SD

Printed 1/20/2023 2:19:00 PM

General Fund (10)

5230 Capital Projects Fund Transfers	<u>Elementary</u>	<u>Secondary</u>	<u>Federal</u>	<u>Total</u>
900 <u>Other Uses of Funds</u>				
932 Capital Reserve Fund Transfers Applicable To Fund 32				7,707,841.24
Total Other Uses of Funds				\$7,707,841.24
Total 5230 Capital Projects Fund Transfers				\$7,707,841.24

LEA : 124154003 Kennett Consolidated SD

Printed 1/20/2023 2:18:59 PM

Capital Reserve Fund - § 1431 (32)

4000 Facilities Acquisition, Construction and Improvement Services

Total

300 Purchased Professional and Technical Services

330 Other Professional Services	630,240.30
---------------------------------	------------

Total Purchased Professional and Technical Services	\$630,240.30
--	---------------------

400 Purchased Property Services

430 Repairs and Maintenance Services	4,130,910.09
--------------------------------------	--------------

Total Purchased Property Services	\$4,130,910.09
--	-----------------------

700 Property

752 Capital Equipment – Original and Additional	136,219.09
---	------------

756 Capitalized Technology Equipment – Original	697,963.65
---	------------

766 Capitalized Technology Equipment – Replacement	25,839.50
--	-----------

Total Property	\$860,022.24
-----------------------	---------------------

Total 4000 Facilities Acquisition, Construction and Improvement Services	\$5,621,172.63
---	-----------------------

LEA : 124154003 Kennett Consolidated SD

Printed 1/20/2023 2:18:59 PM

Capital Reserve Fund - § 1431 (32)				
4400 Architecture and Engineering Services / Educational Specifications – Improvements	<u>Elementary</u>	<u>Secondary</u>	<u>Federal</u>	<u>Total</u>
300 <u>Purchased Professional and Technical Services</u>				
330 Other Professional Services				241,599.26
Total Purchased Professional and Technical Services				\$241,599.26
Total 4400 Architecture and Engineering Services / Educational Specifications – Improvements				\$241,599.26

LEA : 124154003 Kennett Consolidated SD

Printed 1/20/2023 2:18:59 PM

Capital Reserve Fund - § 1431 (32)

4600 Existing Building Improvement Services

Elementary Secondary Federal Total

300 Purchased Professional and Technical Services

330 Other Professional Services 388,641.04

Total Purchased Professional and Technical Services \$388,641.04

400 Purchased Property Services

430 Repairs and Maintenance Services 4,130,910.09

Total Purchased Property Services \$4,130,910.09

700 Property

752 Capital Equipment – Original and Additional 136,219.09

756 Capitalized Technology Equipment – Original 697,963.65

766 Capitalized Technology Equipment – Replacement 25,839.50

Total Property \$860,022.24

Total 4600 Existing Building Improvement Services \$5,379,573.37

LEA : 124154003 Kennett Consolidated SD

Printed 1/20/2023 2:19:03 PM

	<u>General Fund(10)</u>	<u>Student Sponsored Activity Fund(21)</u>	<u>Public Purpose Trust(27)</u>	<u>Other Compt Approved (28)</u>	<u>Athletic / Activity(29)</u>
1000 <u>Instruction</u>					
1100 Regular Programs - Elementary / Secondary	35,799,487.34				
1200 Special Programs - Elementary / Secondary	11,770,433.94				
1300 Vocational Education	1,961,970.18				
1400 Other Instructional Programs - Elementary / Secondary	487,920.27				
1500 Nonpublic School Programs	3,632.00				
Total Instruction	\$50,023,443.73				
2000 <u>Support Services</u>					
2100 Support Services - Students	3,611,282.88				
2200 Support Services - Instructional Staff	3,255,746.93				
2300 Support Services - Administration	4,857,673.61				
2400 Support Services - Pupil Health	1,050,943.81				
2500 Support Services - Business	1,186,293.86				
2600 Operation and Maintenance of Plant Services	7,294,226.69				
2700 Student Transportation Services	4,937,750.99				
2800 Support Services - Central	2,925,791.29				
2900 Other Support Services	33,525.53				
Total Support Services	\$29,153,235.59				
3000 <u>Operation of Non-Instructional Services</u>					
3200 Student Activities	1,570,317.14				
3300 Community Services	26,231.61				
Total Operation of Non-Instructional Services	\$1,596,548.75				
4000 <u>Facilities Acquisition, Construction and Improvement Services</u>					
4400 Architecture and Engineering Services / Educational Specifications - Improvements					
4600 Existing Building Improvement Services	214,947.32				
Total Facilities Acquisition, Construction and Improvement Services	\$214,947.32				
5000 <u>Other Expenditures and Financing Uses</u>					
5100 Debt Service / Other Expenditures and Financing Uses	7,562,695.30				
5200 Interfund Transfers - Out	7,707,841.24				
Total Other Expenditures and Financing Uses	\$15,270,536.54				
TOTAL ACTUAL EXPENDITURES & OTHER FINANCING USES	\$96,258,711.93				

	<u>Capital Reserve (690.1850)(31)</u>	<u>Capital Reserve (1431)(32)</u>	<u>Other Capital Projects Fund(39)</u>	<u>Debt Service(40)</u>	<u>Permanent(90)</u>
1000 <u>Instruction</u>					
1100 Regular Programs - Elementary / Secondary					
1200 Special Programs - Elementary / Secondary					
1300 Vocational Education					
1400 Other Instructional Programs - Elementary / Secondary					
1500 Nonpublic School Programs					
Total Instruction					
2000 <u>Support Services</u>					
2100 Support Services - Students					
2200 Support Services - Instructional Staff					
2300 Support Services - Administration					
2400 Support Services - Pupil Health					
2500 Support Services - Business					
2600 Operation and Maintenance of Plant Services					
2700 Student Transportation Services					
2800 Support Services - Central					
2900 Other Support Services					
Total Support Services					
3000 <u>Operation of Non-Instructional Services</u>					
3200 Student Activities					
3300 Community Services					
Total Operation of Non-Instructional Services					
4000 <u>Facilities Acquisition, Construction and Improvement Services</u>					
4400 Architecture and Engineering Services / Educational Specifications - Improvements		241,599.26			
4600 Existing Building Improvement Services		5,379,573.37			
Total Facilities Acquisition, Construction and Improvement Services		\$5,621,172.63			
5000 <u>Other Expenditures and Financing Uses</u>					
5100 Debt Service / Other Expenditures and Financing Uses					
5200 Interfund Transfers - Out					
Total Other Expenditures and Financing Uses					
TOTAL ACTUAL EXPENDITURES & OTHER FINANCING USES		\$5,621,172.63			

LEA : 124154003 Kennett Consolidated SD

Printed 1/20/2023 2:19:03 PM

	<u>Total</u>
1000 <u>Instruction</u>	
1100 Regular Programs - Elementary / Secondary	35,799,487.34
1200 Special Programs - Elementary / Secondary	11,770,433.94
1300 Vocational Education	1,961,970.18
1400 Other Instructional Programs - Elementary / Secondary	487,920.27
1500 Nonpublic School Programs	3,632.00
Total Instruction	\$50,023,443.73
2000 <u>Support Services</u>	
2100 Support Services - Students	3,611,282.88
2200 Support Services - Instructional Staff	3,255,746.93
2300 Support Services - Administration	4,857,673.61
2400 Support Services - Pupil Health	1,050,943.81
2500 Support Services - Business	1,186,293.86
2600 Operation and Maintenance of Plant Services	7,294,226.69
2700 Student Transportation Services	4,937,750.99
2800 Support Services - Central	2,925,791.29
2900 Other Support Services	33,525.53
Total Support Services	\$29,153,235.59
3000 <u>Operation of Non-Instructional Services</u>	
3200 Student Activities	1,570,317.14
3300 Community Services	26,231.61
Total Operation of Non-Instructional Services	\$1,596,548.75
4000 <u>Facilities Acquisition, Construction and Improvement Services</u>	
4400 Architecture and Engineering Services / Educational Specifications - Improvements	241,599.26
4600 Existing Building Improvement Services	5,594,520.69
Total Facilities Acquisition, Construction and Improvement Services	\$5,836,119.95
5000 <u>Other Expenditures and Financing Uses</u>	
5100 Debt Service / Other Expenditures and Financing Uses	7,562,695.30
5200 Interfund Transfers - Out	7,707,841.24
Total Other Expenditures and Financing Uses	\$15,270,536.54
TOTAL ACTUAL EXPENDITURES & OTHER FINANCING USES	\$101,879,884.56

LEA : 124154003 Kennett Consolidated SD

Printed 1/20/2023 2:19:12 PM

PSERS Salary Data (Salary Data should relate to the General Fund only)

Amount	Description	Amount
	Total Salary Base for salaries subject to PSERS withholding	32,880,261.45
	Total Federally Funded salaries subject to PSERS withholding	1,033,400.55

Title I Expenditure Data

Amount	Description	Amount
	Expenditures Funded with Current Title I Funds	694,692.79
	Expenditures Funded with Carry over Title I Funds	8,400.05
Total	Title I Expenditure Data	\$703,092.84

Title IV Revenue Data

Amount	Description	Amount
	Revenue from Title IV-A-1: Student Support and Academic Enrichment Grants	54,851.96
	Revenue from Title IV-B: 21st Century Community Learning Centers	

Title V Revenue Data

Amount	Description	Amount
	Revenue from Title V-B-2: Rural and Low-Income School Programs	
	Revenue from Title V-B-1: Small Rural School Achievement (Directly from the Federal Govt)	

1 . <u>Current Special Education Expenditures within Function 1000.\r\nSee list of exclusions in the note below.</u>	6,894,802.20
2 . <u>Current Special Education Expenditures within Function 2000.\r\nSee list of exclusions in the note below.</u>	4,947,917.44
3 . <u>Current Special Education Expenditures within Sub-Function 2100.\r\nThis data should also be included in line 2 above.\r\nSee list of exclusions in the note below.</u>	1,035,870.08
4 . <u>Current Special Education Expenditures within Sub-Function 2200.\r\nThis data should also be included in line 2 above.\r\nSee list of exclusions in the note below.</u>	440,865.34
5 . <u>Current Special Education Expenditures within Sub-Function 2700.\r\nThis data should also be included in line 2 above.\r\nSee list of exclusions in the note below.</u>	1,181,863.51
6 . <u>Current Special Education Expenditures within Sub-Function 3100.\r\nSee list of exclusions in the note below.</u>	236,504.70
7 . <u>Current Special Education Expenditures within Sub-Function 3200.\r\nSee list of exclusions in the note below.</u>	48,947.50

Note: The Current Special Education Expenditure amounts for each line should be calculated as follows:

- * Include the total expenditures for special education costs from all funds for the function/sub-function requested
- * Exclude data from sub-functions: 1243,1450,1500,1600,1807,2280,2450,2750,2990
- * Exclude data from objects: 322,511,512,516,561,562,564,566,592,593,594,595,596,597,700,830,899

Benefits for Staff Relative to Collective Bargaining Agreements

	OBJECT	COVERED	NOT COVERED	TOTAL
10 General Fund				
	211 Medical Insurance			
	212 Dental Insurance			
	215 Eye Care Insurance	58,705.30	20,540.39	79,245.69
	216 Prescription Insurance			
	271 Self-Insurance Medical Benefits	3,657,382.06	1,279,681.13	4,937,063.19
	272 Self-Insurance Dental Benefits	325,652.83	113,942.65	439,595.48
	275 Self-Insurance Eye Care Benefits			
	276 Self-Insurance Prescription Benefits	1,126,295.12	394,079.31	1,520,374.43
	FUND TOTAL	\$5,168,035.31	\$1,808,243.48	\$6,976,278.79
50 Enterprise Fund				
	211 Medical Insurance			
	212 Dental Insurance			
	215 Eye Care Insurance		574.80	574.80
	216 Prescription Insurance			
	271 Self-Insurance Medical Benefits		37,584.48	37,584.48
	272 Self-Insurance Dental Benefits		3,061.08	3,061.08
	275 Self-Insurance Eye Care Benefits			
	276 Self-Insurance Prescription Benefits		9,369.60	9,369.60
	FUND TOTAL		\$50,589.96	\$50,589.96
60 Internal Service Fund	No Self Insurance data to report			
	211 Medical Insurance			
	212 Dental Insurance			
	215 Eye Care Insurance			
	216 Prescription Insurance			
	271 Self-Insurance Medical Benefits			
	272 Self-Insurance Dental Benefits			
	275 Self-Insurance Eye Care Benefits			
	276 Self-Insurance Prescription Benefits			
	FUND TOTAL			
Total of All Funds		\$5,168,035.31	\$1,858,833.44	\$7,026,868.75

LEA : 124154003 Kennett Consolidated SD

Printed 1/20/2023 2:19:19 PM

Function	Special Education (Prior Year)	Nonspecial Education (Prior Year)	Total (Prior Year)	Special Education (Current Year)	Nonspecial Education (Current Year)	Total (Current Year)
2120 Guidance Services	205,956.23	1,383,583.11	1,589,539.34	263,293.33	1,679,106.72	1,942,400.05
2140 Psychological Services	486,854.66	162,284.89	649,139.55	736,610.34	245,536.78	982,147.12
2150 Speech Pathology and Audiology Services						
2160 Social Work Services	23,642.62	158,827.59	182,470.21	27,278.07	173,961.07	201,239.14
2260 Instruction and Curriculum Development Services	217,620.20	1,461,939.93	1,679,560.13	208,720.55	1,331,078.46	1,539,799.01
2350 Legal and Accounting Services	225.00	189,773.74	189,998.74	225.00	109,804.44	110,029.44
2420 Medical Services	632.07	4,246.18	4,878.25	1,036.17	6,607.97	7,644.14
2440 Nursing Services	126,042.35	846,733.60	972,775.95	139,259.06	888,100.04	1,027,359.10
2700 Student Transportation Services	1,443,956.77	3,035,224.98	4,479,181.75	1,591,786.04	3,345,964.95	4,937,750.99
Total	\$2,504,929.90	\$7,242,614.02	\$9,747,543.92	\$2,968,208.56	\$7,780,160.43	\$10,748,368.99

LEA : 124154003 Kennett Consolidated SD

	(PRINCIPAL AMOUNTS ONLY)							
<u>GOVERNMENTAL FUNDS/ ACTIVITIES</u>	Short-Term Borrowing	General Obligation Bonds/Notes	Authority Building Obligations	OLTD, Ext Term Fin, Leases	Other Post- Employment Benefits (OPEB)	Compensated Absences	Net Pension Liability	Total
1. Debt at Beginning of Fiscal Year		31,785,000.00		180,409.00	18,513,000.00	1,188,494.00	109,436,580.00	161,103,483.00
2. Additional Debt Incurred During Year								
3. Retirements and Repayments		6,516,000.00		56,868.00	853,380.00	98,454.00	18,186,300.00	25,711,002.00
4. Debt at End of Fiscal Year		25,269,000.00		123,541.00	17,659,620.00	1,090,040.00	91,250,280.00	135,392,481.00
5. Accreted Interest at End Of Fiscal Year								
6. Total Debt and Accreted Interest		25,269,000.00		123,541.00	17,659,620.00	1,090,040.00	91,250,280.00	135,392,481.00
7. Current Portion P&I - Due within 1 year		7,505,301.00		60,076.00		73,869.00		7,639,246.00
8. Interest Paid during current fiscal year		989,827.30						989,827.30

(PRINCIPAL AMOUNTS ONLY)								
<u>PROPRIETARY FUNDS</u>	Short-Term Borrowing	General Obligation Bonds/Notes	Authority Building Obligations	OLTD, Ext Term Fin, Leases	Other Post- Employment Benefits (OPEB)	Compensated Absences	Net Pension Liability	Total
1. Debt at Beginning of Fiscal Year					187,000.00	17,878.00	1,105,420.00	1,310,298.00
2. Additional Debt Incurred During Year								
3. Retirements and Repayments					8,620.00	3,430.00	183,700.00	195,750.00
4. Debt at End of Fiscal Year					178,380.00	14,448.00	921,720.00	1,114,548.00
5. Accreted Interest at End Of Fiscal Year								
6. Total Debt and Accreted Interest					178,380.00	14,448.00	921,720.00	1,114,548.00
7. Current Portion P&I - Due within 1 year								
8. Interest Paid during current fiscal year								

LEA : 124154003 Kennett Consolidated SD

Total Principal and Interest Payments Made by Your School - All Funds

Function	Fund		Principal (910)	Principal (920)	Interest (830)	Total (Principal +Interest)	Misc Other Uses (990)
5110	10	General Fund	6,516,000.00		989,827.30	7,505,827.30	
5110	20	Special Revenue Funds					
5110	30	Capital Projects Funds					
5110	40	Debt Service Fund					
5110	90	Permanent Fund					
5120	10	General Fund					
5120	20	Special Revenue Funds					
5120	30	Capital Projects Funds					
5120	40	Debt Service Fund					
5140	10	General Fund	56,868.00			56,868.00	
5140	20	Special Revenue Funds					
5140	30	Capital Projects Funds					
5140	40	Debt Service Fund					
5140	90	Permanent Fund					
Total Debt Payments - Governmental Funds			\$6,572,868.00		\$989,827.30	\$7,562,695.30	

Function	Fund		Principal (910)	Principal (920)	Interest (830)	Total (Principal +Interest)
5110	50	Enterprise Fund				
5110	60	Internal Service Fund				
5120	50	Enterprise Fund				
5120	60	Internal Service Fund				
5140	50	Enterprise Fund				
5140	60	Internal Service Fund				
Total Debt Payments - Proprietary Funds						

LEA : 124154003 Kennett Consolidated SD

Printed 1/20/2023 2:19:22 PM

Debt Details
Governmental Funds/ Activities

Debt Category	Debt Issue Date (MM/YYYY)	Principal Amounts Only				Current Portion Due Within One Year (Principal and Interest)	Interest Paid During Fiscal Year
		Debt at Beginning of Fiscal Year	Additions	Reductions / Repayments	Debt at End of Fiscal Year		
General Obligation Bonds/Notes – CIB	11/2020	8,315,000.00		1,256,000.00	7,059,000.00	1,268,168.00	79,944.80
General Obligation Bonds/Notes – CIB	11/2018	13,305,000.00		4,830,000.00	8,475,000.00	5,383,075.00	498,275.00
General Obligation Bonds/Notes – CIB	05/2018	3,320,000.00		425,000.00	2,895,000.00	547,575.00	109,262.50
General Obligation Bonds/Notes – CIB	05/2018	6,845,000.00		5,000.00	6,840,000.00	306,483.00	302,345.00
Compensated Absences		1,188,494.00		98,454.00	1,090,040.00	73,869.00	
Other Post-Employment Benefits (OPEB)		18,513,000.00		853,380.00	17,659,620.00		
Net Pension Liability		109,436,580.00		18,186,300.00	91,250,280.00		
Leases		180,409.00		56,868.00	123,541.00	60,076.00	
Totals for Debt Entered:		\$161,103,483.00		\$25,711,002.00	\$135,392,481.00	\$7,639,246.00	\$989,827.30

Bond Details
Proprietary Funds

Debt Category	Debt Issue Date (MM/YYYY)	Principal Amounts Only				Current Portion Due Within One Year (Principal and Interest)	Interest Paid During Fiscal Year
		Debt at Beginning of Fiscal Year	Additions	Reductions / Repayments	Debt at End of Fiscal Year		
Compensated Absences		17,878.00		3,430.00	14,448.00		
Other Post-Employment Benefits (OPEB)		187,000.00		8,620.00	178,380.00		
Net Pension Liability		1,105,420.00		183,700.00	921,720.00		
Totals for Debt Entered:		\$1,310,298.00		\$195,750.00	\$1,114,548.00		

LEA : 124154003 Kennett Consolidated SD

General Fund (10)

Section 1: Tuition/Purchased Services as Reported within Expenditure Detail	Amount
Tuition Reported in General Fund Expenditures 1000-560	5,665,413.52
Purchased Services in General Fund Expenditures 1000-594 and 1000-597	
Section 1 Total	\$5,665,413.52

Section 2: Tuition Paid to Institution Types During Fiscal Year	Tuition Paid For Nonspecial Education	Tuition Paid For Special Education	Total
1 1306 Institutions			
2 Institutionalized Children's Programs			
3 Juveniles Incarcerated in Adult Facilities			
4 Residential Treatment Facilities			
5 Other Local Education Agencies	140,996.32	10,647.58	151,643.90
6 Brick and Mortar Charter Schools	1,432,887.65	741,688.37	2,174,576.02
7 Cyber Charter Schools	538,880.77	304,820.77	843,701.54
8 Career and Technology Centers	1,961,970.18		1,961,970.18
9 Approved Private Schools		85,381.88	85,381.88
10 PA Chartered Schools for the Deaf and Blind			
11 Private Residential Rehabilitative Institutions			
12 Juvenile Detention Centers			
13 Special Program Jointures			
14 Other Tuition Not Included Elsewhere In This Section	4,050.00	444,090.00	448,140.00
Section 2 Total	\$4,078,784.92	\$1,586,628.60	\$5,665,413.52

LEA : 124154003 Kennett Consolidated SD

Printed 1/20/2023 2:19:27 PM

Food Service / Cafeteria Operations Fund (51)

3000 Operation of Non-Instructional Services

Total

100	<u>Personnel Services – Salaries</u>	
100	Personnel Services – Salaries	208,267.73
Total Personnel Services – Salaries		\$208,267.73
200	<u>Personnel Services – Employee Benefits</u>	
210	Group Insurance – Contracted Provider	961.24
220	Social Security Contributions	15,129.90
230	PSERS Retirement Contributions	20,576.79
260	Workers' Compensation	963.25
270	Group Insurance – Self-Insurance	50,016.82
Total Personnel Services – Employee Benefits		\$87,648.00
500	<u>Other Purchased Services</u>	
570	Food Service Management	1,679,549.00
Total Other Purchased Services		\$1,679,549.00
600	<u>Supplies</u>	
610	General Supplies	9,296.53
650	Supplies & Fees – Technology Related	8,760.00
Total Supplies		\$18,056.53
700	<u>Property</u>	
740	Depreciation	36,942.15
Total Property		\$36,942.15
Total 3000 Operation of Non-Instructional Services		\$2,030,463.41

LEA : 124154003 Kennett Consolidated SD

Printed 1/20/2023 2:19:27 PM

Food Service / Cafeteria Operations Fund (51)

3100 Food Services	<u>Elementary</u>	<u>Secondary</u>	<u>Federal</u>	<u>Total</u>
100 <u>Personnel Services – Salaries</u>				
100 Personnel Services – Salaries				208,267.73
Total Personnel Services – Salaries				\$208,267.73
200 <u>Personnel Services – Employee Benefits</u>				
210 Group Insurance – Contracted Provider				961.24
220 Social Security Contributions				15,129.90
230 PSERS Retirement Contributions				20,576.79
260 Workers' Compensation				963.25
270 Group Insurance – Self-Insurance				50,016.82
Total Personnel Services – Employee Benefits				\$87,648.00
500 <u>Other Purchased Services</u>				
570 Food Service Management				1,679,549.00
Total Other Purchased Services				\$1,679,549.00
600 <u>Supplies</u>				
610 General Supplies				9,296.53
650 Supplies & Fees – Technology Related				8,760.00
Total Supplies				\$18,056.53
700 <u>Property</u>				
740 Depreciation				36,942.15
Total Property				\$36,942.15
Total 3100 Food Services				\$2,030,463.41

LEA : 124154003 Kennett Consolidated SD

Printed 1/20/2023 2:19:26 PM

Internal Service Fund (60)

2000 Support Services

Total

200 <u>Personnel Services – Employee Benefits</u>	
270 Group Insurance – Self-Insurance	8,520,428.00
Total Personnel Services – Employee Benefits	\$8,520,428.00
Total 2000 Support Services	\$8,520,428.00

LEA : 124154003 Kennett Consolidated SD

Printed 1/20/2023 2:19:26 PM

Internal Service Fund (60)				
2500 Support Services – Business	<u>Elementary</u>	<u>Secondary</u>	<u>Federal</u>	<u>Total</u>
200 <u>Personnel Services – Employee Benefits</u>				
270 Group Insurance – Self-Insurance				8,520,428.00
Total Personnel Services – Employee Benefits				\$8,520,428.00
Total 2500 Support Services – Business				\$8,520,428.00

LEA : 124154003 Kennett Consolidated SD

Printed 1/20/2023 2:19:26 PM

Internal Service Fund (60)				
2520 Purchasing Services	<u>Elementary</u>	<u>Secondary</u>	<u>Federal</u>	<u>Total</u>
200 <u>Personnel Services – Employee Benefits</u>				
270 Group Insurance – Self-Insurance				8,520,428.00
Total Personnel Services – Employee Benefits				\$8,520,428.00
Total 2520 Purchasing Services				\$8,520,428.00

	<u>Food Service(51)</u>	<u>Child Care Operations(52)</u>	<u>Other Enterprise(58)</u>	<u>Internal Service(60)</u>	<u>Total</u>
2000 <u>Support Services</u>					
2500 Support Services - Business				8,520,428.00	8,520,428.00
Total Support Services				\$8,520,428.00	\$8,520,428.00
3000 <u>Operation of Non-Instructional Services</u>					
3100 Food Services	2,030,463.41				2,030,463.41
Total Operation of Non-Instructional Services	\$2,030,463.41				\$2,030,463.41
TOTAL ACTUAL EXPENDITURES & OTHER FINANCING USES	\$2,030,463.41			\$8,520,428.00	\$10,550,891.41

LEA : 124154003 Kennett Consolidated SD

Printed 1/20/2023 2:19:36 PM

Fund	School	School Number	Local Personnel	Local Nonpersonnel	State Personnel	State Nonpersonnel	Federal Personnel	Federal Nonpersonnel	Total	Explanation
10										
	Bancroft El Sch	8172	4,514,481.56	1,230,019.26	1,129,179.62	307,657.18	202,314.54	119,671.12	7,503,323.28	
	Greenwood El Sch	1401	5,898,560.71	1,262,677.47	1,475,370.86	315,825.78	276,535.20	169,667.95	9,398,637.97	
	Kennett HS	6482	13,198,833.75	3,484,538.35	3,301,343.44	871,566.23	389,601.58	371,061.91	21,616,945.26	
	Kennett MS	6834	11,248,236.25	2,093,753.39	2,813,452.43	523,697.71	352,833.30	280,238.80	17,312,211.88	
	Mary D Lang Kdg Ctr	8171	2,816,781.27	963,452.05	704,544.25	240,982.36	129,402.93	80,756.23	4,935,919.09	
	New Garden El Sch	1400	5,209,395.29	1,373,218.36	1,302,994.13	343,474.70	252,543.94	149,403.29	8,631,029.71	
Total			42,886,288.83	10,407,658.88	10,726,884.73	2,603,203.96	1,603,231.49	1,170,799.30	69,398,067.19	