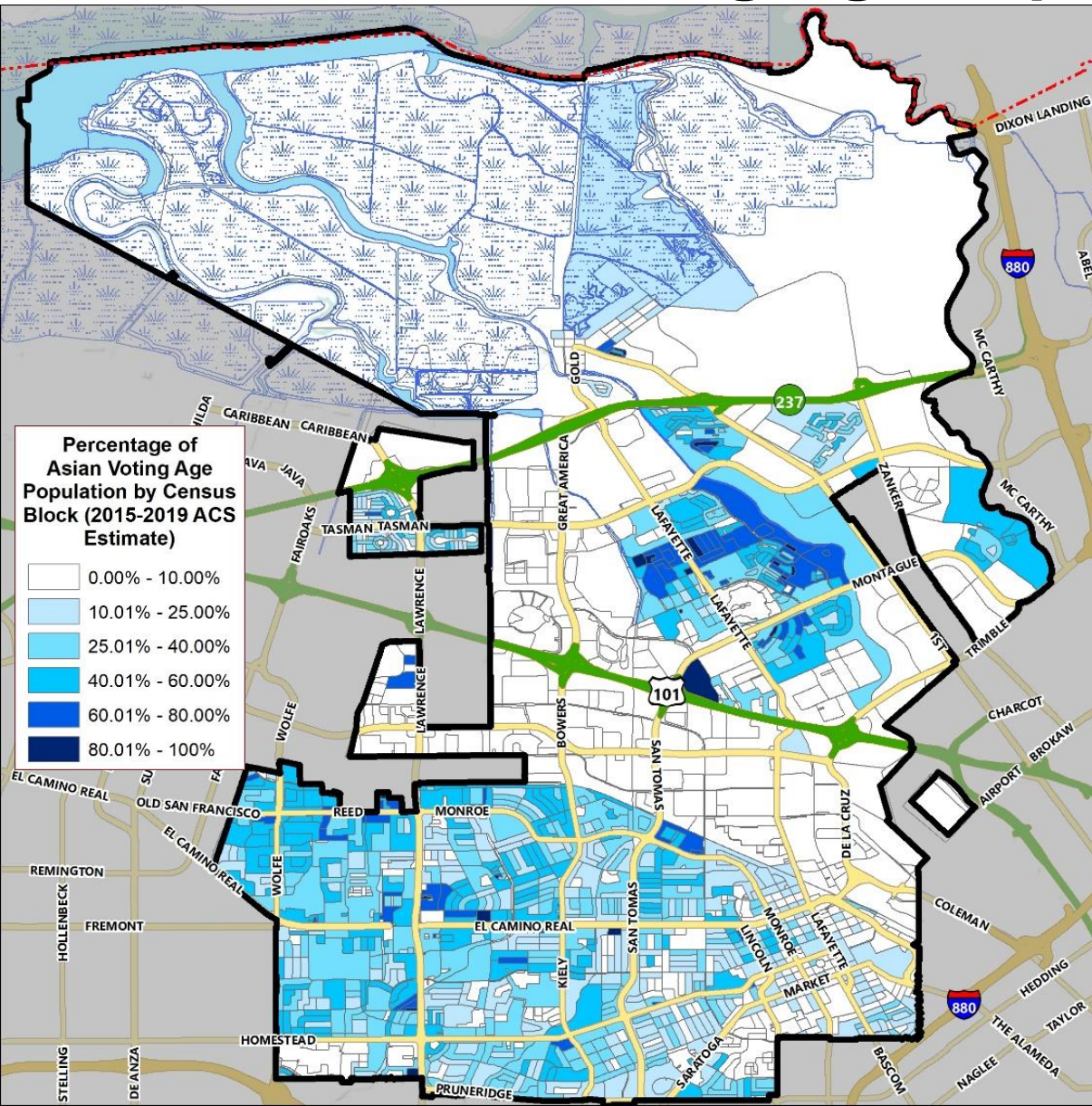


District's Demographics

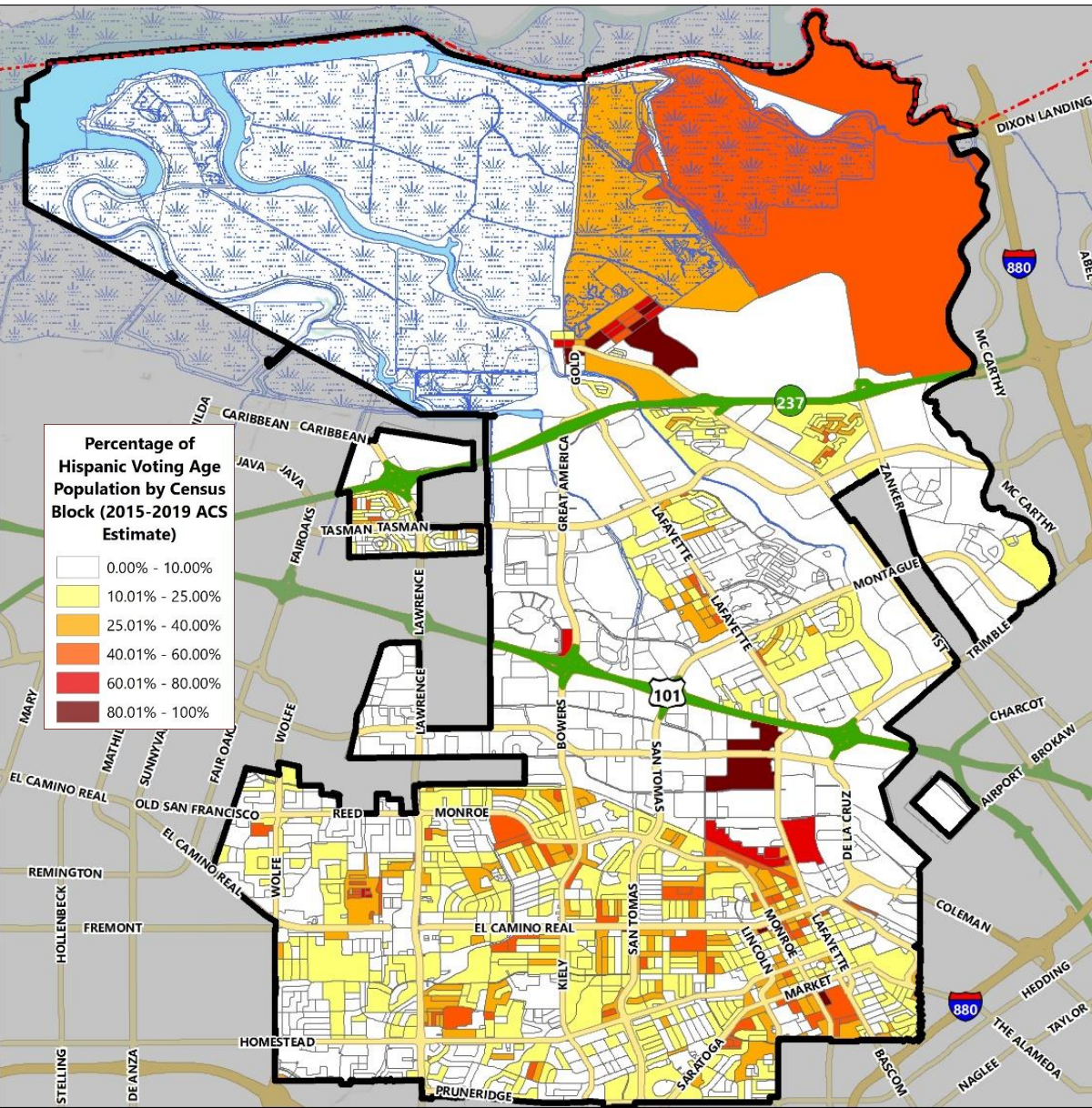
Asian Citizen Voting Age Population Estimates



Population	2015-2019 CVAP	
	Total	%
Hispanic/Latino	15,753	16.57%
White	40,679	42.79%
Black / African American	3,443	3.62%
American Indian / Alaska Native	70	0.07%
Asian	31,378	33.01%
Native Hawaiian/ Pacific Islander	555	0.58%
Two or More Races	3,180	3.35%
Total	95,058	100%

District's Demographics

Hispanic Citizen Voting Age Population Estimates



Population	2015-2019 CVAP	
	Total	%
Hispanic/Latino	15,753	16.57%
White	40,679	42.79%
Black / African American	3,443	3.62%
American Indian / Alaska Native	70	0.07%
Asian	31,378	33.01%
Native Hawaiian/ Pacific Islander	555	0.58%
Two or More Races	3,180	3.35%
Total	95,058	100%