

Sparr

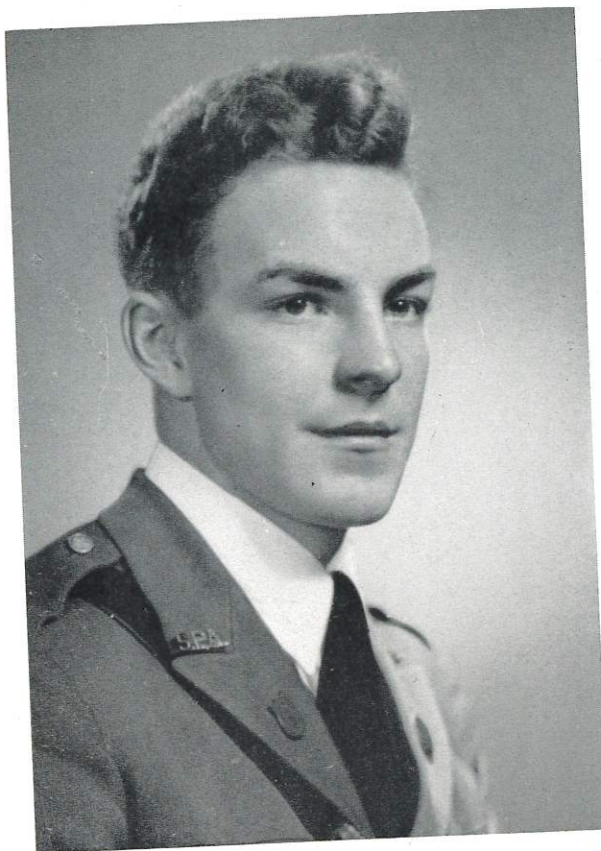
1948



SENIORS

Page fourteen



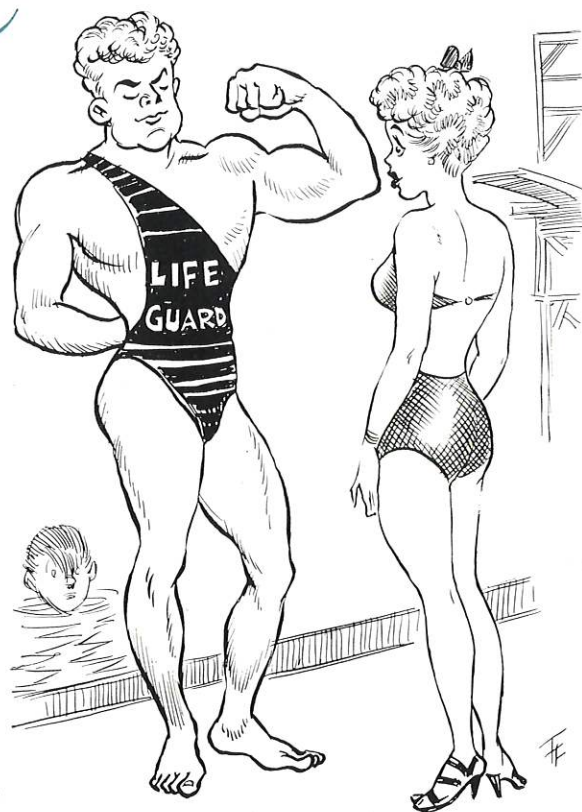


DONALD GRAY BUEHLER

First Football Team
First Baseball Team
First Hockey Team
Drum and Bugle Corps
Color Guard
Dramatic Club
Glee Club
Prize Speaking
Stage Force
Staff Sergeant in Military

Donald G. Buehler

"Tennessee Jed" or "Texas Boo" are the names generally applied to Don Buehler. Don entered the class in the third form when he arrived from those "old hills." Always laughing, Don is one of the gayer members of the class. He is always extremely entertaining with his tall stories which are the delight of the other seniors. He is also one of the musical members of the class, being a member of the Glee Club as leader of the tenor section, being in the Drum and Bugle Corps, and having tried various expeditions into the field of band-leading. He has had numerous bands with varying ranges of success. At oratory he possesses one of the best speaking voices in class. His orations at Prize speaking are always of the very best calibre. On the athletic field, he is a very efficient pitcher, a nimble wing and speedy half-back. Always jovial and obliging, Don is one of those fellows who always makes you feel good when you are "down in the dumps".



PATRICK BUTLER JR.

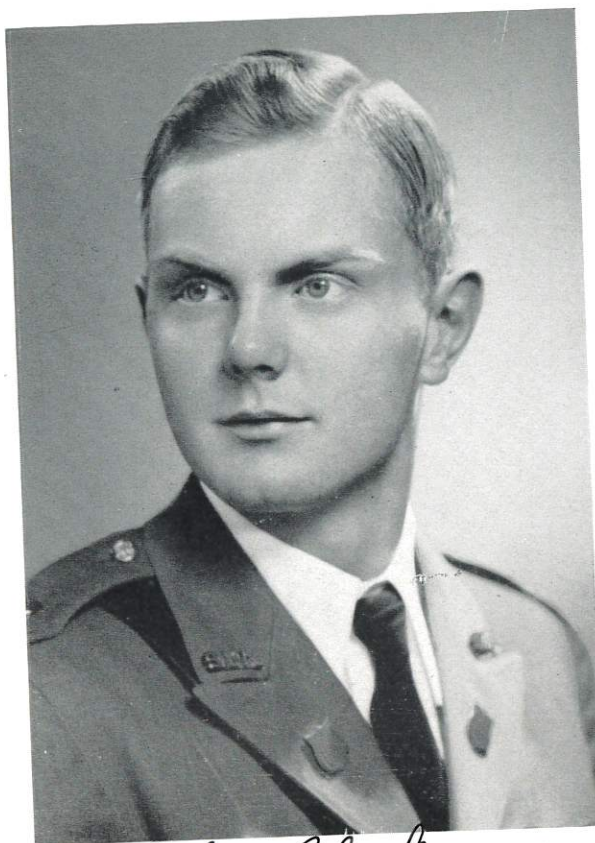
Glee Club
First Sergeant in Military
Managerial Staff
Second Team Football
Drum and Bugle Corps
Dramatic Club



Pat Butler Jr.



One of the more industrious boys in the graduating class is Pat Butler. Always extremely diligent in everything that he does. Pat heads the class for the unusual trait of working hard. His main interests lie in his devotion to his father's business, mainly that of iron ore mining. Pat also has had quite a bit of business experience working with that renowned industrialist Benjamin Minnich. Pat served in the capacity of vice-president in the dubious concern of the Twin Cities Utility and Publishing Co. So if there ever is need of an expert radio man, telephone repair man, or an expert on iron ore, Pat is your man. At school Pat's main interests have centered around Physics and Mathematics. He has served competently on the managerial staff, where the behind-the-scenes men are so important. However the chief interest supplied by Pat is his terrific, dynamic appetite. At lunch he generally consumes a great deal more than any one table. In general, Pat's undying devotion to his occupational hobbies make him one of the most promising seniors.



ROBERT OTTIS CLARK

First Football Team
First Hockey Team
Crack Squad
Manual of Arms Team
Bob Carley Award
Captain in Military
Glee Club
Now and Then Staff
Adv. Manager of SPAR
Student Council
Stage Force

Bob Clark

As one would walk through the halls of the school, one would surely see an unshaven face bordered by a crop of flaming red hair. This is Buubbbby, otherwise known as Bob Clark. However one thing about Bob is one of the unexplainable feats of the century. Leaving his home at 8:41, he picks up one passenger at 8:42, another at 8:42½, two more at 8:43, returns home for some forgotten item at 8:44, and enters the school grounds at 8:45, whereupon the passengers of said miraculous car enter the study hall just in time for opening exercises. Aside from this Bob's interests lie in his speedy sail boat which is his pride and joy, and from all reports, Tom Dosdall's chief competition is on White Bear Lake. In school, having been a member of the Crack Squad, he was made captain of Co. "B". He has also been a key figure on the first football and hockey squads.

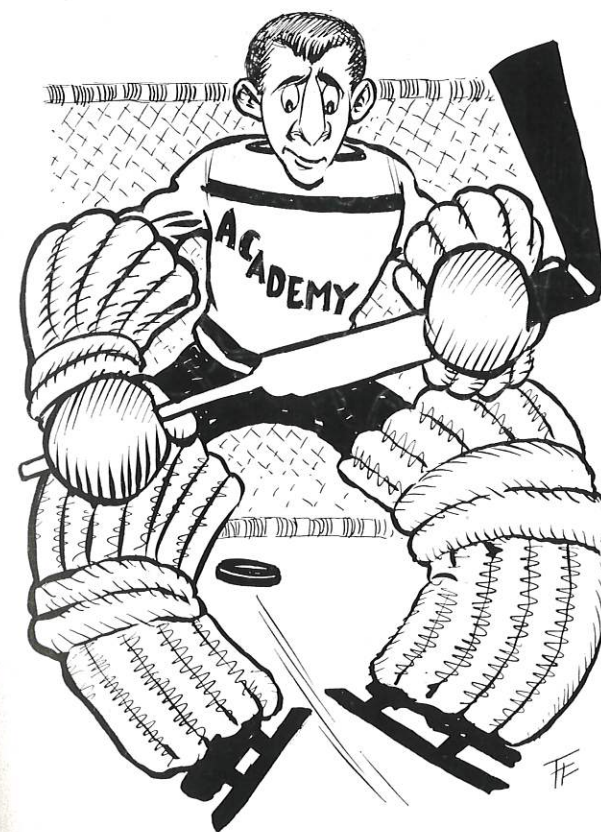
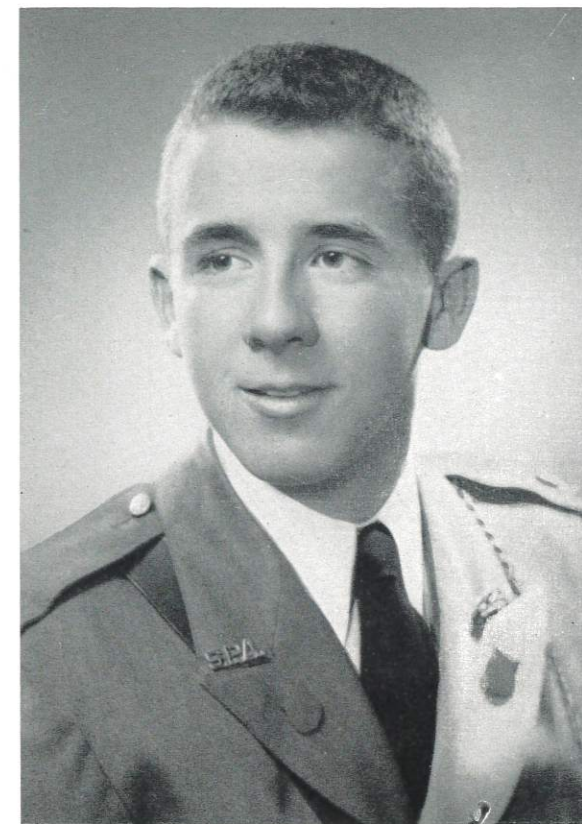
Bob has always been one of the main attractions of the class, and his thriving personality plus splendid companionship make him one never to be forgotten.



THEODORE COOK

First Football Team
Captain, Hockey Team
First Baseball Team
First Lieutenant in Military
Drum and Bugle Corps
Student Council
Stage Force
Sports Editor of SPAR
Sports Editor of Now and Then

Teedy Cook



In every senior class there is one boy who qualifies for honors both athletically and scholastically. In this year's class it is Ted Cook. Teedy has attained prominence in athletics by being the captain of the hockey team, and a member of the baseball and football teams, while in school studies he has been a consistent class representative on the honor list. He is also in charge of the Drum and Bugle Corps. But perhaps the finest thing about Teedy are his attributive qualities. He is one of the more assertive boys in class, and his quick wit, smart thinking, and rabid personality have made him one of the class favorites. The characteristic or aspect of his life that stands out most however is his ability at athletics. He was one of the first members of the class to earn a school letter "A". This was at hockey, where he is most exceptional. In baseball his wicked curve balls and whizzing fast balls make him hard for the opposing batters to cope with. And in football, his direct, cautious centers helped the team through one of its bad years. Altogether, Teedy can be classified as a typical boy of the graduating class of 1948.

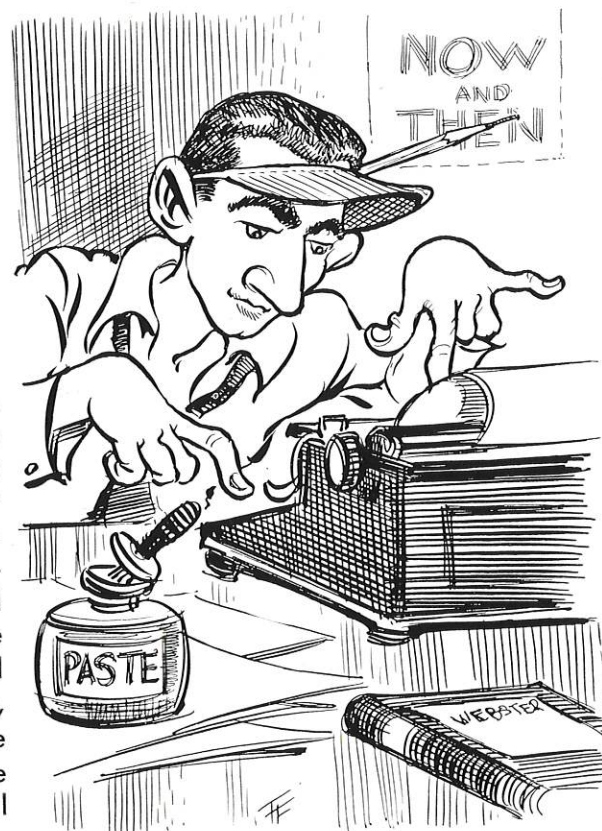


THOMAS EDWARD DOSDALL

First Football Team
First Baseball Team
Captain Intramural Basketball
Captain in Military
Commander, Crack Squad
Manual of Arms Team
Bob Carley Award
Student Council
Head of Class, three years
Editor of Now and Then

Tom Dosdall

If there is anyone in the senior class to be pitied, it is Tom Dosdall. After all what could be worse than to hold the distinction of possessing the highest average in the class and what could be more greivous than being exempted from every exam. Outside of this, Tom can be seen, summers, whizzing hrough the waters of White Bear Lake, racing his "C" boat, against Bob Clark. His auspicious commanding of the Crack Squad for two years, previously having won the Carley award, made him truly a "big wheel" in the Academy military department, while his talented playing on the football, baseball and basketball team has been the pride of the school. His blazing editorship of the Now and Then brought it one of its most exciting years, and on top of all this, Tom is Secretary of the Student Council. All in all a commendable performance, and one which the class will never forget.

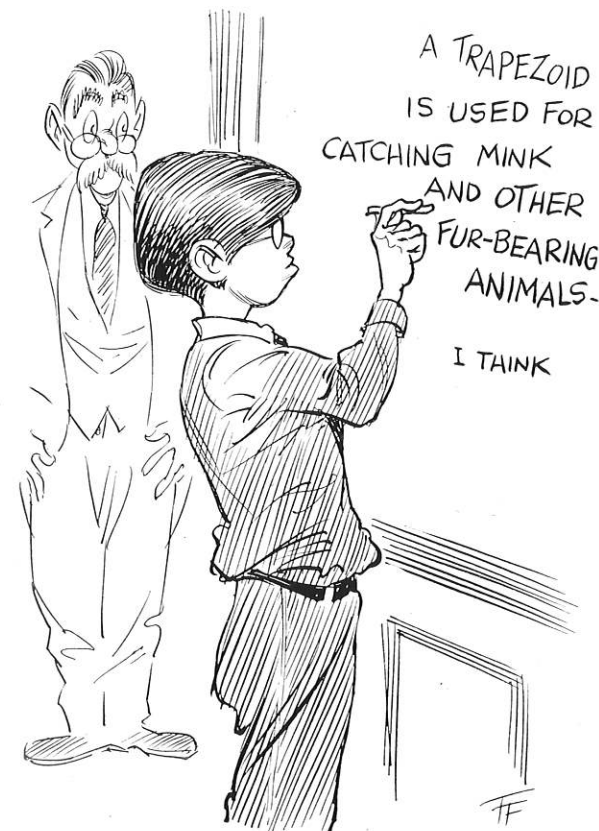


JOHN RICHARD ELSINGER

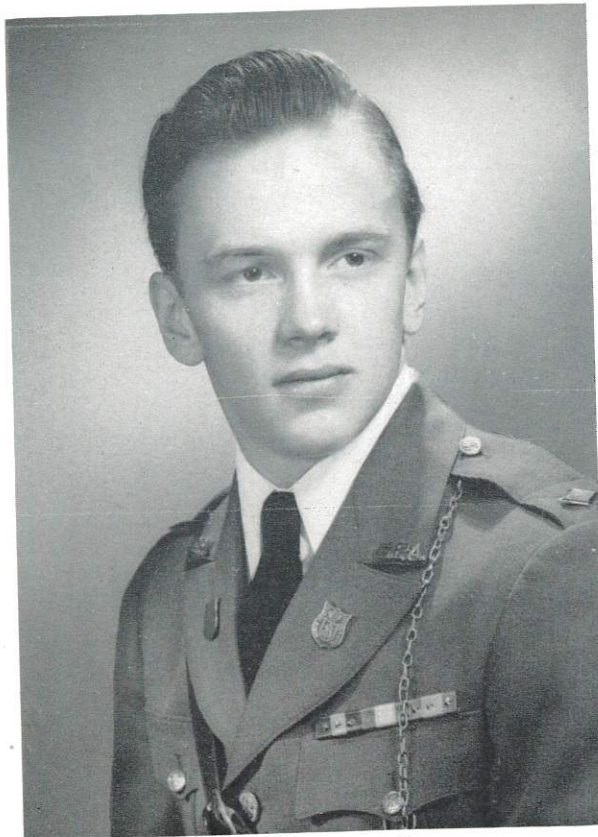
Drum and Bugle Corps
Managerial Staff
Glee Club
Dramatic Club
Stage Force
First Sergeant in Military
Time Test Winner



John E. lsinger



"The perfect gentleman in the senior class is John Elsinger." This is the reasoning of Miss Powers and Miss Lewis. After working together for some time to annihilate the ever-present scowl from John's face and replace it with a smile, our two congenial office workers report that John is a "perfect gentleman." Whether or not he has lost his scowl and replaced it with a smile, we do not know. We are not sure if this is a regular feature of the office staff or if John is just too happy about being admitted to Colgate. John has long been one of our best actors and stagehands. He has also been a drummer and a three striper. But he is best known as the first boy up from lunch, and on to the Dean Room bench. On almost everything he does, John is a hard worker, and his two expressions that of joy or ire, do not necessarily denote a two-face.

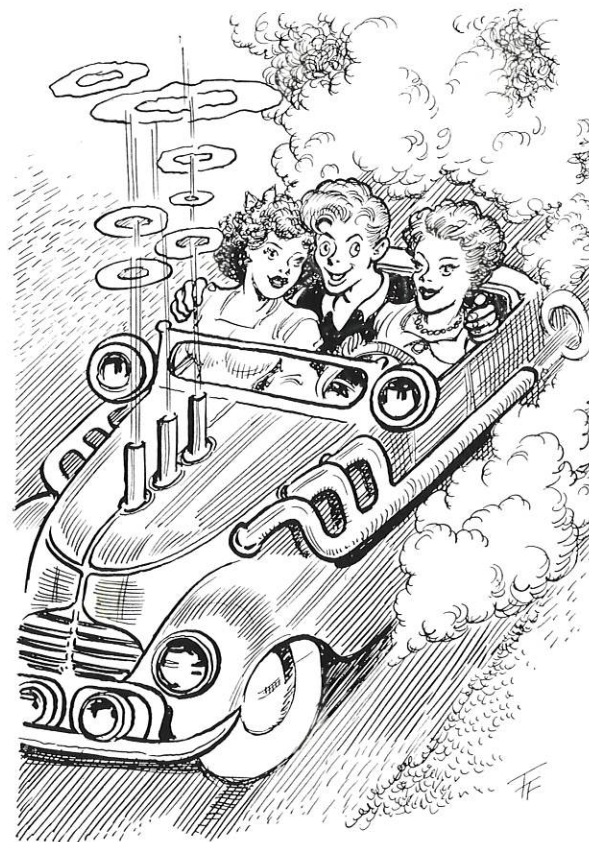


ROBERT BRUCE FARNHAM

First Football Team
First Hockey Team
First Baseball Team
President of Student Council
Major in Military
Commander of Junior Crack Squad
Associate Editor of SPAR
Photographer of Now and Then and SPAR

Bob Farnham

When a boy, during the course of his school life, attains the honor of being both President of the Student Council and Major in the military, it is easy to see that this boy is one of the class leaders. For this boy is Bob Farnham. Bob is one of the eight boys who has been with the class ever since the first grade, he has proven himself over and over again to be one of the ablest, most proficient, and friendliest boys in the class. In addition to the other two honors, Bob has shown excellence in sports as a center in hockey, the quarterback in football, and a fielder in baseball. He is also quite handy with a camera, and this knack has made him the photographer of both the SPAR and the Now and Then. His life has also been marked by a beautiful red Ford convertible which is on exhibition daily in the school parking lot. As a sideline the car is handsomely engraved with Bob's initials and equipped with a none-to-quiet horn. As a member of the graduating class, Bob has shown the characteristics that tend to make him one of its most shining assets.

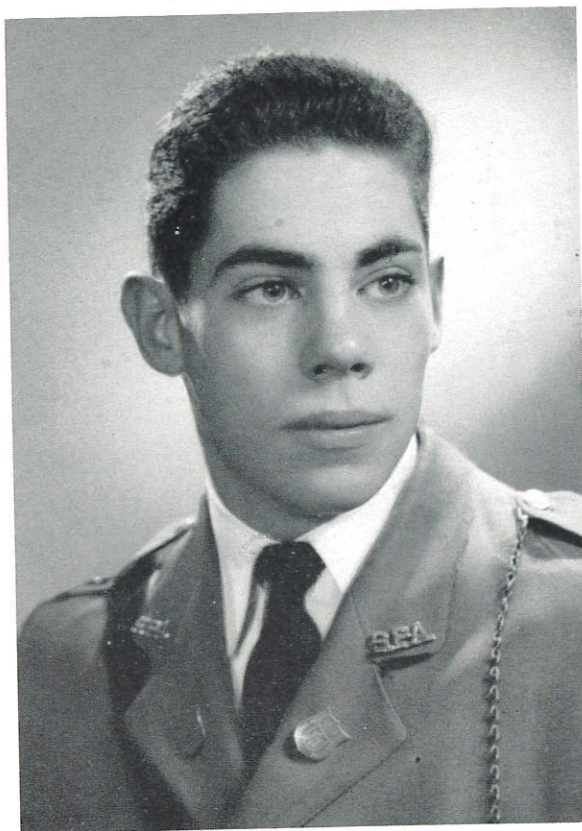


JOHN LOUIS FIELD

Tennis Team
Head of Stage Force
Dramatic Club
Glee Club
Stringer Cup for Elocution
Smith Cup for Elocution
Editor of SPAR
Associate Editor of Now and Then
Second Lieutenant in Military
First Hockey Manager
French Medal



Never let anyone tell you that this year's senior class is not blessed with another Mark Hellenger. We have John Field. John, possibly due to heredity, just kind of took to the theatre naturally. At school, he is an actor in the Dramatic Club, architect of the stage settings and scenery, and general manager of the stage force. He also has won two cups in prize speaking. Besides this John is quite proficient in writing. As Editor-In-Chief of the SPAR, he is responsible for the production of this yearbook. He is also a very competent feature writer for the Now and Then where he is Associate Editor. Athletically, Kiddo, as he is affectionately nicknamed, is the school's champ tennis player. He plays during spring season, and is Mr. Blanpied's right-hand-man. John will always be remembered by this year's senior class for his very well-rounded and amiable character.

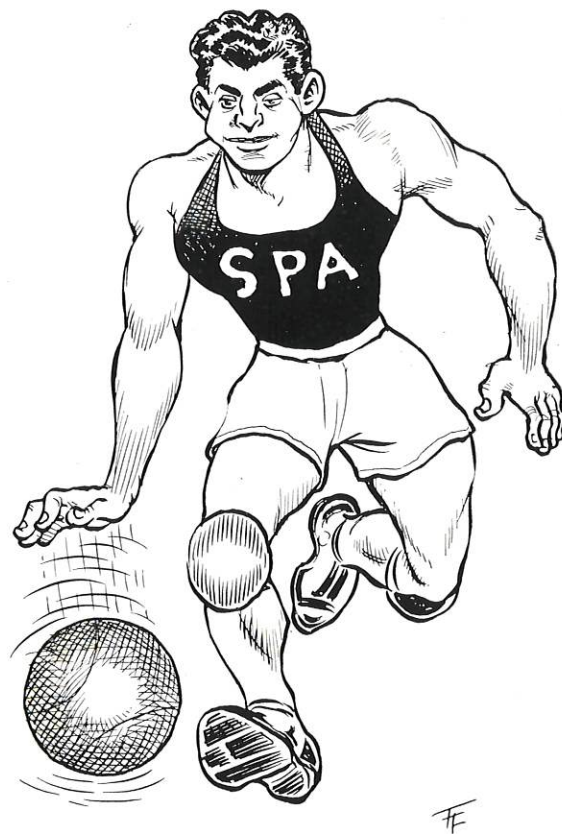


RICHARD ALLAN GRAYSON

Football Team
 Captain, Intramural Basketball
 Student Council
 Now and Then Staff
 Second Lieutenant in Military
 Stage Force
 Glee Club
 Drum and Bugle Corps
 Rifle Team

Dick Grayson

"The Blackman Strikes," "Look at the man in the monkey mask." Who else could this be but Dick Grayson. Dick, the lady killer of the class, for truly he adds up to this name judging from his friendly excursions into the realms of Young Maidenhood, has given to the senior class one of the keenest wits and friendliest personalities that we have seen in a long time. Always looking at the cheery side of things, he is one of the best liked boys in class. Distinguishing himself on the football field, with his swift running, Dick is also a Lieutenant in Co. "B" and a member of the Glee Club. Being a member of the student council, he exhibits certain leadership qualities which enable him to be respected by the whole student body. Throughout his school life, Dick has proven himself to be a very able boy both scholastically and athletically; his is an extremely fine addition to the senior class.



DONALD HARRIS

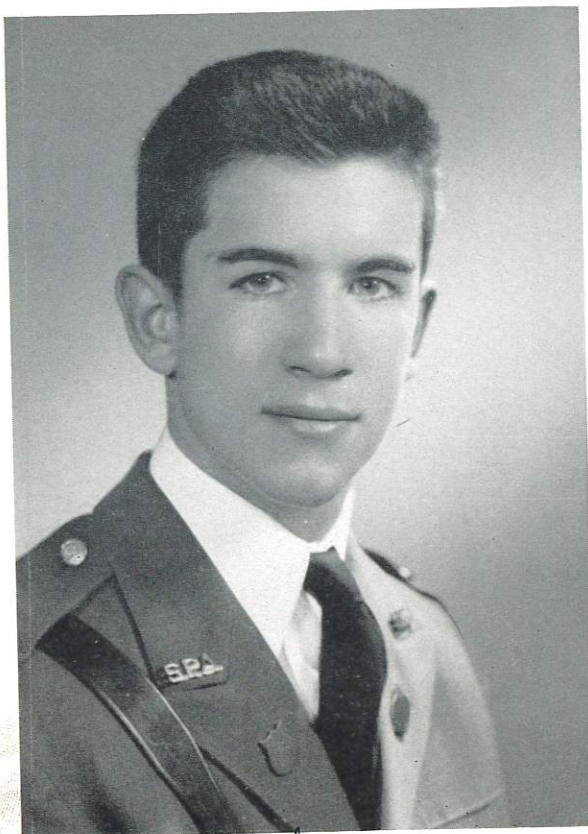
Drum and Bugle Corps
 Glee Club
 Second Lieutenant in Military
 Time Test Winner
 Second Football Team
 Second Hockey Team
 Managerial Staff
 Associate Editor of Now and Then
 Editor of SPAR



Don Harris

Don Harris, ambulatory criticaster, fatter-medalion pundit of gyrations Terpsichorean, excoriates all polysyllabic gastronomes except himself. This all goes to prove he has possibly one of the largest vocabularies of any boy in school. Mr. Hunter reads all Don's tests keeping Webster's big dictionary handy in case he should come across one of Don's more complicated sentences. Don is both Associate Editor of the Now and Then and of the SPAR. The "Beak" is his Nome de Plume in the Now and Then as he writes his record column. Here he really comes into his own because records have long been his favorite hobby. He has the largest collection in the school, and possibly one of the largest in the city. The collection ranges from "Claire de Lune" to Spike Jones' "Temptation." His musical knowledge is responsible for his being second in command of the Drum and Bugle Corps. Don is the chief arranger and manages to make a good deal out of nothing. In Don's own words, he is testudinarious, irascibility, inchoate, when obfuscated by any contrapuntal polyphonics but his own.





FREDERICK KARL KOCH

First Football Team
First Hockey Team
Captain Baseball Team
Now and Then
Sports Editor of Spar
Crack Squad
First Lieutenant in Military
Glee Club

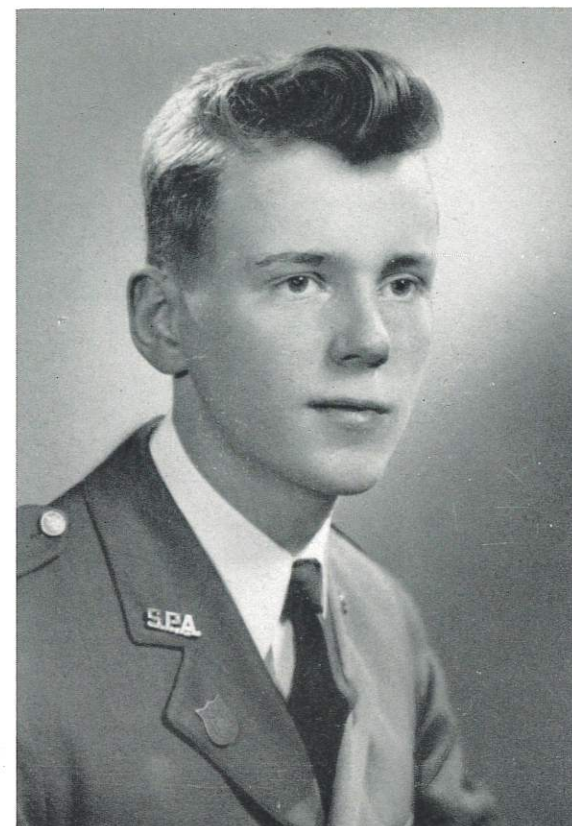
Fred Koch

Fred Koch is another one of the coveted class athletes. He is captain of the baseball team, and as a member of the hockey team, Fred proves to be a very dangerous man at his left wing position. But added to this, Fred is also one of the first undergraduates in school to become a coach. For Fred along with his assistant, Mr. Hunter, pulled the "C" football team through a victorious season. This feat has also earned him an amazing English grade, but of course the two have no relation to each other. Fred is also a sports editor for the SPAR. Though his main interests lay along the athletic field, he has also done what can be termed amazing. Most boys generally have around the same averages throughout their high school life, but Fred boosted his average way up, and by doing this he won the Williams Cup for greatest improvement during a school year. Fred possesses these dogged qualities of determination and forcefulness in almost everything he does, and for this aspect alone, he is one of the finest in this year's graduating class.



JOHN HANTHORNE MATSON

Color Guard
Intramural Basketball
Second Football Team
Dramatic Club



John Matson

It can be said of John Matson that he started with the class, finished with the class, but was nowhere to be seen in between. John left the class in the second form, heading for western parts and after living in such states as Utah and Nebraska, John returned to graduate with the class. However, this year marks John's second high school graduation, since he actually graduated last year from a different school. But John, maybe because of his fondness for SPA life, or maybe because of aspirations for an Eastern University, returned to rejoin his class. Not too active in class activities, on account of his absence, John proves to be, however, a mighty force on the basketball court and a staunch scholar in the Physics Lab. His entertaining open house after the Christmas Dance is one of those events that will never be forgotten. His tall lanky frame topped by an everlasting smile on his face and a glossy gleam in his eyes, provides a formidable appearance in the Dean Room and other senior haunts.





George Millard

GEORGE BENZ MILLARD

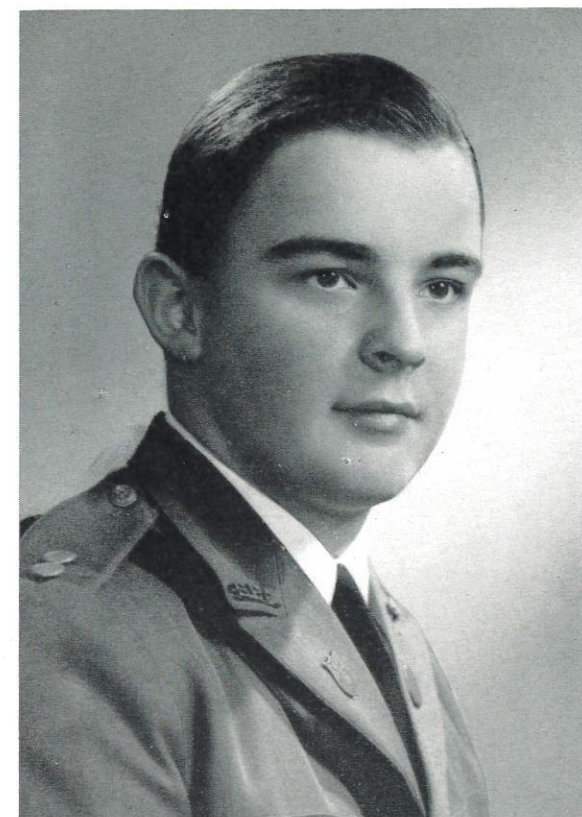
Glee Club
Rifle Team
Drum and Bugle Corps
Prize Speaking
Second Football Team
First Hockey Team
Managerial Staff
Staff Sergeant in Military

Very few senior classes are lucky enough to have a boy like George Millard. He is the perfect jester. If there is something funny to be said, George will say it. In his twelve years at the Academy, every teacher he has had will remember his wonderful sense of humor. At the Junior School George used to come to class and delight all of our perverted senses of humor with fascinating stories about how he tied his kittens' tails together and dropped them down the clotheschute. As George grew up, so did his jokes. In school activities George has been a member of the Glee Club, Rifle Squad, Drum and Bugle Corps, and the first Hockey team. He was a feature writer on the SPAR, and his fine handling of the various class articles is one of the highspots of the book. All in all, George is the fellow who is always there to pep you up, but who does it in all seriousness.



SAMUEL BROWN SCHALLER

Glee Club
Intramural Basketball
First Team Football
First Lieutenant in Military
Business Manager of SPAR
French Medal
Color Guard
Best Dressed Cadet



Sam Schaller



In every senior class there is always one boy who "hangs around" the office. Sam Shaller fills this role ably. It was greatly wondered why Sam did this. The reason is that he admires the neatness and sammyness of the office staff (from whence he receives his inspiration), and he also hopes to get a glimpse at his marks beforehand. Sammy has always been the neatest boy in school. He was the best dressed cadet (100%) in 1947 and '48. His desk is by far the tidiest in the study hall. His uniform is immaculate, and there is never a hair out of place on his head. Outside of this, Sammy has been a member of the first team in football, a first lieutenant in military, and a baritone in the Glee Club. When you read the Advertising section, and think of all the bills that the SPAR has to pay, you can give Sam the credit, for the necessary bookkeeping, since he is the business-manager. One of the larger boys in class for spirit as well as stature, Sam provides a real asset to the class.



CHARLES SPENCER STRYKER

Captain Football Team
First Hockey Team
Student Council
Dramatic Club
Crack Squad
Asst. Adv. Mgr. of SPAR
Now and Then Staff

Charles Stryker

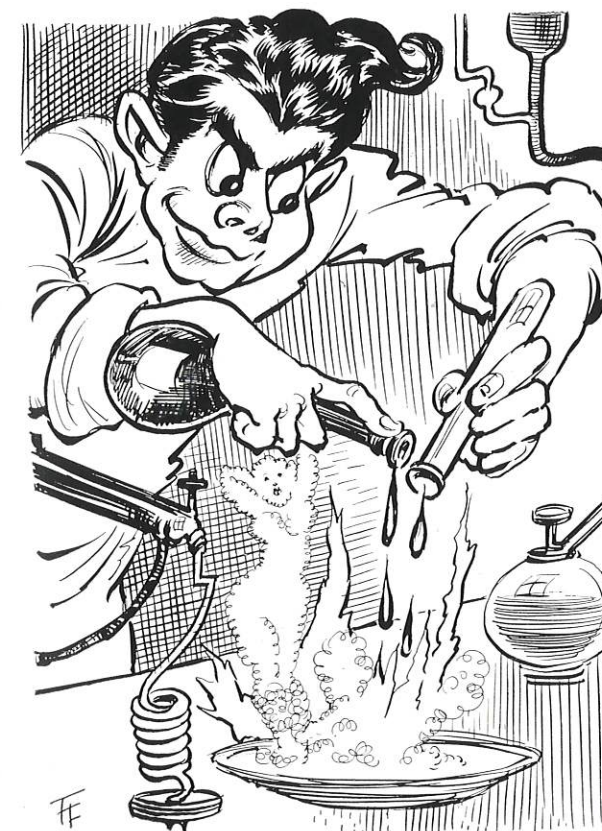
Whenever you see a prep former shudder, he is seeing, hearing, or thinking about that big tough senior Charlie Stryker. Fortunately Charlie saves his strong man tactics for his sports activities. He has been an important member of all the teams including the captaincy of the football team. In playing any game Charlie has such drive and initiative that he appears to be twice his size and three times as ferocious. It is this quality that has given all our varsity teams an advantage over their opponents, which is sometimes taken and sometimes not. All this leads the smaller boys to shudder at his sight. It ought to be said now that Charlie is gentle as a big rough lamb when he isn't playing for the glory of good old SPA.

Besides his sports activities, Charlie has always been outstanding in the military department, and this year he is commander of Co. A. Charlie's amiable traits and his outstanding athletic leadership serve to place him at the top of the list in this year's senior class.



CARL LOUIS WESCHCKE

Glee Club
First Lieutenant in Military
Managerial Staff
First Team Hockey
Second Team Football
Now and Then



"Does anyone want to buy a 1908, nine-passenger car for \$700?" This is one of the questions with which Carl Weschcke greets everyone. The other question is "Who wants to sell their car for \$50?" As you have guessed Carl is interested in old cars. He is particularly fond of large noisy ones, but model T's or electric cars will do. After Carl has managed to purchase another sample of primeval machinery and to sell his present means of conveyance, he is very pleased if his net deficit is less than \$10. The only car we have yet to see him drive is a 1948 model.

When Carl is not busy with his old car trade-in service, he has many affairs to take care of in school. For several years he was Sergeants Boyke's Sergeant Friday. In this capacity he kept the military books, and made out the military "D" list. This year he was promoted to a first Lt. and Battalion Adj.