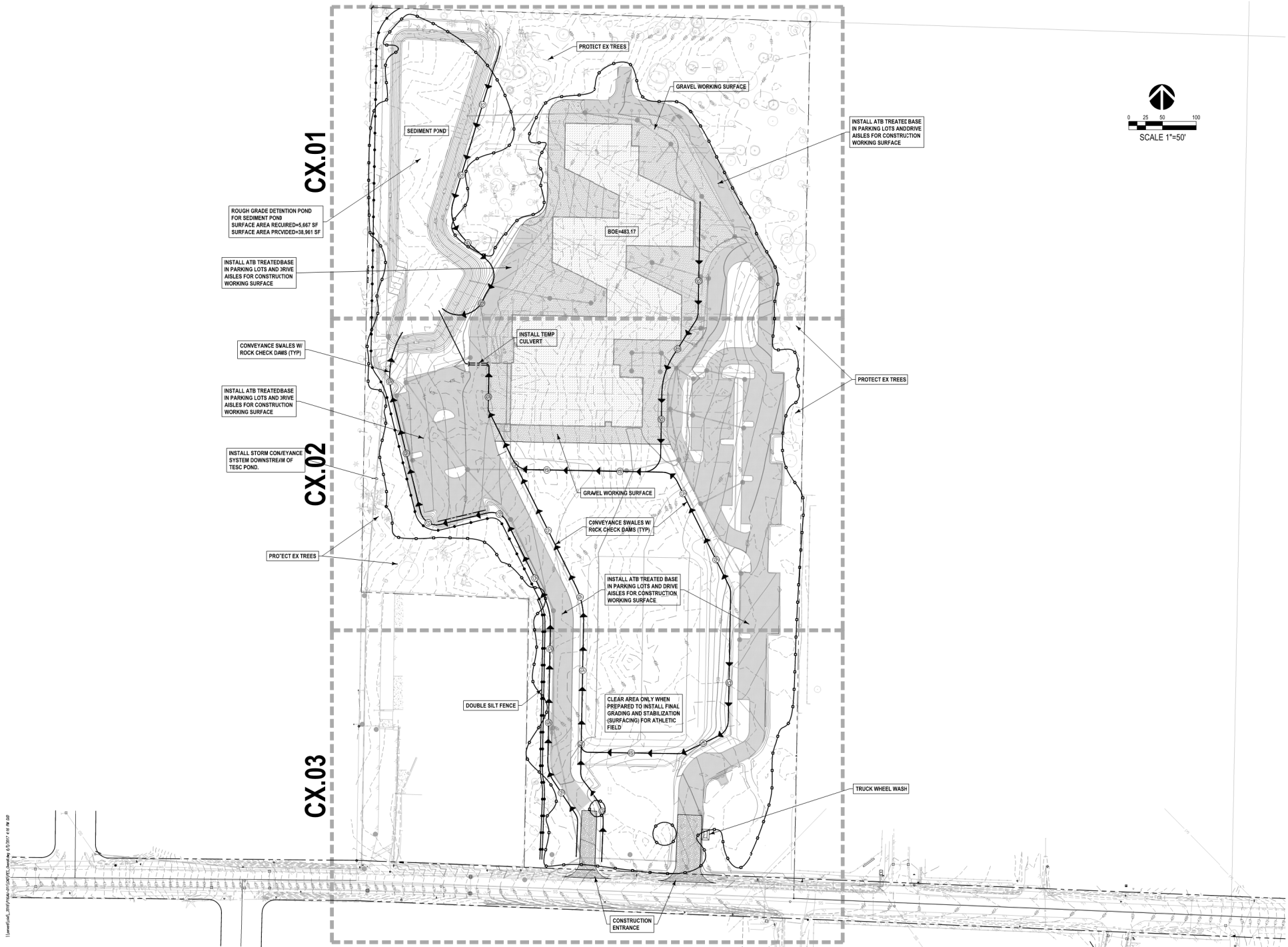


\\server01\cadd\17171\17171.dwg 06/07/2017 4:18 PM RJD



ROUGH GRADE DETENTION POND FOR SEDIMENT POND
SURFACE AREA REQUIRED=5,667 SF
SURFACE AREA PROVIDED=39,961 SF

INSTALL ATB TREATED BASE IN PARKING LOTS AND DRIVE AISLES FOR CONSTRUCTION WORKING SURFACE

CONVEYANCE SWALES W/ ROCK CHECK DAMS (TYP)

INSTALL ATB TREATED BASE IN PARKING LOTS AND DRIVE AISLES FOR CONSTRUCTION WORKING SURFACE

INSTALL STORM CONVEYANCE SYSTEM DOWNSTREAM OF TESC POND.

CX.01

CX.02

CX.03

SEDIMENT POND

PROTECT EX TREES

GRAVEL WORKING SURFACE

INSTALL ATB TREATED BASE IN PARKING LOTS AND DRIVE AISLES FOR CONSTRUCTION WORKING SURFACE

BOE-443.17

INSTALL TEMP CULVERT

PROTECT EX TREES

GRAVEL WORKING SURFACE

CONVEYANCE SWALES W/ ROCK CHECK DAMS (TYP)

INSTALL ATB TREATED BASE IN PARKING LOTS AND DRIVE AISLES FOR CONSTRUCTION WORKING SURFACE

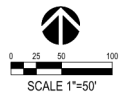
PROTECT EX TREES

CLEAR AREA ONLY WHEN PREPARED TO INSTALL FINAL GRADING AND STABILIZATION (SURFACING) FOR ATHLETIC FIELD

DOUBLE SILT FENCE

TRUCK WHEEL WASH

CONSTRUCTION ENTRANCE



REVISIONS

DD REVIEW / ESTIMATE SET

COUGHLIN/PORTER LUNDEN
STRUCTURAL CIVIL SEISMIC ENGINEERING
10000 14TH AVENUE, SUITE 100
DENVER, COLORADO 80202

POWELL SCHOOL DISTRICT
NEW SOUTHWEST ELEMENTARY SCHOOL
3911 144TH STREET EAST



NAC ARCHITECTURE
INCORPORATED 1988
300 WEST MAIN STREET, SUITE 300
DENVER, CO 80202
P.303.441.4022

SP. NO. C160030-05
DRAWN: DJD
CHECKED: KMK
DATE: 06-07-2017

OVERALL TEMPORARY EROSION CONTROL PLAN

C
2.00