



## Budget Overview for Parents (BOP)

## Local Control Funding Formula (LCFF)

---

Temple City Unified School District



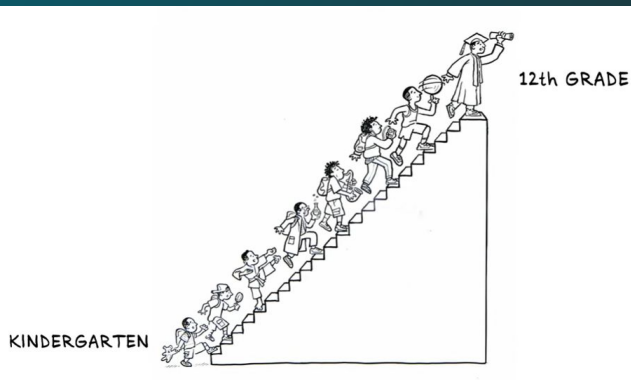
# Local Control Funding Formula (LCFF)

LCFF simplified the state of California funding for Local Educational Agencies (LEAs) and is based on specific considerations:

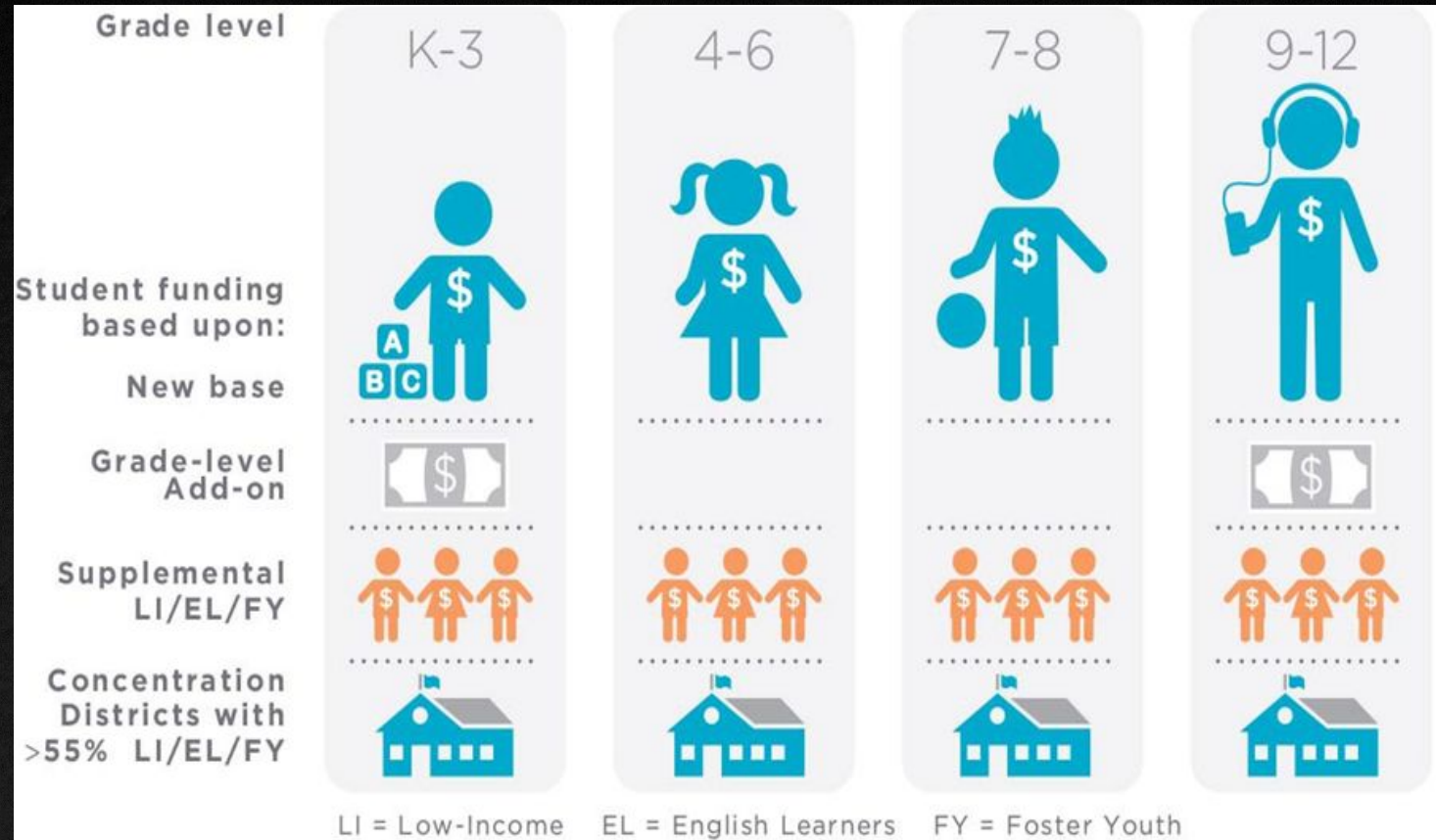
- ✓ Equity, LCFF works to address funding inequities across the state of California through three main sources of funding Base, Supplemental, and Concentration
- ✓ LEAs receive funds for Unduplicated Students which are students with greater educational needs, defined as:
  - Low-income Socio-economic disadvantaged students
  - English Learners
  - Foster Youth
- ✓ Local decision-making and partnership involvement
- ✓ Accountability
- ✓ Transparency
- ✓ Alignment of budgeting with accountability plans



# Local Control Funding Formula (LCFF)



**Base Funding:**  
Under the state of California's Local Control Funding Formula, the District receives base funding on a per-student funding level.



# Local Control Funding Formula (LCFF)

## Base Grant

**Base Funding:**  
Under the state of California's Local Control Funding Formula, the District receives base funding on a per-student funding level.



## Supplemental Grant

**Supplemental Funding:**  
Recognizing that students who are in foster care, English Learners, and/or low-income face unique barriers, the State has identified these three target student groups in order to allocate supplemental funding based on enrollment in the District.

## Concentration Grant

**Concentration Funding:**  
The State also allocates concentration funding to districts with over 55% enrollment of students in one or more of these three student groups.



# Temple City Unified School District 23-24 Projected Total LCFF Revenue by Fund Source is \$83,855,591

LCFF Funds account for 77% of the total Temple City Unified School District budget



Total LCFF Base Funds  
\$58,882,104 (70%)



LCFF Supplemental and Concentration Funds  
\$5,510,598 (7%)



Federal Funds  
\$5,510,598 (6%)



Other State Funds  
\$7,934,295 (9%)



Local Funds  
\$6,446,257 (8%)

# Temple City Unified School District 23-24 Projected Total LCAP Expenditures by Goals

\$34,604,190

LCAP Goal 1: Temple City Unified School District will support high quality teaching and learning.

\$29,151,620

LCAP Goal 2: Create engagement opportunities for student academic and social-emotional success.

\$1,572,570

LCAP Goal 3: Create and sustain 21st century learning environments that are safe, healthy, positive and attractive for all learners.

\$3,880,000



# Supplemental Grant Spending for 2022-23 and 2023-24

