

# CORTE MADERA SCHOOL SITE FORUM

PORTOLA VALLEY SCHOOL DISTRICT

OCTOBER 26, 2016

CODY ANDERSON WASNEY

ARCHITECTS

## ABOUT CODY ANDERSON WASNEY ARCHITECTS, INC.





## OUR EXPERIENCE

---



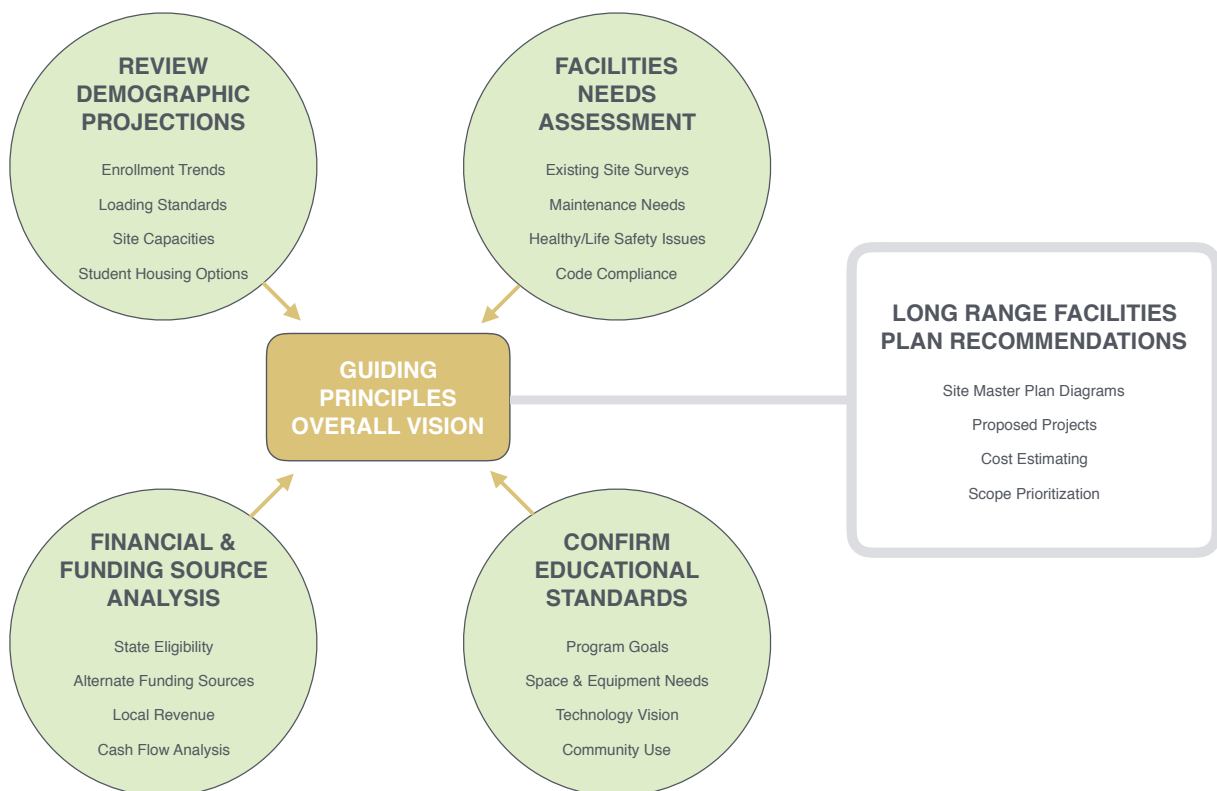
## OUR K-12 EXPERIENCE

---



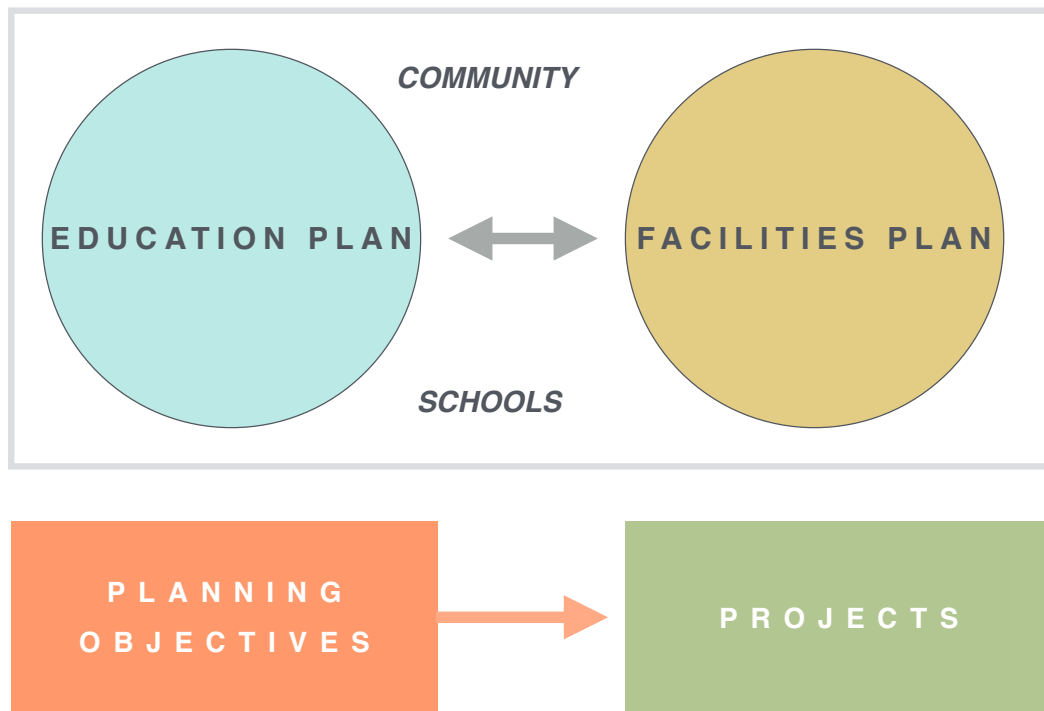
# COMPONENTS OF A MASTER PLAN

## WHAT IS A LONG RANGE FACILITIES MASTER PLAN?



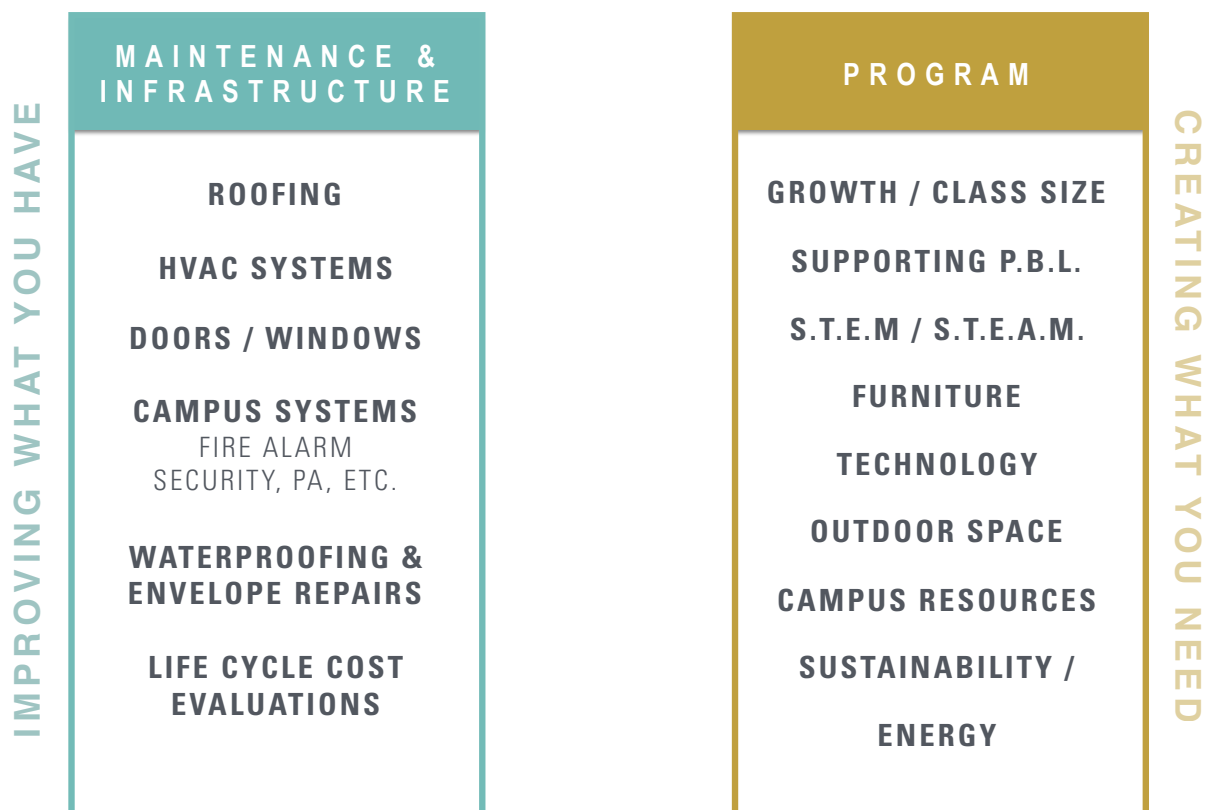
## WHY IS IT IMPORTANT?

---

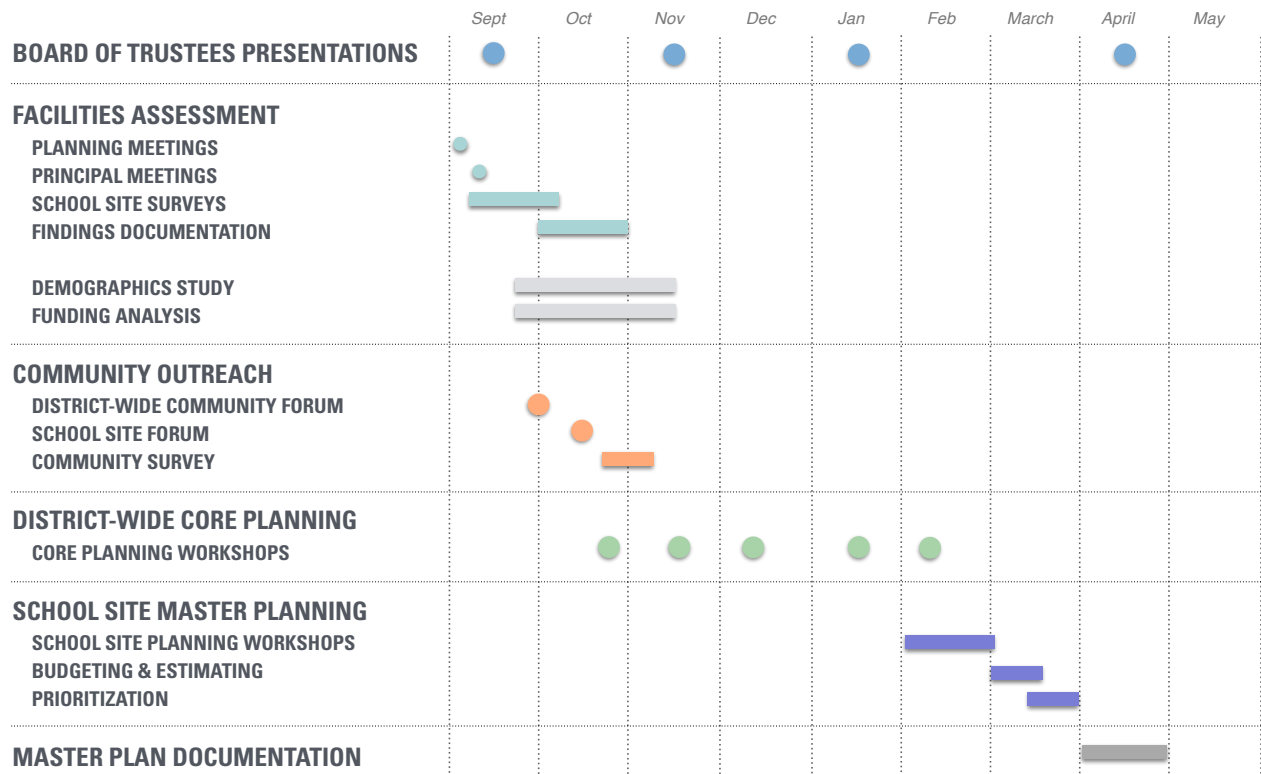


## SAMPLE PROJECT OUTCOMES

---



## WORKPLAN & SCHEDULE



## EXAMPLES & EMERGING TRENDS



# TRANSPARENCY

—

# CONNECTING CLASSROOMS

TRANSPARENCY - CONNECTING CLASSROOMS

---

TRANSPARENCY



GARY COMER COLLEGE PREP

## TRANSPARENCY - CONNECTING CLASSROOMS

---



## TRANSPARENCY - CONNECTING CLASSROOMS

---





## TRANSPARENCY - CONNECTING CLASSROOMS

---



SAN CARLOS SCHOOL

## TRANSPARENCY - CONNECTING CLASSROOMS

---



TAHOE HIGH SCHOOL



## TRANSPARENCY - CONNECTING CLASSROOMS

---



D - SCHOOL

## TRANSPARENCY - CONNECTING CLASSROOMS

---



BOOKER T WASHINGTON STEM ACADEMY



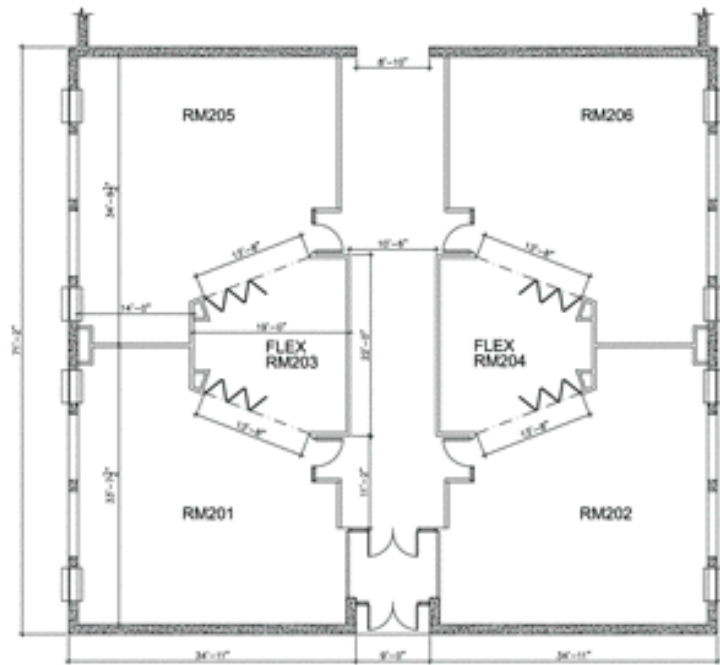
BOOKER T WASHINGTON STEM ACADEMY

CLASSROOM  
BREAKOUT  
SPACE



## CLASSROOM BREAKOUT SPACE

---



\_\_\_\_\_ SCHOOL

## CLASSROOM BREAKOUT SPACE

---



\_\_\_\_\_ SCHOOL

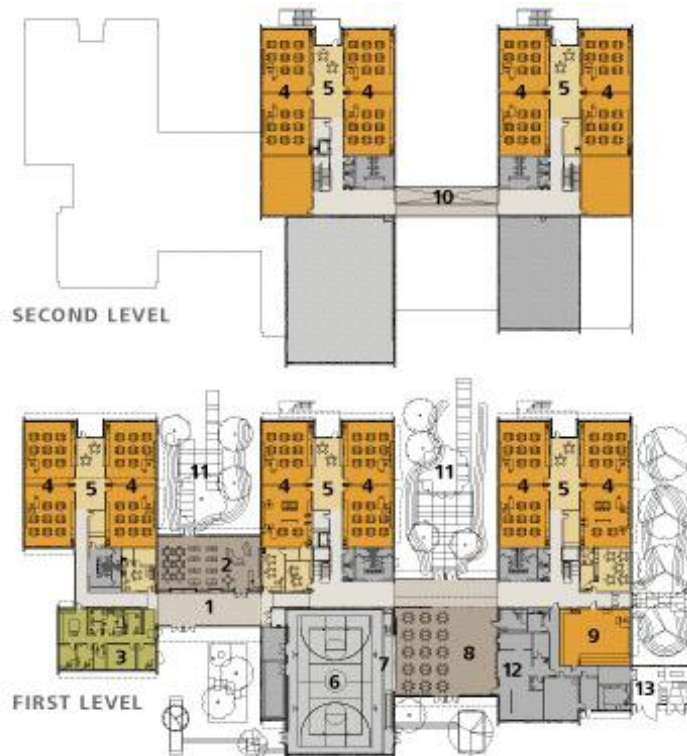
## CLASSROOM BREAKOUT SPACE



SCHOOL

## CLASSROOM BREAKOUT SPACE

- 1 Entry
- 2 Library
- 3 Administration
- 4 Classroom
- 5 Break-Out Space
- 6 Gym/Performance
- 7 Stage
- 8 Commons
- 9 Music
- 10 Skybridge
- 11 Bioswale, Outdoor Classroom & Learning Garden
- 12 Kitchen
- 13 Service Yard





## CLASSROOM BREAKOUT SPACE

---



## CLASSROOM BREAKOUT SPACE

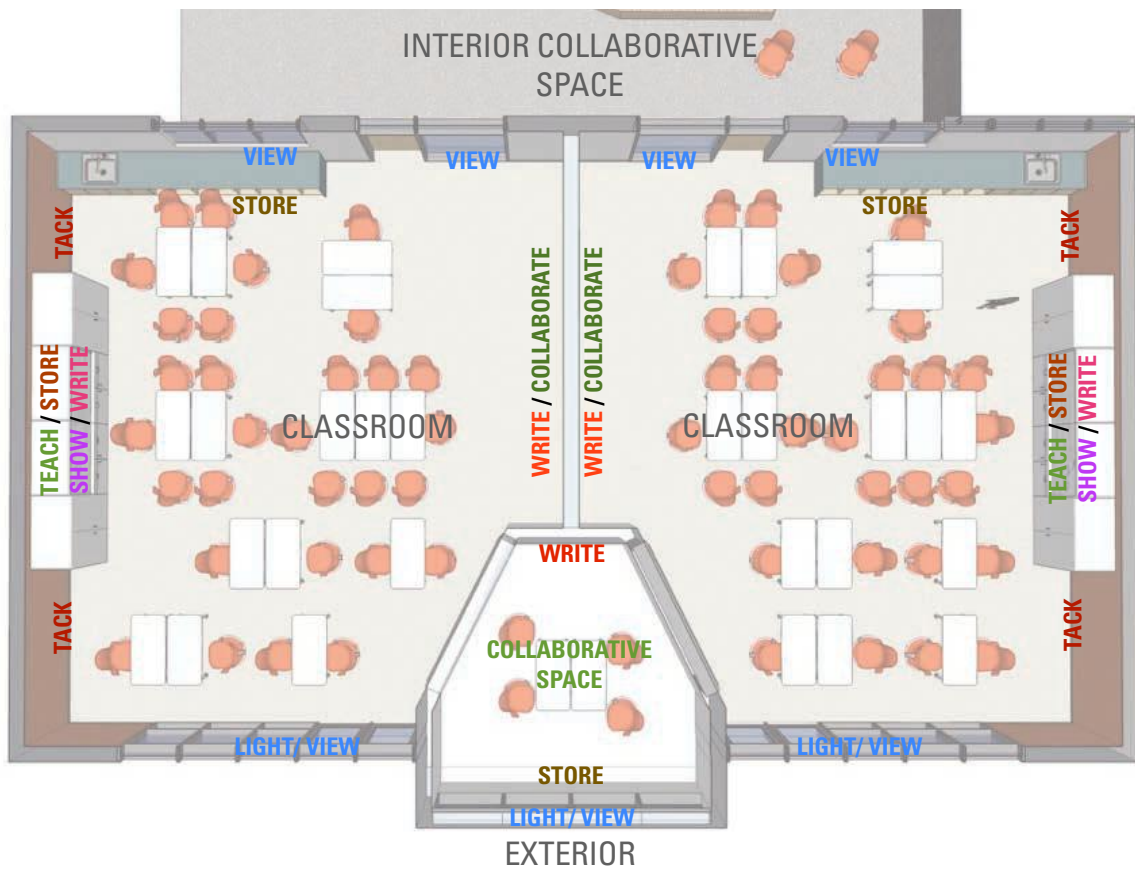
---



## CLASSROOM BREAKOUT SPACE



## CLASSROOM BREAKOUT SPACE





## CLASSROOM BREAKOUT SPACE

---



## CLASSROOM BREAKOUT SPACE

---



# INFORMAL GATHERING

## INFORMAL GATHERING

---





## INFORMAL GATHERING

---



## INFORMAL GATHERING

---



## INFORMAL GATHERING

---



\_\_\_\_\_ SCHOOL

## INFORMAL GATHERING

---



\_\_\_\_\_ SCHOOL



## INFORMAL GATHERING

---



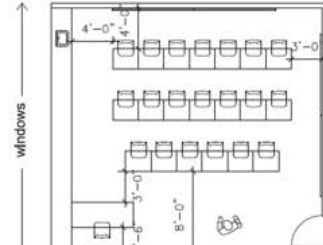
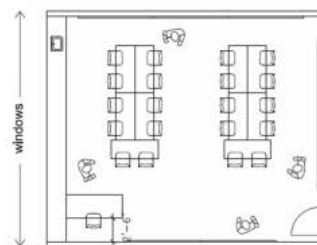
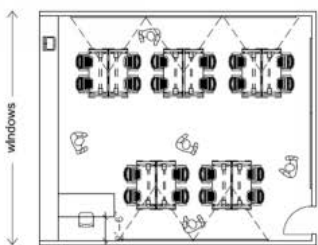
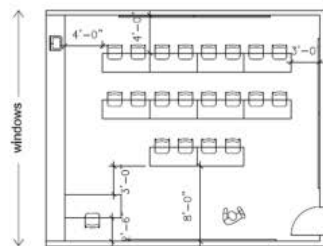
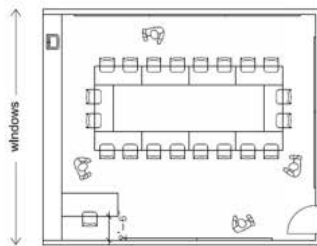
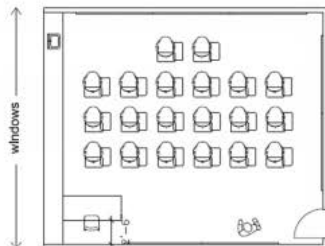
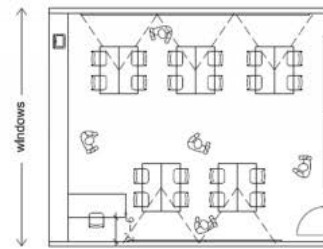
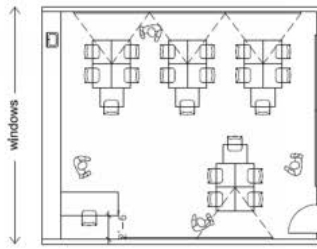
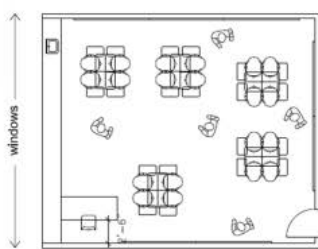
SCHOOL

FURNITURE

## FURNITURE



## FURNITURE





## FURNITURE

---



## FURNITURE

---



## FURNITURE



WRITABLE  
SURFACES /  
TECHNOLOGY



## WRITABLE SURFACES / TECHNOLOGY

---



## WRITABLE SURFACES / TECHNOLOGY

---





## WRITABLE SURFACES / TECHNOLOGY

---



## WRITABLE SURFACES / TECHNOLOGY

---





# S.T.E.M. / S.T.E.A.M. PROGRAMS

## S.T.E.M. / S.T.E.A.M. PROGRAMS

---



## S.T.E.M. / S.T.E.A.M. PROGRAMS

---



## S.T.E.M. / S.T.E.A.M. PROGRAMS

---







INDOOR/OUTDOOR  
&  
GATHERING  
SPACES



## INDOOR/OUTDOOR & GATHERING SPACES

---



## INDOOR/OUTDOOR & GATHERING SPACES

---





## INDOOR/OUTDOOR & GATHERING SPACES

---



## INDOOR/OUTDOOR & GATHERING SPACES

---



## INDOOR/OUTDOOR & GATHERING SPACES

---



MARYSVILLE-GETCHELL-HIGH-SCHOOL-CAMPUS

## INDOOR/OUTDOOR & GATHERING SPACES

---





## INDOOR/OUTDOOR & GATHERING SPACES

---



## INDOOR/OUTDOOR & GATHERING SPACES

---





## EXISTING SITE PLAN

---



## QUESTIONS & DISCUSSION