



Portola Valley School District

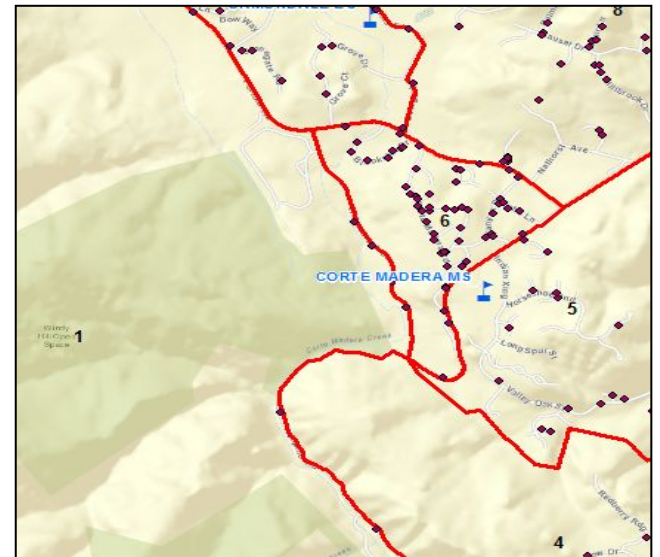
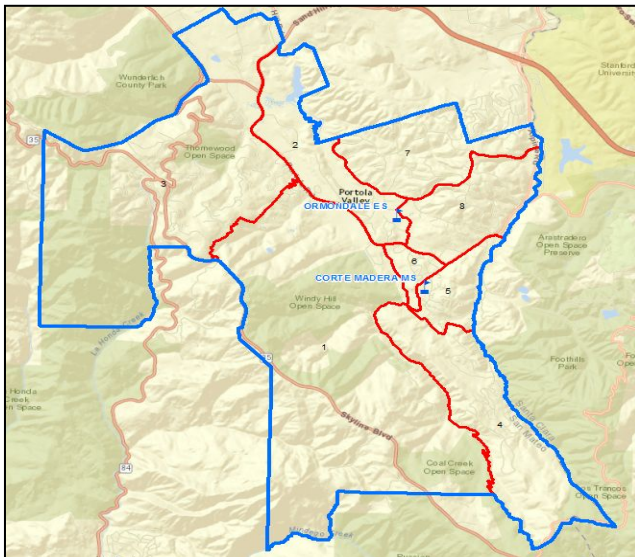
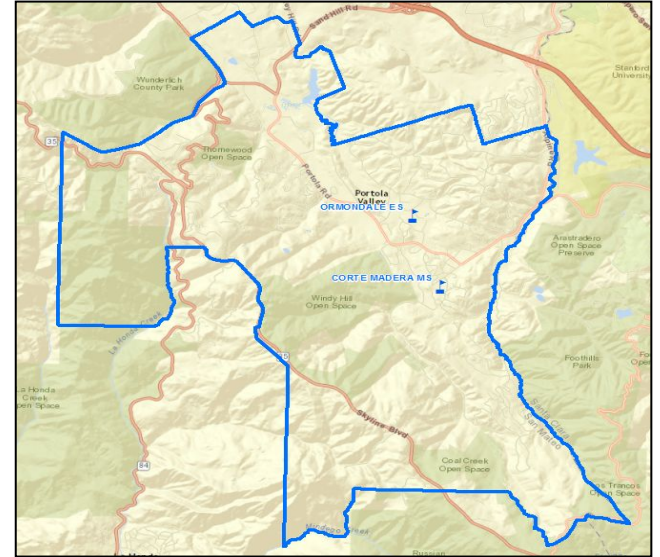
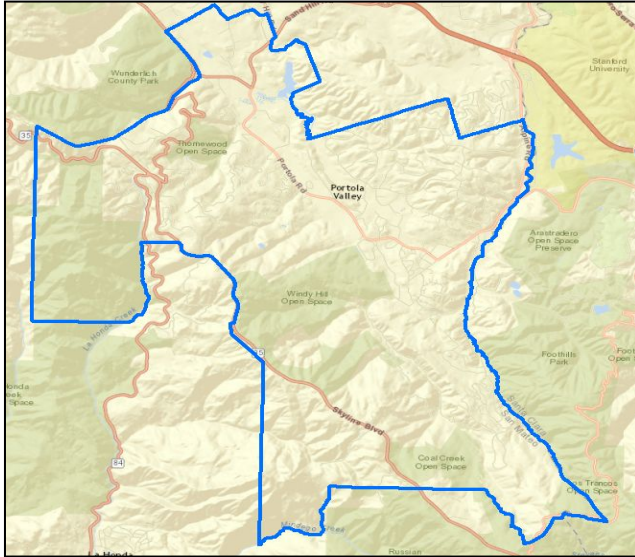
School Year 2016/17 Demographic Study Methodology and Deliverables

**Presented to the
Board of Education
April 26th, 2017**

Methodology and Deliverables

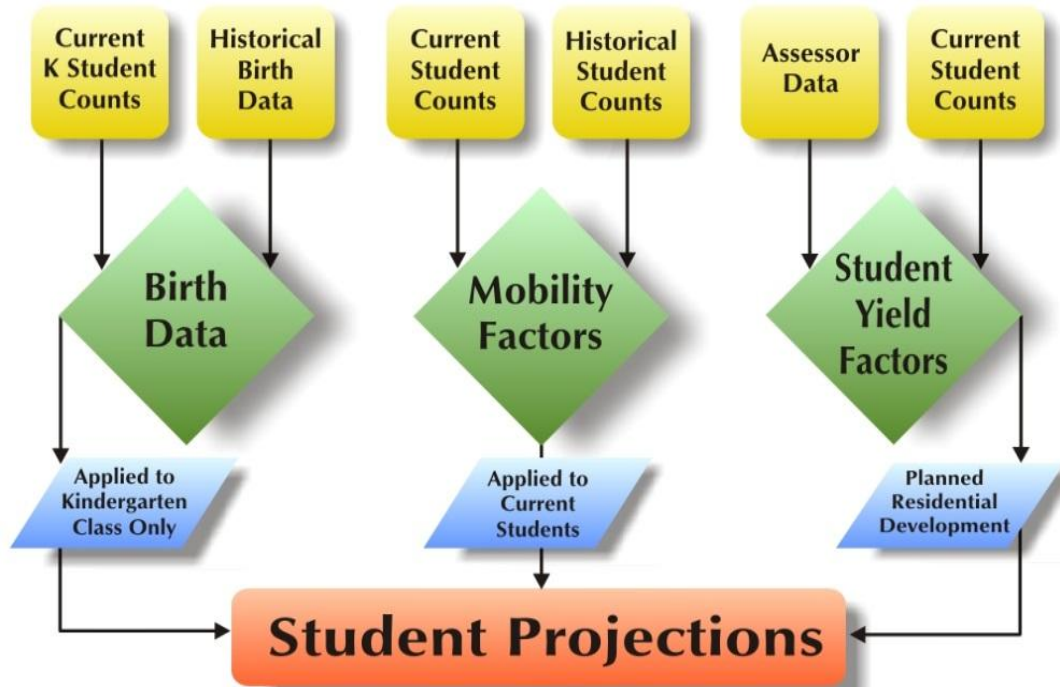
- **Projection are based upon resident student population**
 - Facilities should be located where student reside
 - School enrollment does not reflect area demographics
- **Collect data relevant to districts current and future student population**
 - Students data, area birth data, etc.
- **Create short to mid-term student population forecast**
 - District wide
- **Analyze and report on findings**
 - Detailed report of methodology and findings
- **Student Capture Rate Analysis**
 - School age population compared to students enrolled in PVSD
- **Data available for queries from district staff or Board members**
 - Create requested reports and analysis

Mapping Data



Projection Calculations

- Calculated for each of the district's Study Areas
 - Ability to plan at a neighborhood level
- Based upon actual student residence rather than current school of enrollment.
- Graduate 8th grade; Move up other grades
- Based upon two (2) factors that affect student population
 - Incoming kindergarten class (partially determined from recent birth data by zip code)
 - Mobility - Measures the retention of students as they progress.
Including move ins, move outs, new students from infill housing, drop outs, private school movement, etc....



Forecast Factors – Incoming Kindergarten

ALL KINDERGARTENERS				
Birth Year	Births ³	K Year	K Class ⁴	% of Births
2000	400	2005	69	17%
2001	404	2006	86	21%
2002	388	2007	83	21%
2003	431	2008	98	23%
2004	380	2009	79	21%
2005	358	2010	58	16%
2006	313	2011	77	25%
2007	355	2012	63	18%
2008	316	2013	61	19%
2009	290	2014	60	21%
2010	291	2015	72	25%
2011	275	2016	51	19%
2012	277	2017	47	17%
2013	280	2018	48	17%
2014	295	2019	50	17%

1. Source: Vital Statistics of California, Birth Data by Zipcode, 2000-2011

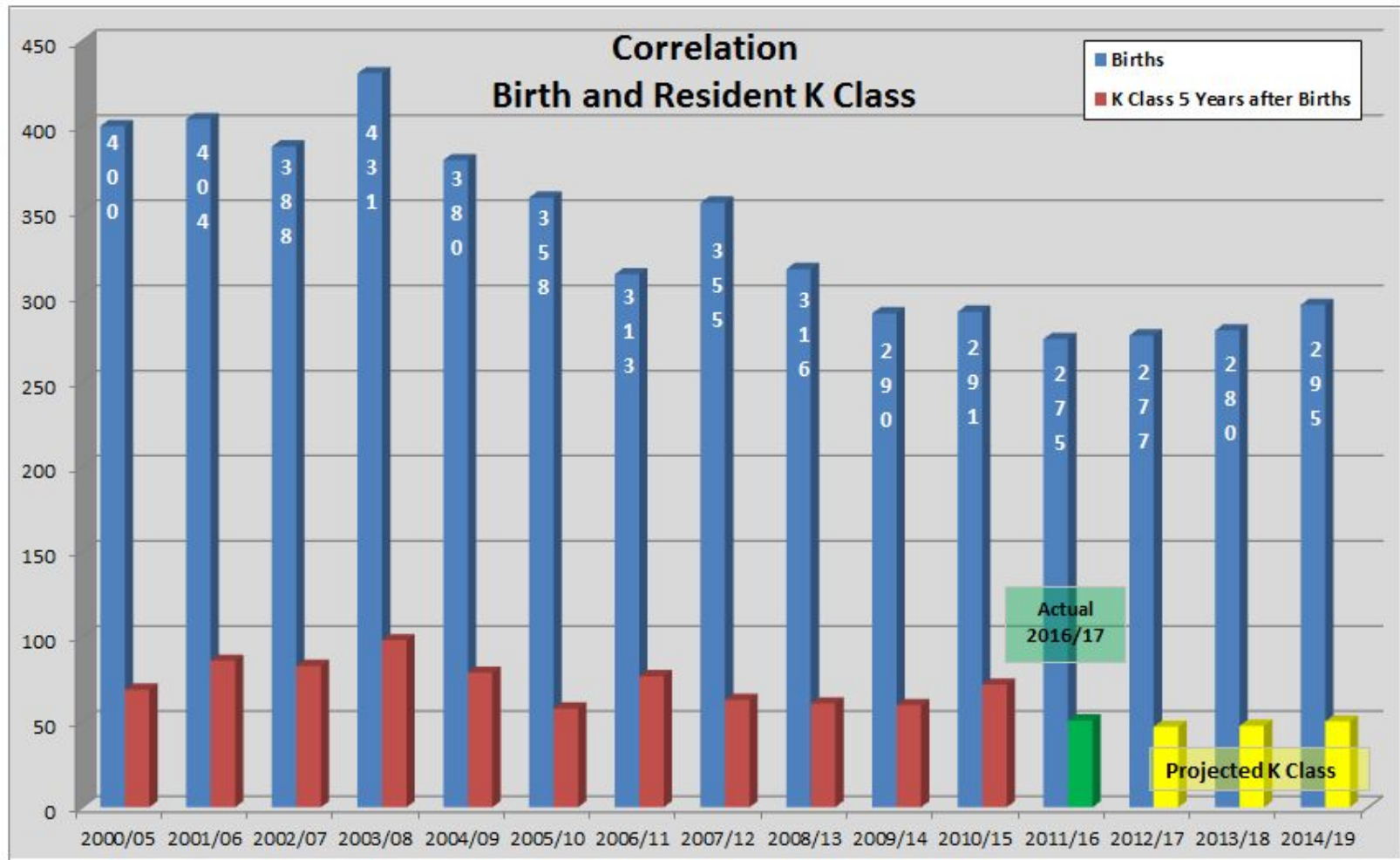
2. Source: PVSD, Student Data from CBEDS, 2005/06 - 2016/17; 2017/18 - 2019/20 from DDP Projections

3. Includes only zip codes within or partially within the PVSD boundaries 94028 and 94062

4. Kindergarten includes students residing outside of the district boundaries and Special Education students

Total K enrollment averages 20% of births five years later

Forecast Factors – Incoming Kindergarten



Forecast Factors - Mobility

Mobility is used to estimate future student retention

- Calculated for each grade at a district wide area level
- Measures the retention of students as they progress. Including move ins, move outs, new students from infill housing, drop outs, private school movement, etc.

ALL STUDENTS K-8 - MOBILITY

Portola Valley School District	Grade	Fall 2013*	Fall 2014*	Fall 2015*	Fall 2016	Grade	MOBILITY
	GK	61	60	72	51	-	-
	G1	67	67	59	65	K to 1	0.990
	G2	82	69	73	65	1 to 2	1.073
	G3	71	83	67	75	2 to 3	1.004
	G4	75	69	73	65	3 to 4	0.937
	G5	101	72	68	76	4 to 5	0.995
	G6	61	87	73	58	5 to 6	0.905
	G7	62	61	80	77	6 to 7	0.986
	G8	71	61	62	85	7 to 8	1.025
Total Students		651	629	627	617	-	-

Areas with a mobility above 1.000 are experiencing positive retention

*Fall 2013-2015 student counts were taken from the California Department of Education's DataQuest reporting tool

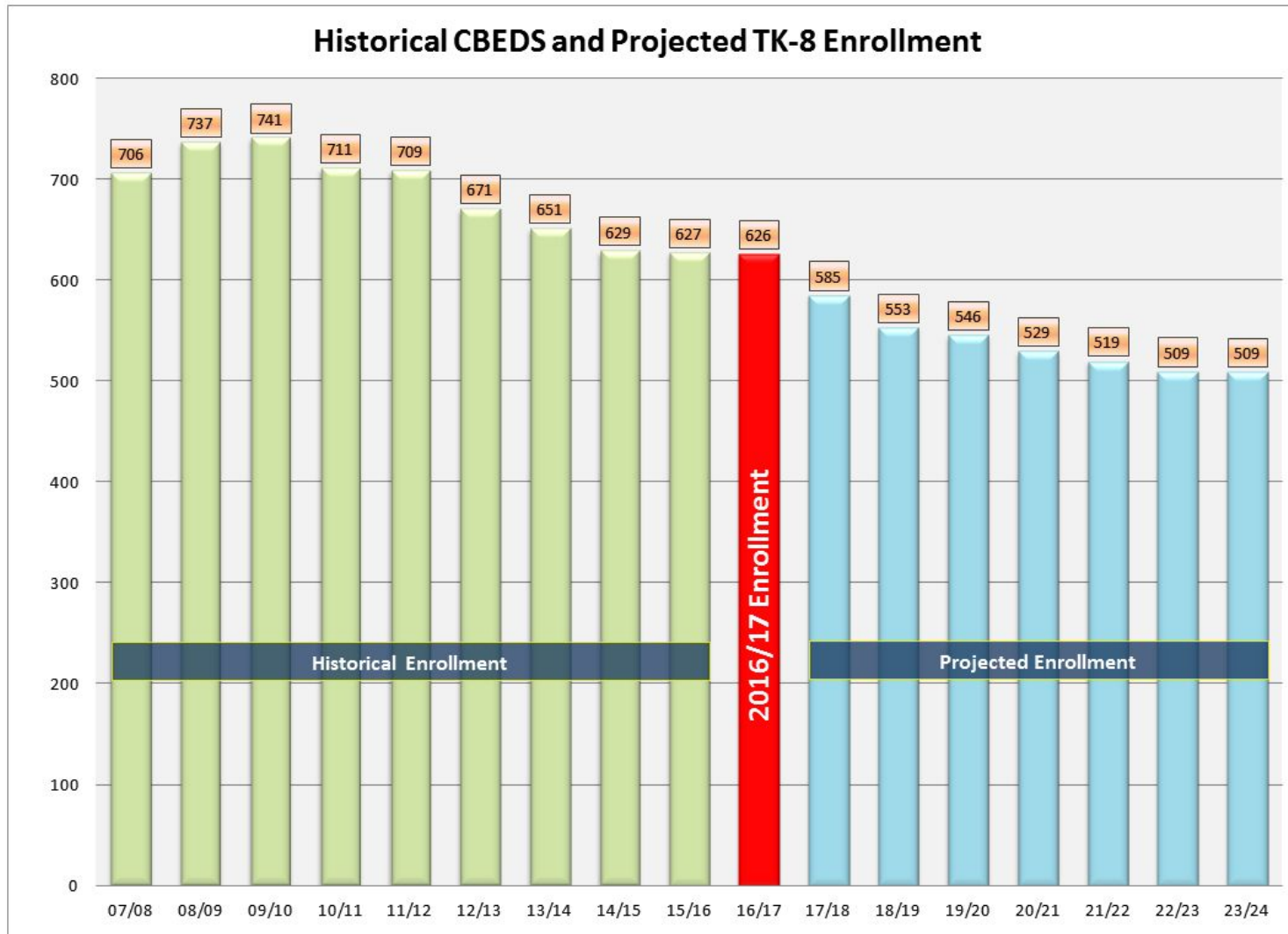
Forecast Factors - Mobility

	Actual	Projected		
	2016/17	2017/18	2018/19	2019/20
TK	9	9.1	9.2	9.7
K	47	47.3	47.8	50.4
1	57	46.5	46.9	47.4
2	55	61.2	49.9	50.3
3	65	55.2	61.4	50.1
		0.990	1.073	1.004
		K to 1	1 to 2	2 to 3

Mobility is applied to every student in every grade throughout the district

Based upon student data from 2013/14 to 2016/17

Forecasted Enrollment



Forecasted Enrollment

District Forecast Summary						
	Base File		Projected Resident Students			
	2016/17	2017/18	2018/19	2019/20	2020/21	2021/22
TK	9	9.1	9.2	9.7	9.7	9.7
K	47	47.3	47.8	50.4	50.4	50.4
1	57	46.5	46.9	47.4	49.9	49.9
2	55	61.2	49.9	50.3	50.8	53.6
3	65	55.2	61.4	50.1	50.5	51.0
4	60	60.9	51.7	57.5	47.0	47.3
5	66	59.7	60.6	51.5	57.2	46.7
6	51	59.7	54.0	54.8	46.6	51.8
7	69	50.3	58.9	53.3	54.1	45.9
8	78	70.7	51.5	60.4	54.6	55.4
Subtotal - Resident Students						
TK-3	233	219.3	215.2	207.9	211.3	214.6
4-8	324	301.3	276.7	277.5	259.5	247.1
TK-8	557	520.6	491.9	485.4	470.8	461.7
Out of District Students						
TK-3	32	30.1	29.5	28.5	29.0	29.5
4-8	37	34.4	31.6	31.7	29.6	28.2
TK-8	69	64.5	61.1	60.2	58.6	57.7
District Total Enrollment						
TK-3	265	249.4	244.7	236.4	240.3	244.0
4-8	361	335.7	308.3	309.2	289.1	275.3
TK-8	626	585.1	553.0	545.6	529.4	519.3
Change in Enrollment						
TK-8	-	-40.9	-32.1	-7.4	-16.2	-10.1
%	-	-6.5%	-5.5%	-1.3%	-3.0%	-1.9%

Student Capture Rate Analysis

2016 Student Capture Rate TK-8				
Grade Range	ESRI 2016 Estimated Grade TK-8(Age 5-13) Population ¹	2016/17 TK-8 Students Enrolled in PVSD	% Population	Potential Students
TK-3	319	265	83%	54
4-8	492	361	73%	131
Portola Valley S.D.	811	626	77%	185

1. ESRI Estimate

2010 Student Capture Rate K-8				
Grade Range	ESRI 2010 Estimated Grade K-8(Age 5-13) Population ¹	2010/11 K-8 Students Enrolled in PVSD ²	% Population	Potential Students
K-3	342	323	94%	19
4-8	463	388	84%	75
Portola Valley S.D.	805	711	88%	94







1. ESRI Estimate

2. Student counts pulled from California Department of Educations website

Other Demographics

Comparison of 2016 and 2021 School Age Population			
Attendance Area	ESRI 2016 Estimated Grade TK-8(Age 5-13) Population ¹	ESRI 2021 Estimated Grade TK-8(Age 5-13) Population ¹	Change
TK-3	319	319	EVEN
4-8	492	495	↑
Portola Valley S.D.	811	814	↑

1. ESRI Estimate

Percentage of Population				
Year		Age < 14		Age > 65
2010		17.7%		24.3%
2016		16.8%		28.2%
2021		16.0%		30.0%

Observations

- **All factors point to decline throughout the District. TK-3 projections are expected to decline by 18 students and 4-8 is expected to decline by 100.**
 - TK-8 enrollment in 2023 is expected to be 519 students.
- **Between 2000-2004 average annual births was 401. The five year period between 2010-2014 saw average births drop to 284**
 - An average decline of 117 births
 - Most likely resulting in a decrease in future kindergarten students
- **Mobility is negative in the majority of the grades**
 - More students are exiting PVSD schools than entering
 - 1st, and 4th through 7th grade mobility are all below 1.00
- **PVSD is capturing approximately 77% of the school age population residing in the PVSD boundaries**
 - In 2010 PVSD was capturing approximately 88%
- **Estimated school age population is expected to stay at its current 2016 level.**
 - In 2016 there is an estimated population of 811 school age children (age 5-13), in 2021 there is an expected population of 814
 - District as a whole is getting older

Questions?

