

Trinity Area School District Middle School Additions and Alterations



Construction Update
June 13, 2023

Intermediate Addition



DRAW
COLLECTIVE



 **Massaro**
CM SERVICES, LLC

Topping Off at Intermediate Addition



Backfill of Gym at Intermediate Addition



Steel Detailing at Intermediate Addition



Slab on Deck – Area K – 3rd Floor at Intermediate Addition



Roof Drain & Rain Conductor Install Area K – 3rd Floor at Intermediate Addition



Prep for Slab on Deck – Area K – 2nd Floor at Intermediate Addition



Metal Stairs Installed at Intermediate Addition



Double Ts at Gym at Intermediate Addition



Double Ts at Gym at Intermediate Addition



Roofing at Athletic Addition



DRAW
COLLECTIVE



 **Massaro**
CM SERVICES, LLC

RTUs Installed at Athletic Addition



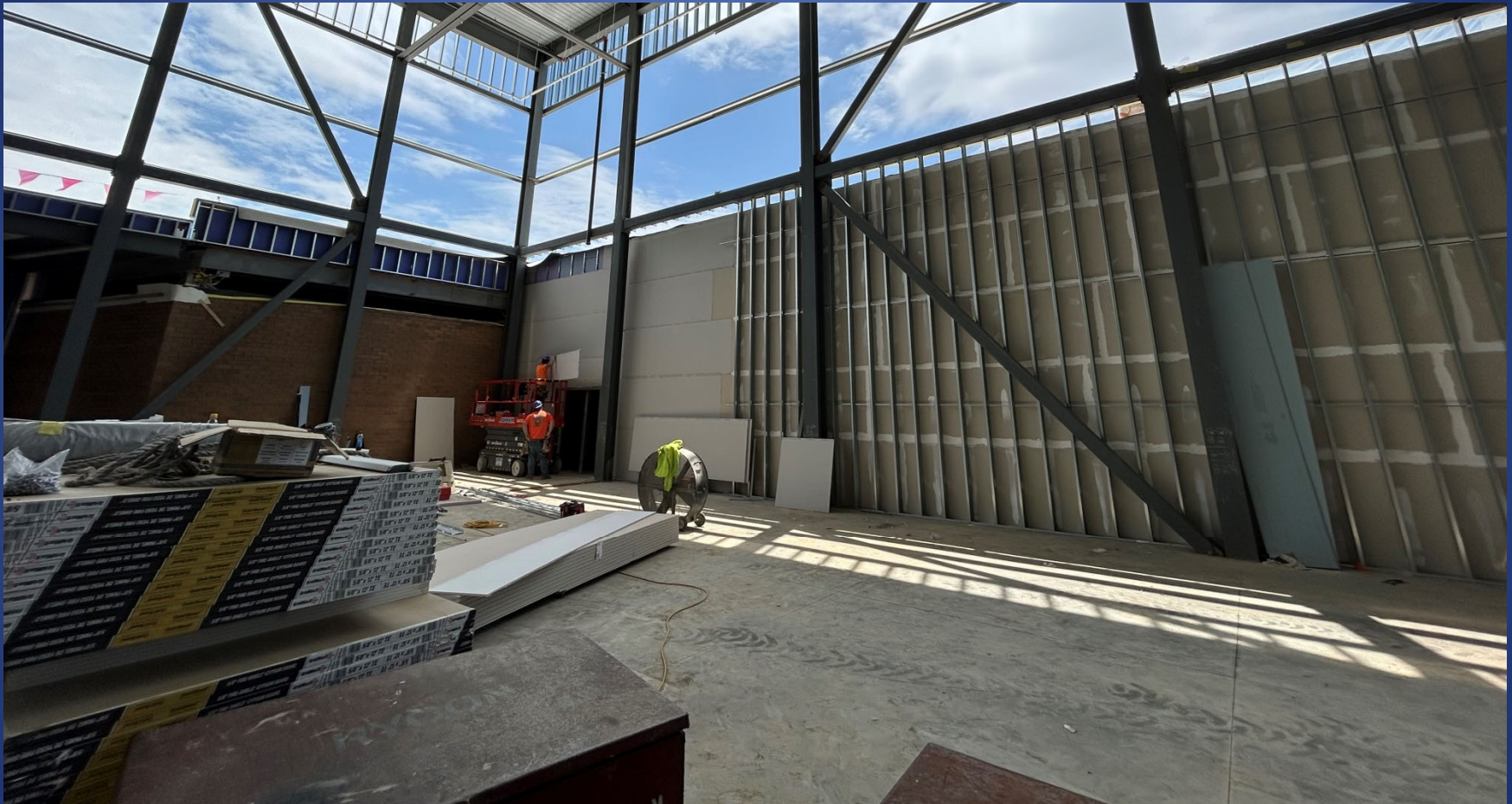
Mechanical, Sprinkler, & Electrical Rough Ins at Athletic Addition



Mechanical, Sprinkler, & Electrical Rough Ins at Athletic Addition Weight Room



Drywall Install at Athletic Addition



Retention Tank at Lower Lot Complete



New Retaining Walls at New Garage Door Location



Excavation for Intermediate Playground



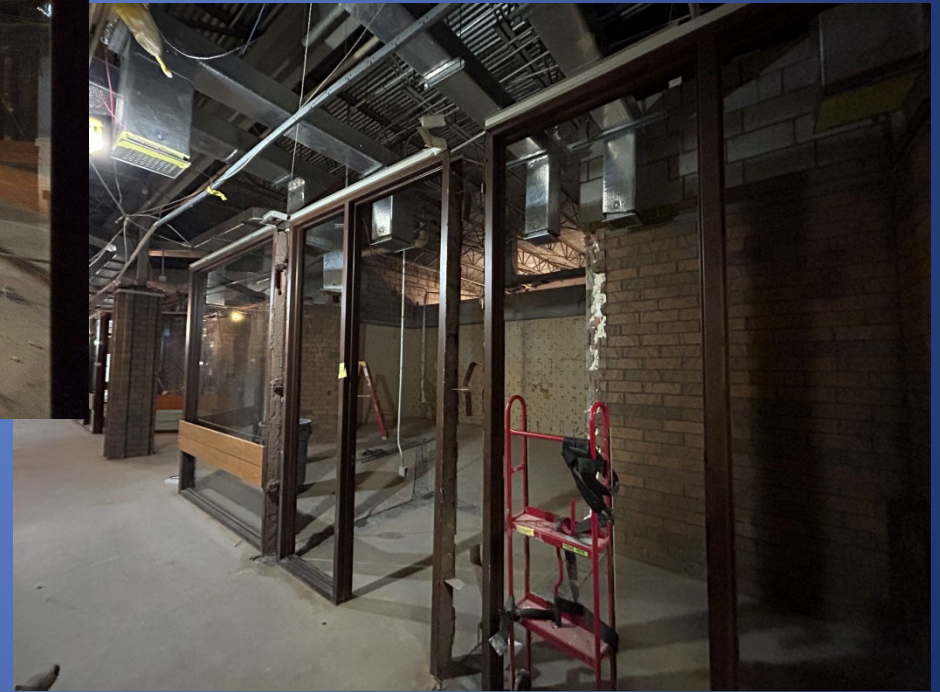
Excavation for New Parking Areas Phase 7 Sitework



Framing at Life Skills Restrooms



Demo at Music Area



Protection of Equipment at Kitchen



Ceiling Demo at Cafeteria



Demo at Gym



Installation of Flues from Boilers



Overall Progress

Upcoming Work

- Continue Steel Decking at Intermediate Addition
- Continue Slab on Decks at Intermediate Addition
- MEP Rough Ins at Intermediate Addition
- Complete MEP Rough-ins at Athletic Addition
- Restroom Framing at Athletic Addition
- Metal Panel Install at Athletic Addition
- Plumbing Rough Ins at Life Skills Restrooms
- Complete Cafeteria Ceiling Demo
- MEP Rough Ins in Cafeteria
- Complete Music Area Demo
- Complete Gym Demo
- Demo of Patio at Special Ed
- Continue Work for New Maintenance Entrance
- Phase 7 Sitework



Project Stats

- Safety = 226 Days with Zero Recordable Accidents

Project Schedule

- Current Schedule Update shows project completing on schedule