



# Fairfield Public Schools

## Redistricting Planning Scenarios

June 13, 2023



# Charge to Consultant: Key Elements

- Target 85%-90% operational utilization rate for all schools after subtracting for unique specialized programming.
- Possibly reconsider secondary school feeder plans.
- Bring the disparity in racial composition between any one elementary school and the district-wide K-5 average within the limits required by law in a manner that is sustainable.

[Link to full Charge](#)

*Approved by Board of Education on January 24, 2023*



# Timeline & Process

Jan – Feb 2023

- BOE Develops & Adopts “charge to consultant”
  - Scenario Planning Direction
  - Guiding Criteria to inform redistricting process

March - June

- Scenario Development
- Iterative planning process with administrative working group to review, discuss and obtain feedback.
- Revised options were evaluated, and pros/cons weighed
- 3 Viable options Presented to BOE

July - Aug

- Preferred Scenario Refinement
- FPS will analyze operational considerations for the preferred options

Sept – Oct

- SLAM will update options with 2023-24 enrollment
- Launch online interactive map viewer illustrating the proposed changes to attendance boundaries
- Presentations to BOE
- BOE Adoption

Nov - June

- FPS Implementation Planning
- Staffing Considerations
- Transportation Routing
- Mobilization

- Adopted Plan in place for 2024-25 school year.



# Capacity & Utilization

- For districts like Fairfield that zone their elementary schools by neighborhood, we recommend using **85% to 90% utilization** for long range planning
  - Typically, utilization is calculated based on a percentage of the **maximum capacity** (based on maximum class size policies).
  - Maximum class sizes are 23 in grades K-2 and 25 in grades 3-5, with lower class sizes at McKinley.
- Historically, Fairfield has used 21 students per classroom when determining its Operational Capacity.
- **Operational Capacity has an effective utilization rate of 87.5% of the maximum based on the district's class size policy.**



# Capacity & Utilization

## Maximum Capacity

*Example from a 4-section per grade school*

Grade	Max Class Size	Max Enrollment
K	23	92
1	23	92
2	23	92
3	25	100
4	25	100
5	25	100
<b>Maximum Capacity</b>		<b>576</b>
<b>Enrollment Target Range</b> <small>Based on 85% to 90% utilization</small>		<b>490 to 518</b>
<b>Avg. Class Size Target Range</b> <small>Based on 85% to 90% utilization</small>		<b>20.4 to 21.6</b> students/CR

## Operational Capacity

*Example from a 4-section per grade school*

Grade	Max Class Size	Max Enrollment
K	21	84
1	21	84
2	21	84
3	21	84
4	21	84
5	21	84
<b>Operational Capacity</b>		<b>504</b>
<b>Effective Utilization Rate</b>		<b>87.5%</b>
<b>Avg. Class Size</b>		<b>21 students/CR</b>

**Note that 100% of the operational capacity has an effective utilization rate of 87.5%, which is within the 85% to 90% range established by the BOE Charge.**



# Capacity & Utilization

**100% of the Operational Capacity is an ideal planning target for the purposes of Scenario Planning.**

This results in an effective utilization rate of 87.5% and average class size of 21 students per classroom.



# Capacity & Special Programs

School	Total Full-Size Classrooms <sup>1</sup>	Total Full-Size Instructional Classrooms	K-5 Grade Level Instruction	CLC	Early Literacy Academy <sup>2</sup>	Therapeutic Learning Centers	Pre-K <sup>3</sup>	K-5 Operational Capacity
Burr	28	24	22	2	0	0	0	462
Dwight	21	18	18	0	0	0	0	378
Holland Hill	27	24	24	0	0	0	0	504
Jennings	23	18	17	1	0	0	0	357
McKinley	30	24	22	0	2	0	0	462
Mill Hill	25	21	19	2	0	0	0	399
North Stratfield	28	24	24	0	0	0	0	504
Osborn Hill	30	24	22	2	0	0	0	462
Riverfield	27	24	23	0	0	1	0	483
Roger Sherman	25	22	22	0	0	0	0	462
Stratfield	27	24	20	0	0	0	4	420
<b>Total All Schools</b>	<b>291</b>	<b>247</b>	<b>233</b>	<b>7</b>	<b>2</b>	<b>1</b>	<b>4</b>	<b>4,893</b>
<b>Future Program Expansion</b>				<b>9</b>	<b>3</b>	<b>2</b>	<b>9</b>	<b>4,704</b>

- **Special Programs deducted from Operational Capacity**
- Worked with FPS staff to place special program expansions in appropriate buildings.
- Two additional CLC classrooms ideally located at Jennings (1) and Riverfield (1).
- Early Literacy Academy classrooms should be located together. May out-grow McKinley and can move to a different building – location to be determined in each scenario based on space availability.
- Therapeutic Learning Center expansion will be at Riverfield (2 classrooms total)
- Pre-K - strive for clusters of three Pre-K classrooms to maintain efficient program delivery. Potential schools include Holland Hill, Jennings, North Stratfield, or Stratfield.



# State Racial Balance Law

## CT General Statutes § 10-226

**Racially Imbalanced:** Schools whose minority composition varies by 25% or more from the district's minority composition for the same grades.

- District must submit a plan to the CSDE addressing how imbalance will be corrected

**Impending Racial Imbalance:** Schools whose minority composition varies between 15% and 25% from the district's minority composition for the same grades.



- District is notified of impending racial imbalance by CSDE, but not required to submit a Racial Balance Plan.



# Fairfield "Planning Blocks" K-5 Enrollment, by Racial Balance Category: 2022-23

 School Points

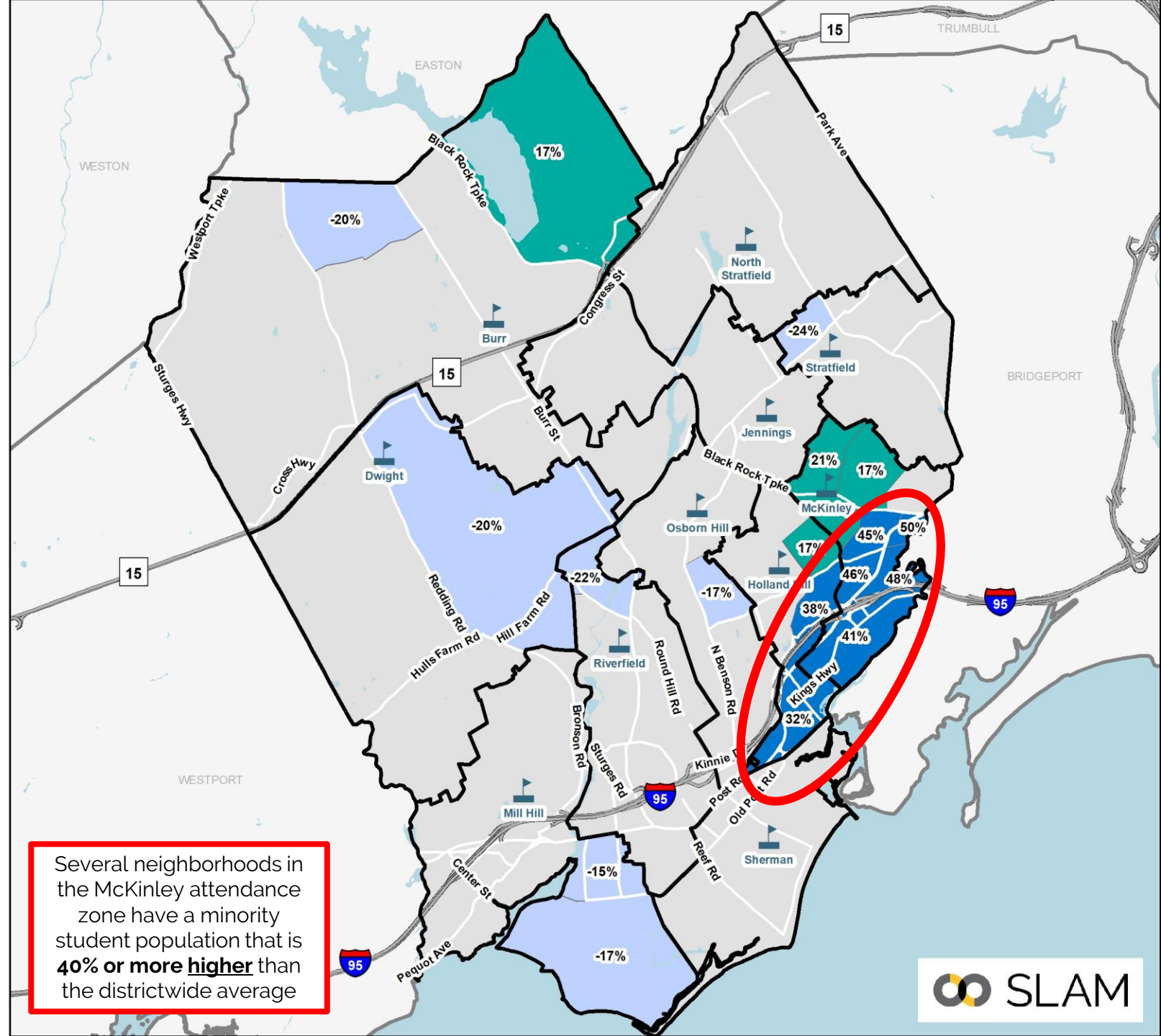
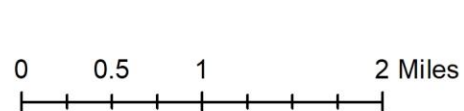
## Racial Balance Category (Deviation from District Average)

-  Impending Imbalance (15% to 24.9% Below District Avg.)
-  Balanced (within 15% of District Avg.)
-  Impending Imbalance (15% to 24.9% Higher than District Avg.)
-  Imbalanced (>25% Higher than District Avg.)

*Calculated based on PSIS Information provided by Fairfield Public Schools*

District of Residence	% Minority	% Deviation
Burr	23.6%	-3.1%
Dwight	15.9%	-10.9%
Holland Hill	41.7%	<b>15.0%</b>
Jennings	27.7%	1.0%
McKinley	56.6%	<b>29.8%</b>
Mill Hill	20.5%	-6.3%
North Stratfield	23.7%	-3.0%
Osborn Hill	21.0%	-5.8%
Riverfield	18.1%	-8.6%
Roger Sherman	15.8%	-10.9%
Stratfield	22.4%	-4.3%
<b>Districtwide K-5 Average</b>	<b>26.7%</b>	<b>0.0%</b>

*Based on students' elementary school district of residence. Percentage differs from official racial balance reports from CTSDE*



Several neighborhoods in the McKinley attendance zone have a minority student population that is **40% or more higher** than the districtwide average



# Racial Balance: Approach

- Fairfield's Racial Imbalance largely reflects its neighborhood-based attendance zones and the high concentration of minority students in specific neighborhoods in McKinley and Holland Hill.
  - Almost all neighborhoods in McKinley have a significantly higher share of minority students than the district as a whole. Several neighborhoods exceed the districtwide average **by over 40%**.
- **In order to achieve racial balance, attendance zones need to pair together neighborhoods with high minority student populations with neighborhoods with low minority student populations.**
- **Placing high minority concentration neighborhoods in two elementary schools would likely result in two schools being in the “high impending” category (below, but approaching 25% imbalance).**
  - May meet statutory obligations in the near-term. However, this may not be a viable long-term solution as changing demographics could result in one or more schools being out of compliance with the state racial balance law in the future.
- **Placing high minority concentration neighborhoods in three elementary schools, or creating satellite zones, would likely address racial imbalance in a more sustainable and long-term fashion.**



# Redistricting Approaches

## Repurpose Elementary School as a PK Center

Repurpose one of the lower capacity elementary schools as a districtwide Pre-K Center.

- Repurpose Jennings
- Repurpose Dwight

## Satellite Zones

Non-contiguous attendance zones

## Traditional Redistricting

Contiguous attendance zones

**SLAM created two scenarios (plus sub-scenarios through refinement) for each redistricting approach and, working with FPS administrators, selected the best performing scenario under each approach for consideration by the BOE**



# Objectives and Metrics

Objective	Description	Metrics		
		Good	Fair	Poor
<b>Address Racial Imbalance</b>	Based on 7-year historic lookback: All schools comply with the state racial balance law (<25% of districtwide average), ideally with a 5% buffer to ensure long-term viability	All schools within 20% of districtwide average over the last 5 years	All schools compliant with state racial balance law, but one or more schools >20% of districtwide average over the last 5 years.	One or more schools non-compliant with state racial balance law over the last five years.
<b>Balance Utilization Across all Elementary Schools</b>	<b>Over the next five years:</b> <ul style="list-style-type: none"> <li>All elementary schools average +/- 5% of the districtwide average utilization</li> <li>Note that districtwide average utilization is not projected to exceed 100% of the operational target under any scenario</li> </ul>	All schools within 5% of districtwide average utilization	All schools within 10% of districtwide average utilization	Some schools are greater than 10% difference from districtwide average utilization
<b>Minimize Redistricting Impacts</b>	Number of elementary students redistricted	10% or less of students	11% to 20% of students	>20% of students
<b>Student Walker Impacts</b>	Net impact of student walkers impacted	5% or less of walkers	6% to 10% of walkers	>10% of walkers
<b>Secondary School Impacts</b>	Changes to Secondary School feeder patterns Redistricting impacts to MS and HS students	<b>Qualitative metric</b> Secondary school impacts dependent on implementation approach		



# Scenario Comparison

	Repurpose Facility as an ECC		Satellite Zones		Traditional Redistricting	
Objective	Scenario 1A	Scenario 1B	Scenario 2	Scenario 3	Scenario 4	Scenario 5
Scenario Description	Repurpose Jennings as an ECC	Repurpose Dwight as an ECC	Satellite Zones, balanced utilization	Satellite Zones, minimize disruption	Traditional redistricting, balanced utilization	Traditional redistricting, minimize disruption
Address Racial Imbalance	<b>Good</b> All schools less than 20% of districtwide average over the last five years.	<b>Eliminated</b>	<b>Eliminated</b>	<b>Good</b> All schools less than 20% of districtwide average over the last five years.	<b>Fair</b> McKinley and Holland Hill racially balanced, but exceed 20% in one or more years	<b>Eliminated</b>
Balance Utilization Across all Elementary Schools (next 5-year average)	<b>Good</b> All schools within 5% of districtwide average over next 5 years. No school over 100% of operational capacity.			<b>Fair</b> Most schools within 5% of operational target. Underutilized Burr (~10% lower than district average)	<b>Good</b> All schools within 5% of districtwide average over next 5 years. No school over 100% of operational capacity.	
Minimize Redistricting Impacts	<b>Fair</b> 18% of ES students			<b>Good</b> 9% of ES students	<b>Fair</b> 15% of ES students	
Student Walker Net Impacts	<b>Good</b> Net impacts to ~5% of elementary walkers. Preserves Fairfield Woods walking community			<b>Good</b> Impacts to ~1% of elementary walkers.	<b>Fair</b> Net impacts to ~6% of elementary walkers	
Secondary School Impacts	<b>Modified MS feeder pattern</b> No changes to HS feeder  23% of MS students impacted 4% of HS students impacted			No changes to MS or HS feeder patterns  No redistricting impact for MS and HS students	No changes to MS or HS feeder patterns  7% of MS students impacted 5% of HS students impacted	



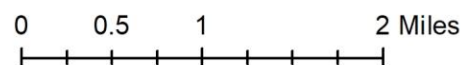
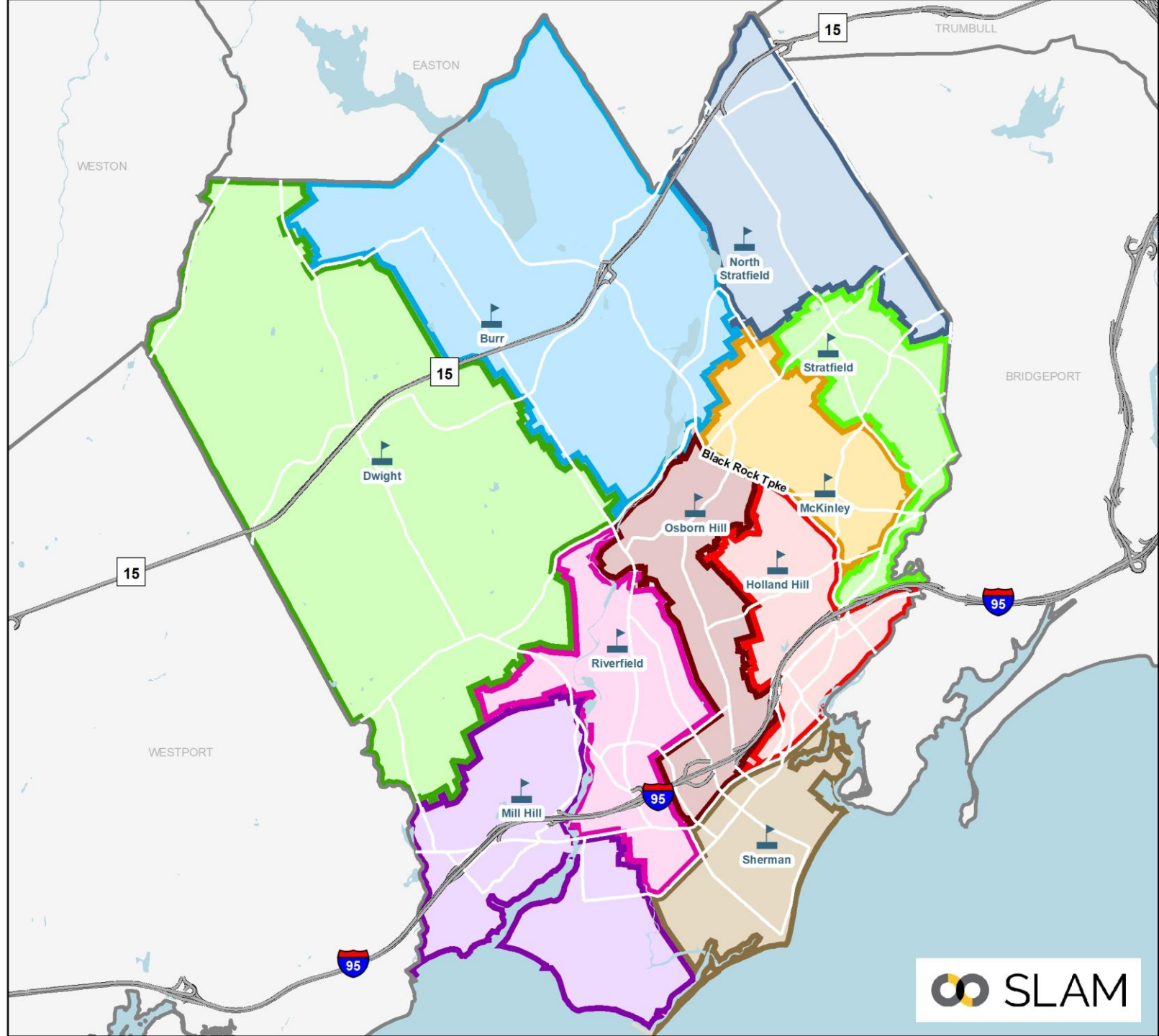
# Scenario 1A

- Repurpose Jennings as an Early Childhood Center (ECC)
- Comprehensive Elementary Redistricting to Address the Following:
  - Reassign Jennings K-5 students
  - Address Racial Imbalance at McKinley
  - Balance Utilization Across All Schools
- Modified Middle School Feeder Pattern to preserve Fairfield Woods walking community
- High School Feeder Pattern remains the same



# Scenario 1A Elementary Districts

- |   |  |
|---|--|
|  Burr         |  North Stratfield |
|  Dwight       |  Osborn Hill      |
|  Holland Hill |  Riverfield       |
|  McKinley     |  Roger Sherman    |
|  Mill Hill    |  Stratfield       |
|   |  School Points    |



## Scenario 1A Elementary Change Areas



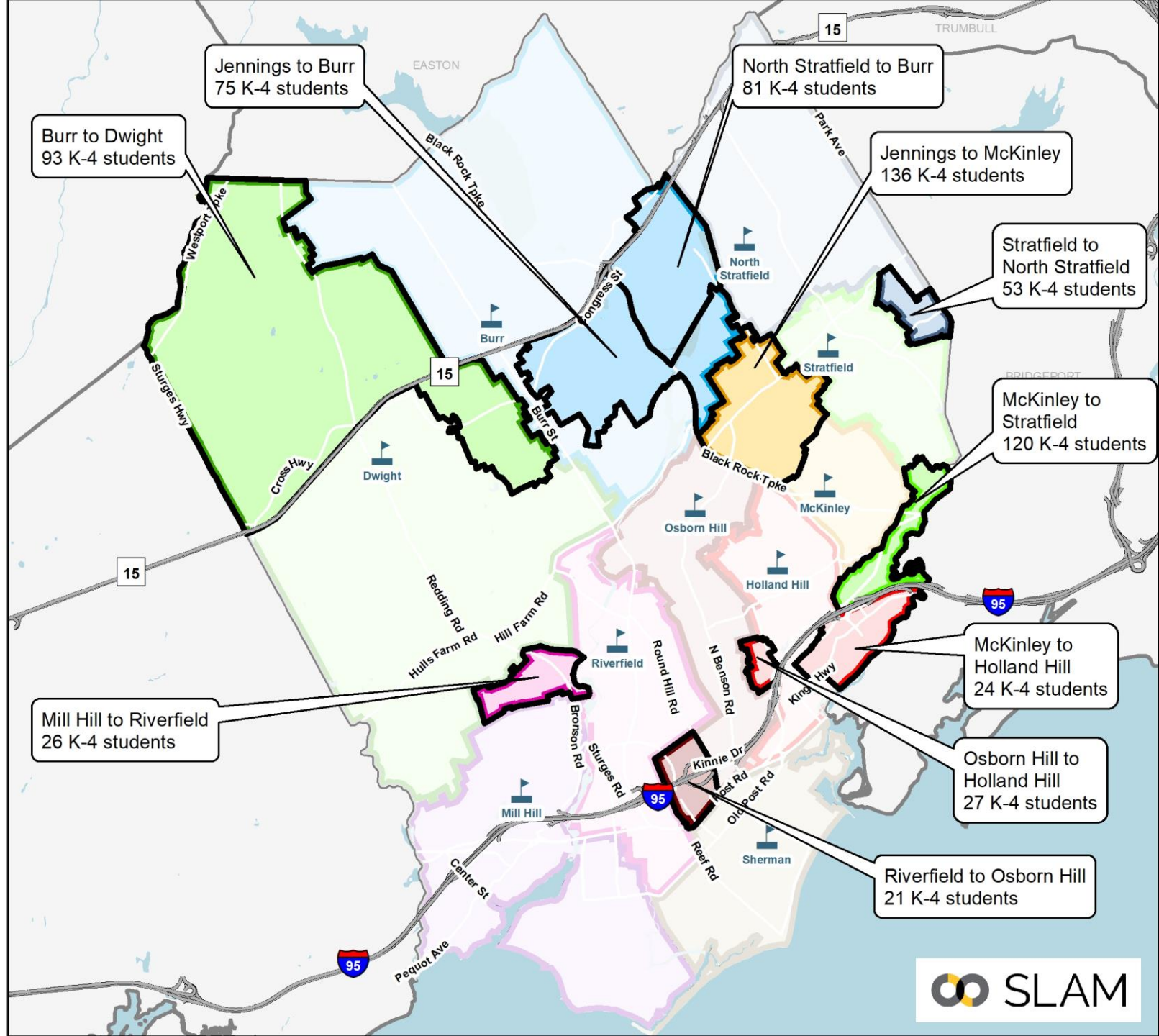
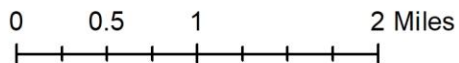
## Redistricting Impacts (K-4):

- ~18% of elementary students

## Greatest Share of Impacts to:

- Jennings: 31% of total impact
- McKinley: 21% of total impact
- Burr: 18% of total impact
- N. Stratfield: 11% of total impact

Note: All students were returned to their zoned schools







# Scenario 1A: Programs & Utilization

School	Capacity & Programs						Enrollment & Utilization (22-23)		
	Total Full-Sized CRs	K-5 Instruction	CLC	Early Literacy Academy	Therapeutic Learning Centers	ECC	K-5 Operational Capacity	Scenario 1A Enrollment	Scenario 1A Utilization
Burr	28	22	2	0	0	0	462	407	88.1%
Dwight	21	18	0	0	0	0	378	353	93.4%
Holland Hill	27	24	0	0	0	0	504	437	86.7%
Jennings ECC	23	-	-	-	-	9	-	-	-
McKinley	30	24	0	0	0	0	504	438	86.9%
Mill Hill	25	19	2	0	0	0	399	366	91.7%
North Stratfield	28	22	2	0	0	0	462	398	86.1%
Osborn Hill	30	22	2	0	0	0	462	428	92.6%
Riverfield	27	21	1	0	2	0	441	392	88.9%
Roger Sherman	25	22	0	0	0	0	462	397	85.9%
Stratfield	27	21	0	3	0	0	441	422	95.7%
<b>Total All Schools</b>	<b>291</b>	<b>215</b>	<b>9</b>	<b>3</b>	<b>2</b>	<b>9</b>	<b>4,515</b>	<b>4,038</b>	<b>89.4%</b>

- Overall utilization of 89.4%, with all schools within ~5% of districtwide average.
- Jennings CLC classrooms relocated to N. Stratfield. Early Literacy Academy shifted to Stratfield



# Scenario 1A: Racial Balance

- All schools in compliance with state racial balance law.
- No school exceeds 20% of districtwide average at any point over the last seven years.
- Holland Hill and McKinley would have been impending imbalance at some point over the last 7 years, **but never would have exceeded 18% of districtwide average.**

## Scenario 1A Racial Balance: 7-Year Look Back

School	2016-17	2017-18	2018-19	2019-20	2020-21	2021-22	2022-23
Burr	-5.3%	-3.5%	-3.9%	-4.4%	-6.1%	-5.7%	-6.3%
Dwight	-9.7%	-11.6%	-9.9%	-9.3%	-7.8%	-7.7%	-8.0%
Holland Hill	14.6%	15.2%	14.4%	14.5%	14.6%	17.4%	15.8%
McKinley	13.3%	13.8%	14.0%	16.0%	17.2%	16.1%	16.7%
Mill Hill	-4.3%	-3.1%	-4.9%	-4.2%	-3.9%	-5.8%	-6.0%
North Stratfield	3.5%	2.2%	1.1%	-0.2%	0.2%	0.6%	-0.1%
Osborn Hill	-8.4%	-6.6%	-5.5%	-5.4%	-3.8%	-5.7%	-5.2%
Riverfield	-9.7%	-9.1%	-9.4%	-10.0%	-10.7%	-8.6%	-10.1%
Roger Sherman	-9.9%	-10.2%	-10.1%	-12.1%	-13.4%	-13.5%	-10.9%
Stratfield	11.6%	9.1%	8.4%	9.3%	8.3%	7.7%	9.3%
<b>K-5 Total</b>	<b>0.0%</b>	<b>0.0%</b>	<b>0.0%</b>	<b>0.0%</b>	<b>0.0%</b>	<b>0.0%</b>	<b>0.0%</b>

Impending Imbalance

Racially Imbalanced



# Scenario 1A: Projected Utilization

School	22-23	23-24	24-25	25-26	26-27	27-28	28-29	29-30	30-31	31-32	32-33	1st 5 Year Avg	2nd 5 Year Avg
Burr	88.1%	87.0%	89.8%	87.4%	92.6%	94.6%	95.7%	97.8%	100.2%	101.3%	101.3%	<b>90.3%</b>	<b>99.3%</b>
Dwight	93.4%	94.2%	96.8%	95.0%	94.2%	93.1%	94.2%	95.0%	96.8%	98.1%	97.6%	<b>94.7%</b>	<b>96.3%</b>
Holland Hill	86.7%	88.5%	90.7%	93.1%	96.4%	98.0%	98.8%	99.2%	101.6%	103.0%	103.2%	<b>93.3%</b>	<b>101.2%</b>
Jennings	Repurposed as ECC												
McKinley	86.9%	89.7%	86.3%	87.5%	88.3%	88.7%	92.7%	91.9%	92.5%	93.3%	93.1%	<b>88.1%</b>	<b>92.7%</b>
Mill Hill	91.7%	93.0%	91.0%	93.2%	93.7%	93.5%	94.2%	95.0%	95.7%	97.0%	96.7%	<b>92.9%</b>	<b>95.7%</b>
North Stratfield	86.1%	89.2%	90.7%	90.7%	91.8%	89.4%	91.1%	92.4%	93.1%	94.2%	93.9%	<b>90.3%</b>	<b>92.9%</b>
Osborn Hill	92.6%	95.0%	96.8%	96.3%	98.3%	96.3%	95.0%	96.1%	97.0%	97.8%	97.4%	<b>96.5%</b>	<b>96.7%</b>
Riverfield	88.9%	88.2%	88.0%	89.1%	94.1%	90.5%	91.2%	93.0%	93.9%	95.2%	95.0%	<b>90.0%</b>	<b>93.7%</b>
Roger Sherman	85.9%	87.9%	88.3%	87.7%	86.4%	89.2%	89.2%	90.9%	91.8%	92.6%	92.4%	<b>87.9%</b>	<b>91.4%</b>
Stratfield	95.7%	99.3%	96.8%	96.8%	95.0%	96.6%	96.4%	98.2%	99.5%	100.7%	100.7%	<b>96.9%</b>	<b>99.1%</b>
<b>Total</b>	<b>89.4%</b>	<b>91.1%</b>	<b>91.4%</b>	<b>91.6%</b>	<b>93.0%</b>	<b>93.0%</b>	<b>93.9%</b>	<b>95.0%</b>	<b>96.2%</b>	<b>97.3%</b>	<b>97.1%</b>	<b>92.0%</b>	<b>95.9%</b>

**Greatest Confidence – 1<sup>st</sup> 5-yrs**

Reminder that 100% utilization means the building is at its operational target of 21 students per available classroom. This represents 87.5% of the maximum capacity.

- Overall utilization increases to about 97% of operational target by the 2031-32 school year.
- Balanced utilization across all schools (all schools averaging +/- 5% of districtwide average over the first 5 years).
- No schools exceed operational target over the first five years. Both Burr and Holland Hill slightly exceed 100% of operational target over the later years of the projections.
  - Enrollment growth at both schools dependent on planned housing developments moving forward.



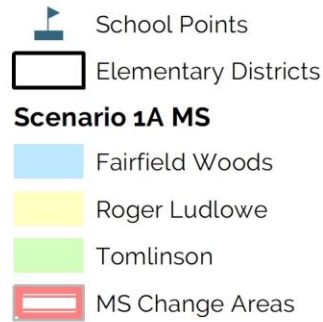
# Scenario 1A

## Potential Changes to Middle School Feeder Pattern

Changes made to maintain walking community around Fairfield Woods and improve proximity



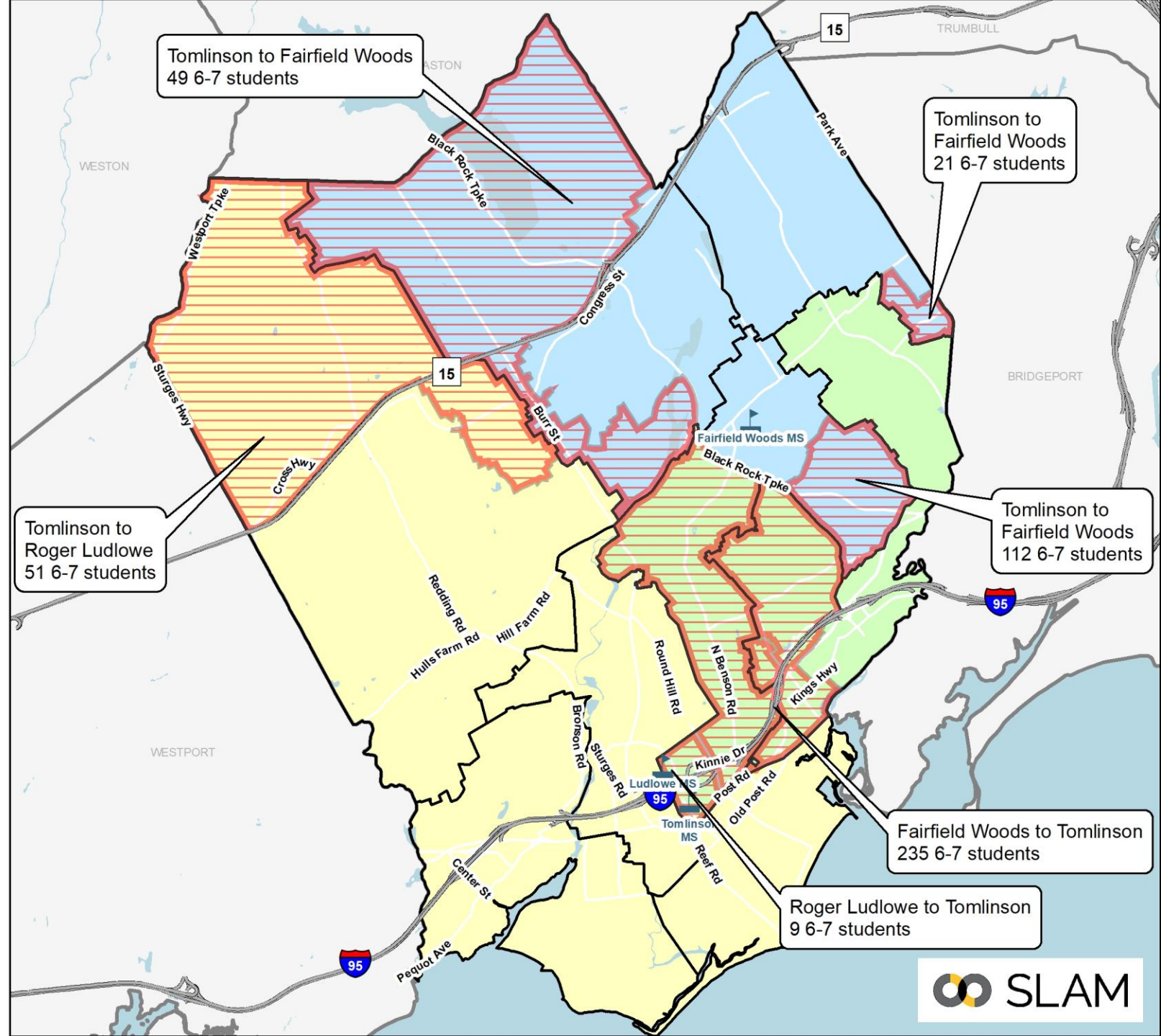
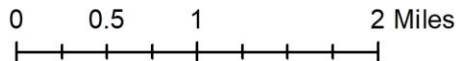
## Scenario 1A MS Boundaries



### Redistricting Impacts (6-7):

- **Modified Feeder Pattern. Burr and McKinley shift to Fairfield Woods while Osborn Hill and Holland Hill shift to Tomlinson.**
- ~23% of middle school students would be impacted (shown on map).
- Impacts could be reduced with grandfathering

Note: All students were returned to their zoned schools

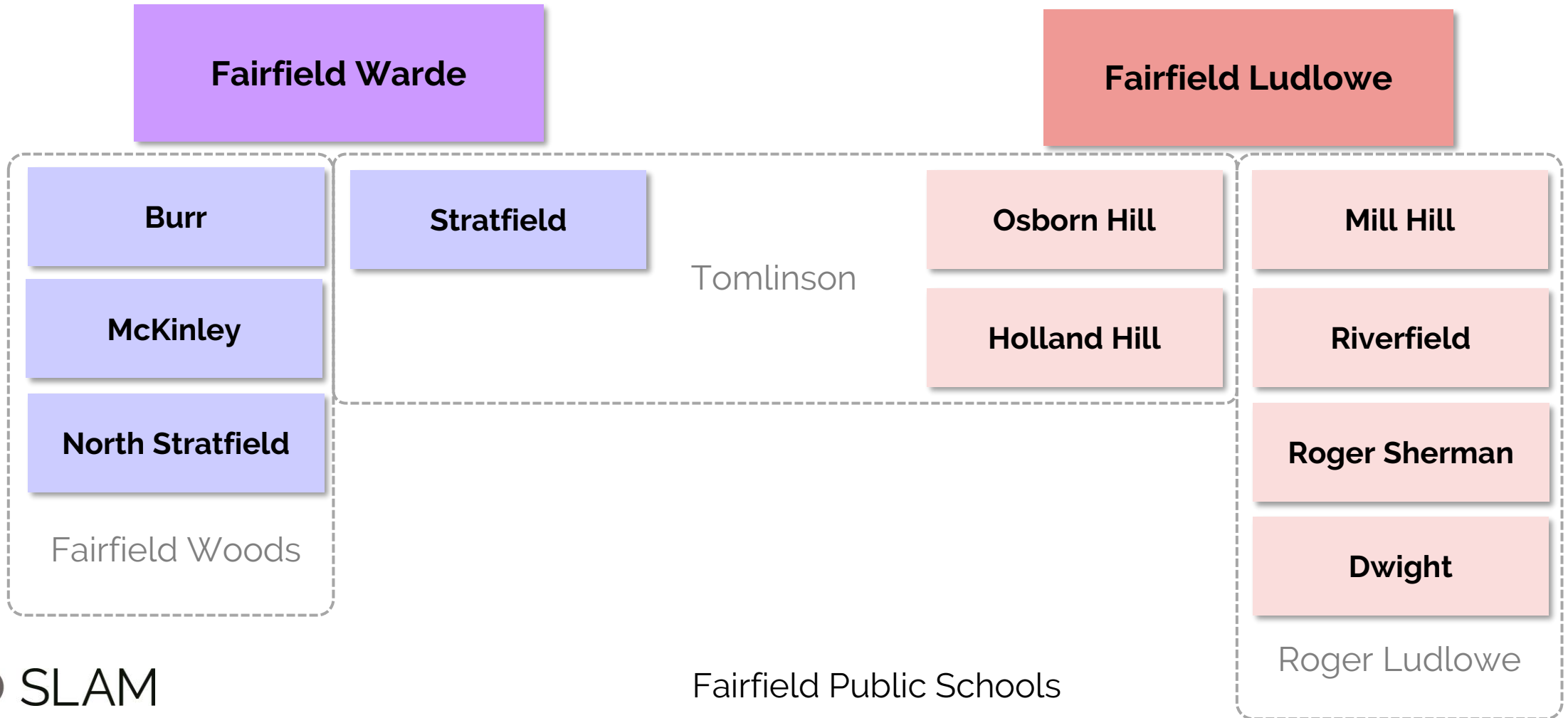




# Scenario 1A



## Potential Changes to High School Feeder Pattern

No changes to High School feeder patterns. Tomlinson still "split" between Fairfield Warde and Fairfield Ludlowe

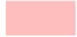





## Scenario 1A HS Boundaries

-  School Points
-  Elementary Districts

### Scenario 1A High School Boundaries

-  Fairfield Ludlow
-  Fairfield Warde
-  HS Change Areas

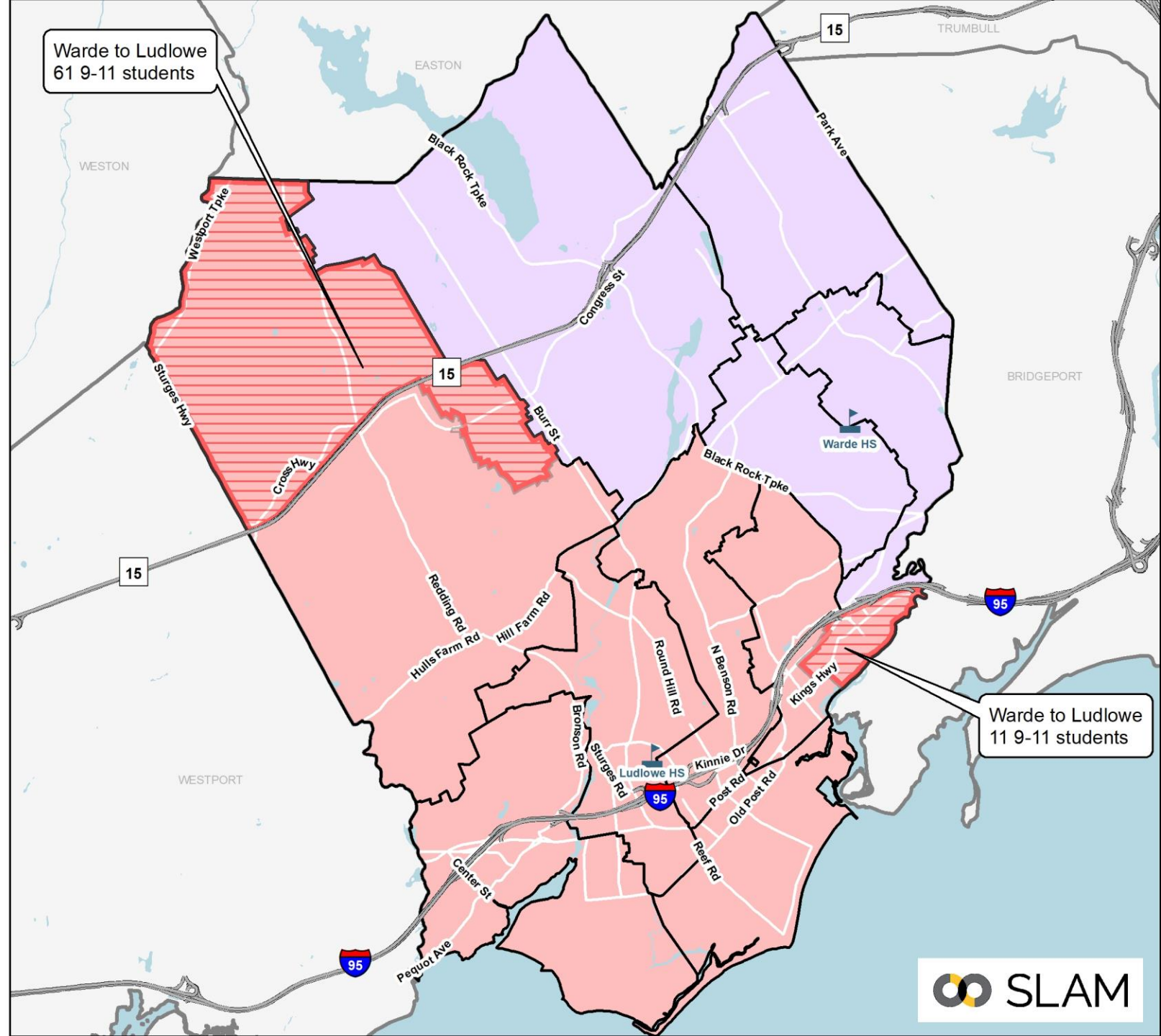
**Maintains current feeder pattern based on modified elementary boundaries**

### Redistricting Impacts (9-11):

- Would impact ~4% of high school students
- Impacts could be reduced with grandfathering

*Note: All students were returned to their zoned schools*

0 0.5 1 2 Miles





# Scenario 1A: Projected MS & HS Enrollment

Middle Projections by School (Medium)

MS School	22-23	23-24	24-25	25-26	26-27	27-28	28-29	29-30	30-31	31-32	32-33	5-year Δ	10-year Δ
Fairfield Woods	654	638	636	674	687	716	679	701	680	708	720	9.5%	10.1%
Roger Ludlowe	829	797	776	757	762	794	793	785	759	760	784	-4.2%	-5.4%
Tomlinson	650	623	620	620	646	672	706	703	688	665	683	3.4%	5.1%

High Projections by School (Medium)

HS School	22-23	23-24	24-25	25-26	26-27	27-28	28-29	29-30	30-31	31-32	32-33	5-year Δ	10-year Δ
Fairfield Warde	1,307	1,261	1,189	1,164	1,101	1,094	1,094	1,112	1,175	1,192	1,197	-16.3%	-8.4%
Fairfield Ludlowe	1,609	1,622	1,548	1,534	1,484	1,453	1,447	1,442	1,506	1,487	1,478	-9.7%	-8.1%
Alternative HS	66	66	66	66	66	66	66	66	66	66	66	0.0%	0.0%

- Roger Ludlowe projected to be the largest of the three middle schools, although gap is projected to decrease as enrollment grows at Fairfield Woods and Tomlinson.
  - Cohort sizes generally in the 200 to 275 students per grade in all three middle schools.
- Closure of Jennings results in uneven projected enrollment in the High Schools, with Fairfield Ludlowe averaging over 300 students larger than Fairfield Warde.





# Scenario 1A: Considerations

- Would address racial imbalance at McKinley with no schools exceeding 18% of districtwide average over the last seven years.
- Would balance utilization across all schools, with no schools exceeding 100% of operational capacity and all schools within ~5% of districtwide average over the next five years.
- Jennings is an advantageous site for Pre-K Center due to central location and available ground floor classrooms. Requires detailed facility study.
  - Provides ample space for program expansion in the future.
- Would impact ~18% of elementary students, including all of Jennings.
- Loss of walker community around Jennings, although some of these students can walk to McKinley.
- MS Feeder Pattern modified to retain walking community around Fairfield Woods,
  - Results in impacts to ~23% of middle school students.
- No changes to HS Feeder Pattern, although would shift additional students into Fairfield Ludlowe (would become over 300 students larger than Fairfield Warde)

Objective	Description	Score
<b>Address Racial Imbalance</b>	All schools less than 20% of districtwide average over the last five years.	Good
<b>Balance Utilization Across all Elementary Schools</b>	All schools within ~5% of districtwide average over next 5 years. No school over 100% of operational capacity.	Good
<b>Minimize Redistricting Impacts</b>	18% of elementary students	Fair
<b>Student Walker Impacts</b>	Net impacts to ~5% of walking ES students. Some impacted walkers can walk to new school.	Good
<b>Secondary School Impacts</b>	<p><b>Modified MS feeder pattern</b> No changes to HS feeder</p> <p>23% of MS students impacted 4% of HS students impacted</p>	



# Scenario 1B: Eliminated

## **Dwight is less advantageous as a Pre-K Center compared to Jennings:**

- Does not address racial balance in a sustainable manner – would result in McKinley and Holland Hill exceeding 20% of district average and approaching 25% imbalance.
- Isolated location relative to PK student population compared to centrally located Jennings.
- No accessible ground floor classrooms at Dwight – would likely require more substantial investments compared to Jennings, which has some accessible ground floor classrooms.

## **Other considerations:**

- Repurposing Dwight would result in greater high school impacts but fewer impacts to middle schoolers (no change in feeder pattern).
- Reducing to ten elementary schools, impacts enrollment balance at the middle and high schools.
- Repurposing a school results in districtwide elementary utilization of 97% of operational target over the final two years of the projections.
  - While slightly below the 100% operational target, this provides less flexibility to respond to enrollment bubbles, unforeseen residential development, or to provide space for educational programs as needs arise.



# Scenario 2: Eliminated

Scenario 2 used the satellite zone approach while striving for maximum utilization balance. This resulted in greater redistricting impact than Scenario 3 and was therefore eliminated.



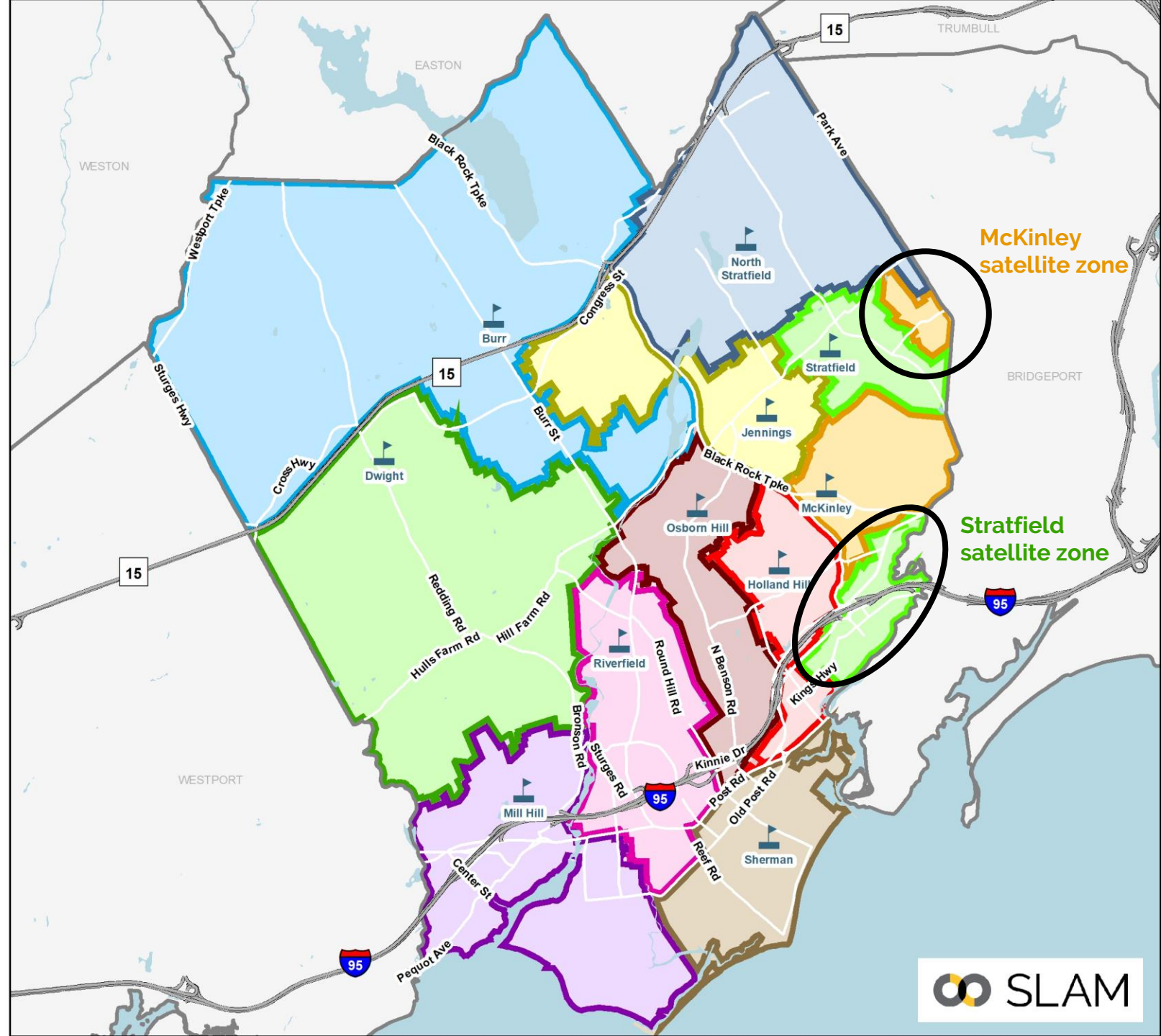
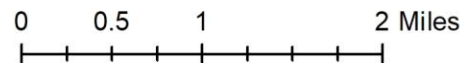
# Scenario 3

- Maintain 11 elementary school configuration
- Move as few students as possible while providing racial balance across all elementary schools.
  - Focus redistricting on areas within existing middle school and high school feeders.
  - Minimize impacts to walkers
- Provide space for expanded special programs
  - Grow Pre-K classrooms in elementary schools from 4 to 9 classrooms
  - Pre-K located in Holland Hill, Stratfield, and Jennings.
  - Shift Early Literacy Academy from McKinley to Burr to leverage available space.

### Scenario 3 Elementary Districts

- |   |  |
|---|--|
|  Burr         |  North Stratfield |
|  Dwight       |  Osborn Hill      |
|  Holland Hill |  Riverfield       |
|  Jennings     |  Roger Sherman    |
|  McKinley     |  Stratfield       |
|  Mill Hill    |  School Points    |

Two satellite zones created in McKinley and Stratfield to address racial and utilization balance.





### Scenario 3 Elementary Change Areas



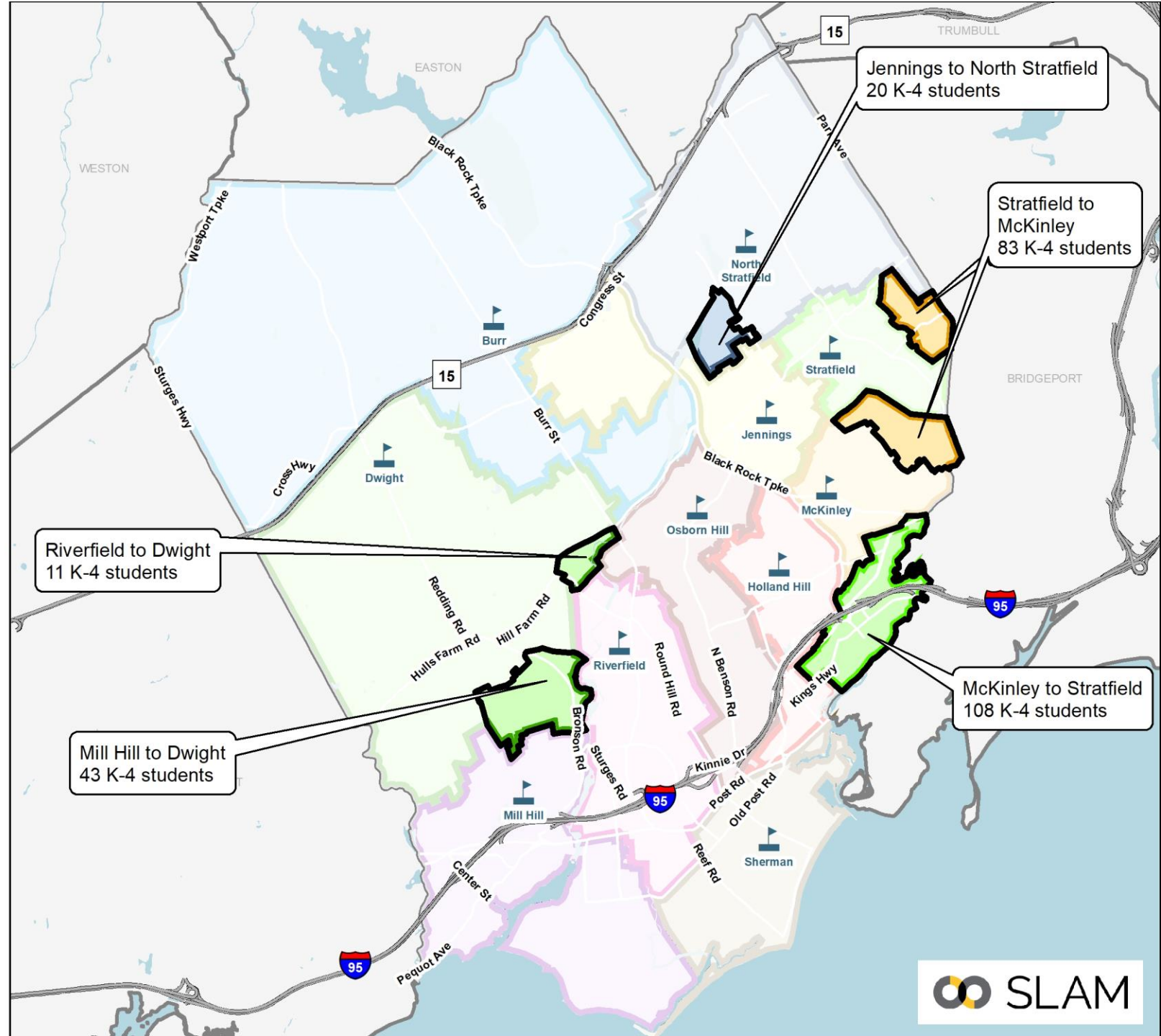
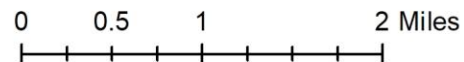
### Redistricting Impacts (K-4):

- ~9% of elementary students
- Several small “pocket” areas moved

### Greatest Share of Impacts to:

- McKinley: 33% of total impact
- Stratfield: 25% of total impact
- Mill Hill: 14% of total impact

*Note: All students were returned to their zoned schools*





# Scenario 3: Programs & Utilization

School	Capacity & Programs						Enrollment & Utilization (22-23)		
	Total Full-Sized CRs	K-5 Instruction	CLC	Early Literacy Academy	Therapeutic Learning Centers	ECC	K-5 Operational Capacity	Scenario 3 Enrollment	Scenario 3 Utilization
Burr	28	19	2	3	0	0	399	301	75.4%
Dwight	21	18	0	0	0	0	378	314	83.1%
Holland Hill	27	21	0	0	0	3	441	379	85.9%
Jennings	23	13	2	0	0	3	273	246	90.1%
McKinley	30	24	0	0	0	0	504	419	83.1%
Mill Hill	25	19	2	0	0	0	399	347	87.0%
North Stratfield	28	24	0	0	0	0	504	463	91.9%
Osborn Hill	30	22	2	0	0	0	462	434	93.9%
Riverfield	27	21	1	0	2	0	441	372	84.4%
Roger Sherman	25	22	0	0	0	0	462	397	85.9%
Stratfield	27	21	0	0	0	3	441	366	83.0%
<b>Total All Schools</b>	<b>291</b>	<b>224</b>	<b>9</b>	<b>3</b>	<b>2</b>	<b>9</b>	<b>4,704</b>	<b>4,038</b>	<b>85.8%</b>

- Overall utilization of 85.8%, with all schools between 75%-92%, with lowest utilization at Burr.
- Pre-K classrooms located at Holland Hill, Jennings, and Stratfield.
- Early Literacy Academy shifted from McKinley to Burr (helps offset lower enrollment at Burr).



# Scenario 3: Racial Balance

- All schools in compliance with state racial balance law.
- No school exceeds 20% of districtwide average at any point over the last seven years.
- Holland Hill, McKinley, and Stratfield would have been impending imbalance at some point over the last 7 years, **but never would have exceeded 19% of districtwide average.**

## Scenario 3 Racial Balance: 7-Year Look Back

School	2016-17	2017-18	2018-19	2019-20	2020-21	2021-22	2022-23
Burr	-8.1%	-7.1%	-8.1%	-5.2%	-6.6%	-3.1%	-3.1%
Dwight	-9.6%	-12.0%	-9.6%	-10.6%	-9.3%	-10.9%	-11.4%
Holland Hill	16.2%	16.0%	15.1%	13.4%	13.4%	16.1%	15.0%
Jennings	-2.6%	0.7%	0.0%	1.1%	-0.3%	-1.0%	1.3%
McKinley	15.2%	13.9%	14.6%	15.1%	18.3%	16.9%	15.3%
Mill Hill	-4.2%	-3.6%	-5.3%	-4.5%	-3.8%	-5.3%	-5.7%
North Stratfield	1.2%	0.6%	0.8%	-0.9%	-1.7%	-2.4%	-3.0%
Osborn Hill	-8.7%	-6.4%	-5.4%	-4.8%	-3.8%	-4.9%	-5.8%
Riverfield	-9.9%	-9.6%	-9.3%	-8.8%	-9.3%	-7.1%	-7.9%
Roger Sherman	-9.9%	-10.2%	-10.1%	-12.1%	-13.4%	-13.5%	-10.9%
Stratfield	15.0%	13.2%	12.1%	13.3%	12.1%	12.1%	14.3%
<b>K-5 Total</b>	<b>0.0%</b>	<b>0.0%</b>	<b>0.0%</b>	<b>0.0%</b>	<b>0.0%</b>	<b>0.0%</b>	<b>0.0%</b>

Impending Imbalance

Racially Imbalanced





# Scenario 3: Projected Utilization

School	22-23	23-24	24-25	25-26	26-27	27-28	28-29	29-30	30-31	31-32	32-33	1st 5 Year Avg	2nd 5 Year Avg
Burr	75.4%	77.4%	78.7%	78.2%	82.0%	81.2%	83.5%	84.5%	86.7%	88.0%	88.2%	<b>79.5%</b>	<b>86.2%</b>
Dwight	83.1%	82.0%	83.1%	81.7%	82.5%	83.1%	84.4%	84.7%	86.0%	86.5%	86.2%	<b>82.5%</b>	<b>85.6%</b>
Holland Hill	85.9%	88.2%	90.2%	90.7%	93.4%	93.7%	92.5%	93.7%	94.3%	95.9%	95.5%	<b>91.2%</b>	<b>94.4%</b>
Jennings	90.1%	92.3%	93.4%	93.0%	94.1%	93.4%	94.1%	95.2%	96.3%	97.8%	97.1%	<b>93.3%</b>	<b>96.1%</b>
McKinley	83.1%	85.9%	85.5%	85.5%	86.5%	87.5%	87.7%	88.3%	89.7%	90.7%	90.5%	<b>86.2%</b>	<b>89.4%</b>
Mill Hill	87.0%	87.5%	86.5%	88.2%	88.5%	89.0%	89.2%	90.2%	91.7%	92.5%	92.5%	<b>87.9%</b>	<b>91.2%</b>
North Stratfield	91.9%	91.9%	93.7%	92.7%	94.2%	93.3%	97.0%	97.6%	98.6%	99.2%	99.2%	<b>93.1%</b>	<b>98.3%</b>
Osborn Hill	93.9%	96.3%	98.1%	98.3%	100.4%	98.7%	96.8%	98.1%	98.9%	100.0%	100.0%	<b>98.4%</b>	<b>98.7%</b>
Riverfield	84.4%	84.4%	84.4%	85.7%	89.1%	86.4%	87.1%	87.8%	88.2%	89.3%	89.3%	<b>86.0%</b>	<b>88.3%</b>
Roger Sherman	85.9%	88.1%	88.3%	87.7%	86.4%	89.0%	89.2%	90.7%	91.6%	92.6%	92.2%	<b>87.9%</b>	<b>91.3%</b>
Stratfield	83.0%	86.6%	82.3%	84.4%	84.4%	85.7%	88.7%	90.9%	93.0%	94.3%	94.1%	<b>84.7%</b>	<b>92.2%</b>
<b>Total</b>	<b>85.8%</b>	<b>87.4%</b>	<b>87.7%</b>	<b>87.9%</b>	<b>89.3%</b>	<b>89.2%</b>	<b>90.1%</b>	<b>91.1%</b>	<b>92.3%</b>	<b>93.4%</b>	<b>93.2%</b>	<b>88.3%</b>	<b>92.0%</b>

Reminder that 100% utilization means the building is at its operational target of 21 students per available classroom. This represents 87.5% of the maximum capacity.

### Greatest Confidence – 1<sup>st</sup> 5-yrs

- Overall utilization increases to about 93% of operational target by the 2031-32 school year.
- Over the next five years, Burr and Dwight are more than 5% lower than districtwide average while Osborn Hill averages ~10% higher than districtwide average. Utilization balance improves over the final five years.
- Osborn Hill to operate at or near operational target for the duration of the projections, but never exceeds 101%.

## Scenario 3 MS Boundaries

### Scenario 3 MS

-  Fairfield Woods
-  Roger Ludlowe
-  Tomlinson
-  School Points
-  Scenario 3 Change Areas
-  Elementary Districts

**Maintains current feeder pattern and attendance zones.**

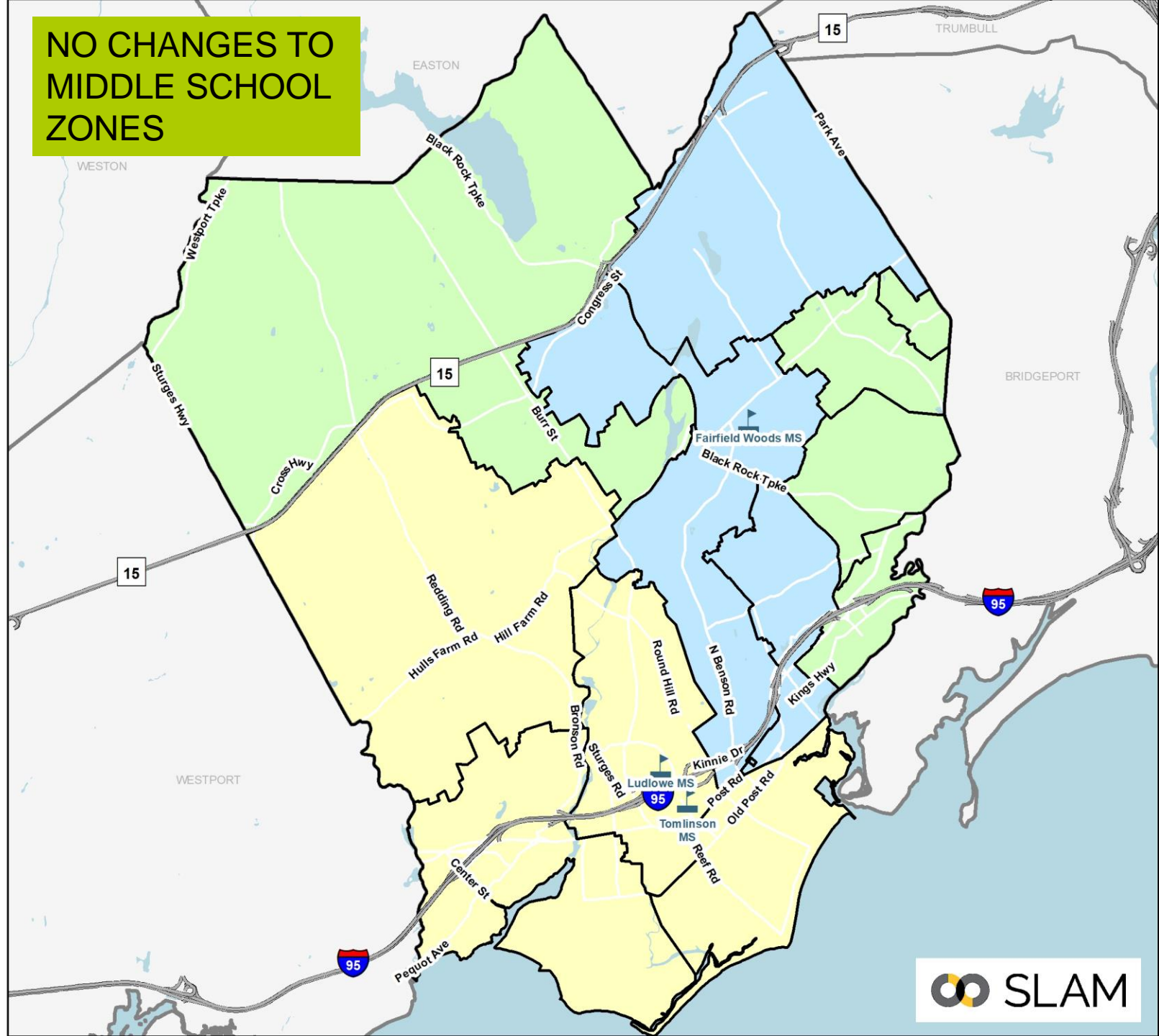
**No redistricting impacts to middle school students.**

**No Grandfathering Required**

Changes to elementary attendance zones only shifts students within existing middle school feeders.

*Note: All students were returned to their zoned schools*

0 0.5 1 2 Miles



## Scenario 3 HS Boundaries

### Scenario 3 High School Boundaries

-  Fairfield Ludlowe
-  Fairfield Warde
-  School Points
-  HS Change Areas
-  Elementary Districts

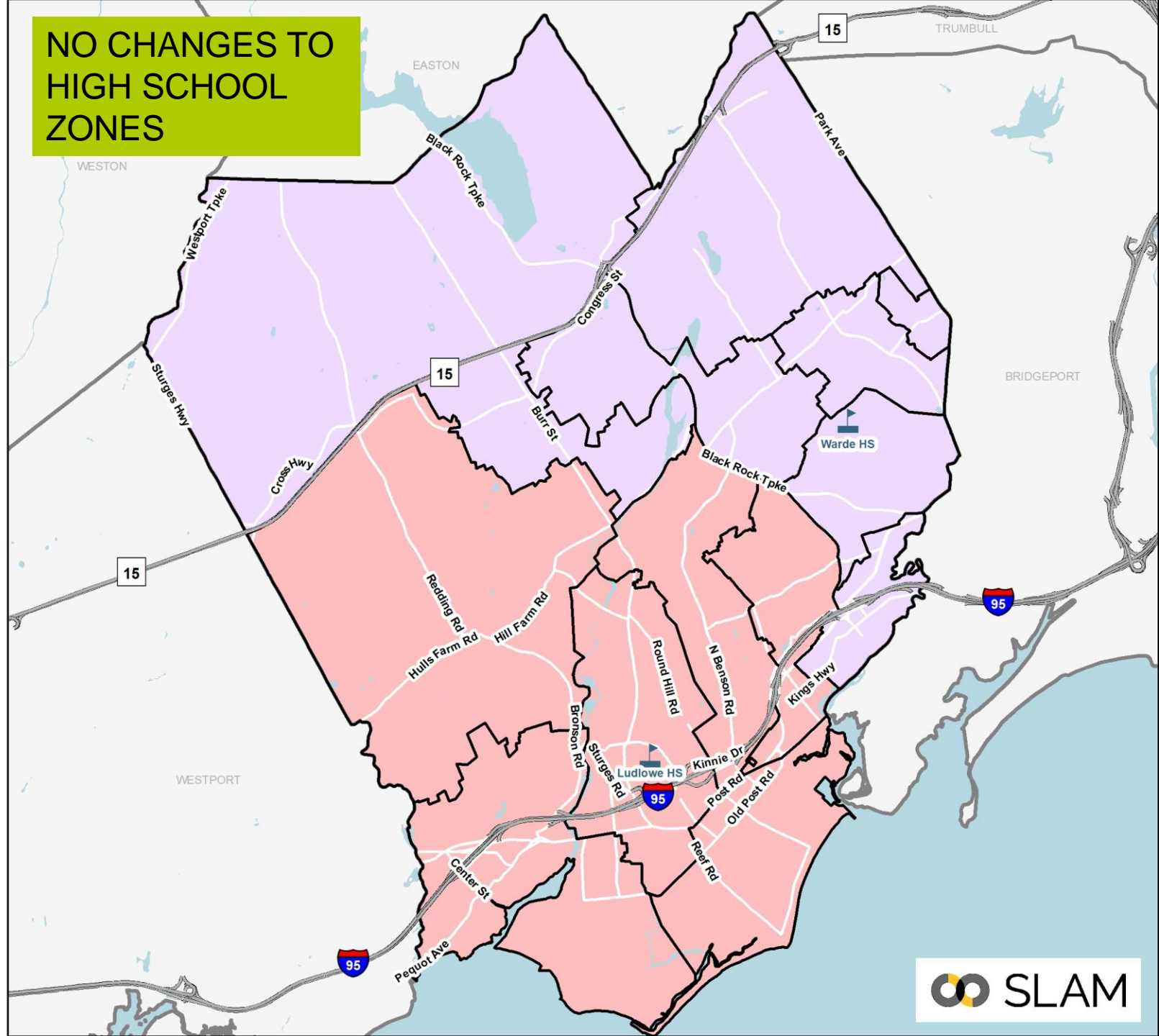
**Maintains current feeder pattern and attendance zones**

**No redistricting impacts to high school students.**

**No Grandfathering Required**

Changes to elementary attendance zones only shift students within existing high school feeders.

0 0.5 1 2 Miles





# Scenario 3: Projected MS & HS Enrollment

Middle Projections by School (Medium)

MS School	22-23	23-24	24-25	25-26	26-27	27-28	28-29	29-30	30-31	31-32	32-33	5-year Δ	10-year Δ
Fairfield Woods	749	740	734	776	783	854	851	869	830	830	851	14.0%	13.6%
Roger Ludlowe	771	747	734	723	723	744	746	740	722	724	743	-3.5%	-3.6%
Tomlinson	613	570	564	552	589	584	581	580	575	579	593	-4.7%	-3.3%

High Projections by School (Medium)

HS School	22-23	23-24	24-25	25-26	26-27	27-28	28-29	29-30	30-31	31-32	32-33	5-year Δ	10-year Δ
Fairfield Warde	1,400	1,371	1,309	1,306	1,233	1,222	1,223	1,226	1,305	1,295	1,291	-12.7%	-7.8%
Fairfield Ludlowe	1,516	1,512	1,428	1,392	1,352	1,325	1,318	1,328	1,376	1,384	1,384	-12.6%	-8.7%
Alternative HS	66	66	66	66	66	66	66	66	66	66	66	0.0%	0.0%

- Fairfield Woods and Roger Ludlowe projected to be roughly similar sizes over the next few years, with Fairfield Woods growing to be the largest middle school over the later years of the projections
  - Cohort sizes range from ~260 to 300 at Fairfield Woods, ~240 to 260 at Roger Ludlowe, and ~200 to 220 at Tomlinson.
  - Large than average bubble class enters Fairfield Woods beginning in 2027-28.
- Fairfield Ludlowe projected to be ~100 students larger than Fairfield Warde.





# Scenario 3: Considerations

- Maintains 11 elementary school alignment.
- All schools would have complied with the state racial balance law over the last seven years, with no school exceeding 19% deviation
- Some schools deviate from districtwide utilization balance by up to 10% over the next five years (underutilized Burr).
  - Most schools are at or near operational target.
- Satellite zones minimize redistricting impacts but depart from the district's traditional neighborhood-based model.
- No impacts to middle and high school students. No grandfathering required.
- Minimal impacts to walking students. Impacts to walkers can likely be eliminated through scenario refinement
- Utilization balance could be improved with further "pocket" redistricting but would result in greater redistricting impacts.
- If FPS builds dedicated CLC or ECC spaces as part of future renovation projects at Dwight and Jennings, elementary redistricting impacts could be reduced further while hitting utilization targets.

Objective	Description	Score
<b>Address Racial Imbalance</b>	All schools less than 20% of districtwide average over the last five years.	Good
<b>Balance Utilization Across all Elementary Schools</b>	All schools within ~10% of districtwide average. Burr remains most underutilized	Fair
<b>Minimize Redistricting Impacts</b>	9% elementary students No impacts to middle or high school students	Good
<b>Student Walker Impacts</b>	Minimal impacts to walking areas (~1% of walking students impacted)	Good
<b>Secondary School Impacts</b>	No changes to MS feeder No changes to HS feeder  No redistricting impacts to MS or HS students No grandfathering necessary	



# Scenario 4

- Maintain 11 elementary school configuration
- Maintain contiguous districts (no satellite zones)
- Address racial imbalance at McKinley
- Balance utilization at all elementary schools
- Provide space for expanded special programs
  - Grow Pre-K classrooms in elementary schools from 4 to 9 classrooms
  - 3 Pre-K classrooms each located at Holland Hill, Jennings, and North Stratfield.
  - Early Literacy Academy shifted from McKinley to North Stratfield

## Scenario 4 Elementary Change Areas



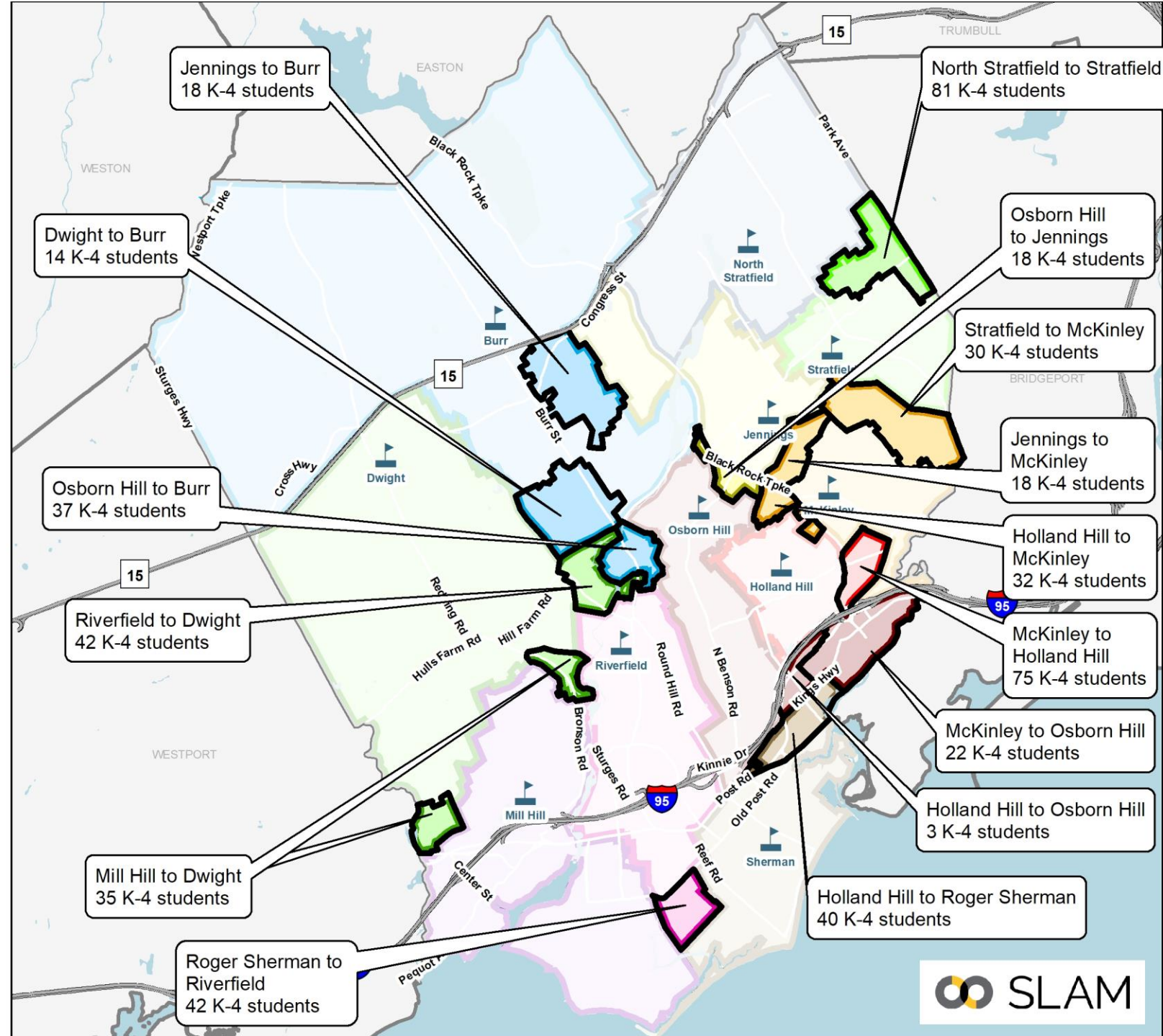
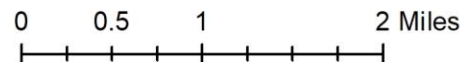
## Redistricting Impacts (K-4):

- ~15% of elementary students
- Several small "pocket" areas moved

## Greatest Share of Impacts to:

- McKinley: 19% of total impact
- N. Stratfield: 13% of total impact
- Holland Hill: 13% of total impact
- Osborn Hill: 11% of total impact

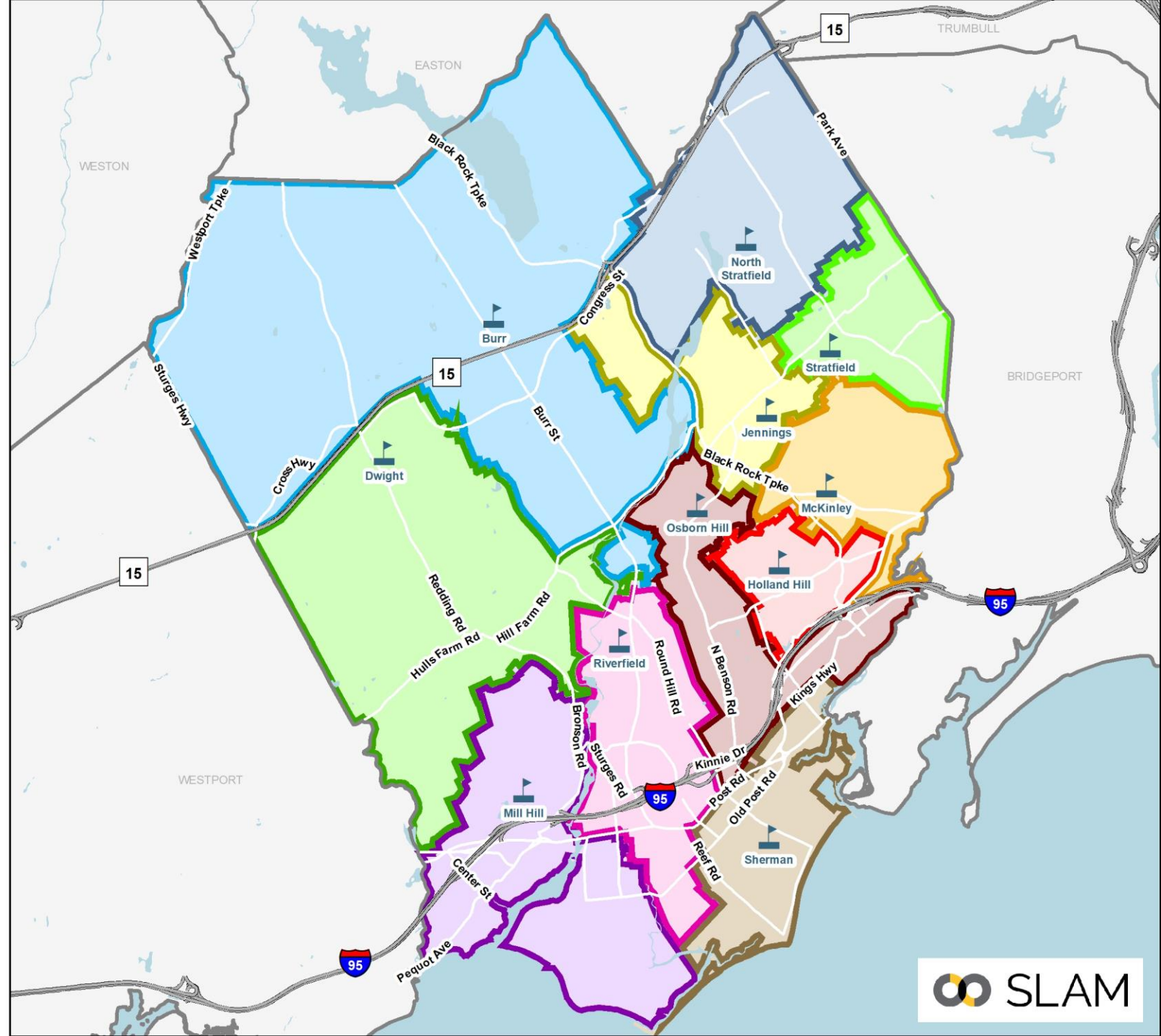
*Note: All students were returned to their zoned schools*





## Scenario 4 Elementary Districts

- |   |  |
|---|--|
|  Burr         |  North Stratfield |
|  Dwight       |  Osborn Hill      |
|  Holland Hill |  Riverfield       |
|  Jennings     |  Roger Sherman    |
|  McKinley     |  Stratfield       |
|  Mill Hill    |  School Points    |



0 0.5 1 2 Miles







# Scenario 4: Programs & Utilization

School	Capacity & Programs						Enrollment & Utilization (22-23)		
	Total Full-Sized CRs	K-5 Instruction	CLC	Early Literacy Academy	Therapeutic Learning Centers	ECC	K-5 Operational Capacity	Scenario 4 Enrollment	Scenario 4 Utilization
Burr	28	22	2	0	0	0	462	389	84.2%
Dwight	21	18	0	0	0	0	378	323	85.4%
Holland Hill	27	21	0	0	0	3	441	377	85.5%
Jennings	23	13	2	0	0	3	273	222	81.3%
McKinley	30	24	0	0	0	0	504	414	82.1%
Mill Hill	25	19	2	0	0	0	399	359	90.0%
North Stratfield	28	18	0	3	0	3	378	339	89.7%
Osborn Hill	30	22	2	0	0	0	462	421	91.1%
Riverfield	27	21	1	0	2	0	441	385	87.3%
Roger Sherman	25	22	0	0	0	0	462	396	85.7%
Stratfield	27	24	0	0	0	0	504	413	81.9%
<b>Total All Schools</b>	<b>291</b>	<b>224</b>	<b>9</b>	<b>3</b>	<b>2</b>	<b>9</b>	<b>4,704</b>	<b>4,038</b>	<b>85.8%</b>

- Overall utilization of 85.8%, with all schools within ~5% of districtwide average.
- Pre-K classrooms located at Holland Hill, Jennings, and North Stratfield.
- Early Literacy Academy shifted from McKinley to North Stratfield



# Scenario 4: Racial Balance

- All schools in compliance with state racial balance law.
- McKinley would have exceeded 20% deviation all seven years, ranging from 20.6% to 22.6%
- Holland Hill also in the impending imbalance category, ranging from 16.2% to 21.4% and would have exceeded 20% deviation for the last two years.

## Scenario 4 Racial Balance: 7-Year Look Back

School	2016-17	2017-18	2018-19	2019-20	2020-21	2021-22	2022-23
Burr	-8.8%	-8.4%	-9.3%	-6.7%	-8.1%	-4.6%	-5.0%
Dwight	-10.6%	-12.0%	-9.8%	-9.9%	-9.1%	-10.1%	-10.8%
Holland Hill	19.1%	16.2%	18.2%	19.1%	19.1%	21.4%	20.0%
Jennings	-2.6%	2.5%	2.2%	2.9%	1.6%	-1.8%	2.5%
McKinley	22.5%	22.6%	21.7%	21.0%	22.7%	21.4%	20.6%
Mill Hill	-4.4%	-3.7%	-4.7%	-4.9%	-4.1%	-6.0%	-6.0%
North Stratfield	0.9%	-0.2%	0.6%	-1.9%	-2.1%	-1.3%	-2.5%
Osborn Hill	-5.9%	-2.7%	-2.9%	-1.6%	-0.3%	-1.3%	-2.0%
Riverfield	-9.1%	-9.5%	-9.2%	-9.3%	-9.7%	-7.8%	-7.5%
Roger Sherman	-4.2%	-3.5%	-4.1%	-8.2%	-8.6%	-7.0%	-5.5%
Stratfield	0.3%	-2.0%	-4.2%	-3.1%	-4.5%	-6.1%	-5.2%
<b>K-5 Total</b>	<b>0.0%</b>	<b>0.0%</b>	<b>0.0%</b>	<b>0.0%</b>	<b>0.0%</b>	<b>0.0%</b>	<b>0.0%</b>

Impending Imbalance

Racially Imbalanced



# Scenario 4: Projected Utilization

School	22-23	23-24	24-25	25-26	26-27	27-28	28-29	29-30	30-31	31-32	32-33	1st 5 Year Avg	2nd 5 Year Avg
Burr	84.2%	86.1%	86.6%	85.9%	90.0%	90.5%	92.2%	92.9%	96.5%	96.8%	97.0%	<b>87.8%</b>	<b>95.1%</b>
Dwight	85.4%	84.9%	86.2%	85.7%	85.4%	85.2%	87.8%	89.4%	89.9%	91.0%	90.5%	<b>85.5%</b>	<b>89.7%</b>
Holland Hill	85.5%	88.2%	88.4%	89.3%	90.2%	90.2%	92.1%	93.4%	94.3%	95.9%	95.5%	<b>89.3%</b>	<b>94.2%</b>
Jennings	88.3%	89.7%	93.0%	91.6%	91.9%	89.4%	90.8%	91.9%	93.0%	94.5%	94.1%	<b>91.1%</b>	<b>92.9%</b>
McKinley	82.1%	86.9%	84.1%	83.7%	85.9%	86.3%	84.9%	85.9%	86.1%	87.1%	86.7%	<b>85.4%</b>	<b>86.2%</b>
Mill Hill	90.0%	90.5%	88.7%	89.7%	90.5%	91.2%	91.5%	92.5%	93.5%	94.7%	94.5%	<b>90.1%</b>	<b>93.3%</b>
North Stratfield	89.7%	89.9%	92.9%	91.3%	91.8%	92.3%	94.4%	96.0%	97.4%	98.9%	98.7%	<b>91.6%</b>	<b>97.1%</b>
Osborn Hill	87.0%	88.1%	90.0%	90.7%	92.6%	91.1%	90.0%	90.5%	91.3%	92.2%	92.2%	<b>90.5%</b>	<b>91.3%</b>
Riverfield	87.3%	87.3%	88.4%	89.1%	93.7%	90.2%	89.6%	90.9%	92.3%	93.0%	93.2%	<b>89.8%</b>	<b>91.8%</b>
Roger Sherman	85.7%	87.2%	87.0%	89.2%	88.3%	91.8%	94.2%	95.9%	97.6%	98.3%	98.3%	<b>88.7%</b>	<b>96.8%</b>
Stratfield	81.9%	84.1%	82.9%	83.3%	83.7%	84.3%	85.3%	85.3%	85.9%	87.5%	87.3%	<b>83.7%</b>	<b>86.3%</b>
<b>Total</b>	<b>85.8%</b>	<b>87.4%</b>	<b>87.7%</b>	<b>87.9%</b>	<b>89.3%</b>	<b>89.2%</b>	<b>90.1%</b>	<b>91.1%</b>	<b>92.3%</b>	<b>93.4%</b>	<b>93.2%</b>	<b>88.3%</b>	<b>92.0%</b>

## Greatest Confidence – 1<sup>st</sup> 5-yrs

- Overall utilization increases to about 93% of operational target by the 2031-32 school year.
- Over the next five years, all schools average +/-5% of districtwide utilization
- No schools projected to exceed 100% of their operational target over the next ten years.

Reminder that 100% utilization means the building is at its operational target of 21 students per available classroom. This represents 87.5% of the maximum capacity.

## Scenario 4 MS Boundaries

### Scenario 4 MS

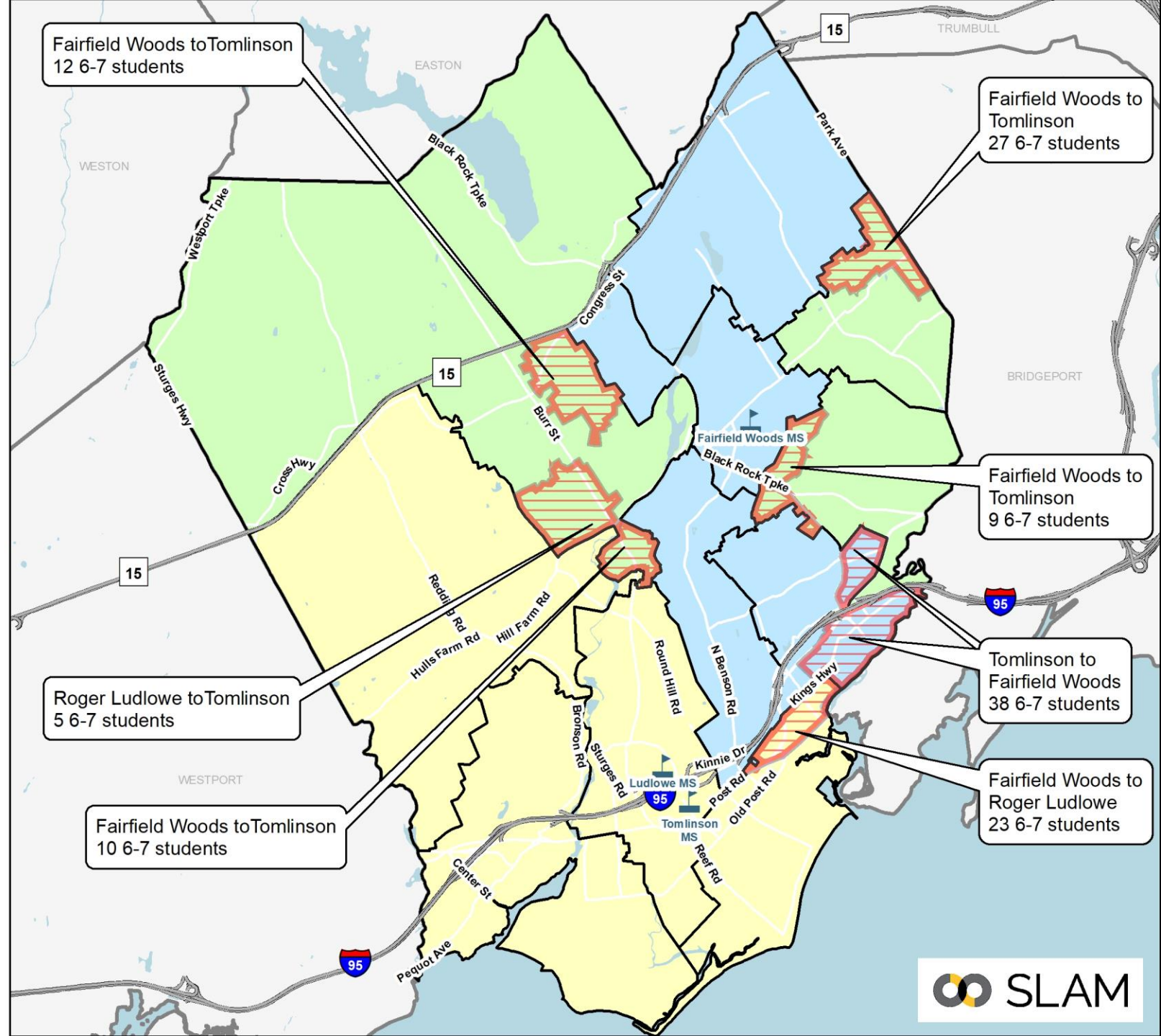
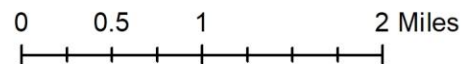
- Fairfield Woods
- Roger Ludlowe
- Tomlinson
- School Points
- Scenario 4 Change Areas
- Elementary Districts

**Maintains current feeder pattern based on modified elementary boundaries**

### Redistricting Impacts (6-7):

- About 7% of middle school students would be impacted,
- Impacts could be reduced with grandfathering

*Note: All students were returned to their zoned schools*





## Scenario 4 HS Boundaries

### Scenario 4 High School Boundaries

-  Fairfield Ludlowe
-  Fairfield Warde
-  School Points
-  HS Change Areas
-  Elementary Districts

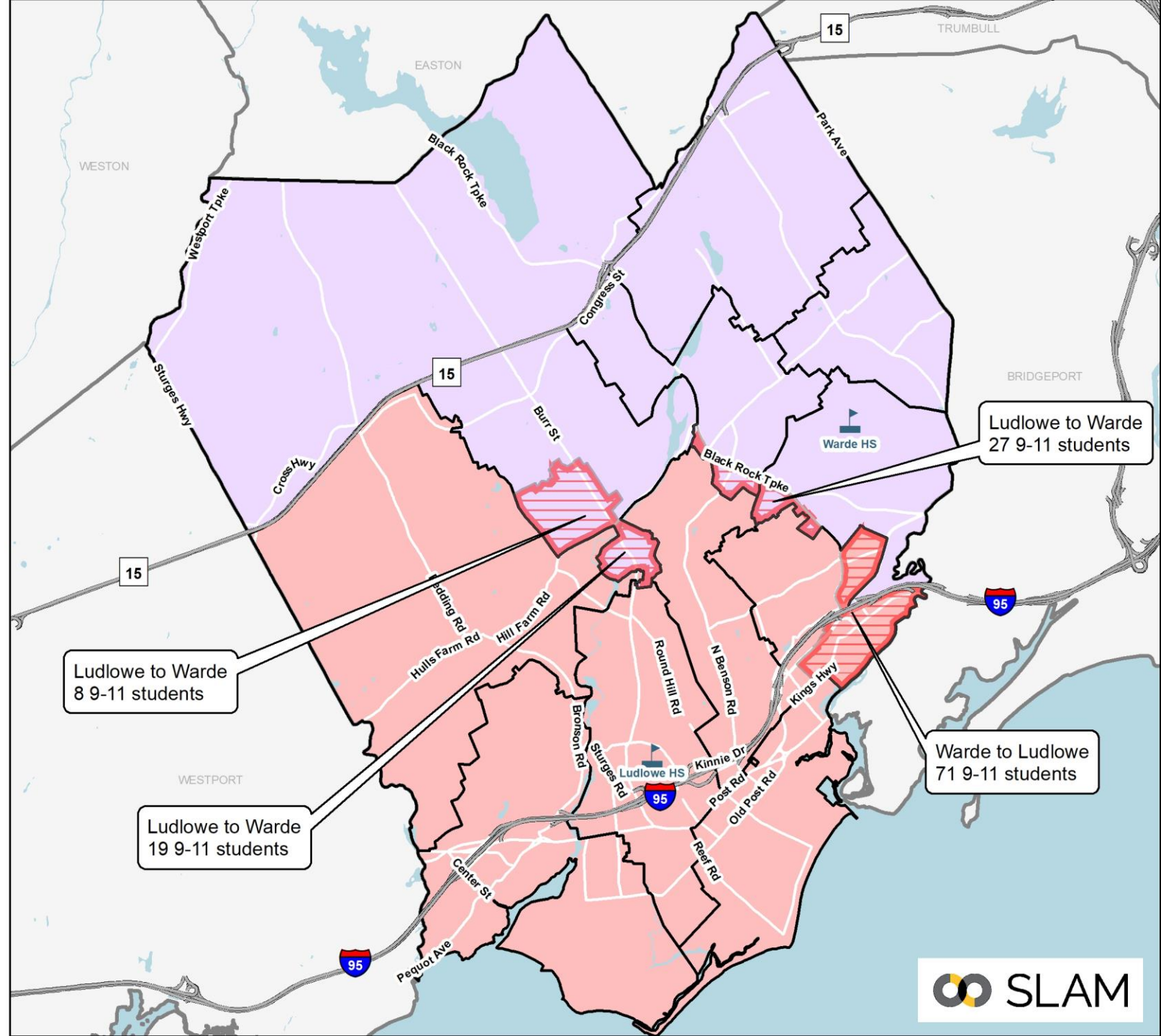
**Maintains current feeder pattern based on modified elementary boundaries**

### Redistricting Impacts (9-11):

- Would impact ~5% of high school students
- Impacts could be reduced with grandfathering

*Note: All students were returned to their zoned schools*

0 0.5 1 2 Miles







# Scenario 4: Projected MS & HS Enrollment

Middle Projections by School (Medium)

MS School	22-23	23-24	24-25	25-26	26-27	27-28	28-29	29-30	30-31	31-32	32-33	5-year Δ	10-year Δ
Fairfield Woods	659	660	654	696	713	774	757	759	726	738	756	17.5%	14.7%
Roger Ludlowe	792	771	756	733	735	759	770	762	746	750	773	-4.2%	-2.4%
Tomlinson	682	627	622	622	647	649	651	668	655	645	658	-4.8%	-3.5%

High Projections by School (Medium)

HS School	22-23	23-24	24-25	25-26	26-27	27-28	28-29	29-30	30-31	31-32	32-33	5-year Δ	10-year Δ
Fairfield Warde	1,388	1,348	1,285	1,272	1,206	1,196	1,202	1,199	1,277	1,277	1,264	-13.8%	-8.9%
Fairfield Ludlowe	1,528	1,535	1,452	1,426	1,379	1,351	1,339	1,355	1,404	1,402	1,411	-11.6%	-7.7%
Alternative HS	66	66	66	66	66	66	66	66	66	66	66	0.0%	0.0%

- Shifts additional students from Tomlinson to Roger Ludlowe, resulting in varying enrollment at middle schools.
  - Cohort sizes range from ~290 to 320 at Roger Ludlowe, ~260 to 290 at Fairfield Woods, and ~140 to 160 at Tomlinson.
  - Large bubble class enters Fairfield Woods beginning in 2027-28.
- Shifts additional students into Fairfield Ludlowe, which is projected to average ~150 students more than Fairfield Warde



# Scenario 4: Considerations

- Maintains 11 elementary school alignment.
- All schools would have complied with the state racial balance law over the last seven years, although McKinley and Holland Hill would each exceed 20% deviation multiple years.
  - Consistent with prior redistricting exercises from 2016 and 2020, where you cannot consistently get racial imbalance below 20% while maintaining contiguous attendance zones.
- Would balance utilization, with all schools within ~5% of districtwide average over the next five years.
- Retains contiguous neighborhood-based attendance zones, but results in greater redistricting impacts compared to satellite zone approach.
- Redistricting impacts to ~7% of middle school students and ~5% of high school students.
- Net impacts to ~6% of elementary walkers.

Objective	Description	Score
<b>Address Racial Imbalance</b>	McKinley and Holland Hill racially balanced, but exceed 20% in one or more years	Fair
<b>Balance Utilization Across all Elementary Schools</b>	All schools within 5% of districtwide average for the first 5 years of the projections	Good
<b>Minimize Redistricting Impacts</b>	15% of elementary students	Fair
<b>Student Walker Impacts</b>	Net impacts to ~6% of elementary walkers. Some impacted walkers can walk to new schools.	Fair
<b>Secondary School Impacts</b>	No changes to MS feeder No changes to HS feeder  7% of MS students impacted 5% of HS students impacted	



# Summary of Best Performing Scenarios

	Repurpose Facility as an ECC	Satellite Zones	Traditional Redistricting
Objective	Scenario 1A	Scenario 3	Scenario 4
Scenario Description	Repurpose Jennings as an ECC	Satellite Zones, minimize disruption	Traditional redistricting, balanced utilization
Address Racial Imbalance	<b>Good</b> All schools less than 20% of districtwide average over the last five years.	<b>Good</b> All schools less than 20% of districtwide average over the last five years.	<b>Fair</b> McKinley and Holland Hill racially balanced, but exceed 20% in one or more years
Balance Utilization Across all Elementary Schools (next 5-year average)	<b>Good</b> All schools within 5% of districtwide average over next 5 years. No school over 100% of operational capacity.	<b>Fair</b> Most schools within 5% of districtwide average. Underutilized Burr (~10% lower than district average)	<b>Good</b> All schools within 5% of districtwide average over next 5 years. No school over 100% of operational capacity.
Minimize Redistricting Impacts	<b>Fair</b> 18% of ES students	<b>Good</b> 9% of ES students	<b>Fair</b> 15% of ES students
Student Walker Net Impacts	<b>Good</b> Net impacts to ~5% of elementary walkers. Preserves Fairfield Woods walking community	<b>Good</b> Impacts to ~1% of elementary walkers.	<b>Fair</b> Net impacts to ~6% of elementary walkers
Secondary School Impacts	<b>Modified MS feeder pattern</b> No changes to HS feeder  23% of MS students impacted 4% of HS students impacted	No changes to MS or HS feeder patterns  No redistricting impact for MS and HS students	No changes to MS or HS feeder patterns  7% of MS students impacted 5% of HS students impacted



# Timeline & Process

Jan – Feb 2023

- BOE Develops & Adopts "charge to consultant"
  - Scenario Planning Direction
  - Guiding Criteria to inform redistricting process

March - June

- Scenario Development
- Iterative planning process with administrative working group to review, discuss and obtain feedback.
- Revised options were evaluated, and pros/cons weighed
- 3 Viable options Presented to BOE

July - Aug

- Preferred Scenario Refinement
- FPS will analyze operational considerations for the preferred options

Sept – Oct

- SLAM will update options with 2023-24 enrollment
- Launch online interactive map viewer illustrating the proposed changes to attendance boundaries
- Presentations to BOE
- BOE Adoption

Nov - June

- FPS Implementation Planning
- Staffing Considerations
- Transportation Routing
- Mobilization

- Adopted Plan in place for 2024-25 school year.



# Discussion