

Elma High School Education Planner



Meaningful, Achievable, Flexible Education
~ Build Your Future ~

Class of 2027

Start High School: 2023-2024

Elma High School

1011 West Main

Elma, WA 98541

360.482.3121

Table of Contents:

General Information:	Page
Table of Contents	2
Welcome	3
Counseling Center	4
Ready, Set, Go	5
Are You Ready for High School?	5
High School Connecting Career & College Readiness	5
Portrait of an Elma Eagle	6
Equal Opportunity	7
School Responsibilities Related to Intimidation &/or Harassment	7
Make-up of Failed Classes	7
Withdrawal-Transfer from School	7
Certificate of Academic Recognition	7
Registration	8
Schedule	8
Homeroom/Advisory	8
Schedule Changes	8
What's My Plan	
Graduation: Flexible, Meaningful, Achievable	9
EHS: More than a HS Credit	10
College Credit (Dual Credit)	10
CTE Graduation Pathways	10
What's My Future Plan?	11
High School & Beyond Plan	12
Education Plan	
Elma High School Minimum Graduation Requirements	13
Four-Year College/University Graduation Requirements	14
Course Descriptions	
9th Grade Class Options	15
9th Grade Class Descriptions	16-18
Student Activities	
Co-Curricular Clubs & Organizations	19
Extra Curricular Clubs & Organizations	20
Who's Who Contact Information	21

Welcome to Elma High School

Connect your High School & Beyond Plan as you move through high school!

Elma High School offers a broad curriculum to provide you with a well-balanced educational experience in accordance with your interests, talents, and abilities.

This planner offers graduation criteria, course descriptions, club/activity information, and more for your review as you prepare for your 9th grade year.

You are encouraged to plan your schedule carefully, talk with your parents, and consult with your school counselor. Carefully read each course offering. Plan your schedule so that your own personal goals are met. The optimum educational experience will occur as a result of thoughtful planning which can lead to a successful future.

At this time, each high school student must earn 24 credits and meet at least one Graduation Pathway in order to graduate from a Washington State high school. You will find planners to help understand the courses required at Elma High School on pages 11 & 12.

For more information on credit requirements and Graduation Pathways, please refer to:

Graduation Pathways:
Washington Office of Superintendent of Public Instruction:

<https://www.k12.wa.us/student-success/graduation/graduation-requirements/graduation-pathways>

Credit Requirements:
Washington Office of Superintendent of Public Instruction:

<https://www.k12.wa.us/student-success/graduation/graduation-requirements/credit-requirements>

Our team of highly qualified staff are here to assist with the growth and direction for each student. High School is a time to create friendships, advance knowledge and skill, and explore career options in order to prepare for post-secondary training and more. We are excited to work with you as you develop your portfolio as a part of your High School and Beyond Plan.

Elma High School is a great place to learn, explore, and develop who you are. We are here to serve you as you take flight and soar into your bright, productive future.

Elma High School

1011 W. Main
Elma, WA 98541
(360) 482-3121

The Elma School District is an Equal Opportunity Employer. Students, families and other stakeholders are notified the district does not discriminate based on sex, race, creed, religion, color, age, national origin, sexual orientation, gender expression or identity, veteran or military status, disability, or the use of a trained dog guide or service animal in any programs or activities, and provides equal access to the Boy Scouts and other designated youth groups.

Designated to handle inquiries about nondiscrimination policies are:

Title IX Officer – Chris Nesmith, cnesmith@eagles.edu

504 Section Coordinator - Stacey Rockey, srockey@eagles.edu

Counseling Center

COUNSELING CENTER STAFF

Bobbi Smith, Counselor

Serve Last Name Students A-K
(360) 482-3121 ext. 3112
Direct Line: (360) 482-1058
bsmith@eagles.edu

TBD, Counselor

Serve Last Name Students L-Z
(360) 482-3121 ext. 3111
Direct Line: (360) 482-1057
@eagles.edu

Wendy Richmond

Registrar
(360) 482-3121 ext. 3110
wrichmond@eagles.edu

Counseling Center Hours:

The center is open 7:30 am to 4:00 pm daily

Crisis Hotline:

Columbia Wellness Emergency 24-Hour Response: 1-800-685-6556 or Local #: 360-532-4357

Arranging to See a Counselor:

Counselors are available 8:00 am to 3:30 pm

Our door is always open.

We are able to take care of most walk-ins and emergencies at any time.

However, we would appreciate pre-arranged appointments.

SERVICES AVAILABLE

Recordkeeping:

1. Gather information on progress reports.
2. Interpret transcripts and evaluate transfer students.
3. Prepare transcripts.
4. Check credits, grade point averages, class ranks.
5. Keep record of class size to balance class loads.

Testing:

1. Administer the Preliminary Scholastic Aptitude Test (P.S.A.T.) to interested college-bound juniors.
2. Provide information and dates of registration for college entrance testing—Scholastic Aptitude Test (SAT), American College Testing (ACT).
3. Provide information and test date for Armed Services Vocational Aptitude Battery (A.S.V.A.B.).
4. Interpret individual tests.
5. Assist with Achievement Testing.
6. Coordinate SBAC testing and assist in interpretation.

Personal Counseling:

1. Counsel with students in evaluating personal assets and limitations.
2. Counsel with students concerning personal decisions.
3. Provide information for use of community referral sources.
4. Provide the students an opportunity to talk through their problems.
5. Encourage individual problem solving by discussing alternatives.
6. Counsel students concerning learning difficulties.

Scheduling and Registration:

1. Assist students in selecting high school courses to fit needs.
2. Work with students during registration to help each student get the best possible schedule.
3. Correct errors in registration by helping students make appropriate class changes when necessary.
4. Schedule new students in classes.

Parents and Teachers:

1. Keep communications open with parents.
2. Plan and set up conferences involving parents, teachers and students.
3. Assist teachers with student referrals.
4. Assist teachers with proper placement of students according to learning needs.
5. Work with staff and administration concerning school problems.
6. Help with parent orientation of incoming freshmen.

College and Career Counseling/Guidance:

1. Provide information about colleges, vocational-technical institutes and community colleges.
2. Counsel students concerning career plans.
3. Provide college and career computer program searches for interested junior and senior students.
4. Provide information and direction on financial aid and scholarships available.

Ready, Set, Go!

Are You Ready for High School?

- ☐ Reflect Your Interests
- ☐ Reflect Career Interests
- ☐ Reflect Your Plan after HS
- ☐ Select HS Classes
- ☐ Finish Strong at EMS
- ☐ Contact Activity/Sport coaches for summer program information
- ☐ Get Your Physical for Sports
- ☐ Know Try Out Dates for Sports
- ☐ Know Sport Season Dates
- ☐ Parents Complete Registration in August
- ☐ Purchase ASB card & Yearbook

High School Connecting Career & College Readiness:

Stay on track to Graduate on Time:

- ☐ Earn 6 credits each year in high school for a total of 24
- ☐ Earn the required credits in all core areas
- ☐ One credit is one full year of a high school class

Work to be “Career Ready” during your high school career:

Career Cluster Identified & TWO or more of the following benchmarks:

- ☐ 90% Attendance
- ☐ 25 hours of Community Service
- ☐ Earn an Industry Recognized Credential
- ☐ Earn a Dual Credit in a CTE Course (high school & college credit)
- ☐ Participate in a Workplace Learning Experience
- ☐ Complete two classes in a CTE Graduation Pathway
- ☐ Be involved in two or more organized Co-Curricular Activities

Work to be “College Ready” during your high school career:

GPA 2.8 out of 4.0 and ONE or more of the following academic indicators:

- ☐ Enroll Dual Credit College English &/or Math (Earn: A, B, or C)
- ☐ Enroll Algebra II (Earn: A, B, or C)

Other Factors:

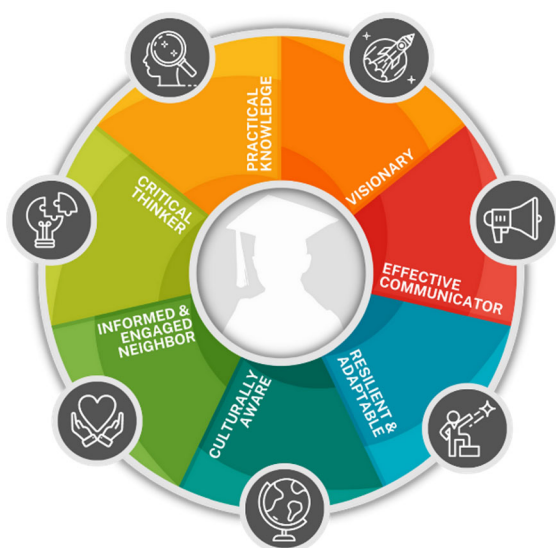
- ~Earning As, Bs, Cs
- ~FAFSA completion senior year
- ~College Academic Advising
- ~Enrollment in career pathway course sequence
- ~Senior year math class
- ~Completion of a math class after Algebra II

Standardized Testing Benchmarks: (minimum score)

Many universities are not requiring standardized tests

- ~SAT Exam: Math (530) | Reading and Writing (480)
- ~ACT Exam: English (18) | Reading (22) | Science (23) | Math (22)
- ~College Readiness Placement Assessment (determined by post-secondary institution)

Portrait of an Elma Eagle



Visionary

- Elma students will be confident in their unique skills and abilities.
- Elma students will have aspirations for life after high school.
- Elma students will be aware of the many different opportunities available and have the resources and support necessary to pursue whichever they choose.

Effective Communicators

- Elma students will be confident in their unique skills and abilities.
- Elma students will have aspirations for life after high school.
- Elma students will be aware of the many different opportunities available and have the resources and support necessary to pursue whichever they choose.

Informed & Engaged Neighbors



- Elma students will have the knowledge, courage, and desire to make a positive change on a local, national, and global level.
- Elma students will live with integrity and show compassion for others.
- Elma students will be positive and active neighbors.

Practical Knowledge



- Elma students will have the basic knowledge and life skills required to be successful in whichever post-secondary life path they choose.
- Elma students will be financially and technologically literate.
- Elma students will be capable of independently finding answers and solutions.
- Elma students will have the perseverance to learn new concepts.
- Elma students will continue to ask questions and search for answers.

Culturally Aware



- Elma students will be effective digital, written, and verbal communicators.
- Elma students will be capable of expressing their thoughts, ideas, and feelings.
- Elma students will have the confidence and skill to be self-advocates.

Critical Thinkers



- Elma students will have the skills to evaluate information to ensure its accuracy and relevance.
- Elma students will make constructive choices.
- Elma students will be problem solvers and innovators.
- Elma students will find creative solutions.

Resilient & Adaptable



- Elma students will be able to overcome adversity.
- Elma students will have the perseverance to reach their goals.
- Elma students will have the confidence to take risks, and keep trying.
- Elma students will be physically, mentally, and emotionally resilient.
- Elma students will have strong and healthy relationships.
- Elma students will be able to adapt and succeed in our ever-changing, complex world.

General Information

EQUAL EMPLOYMENT AND EDUCATIONAL OPPORTUNITIES

The Elma School District No. 68 complies with all federal and state rules and regulations and does not discriminate on the basis of ages, race, creed, color or national origin, gender, marital status or non-job related physical, sensory or mental handicap in its educational programs, activities, employment procedures and personnel practices as required by state and federal laws. Inquiries regarding compliance and/or grievance procedures may be directed to:

**Elma High School, 1235 Monte-Elma Rd., Elma, WA 98541
(360) 482-3121**

SCHOOL RESPONSIBILITIES RELATED TO INTIMIDATION AND/OR HARASSMENT:

Elma High School is a place of learning for all students. Staff has the responsibility to facilitate learning and students have the responsibility to be the very best learners they can be without impeding the needs or rights of others.

Intimidation, harassment, slurs, and profanity or other inappropriate acts will not be tolerated. In order for all of us to receive maximum benefit from our educational opportunities, we must all feel welcome and safe. Due to our own unique background and experiences in life, we may not always realize when we are offending another person. However, we are each responsible for our own behaviors. The quality of life at Elma High School is the responsibility of all of us. Therefore, if you feel you have been intimidated or harassed, please follow these steps:

1. Let the person offending you know that the behavior is unwanted. Try to do this in a mature, calm, and respectful manner that explains how you feel. Remember, you may be a victim even if the act is not directed at you.
2. Notify a staff member. If you feel the offense is serious, notify an administrator.

Consequences for Acts of Intimidation and/or Harassment

1. A formal complaint will be completed and filed in the student's permanent discipline file. Parent(s)/guardian(s) will be notified.
2. Depending on the results from the investigation, the student will be disciplined accordingly. Discipline may include suspension.

MAKE-UP OF FAILED CLASSES

In the four years a student is enrolled at Elma High School he/she has the opportunity to earn 24 credits, all 24 credits are required for graduation. However, if a student fails a class that is a graduation requirement he/she must make this class up to be eligible to graduate. There are options a student can pursue to make up a required class. These options are:

1. Retake the class the following semester/year
2. Attend Summer School if offered.
3. Students can use an online program to recover credits. There is a fee that the student is responsible for. See the Counseling Center for specific details.

WITHDRAWAL –TRANSFER

If a student finds it necessary to withdraw or transfer from school at any time during the year, the following procedure should be observed:

1. The student withdrawing must have permission from his/her parents or guardians.
2. Obtain a withdrawal form in the Counseling Office.
3. Have each teacher, the Registrar, and Main Office check the student out indicating any fines) and/or other obligations the student needs to satisfy.
4. Pay fees/fines in the Fiscal Office and return completed form to the Counseling Office.
5. Credits and/or transcripts may be held until such clearance is completed.

VALEDICTORIAN AND SALUTATORIAN

The Valedictorian, Salutatorian, and top ten students will be selected at the end of first semester. All students, including transfer students, in order to be considered for either award, must be enrolled at Elma High School for their entire senior year. Home school students are not eligible for Valedictorian, Salutatorian or top ten students.

CERTIFICATE OF ACADEMIC RECOGNITION

The Certificate of Academic Recognition will be awarded to graduates of Elma High School that have a minimum accumulative grade point average of 3.0 and have successfully completed each of the following required classes with a minimum grade of 2.0.

Mathematics:

2 years selected from, Algebra 2, Pre-calculus or Calculus (or running start equivalent)

Science:

1 year selected from Chemistry, Engineering Physics, Adv. Biology or Engineering Robotics (or running start equivalent)

Foreign Language:

2 years selected from Spanish or other appropriate Foreign Language (or running start equivalent)

English:

4 years of Composition and Literature (British Comp. & Lit. or Adv. Placement English) or 1 year of Speech taken in either Grade 11 or 12 (or running start equivalent)

The total minimum requirement would be 6 credits plus additional course work selected from Advanced Math, Science, Foreign Language, or Composition and Literature to make a total of 7 credits. (05-02) (02-14) (02-16) (02-17)

General Information

REGISTRATION

It is our philosophy that students are responsible for selecting courses that will meet their educational and career goals. To accommodate this belief, we allow students to pick the classes they would like to take the following year.

During the second semester, students will receive forms that outline the classes they are eligible to sign up for. In addition, students will receive information from their counselor regarding graduation requirements, specific classes that must be signed up for and other pertinent information. Students will then have the opportunity, with input from parent and staff, to request classes with alternatives in case a class they want is full. Students will then be given a time frame to turn in their registration sheets to their counselor. They are responsible to ensure that the registration deadline is met. Failure to complete the registration sheet before the deadline may jeopardize ones chances of registering with the rest of the students and getting in classes one wants.

ELMA HIGH SCHOOL FIGHT SONG:

Elma High School-Elma High School
Hail, all hail to you.
Honor, fame and glory too.
All hail our white and blue-
RAH! RAH! RAH!
Team deserving, all are serving.
Hold thy trust in hand.
There's no better school you'll find
In all the LAND!

BELL SCHEDULE - TBD

HOMEROOM/ADVISORY

Elma High School may provide an opportunity for students to receive extra support, assistance on their High School and Beyond Plan, social emotional learning, and more.

SCHEDULE CHANGES

With careful planning and forethought, prior to registration, students have the opportunity to build a schedule that will meet their goals. All students should develop a tentative plan of course work for the entire year that meets parent approval.

After the semester starts, each student has five (5) days in which to request a class change on elective classes. Class changes will not be honored after that time unless the student is misplaced according to ability or placed in an incorrect sequential class. As a general rule, no requirement will ever be dropped. Administrative approval is necessary for all changes and a form is required that a parent or guardian must sign. **A class dropped after 15 days may carry an "F" on the permanent transcript.**

Requests will **NOT** be granted for students wishing to take a different teacher, have classes with friends, do not like the classes they signed up for, or other invalid requests, etc. **In addition, multiple requests for changes will not be honored.**

GUIDELINES FOR SCHEDULE CHANGES

1. Not scheduled into a required class
2. Class needed for graduation
3. Student signed up for duplicate class
4. Running Start schedule change
5. Lack the required prerequisite for a class
6. Incomplete schedule
7. Teacher request
8. Counselor discretion

Withdrawal from individual classes will have no grade penalty until the 15th day after the start of each semester. Any withdrawal after the 15th day may result in an "F" withdrawal grade unless other arrangements have been made with the appropriate counselor and administrator. This also applies to Running Start students who withdraw from a college class.

Graduation: Flexible, Meaningful, Achievable



Washington students complete three components to achieve the high school diploma of their design.





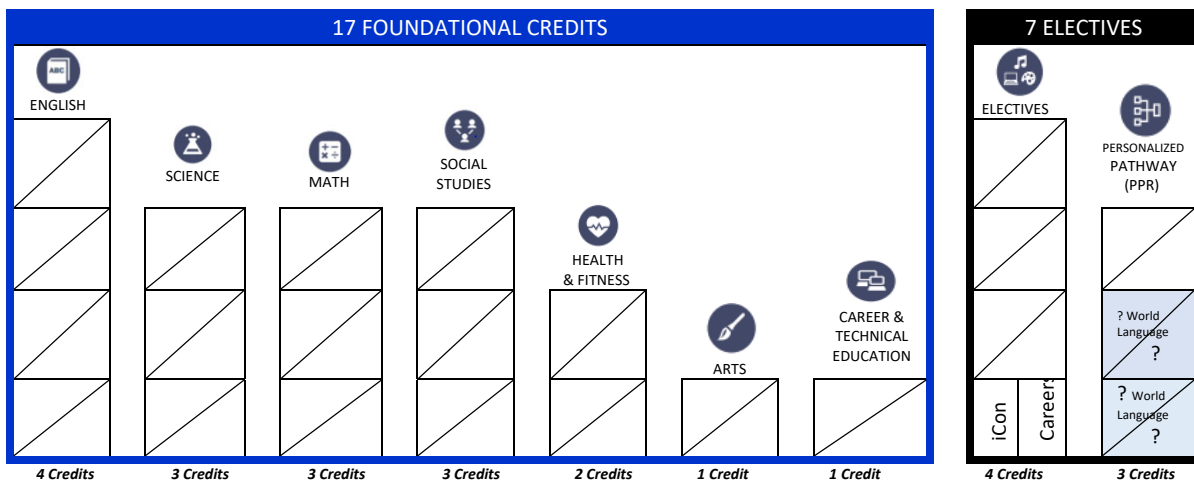
Graduate in Washington
The Washington High School Diploma

FLEXIBLE. MEANINGFUL. ACHIEVABLE.

Washington State High School Credits/Requirements:

**Middle school courses that transfer to high school: Algebra I*

Elma High School also included iConnect as a graduation requirement to complete High School & Beyond Plan



- | | |
|---|--|
| <input type="checkbox"/> 1. Meet or Exceed ELA & Math SBAC graduation scores | <input type="checkbox"/> 4. Combination of meeting ELA and/or Math standard 1-3 |
| <input type="checkbox"/> 2. Dual Credit in ELA & Math | <input type="checkbox"/> 5. Meet standard on ASVAB |
| <input type="checkbox"/> 3. Meet or Exceed SAT/ACT graduation scores | <input type="checkbox"/> 6. Complete CTE program sequence |

EHS: More than a HS Credit

High School Code/Class	College	College Class	College Credits	HS Credits	Graduation Pathway
ENG 514 – CIHS ENG 102	CWU	ENG 102 Academic Writing II	5	1.0	ELA Dual Credit
ENG 513 – CIHS ENG 101	CWU	ENG 101 Composition I	5	1.0	ELA Dual Credit
MTH 504 – CIHS Calculus	CWU	MTH 173 Calculus II	5	1.0	Math Dual Credit
MTH 503 – CIHS Calculus	CWU	MTH 172 Calculus I	5	1.0	Math Dual Credit
SOC 501 – CIHS Poli Sci 210	CWU	POSC 201 American Govt	5	1.0	NA
MTH 404 – CIHS Pre Calc	CWU	MTH 153 Pre-Calculus II	5	1.0	Math Dual Credit
MTH 403 – CIHS Pre Calc	CWU	MTH 153 Pre-Calculus I	5	1.0	Math Dual Credit
CTE 359-366 Elite Manf.	Bates	Bates: FACM 107, DIESEL 130, MACH 119	15	1.0-3.0	CTE Grad Pathway
PED 372 Sports Science II	PPC	KINS 250 Kinesiology	5	1.0	CTE Grad Pathway
*MTH 3XX – CIHS FIN Math	CWU	FIN 174 Personal Finance	5	1.0	CTE Grad Pathway Math Dual Credit
CTE 356 Education Careers	CPTC	EDUC&191 Education Practicum	3	1.0-3.0	CTE Grad Pathway ELA Dual Credit
ART 381/382 Yearbook Photo	CPTC	DED 177 Digital Photo	4	1.0	CTE Grad Pathway
CTE 354/355 Allied Hlt Sci Car	CPTC	CAH 102 Medical Terminology	5	1.0	CTE Grad Pathway
ENG 331/332 – Bus. Comm	CPTC	RBM 111 Business Comm.	4	1.0	CTE Grad Pathway ELA Dual Credit
SCI 331/332 Environment Sci	GHC	NR 120 Society & Nat. Res.	5	1.0	CTE Grad Pathway
ART 321/322 Ornamental Dsn	SCC	ARHRT 211 Floral Design	5	1.0	CTE Grad Pathway
SCI 321/322 Forensic Science	PCC	CJ 205 Intro to Investigation	5	1.0	CTE Grad Pathway
ART 281/282 Media Art	CPTC	CTC 110 Art, Design, Visual	5	1.0	CTE Grad Pathway
CTE 255/256 Adv. Manufact.	Bates	WELD 105 Shielded Arc Welding	5	1.0	CTE Grad Pathway
SCI 243/244 Fire Science	Bates	FIRES 101 Orientation to Fire	2	1.0	CTE Grad Pathway
CTE 241/242 Adv. Construct	CPTC	CONST 102 Safety & Op.	3	1.0	CTE Grad Pathway
CTE 235/236 Marketing Op II	GHC	BA 174 Small Bus Mngmt	5	1.0	CTE Grad Pathway
CTE 221/222 Adv. Ag Lead	PCC	MNGT 130 Customer Mngmt	5	1.0	CTE Grad Pathway
CTE 225/226 Adv. Ag Comm	CPTC	RBM 111 Business Comm.	4	1.0	CTE Grad Pathway
SCI 211/212 Plant Science	WWCC	AGSC 113 Cultivated Plants	5	1.0	CTE Grad Pathway
CTE 211/212 Leadership	PCC	MNGT 130 Customer Mngmt	5	1.0	CTE Grad Pathway
ART 181/182 Intro Media Art	CPTC	GTC 132 Adobe Photo	5	1.0	CTE Grad Pathway
CTE 163/164 Core + AC Manf.	CPTC	AMT 104 Intro Aviation Maint	5	1.0	CTE Grad Pathway
CTE 140 Career Tech/Explore	CPTC	CAS 121: Microsoft Word Core	3	0.5	CTE Grad Pathway
CTE 121/122 Ag Mech/Fab	Bates	WELD 103: Intro Welding	2	1.0	CTE Grad Pathway
CTE 101/102 Construction	CPTC	CONST 106: Basic Carpentry Skl	6	1.0	CTE Grad Pathway
CWU = Central Washington University GHC = Grays Harbor College <i>*In the works</i>			PCC = Pierce Community College SCC = Spokane Community College Bates = Bates College		
			CPTC = Clover Park Technical College WWCC = Walla Walla Community College <i>Note: All college articulations are subject to change</i>		

Apprenticeships Contact: Elma CTE Director	Internships/Job Placement Contact: Elma Career Connection Coordinator
Earn HS & College Credit, 2000 Journeyman card, \$\$ Open to Juniors & Seniors <ul style="list-style-type: none"> Manufacturing (Core Plus AC Manf &/or Ag Mech/Fab & Adv. Manf) Education Careers 	16 yr old + Earn HS credit and money during school Variety of placement options 14 yr old + Paid Summer Internships with Elma Summer Co-Op

Industry Recognized Certifications Offered at EHS

AJAC Bootcamp Certificate
Stihl Bronze
SAFEME

Core Plus Aerospace
Forklift Certification
Food Handlers Permit

OSHA 10 Certification
Wilderness 1st Aid
1st Aid/CPR Red Cross Certification

What's My Future Plan?

Who Am I?



What Can I Become?



How Will I Become That?



Identify your career & life goals. What are your interests?

"The Best way to predict your future is to create it."
~Abraham Lincoln

High School & Beyond Plan

What Career Clusters are you interested in?

- [Agriculture, Food & Natural Resources](#)
- [Architecture & Construction](#)
- [Arts, A/V Technology & Communications](#)
- [Business Management & Administration](#)
- [Education & Training](#)
- [Finance](#)
- [Government & Public Administration](#)
- [Health Science](#)
- [Hospitality & Tourism](#)
- [Human Services](#)
- [Information Technology](#)
- [Law, Public Safety, Corrections & Security](#)
- [Manufacturing](#)
- [Marketing](#)
- [Science, Technology, Engineering & Mathematics](#)
- [Transportation, Distribution & Logistics](#)

What Post-secondary Path will you take?



2- OR 4-YEAR COLLEGE?



MILITARY?



CAREER TRAINING?



APPRENTICESHIP?



WORK? (Go directly into a job)

What are your educational goals?

Does your high school plan align with your postsecondary plans?

Have I completed the FAFSA or WAFA?



On top of earning 24 credits, what Graduation Pathway will you complete?

- | | |
|--|---|
| <input type="checkbox"/> 1. Meet or Exceed ELA & Math SBAC graduation scores | <input type="checkbox"/> 4. Combination of meeting ELA and/or Math standard 1-3 |
| <input type="checkbox"/> 2. Dual Credit in ELA & Math | <input type="checkbox"/> 5. Meet standard on ASVAB |
| <input type="checkbox"/> 3. Meet or Exceed SAT/ACT graduation scores | <input type="checkbox"/> 6. Complete CTE program sequence |

What assessments are needed to achieve post-secondary goals?

High School Diploma:

- ☐ English Language Arts Smarter Balanced
- ☐ Math Smarter Balanced
- ☐ Science WCAS

Post-secondary Preparation:

- ☐ PSAT as Sophomore
- ☐ ASVAB as Junior & Senior
- ☐ SAT or ACT as Junior & Senior

Ask yourself if what you're doing today is getting you closer to where you want to be tomorrow?

Meets EHS Graduation Requirements

Subject	Credit	Check off ○ per 0.5 Credits Earned	Plan for Each Year to Meet Requirements for MINIMUM EHS Diploma		
English	4.0	○○○○○○○○○○	9th Grade		<input checked="" type="checkbox"/> off
Math			English	2 semesters	
Algebra	1.0	○○	Math (Algebra or Geometry)	2 semesters	
Geometry	1.0	○○	Biology	2 semesters	
Math	1.0	○○	Careers Exploration	1 semester	
Science			Health	1 semester	
Biology	1.0	○○	PE	2 semesters	
Physical Science	1.0	○○	Elective (CTE or Arts)	2 semesters	
Science (3rd Yr)	1.0	○○	10th Grade		<input checked="" type="checkbox"/> off
Social Studies			English	2 semesters	
World History	1.0	○○	Math (Geometry or Algebra 2)	2 semesters	
U.S. History	1.0	○○	Physical Science	2 semesters	
Civics/Economics	1.0	○○	World History	2 semesters	
Career & Technical Ed	1.0	○○	Elective (CTE, PE, or Arts)	2 semesters	
iConnect	0.5	○	Elective (CTE, PE, or Arts)	2 semesters	
Physical Education	1.5	○○○	11th Grade		<input checked="" type="checkbox"/> off
Health	0.5	○	English (review options)	2 semesters	
Arts	1.0	○○	Math (review options)	2 semesters	
PPR (personalized pathway requirement)	3.0	○○○○○○○ (careers, world language, art, CTE, etc.)	U.S. History	2 semesters	
Electives	3.5	○○○○○○○○	Science (review options)	2 semesters	
TOTAL CREDITS	24.0		Elective/PPR (CTE, PE, or Arts)	2 semesters	
It is suggested that the student select an occupation interest and take a course each year in high school from that interest area.			Elective/PPR (CTE, PE, or Arts)	2 semesters	
<input type="radio"/> WA State History Did you pass WA State History in 7th grade? <input type="radio"/> HIGH SCHOOL & BEYOND PLAN Did you complete? <input type="radio"/> FAFSA/WAFSA Did you complete?			12th Grade		<input checked="" type="checkbox"/> off
GRADUATION PATHWAY: MUST MEET ONE			Civics/Economics	2 semesters	
<input type="radio"/> ELA & Math SBAC <input type="radio"/> ELA & Math Dual Credit (College) <input type="radio"/> SAT/ACT <input type="radio"/> ASVAB <input type="radio"/> CTE Course Sequence			English (review options)	2 semester	
			iConnect	1 semester	
			Elective/PPR: _____ (iLife) _____	1 semester	
			Elective/PPR: _____	2 semesters	
			Elective/PPR: _____	2 semesters	
			Elective/PPR: _____	2 semesters	

Meets University Requirements

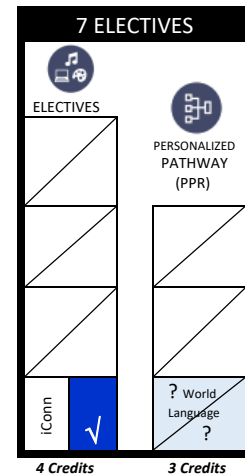
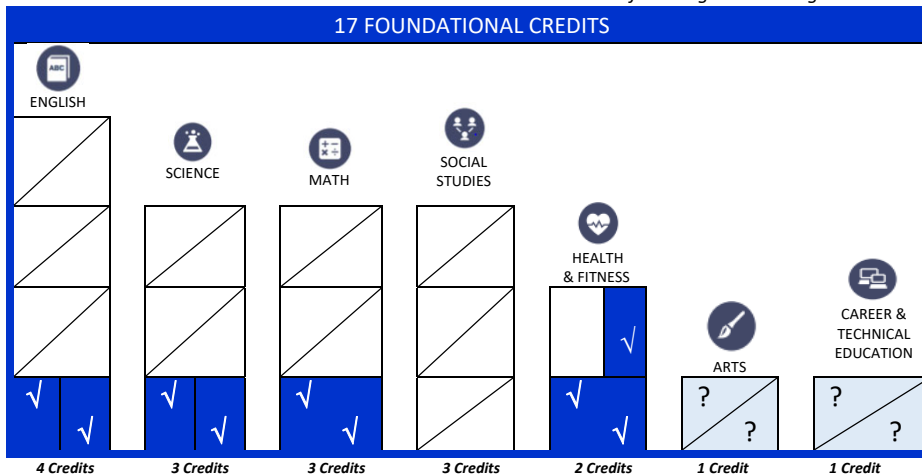
Subject	Credit	Check off ○ per 0.5 Credits Earned	Plan for Each Year to Meet Requirements for UNIVERSITY/COLLEGE		
English	4.0	○○○○○○○○○	9th Grade		<input checked="" type="checkbox"/> off
Math			English	2 semesters	
Algebra	1.0	○○	Math (<i>Algebra or Geometry</i>)	2 semesters	
Geometry	1.0	○○	Biology	2 semesters	
Algebra II	1.0	○○	Careers Exploration	1 semester	
Science			Health	1 semester	
Biology	1.0	○○	PE	2 semesters	
Physical Science	1.0	○○	Elective (<i>CTE or Arts</i>)	2 semesters	
Algebra Based Science	1.0	○○	10th Grade		<input checked="" type="checkbox"/> off
Social Studies			English	2 semesters	
World History	1.0	○○	Math (<i>Geometry or Algebra 2</i>)	2 semesters	
U.S. History	1.0	○○	Physical Science	2 semesters	
Civics/Economics	1.0	○○	World History	2 semesters	
Career & Technical Ed	1.0	○○	World Language (<i>Spanish</i>)	2 semesters	
iConnect	0.5	○	Elective (<i>CTE, PE, or Arts</i>)	2 semesters	
Physical Education	1.5	○○○	11th Grade		<input checked="" type="checkbox"/> off
Health	0.5	○	English (<i>review options</i>)	2 semesters	
Arts	1.0	○○	Math (<i>review options</i>)	2 semesters	
World Language	2.0	○○○○	U.S. History	2 semesters	
PPR (personalized pathway requirement)	1.0	○○ (careers, art, CTE, etc.)	Science (<i>Chemistry</i>)	2 semesters	
Electives	3.5	○○○○○○○	World Language (<i>Spanish</i>)	2 semesters	
TOTAL CREDITS	24.0		Elective/PPR (<i>CTE, PE, or Arts</i>)	2 semesters	
It is suggested that the student select an occupation interest and take a course each year in high school from that interest area.			12th Grade		<input checked="" type="checkbox"/> off
○WA State History Did you pass WA State History in 7th grade?			Civics/Economics	2 semesters	
○HIGH SCHOOL & BEYOND PLAN Did you complete?			English (<i>review options</i>)	2 semester	
○FAFSA/WAFSA Did you complete?			iConnect	1 semester	
GRADUATION PATHWAY: MUST MEET ONE			Elective/PPR: ____ (iLlfe) ____	1 semester	
○ ELA & Math SBAC			Elective/PPR: ____	2 semesters	
○ ELA & Math Dual Credit (College)			Elective/PPR: ____	2 semesters	
○ SAT/ACT			Elective/PPR: ____	2 semesters	
○ ASVAB			Elective/PPR: ____	2 semesters	
○ CTE Course Sequence					

9th Grade Class Options

- Five of the six credits are core credits every 9th grader will take.
- The sixth class has options for you to select from depending on what credit you want to satisfy.
- You MUST pass all your classes in order to stay on track for graduation.

CORE CREDITS REQUIRED FOR ALL 9TH GRADERS	Course	Course Code	Credit	Grades	Graduation Requirements
	English ~ 9th Grade				
	ENG 9: Intro Lit & Comp	ENG 111/112	1.0	9	ELA
	Math ~ 9th Grade Options (Placement)				
	Algebra I	MTH 104/105	1.0	9-12	Mathematics
	Geometry	MTH 205/206	1.0	9-12	Mathematics
	Science ~ 9th Grade				
	Biology	SCI 241/242	1.0	9	Biology, CTE
	PE ~ 9th Grade Options (Select One)				
	PE Fitness	PED 101/102	1.0	9-12	PE, Elective, PPR
	Cardio	PED 105/106	1.0	9-10	PE, Elective, PPR
	Sports & Nutrition	PED 109/110	1.0	9-10	PE, CTE, Elective, PPR
	Beg. Body Conditioning	PED 301/302	1.0	9-12	PE, Elective, PPR
	Careers/Health ~ 9th Grade Options (Select One)				
	Career Tech & Health	CTE 140/HTH 171	1.0	9	Elective/PPR & Health
	Health Science & Careers	CTE 146/147	1.0	9	Elective/PPR & Health
	9th Grade Options ~ Electives (Select One)				
STUDENT CHOICE	Intro Commercial Art	ART 151/152	1.0	9-12	Art, CTE, Elective/PPR
	Intro Media Art	ART181/182	1.0	9-12	Art, CTE, Elective/PPR
	Band	BND 101/102	1.0	9-12	Art, Elective/PPR
	Construction	CTE 101/102	1.0	9-12	CTE, Elective/PPR
	AFNR (Agriculture, Food Systems, Natural Resources)	CTE 111/112	1.0	9-10	CTE, Elective/PPR
	Ag Mechanic/Fabrication	CTE 121/122	1.0	9-12	CTE, Elective/PPR
	Core Plus Aircraft Mnf. 1	CTE 161/162	1.0	9-11	CTE, Elective/PPR
	Choir	MUS 101/102	1.0	9-12	Art, Elective/PPR
	Spanish I	SPA 101/102	1.0	9-11	PPR = World Language

*Middle school courses that transfer to high school: Algebra I



9th Grade Class Options

ENG 111/112

ENG 9: Intro Lit & Comp

Credit: 1.0 **Grades:** 9

Code: ENG 111/112

Graduation Requirement: English

Description:

Reviews basic grammar and introduces freshmen to forms of literature including short story, poetry, biography, non-fiction, drama, and the novel. There is a focus on improving critical reading and writing skills. Study and practice the writing process as a series of steps towards a completed work. Learn how to analyze their own writing, learning the difference between expository and argumentative responses.

SCI 241/242

Biology

Credit: 1.0 **Grades:** 9

Code: SCI 241/242

Graduation Requirement: Biology

Description: **Club:** Skills/FFA

This introduction to Biology uses inquiry to gain a scientific understanding of living systems, and then applies that knowledge to solve human problems. Students will use writing, reading, and mathematics to explore the characteristics, organization, and relationships of living organisms. Learn about the diversity of life by discovering the role of energy, cells, genetics, ecology, and technology!

MTH 104/105

Algebra I

Credit: 1.0 **Grades:** 9-12

Code: MTH 104/105

Graduation Requirement: Mathematics

Description:

Discovery and development of algebraic concepts that include various types of expressions, equations, inequalities, functions and systems of equations. Concepts are extended to both theory and application.

MTH 205/206

Geometry

Credit: 1.0 **Grades:** 9-12

Code: MTH 205/206

Graduation Requirement: Mathematics

Description:

Geometry is an algebra-oriented subject dealing with points, lines, planes, circles, angles, polygons, and polyhedrons. Basic forms of reasoning (inductive and deductive) and logic, coordinate Geometry and figure transformations will be studied during the year with emphasis on how Geometry is used in the everyday world.

PED 101/102

PE Fitness

Credit: 1.0 **Grades:** 9-12

Code: PED 101/102

Graduation Requirement: PE, Elective/PPR

Description:

An advanced experience in all the phases of the Physical Education sequence. The following areas will be covered: aerobic conditioning, weight training, and individual and team activities. Students must furnish P.E. shorts or sweats, a T-shirt, tennis shoes and a lock for their P.E. locker. Jean shorts are not to be worn during class. Daily participation and dressing out are essential to successful completion of the course.

PED 105/106

Cardio

Credit: 1.0 **Grades:** 9-10

Code: PED 105/106

Graduation Requirement: PE, Elective/PPR

Description:

Do you want to improve your cardiovascular conditioning and your overall body strength? This will be developed for each student by the instructor with low to medium impact exercises. No Olympic or powerlifting techniques will be taught. Activities will include walking, power walking, jogging, fitness circuits, weight training and other activities. This course is not eligible to be considered for advanced weights. Daily participation is required.

PED 109/110

Sports & Nutrition

Credit: 1.0 **Grades:** 9-10

Code: PED 109/110

Graduation Requirement: PE, CTE, Elective/PPR

Description: **Club:** Skills USA

Engage in physical activity that will focus on strength training, conditioning, and flexibility. Balance this with understanding muscle dynamics and the role nutrition plays with overall health and wellness. Teens will alternate work out days with in-class activities that include preparing nutritious foods.

Certification: Food Handlers Card

PED 301/302

Beg. Body Conditioning

Credit: 1.0 **Grades:** 9-12

Code: PED 301/302

Graduation Requirement: PE, Elective/PPR

Description:

For students who want to improve both their strength and aerobic conditioning. JV and Varsity athletes are encouraged to take this class. All self-motivated, hard-working students who aren't afraid of a good workout or perspiration are welcomed. The hardest working students will be considered for advanced weights. The grade is based on daily participation and strength and agility tests.

9th Grade Class Options

CTE 140

Career Tech

Credit: 0.5 **Grades:** 9
Code: CTE 140
Graduation Requirement: CTE, Elective/PPR
Description: **Club:** All CTSO's
 The world is changing, are you ready? Do you know what you want to do? Start thinking about your strengths, goals, future, and how you can get there! Answer that question you have been pondering—why do I need an education?
College Credit: Yes 3 credits
GHC: BTECH 102 - Microsoft Applications
Certification: Precision Exam #1003

HTH 171

Health

Credit: 0.5 **Grades:** 9
Code: HTH 171
Graduation Requirement: Health
Description:
 Health covers self-esteem, mental health, nutrition, CPR and first aid, substance abuse prevention, and family life and sexual health education. The class is designed to give students information to help them make informed decisions, which are practiced through healthy relationships and communication skills. **Rotates with Careers.**
Certification: 1st Aid/CPR

CTE 146/147

Health Science & Careers

Credit: 1.0 **Grades:** 9
Code: CTE 146/147
Graduation Requirement:
 CTE, Elective/PPR & Health
Certification: 1st Aid/CPR

Description:
 Interested in Medical, Veterinary, or Fire science or Human Services? This class focuses on these careers, medical terminology, and body systems to jump start your career path. The class work closely with WSU School of Medicine and CPTC for post-secondary education options and tours.

ART 151/152

Intro Commercial Art

Credit: 1.0 **Grades:** 9-12
Code: ART 151/152
Graduation Requirement: Art, CTE, Elective/PPR
Description: **Club:** Skills USA
 Introduce basic techniques in pencil, pastels, India ink, charcoal, tempera paint, sculpture, watercolor, acrylics, collage and digital. Projects will emphasize color, line, texture, shape, space, value and form.

ART 181/182

Intro Media Art

Credit: 1.0 **Grades:** 9-12
Code: ART 181/182
Graduation Requirement:
 Art, CTE, Elective/PPR
Description: **Club:** Skills USA
 Lights, Camera, Action! Be creative and learn introductory techniques in photography, video production, digital drawing and design, and anime. You will utilize Adobe to create digital art.
College Credit: Yes 5 credits
CPTC: GTC 132 Digital Imaging I: Adobe Photo

BND 101/102

Band

Credit: 1.0 **Grades:** 9-12
Code: BND 101/102
Graduation Requirement: Art, Elective/PPR
Description: **Club:** Band
 Band students will perform a wide variety of music literature from marching to concert and will represent EHS at all concerts, musical activities and sporting events. The marching band will travel to parades in the spring. Varsity letter awarded for 90% participation of performances. Students will refine and improve tone, intonation, scales, chords, musical terms, proficient use of instrument, performance skills and sight-reading.

CTE 101/102

Construction

Credit: 1.0 **Grades:** 9-12
Code: CTE 101/102
Graduation Requirement: CTE, Elective/PPR
Description: **Club:** Skills & FFA
 Hands-on technique in foundations, floor systems, framing, and basic drafting techniques. Additionally, electrical systems and green building components are explored. Correct, safe operation of power tools implemented.
College Credit: Yes 6 credits
CPTC: CONST 106 - Basic Carpentry Skills
Certification: OSHA 10, Forklift Cert

9th Grade Class Options

CTE 111/112

AFNR (Agriculture, Food Systems, Natural Resources)			
Credit:	1.0	Grades:	9-10
Code:	CTE 111/112		
Graduation Requirement:	CTE, Elective/PPR		
Description:	Club:	FFA	
Understand the diversity of the dynamic field of agriculture and natural resources. Students dabble in the applied science of agriculture through investigating animal science, leadership, forestry, horticulture, wood and metal mechanics, communication, food science, and more. FFA is a component of the class.			
Certification:	Precision Exam: 21st Century Skills		

CTE 121/122

Ag Mechanic/Fabrication			
Credit:	1.0	Grades:	9-12
Code:	CTE 121/122		
Graduation Requirement:	CTE, Elective/PPR		
Description:	Club:	Skills & FFA	
Metal fabrication techniques multiple process welding, plasma arc cutting, oxy-acetylene cutting, and sheet metal fabrication. You are a FFA & Skills USA member that builds your résumé.			
College Credit:	Yes	6 credits	
<i>GHC: WELD 101 - Related Welding I</i>			
Certification:	Stihl Bronze, OSHA 10, Forklift		

CTE 161/162	Core Plus Aircraft Mnf. 1		
	Credit:	1.0	Grades: 9-11
	Code:	CTE 161/162	
	Graduation Requirement:	CTE, Elective/PPR	
	Description:	Club:	Skills USA
	Interested in the trades and manufacturing? Learn about the aerospace industry while assembling materials such as aluminum, fiberglass, sheet metal, and more. Use air tools, CNC press brake, hydraulic shear, and more. Make ping-pong paddle, cell phone stand, etc.		
	Certification:	OSHA 10, Forklift	

Choir			
MUS 101/102	Credit:	1.0	Grades: 9-12
	Code:	MUS 101/102	
	Graduation Requirement:	Art, Elective/PPR	
	Description:	Club:	Choir
	Students will be taught the basics of music: breathing, posture, sound production, enunciation, reading of music, and showmanship. There will be at least one performance each semester in which the student is required to participate. Dress code for all performances: Boys—nice dress shirt and pants (no blue jeans) and shoes without holes. Girls—dresses or skirts.		

SPA 101/102	Spanish I			
	Credit:	1.0	Grades:	9-11
	Code:	SPA 101/102		
	Graduation Requirement:	Actively engage in Spanish vocabulary, pronunciation, and grammar through a variety of methods and learning styles. Learn about Hispanic culture and more.		
	PPR = World Language			

Make your class and activity choices based on your post-secondary options that support your career choice after high school



Meaningful, Achievable, Flexible Education
~ Build Your Future ~

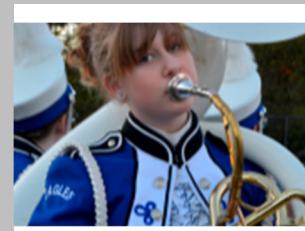
EHS Student Activities

Elma High School provides students with a variety of activities in order to develop skills in leadership, teaming, citizenship, and more.

Co-Curricular Clubs & Organizations:

(must be enrolled in class to join club and should purchase ASB card)

Activity	Cost	Description	Requirements
ASB Associated Student Body	ASB Card \$30	All Students are members of ASB. Students in ASB work to recognize student achievements other than sports.	Officers are to maintain a 3.0 GPA or higher
Ag Co-op	FFA	Develop and manage the school garden and natural resource center system through FFA.	Enrolled in Agriculture Classes
Band Council	ASB Card \$30	Promote school pride and spirit by performing at games, parade, & assemblies.	Member of Concert/Jazz Band
Choir Club	ASB Card \$30	Promote school pride and spirit by singing in concerts, school events, & assemblies.	Member of Choir
Drama Club	ASB Card \$30	Develop public speaking, memorization and performance skills while performing plays.	Audition
FBLA	FBLA	Leadership with business education.	Enrolled in Business classes or CTE class
FFA	FFA	Develops premiere leadership, personal growth, and career success through agriculture.	Enrolled in Agriculture Classes
Multi-Media	Skills USA	Promotes leadership within the multi-media industry. This is a part of Skills USA.	Enrolled in Multi-Media Classes Join Skills USA
Skills USA	Skills USA	Provides opportunities for leadership development, personal growth, and career skill building.	Enrolled in a qualified CTE class
Yearbook	Skills USA	Create and publish the EHS Annual.	Enrolled in Yearbook



EHS Student Activities

Elma High School provides students with a variety of activities in order to develop skills in leadership, teaming, citizenship, and more.

Extra-Curricular Clubs & Organizations: (events done solely after school hours)

Activity	Cost	Description	Requirements
Cheerleading	ASB Card \$30 +Uniform	Cheer for Fall and Winter sports	Attend practices and games
Dance & Drill	ASB Card \$30 +Uniform	Join Fall Dance & Drill for Football season or the Winter Dance & Drill for competition	Attend practices and games
Equestrian	ASB Card \$30+arena/club	Compete in equine competitions. Governed by WA HS equestrian team/EHS	Attend practices and compete
Gay Straight Alliance (GSA)	ASB Card \$30	Students come together to unite and celebrate diversity of individuals.	Attend meetings
Honor Society	ASB Card \$30	Official induction Jr. & Sr. year. Promotes leadership & community service activities.	3.20 GPA and Junior Standing
Knowledge Bowl	ASB Card \$30	Academic Quizzing over a variety of topics.	Attend Practices
United Peoples Group (UPG)	ASB Card \$30	Students come together to unite and celebrate diversity of individuals.	Attend meetings
Writing Club	ASB Card \$30	Weekly meeting to plan, write, and publish school newspaper.	Attend meetings
Athletics	ASB Card \$30	Produce an honest work ethic, life skills, and team building values.	Attend practices & maintain grades

Fall:
Football
Volleyball
Cross Country
Golf - Boys
Soccer - Girls

Winter:
Basketball - Girls
Basketball - Boys
Wrestling - Boys
Wrestling - Girls

Spring:
Fast Pitch
Track (Boys & Girls)
Baseball
Soccer - Boys
Golf - Girls

Contact Information

Elma High School Website:

www.eagles.edu

next select “High School” on the top bar for “Our Schools”

Elma High School Contacts:

Superintendent	482-2822 ext. 5100	Chris Nesmith	cnesmith@eagles.edu
Principal	482-3121 ext. 3100	Bill Oppliger	boppliger@eagles.edu
Assistant Principal	482-3121 ext. 3105	Sunshine Perry	sperry@eagles.edu
Counselor (A-K)	482-3121 ext. 3112	Bobbi Smith	bsmith@eagles.edu
Counselor (L-Z)	482-3121 ext. 3111	TBD	xxxxx@eagles.edu
Athletic Director	482-3121 ext. 3106	Ron Clark	rclark1@eagles.edu
CTE Director	482-3121 ext. 3303	Christi Kershaw	ckershaw@eagles.edu
Special Services	482-3121 ext. 5104	Stacey Rockey	srockey@eagles.edu
ELL	482-3121 ext. 3254	Katie Gallagher	kgallagher@eagles.edu
ASB Adviser	482-3121 ext. 3108	Peyton Elliott	pelliott@eagles.edu
Attendance	482-3121 ext. 3116	Brooke Seaberg	bseaberg@eagles.edu
Direct Attendance	482-1060	Brooke Seaberg	bseaberg@eagles.edu
Fiscal	482-3121 ext. 3104	Kellie Nolan	knolan@eagles.edu
Registrar	482-3121 ext. 3110	Wendy Richmond	wrichmond@eagles.edu
Athletic Assistant	482-3121 ext. 3164	Dee Velasco	dvelasco@eagles.edu
CTE Secretary	482-3121 ext. 3107	Angie Patton	apatton@eagles.edu

Elma High School
1011 W. Main
Elma, WA 98541
(360) 482-3121

The Elma School District is an Equal Opportunity Employer. Students, families and other stakeholders are notified the district does not discriminate based on sex, race, creed, religion, color, age, national origin, sexual orientation, gender expression or identity, veteran or military status, disability, or the use of a trained dog guide or service animal in any programs or activities, and provides equal access to the Boy Scouts and other designated youth groups.

Designated to handle inquiries about nondiscrimination policies are:
Title IX Officer – Chris Nesmith, cnesmith@eagles.edu
504 Section Coordinator - Stacey Rockey, srockey@eagles.edu