



Update on FCPS Construction/Renovation Projects

March 2020



STEAM & Success Academies

▶ Architect:	Ross Tarrant Architects
▶ General Contractor:	D.W.Wilburn, Inc.
▶ GC Contract Sum:	\$22,108,500.00
▶ Total Project Cost:	\$26,990,125.53
▶ Change Orders to Date (2):	(\$8,856.00)
▶ Scheduled Contract Completion Date:	October 15, 2020
▶ % of Contract Completed:	36.0%
▶ Revised Completion Date per GC:	No Change

STEAM & Success Academies

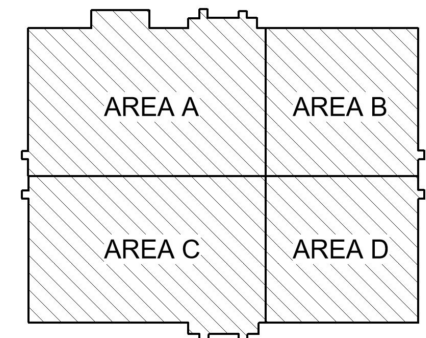
Schematic Rendering of Front Façade



STEAM & Success Academies

► **Work Completed (February):**

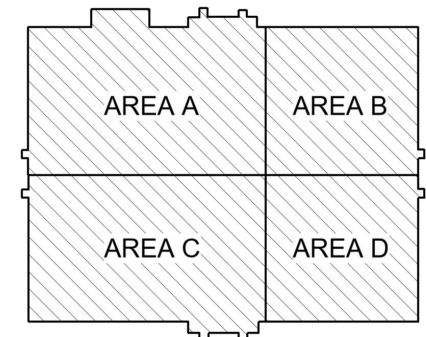
- Continued building and site demolition as required for new work. Site storm line installation continued.
- Foundations completed at new columns. New second floor concrete floor slab completed.
- Structural steel field welding and detailing continued in Areas A & C.
- Metal stud wall framing and door installation to continue in Areas A & C. Sound batts and gypsum board topping out of walls continued in Areas A & C and gypsum board hanging began in Area B. Spray foam insulation began in Areas A & B.
- Geothermal drilling completed, line installation continued, with 60% of tie-ins completed. MEP under-slab rough-ins, and HVAC ductwork, piping and units continued. Plumbing and electrical rough-ins continued. Exterior sprinkler work began.



STEAM & Success Academies

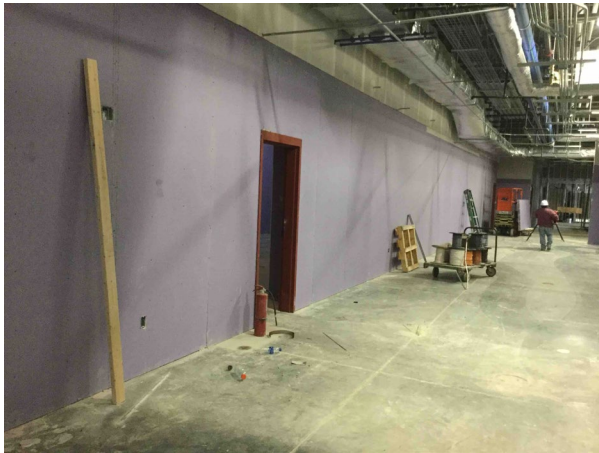
► **Current Work Effort (March):**

- Building demolition (porte cochere), site demolition, and storm line installation to continue.
- Concrete to be placed at new stairs. Steel installation to continue at miscellaneous openings.
- Structural steel work to be completed in Area A and C. Second floor metal decking to be completed. Field Welding and detailing to be completed and work will begin on steel in miscellaneous openings.
- Metal stud wall framing and door installation to continue in Areas A & C. Sound batts and gypsum board topping out of walls to continue in Areas A & C and gypsum board hanging to continue in Area B. Ceiling grid installation to begin in Area B. Spray foam insulation to continue.
- Geothermal line installation and tie-ins to continue. MEP under-slab rough-ins to be completed. HVAC ductwork, piping and units will continue. Plumbing and electrical rough-ins will continue. Exterior sprinkler work to continue.



STEAM & Success Academies

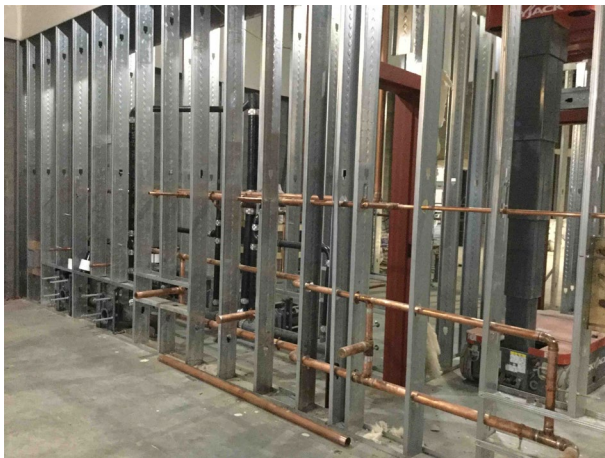
Area B Drywall



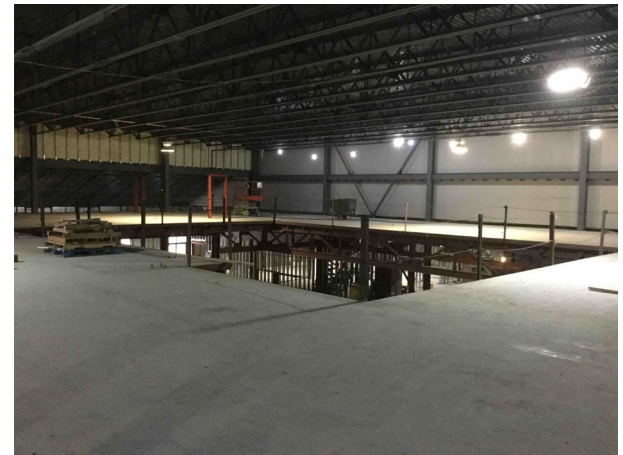
Area B Spray Foam Insulation



New Restroom Plumbing

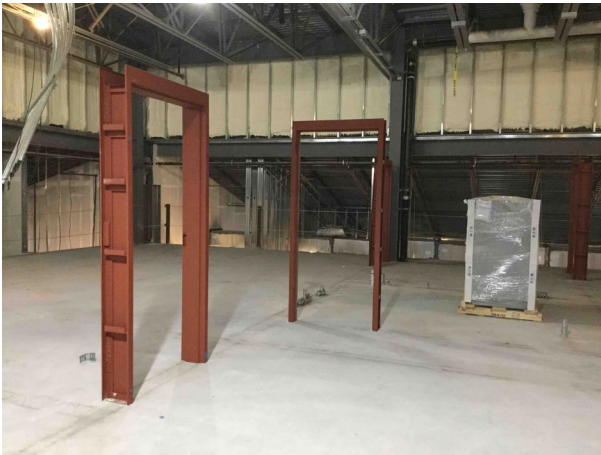


New 2nd Fl. Concrete Slab



STEAM & Success Academies

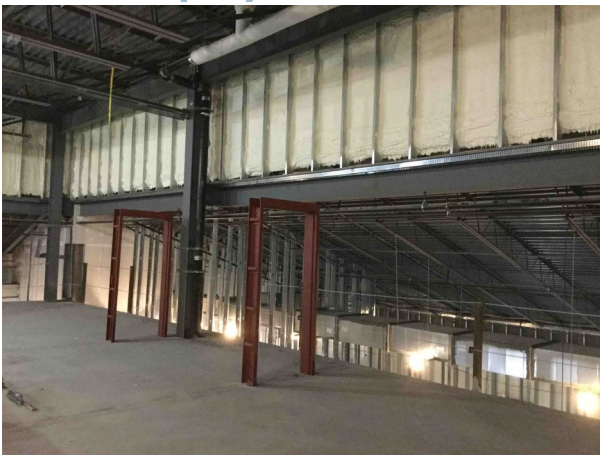
2nd Fl. Door Frame Installation



2nd Fl. Door Opening Demo



2nd Fl. Spray Foam Insulation



2nd Floor Wall Framing

