



Lafayette High School

401 Reed Lane
Lexington, KY 40503
(859) 381-3481

Please view the 2023 Exam Schedule and location for each exam. Note the location and time of arrival for each exam you are taking. Exams are given in two locations due to the size and timing of our exams. Exams will either be at Central Bank Center next to Rupp Arena or Lafayette High School. Please review this information in its entirety.

*******Off-site testing location*******

**Central Bank Center next to Rupp Arena
430 W Vine St, Lexington, KY 40507**

GENERAL EXAM INFORMATION:

Please be ready to begin testing when you arrive. Pencils sharpened, already stopped at the restroom, etc. Check the list of what to bring/not to bring below. We will begin promptly.

IMPORTANT! You are required to arrive at the given arrival time. **Students may not be dismissed until an exam has officially ended.** Do not ask to leave early if you finish before the end of the test, as your request will be denied. If you play a sport or have a job, it will be your responsibility to inform your coach or employer of your AP obligation and arrangements should be made accordingly. You will be excused for the entire school day.

You **should bring** the following items to the exam:

- Your school badge or another form of ID.
- Several sharpened No. 2 pencils (with erasers) for all multiple-choice answer sheets
- Black or dark-blue ballpoint pens for completing areas on the exam booklet covers and for free-response questions in most exams
- A calculator with the necessary capabilities if you are taking an AP Calculus, Chemistry, Physics, Biology or Statistics exam. Visit www.collegeboard.com/apstudents to learn more about the calculator policy for each of these exams, and for a list of authorized calculators.
- A ruler or straightedge if you're taking an AP Physics Exam
- A watch (not a smartwatch) so you can monitor your time.
- Layers of clothing (it could be warm or chilly in the testing center, so be prepared).
- Water/small snack
- Bagged lunch-if you have 2 exams in the same day, or if you have morning extended time.
- Chromebook (only for French, Spanish, Japanese, European History and Music Theory)

You **should not bring** the following to the exam:

- Books, compasses, correction fluid, dictionaries, highlighters, or notes
- Backpack or large bag
- Test prep books, class notes, textbooks, etc. These cannot enter the testing room.
- Rulers and straightedges (except as noted)
- Scratch paper (notes can be made on portions of the exam booklets)
- Computers (except as noted for students with specific exams or disabilities), or calculators (except as noted)
- Watches that beep or have an alarm
- Portable listening or recording devices (even with headphones) or photographic equipment
- **Electronic equipment (phones, smartwatches, or wearable technology of any kind, tablet computers, bluetooth devices, portable/listening devices, cameras or other equipment. These will be confiscated at the door should you arrive with them.**
- Clothing with subject-related information
- Food or drinks in the main testing area

2 EXAMS IN ONE DAY

If you have two exams in one day, you will not have time to leave for lunch. You will need to bring your lunch and you will have approximately 20 minutes in between exams.

TERMS AND CONDITIONS

The College Board requires that all students accept the terms and conditions. You will be asked for confirmation of your agreement to these terms as part of your test on exam day.

[AP Exam Terms and Conditions](#)

EXAM LOCATIONS

Exams are given in two locations due to the size and timing of our exams. Exams will either be at Central Bank Center, located at **430 W. Vine St, 40507**, next to Rupp Arena or Lafayette High School. See the exam schedule for specific location and report time for each AP exam. Exams given at Central Bank Center will be given with both Henry Clay and Dunbar High School students. **Be sure to check your email from Total Registration** the week prior to testing for specific information.

Transportation to and from exams is your responsibility. Arrival times will be strictly adhered to, so please make all necessary arrangements to arrive on time for each exam. Exam ending times have been given to assist in making transportation arrangements. However, times are approximate and are the earliest dismissal time possible. Using the regular school bus transportation system **will not** be possible due to the testing times set by the College Board Advanced Placement (AP) Testing Program. **In addition, their policy states, “no student will be admitted to a testing room late.”**

Students with **approved testing accommodations** from the College Board will test at Lafayette. Specific details regarding your testing location will be emailed.

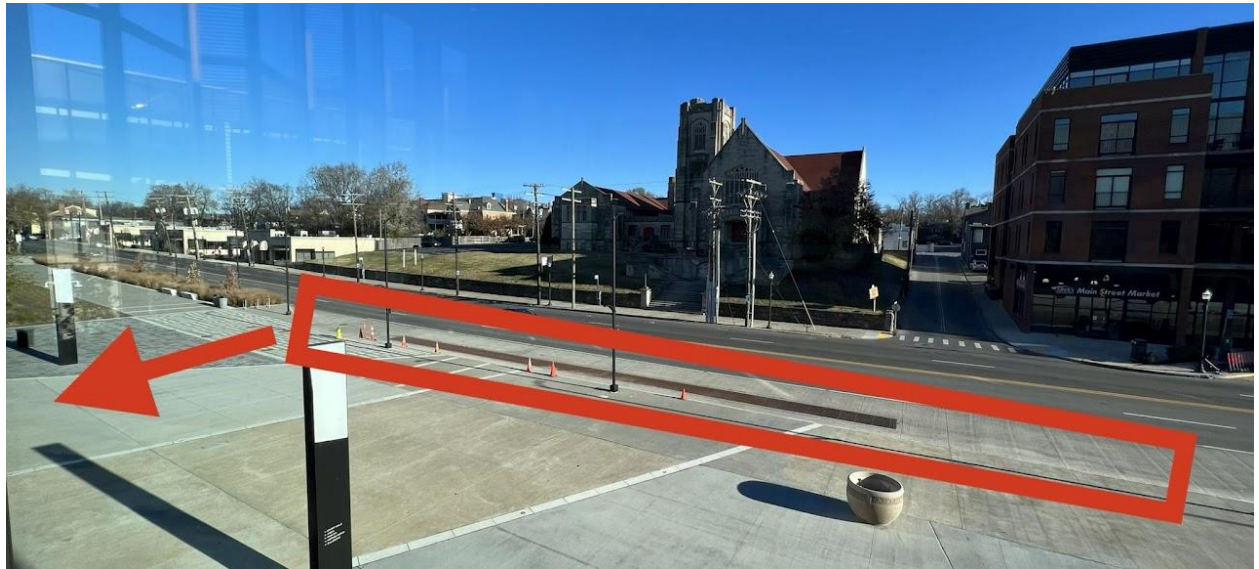
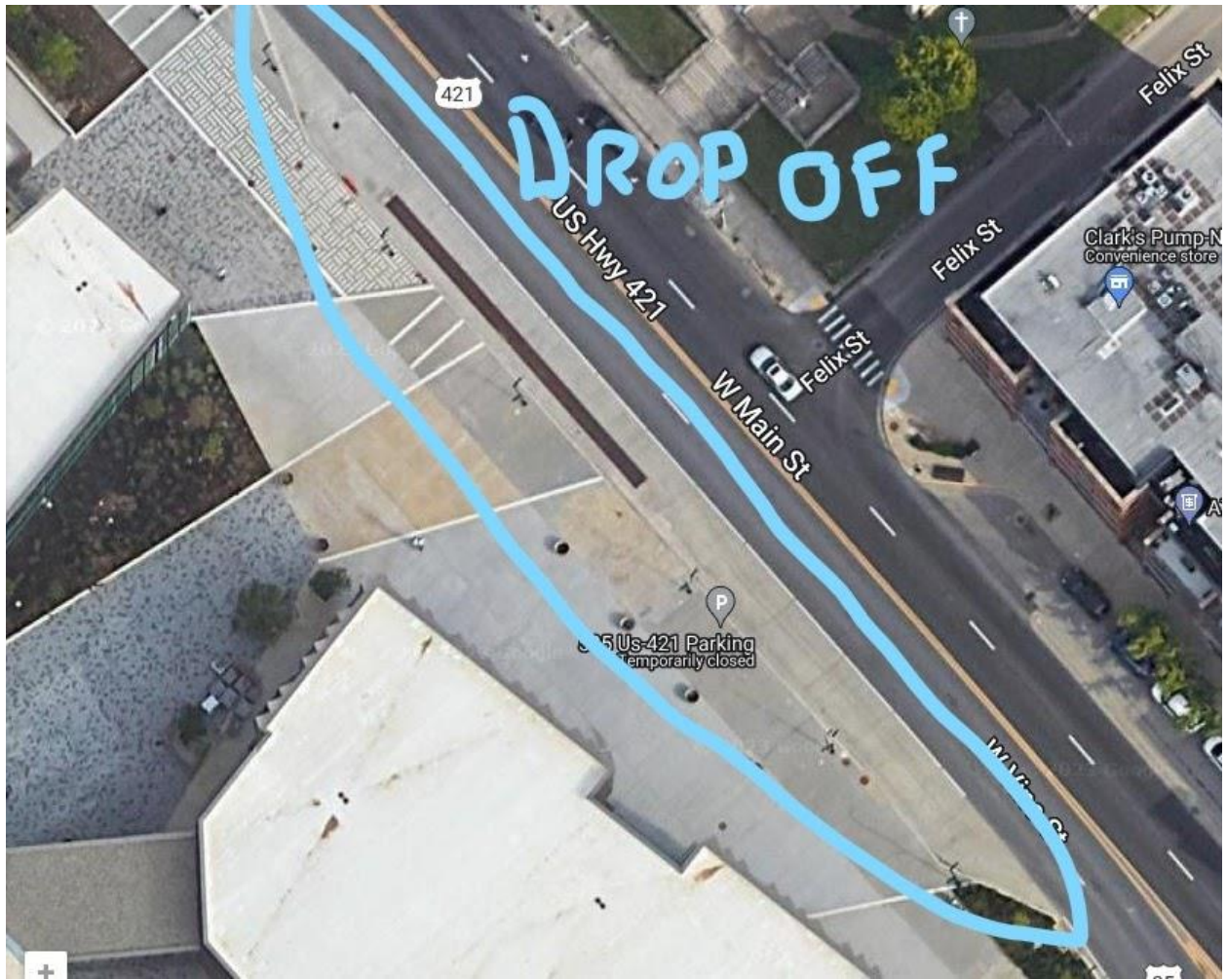
Students testing at Central Bank Center:

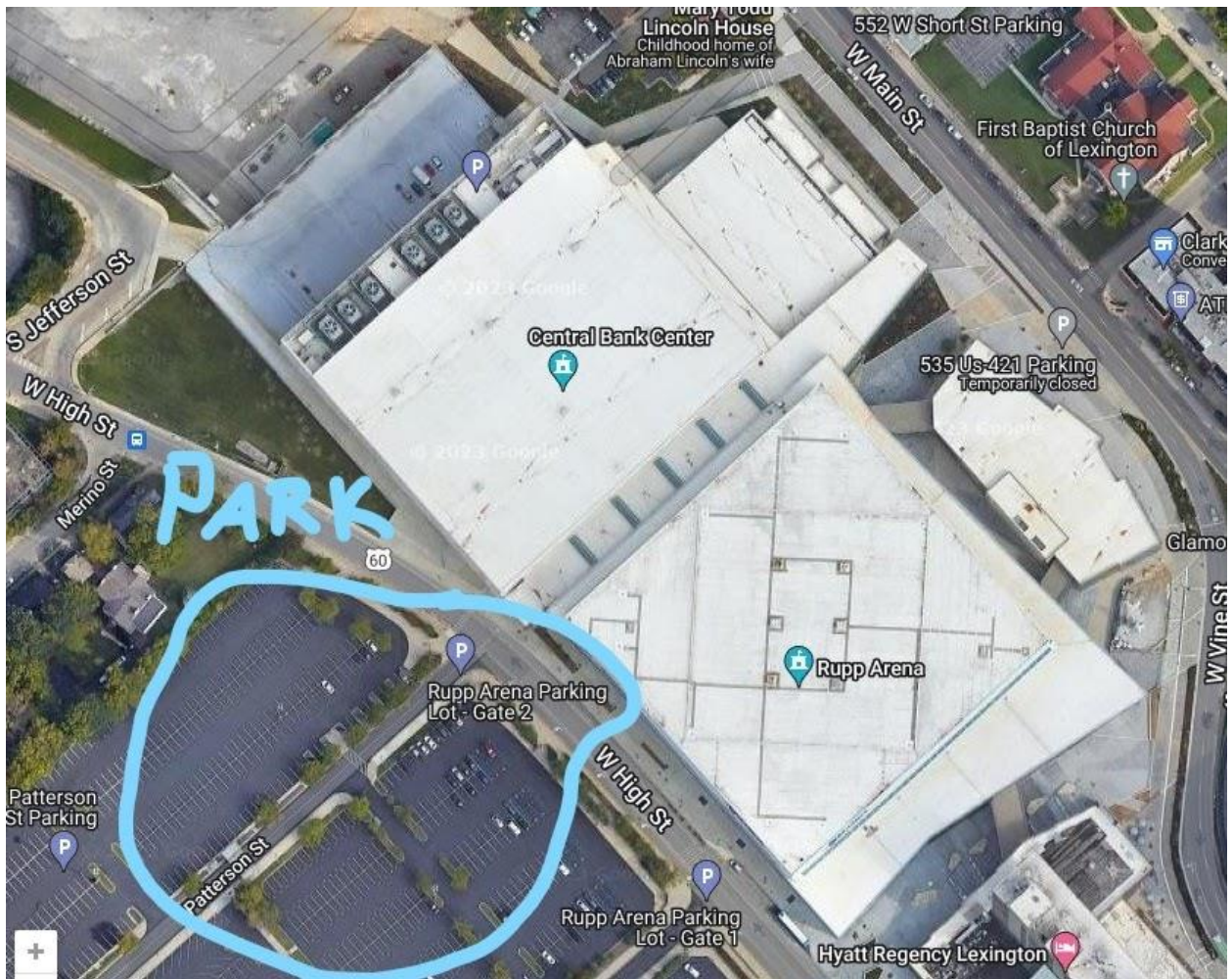
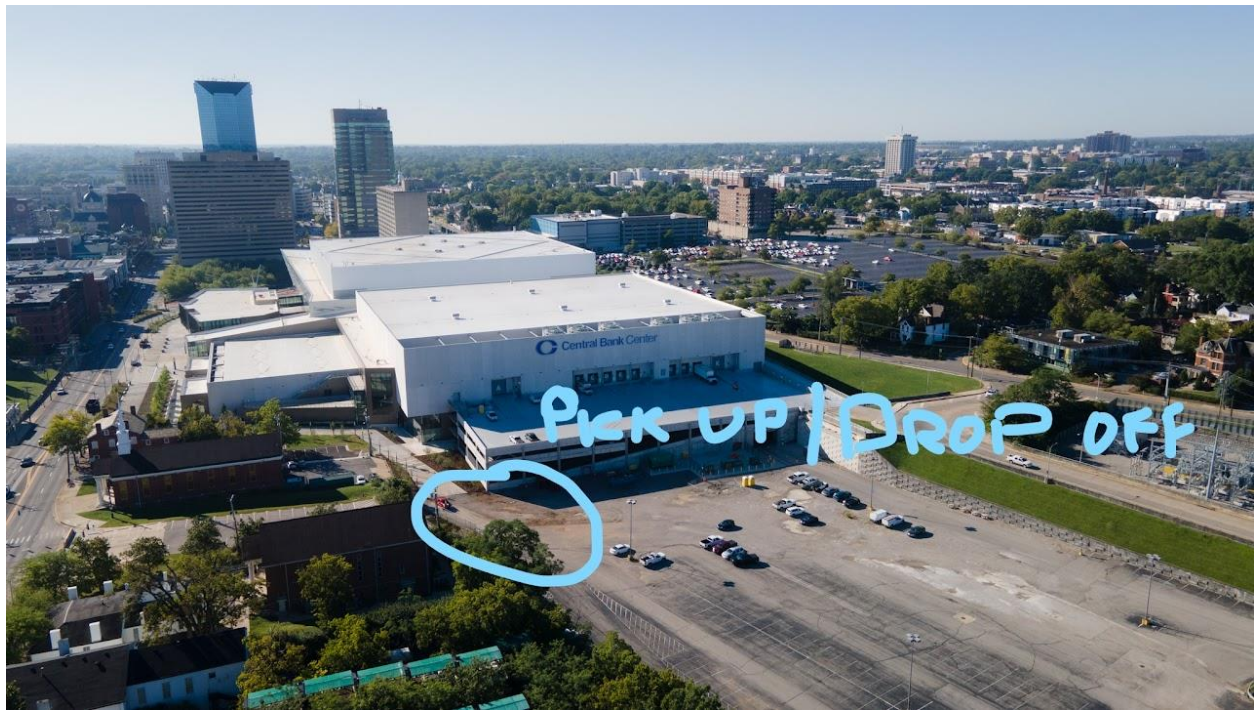
Please make sure you have estimated the drive time to the location, accounted for rush hour traffic and know where you are going. We highly recommend you to either carpool or be dropped off and picked up.

Drop off points are available on W Vine/Main Street in front of Central Bank Center (1st & 2nd images below) and in the Manchester Street lot behind Central Bank Center (3rd image below). When using the Manchester lot, students will need to use the sidewalk around Central Bank Center to arrive/depart from the entrance on W Vine/Main St.

For student pickup, please wait in the Manchester Street lot if it's open or pay to wait in the High Street parking lot. **DO NOT** block traffic on Main or High Streets trying to pick up your student. On many test days, over 200 students will be dismissed at the same time.

Parking is available in the High Street lot, gate 2, for students (last image below). The cost is \$6 for the first two hours and \$2 for each additional hour up to \$12 per day. For students parking in the High Street lot, you will enter the Central Bank Center on High Street. **The parking lot ONLY takes cards. There is no person working on site to accept cash.**





SCHOOL ATTENDANCE

Taking exams administered off-campus:

Due to the travel required, students taking exams administered off-campus are excused for the entire school day of their off-campus AP exam.

Students Checking Out after exams at Lafayette:

If your exam is at Lafayette, you will be excused to leave after (for morning exams) or to arrive later (for afternoon exams) if you choose. For leaving after your morning exam, your exam proctor will give you directions on checking out. For arriving later for afternoon exams, you will need to check in to the front office.

Students receiving accommodations on exams:

If you have been approved for exam accommodations, your exams will be administered at LHS. A Counselor will be providing your scheduling details to you. If you decide to leave after your exam, your proctor will inform you of check out instructions.

ABSENCES FOR EMERGENCIES

If you are ill and cannot take the exam on the testing date, it is your responsibility to email Mrs. Lilly at tracey.lilly@fayette.kyschools.us **BEFORE** the test begins. **If you do not show and do not notify, you will be fined College Board's unused exam fees.**

CANCELLATIONS

If you decide to not take a test, please email Mrs. Lilly prior to the exam:
tracey.lilly@fayette.kyschools.us

Canceling ensures that a roomful of students are not waiting on you for the test to begin, and that we are accurately budgeting for space and proctors.

BEST OF LUCK TO YOU! Email Mrs. Lilly or Ms. Leber with any questions:
tracey.lilly@fayette.kyschools.us arin.leber@fayette.kyschools.us