

Henry  
Clay



High  
School  
2023~2024

Program of Studies

# Welcome to Henry Clay High School

2100 Fontaine Road  
Lexington, KY 40502  
Main Office: (859) 381-3423  
Counseling Office: (859) 381-3435  
Attendance Office: (859) 381-3429  
Fax: (859) 381-3430  
www.henryclay.fcps.net

Home  
of the Blue  
Devils

## Our Mission

To educate and to prepare our students  
for a life of productive citizenship.

### Principal

Paul Little Jr.

### Assistant Principals

J. J. Allen  
Chad Carpenter  
Laura Donovan  
Carlos Pena  
Tiffany Smith



### Henry Clay Counseling Office

(School Counselors divide students by last names.)  
Sharron Wesley-Porter (Ext. 53007) ~ Students A -Ca  
April Cain (Ext. 53010) ~ Students Ce - Goll  
Rachael Howard (Ext. 53069) ~ Students Gom - Kh  
Jordan Tarrence (Ext. 53009) ~ Students Ki - N  
Josh Edwards (Ext. 53006) ~ Students O - SL  
Ashley Harris (Ext. 53176) ~ Students Sm - Z

**Academy:** Catherine Stephens (Ext. 53051)

**Youth Service Center:** Ciera Bowman (Ext. 53094)

**Social Worker:** Tori Mason (Ext. 53012)

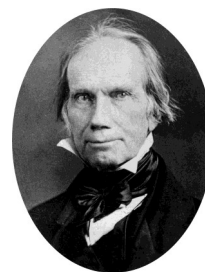
**District Mental Health Specialists:**

Shevan Threats and Shakira Goldsmith-Mason

### **BELL SCHEDULE**

Zero Hour	7:25 - 8:20 a.m.
1st Period Class	8:25 - 9:20 a.m.
2nd Period Class	9:25 - 10:20 a.m.
3rd Period Class	10:25 - 11:20 a.m.
Advisory	11:25 - 11:50
4th Period Class	11:55 - 1:15
1st Lunch - 11:50 - 12:15 2nd Lunch - 12:20 - 12:45 3rd Lunch - 12:50 - 1:15 <i>*This Bell Schedule is tentative and subject to change.</i>	
5th Period Class	1:20 - 2:15 p.m.
6th Period Class	2:20 - 3:15 p.m.

Henry Clay High School was named in honor of the great Kentuckian and national statesman Henry Clay Sr. whose home, Ashland, was nearby. The oldest public high school in Lexington, Henry Clay High originally opened on Main Street in 1928. In the dedicatory address, George Bain said the school would be like a rich sapphire set in pure gold...hence the school colors of **Blue** and **Gold**.



The school moved to its current Fontaine Road facility in 1970 and underwent a complete renovation in 2006. Henry Clay High School is home to a richly diverse student population representing more than 50 countries offering a comprehensive and challenging curriculum for all students. Henry Clay has a long standing tradition of being one of the state's best high schools. In 2021, Henry Clay High School was ranked 13th within Kentucky in the U.S. News & World Report Best High Schools.



## HENRY CLAY HIGH SCHOOL GRADUATION REQUIREMENTS

Students earn 1/2 credit per course per semester or 1 credit per year.

- **English (Language Arts)**..... 4 Credits
- **Mathematics** ..... 4 Credits  
Algebra 1, Geometry, Algebra II, AND one additional math course.
- **Science**..... 3 Credits  
**Option 1:** Intro to Physics > Intro. to Chemistry > Intro. to Biology.  
**Option 2:** Intro to Physics > Adv. Biology > Adv. Chemistry.  
**Option 3\*:** Advanced Biology\*\* > Advanced Chemistry > Advanced Physics OR AP Physics I.  
**\*Once you begin Option 3, you may not change to Option 1 or 2 after the first 10 days of school.**  
**\*\*Advanced Biology—It is recommended that 9<sup>th</sup> grade students meet qualifying MAP testing scores of 240 for MATH and 228 for Reading as well as be enrolled in a math course ABOVE Algebra 1 concurrently.**
- **Social Studies:** 1 Credit Each of Government\*, World History, and U.S. History ..... 3 Credits  
\*Government courses include Citizenship, Government, Integrated Social Studies or Adv. Political Science.
- **Health and Physical Education** (1/2 Credit for each is required.)..... 1 Credit  
This course is typically taken during the Sophomore year OR in Henry Clay's summer school.
- **Fine Arts/Humanities**..... 1 Credit  
Course credit is earned after successful completion (earning a "C" or higher) of the Humanities curriculum either in a stand alone course or by completing two credits in a visual and performing arts course (Art, Music, or Theater Department). Students should work with their counselors to make sure they earn this credit.
- **Electives** ..... 6 Credits

**TOTAL CREDIT REQUIREMENTS..... 22 Credits\***

All students are required to pass a Civics test that is composed of questions from the United States Citizenship and Immigration Services test. Students are required to score 60% or higher and may retake the exam as many times as necessary to pass the test.

Students are highly encouraged to meet the Pre-College Curriculum OR become Career Ready. If a student is not taking a World Language, incoming 9<sup>th</sup> grade students are required to take an elective in one of the Career Pathways. See page 7 for Henry Clay High School Career Pathways.

Students will be provided content meeting the financial literacy standards, demonstrate performance based competency in technology, and receive instruction in essential workplace ethics during their Advisory Period.

### PRE-COLLEGE MINIMUM CURRICULUM FOR ALL KENTUCKY PUBLIC UNIVERSITIES AND COLLEGES

*Research your colleges prior to your junior year to make sure  
you are meeting admission requirements for your selected schools.*



English .....	4 Credits
Mathematics (Algebra 1, Geometry, Algebra II, and one math elective.).....	4 Credits
Science.....	3 Credits
Social Studies.....	3 Credits
Health and Physical Education.....	1 Credit
Art and Humanities .....	1 Credit
World Language (The 2 credits must be of the same language.) .....	Demonstrated Competency or 2 Credits
<i>Completion of Level 2 of a World Language is completion of the pre-college curriculum requirement.</i>	
<b>Recommended Electives:</b> Additional math, science, social studies, world language, fine arts, and a digital literacy course.	



## Recommended Pre-College Curriculum FOR SELECTIVE COLLEGES (Example: Centre, Duke, Wake Forest, Harvard, etc.)

English (including intensive composition courses) .....	4 Credits
Mathematics (4 credits including dual credit and/or AP level) .....	4 Credits
Science (3 credits of laboratory science) .....	3 Credits
Social Studies .....	3 Credits
World Language (3 credits of the same world language) .....	3 Credits
Fine Arts/Humanities.....	1 Credit
Health/PE.....	1 Credit
Electives in any upper level core area .....	3 Credits

CONVERSION CHART FOR ATTENDING A BLOCK SCHEDULE		
Years spent in a 6-period day	Years spent in a Block Schedule	Credits Required
4	0	22
3.5	0.5	22.5
3	1	23
2.5	1.5	23.5
2	2	24
1.5	2.5	24.5
1	3	25
0.5	3.5	25.5
0	4	26



### CAPSTONE PROGRAM

AP Capstone is comprised of two AP courses—AP Seminar and AP Research. Students who earn scores of 3 or higher in AP Seminar and AP Research and on four additional AP Exams of their choosing will receive the AP Capstone Diploma™.

This signifies students' outstanding academic achievement and attainment of college-level academic and research skills. Students who earn scores of 3 or higher in both AP Seminar and AP Research but not on four additional AP Exams will receive the AP Seminar and Research Certificate™.

For more information, go to:  
<https://apcentral.collegeboard.org/courses/ap-capstone>

## GRADUATION PLAN at HENRY CLAY HIGH SCHOOL



**Grade 9**  
English  
Math  
Science  
Government  
Elective  
Elective

**Grade 10**  
English  
Math  
Science  
World History\*  
Health/PE  
Elective

**Grade 11**  
English  
Math  
Science  
U.S. History  
Elective  
Elective

**Grade 12**  
English  
Math  
Elective  
Elective  
Elective  
Elective



\*Arts and Humanities can be taken online through a Canvas platform during World History and English 3 OR students can successfully complete with a "C" or higher any TWO visual and/or performing arts courses.

## SCHEDULE CHANGES AND CREDITS



- **IMPORTANT!!!!** Students can change an elective during the first 5 days of the semester if there is space, but options are limited because classes are offered based on student demand in the spring. Some courses reach their capacity and cannot accept additional students. Most all courses are offered for a **full-year**. Students cannot switch or change classes in the middle of the semester or after the 1st semester for full-year courses. Counselors cannot grant requests for a teacher or hour change after the start of the first day of school.
- Henry Clay is the only high school in Fayette County on a 6-period day. Henry Clay's schedule provides students with the opportunity to earn a total of 25 credits (6 periods X 4 years plus the embedded Arts/Humanities credit). Marching band is offered at 7:25 a.m. or after school giving these students a 7-period day. Students may also take Health/PE during the summer giving an opportunity for more credits.
- Students receive a 1/2 credit for each course successfully completed each semester with a 60% (D) or better. **Grades are based on each semester. Fall semester grades and spring semester grades are not averaged together.** However, KEES money is based on the average unweighted GPA for both fall and spring semesters.
- Students may request a Level change (AP to Advanced or Advanced to General) at any time during the first 12 weeks or after the completion of the first semester if room is available in the receiving class. **Grades from the previous class transfer to the new class with the student if the change is made during the first 12 weeks. Students MUST see their counselor prior to the last day of the 12 weeks as reported on the Grade Reporting Periods calendar.**

## SCHEDULING TIPS

1. **ENGLISH:** Students should be aware of the recommended and required summer readings in AP courses. The advanced curriculum is more rigorous and requires more outside completion of work and reading. AP levels are taught at a college level pace. Incoming freshmen have the choice of general or advanced English I or II.
2. **MATH:** Freshmen taking any course above Algebra 1 **MUST** be enrolled in the Advanced level. It is recommended that students have a 245 on the MAP Math test and successfully completed Envision Algebra I before enrolling in Adv. Geometry.
3. **SCIENCE:** For Advanced Biology, a MAP Math score of 240 and a MAP Reading score of 228 is strongly recommended. It is also suggested they be enrolled in a math course higher than Algebra 1. There is a substantial difference in the math involved in Advanced Chemistry and Advanced or AP Physics than that of the introductory courses.
4. **SOCIAL STUDIES:** All 9th grade students take Advanced Government or AP Government & Politics. Since AP Government & Politics is taught at a college level, it is strongly recommended for students to have a MAP Reading score of 233, a strong work ethic, maturity, and an interest in government. Students should also have the recommendation of their current 8th grade social studies teacher. AP classes require daily reading and homework.
5. **WORLD LANGUAGES:** Students who successfully complete the second level of a world language are considered to have completed the pre-college curriculum. Students wishing to take Level 2 or above for the first time in high school are encouraged to take the STAMP (Standards-based Assessment and Measurement of Proficiency) which will help determine a student's placement. The cost and dates for testing will be announced.
6. **ELECTIVES:** Students should be very serious when selecting an elective. The master schedule and staffing are determined by student requests in the spring. **Changes may not be possible because of capacity. Electives cannot be changed after the 5th day of school. All electives are year-long courses.** See the "Schedule Changes and Credits" on the previous page.

## GRADING/REPORTING and INFINITE CAMPUS

- High schools are on a semester system (18 weeks) and will receive final grades at the end of each semester. **Progress reports are issued to students every 6 weeks. Final semester grades are mailed home to parents.** To register or login to an Infinite Campus account, go to [www.fcps.net](http://www.fcps.net) and click Students then Infinite Campus Portal.
- Students are awarded 1/2 credit per semester in grades 9—12 upon successful completion of a one-semester course. Students who fail a semester course and wish to remove the "F" from the GPA calculation may do so by:
  1. Repeating the course during a regular term for general, advanced, and AP levels.
  2. Taking the course through e-School or credit recovery IF it is a general level course.
 The repeated course must be at the same level or higher to remove the "F" from the GPA calculation.
- **The following criteria or some combination is used when determining the final grade:**
  1. **Formative (45% of the Grade):** Assigned class work which may include participation, homework, seatwork, note-taking, discussion, quizzes, and/or portfolios and notebooks.
  2. **Summative (45% of the Grade):** Test/Assessments, quizzes, and Special Projects
  3. **Final Exam (10% of the Grade):** End of Course Assessments or Final Exams.
- **High School Grading Standards:** Students will have their GPA calculated on a 4.0 system. Students are no longer ranked at Henry Clay High School.
- **Calculating the GPA:** To calculate a GPA, divide the total amount of quality points earned by the total credits attempted. Most public colleges and universities use the unweighted GPA for admissions and scholarships. Please make sure you investigate your options and know the criteria of the colleges in which you are interested in attending.



Transcript Grade	Beginning 2020-2021	Previous Percentage Scale	Unweighted Quality Points
A.....	90% - 100%	92% - 100%	4.0
B.....	80% - 89%	83% - 91%	3.0
C.....	70% - 79%	74% - 82%	2.0
D.....	60% - 69%	65% - 73%	1.0
F.....	0% - 59%	0% - 64%	0

- **How to be Promoted to the Next Grade Level:** Grade promotion is based on credits. Each class is worth 1/2 credit per semester giving students the opportunity to earn 6 credits per year (1/2 credit X 6 classes X 2 semesters = 6). Students must earn 60% or higher for the semester to earn credit. Students are required to have 22 credits to graduate—see graduation requirements on Page 1.



Before the first day of school, students must earn:	to be Promoted to:
5 Credits	10th Grade (Sophomore Level)
10 Credits	11th Grade (Junior Level)
16 Credits	12th Grade (Senior Level)





# Get Paid for Good Grades

## Kentucky Educational Excellence Scholarship

Students Must Have a Social Security Number in Infinite Campus to Receive KEES Money

Every year you attend a certified Kentucky high school and earn at least a 2.5 GPA, you will earn a KEES award ranging from \$125 (for a 2.5 GPA) to \$500 (for a 4.0 GPA) for Kentucky college fees. That's not all! You may also earn bonus money for a 15+ on the ACT. When combined with your GPA awards, that means you may earn up to \$2,500 for each year of college!

KEES AWARD AMOUNTS			
GPA	BASE AMOUNT	ACT SCORE	BONUS AMOUNT
2.50	\$125	15	\$36
2.60	150	16	71
2.70	175	17	107
2.75	187	18	143
2.80	200	19	179
2.90	225	20	214
3.00	250	21	250
3.10	275	22	286
3.20	300	23	321
3.25	312	24	357
3.30	325	25	393
3.40	350	26	428
3.50	375	27	464
3.60	400	28+	500
3.70	425	Amounts may change based on funding. Only AP and dual credit courses are weighted.	
3.75	437		
3.80	450		
3.90	475		
4.00	500		



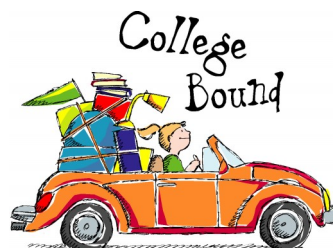
KHEAA will post KEES awards online at the end of each school year. Create a Zip Access user ID and password to access your data at [kheaa.com](http://kheaa.com) for the first time. If no record is found or if your data is incorrect, you should contact your guidance counselor. You must earn a 2.5 cumulative GPA your first year in college and a 3.0 cumulative GPA thereafter to retain your full KEES award.

All information on this page was obtained from the Kentucky Higher Education Assistance Authority Education Guide. For more information go to [www.kheaa.com](http://www.kheaa.com) or call 800-928-8926.

### HOW MUCH WILL YOU GET FOR COLLEGE?

If you receive a KEES award for your freshman year, enter your final GPA and the award amounts on the line. For future years, enter your final GPA or predict your GPA and highest ACT score, filling in the blanks. Add up your amounts, and you can estimate what your total award will be to help you pay for each year in a Kentucky college.

	GPA	Amount
Freshman Year	_____	\$_____
Sophomore Year	_____	+\$_____
Junior Year	_____	+\$_____
Senior Year	_____	+\$_____
Highest ACT Score	_____	+\$_____
Total Estimated Award =		\$_____



## TESTING AT HENRY CLAY

Students should have at least a 230 on the MAP Reading or an 18 on the ACT Reading to be eligible for programs such as eSchool or night school because of their independent online expectations. These scores also provide information regarding college readiness for classes that are taught on a more rigorous level.

- The PSAT is used in the 11th grade as a qualifying score for the National Merit Scholarship Program. Students in the 11th grade pay to take the PSAT. Registration is in early September.
- Students in the 10th and 11th grade take the ACT in the spring for free. This is subject to change based on state initiatives.
- AP Testing is administered in May each year. Students should see their AP teacher for registration information in the fall.
- Students may register at [www.actstudent.org](http://www.actstudent.org) for national ACT tests. Check the website for dates and deadlines.
- Students may register at [www.collegeboard.org](http://www.collegeboard.org) for national SAT tests. Check the website for dates and deadlines.
- The ASVAB is a great measuring tool for strengths, weaknesses, and potential jobs suitable for you. Students are not required to join the military or have any interest in the military. It is a timed multi-aptitude test which identifies areas that need improvement.

**ACT's College Readiness Benchmark Scores to determine college readiness:**  
**English—18      Math—19      Reading—20      Science—24**

## ADDITIONAL OPPORTUNITIES FOR COLLEGE CREDIT



**OPPORTUNITY MIDDLE COLLEGE:** Opportunity Middle College is a partnership between Fayette County Public Schools and Bluegrass Community Technical College (BCTC). Students have the opportunity to enroll in both college and high school courses earning both high school and college credit for these courses. All courses are taught at the BCTC campus and students do not attend classes at Henry Clay's campus. Students who will be a junior or senior next fall are eligible to apply. Fees may be required. See your high school counselor for an application.

**HENRY CLAY "U":** An opportunity for Henry Clay students to get a jump-start in college by taking classes 1/2 of the day at Henry Clay and 1/2 of the day at BCTC in person or online. **PREREQUISITE:** 1) Students must be in the 12th grade. 2) Have 3.0 unweighted GPA OR Score the college readiness benchmarks of English - 18, Math - 19, and Reading - 20 on the ACT. AND 3) Complete all application requirements before the deadline.

**WESTERN KENTUCKY UNIVERSITY CAROL MARTIN GATTON ACADEMY OF MATHEMATICS AND SCIENCE:** The Gatton Academy at WKU is a residential high school for juniors and seniors who have demonstrated a desire to pursue advanced careers in science, technology, engineering, and math (STEM) fields. Students live in Schneider Hall on the WKU campus and attend classes at WKU earning both college and high school credit. A minimum ACT math score of 22 or SAT math score of 520 is required. Visit [www.wku.edu/academy](http://www.wku.edu/academy) for additional information and for an application. **All materials must be submitted by February 1.**



**MOREHEAD STATE UNIVERSITY CRAFT ACADEMY FOR SCIENCE AND MATHEMATICS:** The Craft Academy at Morehead State University is a unique residential educational opportunity for gifted and talented juniors and seniors focusing on math and science courses while engaging in electives in arts and humanities. Students live in a residence hall designed for high school-aged students. A minimum ACT math score of 22 or SAT math score of 520 is required. Visit [www.moreheadstate.edu/craft-academy](http://www.moreheadstate.edu/craft-academy) for more information and for an application. **All materials must be submitted by February 1.**

## The Liberal Arts Academy at Henry Clay High School

The Liberal Arts Academy at Henry Clay challenges its students in all disciplines with required Academy courses that are specially designed or adapted for the Academy's gifted and talented population. These courses combine acceleration, differentiation and enrichment to stimulate and extend student learning.

For its freshmen class, the Liberal Arts Academy accepts qualified students each year through a district application process. Parents or students must complete an online application through the Office of Gifted and Magnet Education by an early October date. Eligibility for the Liberal Arts Academy requires scores in the 9<sup>th</sup> stanine (96<sup>th</sup> percentile or higher) on nationally normed, math and reading achievement tests and a cognitive abilities test. Students must also have a supporting score in the 8<sup>th</sup> stanine (89<sup>th</sup> percentile or higher) on one additional nationally normed math test and reading test to be eligible. Students within the Accelerated Clusters at Winburn Middle or Tates Creek Middle Schools are automatically eligible for the Liberal Arts Academy.



The Academy curriculum is rigorous and requires several AP courses. Students have the option to pursue the AP Capstone Diploma or the AP Capstone Research Certificate. To view the most up to date Academy requirements and course of studies, please visit the Liberal Arts Academy web site at [www.fcps.net/Page/9203](http://www.fcps.net/Page/9203) or email Catherine Stephens at [catherine.stephens@fayette.kyschools.us](mailto:catherine.stephens@fayette.kyschools.us) or call at (859) 381-3423 Ext. 1133.

### ACADEMY INDIVIDUAL GRADUATION PLAN for the MEDALLION

Only Academy Students May Enroll in Academy Labeled Courses

	Grade 9	Grade 10	Grade 11	Grade 12
1	Academy English	Academy AP Seminar (English)	Academy AP Language	Academy AP Literature
2	Advanced Math	Advanced or AP Math	Advanced or AP Math	AP or Dual Credit Math
3	Academy Biology	Academy Chemistry	AP Physics	AP Research
4	Academy AP US Government	Academy AP World History	Academy AP U.S. History	Elective: AP Level
5	World Language	World Language	World Language	Health/PE*
6	Elective:	Elective:	Elective:	Elective:

\* Health/PE can also be completed during summer school between the student's 9th and 10th grade year.

The Academy Medallion requirements take effect starting with the Class of 2019.

- Students must be prepared to take Adv. Geometry in the 9th grade. If students do not have Algebra 1 on their middle school transcript, they must take both Algebra 1 and Advanced Geometry their freshman year.
- Seniors must be in a college-credit bearing math class. AP Computer Science will only fulfill the math requirement for senior year if students have already taken AP Calculus AB.
- Students must take three consecutive years of the same world language. All students are strongly encouraged to take through the AP level.
- All students must earn a "C" or higher each semester of each class in order to earn the Academy medallion. Students failing to earn a "C" may choose to repeat the class and it must be taken at the same level.
- All students must take at least one AP elective course that does not fulfill their other requirements for the Academy medallion (i.e. A student who will take the AP level of their world language to meet their third year requirement may not also count that as an AP elective.)
- Students must complete 20 hours of community service annually.
- Student must take the PSAT, ACT or SAT every year (except senior year) and provide proof of testing to the Academy Facilitator.
- Students must attend the monthly Academy class meetings. Students who have an unexcused absence must complete an additional two hours of community service to maintain medallion eligibility.

# PREPARATIONS FOR COLLEGE ADMISSIONS AND CAREER READINESS

## 9th and 10th Grade

- Design a college and/or career preparatory program of study.
- Maintain a high grade point average (2.5 or above is recommended).
- Take the PSAT to determine areas of academics that need improvement.
- Start developing a resume of awards, extracurricular activities, clubs, volunteer experiences, and work experiences.
- Athletes should become familiar with NAIA and NCAA requirements.

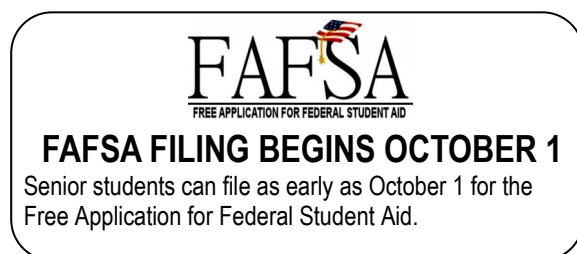


## 11th Grade

- September
  - ✓ Register for the PSAT to qualify for National Merit Scholarships and/or Governors Scholars Program.
  - ✓ Attend Junior Meetings with your counselor.
- October
  - ✓ Take the PSAT to prepare for the SAT, Governor's Scholar Program, and for the National Merit Scholars Program.
  - ✓ Attend the College Fair at Heritage Hall.
- During the school year:
  - ✓ Update and maintain your resume.
  - ✓ Request admission packets and information from colleges and keep a list of colleges.
  - ✓ Determine required college entrance tests, minimum GPA requirements, and the application process.
  - ✓ Visit [www.kheaa.com](http://www.kheaa.com) and click on "Publications" to find the Getting Ready handbook for high school juniors.
- February—Juniors will meet with their counselors about:
  - ✓ Senior year scheduling.
  - ✓ Summer enrichment opportunities.
  - ✓ Post-secondary possibilities.
- Spring—Take the ACT.
- April or June—Take the ACT and/or SAT.
- May—AP testing for AP classes.
- Athletes should register with NCAA or NAIA at the end of their junior year and make sure they are on track.

## 12th Grade

- August
  - ✓ Register for the September ACT or October SAT to ensure your scores are delivered to colleges prior to Dec. 1.
  - ✓ Make sure you are taking a full academic load throughout your senior year. Final admission to some colleges is dependent on maintaining a strong academic standing.
  - ✓ Finalize college applications and make a list of deadlines.
  - ✓ Familiarize yourself with the scholarship listing on the Henry Clay website.
- September
  - ✓ Attend Senior Meetings with your counselor.
  - ✓ Prepare and get ready to file your FAFSA.
  - ✓ Start attending sessions with college representatives. A sign-up book is located in the counseling office and on the Henry Clay counseling webpage.
  - ✓ Determine if your college choices use the Common Application ([www.commonapp.org](http://www.commonapp.org)). If you are only applying to one college, do not use the Common Application.
- October
  - ✓ **October 1 - FAFSA can be submitted.**
  - ✓ Attend College Fair at Heritage Hall.
  - ✓ Participate in College Application Week at Henry Clay.
- November—Finalize all transcript requests and recommendations before November 10 for the December 1 deadlines. Use Parchment at [www.parchment.com](http://www.parchment.com) to request transcripts electronically.
- December—before December 5—Submit transcript requests and recommendation requests for January deadlines.
- January—Go to [www.parchment.com](http://www.parchment.com) to request Mid-Year Reports to be sent to colleges.
- February—If you have decided on which school to attend, notify the college of your decision and let any other colleges that have accepted you know about your decision.
- April—Follow up on your financial aid packages and compare lenders if you will need student loans.
- May—Remember the May 1 deadline to notify colleges of your decision if necessary.
  - ✓ AP testing for AP classes.
  - ✓ Let the counseling office know of your college decision and scholarships received. This will be completed on a form provided to you in your English class during May.
  - ✓ Go to [www.parchment.com](http://www.parchment.com) to request final transcripts to be sent to your school of choice before August 1.
  - ✓ Write thank-you notes to those who helped you through the process.





# HENRY CLAY HIGH SCHOOL PATHWAYS

The Henry Clay Pathways combine academics with exposure to careers to give students an early opportunity to gain experience that will assist in the transition to college, the military, or a career. Each pathway represents a predicted need for future jobs. Students engage in a sequence of classes followed by internships that lead to an Industry Certification, or Articulated Credit for college. Upon completion of the pathway program, students are awarded a graduation cord and a career readiness certificate from the Kentucky Department of Education.



## BUSINESS AND MARKETING

### E-COMMERCE

Digital or Computer Literacy  
Principles of Marketing  
Entrepreneurship or Ethical Leadership or Personal Finance  
Business Co-op

### MANAGEMENT AND ENTREPRENEURSHIP

Digital or Computer Literacy  
Entrepreneurship  
Principles of Marketing or Ethical Leadership or Personal Finance  
Intro. to Management and Business Co-op



## HOSPITALITY, TRAVEL, TOURISM, & RECREATION (Complete the First 4 Courses in this List)

Foods and Nutrition  
Adv. Foods and Nutrition  
Principles of Hospitality  
Principles of Marketing  
Entrepreneurship or Ethical Leadership  
Co-op for HTTR



## COMPUTER PROGRAMMING (Complete 4 Courses)

Digital or Computer Literacy  
Intro. to Programming  
AP Computer Science Principles  
AP Computer Science  
JAVA II



## AUTOMATION ENGINEERING (Complete 4 Courses)

Engineering I  
(Required and Preferred 1st Course)  
Unmanned Aircraft  
Robotics Engineering  
AP Computer Science Principles  
OR AP Computer Science



## MILITARY

Army JROTC 1  
Army JROTC 2  
Army JROTC 3  
Army JROTC 4



## FCPS TECHNICAL CENTERS

Descriptions of technical center programs/pathways can be found on page 16 and on their individual websites.

### Eastside

[www.eastside.fcps.net](http://www.eastside.fcps.net)

### Locust Trace

[www.locustrace.fcps.net](http://www.locustrace.fcps.net)

### Southside

[www.southside.fcps.net](http://www.southside.fcps.net)

# Henry Clay High School Summer Reading for 2023-2024

Required reading **MUST** be read prior to the first day of the fall semester. Keep copies of the works accessible. **Students will be tested on summer reading during the first week of school. Please remember that grades earned on summer reading tests will follow students who choose to transfer to a lower level English class.** Students who move from lower level classes to levels that require summer readings or newly enrolled students will have one month from the date of transfer to complete all required summer readings and assignments.



## SOPHOMORES

**\*AP World History for Academy Students—Summer reading of 1493: Uncovering the New World Columbus Created by Charles Mann is required. Students will take a 55-question multiple choice test the first week of school.**

## JUNIORS

**\*AP Language and Composition for Non-Academy Juniors—ONE required book: David and Goliath by Malcolm Gladwell. Be prepared to analyze how the author's rhetorical choices contribute to the purpose and meaning of the work.**

**\*ACADEMY AP Language and Composition—**There are no recommended or required readings.

## SENIORS

**\*AP English Literature for Non-Academy Seniors —TWO required readings: 1. The Color Purple by Alice Walker and 2. Hamlet by William Shakespeare. Another recommended reading, but not required, is The Great Gatsby by F. Scott Fitzgerald.**

**\*ACADEMY AP English Literature & Composition—Students must perform the following tasks:**

- A) Select, read, and annotate one pair of books, both a classic and a work of contemporary fiction, from the list below **AND**
- B) Complete the multi-genre assignment found on the HCHS Media Center resource page. Students can also pick up the complete handout with the rubric in the counseling office or from Mrs. Stephens, the Academy Coordinator.

- 1. Things Fall Apart by Chinua Achebe **AND** The Poisonwood Bible by Barbara Kingsolver
- 2. A Passage to India by E.M. Forster **AND** The Sympathizer by Viet Thanh Nguyen
- 3. The Stranger by Albert Camus **AND** Extremely Loud and Incredibly Close by Jonathan Safran Foer.

**NOTE WHEN SELECTING COURSES:** The master schedule is determined by student selection in the spring. It is **VERY** important that students make their selections carefully. Once the master schedule is developed, students cannot expect to change their course selections after April because of staffing and course offerings. Most courses are a full year unless otherwise stated as a one-semester course.

# COURSE DIRECTORY AND DESCRIPTIONS

## ENGLISH and LANGUAGE ARTS

**ENGLISH 1**—Integrates composition, literature and language studies.

**ADVANCED ENGLISH 1:** This course will allow students to explore what it means to come of age amidst common teenage struggles through fiction, nonfiction, poetry, and drama incorporating extensive experience through group work and individual critical thinking. Handbooks will be given to each student for home study/work. **PREREQUISITE: Language Arts Teacher Recommendation.**

**ENGLISH 2**—Integrates the study of literature, composition, vocabulary, and language usage with a strong focus on helping students develop effective oral, digital literacy, and reading skills. Student will build their capacity for narrative, descriptive, expository, and persuasive writing.

**ADVANCED ENGLISH 2:** This course integrates the study of literature, composition, vocabulary, and language usage with a strong focus on helping students develop effective oral communication, digital literacy, and reading skills. Students will build their capacity for narrative, descriptive, expository, and persuasive writing. The curriculum is rigorous with activities and assessments to continually challenge students.

**AP SEMINAR (Academy and Non-Academy) for 10th Grade Students**—Fulfills the requirements of the AP Capstone Program. Additionally, this course is meant to be foundational for all other AP courses, including AP Language and Composition and AP Research. Students will implement multiple research methodologies and consider multiple points of view to develop deep understanding of complex issues. **PREREQUISITE: Recommendation of 9th grade English teacher and a passing grade in English I.**

**ENGLISH 3**—Integrates American literature, composition, and language. Oral and written activities will be emphasized as a means of learning.


**ADVANCED ENGLISH 3**—Introduces students to American literature and ideas and exposes them to the types of writing (especially that of the research process) expected of them after high school. Preparation for the state-mandated ACT is included. Class assignments including reading are nearly always completed outside of class. Students in this course will have mastered skills outlined in English I and II.

**AP ENGLISH LANGUAGE AND COMPOSITION for JUNIORS**—Comparable to a college composition class, the course provides training for the skilled reading of prose written in a variety of periods, disciplines, and rhetorical contexts. The course is a preparation for the Advanced Placement Language and Composition Examination. **SUMMER READING IS REQUIRED.**

**ENGLISH 4**—Integrates English and world literature, composition, and language. Writing to learn and flexibility in writing will be emphasized.

**ADVANCED ENGLISH 4**—Expect more in-depth assignments, reading, and independent work at a faster pace than the English 4 course described above. Basic skills to progress to formal writing, intensive vocabulary study, thematic literary study, and independent higher level reading are expected. **PREREQUISITE: Recommendation of English 3 teacher is requested.**

**AP ENGLISH LITERATURE AND COMPOSITION for SENIORS**—Provides for a careful reading of literary works for the purposes of developing critical standards for the independent sensitivity to literature as shared experience. The course is a preparation for the Advanced Placement Literature and Composition Examination. **SUMMER READING IS REQUIRED.**

 **\*ENGLISH 101 (DUAL CREDIT)\***—This college course focuses on academic writing. Provides instruction in drafting and revising essays that express ideas. This course includes reading critically, thinking logically, addressing specific audiences, researching and documenting sources. CREDIT: 1 high school credit is given for English 101 and 3 hours of college credit is awarded from BCTC upon successful completion of a “C” or better. **PREREQUISITE: ACT score of 18 or higher in English or a 3.0 overall GPA and a 20 or higher in Reading or a 3.0 overall GPA. A completed BCTC application is required. Students must purchase their own textbook.**

**\*ENGLISH 102 (DUAL CREDIT)\***—Emphasizes argumentative writing. Includes continued instruction and practice in reading critically, thinking logically, and researching and documenting credible academic sources. CREDIT: 1 high school credit is given for English 102 and 3 hours college credits are awarded from BCTC upon successful completion of a “C” or better. **ENG 102 PREREQUISITE: Successful completion with a “C” or better in English 101.**

**\*KHEAA dual credit scholarship will pay tuition for two dual credit courses per year for juniors and seniors. Students who take more than two dual credit courses during one school year will pay tuition for the additional classes. A TEXTBOOK FEE is required for all dual credit college courses. College credit of 3 hours is awarded from BCTC upon successful completion of a “C” or better for each dual credit class.**

## ENGLISH and LANGUAGE ARTS ELECTIVES

**AFRICAN-AMERICAN LITERATURE:** Black literature from its earliest origins in Africa to the present United States will be explored. Students will discuss the African literary tradition and learn to recognize major Black authors. Students will critique texts as part of a larger cultural debate.

**ADVANCED AMERICAN HERO IN FILM**—This course introduces students to the basics of film analysis, cinematic formal elements, genre, and narrative structure and helps students develop the skills to recognize, analyze, describe and enjoy film as an art and entertainment form.

**BROADCAST JOURNALISM**—Production of news, interviews, academics, and sporting events in and around Henry Clay. Students learn skills and techniques for both in front of and behind the camera. This class will be responsible for delivering live news to the school five days a week and will require students to work outside the school day when covering sporting events. **Advanced Broadcast Journalism 2** is a continuation of 1 with more responsibilities.

**ADVANCED DEBATE**—In **Advanced Debate I**, advanced research techniques are used to produce documentation affirming and negating specific topics. They will use cases to debate fellow students. Note-taking skills are very important for this course. **Advanced Debate 2** is a continuation of Debate I. Students will do more in-depth study of cases and present more in-depth debate with fellow students. **PREREQUISITE: A grade of “C” or higher in Debate I.**

**INTRO TO THEATRE (DRAMA)** - The 1st semester focuses on theater production from a technical aspect. The elements of design, staging, technical aspects, and other physical features of drama are studied. The 2nd semester focuses on the techniques of acting with stage experience as an emphasis. **THEATRE 2** is a continuation of Drama 1. This second year course offers serious drama students an opportunity to refine their acting skills and broaden performance repertoires. It is designed for active participation. **PREREQUISITE for Theatre 2 is successful completion of Drama 1.**

**JOURNALISM (NEWSPAPER)**—Students study advertising, photography, graphic design, layout and editing. Students will produce the school newspaper. Students may continue their work with the school newspaper in **Advanced Journalism 2 and 3** with the recommendation of the teacher.

**SCIENCE FICTION LITERATURE**—This course is for students with active imaginations who are interested in the science fiction and fantasy genres. Students will explore the history and development of the Sci-Fi genre with an emphasis on the Golden Age spanning from the Pulp Era of the 1920’s to the rise of Cyber Punk in the 1980’s. A variety of assessments will be used including journaling, creative writing, analytical writing, quizzes, tests, projects, and presentations.

**TV RADIO PRODUCTION**—Focuses on the production and evaluation of television programming and covers the basics of broadcast journalism as well as storyboarding, script writing and editing, oral communication skills, equipment operations, and video editing. **A \$10 fee is required.**

**ADVANCED TV RADIO PRODUCTION 2**—Designed to provide motivated and experienced students leadership opportunities in the form of directing and producing various creative projects using multimedia equipment and software. **PREREQUISITE: Successful completion of the Radio/TV Production, an individual project, letter to teacher explaining reason for pursuing education in Radio/TV Production, and teacher approval. A \$10 fee is required.**

**YEARBOOK 1, ADVANCED YEARBOOK 2, and ADVANCED YEARBOOK 3**—Offers extended in-depth, journalistic experience in yearbook production. General language skills will be refined and the techniques of yearbook production will be practiced with the yearbook as the final product.

## MATHEMATICS



**ALGEBRA I**—This course is for 9th grade students who have successfully mastered middle school math content.

**GEOMETRY**—Topics include constructions, inductive/deductive reasoning, points, lines, planes, angles, triangles, planar figures, similarity/congruence, circles, area, volume, coordinate geometry, and transformation. **PREREQUISITE:** Successful completion of Algebra I.

**ADVANCED GEOMETRY**—Taught at an accelerated pace for students with a high degree of proficiency in abstract mathematical ideas. This course includes the skills and concepts of Geometry but will differ in the approach and include rigorous formal proof. **PREREQUISITE:** Successful completion of Envision Algebra I and a recommended score of 245 on the Math MAP test.

**ALGEBRA II**—Expands on the mathematical concepts of Algebra I and Geometry. **PREREQUISITE:** Successful completion of Algebra I and Geometry.

**ADVANCED ALGEBRA II**—Includes skills and concepts of Algebra II, but covered in greater depth. Taught at an accelerated pace for students with a high degree of proficiency in abstract mathematical ideas. **PREREQUISITE:** Successful completion of Envision Advanced Geometry.

**ALGEBRA 3 / TRIG**—For juniors or seniors who have successfully completed the Algebra I/Geometry/Algebra 2 sequence and intend to take a college math course. Topics include relations and functions (including circular, trigonometric, etc.), complex numbers matrices, sequences, series, and probability. **PREREQUISITES:** Successful completion of Geometry AND Algebra II.

**PROBABILITY AND STATISTICS**—For seniors wishing to study probability and statistics in a project and simulation environment. **PREREQUISITE:** This course is for 12th grade students who have already received credit for Algebra I, Geometry, and Algebra 2.

**ADVANCED PROBABILITY AND STATISTICS**—An Advanced class for college bound seniors to be prepared for College Statistics and to understand the collection and use of data in real life examples and situations.

**STATISTICAL ANALYSIS IN SPORTS**—This course is designed for students who want to study statistics and have an interest in professional sports. The class will teach statistical methods as well as several applications that are used in the decision making process for professional sports organizations.

**ADVANCED PRE-CALCULUS**—For students who plan to take a regular calculus course in high school or college. Includes topics traditionally taught in Trigonometry and Analytic Geometry. **PREREQUISITE:** Successful completion of Advanced Geometry AND Advanced Algebra II.

**ADVANCED CALCULUS I**—For students who have successfully completed Pre-Calculus. This course covers the material usually taught in differential and integral calculus. **PREREQUISITE:** Successful completion of Advanced Pre-Calculus.

**AP CALCULUS AB and BC**—Advanced Placement courses covering the material usually taught in differential and integral Calculus. Students who complete the course may take the Advanced Placement Exam in Calculus to attempt to earn college credit. **PREREQUISITE:** AP Calculus AB requires successful completion of Advanced Pre-Calculus and a recommended ACT math score of a 24 or higher. AP Calculus BC requires successful completion of AP Calculus AB AND a passing score of 3+ on the AP Calculus AB exam. A summer assignment is also required for AP Calculus AB.

**AP STATISTICS**—This Advanced Placement course includes study of distributions, relations in categorical data, random variables, use and abuse of tests and inference for linear regression. **PREREQUISITE:** A preferred ACT Math score of 24, and successful completion of Adv. Algebra II.

\***MATH 111—Contemporary Math (Dual Credit)\***—Provides an introduction to concepts and applications of mathematics, with examples drawn from such areas as voting methods, consumer finance, graph theory, number theory and game theory. This course does not serve as a prerequisite for any calculus course. This is a college level course worth 1 credit in high school math and 3 college credit hours at BCTC. **PREREQUISITE:** Students with two years of high school algebra and a Math ACT score of 19 or minimum 3.0 GPA. BCTC Application and Textbook Fee is Required.

\***MATH 150—College Algebra (Dual Credit)\***—For seniors which includes selected topics in algebra and analytic geometry developing manipulative algebraic skills required for successful calculus study. This is a college level course providing the successful student with 1 credit in high school math and 3 college hours at BCTC. **PREREQUISITE:** Successful completion of Algebra II or higher math with a “C” or better, minimum ACT Math score of 22 or minimum 3.2 GPA, and recommendation of high school math teacher. Students planning to take AP Calculus are not permitted to take this course. BCTC Application and Textbook Fee is Required.

\***MATH 170—Elementary Calculus and its Applications (Dual Credit)\***—This senior course is an elementary college calculus course to be taken the 2<sup>nd</sup> semester of the Dual Credit route. Taking this class and MA 150 will fulfill the math requirement for many majors at UK. **PREREQUISITE:** Students with successful completion of Math 150 with a “C” or higher. Textbook Fee is Required.

\***KHEAA dual credit scholarship** will pay tuition for two dual credit courses per year for juniors and seniors. Students who take more than two dual credit courses during one school year will pay tuition for the additional classes. A TEXTBOOK FEE is required for all dual credit college courses. College credit of 3 hours is awarded from BCTC upon successful completion of a “C” or better for each dual credit class.

## SCIENCE

**INTRO TO PHYSICS WITH EARTH/SPACE**—Provides a foundation for further study in high school science. Physics is the study of motion and energy. A \$5 lab fee is required.

**INTRO TO CHEMISTRY WITH EARTH/SPACE**—Chemistry is the study of matter; it’s properties and how it changes both from a qualitative and quantitative viewpoint. **PREREQUISITE:** Successful completion of Intro to Physics with Earth/Space and Algebra 1. A \$5 lab fee is required.

**INTRODUCTION TO BIOLOGY WITH EARTH/SPACE**—Biology is the study of living organisms and how they interact with their environment. **PREREQUISITE:** Successful completion of Intro to Chemistry with Earth/Space. A \$5 lab fee is required.

**ADVANCED BIOLOGY WITH EARTH/SPACE**—Biology is the study of living organisms and how they interact with their environment. **PREREQUISITE:** A MAP reading score of 228, MAP math score 240 and successful completion of Algebra 1. A \$5 lab fee is required.

**ADVANCED CHEMISTRY WITH EARTH/SPACE**—See Intro to Chemistry above. This course is taught at an accelerated pace with high math expectations. **PREREQUISITE:** Successful completion of Advanced Biology with Earth Space AND Algebra 1. A \$5 lab fee is required.

**ADVANCED PHYSICS WITH EARTH/SPACE SCIENCE:** Studies include topics and physics and earth/space science providing a foundation for further study in high school science. Physics is the study of motion and energy. **PREREQUISITE:** Successful completion of Advanced Chemistry with Earth/Space Science. A \$5 lab fee is required.



## SCIENCE ELECTIVES

**ASTRONOMY**—This course introduces you to the composition and structure of the universe. Astronomy is the scientific study of the contents of the entire Universe. This course provides a study of the universe and the conditions, properties, and motions of bodies in space. The content includes historical astronomy, astronomical instruments, the celestial sphere, the solar system, the earth as a system in space, the earth/moon system, the sun as a star, and stars.

**ENVIRONMENTAL SCIENCE**—This one-semester course, typically taken with Forensic Science, introduces physical, ecological, social and political principles of environmental science. This course shows how ecological realities and the material desires of humans often clash, leading to environmental degradation and pollution. **PREREQUISITE:** Successful completion of Biology or Chemistry or taking concurrently. A \$5 fee per is required.

*Science electives continued on next page.*



## SCIENCE ELECTIVES Continued...

**FORENSIC SCIENCE**—This one-semester course is rich in exploration and lab investigation which applies many disciplines of scientific study to solve crimes. **This course is typically taken with Environmental Science. PREREQUISITE: Successful completion of Biology or Chemistry or taking concurrently.**

**ADVANCED HUMAN ANATOMY**—Study of the anatomical and physiological functioning of human body systems from the cellular level to the organism level. Examples may include but are not limited to the skeletal system, muscular system, respiratory system, nervous system, circulatory system, cellular metabolism etc. This course is designed for the college bound junior or senior who is interested in pursuing a career in health sciences or health related fields such as medicine, physical therapy, nursing, pharmacy, and so on. **PREREQUISITE: Successful completion of Biology with a grade of at least 78%. Students who may suffer from allergies to animals such as cats or rabbits should consult with the instructor prior to enrolling. A \$15 lab fee is required.**

**ADVANCED HEREDITY**—This one-semester course is an extension of the heredity/genetic concepts introduced in biology. Topics include mendelian and non mendelian inheritance, Chromosome Structure, DNA replication, transcription, and translation. **PREREQUISITE: Successful completion of Biology with a grade of at least 78% and successful completion of Chemistry or take concurrently. Credit: ½ credit 1<sup>st</sup> semester. A \$10 lab fee is required.**

**ADVANCED MICROBIOLOGY**—This is one-semester laboratory based course that is an extension of the concepts experienced in Advanced Biology. Students will investigate cellular function by studying cell structures. Proper laboratory techniques are stressed as infectious diseases and their relationships between microorganisms and humans will be studied. **PREREQUISITE: Successful completion of Biology with a grade of at least 78% and successful completion of Chemistry or take Chemistry concurrently. Credit: ½ credit 2<sup>nd</sup> semester. A \$10 lab fee is required.**

**AP BIOLOGY**—The emphasis in AP Biology will vary from year to year depending on the instructor and the advances being made in research. The teacher has the freedom to choose emphases and order of presentation of topics within the major framework of the outline. For the purpose of study, the biological sciences may be divided into several broad areas: molecular and cellular biology, organism biology and populations biology, microbiology and plant biology. **PREREQUISITES: Completion of Advanced Biology and Advanced Chemistry with a grade of 78% or better. A \$15 lab fee is required.**

**AP CHEMISTRY**—An overview of freshman college general chemistry. Topics include stoichiometry, acid-base equilibrium, kinetics, thermodynamics, atomic theory, organic chemistry, behavior of gases, descriptive and solution chemistry. **PREREQUISITE: Completion of Advanced Biology and Advanced Chemistry I with a grade of 78% or better and be currently enrolled in either Pre-Calculus, Calculus, or Calculus II. A \$10 lab fee is required.**

**AP PHYSICS 1**—Equivalent to a first semester college course in algebra-based physics. This course covers Newtonian mechanics, work, energy and power; mechanical waves and sound, and introductory circuits. Students must have a strong understanding of mathematics. **PREREQUISITE: Science sequence, plus successful completion of Algebra 2 and taking Pre-Calculus concurrently. A \$10 lab fee is required.**

## SOCIAL STUDIES



**ADVANCED GOVERNMENT**—Emphasizes the major themes of government through topics that lead to an understanding of being an active citizen in the United States and today's global society.

**AP U.S. GOVERNMENT & POLITICS for 9th Grade**—Provides students with an analytical perspective on government and politics in the United States. This course includes both the study of general concepts used to interpret U.S. government and politics and the analysis of specific examples. **Students should have demonstrated a strong work ethic, maturity, and an interest in government throughout middle school. It is recommended students have a reading MAP score of 233 or higher AND be recommended by their 8th grade social studies teacher.**

**WORLD HISTORY**—Focuses primarily on the historical, geographic, economic, governmental and cultural development of major civilizations after 1500, with a focus on the impact of the past on today's world.

**ADVANCED WORLD HISTORY**—Taught at an accelerated pace and includes a more in-depth study of World History. Students should be at an advanced reading level. **Recommendation of Social Studies teacher is requested.**

**AP WORLD HISTORY**—Develops a greater understanding of the evolution of global processes and contacts in interaction with different types of human societies. Focused primarily on the past 1000 years of the global experience, the course builds on an understanding of cultural, institutional, and technological precedents that, along with geography, set the human stage. This course is taught at an accelerated pace. **A teacher recommendation is requested. A "B" or higher in a previous social studies class and a MAP reading score of 233 is recommended. NON-ACADEMY STUDENTS will be invited to participate in a voluntary skills workshop to prepare them for the upcoming school year.**

**AP WORLD HISTORY FOR ACADEMY STUDENTS**—Summer reading of 1493: Uncovering the New World Columbus Created by Charles Mann is required. Students will take a 55-question multiple choice test the first week of school.

**U.S. HISTORY**—Historical, societal and political development of the United States from Reconstruction to the present. Students will study government at various levels, explore the contributions of various cultures to the development of the American experience, examine the transformation of the US economy, and analyze how geographic features have affected US development.

**ADVANCED U.S. HISTORY**—The Advanced course is taught at an accelerated pace and includes a more in-depth study of U.S. History.

**AP U.S. HISTORY**—Offered for the student with well-developed reading and analytical skills as well as maturity in thought and purpose. The focus is on depth and quality of work preparing the student for advanced college work in this subject area. **A teacher recommendation is requested.**

## SOCIAL STUDIES ELECTIVES

**CRIMINAL JUSTICE**—Introduction to the people and procedures of the criminal justice system. Particular attention will be given to the needs and interests of today's youth. The topics of study will include the history of the criminal justice system in America, prevention and causes of crime, modern police procedures and personnel, victims' rights and the rights of the accused, correction including prison, parole and probation, a comparison between criminal and civil law procedures, and studies concerning the costs of crime. Students should be prepared to participate in discussions of mature subject matter. **This course is open to 10th, 11th, and 12th grade students only.**

**KENTUCKY STUDIES**—This course brings the various elements together which are stressed in earlier grades. Topics include arts, civil rights, communications, traditions, education, environment, labor history, religions, the sciences, and transportation.

**PSYCHOLOGY**—Designed to introduce students to the basics of psychology, which is the study of behavior and mental processes. Includes common research methods, theories that seek to explain why people do the things they do and how biology affects behavior. Topics include learning, life-span development, memory, emotion, dreaming, personality, and psychological disorders. **This course is open to 10th, 11th and 12th grade students.**

**ADVANCED POLITICAL SCIENCE**—The judicial system, laws, and the courts from the Constitutional Convention to the present is one basic area covered. The second area deals with issues and concerns of state and local government. This course is taught at an accelerated pace. **This course is open to students who have completed, or are concurrently enrolled in US History or who have a teacher recommendation. A "B" or higher in previous social studies and English classes is suggested.**

*Social Studies electives continued on next page.*



## **SOCIAL STUDIES ELECTIVES Continued...**

- ADVANCED SOCIOLOGY**—Various aspects of human interaction are covered including the roles of an individual in the family, schools, neighborhoods, rural and urban communities, and other groups with which humans identify. This course is taught at an accelerated pace. **This course is open to 11th and 12th grade students only. A “B” or higher in previous social studies and English classes is suggested.**
- AP EUROPEAN HISTORY**—Historical, geographical, economic, governmental, and cultural developments of major European civilizations. Students learn the chronology of the major events and trends from approximately 1450 through the present. **This course is open to 10th, 11th or 12th grade students. A teacher recommendation is requested. A “B” or higher in a previous social studies class and a MAP reading score of 233 is recommended.**
- AP HUMAN GEOGRAPHY**—A systematic study of patterns and processes that have shaped human understanding, use, and alteration of the Earth’s surface. Students examine human social organization and its environmental consequences. They also learn about the methods and tools geographers use in their science and practice. **This courses is open to all students. A teacher recommendation is requested. A “B” or higher in a previous social studies class and a MAP reading score of 233 is recommended.**
- AP PSYCHOLOGY**—This course is offered for the student interested in pursuing college work in psychology and as preparation for the Advanced Placement Psychology Examination. Course content includes psychological research techniques, major schools of thought, brain-behavior relationships, learning theory, sensation and perception, human development, intelligence and creativity, and memory. **This course is open to 10th, 11th or 12th grade students. A teacher recommendation is requested. A “B” or higher in a previous social studies class and a MAP reading score of 233 is recommended.**

## **ART**

- ART I**—Introduces students to the world of visual arts in a variety of ways. Students will learn to draw basic subject matter and paint in a manner of a famous artist. **A \$25 fee EACH semester is required.** In ART 2, students will further explore a variety of art media through more involved projects. **PREREQUISITE for Art 2 is Art I with a “B” or higher. A \$35 fee EACH semester is required for Art 1 and Art 2.**
- COMPUTER ASSISTED ART**—Students will become familiar with manipulating photos, creating posters and flyers announcing upcoming events for several school groups. Students will be creating fine art projects using Adobe Photoshop CS6. **PREREQUISITE for Level 1: For students in grades 10, 11, or 12 who have successfully completed Drawing I or Art I with a “C” or better. COMPUTER ASSISTED ART 2 is for students wanting to further their studies in the use of Photoshop and to learn basic uses of Illustrator. PREREQUISITE for Level 2: Level 1 with a “B” or higher. A \$25 lab fee EACH semester is required for Level 1 and 2.**
- CRAFTS**—This course focuses more on functional art than fine art. Topics include wood-burning, ceramics, embroidery, sewing, screen-printing, paper Mache, clock making, mosaics, and more. **A \$25 lab fee EACH semester is required.**
- ADVANCED DIGITAL PHOTOGRAPHY**—Students will develop technical skills that lead to success in digital camera operation, as well as a working knowledge of the language of photography. **PREREQUISITE for Level 1: Grades 10-12 who have successfully completed Computer Assisted Art, Yearbook, TV/Radio, or permission of instructor. Having own camera is encouraged but not necessary. ADVANCED DIGITAL PHOTOGRAPHY 2 involves individualized projects making up the majority of the curriculum. A personal camera is suggested but not required. PREREQUISITE for Level 2 is completion of Adv. Digital Photography 1 with a “B” or higher AND recommendation from instructor is requested. A \$35 fee EACH semester is required for Level 1 and 2.**
- DRAWING**— **Drawing 1** is designed to teach basic drawing skills. Students will explore several different drawing materials to include graphite, charcoal, pastels, and ink. Subject matter for projects ranges from still-life and portrait to abstract and non-objective. **Drawing 2** will further the work with drawing media. Individualized projects will be implemented. **PREREQUISITE for Drawing 2: Drawing 1 with a “B” or higher. Drawing 3 is a continuation of Drawing 2. Individualized projects will be implemented. PREREQUISITE for Drawing 3: Drawing 2 with a “B” or higher and teacher permission. Drawing 3 is open to 11th and 12th grade students only. A \$25 fee EACH semester is required for Drawing 1, 2, and 3.**
- PAINTING**—Students will develop techniques required in painting media and understanding the painting process. Functions of known artists’ works, schools, and styles will be explored. Watercolor and acrylic paints will be the most used painting media. **PREREQUISITE for Painting 1: Art I or Drawing I. A \$35 fee EACH semester is required. PAINTING 2 AND 3 are for students that want to further their studies in Painting. PREREQUISITE: Painting 1 for level 2 and Painting 2 for Level 3 with a “B” or higher (NO EXCEPTIONS). A \$35 fee EACH semester is required for Painting 1, 2, and 3.**
- POTTERY**—**Pottery 1** introduces students to the medium of clay and the methods of clay construction, involving development of forming and finishing skills. **Space is limited. PREREQUISITE: Art I or Drawing I. POTTERY 2 is for students wanting to further their studies in Pottery. A strong understanding of clay and pottery techniques are required. PREREQUISITE: “B” or higher in Pottery 1 AND recommendation from instructor. A \$35 fee EACH semester is required for Pottery 1 and 2.**
- ADVANCED PRINTMAKING 1/2**—The art of creating prints, students will focus on enhancing media skills. Students will create more advanced printmaking artworks. **PREREQUISITE: For students in grades 10, 11, or 12 who have successfully completed Drawing I or Art I with a “C” or better. A \$35 art fee EACH semester is required.**
- VISUAL ART: ADVERTISING DESIGN/COMMERCIAL ART** —Students will learn a real world art career path in graphic design with experience using commercial/professional software such as Photoshop and Illustrator. Students will obtain experience with show poster design/layout, advertisement design, logo design, and typography. **PREREQUISITE: For students in grades 10, 11, or 12 who have successfully completed any art class with a “C” or better. A \$25 art fee EACH semester is required.**
- VISUAL ART: SCULPTURE (THEATER STAGECRAFT DESIGN)** — In Level 1, students will learn the ‘ins and outs’ of theater production including but not limited to set design, costume design, set construction, and sound and lighting techniques. All students will help design the sets, costumes, lighting, and sound for all Henry Clay productions. Students in **Level 2** will continue their study with a more advanced approach. Students in **Level 3** will develop more leadership roles. **Level 2 requires successful completion of Level 1. Level 3 requires successful completion Level 2. A \$25 art fee EACH semester is required for Levels 1, 2, and 3. \*This course is listed as Visual Art: Sculpture in Infinite Campus.**
- AP ART HISTORY**—This is a special college-level course that is challenging and stimulating. This course requires more time than other high school art courses and gives the student great opportunity for individual progress and accomplishment. Students will examine major forms of artistic expression from the ancient world to the present and from a variety of cultures. **A \$30 fee EACH semester is required.**
- ADVANCED ART PORTFOLIO DEVELOPMENT**—For **JUNIORS** who plan to take AP Art Studio their senior year. This class will focus on the first half of the AP Art Portfolio with a variety of art media and subject matter. AP Art Studio will be a two-year program designed to help develop and perfect the student’s portfolios for submission. Students will be in class with AP Art Studio seniors to insure a fully implemented course of study. **PREREQUISITE: MUST have permission from AP Art Studio teacher to enroll. Summer work and a \$35 EACH semester fee is required.**
- ADVANCED ART INDEPENDENT STUDY**—Designed for students pursuing further independent instruction in visual arts. The curriculum is completely comprised of individualized projects to meet student needs. This class is typically for students enrolled in the AP Art Studio class. **PREREQUISITE: Completion of 2 visual art courses with “B” or higher AND recommendation from instructor. A \$35 fee EACH semester is required.**
- AP ART STUDIO**—This is the most demanding art class offered requiring students to demonstrate college-level work. Students must complete a portfolio that demonstrates exceptional performance in one of three areas: drawing, two-dimensional design, or three-dimensional design. **PREREQUISITE: Payment of \$82 is required for the Art Portfolio Review. A \$35 art fee EACH semester is also required. Students must have the recommendation of their art teacher to enroll. Summer drawings will be assigned by the teacher during the SPRING semester.**





## ARMY JROTC

Taught by retired military personnel with a goal to motivate, develop, and orient participants to be better citizens by education them in leadership position. JROTC is NOT a military recruitment program. Military tactics are NOT taught. Cadets are under no obligation to enter the military. JROTC assists in preparing students for future career and educational opportunities after high school. Students may start JROTC any semester.

### AUTOMATED ENGINEERING AND INFORMATIONAL TECHNOLOGY

**COMPUTER LITERACY**—This course provides an introduction to the computer and the convergence of technology as used in today's global environment. Students will be introduced to topics including computer hardware and software, file management, the Internet, e-mail, the social web, green computing, security and computer ethics. Instruction presents basic use of application, programming, systems, and utility software. Basic keyboarding skills are strongly recommended. Students spend at least 20 hours programming and applying learned concepts through programming.

**ENGINEERING**—Students will better understand the field of engineering and learn basic engineering principles. Students will explore the basic fields of engineering including drafting & design, mechanical, electrical, civil, and chemical engineering. Students need an understanding of basic geometry. This course will be taught through problem based learning, engaging students with design and/or reverse engineering activities and engineering design software (CAD). **PREREQUISITE: Successful completion of Geometry with a "C" or higher OR be enrolled in Geometry concurrently. A \$20 lab fee is required.**

**INTRODUCTION TO PROGRAMMING**—This course introduces students to programming by using Python, one of the most popular programming languages in use today. The course includes data types, control structures and simple data structures, modular programming, information and file processing and Object oriented programming. Students will also learn how to read code and begin thinking like a programmer. Students will have the opportunity to take an industry certification exam in the Python programming language. This course is also good preparation for AP Computer Science.

**JAVA 2**—Java Programming II provides students with an extensive overview of designing and developing advanced object-oriented applications using the Java programming language. Topics include input and output streams (file processing), polymorphism, inheritance, multithreading, recursion, mobile computing, and other advanced topics. Students spend at least 20 hours programming and applying learned concepts through programming. **PREREQUISITE: Successful completion of AP Computer Science with a "C" or higher.**

**ROBOTICS ENGINEERING**—This course provides students with the foundation in content and skills associated with robotics and automation, including artificial intelligence, electronics, physics, and principles of engineering. **A \$20 lab fee is required.**

**UNMANNED AIRCRAFT SYSTEMS**—This course provides students with the foundation skills to design, build and pilot UAS, both remotely and autonomously. Students will be prepared to complete the FAA Part 107 Remote Pilot exam upon completion of the course. **A \$20 lab fee is required.**

**AP COMPUTER SCIENCE PRINCIPLES**—Students will learn principles of structured programming and introductory systems analysis. This course is rigorous and rich in computational content and includes computational and critical thinking skills. It will engage students in the creative aspects of the field. **PREREQUISITE: Successful completion of Algebra I. A \$10 lab fee is required.**

**AP COMPUTER SCIENCE**—Emphasizes object-oriented programming methodology with an emphasis on problem solving and algorithm development and is meant to be the equivalent of a college course. This is a college level course and the prerequisite is a must. **PREREQUISITE: Successful completion or concurrently enrolled in Advanced Algebra 2. A \$10 lab fee is required.**



### BUSINESS, MARKETING, HOSPITALITY, TRAVEL, TOURISM, & RECREATION



**DIGITAL LITERACY**—Formerly Computer Applications and Technology. Students will use the Microsoft Office Suite to learn how to properly format documents and reports using Word, Excel, PowerPoint, and Publisher. **A \$5 lab fee is required.**

**ENTREPRENEURSHIP**—This course provides students the skills needed to effectively organize, develop, create and manage their own business. **A \$10 lab fee is required.**

**ETHICAL LEADERSHIP**—Students will be introduced to key leadership and ethical knowledge and skills including integrity, trust, accountability, transparency, fairness, respect, rule of law, and viability. Students will learn to apply ethical principles to real-world situations and examine the concept of ethical leadership. **A \$10 lab fee is required.**

**PRINCIPLES OF MARKETING**—This class will introduce students to the marketing mix and relationships between consumers and businesses. Topics to be covered include social media marketing, advertising & consumer behavior. **A \$10 lab fee is required.**

**PERSONAL FINANCE**—Designed to provide students with knowledge and skills to manage one's financial resources. Topics include economics, money in the economy, budgeting, credit, consumer rights, investments and retirement planning.

**INTRODUCTION TO MANAGEMENT—Seniors Only Taken with Business Education Co-op**—Emphasizes the skills needed for managing a business that involves the selection and supervision of employees including efficient use of time, personnel, facilities, and financial resources. Students will explore effective management strategies, and effective communication. **PREREQUISITE: Senior standing, employed within two weeks of the start of the first semester, AND completion of application with approval of the Business Management Coordinator. ALSO, successful completion of TWO Business/Marketing courses. A one-time \$20 fee is required for FBLA dues.**

**BUSINESS EDUCATION CO-OP—Seniors Only taken with Intro. to Management**—This is an internship for Career and Technical Education courses involves work-site experiences for high school students associated with their identified career pathway. **PREREQUISITE: By application only with teacher approval. A one-time \$20 fee is required for FBLA dues.**

**FOODS & NUTRITION**—This is an introductory course for those pursuing the Hospitality, Travel, and Recreation pathway. This course addresses attitudes toward food, nutritional facts, special health concerns and diets, management of food sources, basic preparation skills, food safety, sanitation, and careers in nutrition and food service. **Open to 9th, 10th, and 11th grade students only. A \$20 fee is required.**

**ADVANCED FOODS AND NUTRITION**—This course is designed to assist students in principles related to food preparation for those pursuing the Hospitality, Travel, and Tourism Pathway. Content will include food presentation, serving, special diets and nutrition for the lifespan, planning for entertainment services, and careers in nutrition and food service. **PREREQUISITE: Successful completion of Foods & Nutrition with a "C" or higher. Open to 10th – 12th grade students only. A \$40 fee is required.**

**PRINCIPLES OF HOSPITALITY**—This is an introductory course for those pursuing the Hospitality, Travel, and Recreation pathway. Students will be introduced to an industry that encompasses lodging, travel and tourism, recreation, amusements, attractions, and food/beverage operation. Students learn knowledge and skills focusing on communication, time management, and customer service that meet industry standards. **A \$20 Fee is required.**





## HEALTH AND PHYSICAL EDUCATION

**FITNESS FOR LIFE—9th Grade Students Only—**This course does not count towards the state required physical education course. Students will obtain the knowledge and skills necessary to develop and maintain a health-enhancing level of fitness and to increase physical competence, self esteem and the motivation to pursue lifetime activities. Topics include wellness, physical fitness for health, fitness assessments, diet and nutrition, fitness terminology, training principles, and prevention and care of injuries related to physical activity. **Students are required to dress appropriately. A \$10 course fee is required.**

**CONTROLLING STRESS/YOGA—**Yoga practices are used to assist students to become more physically, mentally, energetically, and emotionally fit. Students will learn concepts of physical fitness and identify stress reduction techniques. They will gain an increase ability to concentrate and eventually develop a Personal Fitness Plan to support a lifetime of fitness and mindfulness. **Appropriate dress is required. A \$10 course fee is required.**

**HEALTH EDUCATION—**Topics include abstinence; personal & sexual health; emotional & mental health; HIV, STD & pregnancy prevention; nutrition & physical activity; tobacco, alcohol & other drug prevention; violence & injury prevention.. **Credit: ¼ per semester – ½ required for graduation.**

**PHYSICAL EDUCATION—**Involves the teaching of lifetime leisure sports, individual sports and team sports. **Students are required to dress appropriately for a PE class. Credit: ¼ per semester – ½ required for graduation. A \$10 course fee is required.**

**PHYSICAL EDUCATION II OR III: PE II—**This course provides opportunities to further develop skills and knowledge related to fitness, physical competence, cognitive understanding and positive attitudes that promote a healthy and physical active lifestyles. **Students are required to dress appropriately for a PE class. PREREQUISITE: Successful completion of Physical Education I and teacher recommendation is requested. PE III—teacher recommendation requested. A \$10 course fee is required.**

## MUSIC

**BEGINNING CHORUS—**Designed primarily for beginning and intermediate choral instruction. It will provide an understanding of the fundamentals of proper vocal techniques, choral techniques, and music theory. No audition required. **There are some out-of-school rehearsals and performances required. A \$20 course fee is required.**

**ADVANCED SINGERS—**This course is designed to expose students to advanced level choral literature through a range of time periods and styles. Emphasis is placed on individual performance technique and ensemble performance. Students will also learn music theory (written and aural). Opportunities for solo singing and small ensemble singing are offered in this group. **PREREQUISITE: Audition or director recommendation required. Open to 10th, 11th, and 12th grades only. There are some out-of-school rehearsals and performances required. A \$20 course fee is required.**



**GUITAR—Guitar 1** is for students with limited or NO previous guitar experience. Students will learn how to read music and learn the many different skills and techniques required to become a successful guitarist. **There will be some out-of-school rehearsals and performances required. A \$15 fee is required. Guitars are also available for rent for an additional \$15.**

**ADVANCED GUITAR 2** is for students that have completed **Guitar 1** or who have a basic understanding of music theory and an ability to read musical notation for guitar. Emphasis is also placed on the music industry and approaching music through a business perspective. **A \$15 fee is required. Guitars are also available for rent for an additional \$15. PREREQUISITE: Successful completion of Guitar 1 and/or audition with instructor.**

**SYMPHONIC BAND—**For woodwind and brass musicians. Provides students with opportunities to study, appreciate, and effectively perform all styles and periods of wind band literature. **Out of school rehearsals and performances are required. PREREQUISITE: Students must have 2 years of prior playing and are admitted through AUDITION ONLY.**

**ADVANCED BAND AND THEORY—**Designed for advanced woodwind and brass musicians. The students will study and perform the most challenging wind band literature of all eras and styles. **Out of school rehearsals and performances are required. PREREQUISITE: Students must have 2 years of prior playing experience and are admitted through AUDITION ONLY.**

**PERCUSSION—**Designed for percussionists only and exposes students to the fundamentals of percussion performance. **Out of school performances are required. PREREQUISITE: Students must have prior playing experience and are admitted through AUDITION ONLY.**

**ADVANCED PERCUSSION—**Designed for advanced percussionists only. All students are required to perform with either the Concert Band or Advanced Band in rehearsals and concerts. **Out of school rehearsals and performances are required. PREREQUISITE: Students must have 2 years of prior playing experience and are admitted through AUDITION ONLY.**

**ADVANCED JAZZ BAND—**Provides students with opportunities to study, appreciate, and effectively perform all styles and genres of jazz literature. **Out of school performances are required. PREREQUISITES: Students must be enrolled in a Henry Clay High School music performance course (band, orchestra, or chorus). Students must have prior playing experience and are admitted through AUDITION ONLY.**

**ADVANCED MARCHING BAND—**Designed to provide students with an experience in marching band. Students will learn the fundamentals and technique of marching and performing a field show. This course meets outside the instructional day beginning in mid July continuing through early November. **Regular after school rehearsals and Friday/Saturday performances are required. All students are required to attend and complete summer band camp as a part of the course. PREREQUISITES: Students must be enrolled in a music performance course (band, orchestra, or chorus) except for color guard members. Student must have prior playing experience and are admitted through AUDITION ONLY.**



**REPERTORY ORCHESTRA—**Students must have at least three years playing experience and are admitted by recommendation of their middle school orchestra directors. Daily rehearsals are combined with periodic sectional work and individual practice to perform medium grade string orchestra music in four annual concerts and KMEA Festival. **Concerts and a limited number of after school rehearsals occur outside the regular school day and are required.** Students are encouraged to perform at KMEA Solo & Ensemble, volunteer for community outreach opportunities, and participate in fundraising and after-school social events such as the Henry Clay Orchestra Boosters. **A \$25 course fee is required as well as a \$25 fee for each rented school instrument.**

**ADVANCED SYMPHONIC ORCHESTRA—**Students are admitted by audition. Daily rehearsals are combined with periodic sectional work and a strong commitment to individual practice to perform advanced level string orchestra and small ensemble repertoire. **Concerts and a limited number of after school rehearsals occur outside the regular school day and are required. This orchestra performs a dozen times over the year including four annual concerts, KMEA Festival, Solo & Ensemble and All-State, and Henry Clay school functions such as National Honor Society induction and graduation at Rupp Arena.** Students are encouraged to participate in community outreach, fundraising, and social activities. **A \$25 course fee is required as well as a \$25 fee for each rented school instrument.**





## WORLD LANGUAGES: FRENCH GERMAN SPANISH

**WORLD LANGUAGES:** Students who successfully complete the second level of a world language are considered to have completed the pre-college curriculum. **Students wishing to take Level 2 or above for the first time in high school are encouraged to take the STAMP (Standards-based Assessment and Measurement of Proficiency) which will recommend a student's placement.** The cost is \$25 and checks should be made payable to *Henry Clay High School*. Testing dates will be announced.

**LEVEL 1**—This class is for students with little or no previous background in the language. Students will learn basic listening, speaking, reading and writing skills. **It is recommended to have a “C” or higher in English to enroll in the class.**

**LEVEL 2**—Emphasis will be placed on grammatical structures and vocabulary development while improving listening, speaking, reading and writing skills. **RECOMMENDATION: Successful completion of Level 1 of a “C” or higher and teacher recommendation.**

**ADVANCED LEVEL 3**—The main goal of this fast-paced level is for students to learn to express their ideas accurately and resourcefully both orally and in writing with reasonable fluency. **RECOMMENDATION: Successful completion of Level 2 with a “C” or higher and teacher recommendation.**

**ADVANCED LEVEL 4**—Students are expected to understand the spoken language as heard on the radio and in films. **RECOMMENDATION: Successful completion of Level 3 with a “C” or higher and teacher recommendation.**

**AP LEVEL**—Equivalent of an intermediate college course in the advanced language of composition and conversation. **There is a \$20 class fee required. RECOMMENDATION: Successful completion of Level 4 German or Spanish or Advanced French 3 with teacher consultation.**

**SPANISH FOR NATIVE SPEAKERS**—This course will teach native speaking Hispanic students to correct Spanish grammar and spelling, to write a well-organized composition, and to read and analyze Hispanic literature.

**SPANISH FOR CAREERS**—This course will look at Spanish to navigate various professions: education, emergency responders, social workers, hospitality, law enforcement, healthcare, and entrepreneurship. This course will be taught through a cultural lens that covers level 3 standards. Students may take this course as an alternative to level 3 and will be able to proceed to more advanced courses. **PREREQUISITE: Successful completion of Spanish 2 with a “C” or higher.**

**ADVANCED HISPANIC LITERATURE AND FILM**—This course will enable students to pursue an understanding of film within the context of a wider knowledge of Hispanic culture. Hispanic Literature and Film covers both the Iberian Peninsula and Latin America and integrates the study of Hispanic literature and film. Students will explore literary and film techniques, and in depth analysis and interpretations. There will be discussions and analytical writings. **PREREQUISITE: Native Spanish Speakers should have successful completion of Spanish 2 with a “C” or higher. Non-Spanish speakers should have successful completion of Adv. Spanish 3 or Spanish for Careers with a “C” or higher.**



### ADVANCED EXPERIENCED BASED CAREER EDUCATION (EBCE)

Academic Internships through EBCE are designed to utilize the entire community as a classroom. Seniors are provided opportunities to observe, study and apply academic skills in a variety of businesses and industries, as well as public and private agencies in this year-long shadowing, internship, mentoring program. By spending two or more hours a day in the Academic Internship Program, a student can earn academic credit while shadowing a series of professionals to learn about career opportunities and planning for the future. **PREREQUISITE: Students must be in the 12th grade. AND complete all application requirements before the deadline. Students should submit their application on the scheduling website.**



### ESL – English as a Second Language

ESL is provided for all non-English speaking students, grades nine through twelve. The program is a sequential course of study which teaches English vocabulary and structures using second language teaching techniques. Instruction includes the development of skills in listening, speaking, reading and writing English. Henry Clay aims to promote the full participation and inclusion of limited English proficient (LEP) students in the general education curriculum, ensure their academic success on par with native speakers and enable LEP students to make successful transitions to post-secondary opportunities.

### E-SCHOOL AT MLK

**e-SCHOOL:** In partnership with Jefferson County Public Schools, students may take courses through the e-School online learning system. MLK on Liberty Road supports the eSchool program and all tests are administered at MLK. Students must have a minimum reading level of 230 on the MAP or 18 on the ACT Reading to be admitted. The cost is \$125 per 1/2 credit (\$80 for reduced lunch students and \$60 for free lunch students). All fees are the responsibility of the student. See your counselor for an application and additional information.



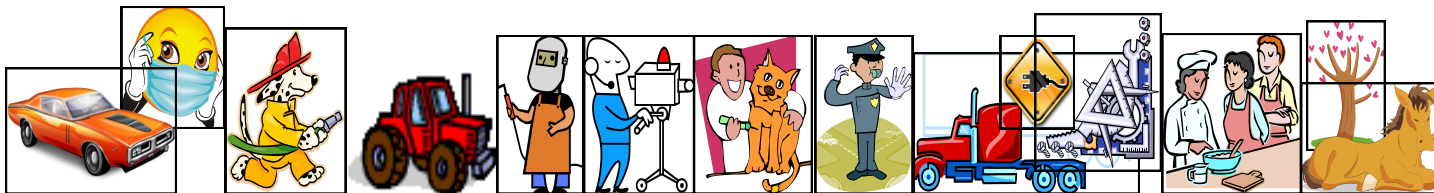
### SUMMER SCHOOL AT HENRY CLAY HIGH SCHOOL

**The Summer Physical Education class dates have not been determined. Dates will be announced in late March or mid April AFTER inclement weather make-up days have been determined.**

Students pick 1 of the summer sessions—either June or July to attend PE from 8:30 until 3:30 with a 30 minute lunch break. Students are responsible for their own lunch. The cost has not been determined. The cost in the past was \$160 for the ½ Credit of PE. Reduced lunch students paid \$100 and free lunch paid \$75. **Because the class is only a 10 day class, attendance is required EVERY day.**

Students taking PE during summer school will take Health through e-School. e-School is a separate registration process and a separate payment. e-School is \$125 for Health. (Reduced lunch students pay \$80 and free lunch students pay \$60.) This course is completed by the student independently on the internet. Students will need to get the e-School application from their counselor in May.

**If you are interested in Summer Health and PE, complete the Google Form on the Henry Clay Scheduling website. Registration Dates will be announced after Spring Break. Watch the Infinite Campus announcements and your email.**



## FAYETTE COUNTY TECHNICAL CENTERS

The Fayette County Technical Centers offer career and technical occupational training to high school students. All courses offered at Fayette County Technical Centers follow the **Kentucky Department of Education (KDE) Kentucky Tech Education** curriculum and upon completion of an approved pathway of study will qualify the student as Career Ready. Students interested in receiving training in one of the technical programs should have a satisfactory scholastic standing, possess an average mechanical ability, and be able to follow written and verbal instructions. Students may also attend a technical center class for a second school year for more advanced training and possible certification. Students who have achieved a level of acceptable work in a course may be allowed to participate in a work-based learning program, which allows students an opportunity to spend part of the school day working at a job in the community in a particular field of training.

**PREREQUISITE:** Acceptable standards of conduct, good attendance, classroom work, and practical work are required. Applications are required and can be found on the technical center's website or the Henry Clay website.

**Contact Information:** Eastside—(859) 381-3740      Locust Trace—(859) 381-3990      Southside—(859) 381-3603

**Complete Description of Programs can be found at:**

[www.eastside.fcps.net](http://www.eastside.fcps.net)

[www.locusttrace.fcps.net](http://www.locusttrace.fcps.net)

[www.southside.fcps.net](http://www.southside.fcps.net)

**APPLICATIONS ARE AVAILABLE ON THE HENRY CLAY COUNSELING SCHEDULING WEBSITE.**

### EASTSIDE CAMPUS PROGRAMS

**AVIATION**—This pathway prepares individuals to apply technical knowledge into the first phase of aviation training leading to a commercial pilot license as well as the skills needed to repair, service and maintain all aircraft and their components. Some of the areas studied include navigation of commercial and passenger aircraft, flight systems and controls, flight crew operations and procedures, and safety and traffic regulations. Students will also study how to repair/service and maintain aircraft engines, propellers, avionic instruments, layout and fabrication of sheet metal, fabric, parts, cables and hydraulic units. To satisfy FAA requirements, students must log hours and work with approved FAA rated Airframe and Powerplant Technicians or Inspection Authorized persons.

**AUTOMOTIVE TECHNOLOGY**—Various systems of automotive technology to develop skills in troubleshooting are introduced. Students will learn to perform preventive maintenance as well as service and repair automobiles. Areas of study are to ASE and industry specifications and include engines, electrical & electronic, brake systems, and steering & suspension.

**BROADCASTING/VIDEO PRODUCTION**—Students learn about reporting and anchoring for TV, videography, editing, behind the scenes news production, podcasting, blogging, composing original music for newscasts, and storytelling through digital photography. Eastside students have access to the most up-to-date equipment. They will learn to use the same editing software used in academy award winning blockbusters.

**DIESEL ENGINEERING**—Students in diesel technology learn to repair and maintain heavy trucks, heavy equipment and diesel engines. Students develop skills in troubleshooting, preventative maintenance, repair and servicing of all vehicles and equipment that utilizes diesel power. Instruction is focused on preparing students for post secondary or career placement within this high-tech, high-demand career field.

**DIGITAL DESIGN & GAME DEV**—Provides a broad and in-depth approach to computer programming through game design. Using comprehensive theory and hands-on experiences, students will gain the skills and knowledge required for the entire development process of gaming from concept to completion. Gaming programs as Alice, KODU, Scratch, RPG VX Maker, RPG IG Maker, and Gamemaker are used. Opportunities may become available in programming languages (Ruby, Java, HTML, PHP, etc.), as well as, development of mobile applications for selected students. **Prior knowledge of Microsoft Office and completion of Algebra is highly recommended.**

**FIRE AND EMERGENCY SERVICES**—Includes intense physical training, introduction to firefighting equipment & use, fire behavior & combustion, fire investigation, fire protection system, and fire prevention.

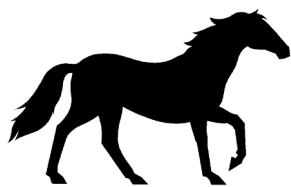
**HEAVY EQUIPMENT AND TRUCKING OPERATION**—This program focuses equally on the heavy equipment trade (dump trucks, backhoes, excavators, skid steers, dozers, etc.) and professional tractor-trailer driving. The curriculum will be built around hands on exercises, state of the art simulators and field experiences such as job shadowing, internships and co-ops. Upon completion of the program, students can earn dual credit towards post-secondary education and be prepared to apply for their Commercial Learner's Permit (CLP) written exam.

**LAW ENFORCEMENT**—This is a broad based program for students with an interest in criminal justice, law enforcement, public safety and other related legal careers. The program includes the study of civil and criminal law providing a strong foundation for entry into advanced training within the military, at a police academy or college. Intense physical training based on current peace officer standards for Kentucky, as well as studies in criminal investigations, crime scene investigations, officer safety, patrol techniques, communications, and criminal law are included.





## LOCUST TRACE CAMPUS AGRICULTURE PROGRAMS



In addition to classroom and lab space, Locust Trace AgriScience Center has an 82-acre working farm, a veterinary clinic (open for public use), an equine barn with show arena, a livestock barn, greenhouse, aquaponics system, and community gardens. Agricultural career opportunities are emphasized in all courses. Leadership development is provided through student organizations FFA/Jr. MANRRS and career development occurs throughout enrollment from Supervised Agricultural Experience. CTE dual credit course offerings are available in each pathway. All courses at Locust Trace will be PROJECT BASED. Students will guide their own learning through the facilitation of Locust Trace's team of instructors. Students pursuing this program must be prepared to work both independently and as a member of a team. Students will learn how to monitor their own progress set their own goals and are entirely in charge of their own learning based upon their interests and career plans. Opportunities for internships and work-based learning experiences are also offered at LTAC. Students are expected to complete at least one pathway and participate in the corresponding EOP assessment, industry certification, or dual credit courses in an effort to achieve post-secondary readiness.

**A complete list of Pathways and Current Course Offerings can be found at <https://www.fcps.net/Page/17389>**

**New Applications Accepted from 8th and 9th grades only during spring registration.  
To Ensure Pathway completion, students must apply by the end of their Freshman Year.**

**AGRICULTURAL ENGINEERING**—Students learn a variety of skills utilized in the agriculture industry, including small engine mechanics, farm maintenance, equipment operation, repair, restoration, carpentry, construction, and welding.

**EQUINE STUDIES PROGRAM**—Students learn about the equine industry and related businesses. Students develop knowledge and skills related to the handling, grooming, and barn care of horses in addition to farm management.

**ENVIRONMENTAL SCIENCE AND NATURAL RESOURCES**—Students learn to manage and conserve natural resources, including forest, woodlands, wetlands, and wildlife. Students learn how environmental science and a variety of ecosystems relate to agriculture.

**FOOD SCIENCE AND PROCESSING SYSTEMS**—Students learn about the growth and production of plants and animals as a food source. Topics include nutritional needs, food preparation, consumption trends, production processing, and transporting of animal products.

**PLANT SCIENCES**—Students learn about the growth of all types of plants, both edible and decorative. Edible plant topics include nutritional needs, food preparation, consumption trends, production processing, and transporting plants. Decorative plant topics include floral design, landscaping, and sports turf management.

**PRE-VETERINARY STUDIES**—Students work with small animals in a clinical setting. Students learn how to board, groom, and train small animals and pursue careers related to veterinary science.



## SOUTHSIDE CAMPUS PROGRAMS



**CARPENTRY**—Students learn to use tools, machines, materials, and processes for commercial carpentry with hands-on experience. Students will develop skills in cost estimation, carpentry, construction, and trade-based math. Grades 9 - 12.

**CULINARY ARTS**—**Recommended 2.5 G.P.A. and a previous foods class.** Students learn cooking methods and techniques for both beginner and advanced students in a full size commercial kitchen setting. Students will develop skills in preparation, restaurant management, and industry standard culinary techniques. **Enrollment in this program requires three full class periods which means an academic course will not be available for Culinary Art students at Southside. Grades 9 - 12.**

**ELECTRICAL**—Students learn to work in high-voltage electrical settings. Students will develop skills in residential wiring, industrial electricity, and programmable logic controllers (PLCs), as well as install wiring and conduit, service motors, and more. Grades 9 - 12.

**ELECTRONICS**—Students learn to work in low-voltage electronic settings. Students will develop skills in electronics circuits, communication electronics and troubleshooting while also learning how to install and operate TV, radio, sonar, home, auto, and security systems. **Grades 9 - 12.**

**EMERGENCY MEDICAL TECHNICIAN**—Students will be trained to complete the EMT Basic National Certification. Students use their practical and theoretical skills to provide care in emergencies. Students also complete clinical ride time to get experience in the field. **Enrollment in this program requires three full class periods which means that an academic course offering will not be available at Southside for Medical Science students. Grade 12 Only AND Must be 18 by Clinical Hours.**

**INDUSTRIAL TECHNOLOGY**—Students learn to work with 3D computer design and modern production systems. Students develop skills in the creation and operation of cyber mechanical systems and unmanned vehicles, as well as fabrication of student-created designs using top industry equipment. Students will engage in 3-D computer-aided design, documentation, prototyping, testing and analysis. Students will also design modern production systems, create energy efficient work cells and explore robotics with the programmable logic control systems used in the world's leading industries. **Grades 9 - 12.**

**MEDICAL SCIENCES**—**(Recommended 2.5 G.P.A. and a "C" or better.** Students will be prepared for all medical field careers with (tentative) clinical rotation at local healthcare facilities. Students will learn medical concepts that are relevant to all health care careers, such as infection control, communication, legal and bioethical issues, and anatomy & physiology. **Enrollment in this program requires three full class periods which means that an academic course offering will not be available at Southside for Medical Science students. Grades 10 - 12.**

**PHARMACY TECHNICIAN**—students attain a PTCB pharmacy technician certification after completing the requirements of the Allied Health or Pre-Nursing pathways. Students use a self-paced online curriculum and complete an internship to be eligible for the certification examination. **Grades 10 - 12.**

**PRE-NURSING (Recommended 2.5 G.P.A. and a "C" or better is previous medical related courses):** Pre-Nursing serves as a gateway to becoming an RN. Students will experience classroom, lab, and clinical training to prepare for licensure as a State Registered Nurse Aid. Students are prepared to take the state certification exam, become a SRNA, and obtain employment at the entry level of the nursing profession. **Enrollment in this program requires three full class periods which means that an academic course offering will not be available at Southside for this program. Grade 12 Only.**

**WELDING TECHNOLOGY:** Students learn beginner and advanced techniques for welding and provides the opportunity for students to earn multiple industry certifications in one of the area's most marketable skills. Students are able to master welding strategies including Shielded Metal Arc Welding (SMAW), Gas Tungsten Arc Welding (GTAW), Metal Inert Gas (MIG) and Tungsten Inert Gas (TIG) processes. These courses will also help students develop skills and knowledge in oxygen-acetylene cutting, welding and brazing, and metal fabrication. **Grades 10 - 12.**

# HENRY CLAY STUDENT EXPECTATIONS

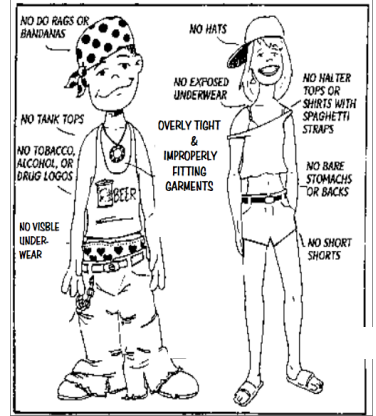
## Dress Code

The following cannot be shown at school:

- ⊗ Bare midriffs
- ⊗ Bare shoulders (i.e., tank tops, spaghetti-strap tops, or muscle shirts)
- ⊗ Bare backs (i.e., sundresses)
- ⊗ Underwear above the belt-line of pants

The following apparel cannot be worn at school:

- ⊗ Gang or cult-related attire
- ⊗ Grooming combs, pencils, hair nets, or curlers in the hair
- ⊗ Items with unusual, vulgar, drug/alcohol/tobacco-related design or designs that advocate illegal or racist activity, or are otherwise distracting
- ⊗ See-through clothing or low-cut tops
- ⊗ Sunglasses, gloves, hats, caps, hoods, scarves, or bandanas, except when worn for religious purposes. These items should be in a locker or book bag by the first bell.
- ⊗ Shorts or skirts that are too short. Items that are too short are defined as those that do not reach the student's fingertips when his/her arms are at rest by his/her sides.
- ⊗ Any apparel that administration determines to be offensive or too revealing.



**Students will be given the opportunity to comply. If they refuse, administrative action will follow.**

## Hall Passes

No hall passes are issued during the first or last ten minutes of class. Students found in the hall without a valid pass will be taken to SAFE.

**Student ID Cards**—All students are required to wear a lanyard with a student ID card attached. Lost ID cards will cost \$1.00 to replace. The \$1.00 can be refunded if the student locates the lost card and presents it to administration. Students will be placed in SAFE if they do not have an ID card.

## Off-Limit Areas

Students are not permitted outside during lunch unless they are in the enclosed courtyard. Students are not allowed in the following areas during the school day without written permission from an administrator, his/her designee, or

- |                  |   |                   |
|------------------|---|-------------------|
| Law Enforcement: | *Parking lots, including the faculty parking lot      | *Woods            |
|                  | *Area under the cafeteria in the back of the building | *Baseball field   |
|                  | *Entrance to the band room                            | *Football stadium |



## Tardiness

A student is considered tardy if he or she arrives after the designated start time or leaves before the end of the instructional day. Students must be checked in or out of school by a parent, guardian, or authorized adult. Late arrivals or early dismissals will be counted as an absence or tardy according to the arrival/departure time. All excused absence notes, check-ins, and check-outs will be handled by the attendance clerk's office.



## **BE ON TIME !!!**

School begins at 8:25 a.m. A student is considered tardy if he or she arrives after the designated school start time or leaves before the end of the instructional day. Students must be checked in or out of school by a parent, guardian or authorized adult. Late arrivals or early dismissals will be counted as an absence or tardy according to the arrival/departure time. **Tuancy:** Any student who has been absent from school without a valid excuse for three days or more, or tardy without valid excuse on three days or more, is considered truant. A student who has been reported truant two or more times is considered a habitual truant and parents may face legal ramifications. See the Student Code of Conduct for valid excuses to miss school. **Want a permit or drivers license? Attendance is linked to the No Pass/No Drive law in Kentucky.**

## Absences and Make-up Work

Students **MUST** submit their absence notes to the attendance clerk within three (3) days of the absence for it to be excused. Students with an excused absence are eligible to receive and earn credit for their make-up work. Students are responsible for obtaining make-up work from each of their teachers upon their return and will receive the same number of days as the student was absent, plus one day to turn in make-up work.

Students are permitted to use 10 parent notes per school year for full day absences, 10 parent notes per year for tardiness to school, 3 family emergency days and additional days for funerals, and unlimited doctor notes for appointments and procedures. See the Student Code of Conduct for complete attendance explanations.

The attendance clerk can be contacted at (859) 381-3429. Notes should have the full name of the student, the date of the absence, the reason for the absence, and the parent signature and telephone number. Submit notes in person at the attendance office, or fax to (859) 381-3430, or email to [scarlett.bailey@fayette.kyschools.us](mailto:scarlett.bailey@fayette.kyschools.us) within three (3) days of the absence.

***These expectations are designed to create a safe, orderly, and comfortable environment for all students. Thank you for your cooperation. Have a great year!***



# ATHLETIC ELIGIBILITY

## Certification Requirements:

- For NCAA, student athletes can find eligibility requirements and can register with the NCAA Initial Eligibility Clearinghouse at [www.eligibilitycenter.org](http://www.eligibilitycenter.org).
- For NAIA, students should go to [www.paynaia.org](http://www.paynaia.org) or registration and information.

**DIVISION I  
Qualifier Requirements**  
\*Athletics aid, practice, and competition

- 16 core courses
  - Ten (10) core courses completed before the start of seventh semester (senior year). 4 English, 3 Math, 2 Science, 1 additional n English, Math or Science, 2 Social Studies, and 4 additional approved core courses.
- Corresponding test score (See chart at [www.eligibilitycenter.org](http://www.eligibilitycenter.org) AND 2.3 minimum GPA in core courses.
- Graduate from high school.

**DIVISION II**

- 16 core courses - 3 English, 3 Math, 2 Science, 2 Social Studies, and 3 additional courses in English, math, and/or science, and 4 additional approved core courses.
- Minimum GPA 2.2 in 16 core courses.
- Earn an ACT sum score of 68 or an SAT combined score of 820.
- Graduate from high school.

When registering for the ACT or SAT, use code **9999** in the section on the college and scholarship codes.

**NAIA**  
**Student-Athletes MUST meet 2 out of the following 3 requirements and graduate from high school.**

1. Score a minimum ACT composite score of an 18 OR SAT score of a 970 (evidence-based reading/writing and math).
2. Earn at least a 2.0 GPA on a 4.0 scale in high school. There is not a core course list – this is a student's overall GPA on a 4.0 scale.
3. Rank in the top 50% of their high school graduating class.

**Remember, the student-athlete only has to meet TWO of the THREE requirements above.**



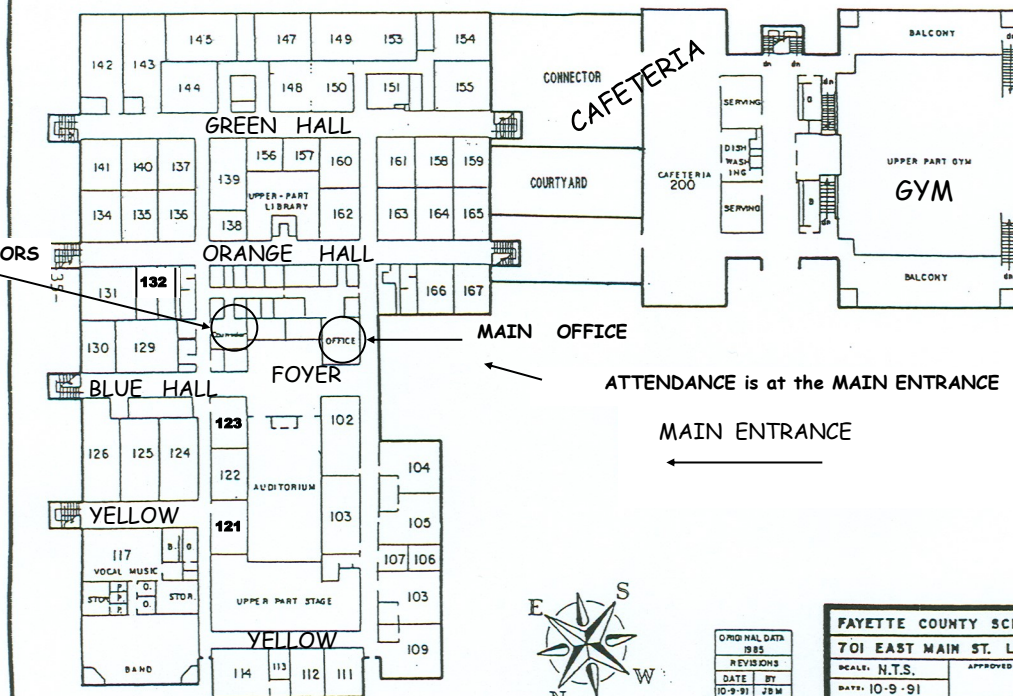
## Henry Clay Athletics A Tradition of Excellence

A QUICK REFERENCE TO ATHLETIC ELIGIBILITY AT HENRY CLAY HIGH SCHOOL		
KHSAA REQUIRES	FAYETTE COUNTY REQUIRES	HENRY CLAY REQUIRES
Student must be on schedule to graduate by the FIRST day of school in August.  Visit KHSAA at <a href="http://www.khsaa.org">www.khsaa.org</a> for the handbook.	Student must be online to graduate defined as freshman (promoted from the 8th grade), sophomore (earned 5 credits), junior (earned 10 credits), or senior (earned 16 credits) by the start of the first day of school in August.	Same as FCPS
At the time of tryout, an athlete must have passed 4 classes the preceding semester and be online to graduate. Also, said athlete must also be eligible on the first day of school in August. Example: a spring sport athlete must be eligible after both the preceding Spring and Fall semesters.	At time of tryout, an athlete must have passed 4 classes the preceding semester and carried a 2.0 GPA for that semester. This GPA can be calculated by dropping the lowest grade as long as the athlete has a full academic schedule of 6 classes (Health/PE must be averaged together as one course). The 2.0 is not a KHSAA requirement—only FCPS and HC.	Same as FCPS except the GPA can be averaged using weighted grades.
Weekly grade checks must be complete each week and student must be passing 4 out of 6 hours of instruction.	Same as KHSAA. The 4 out of 6 hour instruction rule is calculated by 4/6 or passing 66% of the coursework that week.	Same as KHSAA with grade checks on Thursday for the following Monday—Sunday.
Athletes must attend school the day of competition, practice or tryouts to be eligible to participate.	Students must attend half a day to compete, practice or tryout.	Student must attend 3 academic hours to compete, practice, or tryout..
Athletes have 4 consecutive calendar years of eligibility	Same as KHSAA	Same as KHSAA
Student athletes reaching the age of 19 before August 1 are not eligible for athletic participation.	Same as KHSAA	Same as KHSAA
Transfer - Varsity eligibility MUST be established with the Athletic Director. See Handbook and discuss with the Athletic Director.	Same as KHSAA...with some exceptions - most notably 36 week waiting period for all levels.	Same as KHSAA
Out-of-District - Student must live in school attendance area.	Student must attend in district school or meet specific criteria spelled out in FCPS Athletic Guidelines. See the Athletic Director for explanations.	Same as FCPS...reminder that any student not living in district must sit 36 weeks from the day of enrollment in order to be eligible at any level of participation.
Athletes who are ineligible for ANY reason are not eligible for competition, practice or even tryouts.	Same as KHSAA	Same as KHSAA



## UPSTAIRS

## COUNSELORS



MAIN OFFICE

ATTENDANCE is at the MAIN ENTRANCE

MAIN ENTRANCE



LAKESHORE DRIVE

ORIGINAL DATA	
1985	
REVISIONS	
DATE	BY
10-9-91	JBM
12-10-91	JBM

FAYETTE COUNTY SCHOOLS MAINTENANCE DEPT.

701 EAST MAIN ST. LEXINGTON, KY. 40502

SCALE: N.T.S.  
DATE: 10-9-91

APPROVED BY:

DRAWN BY  
Joseph McNeely

HENRY CLAY HIGH

FLOOR PLAN

46

## DOWNSTAIRS

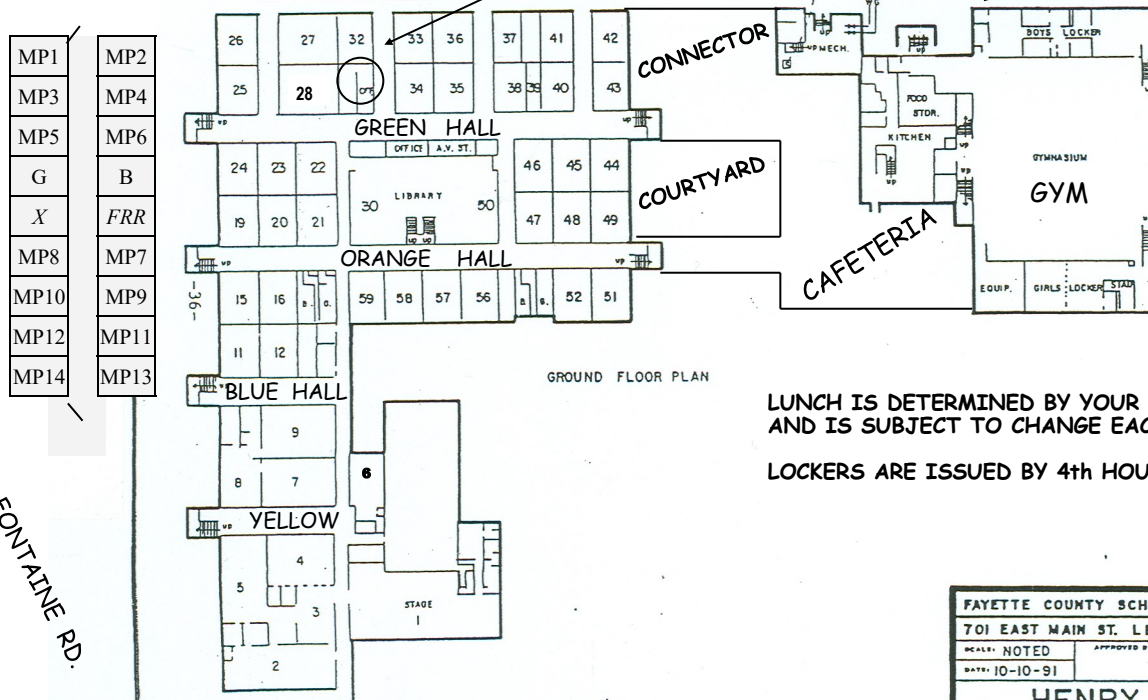
Multiplex  
Portable

## BUS LOADING

OFFICE

Mobiles A and B

Sheet 2 of 2



### GROUND FLOOR PLAN

**LUNCH IS DETERMINED BY YOUR 4TH HOUR CLASS AND IS SUBJECT TO CHANGE EACH YEAR.**

**LOCKERS ARE ISSUED BY 4th HOUR TEACHER**

FAYETTE COUNTY SCHOOLS MAINTENANCE DEPT.

701 EAST MAIN ST. LEXINGTON, KY. 40502

SCALE: NOTED

APPROVED BY

DRAWN BY
Joseph McNeely

HENRY CLAY HIGH

### FLOOR PLAN

DRAWING NUMBER  
46



# We are Henry Clay

## HENRY CLAY HIGH SCHOOL SPORTS and COACHES

Coaches are listed according to 2022-2023 school year.  
This is subject to change for the 2023-2024 school year.

**Athletic Director—Kristian Junker**

859-381-3423 Ext. 53056

[www.henryclayathletics.com](http://www.henryclayathletics.com)

Kentucky High School Athletic Association - [www.khsaa.org](http://www.khsaa.org)

Archery—Jennifer Varble  
Baseball—Jordan Tarrence  
Basketball Boys—Daniel Brown  
Basketball Girls—Ashley Garrard  
Bass Fishing—Daniel Brown  
Bowling—Kevin Smith  
Cheerleading—Olivia Cornett  
Cross Country —Tommy Craft  
Dance—Nikki Henlein  
Diving—Emily Krebs  
Football—Demetrius Gay  
Golf Boys—Stephen Keinath

Golf Girls—Ryan Queenan  
Lacrosse—Ben Ternosky  
Lacrosse Girls—Brianna McCulley  
Soccer Boys—Jason Behler  
Soccer Girls—Haydon Warren  
Softball—Tim McCoy  
Swimming—Lindsey and EJ Quijano  
Tennis Boys—John Herring  
Tennis Girls—Christy Herring  
Track—Demetrius Gay  
Volleyball—Dale Grupe  
Wrestling—Andy Critchfield



## Henry Clay Fight Song

Get going Blue Devils,  
Hold that ball and crash that line  
O, Blue Devils,  
you've just got to win this time.  
And you can do it, so go to it  
and Fight, Fight, Fight!

Get out and play Devils,  
Like you've never played before,  
and pray, devils,  
that you score and score some more  
And you can do it if you only try  
for dear ol' Henry Clay High!  
D-E-V-I-L-S  
Devils!





# FAYETTE COUNTY PUBLIC SCHOOLS 2023-2024 SCHOOL CALENDAR



Refer to [www.fcps.net](http://www.fcps.net) for the district's online listings which also include report card dates, Board of Education meetings, and more.



The Fayette County Board of Education approved this calendar July 25, 2022.  
It is subject to change.

2023 August	16	First day of school for students.
	25	No classes for students
September	4	Labor Day - Schools and offices closed.
October	2 - 6	Fall Break - No classes for students.
November	7	Election Day - Schools and offices closed.
	22	Schools and offices closed.
	23	Thanksgiving Day - School and offices closed.
	24	Schools and offices closed.
December	20 - 31	Winter Break.
January 2024	1 - 3	Winter Break
	4	Students return to School.
	15	Martin Luther King, Jr. Day - Schools and offices closed.
February	19	Presidents Day - Schools and offices closed.
March	15	No school for students - Possible weather make-up day.
April 1 - 5, 2024		Spring Break - Schools and Offices Closed.
May	14	Primary Elections; no class for students.
	27	Memorial Day - Schools and Offices Closed.
	29	Last day of school for students pending weather make-up days.
	<b>NOTE:</b>	<b>High school graduations</b> are not set until after Spring Break and all make-up days have been announced. Calendars will be updated after the graduation schedule is released.
	30 - 31	Possible weather make-up days.
June 3 - 12		Possible weather make-up days.

**NOTE:** Weather make-up days are scheduled at the superintendent's discretion and the FCPS calendars are updated after each official announcement. Go to [www.fcps.net/weather](http://www.fcps.net/weather) for updates. Graduation dates and summer school dates will not be decided until after Spring Break and all make-up days have been announced.



Please check the Henry Clay website at [www.henryclay.fcps.net](http://www.henryclay.fcps.net) for important dates about upcoming events. We also send out updates and reminders on our Infinite Campus Messenger. Make sure your email address is correct on Infinite Campus.