



2020-21 GUIDE FOR THE
**COLLEGE-BOUND
STUDENT-ATHLETE**

TABLE OF CONTENTS

How to Use This Guide

This guide answers questions for student-athletes and parents navigating the initial-eligibility process.

1

What is the NCAA?

Find out who makes up the NCAA membership and how the Association works.

2

NCAA Sports

Learn about the 24 NCAA sports offered.

3

Scholarships

Learn about scholarship opportunities at NCAA schools.

3

National Letter of Intent

Useful information about the National Letter of Intent.

4

Thinking of Going Pro?

There are more than 480,000 student-athletes; less than 2% go pro.

4

Our Three Divisions

The NCAA's three divisions (I, II and III) were created to align like-minded campuses.

5

Time Management

What Division I, II and III student-athletes should expect.

6

Initial Eligibility

Follow a grade-by-grade timeline for navigating the initial-eligibility process.

9

Student Registration

If you want to play sports at an NCAA Division I or II school, you need to register for a Certification account.

11

Test Scores

Send all your SAT/ACT scores to the Eligibility Center.

13

Transcripts

Submit a six-semester and final high school transcript.

14

Equivalency Tests/Diplomas

Check the guidelines for using an equivalency test as proof of graduation.

14

What is a Core Course?

Learn the types of courses that will help you meet the Divisions I and II standards.

15

Nontraditional and Online Courses

Learn the types of nontraditional courses that will help you meet the Divisions I and II standards.

16

Grade-Point Average

Your core-courses GPA is based on the grades you earn in NCAA-approved core courses.

17

Division I Academic Standards

Learn the standards to compete at a Division I school.

18

Division I Sliding Scale

Learn the SAT/ACT score needed to match your core-course GPA for Division I.

20

Division I Worksheet

Use this worksheet to track your progress toward your Division I initial eligibility.

21

Division II Academic Standards

Learn the standards to compete at a Division II school.

22

Division II Sliding Scale

Learn the SAT/ACT score needed to match your core-course GPA for Division II.

24

Division II Worksheet

Use this worksheet to track your progress toward your Division II initial eligibility.

25

Division III Information

Learn about Division III and registering for a free Profile Page account for more information about college sports.

26

Amateurism

Learn which activities may impact your amateur status.

27

International Students

Useful information for international students.

29

Home School Students

Useful information for home school students.

30

Education-Impacting Disabilities

Information on accommodations for students with EIDs.

31

Important Recruiting Terms

Learn some key terms about the initial-eligibility and recruiting processes.

32

Recruiting Calendars

Learn more about the recruiting rules for Divisions I, II and III.

33

Questions to Ask

Review some areas to ask about during an official or unofficial visit throughout the recruiting process.

36

WHO SHOULD USE THIS GUIDE?

This guide answers important questions for four groups of people involved in the NCAA initial-eligibility process:

- High school students who hope to compete in college sports at an NCAA Division I or II school.
- Parents, guardians and family members of high school students.
- High school counselors and athletics administrators.
- High school and nonscholastic coaches.

HAVE A QUESTION ABOUT NCAA ELIGIBILITY?

Find answers to many typical questions about NCAA eligibility by:

- Reading this guide.
- Searching frequently asked questions at ncaa.org/studentfaq.
- Visiting ncaa.org/playcollegesports.
- Visiting the Help section of eligibilitycenter.org.
- Calling the NCAA Eligibility Center at 877-262-1492.



NCAA ELIGIBILITY CENTER INFORMATION

ONLINE

ncaa.org/playcollegesports
eligibilitycenter.org

Follow us:

Twitter @NCAAEC

Instagram @playcollegesports

Facebook @NCAAEC

CONTACT

U.S. and Canada (except Quebec)
(toll free): 877-262-1492

International (including Quebec):
ncaa.org/contactinternational

CERTIFICATION PROCESSING

NCAA Eligibility Center
Certification Processing
P.O. Box 7136
Indianapolis, IN 46207-7136

OVERNIGHT DELIVERY

NCAA Eligibility Center
Certification Processing
1802 Alonzo Watford Sr. Drive
Indianapolis, IN 46202



WELCOME FROM THE PRESIDENT

Dear college-bound student-athlete:

I am glad you want to pursue your education and sport at an NCAA member school. The NCAA strives to make sure college sports provide a pathway to opportunity and lifelong success for the nearly half a million student-athletes we serve across 24 sports and three divisions. Our unique model fosters academic and athletic achievement to ensure your college experience shapes your leadership skills and personal development. No matter what career path you ultimately choose, your college degree will serve you far beyond your final game.

This guide is designed to equip you with information about academic requirements to compete, and inform you about what to expect as you become a student-athlete in one of our three divisions. The NCAA wants to ensure high school athletes meet academic standards that will best prepare them to succeed in college. Initial eligibility determines your ability to receive an athletics scholarship and practice and compete in your first year as a full-time college student.

I encourage you to take an active role in the process of preparing for college. Our more than 1,100 member schools sponsor tremendous academics and athletics programs, so it is never too early to start looking for your best fit. You should also communicate closely with your high school counselors, coaches, parents/guardians and mentors as you transition to college.

I hope this guide helps educate you, your family and high school administrators about the initial-eligibility process for NCAA Divisions I and II schools. If you are interested in NCAA Division III, please visit ncaa.org/d3 or read **page 26** to learn more about the initial-eligibility process in Division III.

If you have any questions, please reach out to us. My staff in the NCAA Eligibility Center strives to make your registration and certification experience positive and helpful.

I wish you the best of luck as you embark on this important journey, and I look forward to your future success.

All the best,

Mark Emmert
NCAA President



WHAT IS THE NCAA?

The National Collegiate Athletic Association is an organization dedicated to providing a pathway to opportunity for college athletes. More than 1,100 colleges and universities are members of the NCAA. Those schools work together with the NCAA national office and athletics conferences across the country to support nearly half a million college athletes that make up 19,500 teams competing in NCAA sports.

The NCAA's diverse members include schools ranging in size from those with hundreds of students to those with tens of thousands. The NCAA's current three-division structure was adopted in 1973 to create a fair playing field for teams from similar schools and provide college athletes more opportunities to participate in national championships.

Among the three NCAA divisions, Division I schools generally have the biggest student bodies, manage the largest athletics budgets

and offer the highest number of athletics scholarships. The Division II approach provides growth opportunities through academic achievement, learning in high-level athletics competition and a focus on service to the community. The Division III experience offers participation in a competitive athletics environment that pushes college athletes to excel on the field and build upon their potential by tackling new challenges across campus.

To learn more about the pathway that's right for you, visit ncaa.org/divisions.

The NCAA membership and national office work together to help more than 480,000 student-athletes develop leadership, confidence, discipline and teamwork through college sports.

HELPFUL HINTS

- Visit ncaa.org/playcollegesports to learn more about opportunities available at NCAA schools.
- Know the academic standards for Division I and Division II.
- Find your high school's list of NCAA-approved core courses at eligibilitycenter.org/courselist.
- Register with the NCAA Eligibility Center at eligibilitycenter.org during your freshman year if you are interested in playing college sports.
- After four semesters of high school, ask your counselor to upload official transcripts from all high schools you have attended to your NCAA Eligibility Center account.

NCAA SPORTS

The NCAA conducts 90 national championships in 24 sports across Divisions I, II and III, with 45 championships administered for women and 42 for men. That means almost 54,000 student-athletes participate in NCAA championships each year.

From signature events like the NCAA March Madness® men’s and women’s basketball tournaments to rowing, rifle, softball and skiing, the NCAA administers championships to ensure student-athletes have a first-class experience. But the NCAA is also committed to quality events for everyone involved, from the coaches to the fans and broadcast audiences.

It is important to the NCAA that our championships have a positive impact on the communities that host them. The NCAA hosts youth clinics and various fan events to complement the competition — creating what is hoped to be a championship experience for everyone involved.

FALL SPORTS		WINTER SPORTS		SPRING SPORTS		EMERGING SPORTS
Men:	Women:	Men:	Women:	Men:	Women:	Women:
Cross Country	Cross Country	Basketball	Basketball	Baseball	Beach Volleyball	Acrobatics and Tumbling
Football	Field Hockey	Fencing	Bowling	Golf	Golf	Equestrian
Soccer	Soccer	Gymnastics	Fencing	Lacrosse	Lacrosse	(Divisions I and II only)
Water Polo	Volleyball	Ice Hockey	Gymnastics	Outdoor Track and Field	Outdoor Track and Field	Rugby
		Indoor Track and Field	Ice Hockey	Tennis	Rowing	Triathlon
		Rifle	Indoor Track and Field	Volleyball	Softball	Women's Wrestling
		Skiing	Rifle		Tennis	
		Swimming and Diving	Skiing		Water Polo	
		Wrestling	Swimming and Diving			

SCHOLARSHIPS

NCAA Divisions I and II schools provide more than \$2.7 billion in athletics scholarships annually to more than 150,000 student-athletes. Division III schools do not offer athletics scholarships.

Only about **2%** of high school athletes are awarded athletics scholarships to compete in college. Of the student-athletes participating in sports with professional leagues, very few become professional athletes. A college education is the most rewarding benefit of your student-athlete experience.

Division I schools may provide tuition and fees, room and board, books and other expenses related to attendance at the school. Division II full scholarships cover tuition and fees, room, board and course-related books and supplies. Most student-athletes who receive athletics scholarships receive an amount covering a portion of these costs. Many student-athletes also benefit from academic scholarships, NCAA financial aid programs such as the NCAA Division I Student Assistance Fund, and need-based aid such as federal Pell Grants. You must report all financial aid you receive to your NCAA school's financial aid office. If you have questions about what financial aid can be accepted, contact your NCAA school's financial aid office and athletics department for help.

Division I schools may provide you with multiyear scholarships. Division II schools must provide you with a one-year scholarship. Additionally, Divisions I and II schools may pay for you to finish your bachelor's or master's degrees after you finish playing NCAA sports. NCAA rules require you to be registered with the NCAA Eligibility Center in order to go on an official visit, receive a written offer of financial aid or sign a National Letter of Intent.

If a school plans to reduce or not renew your aid, the school must notify you in writing by July 1 and provide an opportunity for you to appeal. In most cases, the head coach decides who receives a scholarship, the scholarship amount and whether it will be renewed.

Contact the NCAA school you hope to attend for more detailed information about NCAA financial aid rules.

NATIONAL LETTER OF INTENT

By signing a National Letter of Intent, you are agreeing to attend a Division I or II college for one academic year. NLI member institutions agree to provide athletics financial aid to you for a minimum of one academic year as long as you are admitted to the school and are eligible for financial aid under NCAA rules.

The NLI is voluntary and not required for you to receive financial aid or participate in sports. Signing an NLI ends the recruiting process because coaches are prohibited from recruiting student-athletes who have signed NLIs with other NLI member institutions.

If you sign an NLI but decide to attend another college, you may request a release, but it is the school's discretion to grant your NLI release or not. If you sign an NLI with one school but attend a different school, you lose one full year of eligibility and must complete a full academic year at the new school before being eligible to compete. If you have questions about the NLI, visit nationalletter.org.



THINKING OF GOING PRO?

There are more than 480,000 NCAA student-athletes, and **less than 2%** will go pro in their sport.

	MEN'S BASKETBALL	WOMEN'S BASKETBALL	FOOTBALL	BASEBALL	MEN'S ICE HOCKEY
High School Student-Athletes	540,769	399,067	1,006,013	482,740	35,283
NCAA Student-Athletes	18,816	16,509	73,712	36,011	4,323
NCAA Student-Athletes Drafted	52	36	254	791	71
*Percent High School to NCAA	3.5%	4.1%	7.3%	7.5%	12.3%
*Percent NCAA to Professional	1.2%	0.8%	1.6%	9.9%	7.4%

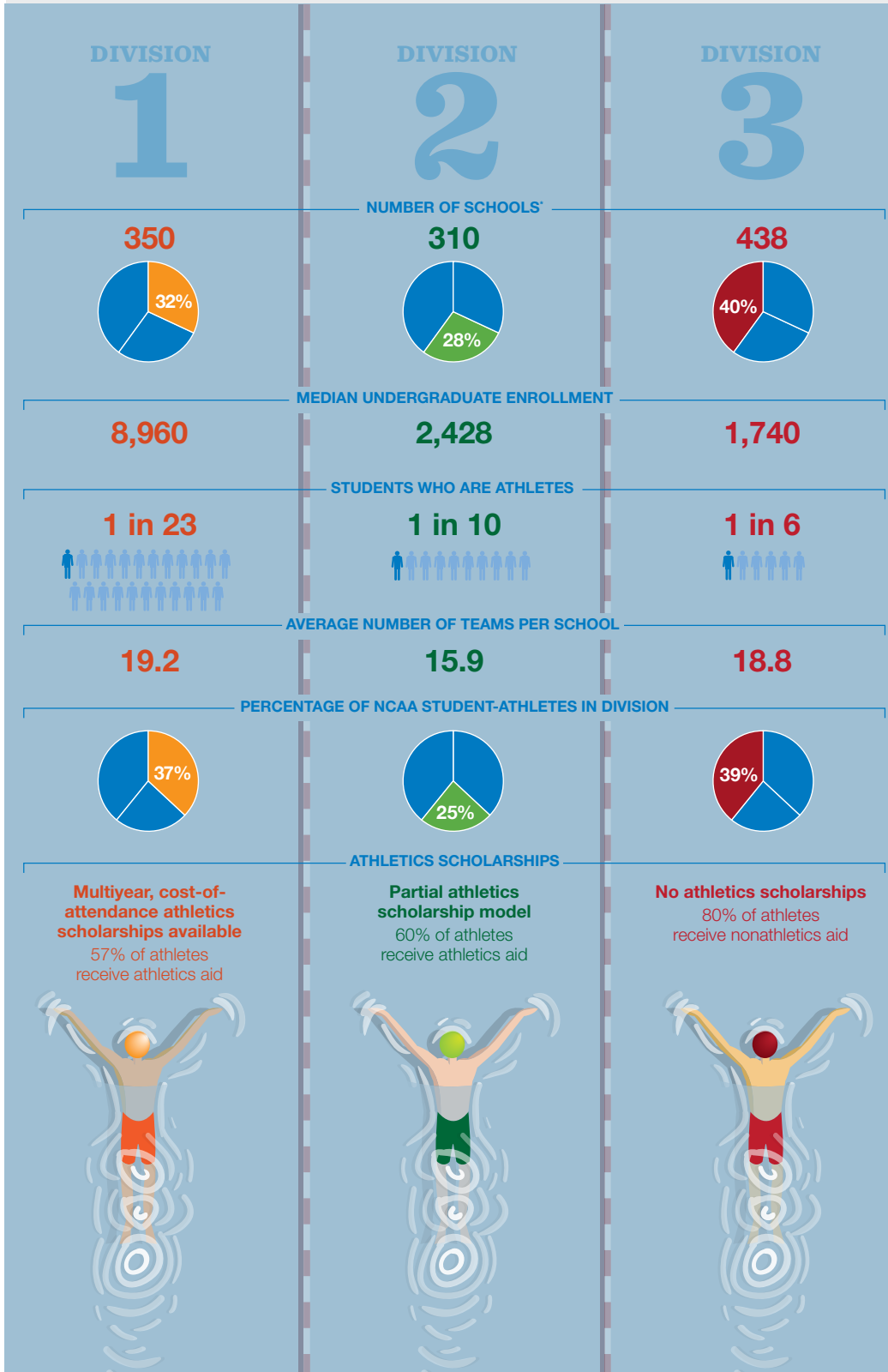
*Percentages based on estimated data.

For the rest, the experiences of college athletics and the life lessons they learn along the way will help them as they pursue careers in business, education, athletics administration, communications, law, medicine and many more fields. Education is a vital part of the college athletics experience, and student-athletes treat it that way.

Overall, student-athletes graduate at higher rates than their peers in the student body, and those rates rise each year. For more information on graduation rates, search for "graduation rates" on ncaa.org.

Our Three Divisions

The NCAA's three divisions were created in 1973 to align like-minded campuses in the areas of philosophy, competition and opportunity.



What are the eligibility requirements in each division?

College-bound students who want to compete at a Division I or Division II school must meet standards set by NCAA members. For Division III, athletes must meet the admissions standards set by the school. Eligibility standards can be found at eligibilitycenter.org.

How is each division governed?

NCAA schools develop and approve legislation for their own divisions. Groups of presidents and chancellors lead each division in the form of committees with regularly scheduled meetings.

Did you know?



DI student-athletes graduate at a higher rate than the general student body.

DII is the only division with schools in Alaska, Puerto Rico and Canada.



DIII's largest school has 25,725 undergraduates. The smallest? 285.

Learn more at ncaa.org/about.

*Numbers are from 2019-20. All other figures are from 2018-19.

NCAA is a trademark of the National Collegiate Athletic Association. Updated January 2020.

INITIAL ELIGIBILITY

Initial-eligibility standards help ensure you are prepared to succeed in college. The eligibility process also protects the fairness and integrity of college sports by ensuring student-athletes are amateurs.

If you want to practice, compete and receive an athletics scholarship during your first year at a Division I or II school, the NCAA Eligibility Center must certify you as eligible (eligibility for Division III is determined on campus). Throughout the process, NCAA Eligibility Center staff members partner with students and their families, as well as high school administrators and coaches, to guide you on your journey.

REMEMBER



As a college-bound student-athlete, you are responsible for your eligibility — that means planning ahead, taking high school classes seriously and protecting your amateur status. It can be a difficult first step, but the benefits of being a student-athlete are worth the effort.



HIGH SCHOOL TIMELINE

9TH GRADE



- *Start planning now!* Take the right courses and earn the best grades possible.
- Find your high school's list of NCAA-approved core courses at eligibilitycenter.org/courselist.
- Sign up for a free Profile Page account at eligibilitycenter.org for information on NCAA requirements.

10TH GRADE

REGISTER



- If you fall behind academically, ask your counselor for help finding approved courses you can take.
- Register for a Profile Page account or Certification account with the NCAA Eligibility Center at eligibilitycenter.org.
- Monitor your Eligibility Center account for next steps.
- At the end of the year, ask your counselor at each high school or program you attended to upload your official transcript to your Eligibility Center account.

11TH GRADE



- Check with your counselor to make sure you are on track to complete the required number of NCAA-approved core courses and graduate on time with your class.
- Take the SAT/ACT and submit your scores to the Eligibility Center using code 9999.
- Ensure your sports participation information is correct in your Eligibility Center account.
- At the end of the year, ask your counselor at each high school or program you attended to upload your official transcript to your Eligibility Center account.

12TH GRADE



- Complete your final NCAA-approved core courses as you prepare for graduation.
- Take the SAT/ACT again, if necessary, and submit your scores to the Eligibility Center using code 9999.
- Request your final amateurism certification beginning April 1 (fall enrollees) or Oct. 1 (winter/spring enrollees) in your Eligibility Center account at eligibilitycenter.org.
- After you graduate, ask your counselor to upload your final official transcript with proof of graduation to your Eligibility Center account.
- *Reminder:* Only students on an NCAA Division I or II school's institutional request list will receive a certification.

STUDENT REGISTRATION


If you want to play NCAA sports at a Division I or II school, you need to register with the NCAA Eligibility Center at eligibilitycenter.org. Plan to register during your freshman year of high school. The information below is intended to help guide you through the registration process.

To get started, choose from our two account types:

1. Profile Page Account: If you plan to compete at a Division III school or currently are not sure in which division you want to compete, create a Profile Page account. If at any time you wish to pursue a Division I or II path, you'll be able to transition to a Certification account. (You cannot move from a Certification account to a Profile Page account.)

2. Certification Account: You must be certified by the NCAA Eligibility Center to compete at an NCAA Division I or II school. Before you can make official visits or sign a Division I or Division II National Letter of Intent, you must have completed the Certification account registration (including payment or fee waiver).

For Certification accounts, please allow between 30 and 45 minutes to register completely. If you need to exit and come back at a later time, you can save and exit once your account is created.

 Reference the "Help" section (located in the top task bar) for assistance with your questions.

Have eligibility or registration questions?

If you have questions about your eligibility or the registration process not addressed within this guide, reach out to us! We're here to guide you through your journey. Here's some additional sources of information that may help:

- Search our frequently asked questions at ncaa.org/studentfaq.
- *Domestic students and Canadian students (except Quebec):* Call us toll free at 877-262-1492.
- *International students:* Use our **International Contact Form** (ncaa.org/contactinternational) to submit questions.

Important Information for My NCAA Eligibility Center Account



Date I registered: _____

My NCAA ID#: _____

My email address: _____

My high school(s) attended: _____

Date my six-semester transcript was sent: _____

Date my test score was sent: _____

Date my final transcript (with proof of graduation) was sent: _____

ELIGIBILITY CENTER REGISTRATION ESSENTIALS

Below are some items you should have with you as you create an account at eligibilitycenter.org:

VALID EMAIL FOR STUDENT

To register, you need a valid email address that you check regularly and will have access to *after* high school. The NCAA Eligibility Center uses email to update you about your account throughout the process. *Please note:* If you have a sibling who has previously registered, you will need to use a different email address than the one in your sibling's account.

BASIC STUDENT PERSONAL INFORMATION

This includes information such as your name, gender, date of birth, primary and secondary contact information and address.

BASIC STUDENT EDUCATION HISTORY

We will ask you to provide details about all secondary and high schools and additional programs you have attended in the United States and internationally. Be sure to include all schools, regardless of whether you received grades or credits. If you attended ninth grade at a junior high school located in the same school system in which you later attended high school, do not list the ninth-grade school.

STUDENT SPORTS PARTICIPATION HISTORY

Select the sport(s) you plan to participate in at an NCAA school. For Certification accounts, we will ask

you to provide details for any expenses or awards you received, any teams you have practiced or played with or certain events in which you participated. We also ask about any individuals who have advised you or marketed your skills in a particular sport. This information helps the **NCAA Eligibility Center** certify your amateur status when requested by you or an NCAA school.

PAYMENT (CERTIFICATION ACCOUNTS ONLY)

Your Certification account registration is complete only after your registration fee is paid (or upon submission of a fee waiver, if you are eligible). You may pay online by debit, credit card or e-check. The registration fee for students in the United States, U.S. territories (includes American Samoa, Guam, Northern Mariana Islands, Puerto Rico and U.S. Virgin Islands) and Canada is \$90. The fee for all other international students is \$150. Profile Pages do not have a fee.

*All fees are nonrefundable once you have successfully registered. If you completed a duplicate registration and paid your registration fee twice, you may be eligible for a refund of the duplicate registration fee. To receive a refund, you will need to complete and submit an **NCAA refund form**.*

Fee Waiver

If you received a waiver of the SAT/ACT fee (*not* the same as a U.S. state voucher), you are eligible for a waiver of the Certification account registration fee. After you complete your registration, ask an authorized official from your current high school to submit your fee waiver documentation online.

Please note: You must be a U.S. citizen or a foreign national taking the SAT/ACT in the United States or its territories. Students from countries other than the United States or its **territories** are not eligible for a fee waiver.

SAT

In order to be eligible for an SAT fee waiver, you must meet one of these indicators of economic need:

- You are enrolled in a program for the economically disadvantaged such as AVID or TRIO.
- Your family's annual income falls within the levels listed by the U.S. Department of Agriculture (USDA) for free or reduced-price lunches.
- Your family receives public assistance.
- Your family lives in federally subsidized public housing.
- You live in a foster home.

ACT

In order to be eligible for an ACT fee waiver, you must meet one of these indicators of economic need:

- Your family receives low-income public assistance.
- Your family income is at or below the Bureau of Labor Statistics Low Standards Budget.
- You are a ward of the state.
- You live in a foster home.
- You are homeless.
- You participate in free or reduced-price lunch program at school.
- You participate in a federally funded TRIO Program such as Upward Bound.

Home School Students

If you are a home school student in the United States or U.S. territories who cannot afford to pay the test fees, you must provide proof of eligibility to your local high school or agency administrator. Only a school or agency administrator can provide you with the fee waiver card for the appropriate test.

TEST SCORES

Every time you register for the SAT or ACT, use the NCAA Eligibility Center code **9999** to send your scores directly to us from the testing agency.

Please note:

- Tests scores on transcripts can NOT be used in your academic certification.
- The NCAA Eligibility Center does not accept SAT subject test scores.

SAT

A combined SAT score is calculated by adding your critical reading and math subscores.

ACT

An ACT sum score is calculated by adding your English, math, reading and science subscores.

Sliding Scales

On our sliding scale, you can see your SAT or ACT score and the GPA that is required for that score.

- For the Division I sliding scale, [see page 20](#).
- For the Division II sliding scale, [see page 24](#).

Did you take the SAT/ACT more than once? You may take the SAT or ACT an unlimited number of times before you enroll full time in college. If you take either test more than once, the best subscore from different tests are used to give you the best possible score. We will use your highest SAT and/or ACT score in your academic certification to provide you the best result possible.

Puerto Rico

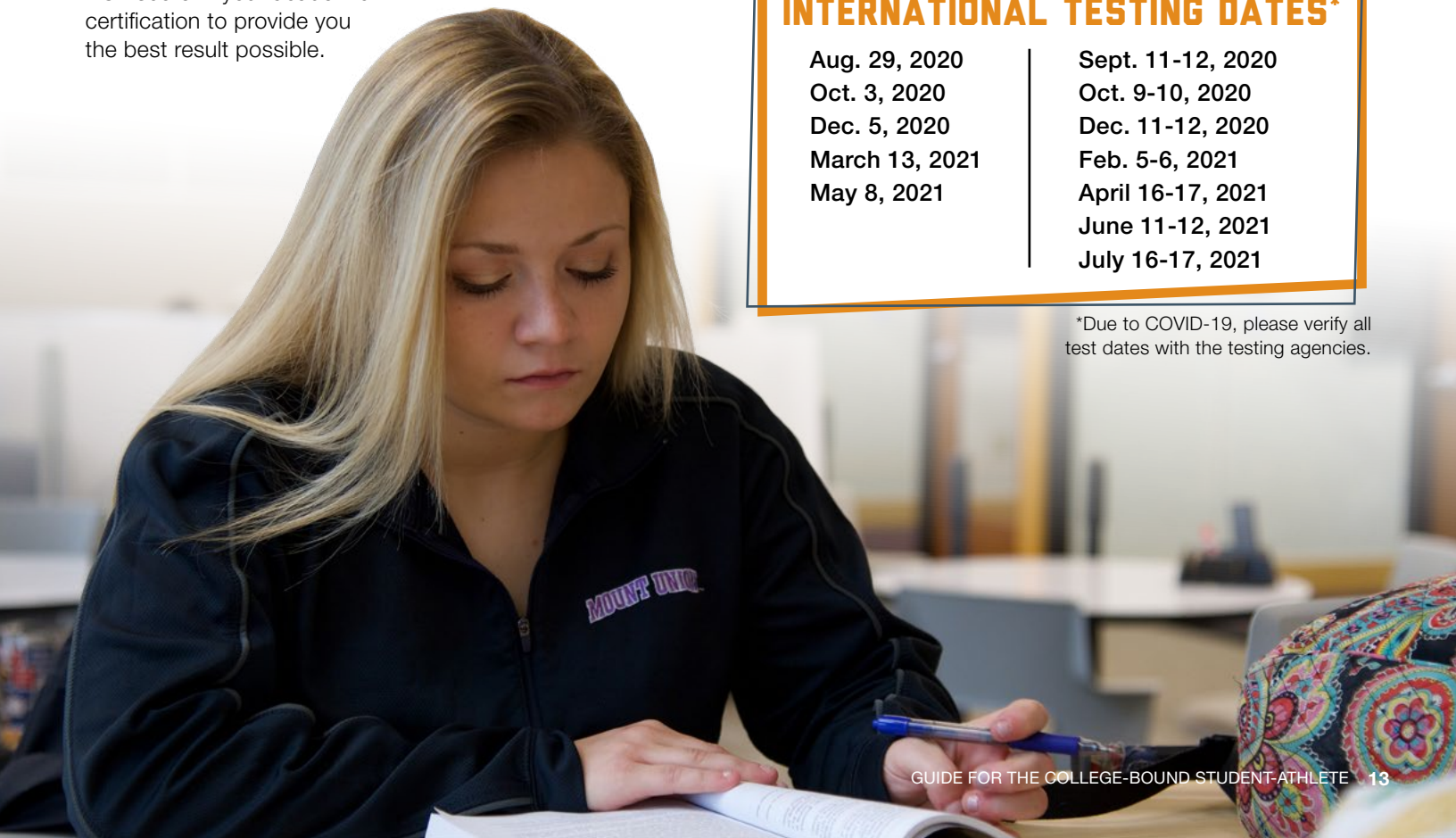
If you plan to enroll in a Division II school in Puerto Rico, you may use a minimum combined score on the Prueba de Aptitud Académica verbal and math reasoning sections of 730 to satisfy the test-score requirement. For more information, visit ncaa.org/student-athletes/future/puerto-rico.

Testing Dates

The NCAA Eligibility Center accepts national SAT and ACT exams and state-administered ACT exams. Domestic testing dates apply to the U.S., U.S. territories, Puerto Rico and Canada. All others are under the international dates.

SAT	ACT
NATIONAL TESTING DATES*	
Aug. 29, 2020	Sept. 12, 2020
Oct. 3, 2020	Oct. 24, 2020
Nov. 7, 2020	Dec. 12, 2020
Dec. 5, 2020	Feb. 6, 2021
March 13, 2021	April 17, 2021
May 8, 2021	June 12, 2021
June 5, 2021	July 17, 2021
INTERNATIONAL TESTING DATES*	
Aug. 29, 2020	Sept. 11-12, 2020
Oct. 3, 2020	Oct. 9-10, 2020
Dec. 5, 2020	Dec. 11-12, 2020
March 13, 2021	Feb. 5-6, 2021
May 8, 2021	April 16-17, 2021
	June 11-12, 2021
	July 16-17, 2021

*Due to COVID-19, please verify all test dates with the testing agencies.



TRANSCRIPTS

After completing four semesters of high school, ask your school counselor to upload an official transcript to your NCAA Eligibility Center account. If you have attended more than one high school or took courses from more than one program, the Eligibility Center needs an official transcript from *all* high school(s) or program(s) you attended. You will also need to ask your school counselor to send your final transcript with proof of graduation once you have completed high school. *Please note:* The NCAA Eligibility Center does not accept grades from one high school or program transcribed on another high school's transcript.

High schools have the capability to upload transcripts directly to a student's account for free from the High School Portal. As with other electronic transcript providers, this process is much quicker than using the U.S. Postal Service or any overnight delivery method. Students should contact their school counselor to ask for their transcript to be uploaded or sent electronically through one of the approved e-transcript providers listed below:

- National Transcript Center.
- Parchment.
- Scrip-Safe/Credentials.
- Scribbles Software.
- USMO ET.
- XAP.
- Naviance.
- State of Georgia: DIRECT.
- Cialfo.

REMEMBER

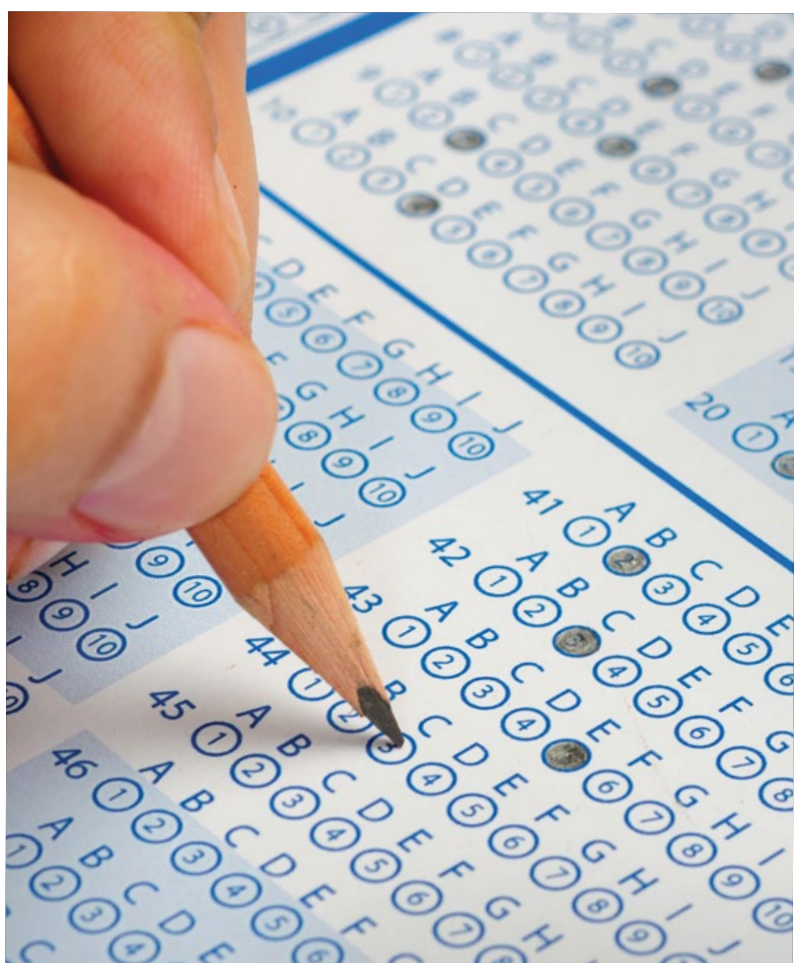


If you have attended more than one high school or took courses from more than one program, the NCAA Eligibility Center needs an official transcript from ALL high schools or programs.

In order to send a transcript by U.S. mail or through an overnight or express delivery service, please use the appropriate address on page 1.

- *International students:* For information on proper submission procedures for transcripts and academic records, **see page 29** or visit ncaa.org/international.

Note: Some approved programs that have a list of NCAA-approved courses are not credit-awarding institutions and, therefore, do not produce official transcripts. If you attend an approved program that does not award credit, a grade report from the program should be submitted.



EQUIVALENCY TESTS/DIPLOMAS

A state high school equivalency test (e.g., General Educational Development) may be accepted as proof of graduation under certain conditions, but it will not satisfy requirements for core courses, GPA or SAT/ACT scores. The equivalency test may be accepted as proof of graduation if taken after the graduation date of your class and before

full-time enrollment into any college or university. You will need to mail an official copy of the applicable certificate along with your state high school equivalency test scores to the NCAA Eligibility Center. You can contact your state education agency to request the certificate and test scores to be sent to the NCAA Eligibility Center.

WHAT IS A CORE COURSE?

NCAA schools require college-bound student-athletes to build a foundation of high school courses (core courses) to prepare them for the academic expectations in college.

For a high school class to be an NCAA-approved core course, it *must* meet these conditions:

1. Be a four-year college preparatory course in one of these subject areas:
 - English.
 - Math (Algebra I or higher).
 - Natural/physical science.
 - Social science.
 - Foreign language.
 - Comparative religion or philosophy.
2. Be taught at or above your high school's regular academic level.
3. Receive credit toward high school graduation and appear on an official transcript with course title, grade and credit awarded.

Approved classes are added to your school's list of NCAA-approved core courses. Make sure you are taking courses on the approved list; ask your counselor if you need help.

What is Not a Core Course

Not all high school classes are NCAA-approved core courses. Some examples of courses that are not NCAA-approved core courses include:

- Courses in non-core areas, such as driver education, typing, art, music, physical education or welding.
- Courses that prepare students for the world of work or life, or for a two-year college or technical school, such as personal finance, consumer education or tech prep.
- Courses taught below grade level, at a slower pace or with less rigor or depth, such as basic, essential, fundamental or foundational courses.
- Credit-by-exam courses.

Core-Course Credits

You can earn credit for a core course only once. If you take a course that repeats the content of another core course, you earn credit for only one of these courses and the higher grade counts toward your core-course GPA. For more information on core-course credits, visit ncaa.org/student-athletes/future/core-courses.

Courses Taken Before High School

If you take a high school class such as Algebra I or Spanish I in eighth grade, the class may count toward your 16 core courses if it appears on your high school's list of NCAA-approved core courses and is shown on your high school transcript with grade and credit.

Courses Taken After High School

For information about courses taken after high school, see [page 20](#) for Division I or [page 23](#) for Division II.

College Courses, Dual-Enrollment Courses and Dual-Credit Courses

College courses may be used to satisfy NCAA core-course requirements if the courses are awarded a grade and credit by the high school for any student and meet all other requirements for core courses. College courses must be placed on the student's high school transcript with clarification of college completion.

REMEMBER

Find your high school's list of NCAA-approved core courses at eligibilitycenter.org/courselist.



NONTRADITIONAL AND ONLINE COURSES

Nontraditional courses are taught online or through distance learning, hybrid/blended, independent study, individualized instruction, correspondence or similar means.

Generally, for a nontraditional course to count as an NCAA-approved core course, it must meet *all* of the following requirements:

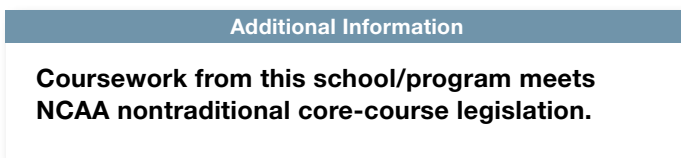
- The course must meet all requirements for an NCAA-approved core course.
- All students in the course must have regular instructor-led interaction for the purpose of instruction, evaluation and assistance for the duration of the course. This may include, for example, exchanging emails between the student and teacher, online chats, phone calls, feedback on assignments and the opportunity for the teacher to engage the student in individual or group instruction.
- The course must have a defined time period for completion. For example, it should be clear how long students are required to be enrolled and working in the course and how long a school would permit a student to work on a single nontraditional course.
- Student work (e.g., exams, papers, assignments) must be available for evaluation and validation.
- The course should be clearly identified as nontraditional on the student's official high school transcript.



A nontraditional course may not be approved for any of the following reasons:

- Does not have teacher-based instruction.
- Does not require regular and ongoing instructor-led interaction between the student and teacher.
- Does not require students to complete the entire course.
- Does not prepare students for four-year college class work.
- Does not have official student grade records.
- Does not meet NCAA core-course requirements.

When viewing the school/program's course list, you will find information about any nontraditional programs or courses in the "Additional Information" box as seen below.



REMEMBER



Log in to your NCAA Eligibility Center account frequently to update your school information if you take courses from additional academic programs.

To find out if a nontraditional program or course is approved, go to eligibilitycenter.org/courselist to search the school/program and view the respective additional information boxes.

GRADE-POINT AVERAGE

The NCAA Eligibility Center calculates your core-course grade-point average based on the grades you earn in NCAA-approved core courses. Only your best grades from the required number of NCAA core courses will be used.

Your GPA is calculated on a 4.000 scale. Numeric grades such as 92 or 87 are changed to letter grades such as A or B. As part of this calculation, each grade received is assigned “quality points,” as shown in the scale below. The NCAA Eligibility Center does not use plus or minus grades when calculating your GPA. For example, grades of B+, B and B- will each be worth three quality points. Weighted honors or

advanced placement courses may improve your core-course GPA but your high school must notify the NCAA Eligibility Center that it awards weighted grades in these classes.

In “Pass/Fail” grading situations, the NCAA Eligibility Center will assign your high school’s lowest passing grade for a course in which you received a “Pass” grade. For most high schools, the lowest passing grade is a D, so the NCAA Eligibility Center generally assigns a D as a passing grade. For Spring/Summer 2020 “Pass/Fail” grades, please see the **COVID-19 FAQ**.

Calculating Your Quality Points

In order to determine your quality points earned for each course, multiply the quality points for the grade by the amount of credit earned.

Examples:

- An A grade (4 points) for a trimester course (0.34 units):
 $4 \text{ points} \times 0.34 \text{ units} = 1.36 \text{ total quality points}$
- An A grade (4 points) for a semester course (0.50 units):
 $4 \text{ points} \times 0.50 \text{ units} = 2.00 \text{ total quality points}$
- An A grade (4 points) for a full-year course (1.00 units):
 $4 \text{ points} \times 1.00 \text{ units} = 4.00 \text{ quality points}$

Use the worksheets on **pages 21** and **25** to help determine your core-course GPA.

QUALITY POINTS

A = 4 points
B = 3 points
C = 2 points
D = 1 point

UNITS OF CREDIT

1 quarter unit = 0.25 units
1 trimester unit = 0.34 units
1 semester unit = 0.50 units
1 year = 1 unit



College athletics has really shaped my life by giving me a plethora of opportunities to pursue when my athletic career is over. Between the connections that are made with other student athletes, faculty and supporters, the opportunities are endless. Having the ability to get both my bachelor’s degree and my master’s degree, all while playing football, is an experience not many people can attest to. The hard work that has been put in is recognized by employers and sought after in even the biggest companies. Without collegiate athletics, these opportunities wouldn’t be there for me. To say that I am thankful for the NCAA would be an understatement.

Justice Littrell

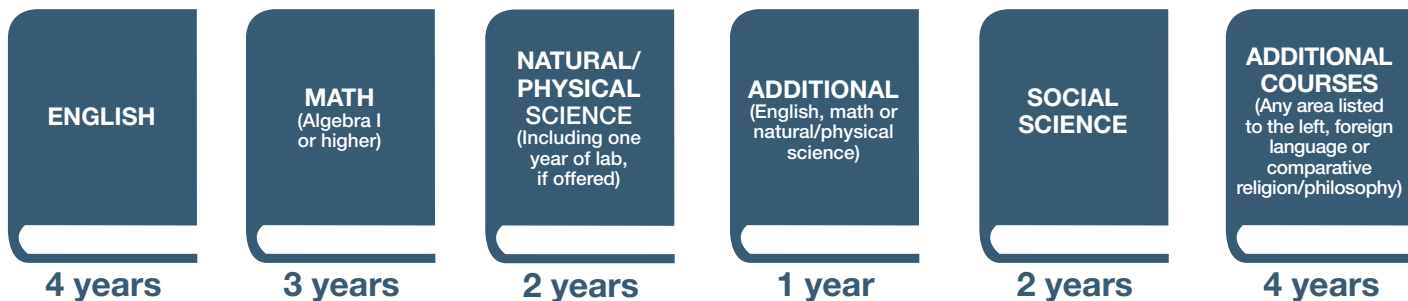
Football, University of Northern Colorado



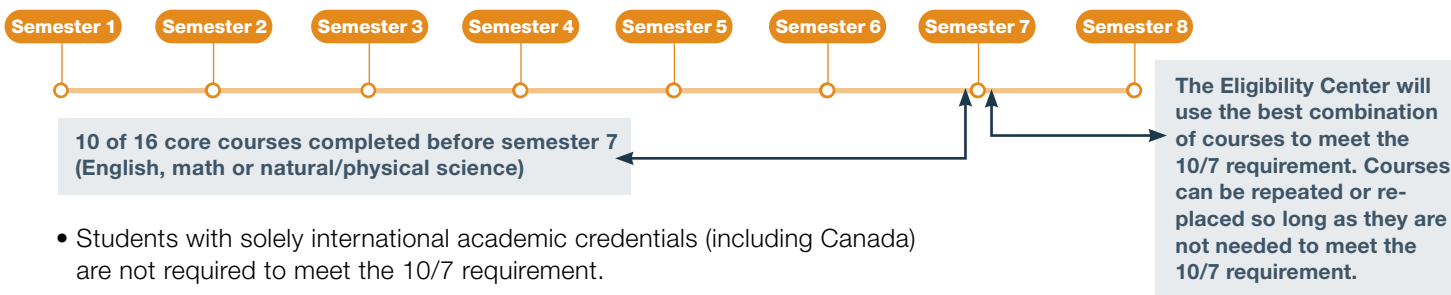
DIVISION I ACADEMIC STANDARDS

Division I schools require college-bound student-athletes to meet academic standards for NCAA-approved core courses, core-course GPA and test scores. To be eligible to practice, compete and receive an athletics scholarship in your first full-time year at a Division I school, you must graduate from high school and meet *all* of the following requirements:

1. Complete a total of 16 core courses in the following areas:



2. Complete 10 of your 16 core courses, including seven in English, math or natural/physical science, before the start of your seventh semester. Once you begin your seventh semester, any course that is needed to meet the 10/7 requirement cannot be replaced or repeated.



3. Complete the 16 NCAA-approved core courses in eight academic semesters or four consecutive academic years from the start of ninth grade. If you graduate from high school early, you still must meet core-course requirements.

4. Earn an SAT combined score or ACT sum score that matches your core-course GPA (minimum 2.300) on the Division I full-qualifier sliding scale. Review the sliding scale on **page 20** to ensure your score meets Division I requirements.

How to plan your high school courses to meet the 16 core-course requirement:

$$4 \times 4 = 16$$

9TH GRADE

- (1) English
- (1) Math
- (1) Science
- (1) Social Science and/or additional

4 CORE COURSES

10TH GRADE

- (1) English
- (1) Math
- (1) Science
- (1) Social Science and/or additional

4 CORE COURSES

11TH GRADE

- (1) English
- (1) Math
- (1) Science
- (1) Social Science and/or additional

4 CORE COURSES

12TH GRADE

- (1) English
- (1) Math
- (1) Science
- (1) Social Science and/or additional

4 CORE COURSES

Academic Certification Decisions

An academic certification will be conducted to determine if you meet the Division I academic standards. Academic certifications are required for all college-bound student-athletes planning to compete at a Division I school. (An amateurism certification is also required; **see page 27**.) The following items are required in order to complete your academic certification:

- A final official transcript with proof of graduation.
- Official transcripts from all high schools attended.
- Test scores.
- No open academic tasks in your Eligibility Center Certification account (**see page 11**).
- Be on a Division I school's institutional request list.

Being placed on a school's institutional request list notifies the NCAA Eligibility Center to complete an academic evaluation for you after all of your appropriate documents have been submitted.

If you are being recruited by a Division I school, below are the most common decisions you may receive once a certification has been completed.



EARLY ACADEMIC QUALIFIER

If you meet specific criteria after six semesters of high school, you may be deemed an early academic qualifier for Division I and may practice, compete and receive an athletics scholarship during your first year of full-time enrollment. To be an early academic qualifier, you will need:

- A minimum SAT combined score (math and critical reading) of 980 or ACT sum score of 75.
- A core-course GPA of 3.000 or higher in a minimum of 14 core courses in the following areas:
 - Three years of English.
 - Two years of math.
 - Two years of science.
 - Two additional years of English, math or natural/physical science.
 - Five additional core courses in any area.

A final high school transcript must be submitted to the NCAA Eligibility Center after high school graduation for all early academic qualifiers.



QUALIFIER

You may practice, compete and receive an athletics scholarship during your first year of full-time enrollment at an NCAA Division I school.



ACADEMIC REDSHIRT

You may receive an athletics scholarship during your first year of full-time enrollment and may practice during your first regular academic term but may NOT compete during your first year of enrollment. You must pass either eight quarter or nine semester hours to practice in the next term.



NONQUALIFIER

You will not be able to practice, compete or receive an athletics scholarship during your first year of enrollment at a Division I school.

What if I Don't Graduate on Time?

In Division I, if you do not graduate on time (in four years/eight semesters), the NCAA Eligibility Center will still use your grades and coursework for the first four years/eight semesters for your certification. You will still need to provide proof of graduation (once you graduate) and you may not use any coursework taken after your high school graduation toward your certification.

What if I Don't Meet the Division I Standards?

If you have not met all of the Division I academic standards, you may not compete in your first year at a Division I college. However, if you qualify as an academic redshirt, you may practice during your first term in college and receive an athletics scholarship for the entire year.

To qualify as an academic redshirt, you must graduate high school and meet all of the following academic standards:

- Complete 16 core courses.
- Earn an SAT combined score or ACT sum score matching your core-course GPA (minimum 2.000) on the Division I sliding scale (**see page 20**).

Courses Taken After High School

For Division I, only courses completed in your first eight semesters will qualify as core courses. If you graduate from high school on time (in eight semesters) with your incoming ninth-grade class, you may use one core-course unit completed in the year after graduation (summer or academic year) before full-time collegiate enrollment. You may complete the core course at a location other than the high school from which you graduated as long as the course is taken prior to full-time enrollment at any college or university. A college course taken after high school graduation may be

used toward your initial eligibility and awarded 0.5 units from your college transcript (unless awarded one full unit on your home high school transcript).

An additional core-course unit taken after on-time high school graduation cannot replace a course used to meet the core-course progression (10/7) requirement, but an additional core course after on-time graduation may replace one of the remaining six core-course units necessary to meet core-course requirements.

Sliding Scale for Division I

Division I uses a sliding scale to match test scores and GPAs to determine eligibility. The sliding scale balances your test score with your GPA. Find more information about test scores on [page 13](#) or visit ncaa.org/test-scores.

DIVISION I FULL QUALIFIER SLIDING SCALE		
Core GPA	SAT*	ACT Sum*
3.550	400	37
3.525	410	38
3.500	430	39
3.475	440	40
3.450	460	41
3.425	470	41
3.400	490	42
3.375	500	42
3.350	520	43
3.325	530	44
3.300	550	44
3.275	560	45
3.250	580	46
3.225	590	46
3.200	600	47
3.175	620	47
3.150	630	48
3.125	650	49
3.100	660	49
3.075	680	50
3.050	690	50
3.025	710	51
3.000	720	52
2.975	730	52
2.950	740	53
2.925	750	53
2.900	750	54
2.875	760	55
2.850	770	56
2.825	780	56
2.800	790	57
2.775	800	58

DIVISION I FULL QUALIFIER SLIDING SCALE		
Core GPA	SAT*	ACT Sum*
2.750	810	59
2.725	820	60
2.700	830	61
2.675	840	61
2.650	850	62
2.625	860	63
2.600	860	64
2.575	870	65
2.550	880	66
2.525	890	67
2.500	900	68
2.475	910	69
2.450	920	70
2.425	930	70
2.400	940	71
2.375	950	72
2.350	960	73
2.325	970	74
2.300	980	75
2.299	990	76
2.275	990	76
2.250	1000	77
2.225	1010	78
2.200	1020	79
2.175	1030	80
2.150	1040	81
2.125	1050	82
2.100	1060	83
2.075	1070	84
2.050	1080	85
2.025	1090	86
2.000	1100	86

ACADEMIC REDSHIRT

*Full sliding scale research between the new SAT and ACT is ongoing.

DIVISION I WORKSHEET

This worksheet is provided to assist you in monitoring your progress in meeting NCAA initial-eligibility standards. The NCAA Eligibility Center will determine your academic status after you graduate. Remember to check your high school's list of NCAA-approved core courses for the classes you have taken or plan to take.

Use the following scale: **A = 4 quality points; B = 3 quality points; C = 2 quality points; D = 1 quality point.**

ENGLISH (4 YEARS REQUIRED)						
10/7	COURSE TITLE	CREDIT	X	GRADE	=	QUALITY POINTS (MULTIPLY CREDIT BY GRADE)
✓	Example: English 9	.50		A		$(.5 \times 4) = 2$
	TOTAL ENGLISH UNITS					TOTAL QUALITY POINTS

MATHEMATICS (3 YEARS REQUIRED)						
10/7	COURSE TITLE	CREDIT	X	GRADE	=	QUALITY POINTS (MULTIPLY CREDIT BY GRADE)
✓	Example: Algebra I	1.0		B		$(1.0 \times 3) = 3$
	TOTAL MATHEMATICS UNITS					TOTAL QUALITY POINTS

NATURAL/PHYSICAL SCIENCE (2 YEARS REQUIRED)						
10/7	COURSE TITLE	CREDIT	X	GRADE	=	QUALITY POINTS (MULTIPLY CREDIT BY GRADE)
	TOTAL NATURAL/PHYSICAL SCIENCE UNITS					TOTAL QUALITY POINTS

ADDITIONAL YEAR IN ENGLISH, MATHEMATICS OR NATURAL/PHYSICAL SCIENCE (1 YEAR REQUIRED)						
10/7	COURSE TITLE	CREDIT	X	GRADE	=	QUALITY POINTS (MULTIPLY CREDIT BY GRADE)
	TOTAL ADDITIONAL UNITS					TOTAL QUALITY POINTS

SOCIAL SCIENCE (2 YEARS REQUIRED)						
10/7	COURSE TITLE	CREDIT	X	GRADE	=	QUALITY POINTS (MULTIPLY CREDIT BY GRADE)
	TOTAL SOCIAL SCIENCE UNITS					TOTAL QUALITY POINTS

ADDITIONAL ACADEMIC COURSES (4 YEARS REQUIRED)						
10/7	COURSE TITLE	CREDIT	X	GRADE	=	QUALITY POINTS (MULTIPLY CREDIT BY GRADE)
	TOTAL ADDITIONAL ACADEMIC UNITS					TOTAL QUALITY POINTS

	TOTAL QUALITY POINTS FROM EACH SUBJECT AREA / TOTAL CREDITS = CORE-COURSE GPA		/		=	
		Quality Points	/	Credits	=	Core-Course GPA

Sixteen core courses are required for your core-course GPA. Ten core courses must be completed before the seventh semester; seven of the 10 must be a combination of English, math or natural or physical science.

DIVISION II ACADEMIC STANDARDS

Division II schools require college-bound student-athletes to meet academic standards for NCAA-approved core courses, core-course GPA and test scores.



To be eligible to practice, compete and receive an athletics scholarship in your first full-time year at a Division II school, you must graduate from high school and meet *all* of the following requirements:

1. Complete 16 core courses in the following areas:

ENGLISH	MATH (Algebra I or higher)	NATURAL/ PHYSICAL SCIENCE (Including one year of lab, if offered)	ADDITIONAL (English, math or natural/physical science)	SOCIAL SCIENCE	ADDITIONAL COURSES (Any area listed to the left, foreign language or comparative religion/philosophy)
3 years	2 years	2 years	3 years	2 years	4 years

2. Earn an SAT combined score or ACT sum score that matches your core-course GPA (minimum 2.200) on the Division II full-qualifier sliding scale ([see page 24](#)).



Academic Certification Decisions

An academic certification will be conducted to determine if you meet the Division II academic standards. Academic certifications are required for all college-bound student-athletes planning to compete at a Division II school. (An amateurism certification is also required; **see page 27.**) The following items are required in order to complete your academic certification:

- A final official transcript with proof of graduation.
- Official transcripts from *all* high schools attended.
- Test scores.
- No open academic tasks.
- Be on a Division II school's institutional request list.

Being placed on a school's institutional request list notifies the NCAA Eligibility Center to complete an academic evaluation for you once all of your appropriate documents have been submitted.

If you are being recruited by a Division II school, below are the most common decisions you may receive once a certification has been completed.

EARLY ACADEMIC QUALIFIER

If you meet specific criteria listed below after six semesters, you may be deemed an early academic qualifier for Division II and may practice, compete and receive an athletics scholarship during your first year of full-time enrollment. To be an early academic qualifier, you will need:

- A minimum SAT combined score (math and critical reading) of 900 or ACT sum score of 68.
- A core-course GPA of 2.5 or higher in a minimum of 14 core courses in the following areas:
 - Three years of English.
 - Three years of math.
 - Two years of natural or physical science.
 - Six additional core courses in any area.

A final high school transcript must be submitted to the NCAA Eligibility Center after high school graduation for all early academic qualifiers.

QUALIFIER

You may practice, compete and receive an athletics scholarship during your first year of full-time enrollment at an NCAA Division II school.

PARTIAL QUALIFIER

You may receive an athletics scholarship and practice during your first year of full-time enrollment.

NONQUALIFIER

You will not be able to practice, compete or receive an athletics scholarship during your first year of full-time enrollment at a Division II school.

What if I Don't Meet the Division II Standards?

If you enroll full time at a Division II school and you have not met all Division II academic standards, you may not compete in your first year. However, if you meet the standards to be a partial qualifier, you may practice and receive an athletics scholarship in your first year at college. To be a partial qualifier, you must graduate high school and meet *all* of the following standards:

- Complete 16 core courses.
- Earn an SAT combined score or ACT sum score matching your core-course GPA (minimum 2.000) on the Division II partial-qualifier sliding scale (**see page 24**).

Core-Course Timeline

If you plan to attend a Division II school, you must complete 16 NCAA core courses after starting grade nine and before your first full-time college enrollment.

Courses Taken After High School

For Division II, you may use an unlimited number of core courses completed after graduation (summer or academic year) before full-time collegiate enrollment. You may complete the core course(s) at a location other than the high school from which you graduated. A college course taken after high school graduation can be used toward your initial eligibility and will be awarded 0.5 units (unless awarded one full unit by your home high school). It must appear on your home high school transcript with grade and credit.

Sliding Scale for Division II

Division II uses a sliding scale to match test scores and GPAs to determine eligibility. The sliding scale balances your test score with your GPA. Find more information about test scores on [page 13](#) or visit ncaa.org/test-scores.

DIVISION II FULL QUALIFIER SLIDING SCALE		
Core GPA	SAT*	ACT Sum*
3.300 & above	400	37
3.275	410	38
3.250	430	39
3.225	440	40
3.200	460	41
3.175	470	41
3.150	490	42
3.125	500	42
3.100	520	43
3.075	530	44
3.050	550	44
3.025	560	45
3.000	580	46
2.975	590	46
2.950	600	47
2.925	620	47
2.900	630	48
2.875	650	49
2.850	660	49
2.825	680	50
2.800	690	50
2.775	710	51
2.750	720	52
2.725	730	52
2.700	740	53
2.675	750	53
2.650	750	54
2.625	760	55
2.600	770	56
2.575	780	56
2.550	790	57
2.525	800	58
2.500	810	59
2.475	820	60
2.450	830	61
2.425	840	61
2.400	850	62
2.375	860	63
2.350	860	64
2.325	870	65
2.300	880	66
2.275	890	67
2.250	900	68
2.225	910	69
2.200	920	70 & above

DIVISION II PARTIAL QUALIFIER SLIDING SCALE		
Core GPA	SAT*	ACT Sum*
3.050 & above	400	37
3.025	410	38
3.000	430	39
2.975	440	40
2.950	460	41
2.925	470	41
2.900	490	42
2.875	500	42
2.850	520	43
2.825	530	44
2.800	550	44
2.775	560	45
2.750	580	46
2.725	590	46
2.700	600	47
2.675	620	47
2.650	630	48
2.625	650	49
2.600	660	49
2.575	680	50
2.550	690	50
2.525	710	51
2.500	720	52
2.475	730	52
2.450	740	53
2.425	750	53
2.400	750	54
2.375	760	55
2.350	770	56
2.325	780	56
2.300	790	57
2.275	800	58
2.250	810	59
2.225	820	60
2.200	830	61
2.175	840	61
2.150	850	62
2.125	860	63
2.100	860	64
2.075	870	65
2.050	880	66
2.025	890	67
2.000	900	68 & above

*Full sliding scale research between the new SAT and ACT is ongoing.

DIVISION II WORKSHEET

This worksheet is provided to assist you in monitoring your progress in meeting NCAA initial-eligibility standards. The NCAA Eligibility Center will determine your academic status after you graduate. Remember to check your high school's list of NCAA-approved core courses for the classes you have taken or plan to take.

Use the following scale: **A = 4 quality points; B = 3 quality points; C = 2 quality points; D = 1 quality point.**

ENGLISH (3 YEARS REQUIRED)															
COURSE TITLE	CREDIT	X	GRADE	=	QUALITY POINTS (MULTIPLY CREDIT BY GRADE)										
Example: English 9	.50		A		(.5 x 4) = 2										
TOTAL ENGLISH UNITS					TOTAL QUALITY POINTS										
MATHEMATICS (2 YEARS REQUIRED)															
COURSE TITLE	CREDIT	X	GRADE	=	QUALITY POINTS (MULTIPLY CREDIT BY GRADE)										
Example: Algebra I	1.0		B		(1.0 x 3) = 3										
TOTAL MATHEMATICS UNITS					TOTAL QUALITY POINTS										
NATURAL/PHYSICAL SCIENCE (2 YEARS REQUIRED)															
COURSE TITLE	CREDIT	X	GRADE	=	QUALITY POINTS (MULTIPLY CREDIT BY GRADE)										
TOTAL NATURAL/PHYSICAL SCIENCE UNITS					TOTAL QUALITY POINTS										
ADDITIONAL YEARS IN ENGLISH, MATHEMATICS OR NATURAL/PHYSICAL SCIENCE (3 YEARS REQUIRED)															
COURSE TITLE	CREDIT	X	GRADE	=	QUALITY POINTS (MULTIPLY CREDIT BY GRADE)										
TOTAL ADDITIONAL UNITS					TOTAL QUALITY POINTS										
SOCIAL SCIENCE (2 YEARS REQUIRED)															
COURSE TITLE	CREDIT	X	GRADE	=	QUALITY POINTS (MULTIPLY CREDIT BY GRADE)										
TOTAL SOCIAL SCIENCE UNITS					TOTAL QUALITY POINTS										
ADDITIONAL ACADEMIC COURSES (4 YEARS REQUIRED)															
COURSE TITLE	CREDIT	X	GRADE	=	QUALITY POINTS (MULTIPLY CREDIT BY GRADE)										
TOTAL ADDITIONAL ACADEMIC UNITS					TOTAL QUALITY POINTS										
<table border="0" style="width: 100%; border-collapse: collapse;"> <tr> <td style="width: 33%;">TOTAL QUALITY POINTS FROM EACH SUBJECT AREA / TOTAL CREDITS = CORE-COURSE GPA</td> <td style="width: 10%; text-align: center;">/</td> <td style="width: 10%;"></td> <td style="width: 10%; text-align: center;">=</td> <td style="width: 37%;"></td> </tr> <tr> <td style="text-align: center;">QUALITY POINTS</td> <td style="text-align: center;">/</td> <td style="text-align: center;">CREDITS</td> <td style="text-align: center;">=</td> <td style="text-align: center;">CORE-COURSE GPA</td> </tr> </table>						TOTAL QUALITY POINTS FROM EACH SUBJECT AREA / TOTAL CREDITS = CORE-COURSE GPA	/		=		QUALITY POINTS	/	CREDITS	=	CORE-COURSE GPA
TOTAL QUALITY POINTS FROM EACH SUBJECT AREA / TOTAL CREDITS = CORE-COURSE GPA	/		=												
QUALITY POINTS	/	CREDITS	=	CORE-COURSE GPA											

DIVISION III INFORMATION

Division III institutions provide an integrated environment focusing on academic success while offering a competitive athletics environment. Division III rules minimize potential conflicts between athletics and academics and focus on regional in-season and conference play to maximize academic, co-curricular and extracurricular opportunities.

While Division III schools do not offer athletics scholarships, 80% of Division III student-athletes receive some form of merit or need-based financial aid.

If you are planning to attend a Division III school, you can create a free Profile Page account at eligibilitycenter.org to learn more about college sports. Division III schools set their own admissions and eligibility standards. You can visit ncaa.org/d3 or contact the Division III school you are planning to attend to learn more.



AMATEURISM

When you register for a Certification account with the NCAA Eligibility Center, you will be asked a series of questions about your sports participation to determine your amateur status. In some instances, the NCAA Eligibility Center staff may need to gather additional information to evaluate your amateur status.

Issues Reviewed as Part of the Amateurism Certification Process

- Delaying your full-time collegiate enrollment to participate in organized competition.
- Playing with professionals.
- Signing a contract with a professional team.
- Participating in tryouts or practices with a professional team.
- Receiving payment or preferential treatment/benefits for playing sports.
- Receiving prize money.
- Receiving benefits from an agent or prospective agent.
- Involvement with a recruiting service.

Requesting Final Amateurism Certification

College-bound student-athletes enrolling for the first time at a Division I or II school must receive a final amateurism certification before being eligible to compete. (This includes transfers from junior colleges, NAIA, international or Division III schools.) Students must request their final amateurism certification through their Eligibility Center account; the Eligibility Center staff cannot begin your amateurism certification without your request. *Please note:* You can request your final amateurism certification even if other tasks are still open in your account. When you can request your final amateurism certification depends on when you are starting at a Division I or II school:

Fall enrollment: If you are enrolling at a Division I or II school for the fall semester, you may request a final amateurism decision from the NCAA Eligibility Center on or after April 1 before your enrollment at an NCAA school.

Winter/Spring enrollment: If you are enrolling at a Division I or II school for the spring semester, you may request a final amateurism decision on or after Oct. 1 before your enrollment at an NCAA school.

Delayed Enrollment

After you graduate high school, you have a certain amount of time — called a “grace period” — to enroll full time at any two-year or four-year college or university. If you do not enroll at the first opportunity after your grace period and continue to compete in organized competition, you will use one season of NCAA eligibility for each calendar year during which you continue to compete. You also may be required to serve an academic year in residence at your NCAA institution before you can compete. For more information on delayed enrollment, please review the chart on [page 28](#).

M&W TENNIS		MEN'S ICE HOCKEY		M&W SKIING		ALL OTHER SPORTS	
DI Grace Period*	DII Grace Period*	DI Up to	DII Grace Period*	DI Up to	DII Grace Period*	DI Grace Period*	DII Grace Period*
6 MONTHS	12 MONTHS	21 ST BIRTHDAY	3 YEARS	21 ST BIRTHDAY	3 YEARS**	12 MONTHS	12 MONTHS

*A college-bound student-athlete's grace period is the period between their expected date of high school graduation and initial full-time collegiate enrollment.

**Competition must be sanctioned by the U.S. Ski and Snowboard Association or its international counterparts.

Frequently Asked Amateurism Questions

What is Organized Participation?

Participation is considered organized if ANY of the following exist:

- Official score is kept.
- Standings or statistics are maintained.
- Official timer or game officials are used.
- Admission is charged.
- Teams are regularly formed or team rosters are predetermined.
- Team uniforms are used.
- An individual or team is privately or commercially sponsored.
- The competition is either directly or indirectly sponsored, promoted or administered by an individual, an organization or any other agency.
- **Division I:** The competition is scheduled and publicized in advance.
- **Division II:** The competition is scheduled in advance.

Who is an Agent?

An agent is an individual who directly or indirectly represents you by marketing your athletics ability or reputation, or attempts to benefit from guiding you to a particular NCAA school or from your expected earnings as a professional athlete.

What is a Professional Team?

A professional team is one that declares itself as professional, or provides any player *more* than their actual and necessary expenses. Actual and necessary expenses are defined as:

- Meals and lodging directly tied to competition or practice directly related to the competition.
- Transportation expenses, such as to and from practice, training or competition.
- Apparel, equipment and supplies related to competition, or practice directly related to competition.
- Coaching and instruction, or the use of facilities and entry fees.
- Health or medical insurance, medical treatment and physical therapy directly associated with an individual's participation on a team or in an event.
- Other reasonable expenses such as laundry money.

Additional information on amateurism and recruiting/scouting services is available at ncaa.org/student-athletes/future/amateurism.

OVERVIEW OF NCAA DIVISIONS I AND II PRE-ENROLLMENT AMATEURISM BYLAWS

Before initial full-time enrollment at a college or university, may a college-bound student-athlete ...	Permissible in Division I?	Permissible in Division II?
Delay enrollment (grace period)?*	<p>Tennis (men and women): Yes, six months.</p> <p>Men's ice hockey and skiing (men and women): Yes, until 21st birthday.</p> <p>All other sports: Yes, 12 months.</p>	<p>Men's ice hockey and skiing (men and women): Yes, three years.**</p> <p>All other sports: Yes, 12 months.</p>
Use a recruiting or scouting service?	Yes. The fee the service charges cannot be based on receipt or the amount of an athletics scholarship.	Yes. The fee the service charges cannot be based on receipt or the amount of an athletics scholarship.
Receive funding from an outside source?	Yes, if the funding is less than or equal to the student-athlete's actual and necessary expenses related to competition and practice directly associated with competition. Training expenses may only be provided by the U.S. Olympic Committee (USOC), appropriate national governing body (or international equivalent organization for international students) or a governmental entity.	Yes.
Receive prize money?	<p>Tennis: Yes, if it does not exceed \$10,000 per calendar year and comes from the sponsor of the event. Once the \$10,000 limit is reached, additional prize money may not exceed actual and necessary expenses for each subsequent event in the calendar year.</p> <p>All other sports: Yes, if it does not exceed actual and necessary expenses for a calendar year and comes from the sponsor of the event.</p>	<p>Precollegiate enrollment - Yes.</p> <p>Precollegiate enrollment - Yes.</p>
Enter into an agreement (verbal or written) with an agent?	<p>Baseball and men's ice hockey: Yes, provided it is prior to collegiate enrollment AND the individual has already been drafted. The agent may then negotiate with the professional team, provided the individual is not awarded any benefits, pays the going rate for the representation and the agreement is discontinued before enrolling in college.</p> <p>All other sports: No.</p>	No.
Receive benefits from an agent?	No.	No.
Try out with a professional team?	<p>Men's ice hockey and skiing: Yes. May receive actual and necessary expenses for one tryout (up to 48 hours) from each professional team. Self-financed tryouts may exceed 48 hours.</p> <p>All other sports: Yes. May not exceed actual and necessary expenses.</p>	<p>Precollegiate enrollment - Yes.</p> <p>Precollegiate enrollment - Yes.</p>
Be selected in a professional draft?	Yes. Please contact the NCAA or your school's compliance office before entering an opt-in draft.	Yes. Please contact the NCAA or your school's compliance office before entering an opt-in draft.

*A college-bound student-athlete's grace period is the period between their expected date of high school graduation and initial full-time collegiate enrollment.

**Competition must be sanctioned by the U.S. Ski and Snowboard Association or its international counterparts.



“

As a foreigner, coming to the United States to be a student-athlete at the NCAA was by far the best decision I have ever made. I am extremely thankful for the opportunity to continue my studies at a higher education institution while developing my athletic abilities.

Gabriel Boscardin Dias
Men's Tennis, Winthrop University

”

INTERNATIONAL STUDENTS

An international student is one who has taken coursework outside the United States (not including DoDDS or American schools abroad) from school years nine and up. As an international student, you must submit the following information:

- Transcripts for years nine and up in the native language.
- Proof of graduation in the native language, which may include certificates, diplomas and/or final leaving exams.
- Certified line-by-line English translations of these documents if they are issued in a language other than English.

For specific details about the documents you must submit, please refer to the current **Guide to International Academic Standards for Athletics Eligibility** or visit the International Student-Athletes page at [ncaa.org/international](https://www.ncaa.org/international).

In certain situations, the NCAA Eligibility Center may request additional documentation to clarify that your academic information is complete, valid and accurate. The task list within your Eligibility Center account is used to communicate these requests, so be sure to check your email frequently for task notifications.

- For information on how to submit documentation, please visit [ncaa.org/international](https://www.ncaa.org/international).
- All documents submitted to the NCAA Eligibility Center become the property of the NCAA Eligibility Center and cannot be returned. This includes any mailed original documents.

In addition to your academic credentials, students also must submit all SAT or ACT scores. Your scores must be sent electronically to the NCAA Eligibility Center by the testing agency. When registering for the SAT or ACT, use code 9999 to ensure your test scores are sent directly to your Eligibility Center account.

Failure to include any of these items will delay the review of your records, so be sure to understand the documents required for the country in which you attended school by reviewing the current **Guide to International Academic Standards for Athletics Eligibility**, available for download at [ncaapublications.com](https://www.ncaapublications.com), or visit your country's specific information page at [ncaa.org/student-athletes/future/africa](https://www.ncaa.org/student-athletes/future/africa).

Need help? For specific questions that you can't find the answer to in our other resources, use our **International Contact Form**, found at [ncaa.org/contactinternational](https://www.ncaa.org/contactinternational).

HOME SCHOOL STUDENTS

Learning at home is not necessarily the same as being home schooled. Because of recent growth in online and virtual education, a student may be able to learn at home through an online school with online teachers, which would not be considered a parent-directed tutor.

Courses evaluated as home school courses are those in which a parent or parent-directed tutor:

- Plans and delivers actual instructional activities such as lectures, discussions, tutorials, feedback or assistance.
- Determines the student's comprehension of the material by grading and evaluating student performance and achievement on assignments and assessments and providing appropriate re-teaching and feedback.

- Determines the overall grade the student achieved in the course.
- Places the grade on a transcript or grade report or reports the grade to an approved home school umbrella program.

How to Register

If you are a home school student and want to play NCAA sports at a Division I or II school, you need to register with the NCAA Eligibility Center and meet the same standards as all other students.

Once you have completed your registration, visit ncaa.org/student-athlete/future/home-school-students and download the Home School Toolkit. This resource provides you with all of the necessary **home school resources**.



EDUCATION-IMPACTING DISABILITIES

For academic eligibility purposes, the NCAA defines an education-impacting disability as a current impairment that has a substantial educational impact on a student's academic performance and requires accommodation.

Some of the most common EIDs include:

- Learning disabilities.
- Attention-deficit/hyperactivity disorder.
- Mental health disorders.
- Medical conditions.
- Deaf or hard of hearing.
- Autism spectrum disorder.

If you have a documented EID, you must meet the same initial-eligibility standards as other students but may be provided certain accommodations to help meet those standards. For instance, if you have a documented EID, you may be allowed to take classes designed for students with EIDs if the classes appear on your school's list of NCAA-approved courses.

Submitting Your EID Documentation

If you are a student with a documented EID, you only need to alert the NCAA Eligibility Center about your disability if you plan to enroll full time at a Division I or II school and would like to take additional core courses after you graduate high school.

If your EID documentation is approved by the NCAA Eligibility Center and you plan to attend a **Division I** school:

- You may take up to three additional core courses after graduating high school but before enrolling full time at a Division I school — as long as you graduate from high school in eight consecutive semesters after starting ninth grade.

If your EID documentation is approved by the NCAA Eligibility Center and you plan to attend a **Division II** school:

- You may take an unlimited number of core courses after starting ninth grade but before enrolling full time at a Division II school.

Information submitted to the NCAA about your EID is **not** released to colleges unless the student-athlete makes a specific written request.

To document your EID with the NCAA Eligibility Center, you must submit the following materials:

1. A complete NCAA EID cover sheet.
2. Your NCAA identification number, high school graduation year, permanent address and phone number.

3. Current, signed documentation of your diagnosis (including test data) and/or recommendations from the treating professional (e.g., medical doctor, clinical psychologist or other qualified individual).
4. Current copy of your Individualized Education Program (IEP) or Section 504 Plan. If your high school did not provide an IEP or 504 Plan, the high school must submit documentation describing the available accommodations or an explanation of why accommodations were not provided.
5. A signed Buckley Statement form allowing certain individuals to review your EID information and speak on your behalf to the NCAA. A parent or guardian who would like to discuss your EID request with the NCAA must be listed on the Buckley Statement.

The cover sheet and Buckley Statement can be found at ncaa.org/student-athletes/future/education-impacting-disabilities.

Where to Send Your EID Documents

**NCAA Eligibility Center
EID Services
P.O. Box 7110
Indianapolis, IN 46207-7110**

Fax: 317-968-5100

Email: ec-processing@ncaa.org

If approved, you will be notified in writing and provided with additional information about available accommodations.

SAT/ACT Exam with Accommodations

If you have a documented EID, you may also request to take an SAT or ACT exam with accommodations to satisfy test-score requirements by:

- Registering for accommodations using the directions provided by the SAT or ACT.
- Following procedures governed by SAT or ACT. The test may not be administered by a member of your high school athletics department or any NCAA school's athletics department.

If you take an SAT or ACT exam with accommodations, you may take the test on a date other than a national testing date, but you still must achieve the required test score.

Your high school counselor can help you register to take an SAT or ACT exam with accommodations.

IMPORTANT RECRUITING TERMS

Celebratory standardized signing form (a form used by Division III institutions): This form is a standard NCAA-provided, nonbinding athletics celebratory signing form after a college-bound student-athlete has been accepted for enrollment at a Division III school.

Contact: A contact happens any time a college coach says more than “Hello” during a face-to-face meeting with you or your parents off the college’s campus.

Contact period: During a contact period, a college coach may have face-to-face contact with you or your parents, watch you compete, visit your high school and call or write to you or your parents.

Dead period: A college coach may not have any face-to-face contact with you or your parents on or off the college campus at any time during a dead period. The coach may call or write you or your parents during this time.

Evaluation: An evaluation happens when a college coach observes you practicing or competing.

Evaluation period: During an evaluation period, a college coach may watch you compete, visit your high school and call or write to you or your parents. However, a college coach may not have face-to-face contact with you or your parents off the college’s campus during an evaluation period.

Financial aid (scholarship): Any money you receive from a college or another source, such as outside loans or grants. Financial aid may be based on athletics ability, financial need, scholarships or academic achievement.

Five-year clock: If you play at a Division I school, you have five calendar years in which to play four seasons of competition. Your five-year clock starts when you enroll as a full-time student at any college. Thereafter, your clock continues, even if you spend an academic year in residence as a result of transferring, decide to redshirt, do not attend school or attend school part time during your college career.

Full-time student: Each school determines what full-time status means. Typically, you are a full-time student if you are enrolled for at least 12 credit hours in a term, but some schools define a full-time student as someone who takes fewer than 12 credit hours in a term.

Institutional request list: An institutional request list (IRL) is a list of college-bound student-athletes who an NCAA Division I and/or II school is interested in recruiting. The action of adding a college-bound student-athlete to the IRL informs the NCAA Eligibility Center of the school’s interest in having an academic and amateurism certification decision for the student-athlete.

International student: An international student is any student who is enrolled in a secondary school outside the United States, U.S. territories or Canada (except Quebec).

Official commitment: When you officially commit to attend a Division I or II college, you sign a **National Letter of Intent**, agreeing to attend that school for one academic year.

Official visit: During an official visit, the college can pay for transportation to and from the college for you (and up to two family members in Division I Basketball and FBS Football), lodging and meals (Division I allows for up to three meals per day) for you and up to four family members, as well as reasonable entertainment expenses, including five tickets to a Division I or Division II home sports event. Before a Division I or II college may invite you on an official visit, you will have to provide the college with a copy of your high school transcript and register for a Certification account with the **NCAA Eligibility Center**. In Division I, it is not permissible to make an official visit during a recruiting shutdown period or a dead period.

Quiet period: During this time, a college coach may not have any in-person contact with you or your parents off the college’s campus. A coach may not watch you play or visit your high school during this period. You and your parents may visit a college campus during this time. A coach may call or write to you or your parents during this time.

Recruited: If a college coach contacts you off campus, pays your expenses to visit the campus, or (in Divisions I and II) issues you a National Letter of Intent or a written offer of financial aid, you are considered recruited.

Recruiting calendar: NCAA member schools limit recruiting to certain periods during the year. Recruiting calendars promote the well-being of college-bound student-athletes and ensure fairness among schools by defining certain periods during the year in which recruiting may or may not occur in a particular sport.

Recruiting shutdown: A recruiting shutdown is a period of time when no forms of recruiting (e.g., contacts, evaluations, official or Division I unofficial visits, correspondence, or making or receiving telephone calls) are permissible.

Season of competition: Generally, NCAA rules say any competition in a season — regardless of the amount of time — counts as having played one season in that sport. If you play any time during a season, regardless of how long you played, it counts as having played for an entire season in that sport. A season starts when you spend one second in competition on the field, court, gym or track. In Division III, you also use a season if you practice at any time after the first contest.

Ten-semester/15-quarter clock: If you play at a Division II or III school, you have the first 10 semesters or 15 quarters in which you are enrolled as a full-time student to complete your four seasons of competition. You use a semester or quarter any time you attend class as a full-time student or are enrolled part time and compete for the school. You do not use a term if you only attend part time with no competition or are not enrolled for a term.

Two-year college: Any school from which students can earn an Associate of Arts, Associate of Science or Associate of Applied Science within two years. Some people call these schools community or junior colleges.

Unofficial visit: Any visit by you and your parents to a college campus paid for by you or your parents. The only expense you may receive from the college is three complimentary admissions to a Division I home athletics contest or five complimentary admissions to a Division II home athletics contest. You may make as many unofficial visits as you like after the first permissible date in each sport. The only time you cannot talk with a coach during an unofficial visit is during a dead period. In Division I, it is not permissible to make an official visit during a recruiting shutdown period or a dead period. In Division III, you may receive one on-campus meal as well as admission to a home athletics event for you and those accompanying you.

Verbal commitment: A verbal commitment happens when you verbally agree to play sports for a college before you sign or are eligible to sign a National Letter of Intent. The commitment is not binding on you or the school.

Walk-on: Someone who is not typically recruited by a school to participate in sports and does not receive a scholarship from the school, but who becomes a member of one of the school’s athletics teams.

RECRUITING CALENDARS

NCAA member schools limit recruiting to certain periods during the year. Recruiting calendars promote the well-being of college-bound student-athletes and ensure fairness among schools by defining certain periods during the year in which recruiting may or may not occur in a particular sport. Due to the COVID-19 pandemic, recruiting calendars may be adjusted. For the most up-to-date information, visit [ncaa.org/student-athletes/resources/recruiting-calendars](https://www.ncaa.org/student-athletes/resources/recruiting-calendars).

Men's Basketball, Division I

Recruiting Method	
Recruiting Materials and Electronic Correspondence (e.g., recruiting letters, social media messages, text messages)	<p>You may receive brochures for camps, questionnaires, NCAA materials and nonathletics recruiting publications at any time.</p> <p>A coach may begin sending you recruiting materials and electronic correspondence June 15 between your sophomore and junior year in high school.</p>
Phone Calls to a Coach	You or your family may call a coach at any time.
Phone Calls from a Coach	A coach may call you or your family beginning June 15 between your sophomore and junior year in high school.
Off-campus Contact	A college coach may have contact with you or your family off the college's campus beginning the first day of your junior year in high school. Contacts made in your junior year may occur at your educational institution except for during the April recruiting periods, when off-campus recruiting contacts may be made at your educational institution or residence.
Unofficial Visit	You and your family may visit a college at your own expense beginning Aug. 1 of your sophomore year in high school.
Official Visit	A college may pay for you and two family members to visit the college beginning Aug. 1 of your junior year in high school. Up to five official visits can be taken between Aug. 1 of your junior year and the completion of your junior year. An additional five official visits may be taken between the day following completion of your junior year and Oct. 15 following completion of high school.

Women's Basketball, Division I

Recruiting Method	
Recruiting Materials and Electronic Correspondence (e.g., recruiting letters, social media messages, text messages)	<p>You may receive brochures for camps, questionnaires, NCAA materials and nonathletics recruiting publications at any time.</p> <p>A coach may begin sending you recruiting materials and electronic correspondence Sept. 1 of your junior year in high school.</p>
Phone Calls to a Coach	You or your family may call a coach at any time.
Phone Calls from a Coach	A coach may call you or your family beginning Sept. 1 of your junior year in high school.
Off-campus Contact	A college coach may have contact with you or your family off the college's campus beginning March 1 of your junior year in high school. Contacts made during your junior year may occur at your educational institution or residence.
Unofficial Visit	You and your family may visit a college at your own expense at any time.
Official Visit	A college may pay for you and two family members to visit the college beginning the Thursday following the final game of the Women's Final Four during your junior year in high school.

Football, Division I

Recruiting Method	
Recruiting Materials and Electronic Correspondence (e.g., recruiting letters, social media messages, text messages)	<p>You may receive brochures for camps, questionnaires, NCAA materials and nonathletics recruiting publications at any time.</p> <p>A coach may begin sending you recruiting materials and electronic correspondence Sept. 1 of your junior year in high school.</p>
Phone Calls to a Coach	You or your family may call a coach at any time.
Phone Calls from a Coach	A coach may call you one time between April 15 and May 31 during your junior year of high school. Beginning Sept. 1 of your senior year of high school, a coach may call you one time per week outside a contact period and make unlimited calls during a contact period.
Off-campus Contact	A college coach may have contact with you or your family off the college's campus beginning July 1 following the completion of your junior year of high school or opening day of classes of your senior year (whichever comes first).
Unofficial Visit	You and your family may visit a college at your own expense at any time.
Official Visit	A college may pay for you and two family members to visit campus beginning April 1 of your junior year through the Sunday before the last Wednesday in June. After this date, a college may provide you the expense-paid visit after Sept. 1 of your senior year.

Men's Ice Hockey, Division I

Recruiting Method	
Recruiting Materials and Electronic Correspondence (e.g., recruiting letters, social media messages, text messages)	<p>You may receive brochures for camps, questionnaires, NCAA materials and nonathletics recruiting publications at any time.</p> <p>A coach may begin sending you recruiting materials and electronic correspondence Jan. 1 of your sophomore year in high school.</p>
Phone Calls to a Coach	You or your family may call a coach beginning Jan. 1 of your sophomore year in high school.
Phone Calls from a Coach	A coach may call you or your family beginning Jan. 1 of your sophomore year in high school.
Off-campus Contact	A college coach may have contact with you or your family off the college's campus beginning Aug. 1 of your junior year in high school.
Unofficial Visit	You and your family may visit a college at your own expense beginning Jan. 1 of your sophomore year in high school.
Official Visit	A college may pay for you to visit the college beginning Aug. 1 of your junior year in high school.

Lacrosse and Softball, Division I

Recruiting Method	
Recruiting Materials and Electronic Correspondence (e.g., recruiting letters, social media messages, text messages)	<p>You may receive brochures for camps, questionnaires, NCAA materials and nonathletics recruiting publications at any time.</p> <p>A coach may begin sending you recruiting materials and electronic correspondence Sept. 1 of your junior year in high school.</p>
Phone Calls to a Coach	You or your family may call a coach beginning Sept. 1 of your junior year in high school.
Phone Calls from a Coach	A coach may call you or your family beginning Sept. 1 of your junior year in high school.
Off-campus Contact	A college coach may have contact with you or your family off the college's campus beginning Sept. 1 of your junior year in high school. Contacts made during your junior year may occur at your educational institution or residence.
Unofficial Visit	You and your family may visit a college at your own expense beginning Sept. 1 of your junior year in high school.
Official Visit	A college may pay for you to visit the college beginning Sept. 1 of your junior year in high school.

Baseball, Division I

Recruiting Method	
Recruiting Materials and Electronic Correspondence (e.g., recruiting letters, social media messages, text messages)	You may receive brochures for camps, questionnaires, NCAA materials and nonathletics recruiting publications at any time. A coach may begin sending you recruiting materials and electronic correspondence Sept. 1 of your junior year in high school.
Phone Calls to a Coach	You or your family may call a coach at any time.
Phone Calls from a Coach	A coach may call you or your family beginning Sept. 1 of your junior year in high school.
Off-campus Contact	A college coach may have contact with you or your family off the college's campus immediately following July 1, following the completion of your junior year of high school or opening day of classes of your senior year (whichever is earlier).
Unofficial Visit	You and your family may visit a college at your own expense beginning Sept. 1 of your junior year in high school.
Official Visit	A college may pay for you to visit the college beginning Sept. 1 of your junior year in high school.

All Other Sports, Division I

Recruiting Method	
Recruiting Materials and Electronic Correspondence (e.g., recruiting letters, social media messages, text messages)	You may receive brochures for camps, questionnaires, NCAA materials and nonathletics recruiting publications at any time. A coach may begin sending you recruiting materials and electronic correspondence June 15 between your sophomore and junior year in high school.
Phone Calls to a Coach	You or your family may call a coach beginning June 15 between your sophomore and junior year in high school.
Phone Calls from a Coach	A coach may call you or your family beginning June 15 between your sophomore and junior year in high school.
Off-campus Contact	A college coach may have contact with you or your family off the college's campus beginning Aug. 1 of your junior year in high school.
Unofficial Visit	You and your family may visit a college at your own expense beginning Aug. 1 of your junior year in high school.
Official Visit	A college may pay for you to visit the college beginning Aug. 1 of your junior year in high school.



Divisions II and III

RECRUITING METHOD	DIVISION II	DIVISION III
Recruiting materials	You may receive brochures for camps, questionnaires, NCAA materials and nonathletics recruiting publications at any time. A coach may begin sending you printed recruiting materials June 15 immediately preceding your junior year in high school.	You may receive printed materials any time.
Telephone calls	No limit on number of calls by college coach beginning June 15 immediately preceding your junior year. You may make calls to the coach at your expense.	No limit on number of calls or when they can be made by the college coach. You may make calls to the coach at your expense.
Off-campus contact	A college coach may have contact with you or your parents/legal guardians off the college's campus beginning June 15 immediately preceding your junior year. No limit on number of contacts off campus.	A college coach may have contact with you or your relatives or guardians off the college's campus after your sophomore year. No limit on number of contacts off campus.
Unofficial visit	You may make an unlimited number of unofficial visits any time, except during a dead period.	You may make an unlimited number of unofficial visits any time.
Official visit	A college may pay for you to visit the college beginning June 15 immediately preceding your junior year. Between June 15 before your junior year and the end of your senior year in high school, you may make only one official visit per college and up to a maximum of five official visits to Division I colleges. There is no limit to official visits to Division II colleges.	A college may pay for you to visit the college beginning Jan. 1 of your junior year in high school. There is no limit to official visits to Division III colleges. However, you may only be provided one visit per college.



QUESTIONS TO ASK

While you are on a campus visit, consider asking questions about these topics to learn more about the school, athletics program and life on campus. You also can get suggestions of questions to ask coaches and administrators at ncaa.org/student-athletes/future/choosing-college.

- Academic resources.
- Scholarship renewals.
- Financial aid and cost of attendance.
- Admissions requirements.
- Study abroad/internships.
- Athletic training and medical expenses.
- Degree programs and graduation rates.
- Team time demands.
- On-campus housing.
- Coaching philosophy and style.
- Injuries and rehabilitation.
- Graduation rates.
- Schedule planning and time management.
- Playing time.
- Mental health resources.

REMEMBER



In addition to receiving your academic and amateurism certification from the NCAA Eligibility Center, you also must apply and be accepted to your DI or DII college before you can compete on campus.



PLAY COLLEGE SPORTS

Want to play college sports?
Learn what it takes to reach the top of your game at

ncaa.org/playcollegesports



CREATING **A PATHWAY TO OPPORTUNITY** FOR NEARLY
HALF A MILLION STUDENT-ATHLETES
IN 24 SPORTS AT 1,100 SCHOOLS.