

PLEASE KEEP ILL STUDENTS OUT OF SCHOOL

The list below gives school instructions not medical advice.
Please contact your health care provider with health concerns.



SYMPTOMS OF ILLNESS



THE STUDENT MAY RETURN AFTER...

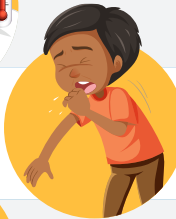
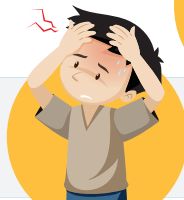
(The list below indicates the shortest time to stay home.
A student may need to stay home longer for some illnesses.)

Fever: temperature of 100.4°F or greater



Fever-free for 24 hours without taking fever-reducing medicine.

New **cough** illness **OR** new **difficulty breathing**



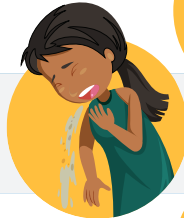
Symptoms improving for 24 hours (no cough or cough is well controlled and breathing comfortably). Urgent medical care may be needed.

Headache with stiff neck or with fever



Symptom-free **OR** with orders from doctor to school nurse. Follow fever instructions if fever is present. Urgent medical care may be needed.

Diarrhea: 3 loose or watery stools in a day or unable to control bowel movements



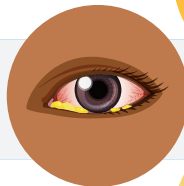
Symptom-free for 48 hours **OR** with orders from doctor to school nurse.

Vomiting: one or more episodes that are unexplained



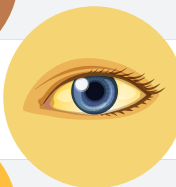
Symptom-free for 48 hours **OR** with orders from doctor to school nurse.

Skin rash or **open sores**



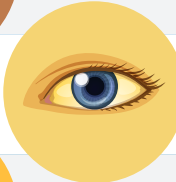
Symptom-free, which means rash is gone or sores are dry or can be completely covered by a bandage **OR** with orders from doctor to school nurse.

Red eyes with eye discharge: yellow or brown drainage from the eyes



Symptom-free, which means redness and discharge are gone **OR** with orders from doctor to school nurse.

Jaundice: new yellow color in eyes or skin



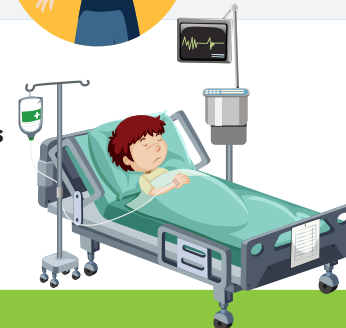
After the school has orders from doctor or local health authority to school nurse.

Acting differently without a reason: unusually sleepy, grumpy or confused



Symptom-free, which means return to normal behavior **OR** with orders from doctor to school nurse.

Major health event, like an illness lasting 2 or more weeks **OR** a hospital stay **OR** health condition requires more care than school staff can safely provide



After the school has orders from doctor to school nurse **AND** after measures are in place for student's safety. Please work with the school staff to address special health care needs so the student may attend safely.