



# 2022-23 Revised Budget

Prepared by the District 191 Business Office  
200 W. Burnsville Pkwy.  
Burnsville, MN 55337  
952-707-2010



**Agenda IV. B.2.  
February 09, 2023**

**TO:** Members, Board of Education  
Dr. Theresa Battle, Superintendent

**FROM:** Stacey Sovine - Executive Director of Administrative Services

**DATE:** February 02, 2023

**RE:** Approve 2022-23 Revised Budget

**RECOMMENDATION:** That the Board of Education approves the 2022-23 Revised Budget providing all funds' revenues of \$183,913,084 and all funds' expenditures of \$185,621,470.

**ISD 191 BURNSVILLE - EAGAN - SAVAGE  
2022-2023 REVISED BUDGET  
CHANGES IN FUND BALANCE**

FUND	REVENUE BUDGET	EXPENDITURE BUDGET	INCR (DECR) TO FUND BALANCE
GENERAL	\$ 137,755,710	\$ 137,803,486	\$ (47,776)
FOOD SERVICE	5,792,542	5,298,849	493,693
COMMUNITY SERVICE	6,414,832	6,039,135	375,697
CAPITAL PROJECTS	-	-	-
DEBT SERVICE	10,780,000	11,360,000	(580,000)
INTERNAL SERVICE FUND	23,170,000	25,120,000	(1,950,000)
TOTAL ALL FUNDS	<u>\$ 183,913,084</u>	<u>\$ 185,621,470</u>	<u>\$ (1,708,386)</u>

Each fiscal year the budget is revised to reflect the most current information available with respect to revenues and expenditures. This recommendation formally recognizes these amendments to the revisions by incorporating them into the budget document. Revisions have been made in all governmental funds.

I recommend approval of the 2022-23 Revised Budget.

# **Fiscal Year 2023 Revised Budget**

---

**Stacey Sovine - Executive Director  
of Administrative Services**

**Prepared by Tyler Dehne -  
Director of Finance**

**February 9, 2023**



# Overview

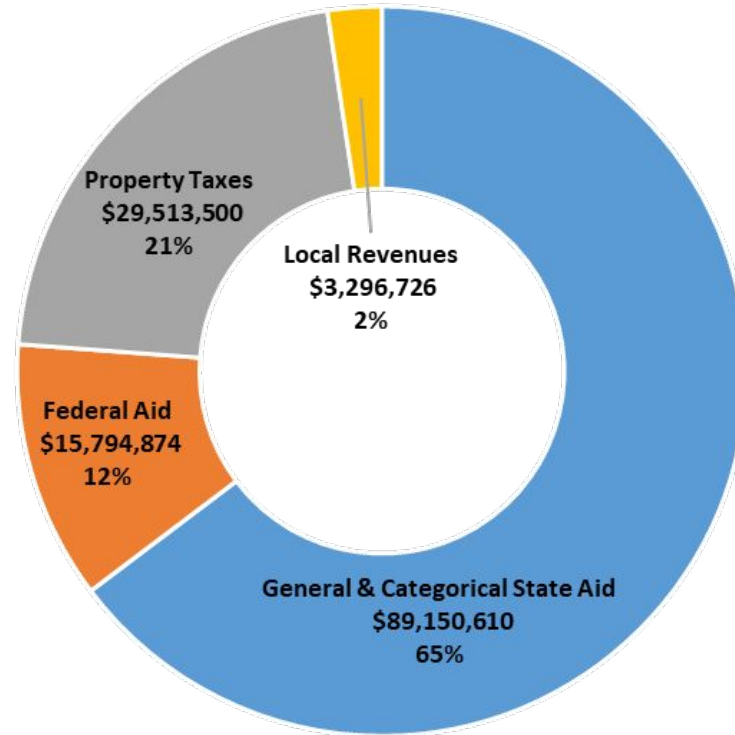
- Provide the Board and Community with updated finance information.
- Recommendation to the Board for approval of Fiscal Year (FY) 2023 Revised Budget.

# Agenda

- Where does district funding come from?
- What restrictions are there on district spending?
- How does the district spend its money?
- What's the current situation?

# Revenue: Where does it come from?

General Fund Revenue:  
\$137,755,710



# What restrictions are there?

- **General Fund Capital:** Annual allocation that can only be used for approved personnel and equipment per state statute.
- **Title Funds:** Federal money designated for specific purposes such as needs associated with high poverty rates.
- **Technology Levy:** Specifically for technology, personnel and equipment.
- **Community Education - Food & Nutrition Services**

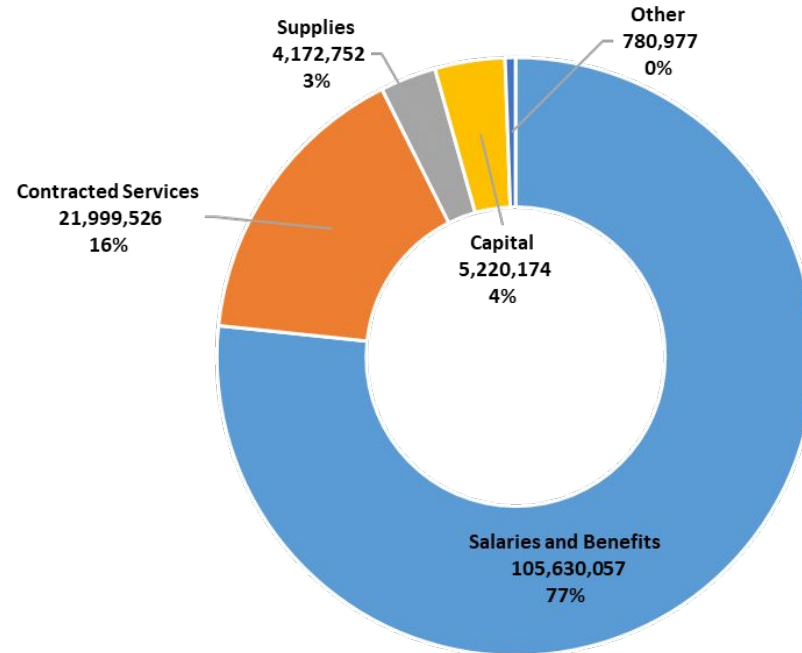
# General Fund Expenditures by UFARS

## Object Dimension

(Type of Expense)

- 77% on people
- 23% on supplies, facilities, contracted services, etc.

**\$137,803,486**





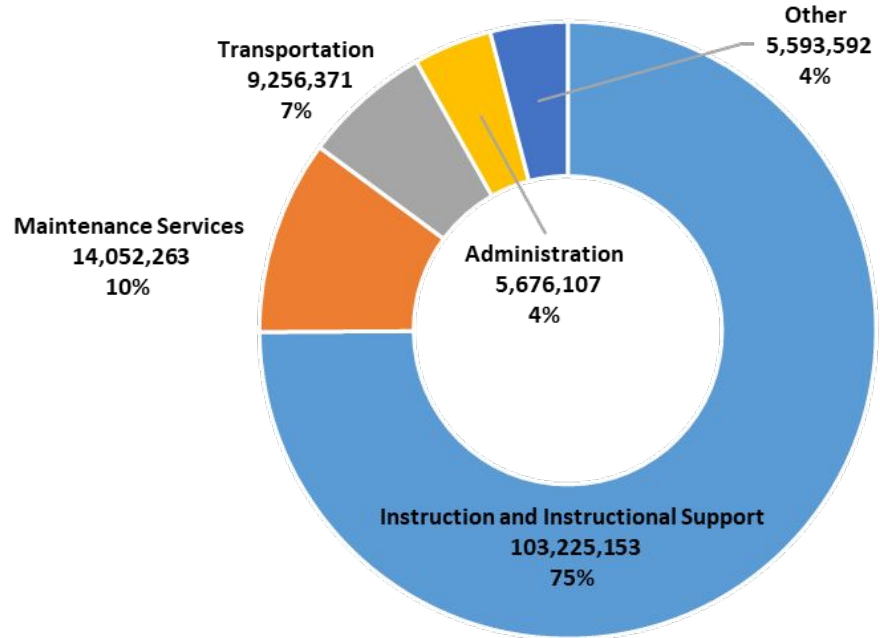
# General Fund Expenditures by UFARS

## Program Dimension

(By Purpose)

- 75% on instruction & instructional support
- 4% on administration

**\$137,803,486**

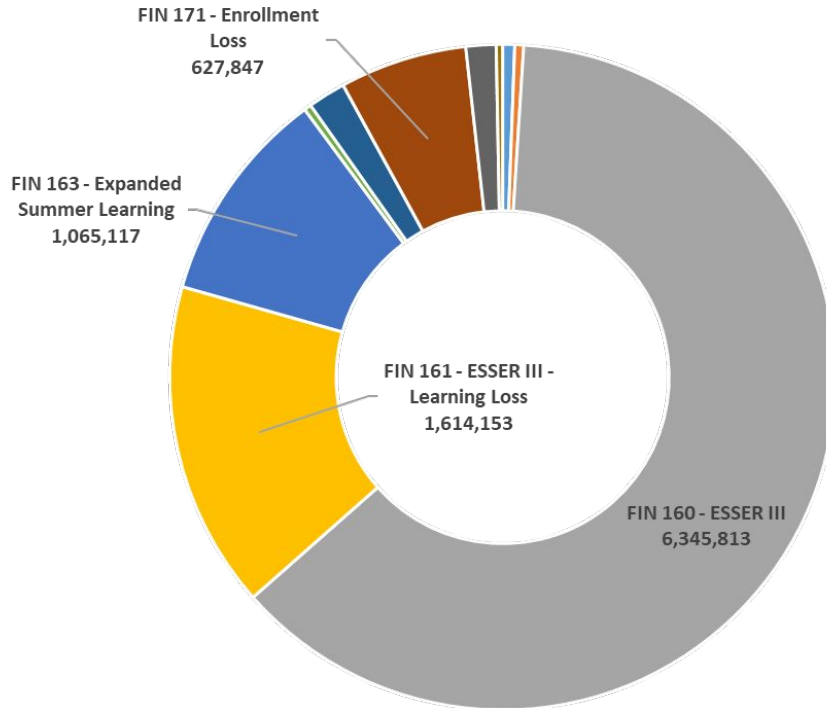


# People: By Bargaining Group General Fund

General Fund Bargaining Group	Sum of FTE (Full-Time Equivalent)	Sum of Salary	Sum of Benefits	Total Salary + Benefits	% of Total
Clerical	43.00	\$ 2,133,901	\$ 904,944	\$ 3,038,845	3.04%
Confidential	5.00	\$ 410,904	\$ 171,259	\$ 582,163	0.58%
Custodial	70.33	\$ 3,755,125	\$ 1,467,199	\$ 5,222,324	5.22%
District Wide	8.85	\$ 1,152,581	\$ 373,751	\$ 1,526,332	1.53%
Educational Asst	168.01	\$ 4,837,695	\$ 2,946,173	\$ 7,783,868	7.78%
Info Tech Specialists	13.00	\$ 785,934	\$ 351,642	\$ 1,137,576	1.14%
Operations	4.00	\$ 264,823	\$ 103,687	\$ 368,510	0.37%
Principals	18.00	\$ 2,582,921	\$ 908,063	\$ 3,490,984	3.49%
Superintendent	1.00	\$ 201,800	\$ 63,182	\$ 264,982	0.26%
Teachers	612.33	\$ 48,683,782	\$ 20,831,637	\$ 69,515,419	69.50%
Unaffiliated	59.03	\$ 3,962,110	\$ 1,701,457	\$ 5,663,567	5.66%
VPK / CE	23.19	\$ 1,061,041	\$ 364,979	\$ 1,426,020	1.43%
<b>Grand Total</b>	<b>1,025.74</b>	<b>\$ 69,832,617</b>	<b>\$ 30,187,973</b>	<b>\$ 100,020,590</b>	<b>100%</b>

[Burnsville-Eagan-Savage District #191 Bargaining Unit Descriptions](#)

# Federal Pandemic Relief Funds Included



**\$10,156,909**

# 2022-2023 Revised Budget - All Funds

FUND	AUDITED FUND BALANCE 6/30/22	REVENUE BUDGET	EXPENDITURE BUDGET	PROJECTED FUND BALANCE 6/30/23
GENERAL	\$ 32,521,898	\$ 137,755,710	\$ 137,803,486	\$ 32,474,122
FOOD SERVICE	2,511,461	5,792,542	5,298,849	3,005,154
COMMUNITY SERVICE	3,195,512	6,414,832	6,039,135	3,571,209
CAPITAL PROJECTS	-	-	-	-
DEBT SERVICE	5,791,892	10,780,000	11,360,000	5,211,892
INTERNAL SERVICE FUND	20,900,990	23,170,000	25,120,000	18,950,990
TOTAL ALL FUNDS	\$ 64,921,753	\$ 183,913,084	\$ 185,621,470	\$ 63,213,367

# Current Reality

## General Fund Budget Comparative Summary

	Actual Results 2020-21	Actual Results 2021-22	Adopted Budget 2022-23	Revised Budget 2022-23
Total Beginning Fund Balance	\$ 20,326,027	\$ 29,521,880	\$ 29,371,898	\$ 32,521,899
Revenues	129,973,192	126,974,994	125,658,061	127,778,817
Federal Relief Revenues for current costs	4,673,195	3,902,488	3,400,000	4,027,847
Federal Relief Revenues for new costs		5,443,165	6,270,499	5,949,046
Expenditures	120,777,339	127,877,463	130,869,041	131,854,440
Federal Relief Expenditures for new costs	4,673,195	5,443,165	6,270,499	5,949,046
Variance (Revenues - Expenditures)	9,195,853	3,000,019	(1,810,980)	(47,776)
Total Ending Fund Balance	\$ 29,521,880	\$ 32,521,899	\$ 27,560,918	\$ 32,474,123
Breakdown of Fund Balance Categories				
Nonspendable	\$ 382,338	\$ 254,436	\$ 382,338	\$ 254,436
Restricted	9,020,782	9,841,889	8,637,897	10,819,678
Committed	1,849,491	1,837,017	1,168,634	1,394,580
Assigned	5,081,823	1,810,980	-	-
Unassigned	13,187,446	18,777,577	17,372,049	20,005,429
Total Ending Fund Balance	\$ 29,521,880	\$ 32,521,899	\$ 27,560,918	\$ 32,474,123
Unassigned Fund Balance %	10.51%	14.08%	12.67%	14.52%

# Other Resources

- [FY23 Revised Budget - Budget Unit Summary Report with comparison column to Adopted Budget](#)
- [FY23 Revised Budget - Staffing by Budget Unit](#)

# Next Steps

- Recommendation to approve the FY 2023 Budget Revision, as presented.
- Begin building FY 2024 Budget with approved Revision and assumptions.

# Budget Revision

**Thank You.**



## 2023 Revised Budget by Budget Unit

(Staffing and budgeted Full-time Equivalent (FTE) as of January 03, 2023)

		Adopted Budget	Payroll Expenses	Non-Payroll Expenses	Revised Budget	+ / -	Revised FTE's
<b>01010</b>	<b>General Elementary Instruction Personnel</b>	16,838,597	16,146,238	0	16,146,238	(692,359)	152.00
Provides the funding necessary to provide instruction in the core academic subjects of language arts, math, and social studies at the district's eight elementary schools.							
<b>01030</b>	<b>General Elementary Instruction Subs</b>	475,000	0	625,000	625,000	150,000	0.00
Provides the funding necessary for elementary substitutes.							
<b>02010</b>	<b>General Middle School Instruction Personnel</b>	4,969,893	4,749,868	0	4,749,868	(220,025)	42.01
Provides the funding necessary to offer courses in the core academic subjects of language arts, math, science, social studies, and world language at the district's three middle schools.							
<b>02020</b>	<b>General Middle School Instruction Subs</b>	201,500	60,000	200,000	260,000	58,500	0.00
Provides the funding necessary for middle school substitutes.							
<b>03010</b>	<b>General High School Instruction Personnel</b>	6,618,113	6,327,362	0	6,327,362	(290,751)	51.62
Provides the funding necessary to offer courses in the core academic subjects of language arts, math, science, social studies, and world language at the district's high school.							
<b>03020</b>	<b>General High School Instruction Subs</b>	150,900	80,000	150,000	230,000	79,100	0.00
Provides the funding necessary for high school substitutes.							

<div>2023 Revised Budget by Budget Unit</div> <div>(Staffing and budgeted Full-time Equivalent (FTE) as of January 03, 2023)</div>							
		Adopted Budget	Payroll Expenses	Non-Payroll Expenses	Revised Budget	+ / -	Revised FTE's
04010	PhyEd, Health, Art, Music Personnel	4,761,871	4,860,883	0	4,860,883	99,012	44.41
Provides the funding to provide K-12 physical education, 6-12 health, K-12 visual arts, K-12 general/vocal music, and 6-12 Instructional music instruction.							
05010	Long Term Subs	144,200	144,200	0	144,200	-	0.00
Provides the funding necessary for payment of Long Term Subs K-12.							
06000	Health Care Teacher	93,909	93,943	0	93,943	34	1.00
Provides the funding to operate the instructional program of health care.							
06010	Family and Consumer Science Instruction	719,716	646,545	0	646,545	(73,171)	6.13
Provides the funding to operate the instructional program of family and consumer science.							
06020	Trade and Industrial Education	461,304	513,453	0	513,453	52,149	4.02
Provides the funding to operate the instructional program of trade and industrial education.							
06030	Career and Tech General Education	116,571	116,580	0	116,580	9	0.90
Provides the funding for general career and tech education in a variety of career objectives.							
06040	Business and Office Education	419,982	383,909	0	383,909	(36,073)	3.72
Provides the funding to operate the instructional program of business and office education.							
06050	Partnerships	200,216	201,499	3,501	205,000	4,784	1.00
Provides the funding for Strategic Partnerships and Pathways and related efforts in connecting our students with community opportunities.							
06060	PostSecondary Tuition Career Tech	530,450	0	575,000	575,000	44,550	0.00
Provides the budget for secondary students to attend Career & Technical classes.							

## 2023 Revised Budget by Budget Unit

(Staffing and budgeted Full-time Equivalent (FTE) as of January 03, 2023)

		Adopted Budget	Payroll Expenses	Non-Payroll Expenses	Revised Budget	+ / -	Revised FTE's
<b>06070</b>	<b>PostSecondary CIS PSEO</b>	745,720	0	615,000	615,000	(130,720)	0.00
Provides the budget for secondary students to attend classes through the District's various University and College programs including college in the schools (CIS) and post-secondary enrollment options (PSEO).							
<b>07010</b>	<b>K12 Media Services</b>	750,135	749,545	0	749,545	(590)	7.75
Provides the funding to provide K-12 media services- media specialists and media educational assistants.							
<b>07020</b>	<b>K12 Gifted and Talented</b>	95,840	95,840	0	95,840	-	1.00
Provides the funding to provide for a gifted and talented instructor at each elementary school.							
<b>07030</b>	<b>612 Guidance Services</b>	1,081,025	1,106,109	0	1,106,109	25,084	11.60
Provides the funding to provide 6-12 guidance services.							
<b>07040</b>	<b>912 Deans</b>	735,610	591,117	0	591,117	(144,493)	7.00
Provides the funding to provide 6-12 Dean support.							
<b>07060</b>	<b>English Second Language Learner</b>	4,809,111	4,348,509	70,000	4,418,509	(390,602)	42.00
Provides funding for the district's K-12 English Second Language Learner program and includes salaries, benefits, and other instructional expenses.							
<b>08010</b>	<b>Site Allocation of Instructional/Operational Resources</b>	461,702	3,744	564,569	568,313	106,611	0.00
Provides the per pupil funding allocation for instructional and operational related expenses. This funding is intended to cover the costs of building level equipment repairs, purchase of general supplies, classroom supplies, telephone, etc.							

## 2023 Revised Budget by Budget Unit

(Staffing and budgeted Full-time Equivalent (FTE) as of January 03, 2023)

		Adopted Budget	Payroll Expenses	Non-Payroll Expenses	Revised Budget	+ / -	Revised FTE's
<b>08020</b>	<b>Building Level Copier Leases</b>	65,000	0	65,000	65,000	-	0.00
Provides the funding for the monthly lease costs of the main multi-functional device within each school.							
<b>09010</b>	<b>Special Ed Salaries/Benefits</b>	26,163,784	25,307,017	0	25,307,017	(856,767)	301.98
Provides funding for staff costs necessary to operate the Office of Student Support Services. Most, but not all of these expenditures, are either reimbursed with state or federal special education funds or are related to general education functions.							
<b>09030</b>	<b>Special Ed Purchased Services</b>	1,864,806	0	1,974,109	1,974,109	109,303	0.00
Provides funding for Student Support Services purchased services, supplies and equipment.							
<b>09040</b>	<b>Special Ed Transportation</b>	4,448,180	0	4,524,880	4,524,880	76,700	0.00
Required transportation, purchased services, supplies and equipment for students served by Student Support Services.							
<b>10010</b>	<b>Alternative Learning Center</b>	2,324,022	2,059,687	228,945	2,288,632	(35,390)	30.74
Provides categorical funds to operate the alternative high school, school within a school, extended day and extended year programs for elementary and middle school students.							
<b>10020</b>	<b>Licensed Mental Health Services</b>	0	0	300,000	300,000	300,000	0.00
Provides categorical funding to support a financial partnership with Headway, who are able to respond to pressing mental health needs, proactively support student success, and be readily available in case of a crisis.							
<b>10030</b>	<b>K12 Nursing/Health Services</b>	1,086,361	892,289	23,100	915,389	(170,972)	9.08
Provides funding to operate the district health services department including salaries, benefits and other operating expenses for the district school health offices. Certain FTEs may also be included in Special Ed Salaries, 09010.							

<b>2023 Revised Budget by Budget Unit</b> (Staffing and budgeted Full-time Equivalent (FTE) as of January 03, 2023)							
		Adopted Budget	Payroll Expenses	Non-Payroll Expenses	Revised Budget	+ / -	Revised FTE's
<b>11010</b>	<b>Co-Curricular Activities (Non-Athletic)</b>	258,640	274,066	0	274,066	15,426	0.00
	Provides the funding to support co-curricular activities. These funds are supplemented through ticket sales, fund raising, donations, etc.						
<b>11011</b>	<b>Student Activities</b>	200,000	0	200,000	200,000	-	0.00
	Provides funding to provide Student Activities. These funds are supplemented through fundraising and donations.						
<b>11020</b>	<b>High School Interscholastic Athletics</b>	1,307,391	897,767	441,042	1,338,809	31,418	2.00
	Provides the funding to provide high school athletics. These funds are supplemented through ticket sales, fund raising, donations, etc.						
<b>11021</b>	<b>Middle School Interscholastic Athletics</b>	243,000.00	143,000.00	100,000.00	243,000.00	-	0.00
	Provides the funding to provide middle school athletics. These funds are supplemented through ticket sales, fund raising, donations, etc. This budget unit consists of salaries and benefits for no FTEs						
<b>12010</b>	<b>Title I, Part A Regular Improving Basic Programs</b>	1,985,799	2,022,197	252,313	2,274,510	288,711	25.33
	Provides funding to help ensure all children meet challenging state academic standards. Includes staffing, instructional, Supplemental Education Services and staff development expenses.						
<b>12020</b>	<b>Title II, Part A Regular Teacher/Principal Training &amp; Recruiting</b>	489,064	389,932	33,939	423,871	(65,193)	3.46
	Funding pays a portion of teacher and administrative salaries of highly qualified professionals working to improve student achievement.						
<b>12030</b>	<b>Title III Regular Limited English Proficient Students</b>	211,193	222,682	112,876	335,558	124,365	0.00
	Funding supports ESL personnel, their professional development, and for interpretation needs of our LEP families.						

<b>2023 Revised Budget by Budget Unit</b> (Staffing and budgeted Full-time Equivalent (FTE) as of January 03, 2023)							
		Adopted Budget	Payroll Expenses	Non-Payroll Expenses	Revised Budget	+ / -	Revised FTE's
<b>12040</b>	<b>Title IV Regular Limited English Proficient Students</b>	175,879	195,939	32,688	228,627	52,748	0.60
	Provides funding to provide students with a well rounded education, support safe and healthy students and support effective use of technology for personalized learning opportunities.						
<b>12050</b>	<b>Carl Perkins Grant</b>	97,248	7,863	89,385	97,248	-	0.00
	Funding pays for professional development and supplies to teachers of Family and Consumer Science, Business, and Technology Education at Burnsville High School.						
<b>13010</b>	<b>QComp/ProPay</b>	2,159,851	2,157,159	3,200	2,160,359	508	6.00
	Provides for expenditures associated with the district's Q-Comp / Pro-Pay programs including salaries and benefits, stipends, performance incentives and other operating expenses.						
<b>13020</b>	<b>Integration and Achievement</b>	2,026,817	1,937,365	93,051	2,030,416	3,599	23.37
	Provides for expenditures related to the achievement and integration program including salaries and benefits, professional development and other operating expenses.						
<b>13030</b>	<b>Compensatory Education</b>	3,862,562	4,247,221	0	4,247,221	384,659	10.97
	Provides funding for compensatory programs and initiatives to meet the educational needs of students who are under prepared or are not meeting age appropriate performance standards.						
<b>14010</b>	<b>Technology</b>	1,640,024	821,711	952,782	1,774,493	134,469	7.00
	Provides funding to manage and support the district's technologies including digital learning specialist, instructional, operational resources, equipment and supplies including the District's intranet and telephone systems.						
<b>14020</b>	<b>Technology: Capital Levy</b>	3,620,365	1,509,632	2,137,956	3,647,588	27,223	15.00
	Provides funding of technical staff, 1:1 initiative, and technical training of instructional staff.						

## 2023 Revised Budget by Budget Unit

(Staffing and budgeted Full-time Equivalent (FTE) as of January 03, 2023)

		Adopted Budget	Payroll Expenses	Non-Payroll Expenses	Revised Budget	+ / -	Revised FTE's
<b>14030</b>	<b>Technology: ERP and SIS Systems</b>	409,564	0	409,564	409,564	-	0.00
Provides funding to manage the business management software for HR/Business, Finance, Budgeting, Archival (ERP) and Student Information Systems (SIS)							
<b>15010</b>	<b>Instructional Development</b>	223,338	75,188	148,950	224,138	800	0.50
Provides the funding for district professional development (PD) to support the acquisition of district learning goals. Includes operational resources, purchased services, equipment, supplies, and building level PD allocations.							
<b>15020</b>	<b>Curriculum Development</b>	605,340	407,782	253,700	661,482	56,142	1.75
Provides the funding for the ongoing development of a comprehensive written curriculum. Also includes operational resources, purchased services, equipment and supplies.							
<b>15030</b>	<b>Curriculum Adoptions</b>	702,000	0	702,000	702,000	-	0.00
Provides the funding for the purchase of curriculum resources to support delivery of the written curriculum including textbooks, manipulatives, software and software subscriptions.							
<b>15040</b>	<b>Assessment Program</b>	156,300	0	156,300	156,300	-	0.00
Provides the funding necessary to implement required accountability assessments to monitor student progress toward achievement of academic standards through software fees, purchased services, equipment and supplies.							
<b>16010</b>	<b>Board of Education</b>	133,194	42,492	89,309	131,801	(1,393)	7.00
Provides the funding for the School Board. Includes School Board stipends, District elections, legal fees and other expenses related to Board initiatives.							
<b>16020</b>	<b>Superintendent</b>	431,193	396,814	35,400	432,214	1,021	2.00
Provides the funding to operate the office of Superintendent of Schools to support the District's mission, vision, and instructional goals.							

## 2023 Revised Budget by Budget Unit

(Staffing and budgeted Full-time Equivalent (FTE) as of January 03, 2023)

		Adopted Budget	Payroll Expenses	Non-Payroll Expenses	Revised Budget	+ / -	Revised FTE's
<b>16030</b>	<b>Assistant Superintendent</b>	306,825	257,369	41,800	299,169	(7,656)	1.50
Provides the funding to operate the office of the Assistant Superintendent of Schools to support the development, operation and evaluation of the district's elementary and secondary instructional programs.							
<b>16040</b>	<b>Human Resources</b>	738,491	620,727	173,090	793,817	55,326	5.00
Provides the funding to support operation of the Human Resources office including advertising, recruiting, hiring, staff development, legal fees, software applications, and compliance requirements.							
<b>16041</b>	<b>Workers Comp, Unemployment, &amp; Premiums for Property Casualty Liability Insurance</b>	1,047,350	515,000	460,000	975,000	(72,350)	0.00
Provides the funding to support the District's workers comp, unemployment, and property, casualty liability insurance and contingencies for deductibles.							
<b>16042</b>	<b>Flexible Savings Accounts/FSA</b>	800,000	800,000	0	800,000	-	0.00
Provides expenditures associated with the District's Flexible Benefit Program. A Health Care FSA is a pre-tax benefit account that's used to pay for eligible medical, dental, and vision care expenses that are not covered by your health care plan or elsewhere.							
<b>16050</b>	<b>Business</b>	416,789	52,906	244,128	297,034	(119,755)	0.50
Provides the funding to operate the school district's business services- including finance, payroll, and mandatory state and federal reporting.							
<b>16051</b>	<b>Accounting &amp; Finance</b>	760,932	810,579	23,000	833,579	72,647	7.00
Provides the funding to operate the school district's business services- including finance, payroll, and mandatory state and federal reporting.							



## 2023 Revised Budget by Budget Unit

(Staffing and budgeted Full-time Equivalent (FTE) as of January 03, 2023)

		Adopted Budget	Payroll Expenses	Non-Payroll Expenses	Revised Budget	+ / -	Revised FTE's
<b>16054</b>	<b>Business OPEB Implicit Chargeback</b>	(116,720)	(529,083)	412,363	(116,720)	-	0.00
Represents allowable medical, dental, and life insurance costs reimburseable by the district's other postemployment benefits trust (credit to general fund budget) and costs associated with required pension entries for statewide PERA and TRA programs							
<b>16060</b>	<b>Communications and Marketing</b>	541,416	360,617	184,000	544,617	3,201	3.00
Provides the funding to the District's communications and marketing initiatives, maintenance of District websites, social networks, publications, etc.							
<b>16070</b>	<b>Student Registration and Census</b>	359,386	320,315	9,786	330,101	(29,285)	4.00
Provides the funding to operate the school district's student registration, enrollment, and reporting services.							
<b>17010</b>	<b>Voluntary PreKindergarten</b>	1,168,934	1,017,701	92,700	1,110,401	(58,533)	22.25
Provides the funding to operate the Voluntary Pre-Kindergarten Program.							
<b>17011</b>	<b>Elementary Administrators</b>	1,601,306	1,589,349	0	1,589,349	(11,957)	8.00
Provides the funding to operate the elementary principals' offices at each school.							
<b>17012</b>	<b>Elementary Building Clerical</b>	663,177	678,226	0	678,226	15,049	9.00
Provides the funding to operate the elementary principals' offices at each school.							
<b>17013</b>	<b>Elementary EAs</b>	406,196	445,491	0	445,491	39,295	17.31
Provides the funding various administrative and educational roles at each school.							
<b>17021</b>	<b>Secondary Administrators</b>	1,760,939	1,904,839	0	1,904,839	143,900	11.25
Provides the funding to operate the secondary principals' offices at each school.							

## 2023 Revised Budget by Budget Unit

(Staffing and budgeted Full-time Equivalent (FTE) as of January 03, 2023)

		Adopted Budget	Payroll Expenses	Non-Payroll Expenses	Revised Budget	+ / -	Revised FTE's
<b>17022</b>	<b>Secondary Building Clerical</b>	1,060,947	1,016,553	0	1,016,553	(44,394)	15.00
Provides the funding to operate the secondary principals' offices at each school.							
<b>17025</b>	<b>Miscellaneous Stipends</b>	102,433	101,730	0	101,730	(703)	0.00
Provides the funding for miscellaneous stipends and extra hours that are currently not attached to another budget unit.							
<b>17027</b>	<b>DEC CLERICAL</b>	70,323	70,236	3,000	73,236	2,913	1.00
Provides the funding to operate the Administrative Services at Diamondhead.							
<b>18010</b>	<b>Student Transportation</b>	4,044,996	0	4,309,496	4,309,496	264,500	0.00
Provides the funding to transport eligible students to and from school including during regular and extended year/day terms.							
<b>19010</b>	<b>Custodial</b>	5,813,339	5,023,978	878,536	5,902,514	89,175	68.73
Provides the funding to operate the District's custodial services. Includes supplies, equipment and contracted services.							
<b>19020</b>	<b>Building, Grounds and Maintenance</b>	1,344,541	306,664	1,392,746	1,699,410	354,869	3.50
Provides the funding to operate the District's building, grounds and maintenance departments. Includes supplies, equipment and contracted services.							
<b>19030</b>	<b>Environmental Health and Safety/ADA Compliance</b>	2,552,416	311,384	2,255,906	2,567,290	14,874	2.60
Provides the funding to operate the District's environmental health and safety department as well as Long Term Facilities Maintenance Projects. Includes supplies, equipment and contracted services.							
<b>19040</b>	<b>Facility Leases</b>	427,787	0	527,787	527,787	100,000	0.00
Provides the funding for the District's facility leases for Pates Stadium, Ice Arena and Diamondhead leasehold improvements.							

<div>2023 Revised Budget by Budget Unit</div> <div>(Staffing and budgeted Full-time Equivalent (FTE) as of January 03, 2023)</div>							
		Adopted Budget	Payroll Expenses	Non-Payroll Expenses	Revised Budget	+ / -	Revised FTE's
19041	Facility Rental	175,000	164,450	85,550	250,000	75,000	0.89
Provides the funding for the expenditures related to rental of the District's facilities.							
19050	Warehouse and Purchasing	119,649	119,514	0	119,514	(135)	1.50
Provides the funding to operate the school district's warehouse and purchasing departments.							
19060	Utilities	1,961,000	0	2,735,000	2,735,000	774,000	0.00
Provides the funding for the District's utilities.							
20010	School Resource Officers	111,540	0	111,540	111,540	-	0.00
Provides the primary funding for school police resource officers for the district's secondary schools.							
20030	Safe Schools	286,603	117,853	168,750	286,603	-	0.11
Provides the primary funding for additional Deans at Middle Schools.							
21000	Miscellaneous State and Local Grants	71,166	241,731	80,000	321,731	250,565	2.14
Provides the primary funding for various grants received outside of Federal and Special Education funding.							
21100	Emergency Relief Aid	6,270,499	4,071,781	1,833,692	5,905,473	(365,026)	25.52
Federal emergency relief funds provided to address the impact that COVID-19 has had, and continues to have, on elementary and secondary schools across the Nation.							
Total General Fund Expenditure Budget Total General Fund Period FTEs		137,139,540	105,617,057	32,186,429	137,803,486	663,946	1,032.74

Staffing Detail by Budget Unit as of January 03, 2023

	Location Description	Full Name	FTE
<b>01010 - Elem Core Instr Person</b>			
<b>1st Grade Tcr</b>	<b>Edward Neill Elementary</b>	Allman, Kellie R	1.00
		Olsen, Laura	1.00
		Webster, Susan M	1.00
	<b>Gideon Pond Elementary</b>	Hildreth, Casey L	1.00
		Odegard, Elisa	1.00
		Rollie, Alexis K	1.00
		Trekell, Terese	1.00
	<b>Harriet Bishop Elementary</b>	Anderson, Megan	1.00
		Marshall, Debra L	1.00
		Shirley, Kaitlyn N	1.00
		Strowbridge, Staci	1.00
	<b>Hidden Valley Elementary</b>	Hiebert, Tracy	1.00
		Ibrahim, Hodan	1.00
		Katchmark, Laura E	1.00
		Langreck, Lori	1.00
		Gambucci, Ann Marie	1.00
	<b>Rahn Elementary</b>	Peterson, Keri	1.00
		Davis, Mikayla G	1.00
	<b>Sky Oaks Elementary</b>	Kachman, Angela	1.00
		Pederson, Rebecca A	1.00
		Putman, Tanja	0.50
	<b>Virtual Academy - Elementary</b>	Wilson, Elizabeth J	0.50
		Bolfing, Alisha L	1.00
	<b>Vista View Elementary</b>	Gaylord, Samuel M	1.00
		Steeg, Kimberly Kaye	1.00
		Peka, Emily	1.00
	<b>Wm Byrne Elementary</b>	Risteau, Jill A	1.00
		Simpson, Lisa	1.00
		Smith, Melissa	1.00
		Engdahl, Ann Mary	1.00
<b>2nd Grade Tcr</b>	<b>Edward Neill Elementary</b>	Lenton, Tiffany	1.00
		Wening, Alesha	1.00
		Ambuehl, Jennifer A	1.00
	<b>Gideon Pond Elementary</b>	Kleven, Mark A	1.00
		Stoneking, Stacy	1.00
		Engen, Amy	1.00
	<b>Harriet Bishop Elementary</b>	Jarzyna-ingles, Anne W	1.00
		Omodt, Jane	1.00
		Schafer, Kristy J	1.00
		Andrews, Donna	1.00
	<b>Hidden Valley Elementary</b>	Briggs, Lori A	1.00
		Tollerud, Teresa Jo	1.00
		Mathys, Sandra	1.00
	<b>Rahn Elementary</b>	Paloma, Lisa A	1.00
		Rabino, Sophie R	1.00
	<b>Sky Oaks Elementary</b>	Hull, Kelsey H	1.00
		Plaschko, Mary Beth	1.00

Staffing Detail by Budget Unit as of January 03, 2023

	Location Description	Full Name	FTE
<b>2nd Grade Tcr</b>	<b>Virtual Academy - Elementary</b>	Cooper, Kirenza I	0.50
		Gravink, Ashley	0.50
	<b>Vista View Elementary</b>	Gandrud, Jennifer L	1.00
		Kohn, Grace	1.00
	<b>Wm Byrne Elementary</b>	Boche, Sonia R	1.00
		Krzewki, Catherine D	1.00
		Mulder, Lindsey	1.00
		Tomala, Crystal M	1.00
<b>3rd GradeTcr</b>	<b>Edward Neill Elementary</b>	Wagner-smith, Sherry	1.00
		Zak, Gloria	1.00
	<b>Gideon Pond Elementary</b>	Bartling, Meghan	1.00
		Traetow, Andrea	1.00
		Zucollo, Susan R	1.00
	<b>Harriet Bishop Elementary</b>	Anderson, Melissa	1.00
		Holden, Nichole L	1.00
		Jensen, Leta	1.00
		Lobben, Angela	1.00
	<b>Hidden Valley Elementary</b>	Dwire, Melinda	1.00
		Ertl, Abby	1.00
		Taack, Gina	1.00
	<b>Rahn Elementary</b>	Guertin, Heather	1.00
		Naef, Nathan A	1.00
		Plucinak, Jody L	1.00
	<b>Sky Oaks Elementary</b>	Jermeland, Meghan M	1.00
		Schneider, Marisa Lynn	1.00
		Stoltz, Lisa A	1.00
	<b>Virtual Academy - Elementary</b>	Cooper, Kirenza I	0.50
		Gravink, Ashley	0.50
	<b>Vista View Elementary</b>	Houtman, Jennifer L	1.00
		Ivory, Courteney	1.00
	<b>Wm Byrne Elementary</b>	Hanson, Debra A	1.00
		Tompach, Tracy J	1.00
		Wurdeman, Deb Sue	1.00
<b>4th Grade Tcr</b>	<b>Edward Neill Elementary</b>	Condon, James F	1.00
		Gilray, Rebecca J	1.00
	<b>Gideon Pond Elementary</b>	Gallus, Jeffrey	1.00
		King, Dan Austin	1.00
	<b>Harriet Bishop Elementary</b>	Coronis, Stacy S	1.00
		Soruco, Maria R	1.00
		Warmka, Cheri R	1.00
	<b>Hidden Valley Elementary</b>	Batterman, Jessica M	1.00
		Lecompte, Emilie	1.00
		Rimbo, Angela B	1.00
	<b>Rahn Elementary</b>	Hill, Kari L	1.00
		Tofte, Alissa G	1.00
	<b>Sky Oaks Elementary</b>	Bryant, Melanie A	1.00
		Cunnen, Laurie A	1.00
	<b>Virtual Academy - Elementary</b>	Davidson, Jessica J	0.50

Staffing Detail by Budget Unit as of January 03, 2023

	Location Description	Full Name	FTE
<b>4th Grade Tcr</b>	<b>Vista View Elementary</b>	Dempsey, Jodi Jean	1.00
		Kramer, Krista	1.00
	<b>Wm Byrne Elementary</b>	Bragg, Kaitlin J	1.00
		Happe, Nicole	1.00
		Walgenbach, Rachel C	1.00
<b>5th Grade Tcr</b>	<b>Edward Neill Elementary</b>	Armstrong, Ryann M	1.00
		Rossow, Alison L	1.00
	<b>Gideon Pond Elementary</b>	Rau, Jessica	1.00
		Selby, Hannah	1.00
		Voris, Quincy B	1.00
	<b>Harriet Bishop Elementary</b>	Campen, Kim A.	0.25
		Dahl, Sabrina Lynn	1.00
		Morlock, Katie R	0.25
		VanHorn, Alexander W	0.50
		Wallenta, Paul S	1.00
	<b>Hidden Valley Elementary</b>	Nelson, Kathryn L	1.00
		Peltier, Brad W	1.00
		Schwenn, Jeffrey A	1.00
	<b>Rahn Elementary</b>	Hartl, Aran J	1.00
		Slattery, Cara	1.00
	<b>Sky Oaks Elementary</b>	Berg, Matthew T	1.00
		Richards, Jesse	1.00
	<b>Virtual Academy - Elementary</b>	Davidson, Jessica J	0.50
	<b>Vista View Elementary</b>	Orlenko, Corbin D	1.00
		Rogers, Cole	1.00
	<b>Wm Byrne Elementary</b>	Gierada, Barbara L	1.00
		Kersten, Sarah M	1.00
		Zupke, Samuel	1.00
<b>Interventionist</b>	<b>Sky Oaks Elementary</b>	Arthur, Paula J	0.50
<b>Kindergarten Tcr</b>	<b>Edward Neill Elementary</b>	Cantolla, Kaitlin M	1.00
		Elfering, Kaylin E	1.00
		Lippka, Jonalyn	1.00
	<b>Gideon Pond Elementary</b>	Anderson, Brittney	1.00
		Carver, Emily J	1.00
	<b>Harriet Bishop Elementary</b>	Berryman, Ashley A	1.00
		Harrold, Stacey L	1.00
		Meyer, Tanya L	1.00
		Pavek, Brooke C	1.00
	<b>Hidden Valley Elementary</b>	Finch, Christine M	1.00
		McCroskey, Shari	1.00
		Walby, Molly E	1.00
	<b>Rahn Elementary</b>	Athey, Callie L	0.25
		Elliott, Rachel R	1.00
		McCarthy, Jennifer	1.00
	<b>Sky Oaks Elementary</b>	Richardson, Sarah	1.00
		Nicholson, Marcia L	1.00
		Preston, Angela	1.00
		Ritchie, Jacki Rae	1.00

Staffing Detail by Budget Unit as of January 03, 2023

	Location Description	Full Name	FTE
	<b>Sky Oaks Elementary</b>	Strahota, Sara J	1.00
	<b>Virtual Academy - Elementary</b>	Putman, Tanja	0.50
		Wilson, Elizabeth J	0.50
	<b>Vista View Elementary</b>	Downey, Samantha R	1.00
		Tucci, Amy J	1.00
		Warren, Haley M	1.00
	<b>Wm Byrne Elementary</b>	Bernier, Brionna	1.00
		Buesgens, Abigail J	1.00
		Calnon, Jennifer	1.00
		Lamont, Heidi O	1.00
		Perez, Teresa G	1.00
<b>Learning Specialist</b>	<b>Edward Neill Elementary</b>	Herkenhoff, Patty Ann	0.75
		Kugler, Julie	0.25
	<b>Gideon Pond Elementary</b>	Macnaughton, Laura	1.00
	<b>Hidden Valley Elementary</b>	Nurmela, Crystal	0.50
	<b>Rahn Elementary</b>	Keuler, Lori J	0.75
	<b>Sky Oaks Elementary</b>	Harves, Nicole R	0.30
		Lindell, Michelle M	1.00
		Ruhland, Maria	0.20
		Teien, Joan K	1.00
<b>Psychologist</b>	<b>Hidden Valley Elementary</b>	Komar, Karen K	0.50
<b>02010 - MS Core Instr Personnel</b>			
<b>6th Grade Tcr</b>	<b>Eagle Ridge MS</b>	Barton, Duane	0.83
		Flynn, Catherine	0.33
		Kraft, Stephen	1.00
		Lewandowski, Megan J	0.83
		Lundahl, Timothy	0.32
		Mikelson, Teresa	0.67
		Mosey, Pat	0.66
	<b>Nicollet MS</b>	Cin, Stephanie P	0.67
		Coronis, Anthony L	0.56
		Glas, John M	0.50
		Gullikson, Helen	1.00
		Kelly, Katie J	1.00
		Kohner, Joseph E	0.50
		Nemetz, Scott	1.00
		Peterson, Christine K	0.17
		Ring, Katlin	0.67
		Smalley, Amy C	0.34
	<b>Virtual Academy Secondary</b>	Coronis, Anthony L	0.33
		Mosey, Pat	0.34
		Smalley, Amy C	0.33
<b>6th Grade Tcr, Lang Arts Tcr</b>	<b>Eagle Ridge MS</b>	OPEN	1.00
<b>Lang Arts Tcr</b>	<b>Eagle Ridge MS</b>	Anderson, Kristen L	0.50
		Blair, Michael E.	0.50
		Elward, Lucius P	0.50
		Flynn, Catherine	0.34

Staffing Detail by Budget Unit as of January 03, 2023

	Location Description	Full Name	FTE
Lang Arts Tcr	Eagle Ridge MS	Moran, Molly K	1.00
		Parkinson, Jacquelyn R	0.50
		Thomas, Jessica	0.34
	Nicollet MS	Abdullahi, Ibrahim H	0.50
		Brainard, Cole D	1.00
		Hansen, William C	0.67
		Orth, Steven D.	0.33
		Salad, Hawa D	0.50
		Schmidt, Jennifer R	1.00
		Smolke, Angela S	0.33
		Sorensen, Brad	0.50
		Grueneich, Janelle	0.07
		Hammer, Jeffrey	0.07
		Mosey, Pat	0.07
		Thomas, Jessica	0.07
Lunch Supervision - TEA	Eagle Ridge MS	Challgren, Peg Ten	0.07
		Glas, John M	0.07
	Nicollet MS		
Math Tcr	Eagle Ridge MS	Czapar, Ryan J	0.50
		Drutowski, Alison	0.50
		Grueneich, Janelle	0.50
		Isaacson, Melissa J	0.50
		Nelson, Michelle L	0.50
	Nicollet MS	Bakeberg, Jessie L	0.50
		Benson, Ross S	0.50
		Funches, Monique Roy	0.34
		Geddes, Richard W	0.67
		Philipsek, Megan K	0.50
		Sticha, Matthew	0.50
		Beckmann, Emily C	0.83
		Hammer, Jeffrey	1.00
		Lundahl, Timothy	0.17
		Meyer, Chad	1.00
		Pieper, Jill	0.17
		Challgren, Peg Ten	1.00
		Liberacki, Lauren	1.00
		Pieper, Jill	0.66
PLTW Science Tcr	Eagle Ridge MS	Pranschke, Stephanie T	1.00
		Klubberud, Michael	1.00
		Lundahl, Timothy	0.17
	Nicollet MS	Simmons, Sean D	0.20
		Yager, Amy	1.00
		Elfering, Jean	0.83
		Iverson, Adam	1.00
		Kammueller, Inga K	0.83
		Khamratthanome, Bounthavy	1.00
		Meyer, Joseph	1.00
Soc Stu Tcr	Eagle Ridge MS	Moran, Molly K	0.06
		Larson, Rachael M	0.30
	Nicollet MS		
TOSA	Eagle Ridge MS		
Traveling Teacher	Eagle Ridge MS		
World Lang Tcr	Eagle Ridge MS		



Staffing Detail by Budget Unit as of January 03, 2023

	Location Description	Full Name	FTE
<b>World Lang Tcr</b>	<b>Nicollet MS</b>	Blazquez, Javier	0.33
<b>03010 - HS Core Instr Personnel</b>			
<b>Avid Tcr</b>	<b>Burnsville HS</b>	Christy, Danielle H	0.20
		Harrod, Kim	0.20
<b>BEA President</b>	<b>District-wide</b>	Wuensch, Wendy Drugge	1.00
<b>Dance Tcr</b>	<b>Burnsville HS</b>	Waller, Jennifer	0.20
<b>Lang Arts Tcr</b>	<b>Burnsville HS</b>	Burke, Katie J	0.80
		Connell, Paul J	0.60
		Dyrhaug, Michelle	1.00
		Eggers, Sheana	0.80
		Hansen, Marie C	0.80
		Hazelton, Morgan T	1.00
		Millea, Allison B	0.80
		Parkin, Landen A	1.00
		Rudolph, Roxanne J	1.00
		Staum, Anne C	1.00
		Vonderharr, Alicia	0.60
		Waller, Jennifer	0.60
		Webber, Gloria M	1.00
	<b>Virtual Academy Secondary</b>	Eggers, Sheana	0.20
		Orth, Steven D.	0.17
		Thomas, Jessica	0.17
		Vonderharr, Alicia	0.40
<b>Math Tcr</b>	<b>Burnsville HS</b>	Banitt, Justin	0.60
		Christian, David	0.80
		Croatt, Charles C	1.00
		Delmont, Brooke	1.00
		Harrod, Kim	0.61
		Kuziej, Janet L	0.80
		Meuser, Teresa	1.00
		Nelson, Amy	1.00
		Noss, Jean	1.00
		Quamme, David R	1.00
		Vogt, Kendra M	0.30
	<b>Virtual Academy Secondary</b>	Christian, David	0.20
		Goff, Tara P	0.50
		Harrod, Kim	0.20
		Kuziej, Janet L	0.20
<b>Science Tcr</b>	<b>Burnsville HS</b>	Blandin, Melissa	1.00
		Burns, Margaret A	0.70
		Davidson, Elizabeth A	1.00
		Douglas, Lori	1.00
		Hoeschen, Kerry	1.00
		Holt, Clayton B	0.70
		Huber, Jon Alan	0.80
		Huemoeller, Michael T	0.60
		Johnson, Cory Charles	0.60

Staffing Detail by Budget Unit as of January 03, 2023

	Location Description	Full Name	FTE	
Science Tcr	Burnsville HS	Morgan, William E	1.00	
		Owings, Harrison D	1.00	
		Weightman, Elizabeth C	1.00	
	Virtual Academy Secondary	Huemoeller, Michael T	0.20	
		Johnson, Cory Charles	0.20	
		Pieper, Jill	0.17	
Soc Stu Tcr	Burnsville HS	Aars, Kristina	1.00	
		Bousu, Mollie J	0.80	
		Engelhardt, William T	1.00	
		Eppen, Matthew W	0.80	
		Graff, Jenn	1.00	
		Jensen, Jennifer	1.00	
		McDevitt, Paul David	0.70	
		Milinovich, Chris M	0.90	
		Moffitt, Leslie Allan	0.80	
		Silberman, Kevin	1.00	
		Simmons, Sean D	0.60	
		Strand, Nate R	1.00	
		VanSchoonhoven, Katherine	0.60	
		Wendling, Kathryn	0.80	
		Virtual Academy Secondary	Elfering, Jean	0.17
			Eppen, Matthew W	0.10
			Lundahl, Timothy	0.17
			McDevitt, Paul David	0.10
			Milinovich, Chris M	0.10
	Traveling Teacher	Burnsville HS	VanSchoonhoven, Katherine	0.20
Blazquez, Javier			0.19	
Harrod, Kim			0.04	
Larson, Rachael M			0.04	
World Lang Tcr	Burnsville HS	Blazquez, Javier	0.47	
		Dundon, Mary Lou	1.00	
		Holcombe, Sara J	0.80	
		Larson, Rachael M	0.50	
		Lehner, Timothy	1.00	
	Virtual Academy Secondary	Blazquez, Javier	0.20	
		04010 - K12 PhyEd/Art/Math/Music		
Art Tcr	Burnsville HS	Buckrey, Susan E	1.00	
		Kegley, Robyn E	1.00	
		Pings, Kenadie B	1.00	
		Soley, Nicole D	1.00	
	Eagle Ridge MS	Weilandgruber, Elizabeth	0.83	
	Edward Neill Elementary	Binn, Malorie	0.67	
	Gideon Pond Elementary	Schrivier, Mara C	0.75	
	Harriet Bishop Elementary	Nazarens, Taylor R	1.00	
	Hidden Valley Elementary	Merkel, Sara A	1.00	
	Nicollet MS	Hoffman, Emiley	0.83	
	Rahn Elementary	Starkey, Maria N	0.75	

Staffing Detail by Budget Unit as of January 03, 2023

	Location Description	Full Name	FTE
<b>Art Tcr</b>	<b>Sky Oaks Elementary</b>	Knott, Kelly S	1.00
	<b>Virtual Academy - Elementary</b>	Schrivers, Mara C	0.25
	<b>Virtual Academy Secondary</b>	Hoffman, Emiley	0.17
		Weilandgruber, Elizabeth	0.17
	<b>Vista View Elementary</b>	Binn, Malorie	0.33
<b>Band Tcr</b>		Starkey, Maria N	0.25
	<b>Wm Byrne Elementary</b>	Vo, Kelly Rae	1.00
	<b>Burnsville HS</b>	French, Keith J	1.00
		Holmes, Molly	1.00
	<b>Eagle Ridge MS</b>	Armstrong, Nicholas G	0.75
<b>Lunch Supervision - TEA</b>	<b>Nicollet MS</b>	Bakken, Ann	0.67
		Kosloski, Scott	0.20
		Brown, Christopher M	0.07
		Nesseth, Paul L	0.07
<b>Music Tcr</b>	<b>Eagle Ridge MS</b>	Adkins, Abigail E	0.50
		Armstrong, Nicholas G	0.08
	<b>Edward Neill Elementary</b>	Tranby, Bonnie K.	0.67
	<b>Gideon Pond Elementary</b>	Buck, Rebecca L	0.75
	<b>Harriet Bishop Elementary</b>	Geesman, Garrett D	1.00
	<b>Hidden Valley Elementary</b>	Wood, Kimberly R	1.00
	<b>Nicollet MS</b>	Adkins, Abigail E	0.32
	<b>Sky Oaks Elementary</b>	Engbretson, Allison	1.00
	<b>Virtual Academy - Elementary</b>	Buck, Rebecca L	0.25
	<b>Virtual Academy Secondary</b>	Adkins, Abigail E	0.18
	<b>Vista View Elementary</b>	Tranby, Bonnie K.	0.33
	<b>Wm Byrne Elementary</b>	Langsjoen, Sonja	1.00
	<b>Burnsville HS</b>	Brown, Christopher M	0.10
		Fritz, Kimberly A	1.00
		Johnson, Ronna E	1.00
<b>Phy Ed Tcr</b>		Reuss, Eric	1.00
		Riggs, Mark D	1.00
		Stachowski, Susan C	0.80
		Varpness, Vincent C	1.00
	<b>Eagle Ridge MS</b>	Hermes, Shelley	1.00
		Holden, Matt J	0.34
		Pearson, Chad W	1.00
	<b>Edward Neill Elementary</b>	Mode, Jason T	0.33
		Moorlach, Brian	0.25
	<b>Gideon Pond Elementary</b>	Dungey, Nate	0.75
	<b>Harriet Bishop Elementary</b>	Loesch, Jake	1.00
	<b>Hidden Valley Elementary</b>	Shelden, Jon	1.00
	<b>Nicollet MS</b>	Brown, Christopher M	0.30
		Kubes, Margaret J	1.00
		Nesseth, Paul L	1.00
	<b>Rahn Elementary</b>	Moorlach, Brian	0.75
	<b>Sky Oaks Elementary</b>	Ceola, Mike	1.00
	<b>Virtual Academy - Elementary</b>	Dungey, Nate	0.25
	<b>Virtual Academy Secondary</b>	Brown, Christopher M	0.26

Staffing Detail by Budget Unit as of January 03, 2023

	Location Description	Full Name	FTE
Phy Ed Tcr	Virtual Academy Secondary	Stachowski, Susan C	0.20
	Vista View Elementary	Mode, Jason T	0.67
	Wm Byrne Elementary	Mckane, Michelle M	1.00
Strings Tcr	Burnsville HS	Kosloski, Scott	0.40
	Eagle Ridge MS	Armstrong, Nicholas G	0.17
		Nimchuk, Sarah T	0.25
	Nicollet MS	Kosloski, Scott	0.40
Traveling Teacher	Eagle Ridge MS	Adkins, Abigail E	0.04
Vocal Tcr	Burnsville HS	Leyva, Ana M	1.00
	Nicollet MS	Bakken, Ann	0.33
<b>06000 - Medical Careers Personnel</b>			
Health Care Tcr	Burnsville HS	Werner-Dempsey, Anne	1.00
<b>06010 - FACS Instr Personnel</b>			
Facs Tcr	Burnsville HS	Deutsch, Matt R	0.50
		Eichten, Heidi J	0.80
		Holman, Sandra L	1.00
		Spies, Gabrielle	0.80
		West, Julie	0.42
	Eagle Ridge MS	Borden, Paige M	1.00
	Nicollet MS	Ruzichka, Laurie	1.00
		West, Julie	0.33
	Virtual Academy Secondary	West, Julie	0.25
	Nicollet MS	West, Julie	0.03
Traveling Teacher			
<b>06020 - Trade Instr Ed Personnel</b>			
Ind Tech Tcr	Burnsville HS	Haupt, Jonathan R	0.90
		Patrie, Orion D	0.90
		Tesmer, Russell	1.00
PLTW	Virtual Academy Secondary	Patrie, Orion D	0.10
	Nicollet MS	Paetzold, Robert James	0.83
	Virtual Academy Secondary	Haupt, Jonathan R	0.10
Traveling Teacher		Paetzold, Robert James	0.17
	Burnsville HS	Patrie, Orion D	0.01
	Nicollet MS	Paetzold, Robert James	0.02
<b>06030 - Career &amp; Technical Personnel</b>			
Work Exp Tcr	Burnsville Alternative HS	Bates, Daniel W	0.90
<b>06040 - Business Ed Personnel</b>			
Business Tcr	Burnsville HS	Carroll, Michele	0.80
		Lunde, Christopher R	0.80
		Mayernik, Maggie	1.00
	Virtual Academy Secondary	Carroll, Michele	0.20
		Lunde, Christopher R	0.20
Facs Tcr	Virtual Academy Secondary	Deutsch, Matt R	0.10
		Eichten, Heidi J	0.20

Staffing Detail by Budget Unit as of January 03, 2023

	Location Description	Full Name	FTE	
Facs Tcr	Virtual Academy Secondary	Spies, Gabrielle	0.20	
Interventionist	Virtual Academy Secondary	Shimshock, Erik A	0.20	
Traveling Teacher	Burnsville HS	Lunde, Christopher R	0.02	
06050 - Partnership Burnsville Pro				
Dir Strategic Partnerships	Diamondhead	Funston, Kathy L	1.00	
07010 - K12 Media Serv Support				
EA Media Support	Edward Neill Elementary	Scheuneman, Kristen Joy	0.59	
	Gideon Pond Elementary	Butorac, Melanie A	0.59	
	Harriet Bishop Elementary	Becker, Sarah J	0.59	
	Hidden Valley Elementary	Schatzlein, Rachel	0.59	
	Rahn Elementary	Christman, Amber S	0.59	
	Sky Oaks Elementary	Berge, Kristy K	0.59	
	Vista View Elementary	Cermak, Barbara L	0.59	
	Wm Byrne Elementary	Engberg, Denise G	0.59	
Media Specialist	Burnsville HS	Oie, Roger	1.00	
	Eagle Ridge MS	Galland, John	1.00	
	Nicollet MS	Meyer, Nancy L	1.00	
07020 - K12 Gifted Talented Support				
Advanced Learning	Edward Neill Elementary	Petrella, Sara M	0.50	
	Sky Oaks Elementary	Petrella, Sara M	0.50	
07030 - K12 Guidance Serv Support				
College & Career Specialist	Burnsville HS	Sexton, Marcia	1.00	
Counselor	Burnsville HS	Harrison, Phillip Scott	1.00	
		Hegy, Colleen S	1.00	
		Markham, Angela L	1.00	
		Marshall, Veronica Jean	1.00	
		Schwanke, Samantha	1.00	
		Soderholm, John	1.00	
		Eagle Ridge MS	Russell, Desha S	1.00
			Thornton, Madison M	1.00
	Nicollet MS	Hemmah, Katy M	1.00	
		Waterman, Molly K	1.00	
	TOSA	District-wide	Clark- Miles, Dorothy	0.60
07040 - DEANS				
Dean	Burnsville HS	Grahn, Anders AD	1.00	
		Shaw, David W	1.00	
		Torres, Hector R	1.00	
	Eagle Ridge MS	Claiborn, LaShunda R	1.00	
		El-Shabazz, Deonta	1.00	
		Nicollet MS	Conwell, Peirre D	1.00
		Henderson, Michelle A	1.00	
07060 - ESL				

Staffing Detail by Budget Unit as of January 03, 2023

	Location Description	Full Name	FTE
<b>ESL Tcr</b>	<b>Burnsville Alternative HS</b>	Friendt, Andrea Lynn	1.00
	<b>Burnsville HS</b>	Edmondson, Eduardo	1.00
		Larson, Rachael M	0.20
		Lorincz, Kristen L	1.00
		Moren, Kimberly J	1.00
		Moukrim, Mina	1.00
		O'Sheaghnessy, Susan	1.00
		Parent, Andrea J	0.80
		Thompson, Saloua	1.00
		Winterlin, Jeffrey	1.00
	<b>District-wide</b>	Quinonez, Jessica L	1.00
	<b>Eagle Ridge MS</b>	Garrison, Amber L	1.00
		Heil, Rachel A	1.00
		Limberg, Mindi L	1.00
	<b>Edward Neill Elementary</b>	Moran, Ryan W	1.00
		Musa-agboneni, Kari	1.00
		Rhinevault, Lynn	1.00
	<b>Gideon Pond Elementary</b>	Beeninga, Jane	1.00
		King, Kristen	1.00
	<b>Harriet Bishop Elementary</b>	Blom, Anne E	1.00
		Christenson, Rachel A	1.00
		Kessler, Cecilia	1.00
		McKinney, Margo	1.00
		Mikunda, Rynne R	0.50
	<b>Hidden Valley Elementary</b>	Michels, Christine	1.00
		Mikunda, Rynne R	0.50
		O'brien, Brianna	1.00
		Reissy, Meagan C	1.00
		Sasseville-Praska, Natalie M	1.00
	<b>Nicollet MS</b>	Cadwell, Ann M	0.50
		Cherne, Emily A	1.00
		Olson, Amy	1.00
		Proctor, Beth	1.00
	<b>Rahn Elementary</b>	Arias, Angela Joy	1.00
		Olson, Kimberly Lenora	1.00
	<b>Sky Oaks Elementary</b>	Cadwell, Ann M	0.50
		Jones, Noelle	1.00
		King, Hannah	1.00
		Rippenburg, Wendy A	1.00
	<b>Virtual Academy Secondary</b>	Blair, Frances M.	1.00
	<b>Vista View Elementary</b>	Carlson, Lisa M	1.00
		Zimmerman, Kara J	1.00
	<b>Wm Byrne Elementary</b>	Benson, Briana M	1.00
		Cisek, Abigayil	1.00
		Johnson, Ashley	1.00
<hr/>			
<b>09010 - Spec Ed Salaries/Bene</b>			
<b>Ace L3 Secretary</b>	<b>BES Transition Services</b>	Tanberg, Teri L	1.00

Staffing Detail by Budget Unit as of January 03, 2023

	Location Description	Full Name	FTE
<b>Ace L4 Admin Asst/Specialist</b>	<b>Diamondhead</b>	Gries, Brenda J	1.00
		Hardt, Annette	1.00
	<b>ECSE</b>	Mcbride, Kristen	1.00
<b>Assistive Tech Tcr</b>	<b>District-wide</b>	Nelson, Katie L	1.00
<b>Behavior Analyst</b>	<b>District-wide</b>	Czapar, Kelly N	0.90
		Ewert, Casey B	0.90
<b>Cultural Liaison</b>	<b>ECSE</b>	Hassan, Rahma	1.00
		Riveros, Anna-maria	1.00
<b>Dape</b>	<b>District-wide</b>	Holden, Matt J	0.66
		Sweeney, Michael J	1.00
		Brown, Christopher M	0.34
<b>Dir Special Ed</b>	<b>Diamondhead</b>	Piotrowski, Amy	1.00
<b>EA Health</b>	<b>Wm Byrne Elementary</b>	Coleman, Sonya	0.91
<b>ECSE Coordinator</b>	<b>ECSE</b>	Wakal, Kimberly B	1.00
<b>ECSE Tcr</b>	<b>ECSE</b>	Albersheim-Carter, Marcina	1.00
		Barcus, Christine J	1.00
		Blomquist, Stephanie	1.00
		Blood, Kelsey Jo	1.00
		Bresina, Autumn R	1.00
		Clancy, Carissa	1.00
		Dedomines, Jennifer L	1.00
		Ebenhoh, Teegan M	1.00
		Erbes, Sarah L	1.00
		Melquist, Michelle	1.00
		Nelson, Katherine J	1.00
		Ness, Karen M	1.00
		Niemiec, Alicia	1.00
		Nolte, Nicole L	1.00
		OPEN	2.00
		Yost, Molly M	1.00
<b>Learning Specialist</b>	<b>Edward Neill Elementary</b>	Herkenhoff, Patty Ann	0.25
		Kugler, Julie	0.75
	<b>Gideon Pond Elementary</b>	Mirs, Laurel	1.00
	<b>Harriet Bishop Elementary</b>	Campen, Kim A.	0.75
		Morlock, Katie R	0.75
	<b>Hidden Valley Elementary</b>	Collins, Leanne	1.00
		Nurmela, Crystal	0.50
	<b>Rahn Elementary</b>	Keuler, Lori J	0.25
	<b>Sky Oaks Elementary</b>	Harves, Nicole R	0.70
		Ruhland, Maria	0.80
	<b>Vista View Elementary</b>	Crawford, Cynthia Y	1.00
	<b>Wm Byrne Elementary</b>	Hanson, Lisa	1.00
<b>Nurse - LPN</b>	<b>ECSE</b>	Wolke, Sara C	0.60
<b>Nurse - LSN</b>	<b>Burnsville HS</b>	Beaulieu, Kourtney A	0.36
	<b>District-wide</b>	Bien, Bernadette L	0.40
	<b>Eagle Ridge MS</b>	Eilertson, Jane Ann	0.21
	<b>Gideon Pond Elementary</b>	Cozad, Patricia M	0.19
	<b>Nicollet MS</b>	Mjelleli, Emily L	0.21

Staffing Detail by Budget Unit as of January 03, 2023

	Location Description	Full Name	FTE
<b>Nurse - LSN</b>	<b>Rahn Elementary</b>	Stinson, Katrina L	0.04
	<b>Sky Oaks Elementary</b>	Cozad, Patricia M	0.27
	<b>Wm Byrne Elementary</b>	Stinson, Katrina L	0.72
<b>Nurse - RN</b>	<b>Burnsville HS</b>	Robison, Kim A	0.16
	<b>District-wide</b>	Farkash, Angela R	1.00
	<b>Edward Neill Elementary</b>	Scoville, Jennifer	1.00
	<b>Hidden Valley Elementary</b>	Exley, Amanda	0.18
<b>Occ Therapist</b>	<b>District-wide</b>	Cesaro-Moxley, Rachel L	0.50
		Elliott, Jenna E	1.00
		Kolstad, Michele M	1.00
		Roeske, Melissa L	1.00
	<b>ECSE</b>	Erickson, Kayla M	1.00
		Oliver, Kerry M	1.00
		Robole, Vicki M	1.00
		Lian, Jocelyn M	1.00
		Nixon, Susan M	0.10
		Gunderson, Mary Jane N	0.10
<b>Physical Therapist</b>	<b>District-wide</b>		
<b>Psychologist</b>	<b>BES Transition Services</b>	Nixon, Susan M	0.10
	<b>Burnsville Alternative HS</b>	Gunderson, Mary Jane N	0.10
	<b>Burnsville HS</b>	Gunderson, Mary Jane N	0.90
		Nixon, Susan M	0.90
	<b>Eagle Ridge MS</b>	Kral, Melissa M	1.00
	<b>ECSE</b>	Kennedy, Jennifer K	0.60
		Petersen, Holly M	0.80
	<b>Edward Neill Elementary</b>	Otto, Caron	0.50
	<b>Gideon Pond Elementary</b>	Otto, Caron	0.50
	<b>Harriet Bishop Elementary</b>	Lautigar-beutz, Julie	0.50
	<b>Hidden Valley Elementary</b>	Komar, Karen K	0.50
	<b>Nicollet MS</b>	Krylova, Anna V	1.00
	<b>Rahn Elementary</b>	Lautigar-beutz, Julie	0.50
	<b>Sky Oaks Elementary</b>	Arthur, Paula J	0.50
	<b>Vista View Elementary</b>	Roehl, Peter A	0.50
	<b>Wm Byrne Elementary</b>	Roehl, Peter A	0.50
<b>Social Worker</b>	<b>Burnsville HS</b>	Hewett, Thomas	0.35
		Morrissey, Michelle M	0.35
	<b>Eagle Ridge MS</b>	Poliquin, Anne E	0.35
	<b>ECSE</b>	Mauroy, Renee D	1.00
		Parker, Sarah E	0.35
	<b>Edward Neill Elementary</b>		
	<b>Gideon Pond Elementary</b>	Khalif, Abdullahi M	0.35
	<b>Harriet Bishop Elementary</b>	Koch, Rebecca M	0.35
	<b>Hidden Valley Elementary</b>	Gauer-Kloos, Megan	0.35
	<b>Nicollet MS</b>	Fahey, Kara J	0.35
		Mains, Kristin E	0.35
	<b>Rahn Elementary</b>	Keller, Katie	0.35
	<b>Sky Oaks Elementary</b>	Green, Devon L	0.28
	<b>Vista View Elementary</b>	Lemke, Emily A	0.35
	<b>Wm Byrne Elementary</b>	Bruns, Brittany G	0.35
<b>Sped Ea</b>	<b>BES Transition Services</b>	Anderson, Cheryl L	0.88
		Engstrom, Heather L	0.88
		Finch, Jeanne	0.88



Staffing Detail by Budget Unit as of January 03, 2023

	Location Description	Full Name	FTE
Sped Ea	BES Transition Services	Frank, Sharon M	0.88
		Goodling, Beverly	0.88
		Koechlein, Laurie Leeanne	0.88
		Tousignant, Kare-kathleen K	0.88
	Burnsville HS	Ahmed, Amina	0.88
		Blanchard, Trey C	1.00
		Bocklund, Timothy	0.88
		Chroust, Vicki	0.88
		Dixon, Dave T	0.88
		Garvis, Angela N	0.88
		Gibbs Holtan, Helen	0.88
		Kaytor, Linda K	0.88
		Kinsella, Joe	0.88
		Kolumbus, Ryan C	0.88
		Larson, Janet Anne	0.88
		Lorig, Diane	0.88
		Martinson, Joni	0.88
		OPEN	1.81
		Ray, Stephen	0.88
		Robles, Michelle R	0.88
		Smidt, Holly B	0.88
	Eagle Ridge MS	Ashley, James M	0.91
		Bringgold, Debbie	0.91
		Evans, Lukah W	0.91
		Gillis, Cindy M	0.91
		Kusniryk, Cassidy J	0.91
		Kusniryk, Kelly R	0.91
		Murray, Cathleen H	0.91
		Nassar, Thanaa R	0.91
		Schwarz, Darcie N	0.91
	ECSE	Artiga-rosa, Patricia	0.81
		Bachmeier, Michelle M	0.81
		Kantor, Nancy M	0.81
		Kendall, Dasia K	0.81
		Mai, Anh T	0.81
		Mohamed Ahmed, Malaz K	0.81
		OPEN	0.91
		Painter, Terri Lynn	0.81
		Schroeder, Gina M	0.81
		Smith, Brittney	0.81
		Walterson, Kristen A	0.81
		Zich, Mary M	0.78
	Edward Neill Elementary	Gronseth, Allyssa M	0.91
		Haile, Shamso A	0.91
		Hammoud, Hanaa	1.00
		Heger, Elizabeth A	0.91
		Herman, Linda R	0.91
		Kuhlman, Susan M	0.91

Staffing Detail by Budget Unit as of January 03, 2023

Location Description	Full Name	FTE
<b>Edward Neill Elementary</b>	Pofahl, Janell C	0.91
	Rockett, Joan	0.91
<b>Gideon Pond Elementary</b>	Hendrickson, Lisa	0.91
	Mohamud, Ayan O	1.00
	OPEN	1.81
	Theis, Rachael L	0.91
	Weatherford, Andrea M	0.91
	Wilson, Danelle P	0.91
<b>Harriet Bishop Elementary</b>	Adamson, Kimberly S	0.91
	Carney, Catherine	0.91
	Chhen, Kuoy L	0.91
	Dantoft, Erik N	0.91
	Foley, Alena M	0.91
	Keirstead, Amy	0.91
	Mcguire, Rebecca L	0.91
	OPEN	0.91
	Rathjen, Lori A	0.91
	Schmitt, Hanna R	1.00
	Weber, Robert D	0.91
<b>Hidden Valley Elementary</b>	Datres, Susan	0.91
	Davila, Ruth E	0.91
	Jones, Jean	0.91
	Kienitz, Darlys	0.91
	Leake, Roxanne	0.91
	Ochoa Herrera, Lisbet	0.91
	Peterson, Kim L	0.91
	Sanz, Margaret M	0.91
	Somerville, Raha A	0.91
	Twardoski, Ruthann	0.91
<b>Nicollet MS</b>	Barr, Sarah B	1.00
	Brown, Patricia L	0.91
	Graves, Diana L	0.91
	Hartman, Daniel	1.00
	Miskiewicz, Kelly A	0.91
	Needham, Diane M	0.91
	Neptuno-temozan, Julio	0.91
	Olson, Pamela S	0.91
	OPEN	2.72
	Payne, Debra Kay	0.91
	Queen, LeVar A	0.91
	Reeves, Jonathan K	0.91
	Soucek, Mary L	0.91
	Thompson, Robert L	0.91
<b>Rahn Elementary</b>	Buising, Marlene L	0.91
	Droege, Sheryl L	0.91
	Ho, Linda S	0.91
	Noor, Khadra	0.91
	Raichert, Sarah	0.91

Staffing Detail by Budget Unit as of January 03, 2023

	Location Description	Full Name	FTE
	<b>Rahn Elementary</b>	Reuter, Lisa L	0.91
		Sarhan, Sabah	0.91
		Sunde, Sara	0.91
		Torres-Busch, Michaeline E	0.91
		Wegner, Lisa L	0.91
	<b>Sky Oaks Elementary</b>	Boldt, Julie A	0.91
		Jungers, Gail	0.91
		Kegley, Renee C	0.91
		Mathews, Heather L	0.91
		Mohamed, Yurub M	0.91
		Mohamud, Fauzia T	0.91
		OPEN	1.81
		Ruiz, Jessica	0.91
		Santos, Laura	0.91
		Schiller, Lori L	0.91
		Spaulding, Kristie	0.91
		Subah, Motee	0.88
		Ulrich, Kimberly A	0.94
	<b>Virtual Academy - Elementary</b> <b>Vista View Elementary</b>	Auge, Elizabeth	0.91
		Boekhoff, Melissa M.	0.91
		Brown, Ruth	0.91
		Hall, Jennifer J	0.91
		Kuskayeva, Irina V	0.91
		Latourelle, Sandra E	0.91
		Meitrodt, Kathleen M	0.91
		Pettengill, Taylor M	0.91
		Roark, Kari L	0.91
		Abdallah, Hibo Saad	0.91
		Adam, Sile Y	0.91
		Ahmed, Faiza A	0.91
		Freeman, Tammy S	0.91
	<b>Wm Byrne Elementary</b>	Godfrey, Cintra L	0.91
		Herbold, Nancy L	0.91
		O'donnell, Joseph J	0.91
		OPEN	0.91
		Ortiz, Janina E	1.00
		Peters, John F	1.00
		Scott, Angela J	0.91
		Theyson, Brenda	0.91
		Cherry, Carolyn J	0.50
		Middendorf, Jennifer L	1.00
		Thompson, Dana K	1.00
		Oscarson Wanzek, Kristi R	1.00
		Anderson, Kasey D	1.00
<b>Sped Supervisor</b>	<b>Diamondhead</b>	Chrissis, Erik R	1.00
		Schmidtke, Angila R	1.00
<b>Sped Tcr</b>	<b>District-wide</b> <b>BES Transition Services</b>	Seamen, Michelle A	1.00
		Morris, Angela J	1.00
	<b>Burnsville Alternative HS</b>		

Staffing Detail by Budget Unit as of January 03, 2023

	Location Description	Full Name	FTE
Sped Tcr	Burnsville HS	Ansell, Emily	1.00
		Bortel, Shawn D	1.00
		Brammer, Olivia A	1.00
		Bunkers, Kathleen K	1.00
		Cox, Kelly J	1.00
		Eiler, Elizabeth P	1.00
		Galles, Betsy M	1.00
		Ganion, Emma C	1.00
		Kappel, Genevieve N	1.00
		Kibler, Christian D	1.00
		Knox, Jacob M	1.00
		Lauer, Lisa N	1.00
		McCool, Molly	1.00
		Nelson, Emily A	1.00
		Neuer, Michelle E	1.00
		Palmer, David E	1.00
		Pawley, Meg A	1.00
		Roark, Kim J	1.00
		Russell, Dimitri	1.00
		Smith, Ashley	1.00
		Tandberg, Jennifer K	1.00
		Walker, Ryan M	1.00
		Webber, Jeffrey	1.00
	District-wide	Zondag-Hamer, Kimberly	0.50
	Eagle Ridge MS	Byrne, Edward	1.00
		Chouanard, Mary E	1.00
		Fredricks, Joel J	1.00
		Gonnella, Mark P	1.00
		Hermansen, Laura J	1.00
		Mikkelsen, Timothy	1.00
		Nash, Derek B	1.00
		Nicklin, Liza	1.00
	Edward Neill Elementary	Bing, Dena M	1.00
		Discher, Tracy L	1.00
		Okerstrom, Michelle K	1.00
		Sullivan, Jodi L	0.50
	Gideon Pond Elementary	Lynch, Molly	1.00
		Tucker, Emily A	1.00
		Tushie, Patricia	1.00
	Harriet Bishop Elementary	Classen, Jodie L	1.00
		Hassler, Hannah E	1.00
		Logan, Kari M	0.50
		Mickelson, Ashly D	1.00
		Pred, Renee R	1.00
	Hidden Valley Elementary	Biagi, Louis	1.00
		Brown, Alta T	1.00
		Gagner, Ashly	1.00
		Hanson, Alyssa	1.00

Staffing Detail by Budget Unit as of January 03, 2023

	Location Description	Full Name	FTE
	<b>Hidden Valley Elementary</b>	Pettes, Julie A	1.00
		Sullivan, Jodi L	0.50
	<b>Nicollet MS</b>	Bell, Angela	1.00
		Blons, Lliane M	1.00
		Ferguson, Antanaya S	1.00
		Geditz, Randall J	1.00
		McCue, Michelle	1.00
		Rappe, Brian	1.00
		Scheit, Andrea	1.00
		Schroeder, Jean M	1.00
		Tetzloff, Mitzi R	1.00
		Tillman, Megan	1.00
	<b>Rahn Elementary</b>	Branch, Nancy C	1.00
		Bunce, Jack K	1.00
		Fechner, Susan	0.50
		Reeson, Katie	1.00
		Zwicke, Kayla M	1.00
	<b>Sky Oaks Elementary</b>	Crespin, Jason C	1.00
		Hansen, Amy	1.00
		Hanson, Amy E	1.00
		Logan, Kari M	0.50
		Sowieja, Olivia	1.00
		Tangney, Amy K	1.00
	<b>St. John's</b>	Glashagel, Megan D	0.40
	<b>Virtual Academy - Elementary</b>	Hill, Madeline E	1.00
	<b>Virtual Academy Secondary</b>	Miller, Jill Elizabeth	0.75
	<b>Vista View Elementary</b>	Fechner, Susan	0.50
		Peterson, Julie A	1.00
		Santele, Layne A	1.00
		Trisko, Mary	1.00
		Woods, Megan M	1.00
	<b>Wm Byrne Elementary</b>	Bugenhagen, Erica A	1.00
		Heller, Mary R	1.00
		Henrich, Sarah L	1.00
		Smith, Jennifer S	1.00
		Stegbauer, Amethyst R	1.00
		Zondag-Hamer, Kimberly	0.50
<b>Speech Language Assistant</b>	<b>Eagle Ridge MS</b>	Robran, Kimberly J	0.70
<b>Speech Tcr</b>	<b>Burnsville HS</b>	Barnes, Cherise C	1.00
	<b>Eagle Ridge MS</b>	Schlichting, Catherine	0.50
	<b>ECSE</b>	Jordan, Joanna	1.00
		Neal, Bryeny B	1.00
		Niesen, Elizabeth A	1.00
		Nordeen, Denise M	1.00
		Vodnick, Sarah A	1.00
		Woodcock, Sue M	0.80
	<b>Edward Neill Elementary</b>	Jamison, Darcie L	1.00
	<b>Gideon Pond Elementary</b>	Klein, Heather	1.00

Staffing Detail by Budget Unit as of January 03, 2023

	Location Description	Full Name	FTE
Speech Tcr	Harriet Bishop Elementary	Witt, Samantha M	1.00
	Hidden Valley Elementary	Spoden, Annemarie	1.00
	Nicollet MS	Brinkman, Carole I	0.50
	Rahn Elementary	Klinnert, Elizabeth	1.00
	Sky Oaks Elementary	Faust, Danielle M	1.00
	Vista View Elementary	Meulebroeck, Susanne	1.00
	Wm Byrne Elementary	Kibler, Jeanne	1.00
TOSA	Diamondhead	McDowell, Morgan	0.26
Work Exp Tcr	BES Transition Services	Erickson, Shelly L	1.00
	Burnsville HS	Pope, Kristina	1.00
10010 - ALC/At Risk Programming			
6th Grade Tcr	Eagle Ridge MS	Barton, Duane	0.17
		Mikelson, Teresa	0.33
	Nicollet MS	Cin, Stephanie P	0.33
		Coronis, Anthony L	0.11
		Glas, John M	0.50
		Kohner, Joseph E	0.50
		Ring, Katlin	0.33
Ace L3 Secretary	Burnsville Alternative HS	Ho-Buttleman, Staci	1.00
Ace L4 Admin Asst/Specialist	Diamondhead	Adan, Naimo	1.00
ALC/CE Program Coordinator	Community Ed	Jordan, Allison A	1.00
Art Tcr	Burnsville Alternative HS	Braun, Catherine A	1.00
CE Coordinator 3	Hidden Valley Elementary	Dudley, Martha Viczian	0.20
	Sky Oaks Elementary	Konopa, Stacey	0.20
	Wm Byrne Elementary	Kristjanson, Jeanine	0.20
	CE Coordinator I	Rahn Elementary	Berge, Sara K
Community Connections Coord	Community Ed	Daoud, Hamde	0.33
		Ontiveros, Eddieca	0.33
		Romano, Molly E	0.50
Counselor	Burnsville Alternative HS	Sellers, Jason A	0.15
Dir Community Ed	Community Ed	Dimberio, Robbie	0.88
EA Level 3	Burnsville Alternative HS	Bergman, Anna T	0.50
Lang Arts Tcr	Burnsville Alternative HS	Bergman, Anna T	0.50
		Meilleur, Stephanie J	1.00
		Sloneker, Angela	1.00
	Eagle Ridge MS	Anderson, Kristen L	0.50
		Blair, Michael E.	0.50
		Elward, Lucius P	0.50
		Parkinson, Jacquelyn R	0.50
		Abdullahi, Ibrahim H	0.50
		Hansen, William C	0.33
		Orth, Steven D.	0.33
	Nicollet MS	Salad, Hawa D	0.50
		Sorensen, Brad	0.50
		Lesiecki, Krista	0.50
Math Tcr	Burnsville Alternative HS	Lotze, Timothy	1.00
		Mueller, Sarah K	1.00
		Czapar, Ryan J	0.50
	Eagle Ridge MS	Czapar, Ryan J	0.50

Staffing Detail by Budget Unit as of January 03, 2023

	Location Description	Full Name	FTE
Math Tcr	Eagle Ridge MS	Drutowski, Alison	0.50
		Grueneich, Janelle	0.50
		Isaacson, Melissa J	0.50
		Nelson, Michelle L	0.50
	Nicollet MS	Bakeberg, Jessie L	0.50
		Benson, Ross S	0.50
		Funches, Monique Roy	0.66
		Geddes, Richard W	0.33
		Philipsek, Megan K	0.50
		Sticha, Matthew	0.50
Phy Ed Tcr	Burnsville Alternative HS	Morrissey, Kevin P	1.00
Principal	Burnsville Alternative HS	Ronn, Kelly J	0.75
Science Tcr	Burnsville Alternative HS	Engelhardt, Angela C	1.00
		Soderholm, William Eric	1.00
Soc Stu Tcr	Burnsville Alternative HS	Bates, Daniel W	0.10
		Bergman, Anna T	0.50
		Hill, Amy	0.90
		Kirchner, Amy	1.00
Youth Development/ALC Coord	Community Ed	Floback, Courtnee L	0.60
<b>10030 - K-12 Nursing Hlth Serv</b>			
EA Health	Gideon Pond Elementary	Stene, Barbara	0.91
	Harriet Bishop Elementary	Hansen, Sarah J	0.91
Nurse - LPN	Burnsville Alternative HS	Carlisano, Marta L	1.00
Nurse - LSN	Burnsville HS	Beaulieu, Kourtney A	0.64
	District-wide	Bien, Bernadette L	0.60
	Eagle Ridge MS	Eilertson, Jane Ann	0.79
	Gideon Pond Elementary	Cozad, Patricia M	0.21
	Nicollet MS	Mjelleli, Emily L	0.80
	Rahn Elementary	Stinson, Katrina L	0.16
	Sky Oaks Elementary	Cozad, Patricia M	0.33
	Wm Byrne Elementary	Stinson, Katrina L	0.08
	Burnsville HS	Robison, Kim A	0.85
	Hidden Valley Elementary	Dillon, Riley N	1.00
Nurse - RN		Exley, Amanda	0.82
<b>11020 - 9-12 Athletics</b>			
Ace L4 Admin Asst/Specialist	Burnsville HS	Riggs, Jeanine L	1.00
Dir Activities	Burnsville HS	Kleiner, Kevin T	1.00
<b>12010 - F401 Fed Title I</b>			
1st Grade Tcr	Sky Oaks Elementary	Schwingle, Cassie L	1.00
2nd Grade Tcr	Sky Oaks Elementary	Nelson, Brianna J	1.00
4th Grade Tcr	Sky Oaks Elementary	Flom, Megan M	1.00
5th Grade Tcr	Virtual Academy - Elementary	Viktora, Gabrielle E	0.50
	Edward Neill Elementary	Jensen, Jason C	1.00
	Harriet Bishop Elementary	Schwalbe, Heather	1.00
		VanHorn, Alexander W	0.50

Staffing Detail by Budget Unit as of January 03, 2023

	Location Description	Full Name	FTE
<b>5th Grade Tcr</b>	<b>Virtual Academy - Elementary</b>	Viktora, Gabrielle E	0.50
<b>Ace L3 Secretary</b>	<b>Diamondhead</b>	Chamberland, Tausha	1.00
<b>Ace L4 Admin Asst/Specialist</b>	<b>Diamondhead</b>	De Leon, Angel M	0.50
<b>Band Tcr</b>	<b>District-wide</b>	Kessler, Miles	1.00
<b>Counselor</b>	<b>Hidden Valley Elementary</b>	Bodin, Kristin M	1.00
<b>EA L2 Support</b>	<b>Gideon Pond Elementary</b>	Papendick, Sharon L	0.25
	<b>Harriet Bishop Elementary</b>	Smith, Linda M	0.63
	<b>Sky Oaks Elementary</b>	Solomon, Cassidy E	0.13
	<b>Vista View Elementary</b>	Cermak, Barbara L	0.16
		Farah, Saida A	0.31
	<b>Wm Byrne Elementary</b>	Engberg, Denise G	0.41
	<b>Edward Neill Elementary</b>	Kruger, Tara N	0.94
	<b>Gideon Pond Elementary</b>	Abdi, Rahima A	0.50
		Waters, Stacie	0.63
	<b>Harriet Bishop Elementary</b>	Lazenby, Charline N	0.94
<b>EA Level 3</b>		Oshiro, Karen M	0.03
	<b>Rahn Elementary</b>	Gutierrez Beltran, Maria L	0.09
	<b>Sky Oaks Elementary</b>	Abtow, Anab A	0.03
	<b>Virtual Academy - Elementary</b>	Schonewill, Crix L	0.47
	<b>Vista View Elementary</b>	Tillman, Jack R	1.00
	<b>Gideon Pond Elementary</b>	Brace, Roxanna N	1.00
	<b>Hidden Valley Elementary</b>	Krueger, Kaitlynn L	1.00
	<b>Rahn Elementary</b>	Athey, Callie L	0.75
		Stern, Kalley J	1.00
	<b>Hidden Valley Elementary</b>	Baumann, Michelle L	1.00
<b>Learning Specialist</b>	<b>Vista View Elementary</b>	Green, Kerianne Loran	0.63
	<b>Wm Byrne Elementary</b>	Knutson, Christine	1.00
<b>Sisa Coordinator</b>	<b>Diamondhead</b>	Fischer McDonald, Christine	0.80
		Howe, Jaimie K	0.80
<b>Title 1 Tcr</b>	<b>St. John's</b>	Pfeiffer, Donna M	0.40
<b>TOSA</b>	<b>Diamondhead</b>	Gehrke, Andrew R	0.40
<b>12020 - F414 Fed Title II Part A</b>			
<b>Avid Coordinator</b>	<b>Burnsville HS</b>	Christy, Danielle H	0.20
	<b>Eagle Ridge MS</b>	Thomas, Jessica	0.13
	<b>Nicollet MS</b>	Smalley, Amy C	0.13
<b>ESL Coordinator</b>	<b>Diamondhead</b>	OPEN	1.00
<b>Lang Arts Tcr</b>	<b>Burnsville HS</b>	Connell, Paul J	0.20
<b>Sisa Coordinator</b>	<b>Diamondhead</b>	Fischer McDonald, Christine	0.20
		Lowe, Brandon L	1.00
<b>TOSA</b>	<b>Diamondhead</b>	Gehrke, Andrew R	0.60
<b>12030 - F417 Fed Title III</b>			
<b>ESL Coordinator</b>	<b>Diamondhead</b>	Kreie Arago, Maria	0.00
<b>12040 - F433 Fed Title IV-A</b>			
<b>Behavior Analyst</b>	<b>District-wide</b>	Czapar, Kelly N	0.10
		Ewert, Casey B	0.10



Staffing Detail by Budget Unit as of January 03, 2023

	Location Description	Full Name	FTE		
Lang Arts Tcr	Burnsville HS	Connell, Paul J	0.20		
Sisa Coordinator	Diamondhead	Howe, Jaimie K	0.20		
13010 - F335 Pro Pay (QComp)					
Continuous Improvement Coach	District-wide	Bane, Deanna S	1.00		
		Coleman, Colleen M	1.00		
		Hagen, Aimee E	1.00		
		Nemeth, Heather	1.00		
		Ness, Katie L	1.00		
		Niffenegger, Kamala N	1.00		
13020 - Integration Program					
Advanced Learning	Gideon Pond Elementary	Stalock, Sharron C	0.50		
	Wm Byrne Elementary	Stalock, Sharron C	0.50		
Avid Coordinator	Burnsville Alternative HS	Hill, Amy	0.10		
	Burnsville HS	Christy, Danielle H	0.10		
	Eagle Ridge MS	Thomas, Jessica	0.20		
	Nicollet MS	Smalley, Amy C	0.20		
	Cultural Liaison	District-wide	Alcala, Lissette Lizeth	1.00	
Ali, Maryan H			1.00		
Bauer, Andrea C			1.00		
Gaston, Tommie			1.00		
Grant, Heidi A			1.00		
Kaahiye, Axmad			1.00		
Lopez, Mary T			1.00		
Moalim, Shamso A			1.00		
OPEN			2.00		
Osman, Amal M			1.00		
Yasin, Muna I			1.00		
Dir Curriculum & Instruction			Diamondhead	Oftedahl, Imina P	0.25
				Burnsville HS	Hewett, Thomas
			Morrissey, Michelle M		0.65
	Eagle Ridge MS	Poliquin, Anne E	0.65		
	Edward Neill Elementary	Parker, Sarah E	0.65		
	Gideon Pond Elementary	Khalif, Abdullahi M	0.65		
	Harriet Bishop Elementary	Koch, Rebecca M	0.65		
	Hidden Valley Elementary	Gauer-Kloos, Megan	0.65		
	Nicollet MS	Fahey, Kara J	0.65		
		Mains, Kristin E	0.65		
	Rahn Elementary	Keller, Katie	0.65		
	Sky Oaks Elementary	Green, Devon L	0.72		
	Vista View Elementary	Lemke, Emily A	0.65		
	Wm Byrne Elementary	Bruns, Brittany G	0.65		
Specialist of American Indian	District-wide	Mousseau, Rebecca J	1.00		
13030 - Compensatory Ed					
6th Grade Tcr	Eagle Ridge MS	Flynn, Catherine	0.33		
		Lewandowski, Megan J	0.17		

Staffing Detail by Budget Unit as of January 03, 2023

	Location Description	Full Name	FTE
<b>6th Grade Tcr</b>	<b>Nicollet MS</b>	Peterson, Christine K	0.83
<b>Advanced Learning</b>	<b>Harriet Bishop Elementary</b>	Huber, Erin	0.50
	<b>Hidden Valley Elementary</b>	Huber, Erin	0.50
	<b>Rahn Elementary</b>	Podratz, Anne Marie	0.50
	<b>Vista View Elementary</b>	Podratz, Anne Marie	0.50
<b>Avid Tcr</b>	<b>Burnsville HS</b>	Christy, Danielle H	0.50
		Deutsch, Matt R	0.20
		Hansen, Marie C	0.20
		Johnson, Cory Charles	0.20
		McDevitt, Paul David	0.20
		Millea, Allison B	0.20
		Simmons, Sean D	0.20
		Waller, Jennifer	0.20
<b>Continuous Improvement Coach</b>	<b>District-wide</b>	Barnes, Monet M	1.00
		Skoglund, Allison L	1.00
<b>Counselor</b>	<b>Burnsville Alternative HS</b>	Maidment, Lori	0.20
		Romano, Molly E	0.50
<b>Interventionist</b>	<b>Burnsville Alternative HS</b>	Maidment, Lori	0.80
<b>Lang Arts Tcr</b>	<b>Nicollet MS</b>	Smolke, Angela S	0.67
	<b>Virtual Academy Secondary</b>	Orth, Steven D.	0.17
		Thomas, Jessica	0.16
<b>Math Tcr</b>	<b>Burnsville HS</b>	Banitt, Justin	0.20
		Harrod, Kim	0.20
		Vogt, Kendra M	0.20
	<b>Virtual Academy Secondary</b>	Goff, Tara P	0.17
<b>Reading Tcr</b>	<b>Burnsville HS</b>	Holcombe, Sara J	0.20
<b>Science Tcr</b>	<b>Burnsville HS</b>	Holt, Clayton B	0.10
		Huemoeller, Michael T	0.20
<b>14010 - Tech General</b>			
<b>Digital Learning Specialist</b>	<b>Edward Neill Elementary</b>	Anderson, Bjorn Rs	0.67
	<b>Gideon Pond Elementary</b>	Knudsen, Julie A	0.75
	<b>Harriet Bishop Elementary</b>	Risteau, Joseph S	1.00
	<b>Hidden Valley Elementary</b>	Grundstrom, Katie M	1.00
	<b>Rahn Elementary</b>	Miller, Kaycie R	0.75
	<b>Sky Oaks Elementary</b>	Christen, Lisa K.	1.00
	<b>Virtual Academy - Elementary</b>	Knudsen, Julie A	0.25
	<b>Vista View Elementary</b>	Anderson, Bjorn Rs	0.33
		Miller, Kaycie R	0.25
	<b>Wm Byrne Elementary</b>	Abrahamson, Jonathan	1.00
<b>14020 - Tech Capital Projects</b>			
<b>Ace L4 Admin Asst/Specialist</b>	<b>Diamondhead</b>	Lallier, Britney	1.00
<b>Digital Learning Specialist</b>	<b>District-wide</b>	Salmela, Kathryn	1.00
<b>Dir Technology</b>	<b>Diamondhead</b>	Gorton, Rachel	1.00
<b>Tech Spec 1</b>	<b>Diamondhead</b>	Abdiwahab, Mohamed S	1.00
		Meyer, Jessica M	1.00
		Music, Tyler L	1.00

Staffing Detail by Budget Unit as of January 03, 2023

	Location Description	Full Name	FTE
<b>Tech Spec 1</b>	<b>Diamondhead</b>	Stalock, Andrew R	1.00
<b>Tech Spec 2</b>	<b>Diamondhead</b>	Lund, Elliott J	1.00
		Rethlake-homolka, Pam	1.00
		Thomas, John S	1.00
		Webster, James A	1.00
<b>Tech Spec 3</b>	<b>Diamondhead</b>	Kopp, Elizabeth A	1.00
		Lund, Tim J	1.00
<b>Tech Spec 4</b>	<b>Diamondhead</b>	Weiler, Bob M	1.00
		Wolke, Drew D	1.00
<b>15010 - Prog Development</b>			
<b>Ace L4 Admin Asst/Specialist</b>	<b>Diamondhead</b>	De Leon, Angel M	0.50
<b>15020 - Curriculum</b>			
<b>Dir Curriculum &amp; Instruction</b>	<b>Diamondhead</b>	Oftedahl, Imina P	0.75
<b>Sisa Coordinator</b>	<b>Diamondhead</b>	Lucius, Rachel H	1.00
<b>16010 - Board of Education</b>			
<b>School Board</b>	<b>District-wide</b>	Conner, Antoinette	1.00
		Miller, Eric Charles	1.00
		Mursal, Safio D	1.00
<b>School Board - Chair</b>	<b>District-wide</b>	Chester, Lesley A	1.00
<b>School Board - Clerk</b>	<b>District-wide</b>	Alt, Abigail	1.00
<b>School Board - Treasurer</b>	<b>District-wide</b>	Werb, Anna J	1.00
<b>School Board - Vice Chair</b>	<b>District-wide</b>	Hume, Michael S	1.00
<b>16020 - Superintendent</b>			
<b>Exec Admin Assistant</b>	<b>Diamondhead</b>	Kenney, Jami M	1.00
<b>Superintendent</b>	<b>Diamondhead</b>	Battle, Theresa F	1.00
<b>16030 - Assist Superintendent</b>			
<b>Ace L4 Admin Asst/Specialist</b>	<b>Diamondhead</b>	Mitsch, Kelli L	0.50
<b>Asst Superintendent</b>	<b>Diamondhead</b>	Bellmont, Chris	1.00
<b>16040 - Human Resources</b>			
<b>Dir Human Resources</b>	<b>Diamondhead</b>	Sovine, Stacey	1.00
<b>Hr Benefits Specialist</b>	<b>Diamondhead</b>	Olson, Ariel R	1.00
<b>Hr Coord</b>	<b>Diamondhead</b>	Busker, Hailey M	1.00
<b>Hr Employment Specialist</b>	<b>Diamondhead</b>	Kacmarynski, Kristine	1.00
<b>Hr Labor Relations Mgr</b>	<b>Diamondhead</b>	Demuth, Joy S	1.00
<b>16050 - Business Services</b>			
<b>Ace L4 Admin Asst/Specialist</b>	<b>Diamondhead</b>	Mitsch, Kelli L	0.50
<b>16051 - Accounting &amp; Finance</b>			
<b>Accounting &amp; Compliance Coord</b>	<b>Diamondhead</b>	Leake, Jarrod S	1.00
<b>Ace L4 Admin Asst/Specialist</b>	<b>Diamondhead</b>	Kaisershot, Stacy L	1.00
		Wilson, Michele L	1.00

Staffing Detail by Budget Unit as of January 03, 2023

	Location Description	Full Name	FTE
<b>Ace L4 Admin Asst/Specialist</b>	<b>Diamondhead</b>	Zellmer, Julie A	1.00
<b>Dir Finance</b>	<b>Diamondhead</b>	Dehne, Tyler	1.00
<b>Financial Controller</b>	<b>Diamondhead</b>	Baker, Jack T	1.00
<b>Pyrl Supervisor</b>	<b>Diamondhead</b>	Robasse, Christine M	1.00
<b>16060 - Marketing Communications</b>			
<b>Communications Coordinator</b>	<b>Diamondhead</b>	Steichen, Matthew J	1.00
<b>Communications Specialist</b>	<b>Diamondhead</b>	Lake, Lisa L	1.00
<b>Dir Communications</b>	<b>Diamondhead</b>	Tinklenberg, Aaron D	1.00
<b>16070 - Student Registration</b>			
<b>Ace L3 Secretary</b>	<b>Diamondhead</b>	Carrillo Martinez, Angelica	1.00
		Kaiser, Tanya J	1.00
<b>Ace L4 Admin Asst/Specialist</b>	<b>Diamondhead</b>	Odowa, Huda Y	1.00
<b>Student Systems Coordinator</b>	<b>Diamondhead</b>	Petroskey, Kellie A	1.00
<b>17010 - VOLUNTARY PRE-SCHOOL</b>			
<b>CE Coordinator 2</b>	<b>Diamondhead</b>	Cherne, Lori M	1.00
		Milinson, Tracy	1.00
	<b>Edward Neill Elementary</b>	Hirani, Misbah M	1.00
	<b>Gideon Pond Elementary</b>	Smith-Lossiah, Sharon Kay	1.00
	<b>Harriet Bishop Elementary</b>	Derusha, Jessalynn	0.50
		Fandrich, Kari M	1.00
	<b>Hidden Valley Elementary</b>	Rivers, Jessica L	1.00
		Tusa, Angela M	1.00
	<b>Rahn Elementary</b>	Watson, Melissa A	1.00
	<b>Sky Oaks Elementary</b>	Santos, Miya D	1.00
		Vogt, Kathrine M	1.00
	<b>Vista View Elementary</b>	Rottjakob, Ronda K	1.00
	<b>Wm Byrne Elementary</b>	Hanson, Virginia A	1.00
<b>CE Program Supervisor</b>	<b>Community Ed</b>	Abraha, Wubet A	0.75
		Ali, Faduma	1.00
		Coulter, Elizabeth E	1.00
		Monnens, Selena	0.88
		Patricio, Angelie A	1.00
	<b>District-wide</b>	Hassan, Hamza A	0.44
	<b>Gideon Pond Elementary</b>	Yusuf, Ubah	0.88
	<b>Harriet Bishop Elementary</b>	Sanborn, Nicholas	0.19
	<b>Hidden Valley Elementary</b>	Rush, Diane	1.00
	<b>Rahn Elementary</b>	Burkart, Paula J	0.88
	<b>Wm Byrne Elementary</b>	Kaplan, Emma A	1.00
<b>Dir Community Ed</b>	<b>Community Ed</b>	Sellers, Jason A	0.05
<b>Early Learning Coordinator</b>	<b>Community Ed</b>	Sampers, Cynthia	0.30
<b>Sped Supervisor</b>	<b>Diamondhead</b>	Cherry, Carolyn J	0.15
<b>17011 - Elem Bldg Administrators</b>			
<b>Principal</b>	<b>Edward Neill Elementary</b>	Bomsta, Lyle J	1.00
	<b>Gideon Pond Elementary</b>	Hussein, Salma	1.00

Staffing Detail by Budget Unit as of January 03, 2023

	Location Description	Full Name	FTE
Principal	Harriet Bishop Elementary	Essay, Kenneth P	1.00
	Hidden Valley Elementary	Black, Kristine C	1.00
	Rahn Elementary	Robb, Brad E	1.00
	Sky Oaks Elementary	Brandner, Renee	1.00
	Virtual Academy - Elementary	Pohl, Angie J	0.25
	Vista View Elementary	Pohl, Angie J	0.75
	Wm Byrne Elementary	Bonneville, Jon G	1.00
17012 - Elem Bldg Clerical			
Ace L3 Secretary	Hidden Valley Elementary	Najera Vazquez, Martha E	1.00
Ace L4 Admin Asst/Specialist	Edward Neill Elementary	Stickle, Carolyn E	1.00
	Gideon Pond Elementary	Olsen-Dickhausen, Sarah J	1.00
	Harriet Bishop Elementary	Hinman, Jennifer J	1.00
	Hidden Valley Elementary	Hreha, Kyle J	1.00
	Rahn Elementary	Crosbie, Cindy	1.00
	Sky Oaks Elementary	Halvorson Peralta, Nancy E	1.00
	Vista View Elementary	Berra, Angie Marie	1.00
	Wm Byrne Elementary	Mcclellan, Melissa E	1.00
17013 - Elem Bldg Ed Assistants			
EA L2 Support	Edward Neill Elementary	Polding, Molly A	0.47
		Rosenberger, Rose M	0.88
	Gideon Pond Elementary	Abdi, Rahima A	0.50
		Butorac, Melanie A	0.25
		Kump, Jolene	1.00
	Harriet Bishop Elementary	Becker, Sarah J	0.19
		Liyanage, Melanie	0.69
		Mcconnell, Diane	0.50
	Hidden Valley Elementary	Ali, Fartun A	0.41
		Dracheva, Darya V	0.38
		Gillies, Heidi D	0.41
	Rahn Elementary	Christman, Amber S	0.31
		Kato, Nojelyn L	1.00
		Mosley, Julie G	1.00
	Sky Oaks Elementary	Berge, Kristy K	0.41
		Haroon, Hajir S	0.63
		OPEN	1.81
	Vista View Elementary	Solomon, Cassidy E	0.19
		Yusuf, Kali M	1.00
		Cermak, Barbara L	0.25
	Wm Byrne Elementary	Geedi, Ayaan M	0.69
		Gilbertson, Sherry A	0.69
		Cull, Margaret R	0.91
		Duran, Lindsey M	0.38
		OPEN	1.81
	Vervais, Elizabeth	0.31	
17021 - Sec Bldg Administrators			

Staffing Detail by Budget Unit as of January 03, 2023

	Location Description	Full Name	FTE
<b>Dean</b>	<b>Burnsville HS</b>	Magee, Brenten C	1.00
		Wilson, Catima	1.00
<b>Principal</b>	<b>Burnsville HS</b>	Sommers, William A	1.00
	<b>Eagle Ridge MS</b>	Helke, David M	1.00
	<b>Nicollet MS</b>	Becquer, Frances	1.00
	<b>Virtual Academy Secondary</b>	Ronn, Kelly J	0.25
<b>Principal Asst</b>	<b>Burnsville HS</b>	Blaylark, Eddie D	1.00
		Braspenick, Cherie	1.00
		Heim, Bill V	1.00
		Noble, Sarah J	1.00
	<b>Eagle Ridge MS</b>	Bohr, Jennifer L	1.00
	<b>Nicollet MS</b>	Lepper, Jay C	1.00
<b>17022 - Sec Bldg Clerical</b>			
<b>Ace L3 Secretary</b>	<b>Burnsville HS</b>	Funk, Ann E	1.00
		Moberg, Carlene	1.00
		Plomski, Marci	1.00
		Salinas, Myra A	1.00
		Scherer, Deb M	1.00
		Thornton, Jenifer A	1.00
	<b>Eagle Ridge MS</b>	Evans-Vorhies, Maryann C	1.00
		Felton, Michelle M.	1.00
	<b>Nicollet MS</b>	Olson, Diane B	1.00
		Paul, Tara	1.00
<b>Ace L4 Admin Asst/Specialist</b>	<b>Burnsville HS</b>	Cenci, Barbara	1.00
		Ebel, Krystel A	1.00
	<b>Eagle Ridge MS</b>	Scalzo, Kristin	1.00
	<b>Nicollet MS</b>	O'Hara Stuart, Erin	1.00
<b>Registrar</b>	<b>Burnsville HS</b>	Westerlund, Danette R	1.00
<b>17023 - Sec Bldg Ed Assistants</b>			
<b>EA L2 Support</b>	<b>Eagle Ridge MS</b>	Martineau, Christian R	1.00
<b>EA Level 3</b>	<b>Virtual Academy Secondary</b>	Schonewill, Crix L	0.47
<b>17027 - DEC Clerical</b>			
<b>Ace L2 Clerk</b>	<b>Diamondhead</b>	Lau, Guek Yong	1.00
<b>19010 - OP Custodial</b>			
<b>Custodian - Level 1</b>	<b>Burnsville HS</b>	Davis, Kyle	1.00
		Jacobson, Michael J	1.00
		Jimenez, David M	1.00
		Linder, Anthony J	1.00
		Martinez, Annette	1.00
		Mcdonald, David	1.00
		Molina, Luis A	1.00
		Orellana, Laura I	1.00
		Schwanke, Craig A	1.00
		Toeller, John F.	1.00

Staffing Detail by Budget Unit as of January 03, 2023

	Location Description	Full Name	FTE
	Burnsville HS	Wick, Darryl	1.00
	Diamondhead	Abbott, Mark M	1.00
		Alvarado Robles, Luis	1.00
		Dotzler, Brenda L	1.00
		Graupmann, David A	1.00
	District-wide	Molina, Julio C	1.00
	Eagle Ridge MS	Arreola, Bertha A	1.00
		Leon, Steven F	1.00
		Ly, Ty V	1.00
		Sahli, Teresea	1.00
	ECSE	James, Marcus C	0.50
		Lopez, Joseph D	1.00
		Molina Urgiles, David	0.50
	Edward Neill Elementary	Alvarado, Mary	1.00
		Amos, Susan K	0.50
		Molina, Angel	0.50
	Gideon Pond Elementary	Fitzgerald, Elizabeth	1.00
		Molina, Alfonso A	0.50
		Ohlhauser, Connor C	0.50
	Harriet Bishop Elementary	Robasse, Charles W	1.00
		Spencer, Tandelyn T	1.00
	Hidden Valley Elementary	Alvarado, Ernesto	1.00
		Sullivan, Geraldine E	1.00
	Nicollet MS	Kiehn, Jean M	1.00
		Mathys, Frederic G	1.00
		O'leary, Daniel L	1.00
	Rahn Elementary	Molina, Alfonso A	0.50
		Needham, Timothy	1.00
		Ohlhauser, Connor C	0.50
	Sky Oaks Elementary	Kinyon, Terry R	1.00
	Vista View Elementary	Amos, Susan K	0.50
		Molina, Angel	0.50
		Morales, Manuela	1.00
	Wm Byrne Elementary	James, Marcus C	0.50
		Molina Urgiles, David	0.50
Custodian - Level 2	Burnsville HS	Gibbons, Patrick M	1.00
		Gorzycki, Mark	1.00
		Lundberg-Schmidt, Pamela M	1.00
		Mauser, Benjamin	1.00
		Wendorf, Eric S	1.00
	District-wide	Davila, Guillermo D	1.00
		Johnson, Mark E	1.00
		Johnson, Michael A	1.00
		Vertein, James	1.00
		Wollersheim, Christian P	1.00
	Eagle Ridge MS	Johnson, Nicholas A	1.00
	Nicollet MS	Teske, Jeffrey J	1.00
Custodian - Level 3	Burnsville HS	Morgan, Julie C	1.00

Staffing Detail by Budget Unit as of January 03, 2023

	Location Description	Full Name	FTE
<b>Custodian - Level 3</b>	<b>Burnsville HS</b>	Sahli, Jonathan C	1.00
	<b>Diamondhead</b>	Glende, Mark	1.00
		Thurber, Laurie	1.00
	<b>Eagle Ridge MS</b>	Johnson, Glenn A.	1.00
	<b>ECSE</b>	Dykstra, Bryan G.	1.00
	<b>Edward Neill Elementary</b>	Reimers, James F	1.00
	<b>Harriet Bishop Elementary</b>	Martinez, Robert V	1.00
	<b>Hidden Valley Elementary</b>	Nelson, Kirk A	1.00
	<b>Metcalf MS</b>	Johnson, Brian J	1.00
	<b>Nicollet MS</b>	Schmidt, Brent G	1.00
	<b>Rahn Elementary</b>	Jensen, Bryan J	1.00
	<b>Sky Oaks Elementary</b>	Kaisershot, Troy M	1.00
	<b>Vista View Elementary</b>	Gomez, Oscar A	1.00
	<b>Wm Byrne Elementary</b>	Sather, Derek D	1.00
<b>Dir Operations</b>	<b>Diamondhead</b>	Lake, David	0.40
<b>Ops Supervisor</b>	<b>District-wide</b>	Henderson, Sean M	1.00
		OPEN	1.00
		Wolfram, Michael	1.00
<b>19020 - OP Bldg Main &amp; Grounds</b>			
<b>Custodian - Level 2</b>	<b>District-wide</b>	Anderson, John Charles	1.00
		Chantara, Thomas Khamsing	0.50
<b>Custodian - Level 4</b>	<b>District-wide</b>	Alvarado, Angel	1.00
		Gilbertson, Dale	1.00
<b>19030 - H &amp; S/ADA Compliance</b>			
<b>Ace L4 Admin Asst/Specialist</b>	<b>Diamondhead</b>	Maro, Julie A	1.00
<b>Dir Operations</b>	<b>Diamondhead</b>	Lake, David	0.60
<b>Ops Supervisor</b>	<b>District-wide</b>	Powers, Scott D	1.00
<b>19041 - Facilities Rental</b>			
<b>Facilities Coordinator</b>	<b>Diamondhead</b>	Hinrichsen, Kyle	0.89
<b>19050 - Purchasing/Warehouse</b>			
<b>Custodian - Level 2</b>	<b>District-wide</b>	Chantara, Thomas Khamsing	0.50
<b>Custodian - Level 4</b>	<b>District-wide</b>	Hadac, William	1.00
<b>20030 - Campus Secur Personnel</b>			
<b>Facilities Coordinator</b>	<b>Diamondhead</b>	Hinrichsen, Kyle	0.11
<b>21000 - Current Grants</b>			
<b>ESL Tcr</b>	<b>Burnsville HS</b>	Parent, Andrea J	0.20
<b>Facs Tcr</b>	<b>Burnsville HS</b>	Deutsch, Matt R	0.20
<b>TOSA</b>	<b>Burnsville HS</b>	Akerson, Rebecca D	1.00
	<b>Diamondhead</b>	McDowell, Morgan	0.74
<b>21100 - Emergency Relief Aid</b>			
<b>Ace L4 Admin Asst/Specialist</b>	<b>Diamondhead</b>	Schonewill, Jamie	1.00



Staffing Detail by Budget Unit as of January 03, 2023

	Location Description	Full Name	FTE
Behavior Analyst	Nicollet MS	Milligan, Anna	1.00
CE Social Services Specialist	Community Ed	Wild, Priscila C	1.00
Cultural Liaison	District-wide	Abdullahi, Sahro	1.00
		Ruiz, Cynthia	1.00
EA Level 3	Edward Neill Elementary	Ali, Nasteho M	0.91
	Gideon Pond Elementary	Hussein, Sofia Y	0.91
	Harriet Bishop Elementary	Oshiro, Karen M	0.91
	Hidden Valley Elementary	Lopez, Janet	0.91
	Rahn Elementary	Gutierrez Beltran, Maria L	0.91
	Sky Oaks Elementary	Abtow, Anab A	0.91
	Vista View Elementary	Colareta, Karina G	0.91
	Wm Byrne Elementary	Johnson, Megann M	0.91
		OPEN	0.91
Interventionist	Burnsville HS	Shimshock, Erik A	0.80
	Eagle Ridge MS	OPEN	1.00
Lang Arts Tcr	Burnsville HS	Burnham, Charles F	0.80
	Virtual Academy Secondary	Burke, Katie J	0.20
		Burnham, Charles F	0.20
Math Tcr	Burnsville HS	Alt, Brett	1.00
		Lesiecki, Krista	0.50
		Vogt, Kendra M	0.50
	Eagle Ridge MS	Schmidt-boyles, Dawn	1.00
	Nicollet MS	Hoge, Brittney	1.00
	Virtual Academy Secondary	Banitt, Justin	0.20
		Goff, Tara P	0.33
Science Tcr	Burnsville HS	Burns, Margaret A	0.30
	Virtual Academy Secondary	Holt, Clayton B	0.20
		Huber, Jon Alan	0.20
		Lundahl, Timothy	0.17
Soc Stu Tcr	Burnsville HS	Amegbleame, Coudjo	1.00
		Eppen, Matthew W	0.10
		VanSchoonhoven, Katherine	0.20
		Wendling, Kathryn	0.10
	Virtual Academy Secondary	Bousu, Mollie J	0.20
		Moffitt, Leslie Allan	0.20
		Wendling, Kathryn	0.10
Student Svcs Acct Specialist	Diamondhead	OPEN	1.00
Tech Spec 1	Diamondhead	Tarnofsky, John J	1.00

Staff Salary and Benefits by Bargaining Group

General Fund Bargaining Group	Sum of FTE (Full-Time Equivalent)	Sum of Salary	Sum of Benefits	Total Salary + Benefits	% of Total
Clerical	43.00	\$ 2,133,901	\$ 904,944	\$ 3,038,845	3.04%
Confidential	5.00	\$ 410,904	\$ 171,259	\$ 582,163	0.58%
Custodial	70.33	\$ 3,755,125	\$ 1,467,199	\$ 5,222,324	5.22%
District Wide	8.85	\$ 1,152,581	\$ 373,751	\$ 1,526,332	1.53%
Educational Asst	168.01	\$ 4,837,695	\$ 2,946,173	\$ 7,783,868	7.78%
Info Tech Specialists	13.00	\$ 785,934	\$ 351,642	\$ 1,137,576	1.14%
Operations	4.00	\$ 264,823	\$ 103,687	\$ 368,510	0.37%
Principals	18.00	\$ 2,582,921	\$ 908,063	\$ 3,490,984	3.49%
Superintendent	1.00	\$ 201,800	\$ 63,182	\$ 264,982	0.26%
Teachers	612.33	\$ 48,683,782	\$ 20,831,637	\$ 69,515,419	69.50%
Unaffiliated	59.03	\$ 3,962,110	\$ 1,701,457	\$ 5,663,567	5.66%
VPK / CE	23.19	\$ 1,061,041	\$ 364,979	\$ 1,426,020	1.43%
<b>Grand Total</b>	<b>1,025.74</b>	<b>\$ 69,832,617</b>	<b>\$ 30,187,973</b>	<b>\$ 100,020,590</b>	<b>100%</b>

## **Burnsville-Eagan-Savage District #191 Bargaining Unit Descriptions**

Below are definitions of the categories from which all of our Human Resource Assignments within the General Fund are derived. Close to 80% of the total general fund budget is made up of Salary and Benefits, including hourly assignments, from these groups within the General Fund.

**Clerical** refer to positions that fall under the **Association of Clerical Employees** collective bargaining agreement which are expected to complete clerical tasks as assigned.

**"Confidential employee"** means an employee who as part of the employee's job duties: (1) is required to access and use labor relations information as that term is defined in section [13.37, subdivision 1](#), paragraph (c) *"Labor relations information" means management positions on economic and noneconomic items that have not been presented during the collective bargaining process or interest arbitration, including information specifically collected or created to prepare the management position.*"; or  
(2) actively participates in the meeting and negotiating on behalf of the public employer.

**Custodial** refer to positions that fall under the **Service Employees International Union Local 284 - Custodial Employees** which are expected to complete custodial tasks as assigned.

**District Wide - Districtwide Administrators Association** includes the following positions whose roles vary depending upon their job description (note some of these positions are funded outside of the General Fund yet are included within this category) :

- Director of Curriculum, Instruction, and Student Support Services
- Director of Individualized Student Services
- Director of Operations, Properties, and Transportation
- Director of Community Education (funded by Fund 04)
- Director of Strategic Partnerships and Pathways
- Director of Activities and Athletics
- Director of Food Services (funded by Fund 02)
- Special Education Supervisor(s)
- Adult Basic Education Coordinator (funded by Fund 04)

**Educational Asst** - refer to positions that fall under the **Burnsville Association of Educational Assistants** collective bargaining agreement which are expected to complete tasks as assigned in the areas of support, health, media and special education.

**Info Tech Specialists** - refer to positions that fall under the **Information Technology Specialists** collective bargaining agreement which are expected to complete tasks as assigned to either level of Tech Spec 1, 2, 3, or 4.

**Operations Supervisors** - refer to positions that fall under the **Operations and Maintenance Supervisors** collective bargaining agreement which are expected to complete tasks as assigned for Operations Supervisors.

**Principals** - refer to positions that fall under the **Burnsville Principals Association** collective bargaining agreement which are expected to complete tasks as assigned for their assigned level of either Associate or Principal at Elementary, Middle or Senior High levels.

**School Board** - elected officials comprising the **ISD 191 School Board of Directors**.

**Superintendent** - Individual who leads ISD 191 as per job description and contract with School Board.

**Teachers** - refer to positions that fall under the **Burnsville Education Association** collective bargaining agreement which are expected to complete tasks as assigned for their position as a licensed teaching personnel as defined in the Public Employment Labor Relations Act (PELRA).

**Unaffiliated Employees** are positions that do not have a "Community of Interest" with established bargaining units within the district. These positions are At-Will and fall under Terms and Conditions of Employment verses a negotiated agreement.

Revised 3/5/2021

# General Fund Budget Comparative Summary

	Actual Results 2020-21	Actual Results 2021-22	Adopted Budget 2022-23	Revised Budget 2022-23
<b>Total Beginning Fund Balance</b>	<b>\$ 20,326,027</b>	<b>\$ 29,521,880</b>	<b>\$ 29,371,898</b>	<b>\$ 32,521,899</b>
<b>Revenues</b>	<b>129,973,192</b>	<b>126,974,994</b>	<b>125,658,061</b>	<b>127,778,817</b>
Federal Relief Revenues for current costs	4,673,195	3,902,488	3,400,000	4,027,847
Federal Relief Revenues for new costs		5,443,165	6,270,499	5,949,046
<b>Expenditures</b>	<b>120,777,339</b>	<b>127,877,463</b>	<b>130,869,041</b>	<b>131,854,440</b>
Federal Relief Expenditures for new costs	4,673,195	5,443,165	6,270,499	5,949,046
<b>Variance (Revenues - Expenditures)</b>	<b>9,195,853</b>	<b>3,000,019</b>	<b>(1,810,980)</b>	<b>(47,776)</b>
<b>Total Ending Fund Balance</b>	<b>\$ 29,521,880</b>	<b>\$ 32,521,899</b>	<b>\$ 27,560,918</b>	<b>\$ 32,474,123</b>
<b>Breakdown of Fund Balance Categories</b>				
Nonspendable	\$ 382,338	\$ 254,436	\$ 382,338	\$ 254,436
Restricted	9,020,782	9,841,889	8,637,897	10,819,678
Committed	1,849,491	1,837,017	1,168,634	1,394,580
Assigned	5,081,823	1,810,980	-	-
Unassigned	13,187,446	18,777,577	17,372,049	20,005,429
<b>Total Ending Fund Balance</b>	<b>\$ 29,521,880</b>	<b>\$ 32,521,899</b>	<b>\$ 27,560,918</b>	<b>\$ 32,474,123</b>
<b>Unassigned Fund Balance %</b>	<b>10.51%</b>	<b>14.08%</b>	<b>12.67%</b>	<b>14.52%</b>