

*Colin Kirkpatrick's*

## NATIONAL ANTHEMS EXPRESS

### REPUBLIC OF KOREA: Aegukga

This is an arrangement for virtually any combination of wind or stringed instruments. This book contains a three-page (ten-staff) score, plus separate instrumental parts in different transpositions, including timpani, percussion and piano reduction.



GLYN JOSEPH EDITIONS

*Colin Kirkpatrick's*

## NATIONAL ANTHEMS EXPRESS

Thank you for purchasing this national anthem arrangement. It's designed primarily for bands but can also be used with many different instrumental combinations. The arrangement is in six independent parts, so for the most satisfying sound you'll need to get a good balance between each part possibly with an emphasis on the melodic line. The parts are in different transpositions so that you can "pick 'n' mix" as required. The piano reduction can "fill" missing parts or can be used as the basis for an accompaniment.

If the arrangement were played exactly as written, every instrument would be playing continuously. While it is possible to perform the anthem in this way, you may prefer to exercise some personal control by creating *tacet* sections. This can be achieved simply by marking the individual parts and deleting appropriate passages. Feel free to adapt the instrumentation to your own needs.

Many anthems exist in slightly different versions. If you are unfamiliar with the performance conventions of a particular anthem it's *essential* to check with local expertise about the preferred performance style. Sometimes pauses are placed at certain points; sometimes the last few measures are played at a distinctly slower tempo; sometimes repeats are played. So please check carefully.

The music is presented in pdf files at 1,200 dpi which can produce professional-looking printed copies on US letter-size paper. However, the output quality will also depend upon your own printer settings and capabilities.

---

*Colin Kirkpatrick studied at London's Royal College of Music and followed a career in music education. He was a High School Music Director for about fifteen years and later became a Music Education Adviser, with the added responsibility for training teachers and directing the instrumental teaching service.*

*He has published a great deal of music and his publishers include Boosey & Hawkes, Novello, Paxton, Schott, Oxford University Press, Chester, Belwin Mills and Intrada (Netherlands). His music has been performed and broadcast all over Europe as well as in Japan, Thailand, Australia and the USA. He holds MA and PhD degrees.*

---

GLYN JOSEPH EDITIONS

[glyn-joseph-editions@colin-kirkpatrick.com](mailto:glyn-joseph-editions@colin-kirkpatrick.com)

# REPUBLIC OF KOREA (South Korea): Aegukga

*This list shows the various parts and the instruments to which they are best suited.*

## PART 1 (Melody):

Part 1 in B flat	clarinet, trumpet, cornet, flugelhorn, soprano sax
Part 1 in C	piccolo, violin, glockenspiel
Part 1 in E flat	alto saxophone, E flat clarinet
Part 1a in C **	(8ve higher) flute, oboe, violin
Part 1a in E flat	E flat cornet (minor 3rd lower)

## PART 2:

Part 2 in B flat	clarinet, trumpet, cornet, flugelhorn, soprano sax
Part 2 in C	violin
Part 2 in E flat	alto saxophone, alto clarinet
Part 2a in C **	(8ve higher) flute, oboe
Part 2a in E flat	(minor 3rd lower) E flat alto clarinet

*\*\*If there are sufficient instrumentalists, you can create a high woodwind tone above the melody by using Part 1a in C and Part 2a in C. These parts are provided only in anthems where the comparatively low range of the melody makes this possible.*

## PART 3:

Part 3 in B flat	tenor saxophone, B flat baritone
Part 3 in C (bass clef)	trombone, bassoon
Part 3 in C alto (alto clef)	viola
Part 3 in E flat	tenor horns, alto saxophone
Part 3 in F	French horn
Part 3a in B flat	(8ve lower) clarinet (3rd clarinets in band)

## PART 4:

Part 4 in B flat	tenor saxophone, baritone, euphonium
Part 4 in C (bass clef)	trombone, bassoon, cello
Part 4 in E flat	tenor horn, alto saxophone
Part 4 in F	French horn

## PART 5:

Part 5 in B flat	baritone, euphonium
Part 5 in C (bass clef)	trombone, bassoon

## PART 6:

Part 6 in B flat	B flat bass, bass clarinet
Part 6 in C (bass clef)	bass trombone, bassoon, contrabassoon, tuba
Part 6 in E flat	E flat bass, baritone saxophone

*Feel free to experiment with your own distribution of the parts. Please note that Part 5 is not harmonically essential to the ensemble, but it adds richness if you have enough low pitched instruments. The arrangement also includes timpani and a percussion part that requires three players: snare drum, bass drum and cymbals.*

REPUBLIC OF KOREA (South Korea): *Aegukga*

*Aegukga* literally means "The Song of Love for the Country" or "Patriotic Song". The words were probably written around the turn of the twentieth century and over the years, they were revised by various leaders evolving into what is sung today. Initially, they were sung to the tune of the Scottish folk song *Auld Lang Syne*, introduced to Korea by American missionaries. In August 1948, a Presidential Decree finally replaced the Scottish tune with a melody from the Finale of *Korea Fantasia* by the distinguished Korean classical composer Ahn Eak-tai.

Ahn Eak-tai studied music in Japan, America and Europe and had a distinguished career which included conducting some of the leading European orchestras. He died in Mallorca in 1965 where he had spent the previous twenty years. Under normal circumstances, this music would still be in copyright. However, on 16th March 2005, the composer's widow Lolita Ahn and her family relinquished all rights of *Aegukga* to the South Korean government, bringing the national anthem into the public domain. The first four bars form an instrumental introduction and the anthem proper begins at the fifth bar. There are four verses, but they are not always performed.

Music: Ahn Eak-tai (1906-1965)

Arranged by Colin Kirkpatrick

♩ = 88    *Introduction*

Part 1 *mf* *f*

Part 2 *mf* *f*

Part 3 *mf* *f*

Part 4 *mf* *f*

Part 5 *mf* *f*

Part 6 *mf* *f*

Timpani *mf* *f*

Cymbals *mf* *f*

Snare Drum *mf* *f*

Bass Drum *mf* *f*

*In A flat, B flat and E flat.*

If you perform this arrangement in public, make a recording or broadcast it through any media, please notify the PRS (UK), or ASCAP (USA), or SOCAN (Canada), or APRA (Australia) or KOMCA (Korea) or the equivalent organisation in your own country, giving the name of the arranger as Colin Kirkpatrick.

This arrangement © Colin Kirkpatrick 2009.

1.

Sheet Music Plus Order 2461616724. 1 copy purchased by tocc82@hotmail.com on Jan 9, 2019.

Colin Kirkpatrick's  
NATIONAL ANTHEMS EXPRESS

PART 1 IN B FLAT

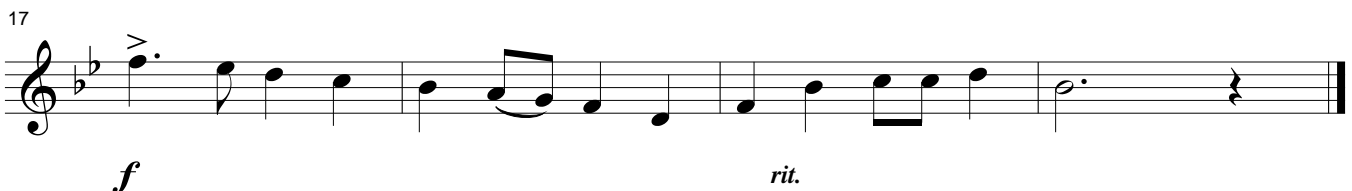
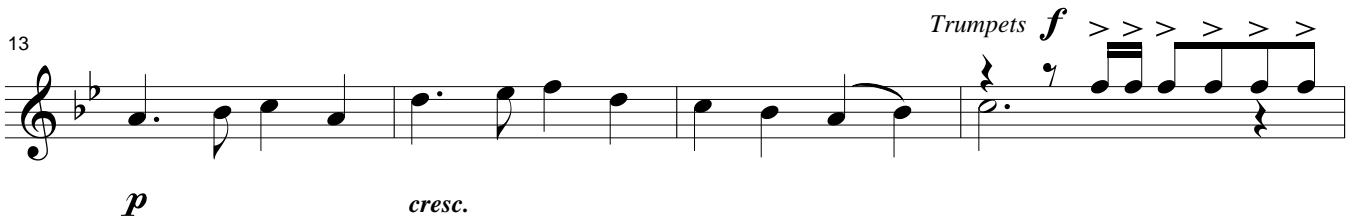
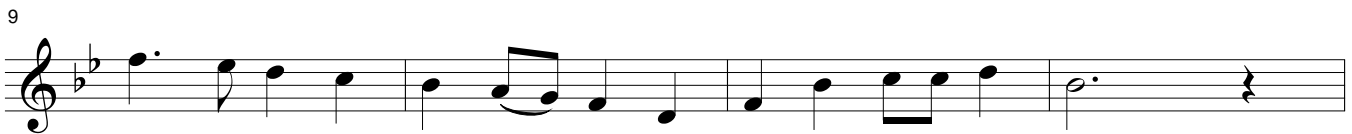
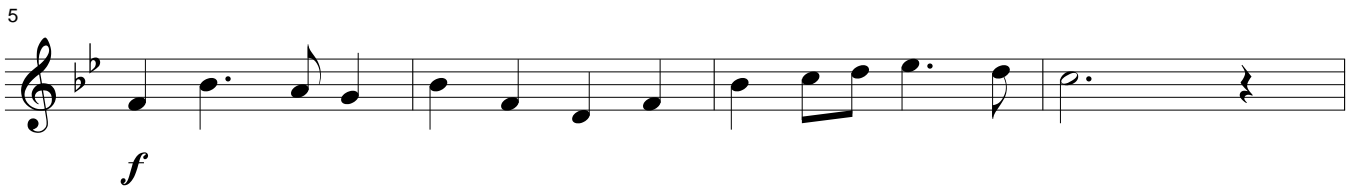
REPUBLIC OF KOREA (South Korea): *Aegukga*

Ahn Eak-tai (1906-1965)

Arranged by Colin Kirkpatrick

♩ = 88

*Introduction*



If you perform this arrangement in public, make a recording or broadcast it through any media, please notify the PRS (UK), or ASCAP (USA), or SOCAN (Canada), or APRA (Australia) or KOMCA (Korea) or the equivalent organisation in your own country, giving the name of the arranger as Colin Kirkpatrick.

This arrangement © Colin Kirkpatrick 2009

Colin Kirkpatrick's  
NATIONAL ANTHEMS EXPRESS

PART 1 IN C

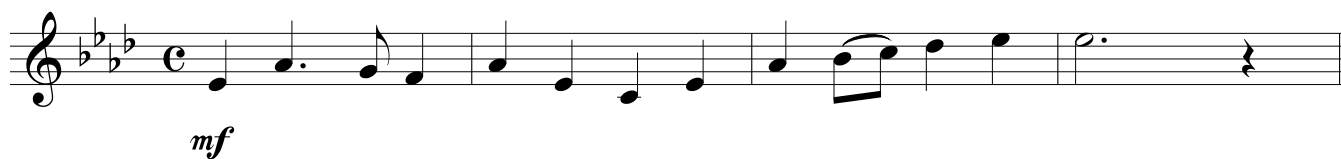
REPUBLIC OF KOREA (South Korea): *Aegukga*

Ahn Eak-tai (1906-1965)

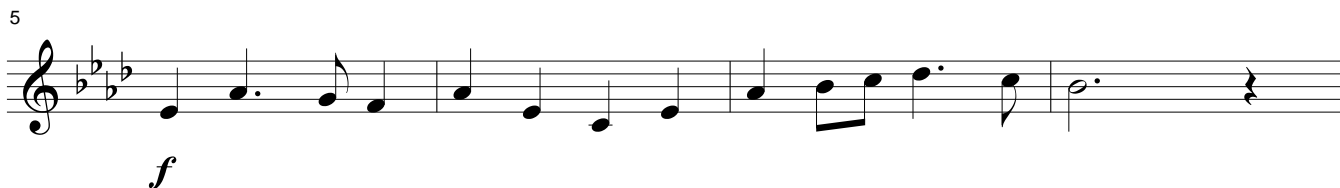
Arranged by Colin Kirkpatrick

♩ = 88

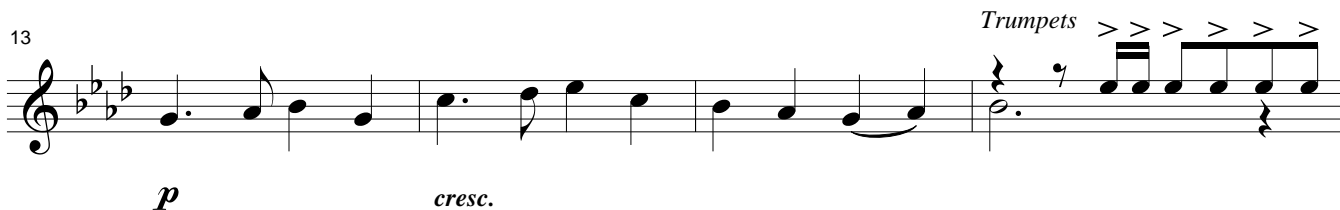
*Introduction*



*mf*

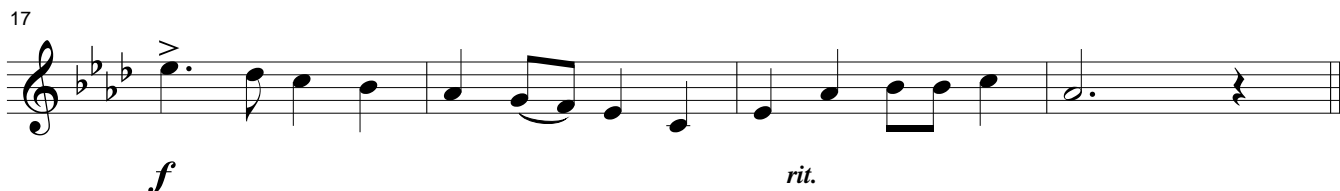


*f*



*p*

*cresc.*



*f*

*rit.*

If you perform this arrangement in public, make a recording or broadcast it through any media, please notify the PRS (UK), or ASCAP (USA), or SOCAN (Canada), or APRA (Australia) or KOMCA (Korea) or the equivalent organisation in your own country, giving the name of the arranger as Colin Kirkpatrick.

This arrangement © Colin Kirkpatrick 2009



Colin Kirkpatrick's  
NATIONAL ANTHEMS EXPRESS

PART 1 IN E FLAT

REPUBLIC OF KOREA (South Korea): *Aegukga*

♩ = 88

Ahn Eak-tai (1906-1965)  
Arranged by Colin Kirkpatrick

*Introduction*

*mf*

5

*f*

9

13

*p* *cresc.*

17

*f* *rit.*

If you perform this arrangement in public, make a recording or broadcast it through any media, please notify the PRS (UK), or ASCAP (USA), or SOCAN (Canada), or APRA (Australia) or KOMCA (Korea) or the equivalent organisation in your own country, giving the name of the arranger as Colin Kirkpatrick.

This arrangement © Colin Kirkpatrick 2009

Colin Kirkpatrick's  
NATIONAL ANTHEMS EXPRESS

PART 1A IN C

REPUBLIC OF KOREA (South Korea): *Aegukga*

$\text{♩} = 88$  Ahn Eak-tai (1906-1965)  
Arranged by Colin Kirkpatrick

*Introduction*

*mf*

5 *f*

9 *p* *cresc.*

13 *f* *rit.*

17

If you perform this arrangement in public, make a recording or broadcast it through any media, please notify the PRS (UK), or ASCAP (USA), or SOCAN (Canada), or APRA (Australia) or KOMCA (Korea) or the equivalent organisation in your own country, giving the name of the arranger as Colin Kirkpatrick.

This arrangement © Colin Kirkpatrick 2009

Colin Kirkpatrick's  
NATIONAL ANTHEMS EXPRESS

PART 1A IN E FLAT

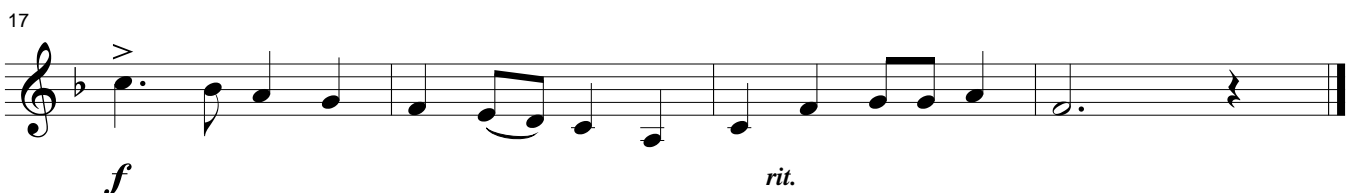
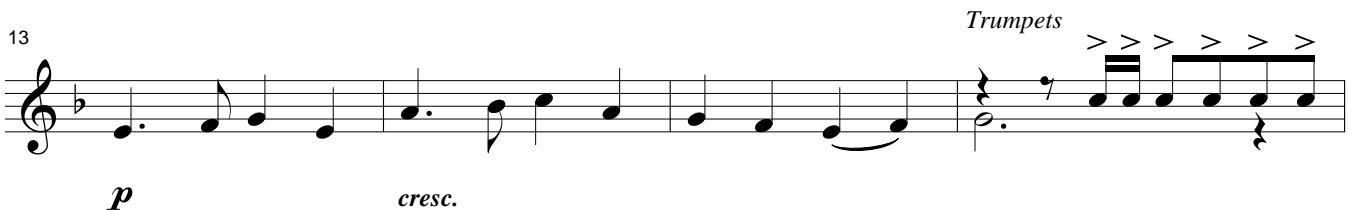
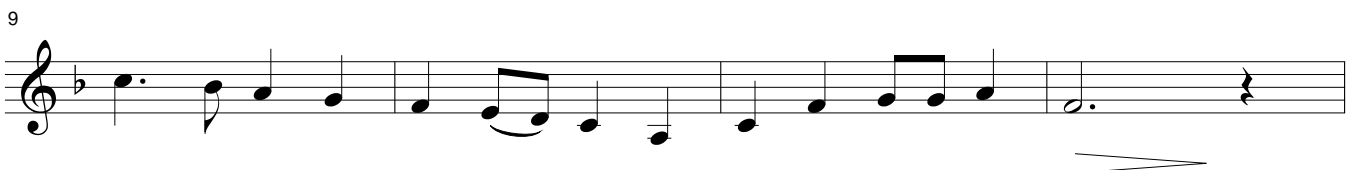
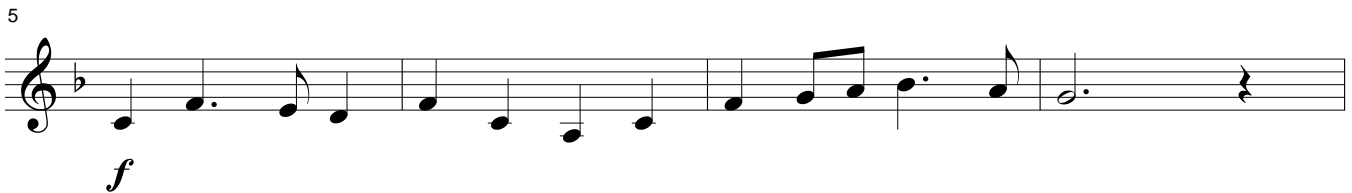
REPUBLIC OF KOREA (South Korea): *Aegukga*

Ahn Eak-tai (1906-1965)

Arranged by Colin Kirkpatrick

♩ = 88

*Introduction*



If you perform this arrangement in public, make a recording or broadcast it through any media, please notify the PRS (UK), or ASCAP (USA), or SOCAN (Canada), or APRA (Australia) or KOMCA (Korea) or the equivalent organisation in your own country, giving the name of the arranger as Colin Kirkpatrick.

This arrangement © Colin Kirkpatrick 2009

Colin Kirkpatrick's  
NATIONAL ANTHEMS EXPRESS

PART 2 IN B FLAT

REPUBLIC OF KOREA (South Korea): *Aegukga*

♩ = 88

Ahn Eak-tai (1906-1965)  
Arranged by Colin Kirkpatrick

*Introduction*

*mf*

5

*f*

9

13

*p* *cresc.* *Trumpets f*

17

*f* *rit.*

If you perform this arrangement in public, make a recording or broadcast it through any media, please notify the PRS (UK), or ASCAP (USA), or SOCAN (Canada), or APRA (Australia) or KOMCA (Korea) or the equivalent organisation in your own country, giving the name of the arranger as Colin Kirkpatrick.

This arrangement © Colin Kirkpatrick 2009

Colin Kirkpatrick's  
NATIONAL ANTHEMS EXPRESS

PART 2 IN C

REPUBLIC OF KOREA (South Korea): *Aegukga*

♩ = 88

Ahn Eak-tai (1906-1965)  
Arranged by Colin Kirkpatrick

*Introduction*

*mf*

5

*f*

9

13

*p* *cresc.*

17

*f* *rit.*

If you perform this arrangement in public, make a recording or broadcast it through any media, please notify the PRS (UK), or ASCAP (USA), or SOCAN (Canada), or APRA (Australia) or KOMCA (Korea) or the equivalent organisation in your own country, giving the name of the arranger as Colin Kirkpatrick.

This arrangement © Colin Kirkpatrick 2009

Colin Kirkpatrick's  
NATIONAL ANTHEMS EXPRESS

PART 2 IN E FLAT

REPUBLIC OF KOREA (South Korea): *Aegukga*

♩ = 88

Ahn Eak-tai (1906-1965)  
Arranged by Colin Kirkpatrick

*Introduction*

*mf*

5

*f*

9

13

*p* *cresc.*

17

*f* *rit.*

If you perform this arrangement in public, make a recording or broadcast it through any media, please notify the PRS (UK), or ASCAP (USA), or SOCAN (Canada), or APRA (Australia) or KOMCA (Korea) or the equivalent organisation in your own country, giving the name of the arranger as Colin Kirkpatrick.

This arrangement © Colin Kirkpatrick 2009

Colin Kirkpatrick's  
NATIONAL ANTHEMS EXPRESS

PART 2A IN C

REPUBLIC OF KOREA (South Korea): *Aegukga*

♩ = 88

Ahn Eak-tai (1906-1965)  
Arranged by Colin Kirkpatrick

*Introduction*

*mf*

5

*f*

9

13

*p* *cresc.*

17

*f* *rit.*

If you perform this arrangement in public, make a recording or broadcast it through any media, please notify the PRS (UK), or ASCAP (USA), or SOCAN (Canada), or APRA (Australia) or KOMCA (Korea) or the equivalent organisation in your own country, giving the name of the arranger as Colin Kirkpatrick.

This arrangement © Colin Kirkpatrick 2009

Colin Kirkpatrick's  
NATIONAL ANTHEMS EXPRESS

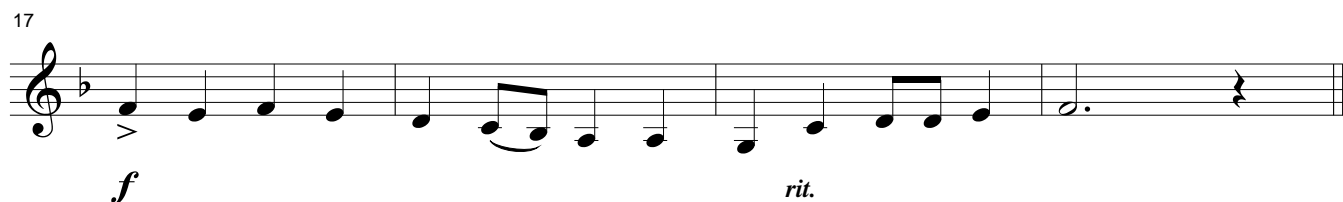
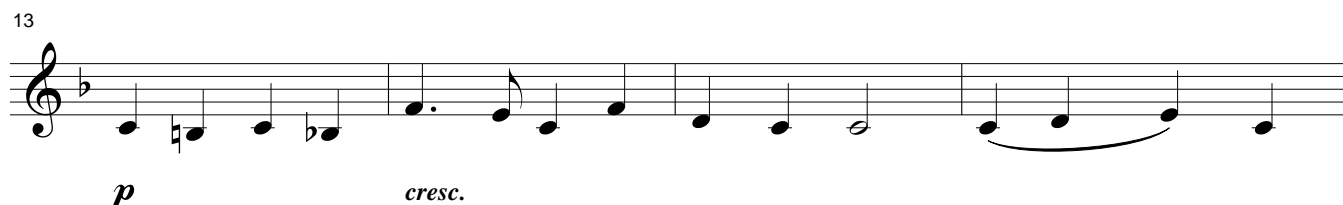
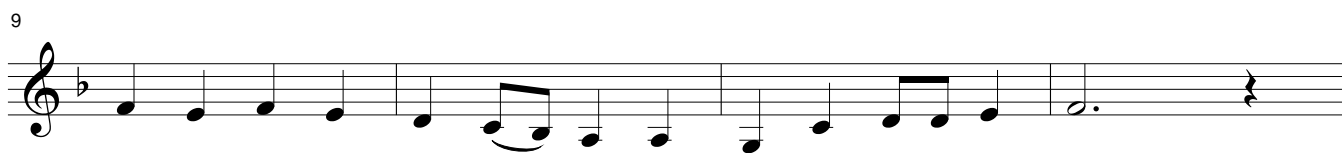
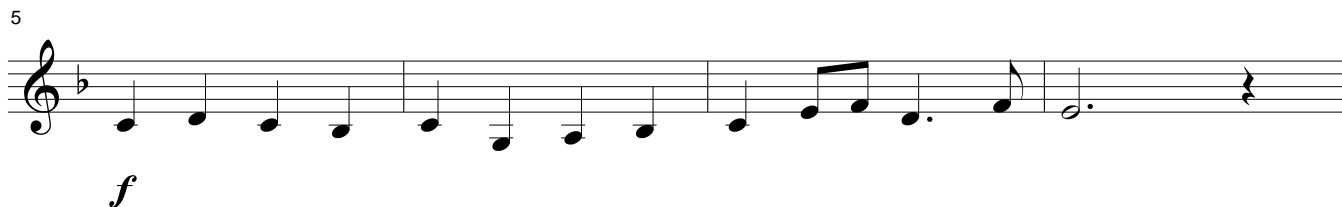
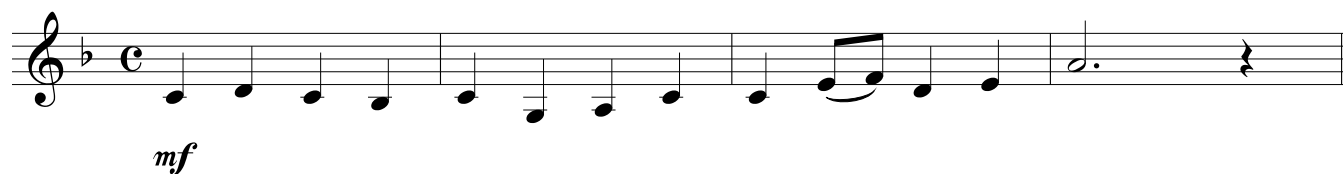
PART 2A IN E FLAT

REPUBLIC OF KOREA (South Korea): *Aegukga*

♩ = 88

Ahn Eak-tai (1906-1965)  
Arranged by Colin Kirkpatrick

*Introduction*



If you perform this arrangement in public, make a recording or broadcast it through any media, please notify the PRS (UK), or ASCAP (USA), or SOCAN (Canada), or APRA (Australia) or KOMCA (Korea) or the equivalent organisation in your own country, giving the name of the arranger as Colin Kirkpatrick.

This arrangement © Colin Kirkpatrick 2009



Colin Kirkpatrick's  
NATIONAL ANTHEMS EXPRESS

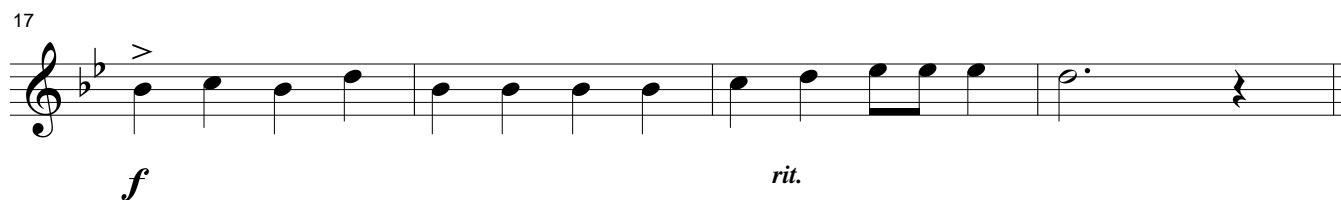
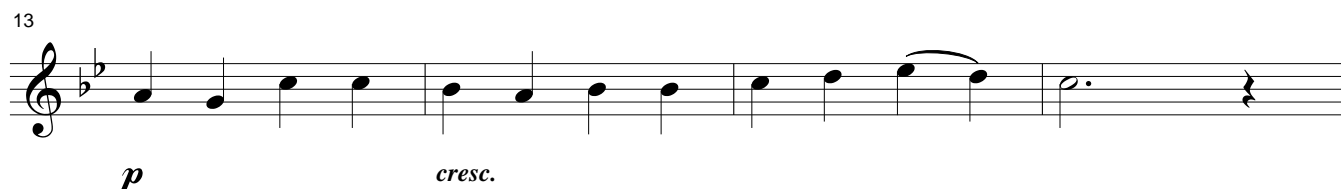
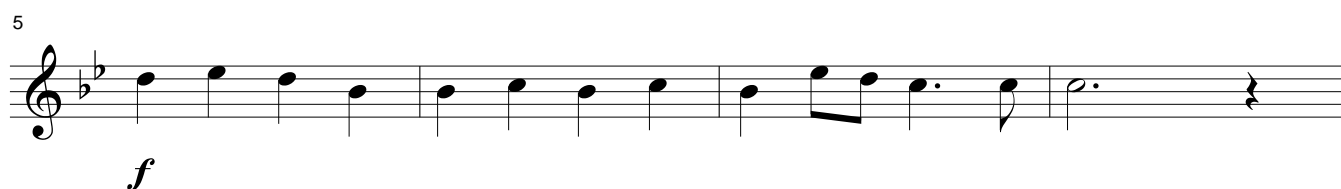
PART 3 IN B FLAT

REPUBLIC OF KOREA (South Korea): *Aegukga*

♩ = 88

Ahn Eak-tai (1906-1965)  
Arranged by Colin Kirkpatrick

*Introduction*



If you perform this arrangement in public, make a recording or broadcast it through any media, please notify the PRS (UK), or ASCAP (USA), or SOCAN (Canada), or APRA (Australia) or KOMCA (Korea) or the equivalent organisation in your own country, giving the name of the arranger as Colin Kirkpatrick.

This arrangement © Colin Kirkpatrick 2009

Colin Kirkpatrick's  
NATIONAL ANTHEMS EXPRESS

PART 3 IN C

REPUBLIC OF KOREA (South Korea): *Aegukga*

♩ = 88

Ahn Eak-tai (1906-1965)  
Arranged by Colin Kirkpatrick

*Introduction*



*mf*



*f*



*p*

*cresc.*



*f*

*rit.*

If you perform this arrangement in public, make a recording or broadcast it through any media, please notify the PRS (UK), or ASCAP (USA), or SOCAN (Canada), or APRA (Australia) or KOMCA (Korea) or the equivalent organisation in your own country, giving the name of the arranger as Colin Kirkpatrick.

This arrangement © Colin Kirkpatrick 2009

Colin Kirkpatrick's  
NATIONAL ANTHEMS EXPRESS

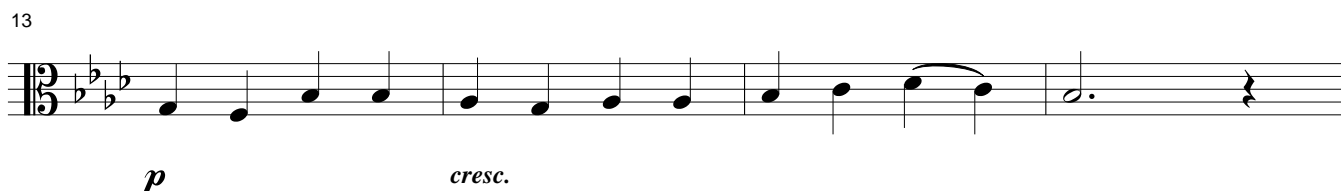
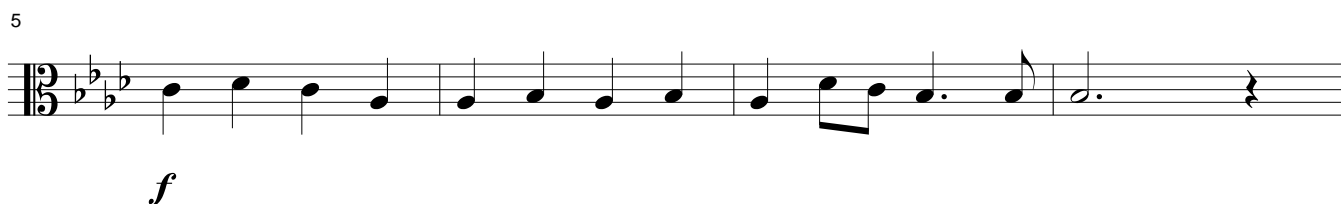
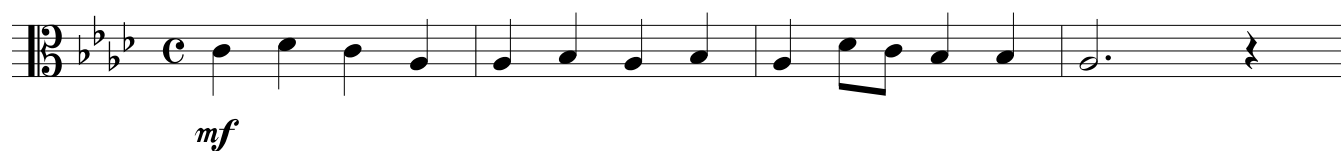
PART 3 IN C ALTO

REPUBLIC OF KOREA (South Korea): *Aegukga*

♩ = 88

Ahn Eak-tai (1906-1965)  
Arranged by Colin Kirkpatrick

*Introduction*



If you perform this arrangement in public, make a recording or broadcast it through any media, please notify the PRS (UK), or ASCAP (USA), or SOCAN (Canada), or APRA (Australia) or KOMCA (Korea) or the equivalent organisation in your own country, giving the name of the arranger as Colin Kirkpatrick.

This arrangement © Colin Kirkpatrick 2009

Colin Kirkpatrick's  
NATIONAL ANTHEMS EXPRESS

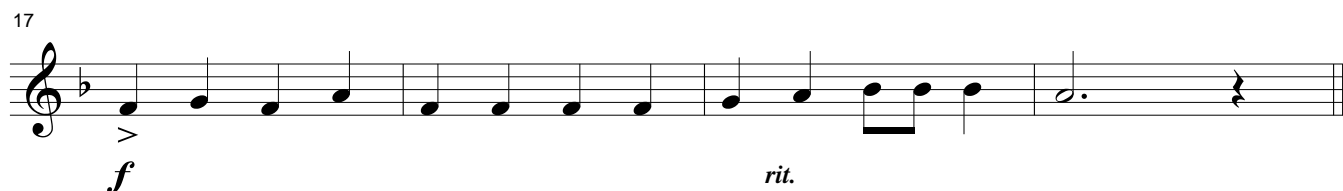
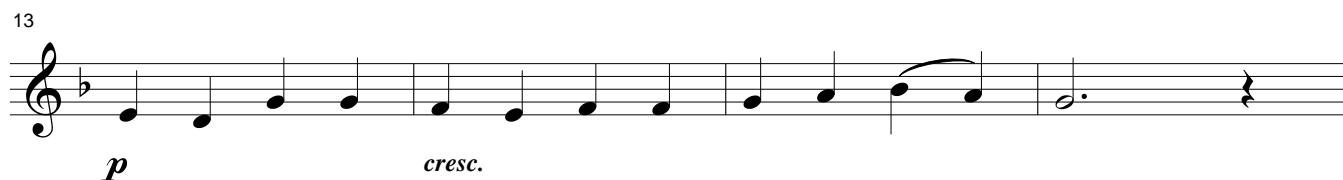
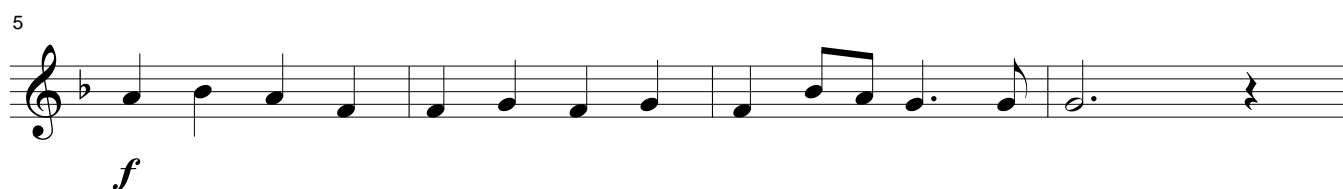
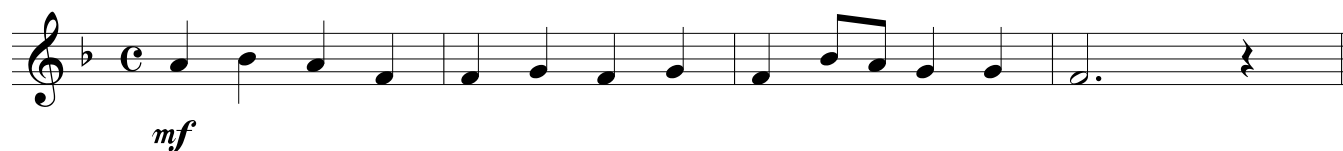
PART 3 IN E FLAT

REPUBLIC OF KOREA (South Korea): *Aegukga*

♩ = 88

Ahn Eak-tai (1906-1965)  
Arranged by Colin Kirkpatrick

*Introduction*



If you perform this arrangement in public, make a recording or broadcast it through any media, please notify the PRS (UK), or ASCAP (USA), or SOCAN (Canada), or APRA (Australia) or KOMCA (Korea) or the equivalent organisation in your own country, giving the name of the arranger as Colin Kirkpatrick.

This arrangement © Colin Kirkpatrick 2009

Colin Kirkpatrick's  
NATIONAL ANTHEMS EXPRESS

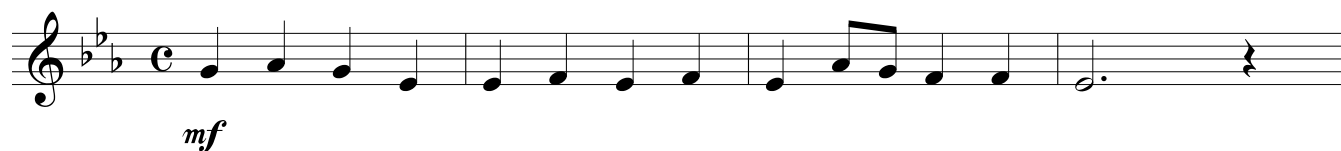
PART 3 IN F

REPUBLIC OF KOREA (South Korea): *Aegukga*

♩ = 88

Ahn Eak-tai (1906-1965)  
Arranged by Colin Kirkpatrick

*Introduction*



Colin Kirkpatrick's  
NATIONAL ANTHEMS EXPRESS

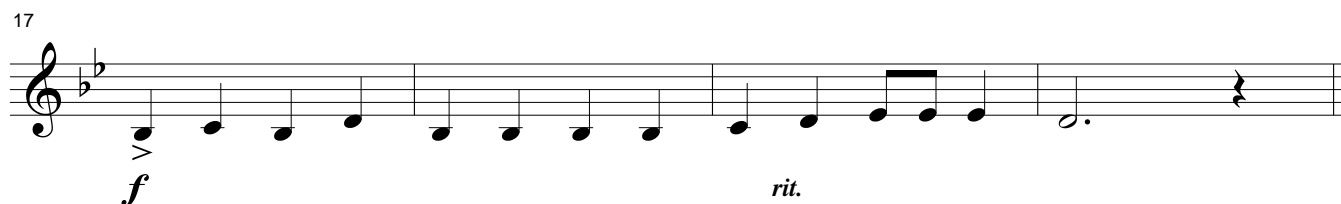
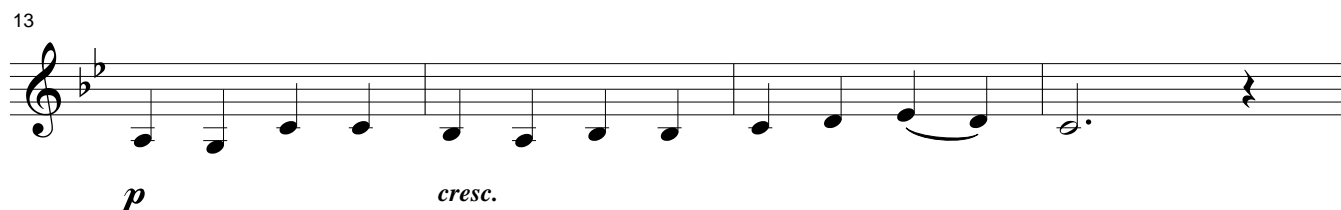
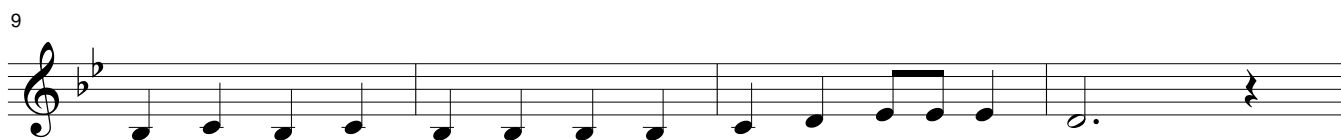
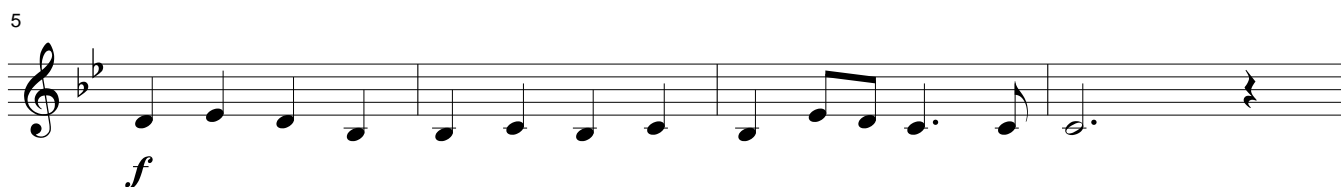
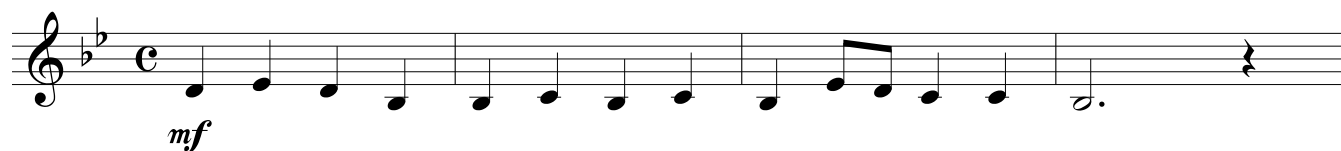
PART 3A IN B FLAT

REPUBLIC OF KOREA (South Korea): *Aegukga*

♩ = 88

Ahn Eak-tai (1906-1965)  
Arranged by Colin Kirkpatrick

*Introduction*



If you perform this arrangement in public, make a recording or broadcast it through any media, please notify the PRS (UK), or ASCAP (USA), or SOCAN (Canada), or APRA (Australia) or KOMCA (Korea) or the equivalent organisation in your own country, giving the name of the arranger as Colin Kirkpatrick.

This arrangement © Colin Kirkpatrick 2009

Colin Kirkpatrick's  
NATIONAL ANTHEMS EXPRESS

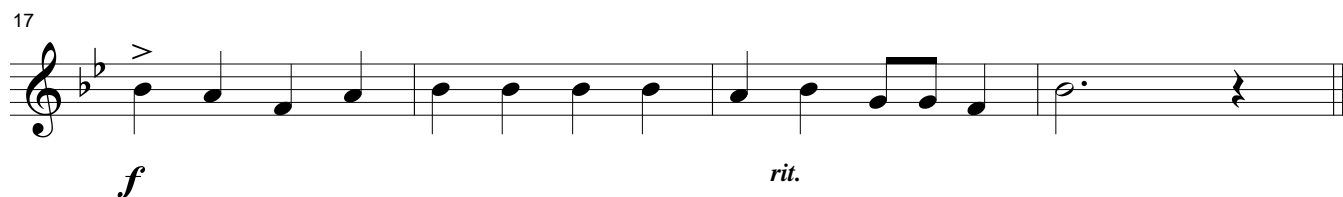
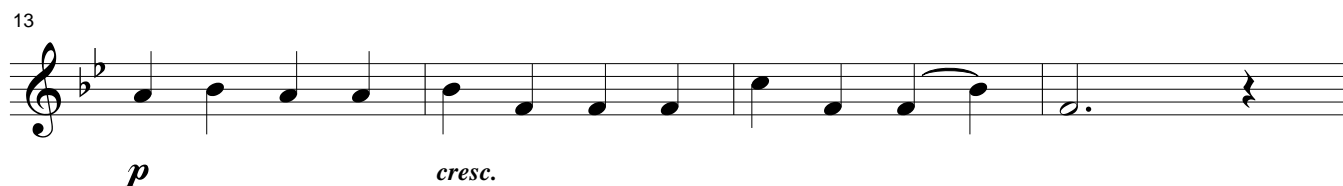
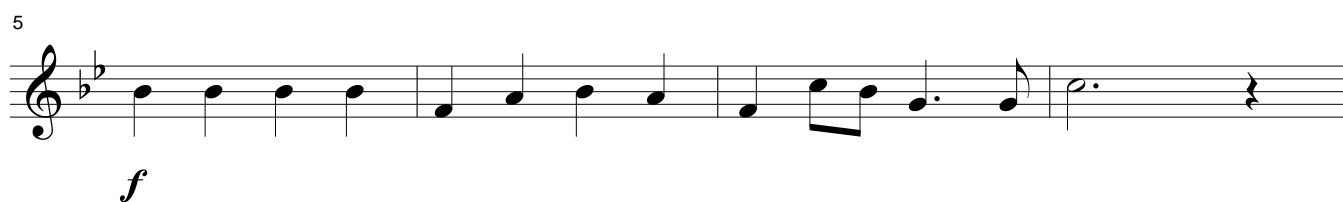
PART 4 IN B FLAT

REPUBLIC OF KOREA (South Korea): *Aegukga*

♩ = 88

Ahn Eak-tai (1906-1965)  
Arranged by Colin Kirkpatrick

*Introduction*



If you perform this arrangement in public, make a recording or broadcast it through any media, please notify the PRS (UK), or ASCAP (USA), or SOCAN (Canada), or APRA (Australia) or KOMCA (Korea) or the equivalent organisation in your own country, giving the name of the arranger as Colin Kirkpatrick.

This arrangement © Colin Kirkpatrick 2009

Colin Kirkpatrick's  
NATIONAL ANTHEMS EXPRESS

PART 4 IN C

REPUBLIC OF KOREA (South Korea): *Aegukga*

♩ = 88

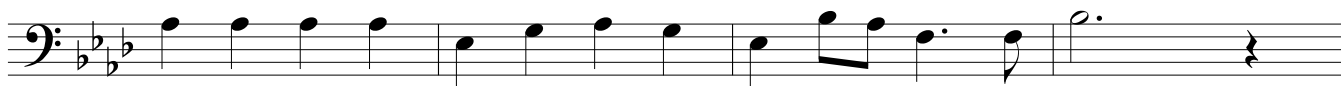
Ahn Eak-tai (1906-1965)  
Arranged by Colin Kirkpatrick

*Introduction*



*mf*

5



*f*

9



13



*p*

*cresc.*

17



*f*

*rit.*

If you perform this arrangement in public, make a recording or broadcast it through any media, please notify the PRS (UK), or ASCAP (USA), or SOCAN (Canada), or APRA (Australia) or KOMCA (Korea) or the equivalent organisation in your own country, giving the name of the arranger as Colin Kirkpatrick.

This arrangement © Colin Kirkpatrick 2009



Colin Kirkpatrick's  
NATIONAL ANTHEMS EXPRESS

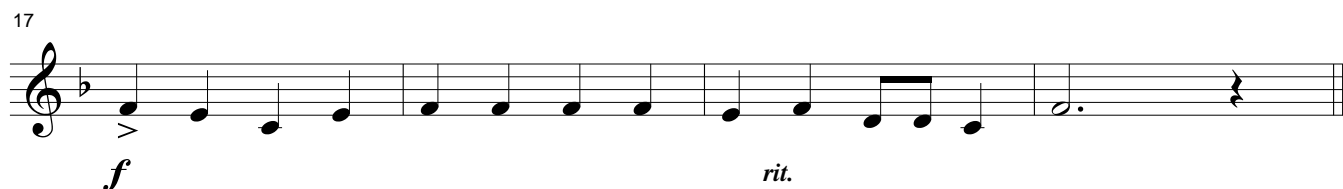
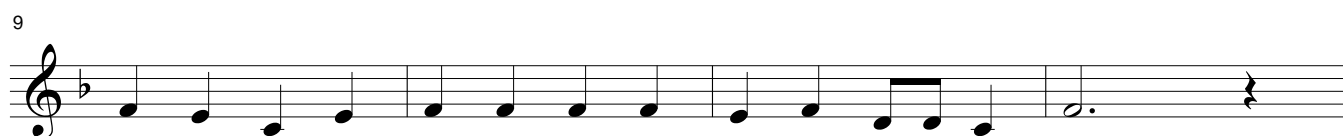
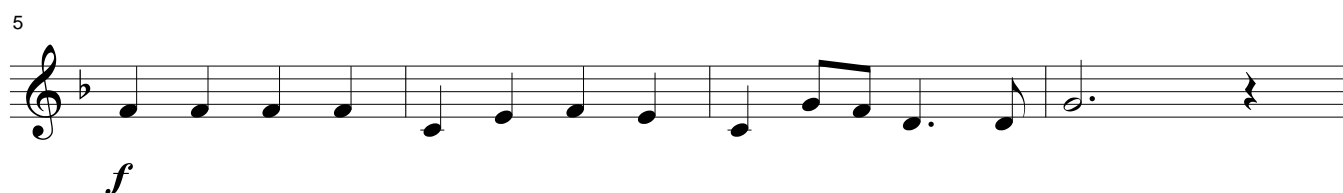
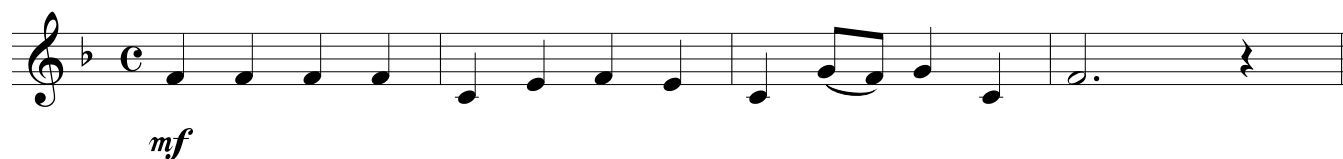
PART 4 IN E FLAT

REPUBLIC OF KOREA (South Korea): *Aegukga*

♩ = 88

Ahn Eak-tai (1906-1965)  
Arranged by Colin Kirkpatrick

*Introduction*



If you perform this arrangement in public, make a recording or broadcast it through any media, please notify the PRS (UK), or ASCAP (USA), or SOCAN (Canada), or APRA (Australia) or KOMCA (Korea) or the equivalent organisation in your own country, giving the name of the arranger as Colin Kirkpatrick.

This arrangement © Colin Kirkpatrick 2009

Colin Kirkpatrick's  
NATIONAL ANTHEMS EXPRESS

PART 4 IN F

REPUBLIC OF KOREA (South Korea): *Aegukga*

♩ = 88

Ahn Eak-tai (1906-1965)  
Arranged by Colin Kirkpatrick

*Introduction*



Colin Kirkpatrick's  
NATIONAL ANTHEMS EXPRESS

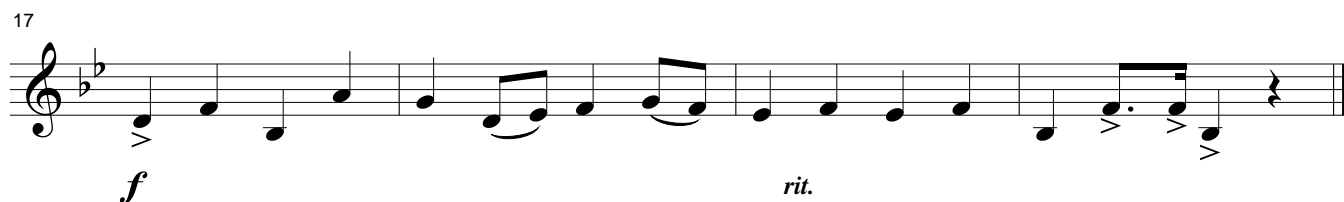
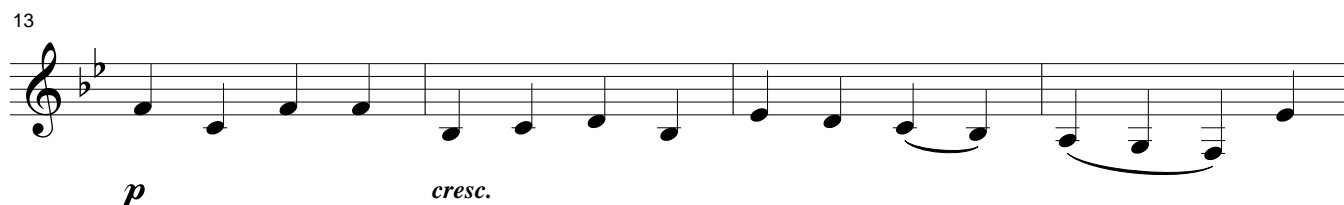
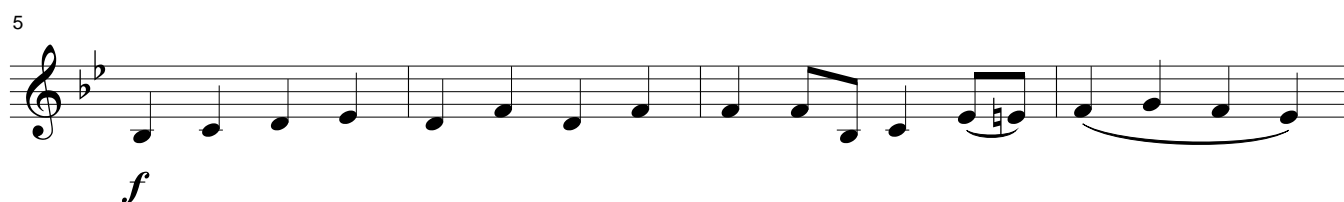
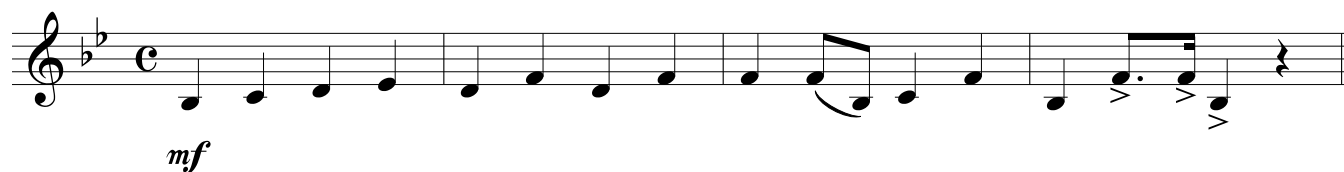
PART 5 IN B FLAT

REPUBLIC OF KOREA (South Korea): *Aegukga*

♩ = 88

Ahn Eak-tai (1906-1965)  
Arranged by Colin Kirkpatrick

*Introduction*



If you perform this arrangement in public, make a recording or broadcast it through any media, please notify the PRS (UK), or ASCAP (USA), or SOCAN (Canada), or APRA (Australia) or KOMCA (Korea) or the equivalent organisation in your own country, giving the name of the arranger as Colin Kirkpatrick.

This arrangement © Colin Kirkpatrick 2009

Colin Kirkpatrick's  
NATIONAL ANTHEMS EXPRESS

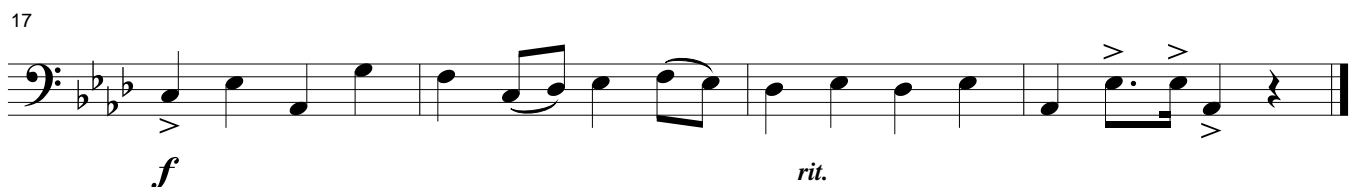
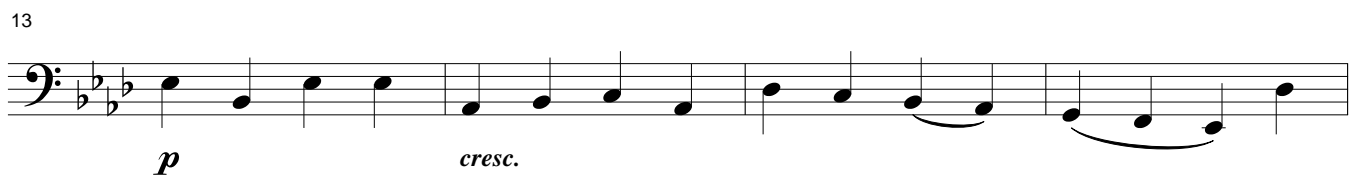
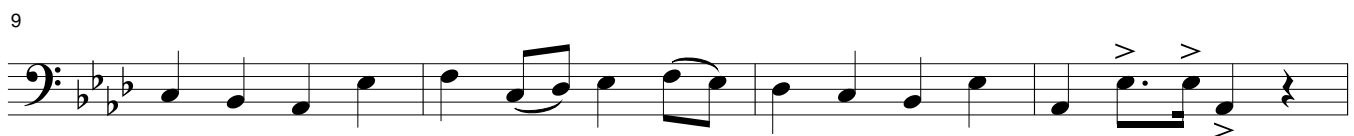
PART 5 IN C

REPUBLIC OF KOREA (South Korea): *Aegukga*

♩ = 88

Ahn Eak-tai (1906-1965)  
Arranged by Colin Kirkpatrick

*Introduction*



If you perform this arrangement in public, make a recording or broadcast it through any media, please notify the PRS (UK), or ASCAP (USA), or SOCAN (Canada), or APRA (Australia) or KOMCA (Korea) or the equivalent organisation in your own country, giving the name of the arranger as Colin Kirkpatrick.

This arrangement © Colin Kirkpatrick 2009

Colin Kirkpatrick's  
NATIONAL ANTHEMS EXPRESS

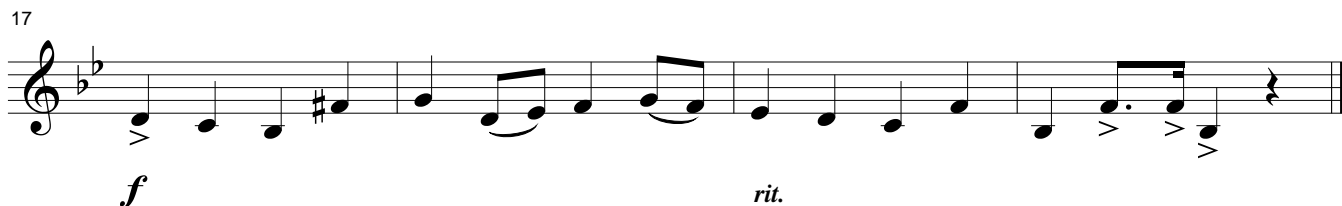
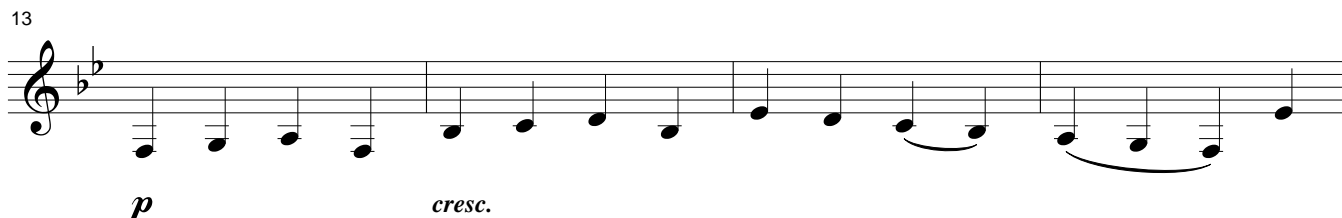
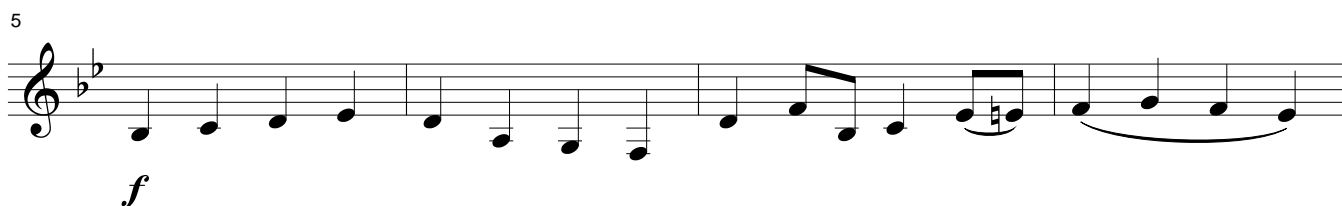
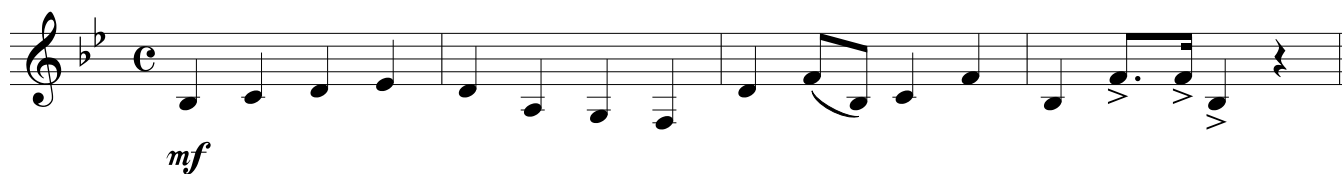
PART 6 IN B FLAT

REPUBLIC OF KOREA (South Korea): *Aegukga*

♩ = 88

Ahn Eak-tai (1906-1965)  
Arranged by Colin Kirkpatrick

*Introduction*



If you perform this arrangement in public, make a recording or broadcast it through any media, please notify the PRS (UK), or ASCAP (USA), or SOCAN (Canada), or APRA (Australia) or KOMCA (Korea) or the equivalent organisation in your own country, giving the name of the arranger as Colin Kirkpatrick.

This arrangement © Colin Kirkpatrick 2009

Colin Kirkpatrick's  
NATIONAL ANTHEMS EXPRESS

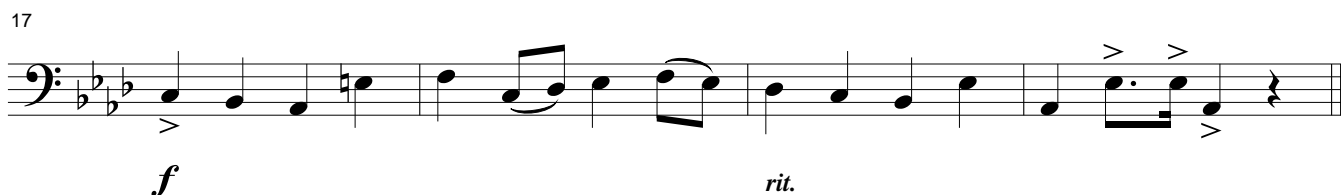
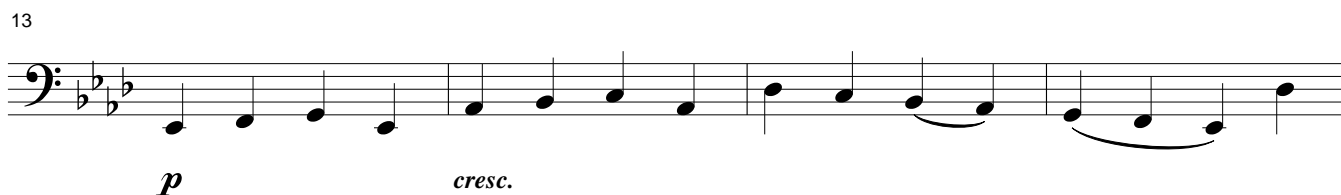
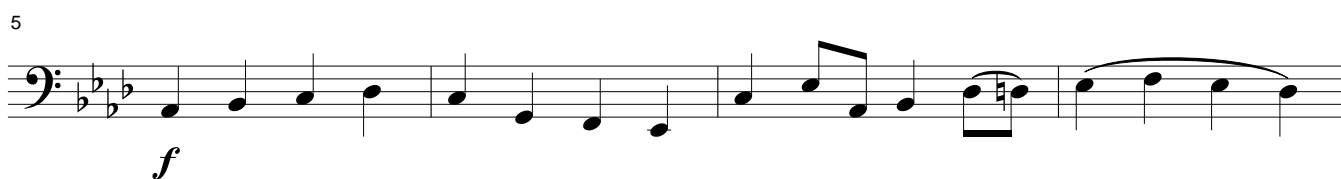
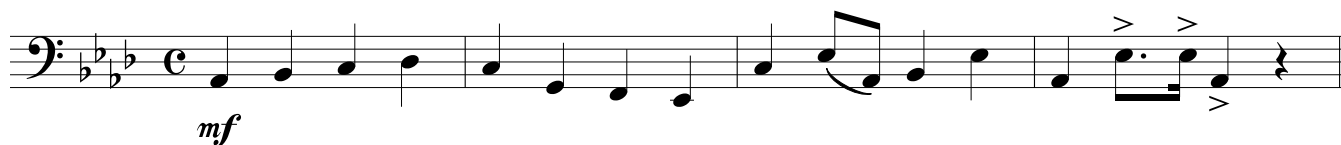
PART 6 IN C

REPUBLIC OF KOREA (South Korea): *Aegukga*

♩ = 88

Ahn Eak-tai (1906-1965)  
Arranged by Colin Kirkpatrick

*Introduction*



If you perform this arrangement in public, make a recording or broadcast it through any media, please notify the PRS (UK), or ASCAP (USA), or SOCAN (Canada), or APRA (Australia) or KOMCA (Korea) or the equivalent organisation in your own country, giving the name of the arranger as Colin Kirkpatrick.

This arrangement © Colin Kirkpatrick 2009

Colin Kirkpatrick's  
NATIONAL ANTHEMS EXPRESS

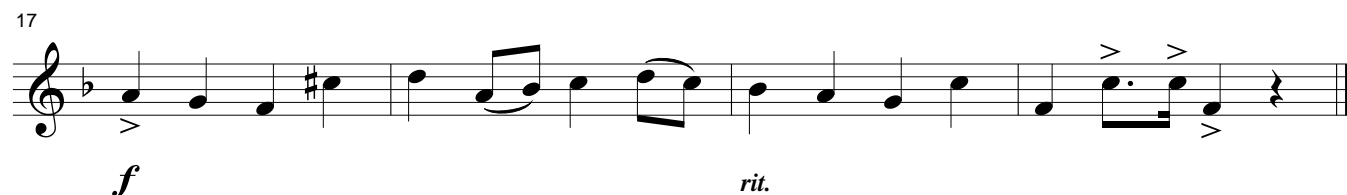
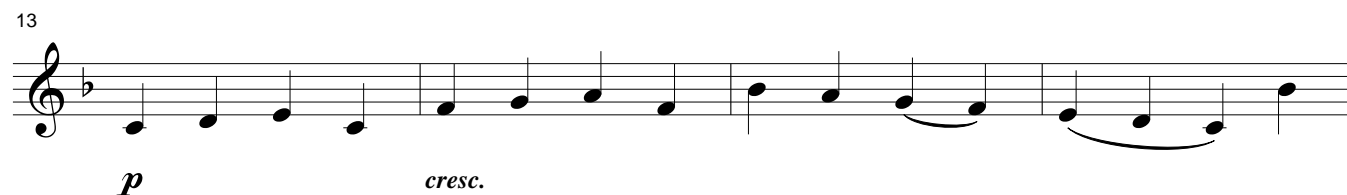
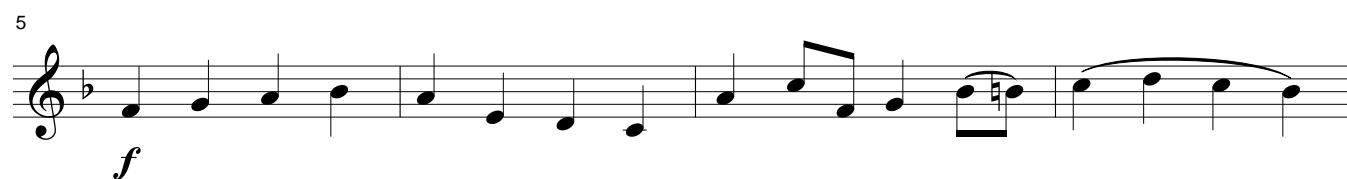
PART 6 IN E FLAT

REPUBLIC OF KOREA (South Korea): *Aegukga*

♩ = 88

Ahn Eak-tai (1906-1965)  
Arranged by Colin Kirkpatrick

*Introduction*



If you perform this arrangement in public, make a recording or broadcast it through any media, please notify the PRS (UK), or ASCAP (USA), or SOCAN (Canada), or APRA (Australia) or KOMCA (Korea) or the equivalent organisation in your own country, giving the name of the arranger as Colin Kirkpatrick.

This arrangement © Colin Kirkpatrick 2009

REPUBLIC OF KOREA (South Korea): *Aegukga*

♩ = 88

Music: Ahn Eak-tai (1906-1965)

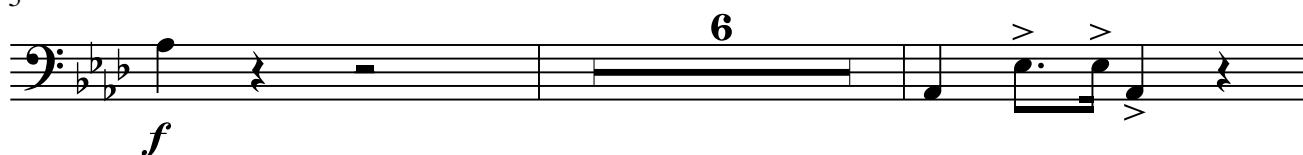
Arranged by Colin Kirkpatrick

*Introduction*

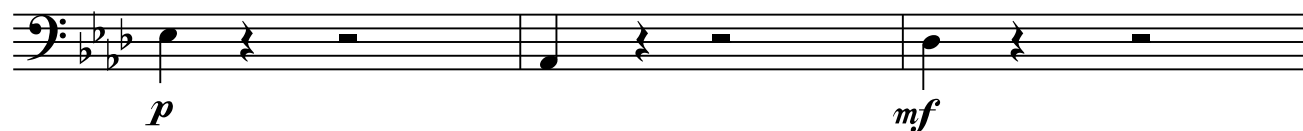


*mf* In A flat, B flat and E flat.

5



13



16



If you perform this arrangement in public, make a recording or broadcast it through any media, please notify the PRS (UK), or ASCAP (USA), or SOCAN (Canada), or APRA (Australia) or KOMCA (Korea) or the equivalent organisation in your own country, giving the name of the arranger as Colin Kirkpatrick.

This arrangement © Colin Kirkpatrick 2009.

Sheet Music Plus Order 2461616724. 1 copy purchased by tocc82@hotmail.com on Jan 9, 2019.



Colin Kirkpatrick's  
NATIONAL ANTHEMS EXPRESS

PERCUSSION

REPUBLIC OF KOREA (South Korea): *Aegukga*

♩ = 88

Music: Ahn Eak-tai (1906-1965)

Arranged by Colin Kirkpatrick

Introduction

**4**

Cymbals

Snare Drum

Bass Drum

**f**

7

Cym.

S.Dr.

B. Dr.

13

Cym.

S.Dr.

B. Dr.

**p**

**f**

*cresc.*

**p** *cresc.* **f**

18

Cym.

S.Dr.

B. Dr.

*rit.*

*rit.*

*rit.*

If you perform this arrangement in public, make a recording or broadcast it through any media, please notify the PRS (UK), or ASCAP (USA), or SOCAN (Canada), or APRA (Australia) or KOMCA (Korea) or the equivalent organisation in your own country, giving the name of the arranger as Colin Kirkpatrick.

This arrangement © Colin Kirkpatrick 2009.

Sheet Music Plus Order 2461616724. 1 copy purchased by tocc82@hotmail.com on Jan 9, 2019.

Colin Kirkpatrick's  
NATIONAL ANTHEMS EXPRESS

PIANO REDUCTION

REPUBLIC OF KOREA (South Korea): *Aegukga*

Music: Ahn Eak-tai (1906-1965)

Arranged by Colin Kirkpatrick

♩ = 88

*Introduction*

*mf*

*mf*

6

12

*p* *cresc.*

*Trumpets*

17

*f* *rit.*

If you perform this arrangement in public, make a recording or broadcast it through any media, please notify the PRS (UK), or ASCAP (USA), or SOCAN (Canada), or APRA (Australia) or KOMCA (Korea) or the equivalent organisation in your own country, giving the name of the arranger as Colin Kirkpatrick.

This arrangement © Colin Kirkpatrick 2009.