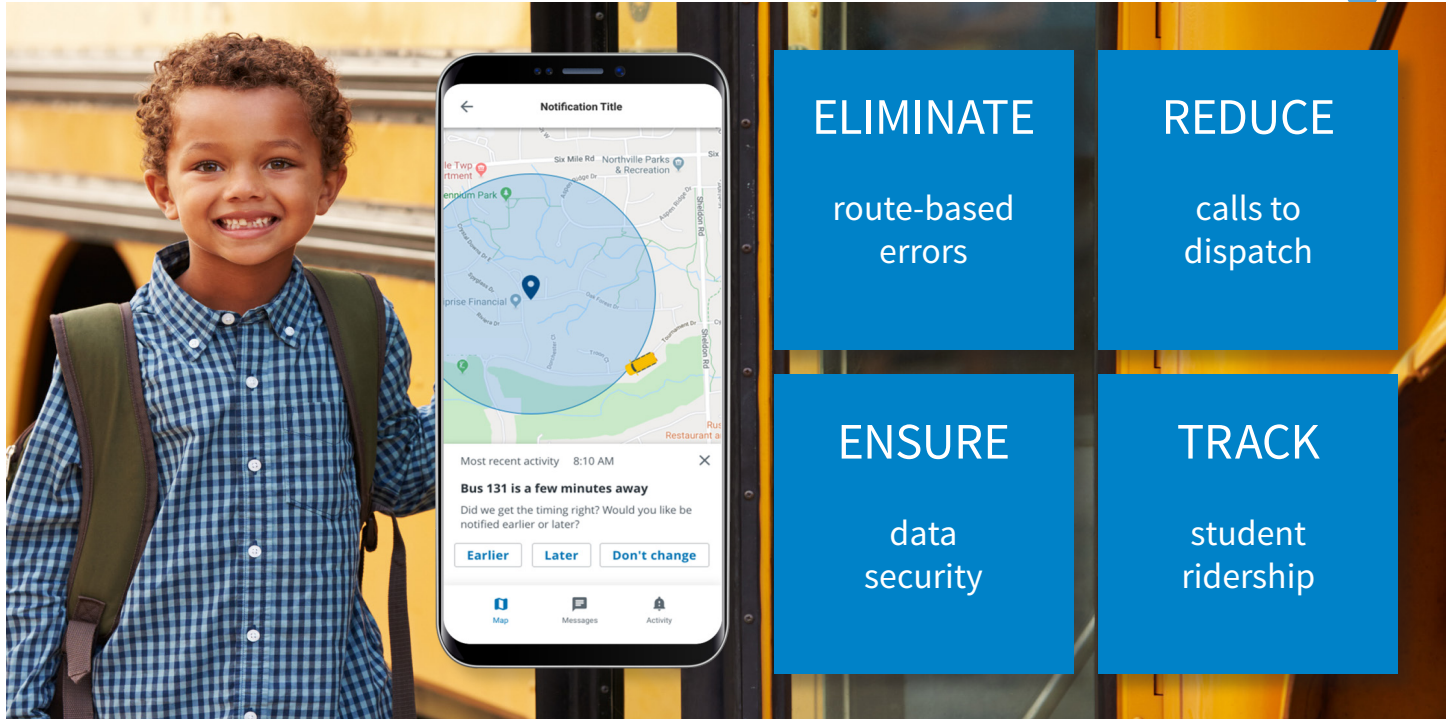




Give parents peace of mind.



Open new lines of communication.

School districts and parents care about student safety, just from slightly different perspectives. Zonar MyView brings peace of mind to both. Parents can use the MyView mobile app to see where their child’s school bus is located and customize proximity-based alerts. And districts can use MyView’s back-end dispatcher portal to communicate bus changes, delays or breakdowns directly to parents’ phones. Even bus substitutions automatically update in the parent app, creating a seamless workflow and less headache. Easier communication, peace of mind for everyone. All without needing a routing provider.

Lighten parents’ daily load.

Providing parents an easy-to-use mobile app to check on their child’s school bus whenever they need means one less thing for them to worry about. Routing provided apps’ estimated times of arrival are often inaccurate. MyView uses GPS data provided by the Zonar V4 telematics control unit (TCU) to track and display that bus’s location on an aerial map, powered by Google—all in near real time. Parents can create proximity-based alerts to plan complex home life accordingly.

Key features

- Real-time, map-based bus locator
- Support Assistant to answer questions
- Guaranteed parent and student information privacy
- Custom zones for each stop and facility
- Email alerts and SMS messages
- Zonar V4™ GPS tracking integration
- Available on smartphones, tablets and computers
- GPS, telematics and routing data analytics for transportation efficacy

Customize to fit complex schedules.

Parents can custom-build zones within MyView, and time their morning and afternoon schedules more efficiently by setting up SMS alerts for when the bus is approaching. This is especially helpful for not getting stuck waiting outside during inclement weather.

They can also add multiple zones for different drop-off destinations such as daycare or sporting fields. If managing multiple zones within MyView, they can associate each zone to relevant buses, eliminating unnecessary alerts.

Capture ridership details for yourself and parents.

Equip each student with a passive, Zonar-issued RFID card. They scan their card upon boarding and exiting the bus, which captures the exact time, location and bus number.

You see inside bus ridership so you can better serve students and parents. Parents can view and receive instant alerts with the details of their child getting on and off the bus. Useful insight for you, peace of mind for parents.



Reduce parent calls to the district.

Most calls to a district's dispatch come from parents. Where's the bus? Is it running late? Did we miss it? Districts can use the Zonar MyView back-end portal to set up zones around schools and seamlessly manage bus substitutions. Parents can look up the bus and receive an alert through their MyView app when the bus arrives or departs the facility, is running late, breaks down or needs to be substituted.

Dispatchers can also send messages to all parents, or certain ones associated with a specific bus or student. Either way, parents can then follow the appropriate bus or route number instead of calling the district.

Answer parents' questions effectively.

Fewer parents will call for bus locations—but what about those who call for help with MyView? Use MyView Support Assistant to view their account and answer common questions.

View basic information such as:

- username, email address, device ID and signup date
- students they follow
- push notification settings
- zones and notification history

Plus, if necessary, school administration can delete a parent account at any time.

Keep data and information security airtight.

Security is priority one, especially where student information is concerned. To set up MyView, parents are required to go through a multi-step process. The school district sends them an access code to enter, parents who don't know the code need to call the district. Parents must also enter their child's unique district ID.

All parent information is locked down and password protected within the app to prevent unauthorized people from opening the app and viewing the child's bus information.