



KRUM ISD

**BOND PLANNING
COMMITTEE**

Recommendation to Board of Trustees

January 12, 2022

PURPOSE AND CHARGE



- Consider the educational needs of all students and **align with the district's mission, vision and goals**
- **Represent the entire community**, its values and perceptions in the facility-planning process
- Assess and prioritize the district's **current and long-term facility needs**, including new construction, renovations and capital improvements
- **Bring forward recommendations to the Board of Trustees** as to how to address the district's facility needs, including what should be included and how much money should be requested in a possible bond election

Meetings:

June – December

Committee Members:

Approximately 20
citizens & employees
who brought varying
perspectives to process

Transparent Process:

Materials posted at
krumisd.net

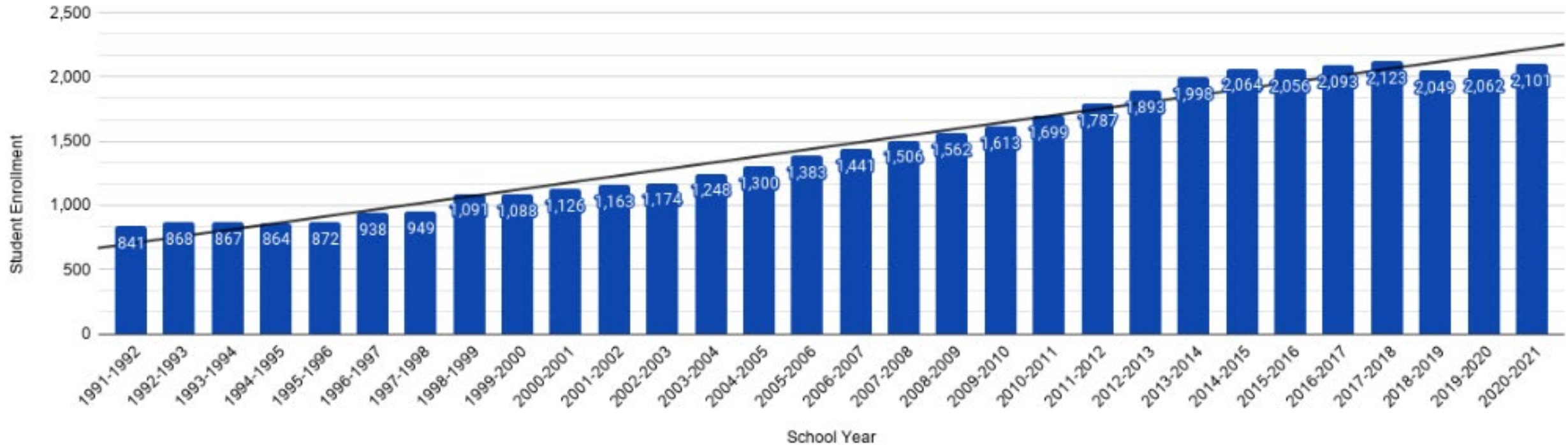


OUR COMMITTEE



**KRUM ISD IS
GROWING!**

ENROLLMENT HISTORY



149% increase in student enrollment over the last 20 years!

UPCOMING RESIDENTIAL GROWTH

Krum Independent School District
Elementary School Zones
SY 2019 - 2020

TOTAL HOMES: 11,849

Legacy Ranch
36 homes

Green Brick
Partners
2000 homes

Astra
Development
2200 homes

Erickson Farms
183 homes
Aspen Park
Phase 2
60 homes
Hopkins Meadow
Phase 2
76 homes

Big Sky Estates
1502 homes

Ripy Road
231 homes

Brisa Meadows
24 homes

The Retreat
137 units

Trails of
Jordan Creek
659 homes
297 townhouses

Midway Ridge
200 homes

The Legends
1097 homes

Thomas Egan
26 homes

Green Brick
1500 homes

The Meadows
1621 homes

FORECASTED STUDENTS, 2022-2031



Information Reviewed by Committee in December 2021:

Grade	2018	2019	2020	2021	2022	2023	2024	2025	2026	2027	2028	2029	2030	2031
Total Students*														
PK-1	311	313	342	382	385.7	399.5	438.1	458.7	486.2	524.6	550.9	576.1	604.4	630.5
2-5	604	611	586	620	675.4	719.3	802.1	882.2	986.3	1,070.6	1,170.1	1,238.3	1,296.4	1,361.8
6-8	495	493	501	537	540.9	557.5	564.4	652.7	737.2	853.1	921.5	999.8	1,076.3	1,146.3
9-12	633	635	661	667	702.5	753.6	777.4	838.3	931.5	970.6	1,082.2	1,198.2	1,293.7	1,411.1
PK-12	2,043	2,052	2,090	2,206	2,304.5	2,429.9	2,582.0	2,831.9	3,141.2	3,418.9	3,724.7	4,012.4	4,270.8	4,549.7

The enrollment is projected to more than double in 10 years.

FORECASTED STUDENTS, 2022-2031



Information Received by District in January 2022:

Grade	2018	2019	2020	2021	2022	2023	2024	2025	2026	2027	2028	2029	2030	2031
PK-1	303	298	327	362	383.0	415.4	437.9	467.1	514.8	562.8	600.5	639.9	681.0	720.5
2-5	584	589	566	586	665.3	736.7	817.1	901.6	1,016.5	1,120.0	1,231.8	1,319.9	1,399.2	1,483.1
6-8	473	470	475	513	544.7	592.7	600.9	700.6	809.0	945.0	1,025.3	1,115.6	1,208.8	1,296.6
9-12	609	604	631	631	695.1	786.2	829.5	919.2	1,050.9	1,126.5	1,266.4	1,421.4	1,549.6	1,701.0
PK-12	1,969	1,961	1,999	2,092	2,288.1	2,531.0	2,685.4	2,988.5	3,391.2	3,754.3	4,124.0	4,496.8	4,838.6	5,201.2

Updated enrollment projections show 5,201 students in 2031...
an increase of more than 3,000 students in 10 years.

CAMPUS CAPACITIES COMPARED TO PROJECTIONS



	EEC	DYER ELEMENTARY	DODD ELEMENTARY	KRUM MIDDLE SCHOOL	KRUM HIGH SCHOOL
	PreK – 1st	2nd – 5th	2nd – 5th	6th – 8th	9th – 12th
Current Functional Capacity	625	568	612	646	860
2031 Student Enrollment Forecast	631	1,362		1,147	1,412

KEY TAKEAWAYS FROM DEMOGRAPHIC REPORT



Capacity

EEC 625 functional capacity

Dyer 568 functional capacity

Dodd 612 functional capacity

***TOTAL ES: 1,805 functional capacity**

**KMS 646 functional capacity

***KHS 860 functional capacity

**Elementary exceeds capacity in 2028*

***KMS exceeds capacity in 2025*

****KHS exceeds capacity in 2026*

Student projections in 2031:

Pre-K 80

K-5 1,913

6-8 1,147

9-12 1,412



BOND PROJECT CONSIDERATIONS

CURRENT GRADE ALIGNMENT



Krum Early
Education
Center



Pre-K – 1st

Hattie Dyer
Elementary
School



2nd – 5th

Blanche Dodd
Elementary
School



2nd – 5th

Krum Middle
School



6th – 8th

Krum High
School



9th – 12th

PROPOSED GRADE ALIGNMENT



EE – Pre-K



K – 5th



6th – 8th



9th – 12th

BOND CONSIDERATIONS



Project Options Discussed :

- Build New Elementary School(s)
- EEC Addition & Conversion to K-5
- Conversion of Dyer to EE/PK & Tech.
- Utilize Dyer as Elementary
- Utilize Dodd as K-5
- Utilize Dodd as 6th Grade Center
- Land Purchases
- New HS Phase 1
- New HS Infrastructure
- Stadium

Bond Options Discussed:

- One large bond package designed to meet KISD's needs for 10 years
- Multiple smaller bond elections, requiring new vote every 2-3 years

NOTE: If KISD pushes the high school to 2027 or 2028, the district would need another bond election in 2024 or 2025 to allow time for design, planning and construction.

A blue-tinted photograph of three young women sitting at a table, focused on writing in their notebooks. They are holding pens and looking down at their papers. The background shows a classroom setting with shelves and papers.

— OUR RECOMMENDATION —

RECOMMENDATION



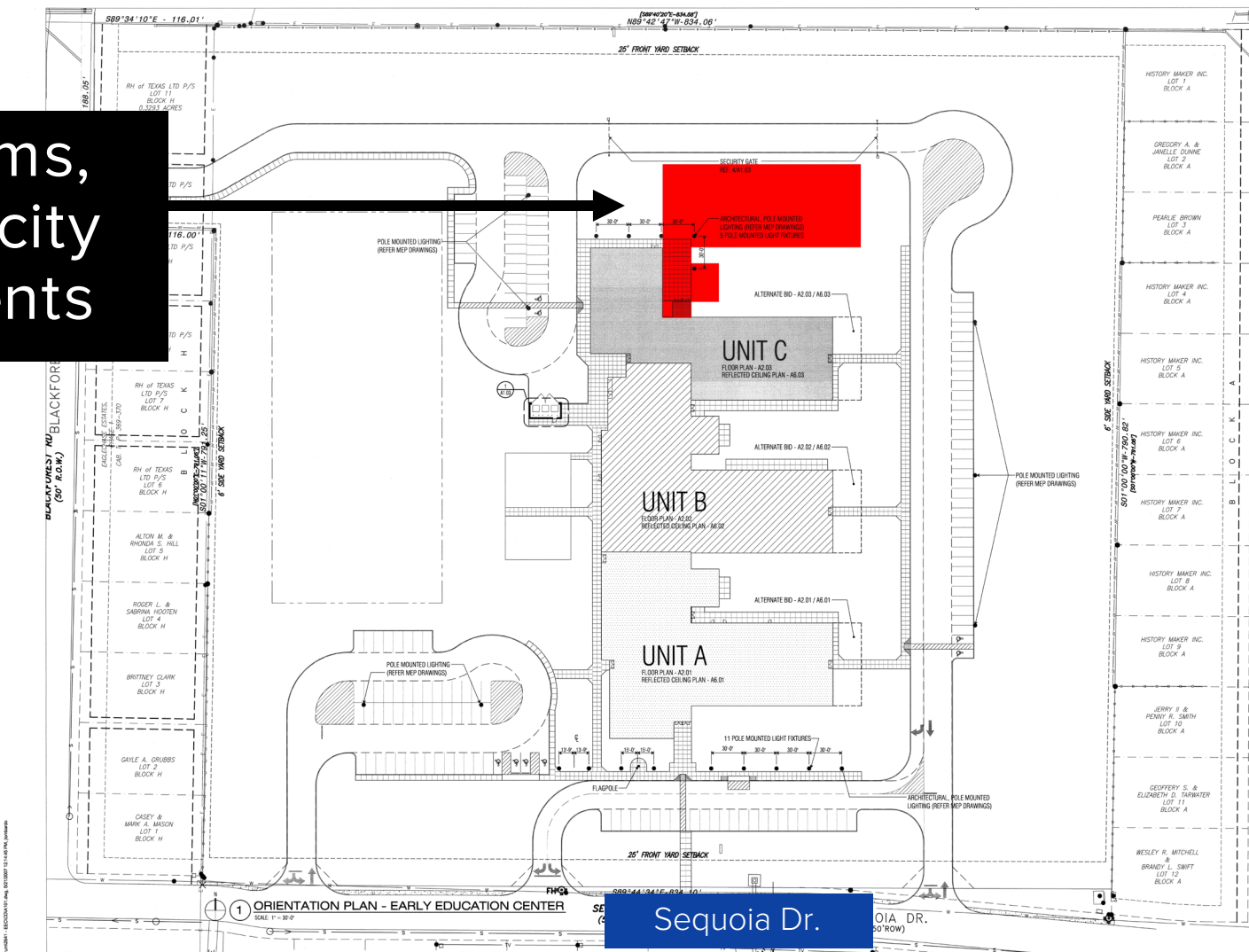
PROJECT	TOTAL PROJECT COST
New Elementary #3 - 850 capacity (2024 completion)	\$37,000,000
Add on to EEC to Add Capacity - 850 capacity	\$7,400,000
Dyer Renovations (Technology & Child Care)	\$2,400,000
New High School Infrastructure	\$5,700,000
TOTAL	\$52,500,000

This plan allows Krum ISD to utilize Dodd and Dyer as a flex space and/or floater campus during the growth and construction.

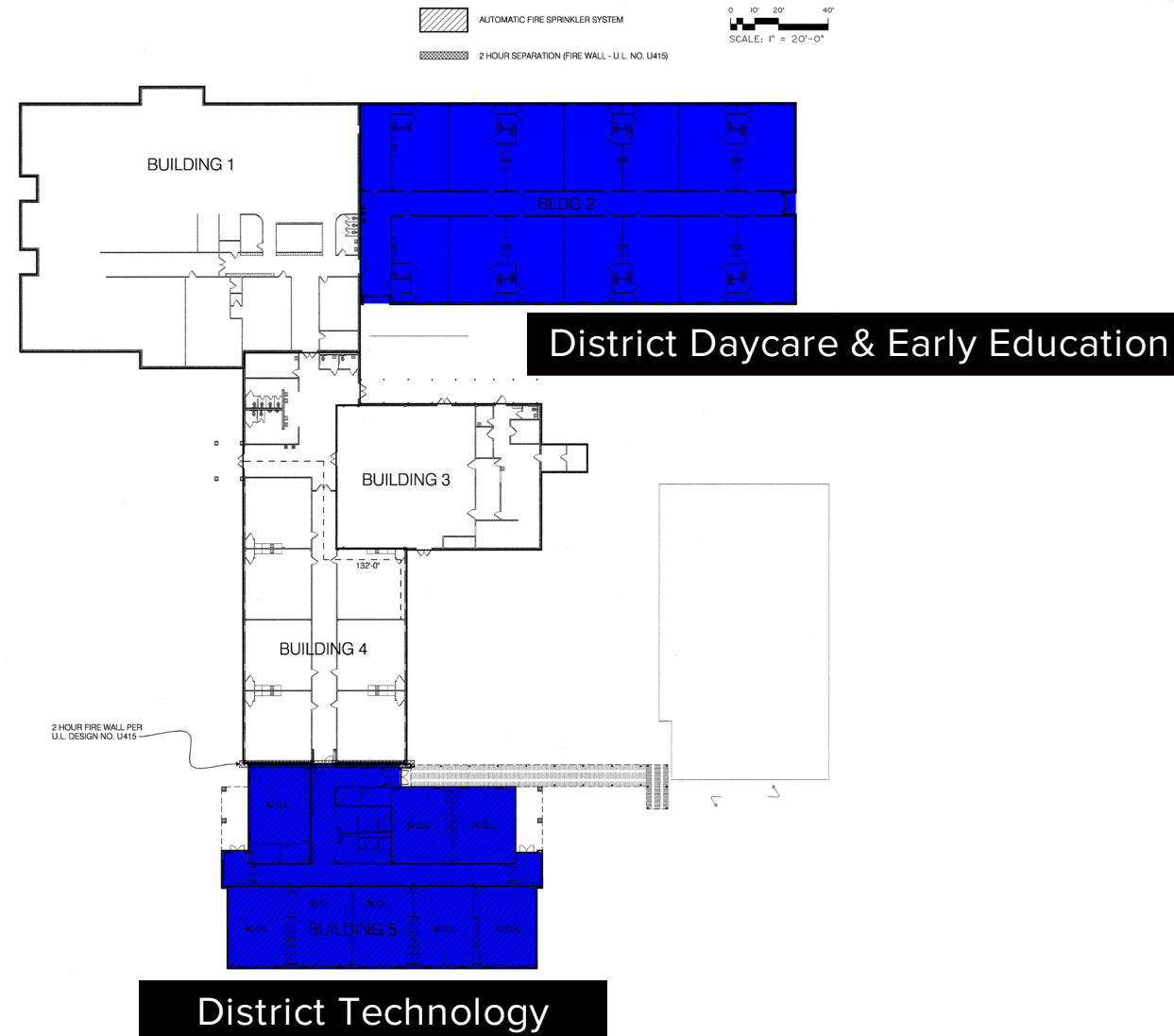
EEC ADDITION



Add classrooms,
creating capacity
for 850 students



DYER RENOVATION



KRUM ISD BONDING CAPACITY



Current I&S
Tax Rate:
34 cents

Maximum Tax
Impact from a Bond:
+ 16 cents

By state law, a Texas public school district's I&S rate is capped at 50 cents.

- Krum ISD has seen 20% growth in values in the past 5 years.
- The committee is recommending an I&S tax rate of \$0.50 to accommodate growth and address needs.
- Based on projected growth in values, the district can sell bonds in phases as financial capacity is available. (Approximately \$50 million every 2 years.)



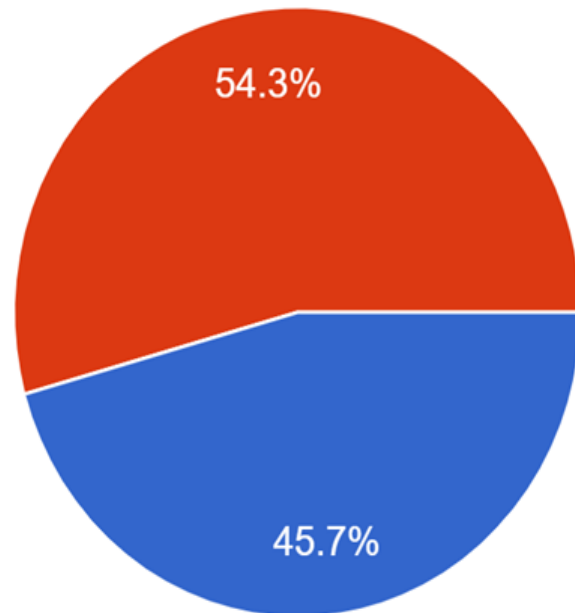
SURVEY RESULTS

OVERALL RESULTS



Which bond option would you prefer to see?

208 responses



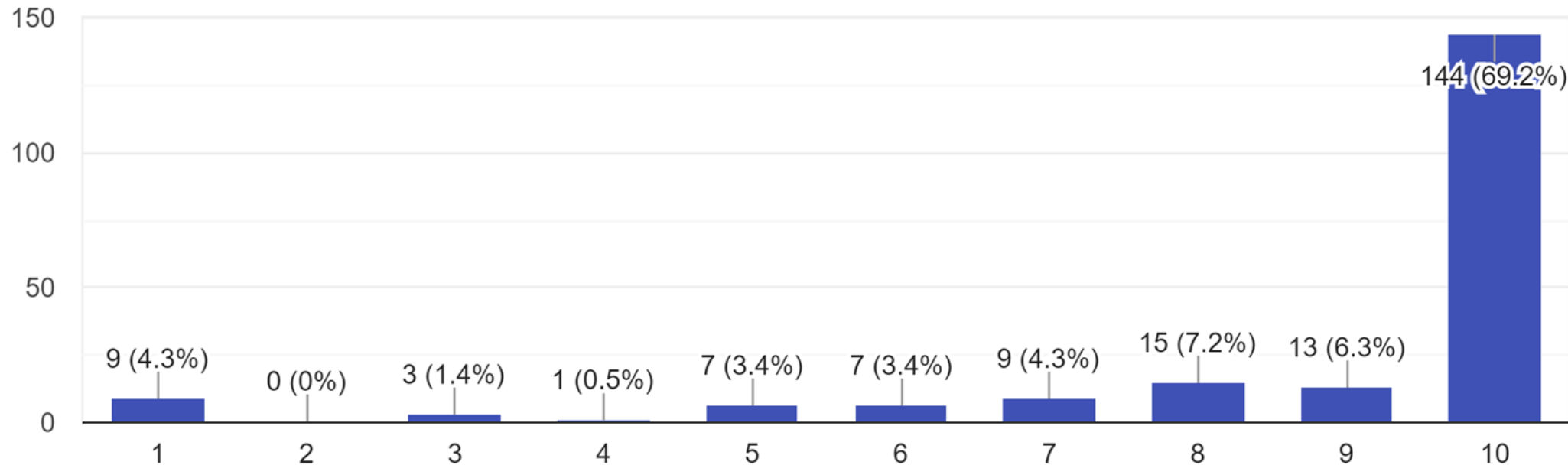
- One large bond package that is designed to meet the needs of our students for the next 10 years.
- Multiple bond packages requiring a new vote every 2-3 years.

OVERALL RESULTS



How likely are you to vote during a bond election?

208 responses



90.4% of respondents selected a 6 or above for likeliness to vote.

Average: 8.9



NEXT STEPS

NEXT STEPS & ELECTION DATES



School Board to Discuss & Consider Recommendation

Now – February

State's Deadline to Call Election

Friday, February 18, 2022

Krum ISD to Inform Community about Bond Election

February – May

Voter Registration Deadline

Thursday, April 7, 2022

Early Voting

Monday, April 25 – Tuesday, May 3

Election Day

Saturday, May 7, 2022



QUESTIONS?