



KRUM ISD

**BOND PLANNING
COMMITTEE**

Previous Meeting
Recap

Krum ISD Finance &
Bonding Capacity

Understanding Project
Budgets

Long-Term Facility Plan

Meeting Wrap-up

TONIGHT'S AGENDA



A blue-tinted background image of a marching band in a stadium. The band members are wearing uniforms and playing brass instruments, including tubas and euphoniums. They are standing on a field with stadium seating visible in the background.

PREVIOUS MEETING RECAP

BOND PLANNING PROCESS



Bond Planning
Committee
convenes

Committee studies
district finances,
facilities, solutions
and costs

Committee
prioritizes needs
and reaches
consensus

Committee makes
recommendation
to the Board of
Trustees

Board of
Trustees calls
an election

Communications
campaign to
educate voters

Early Voting

Election Day

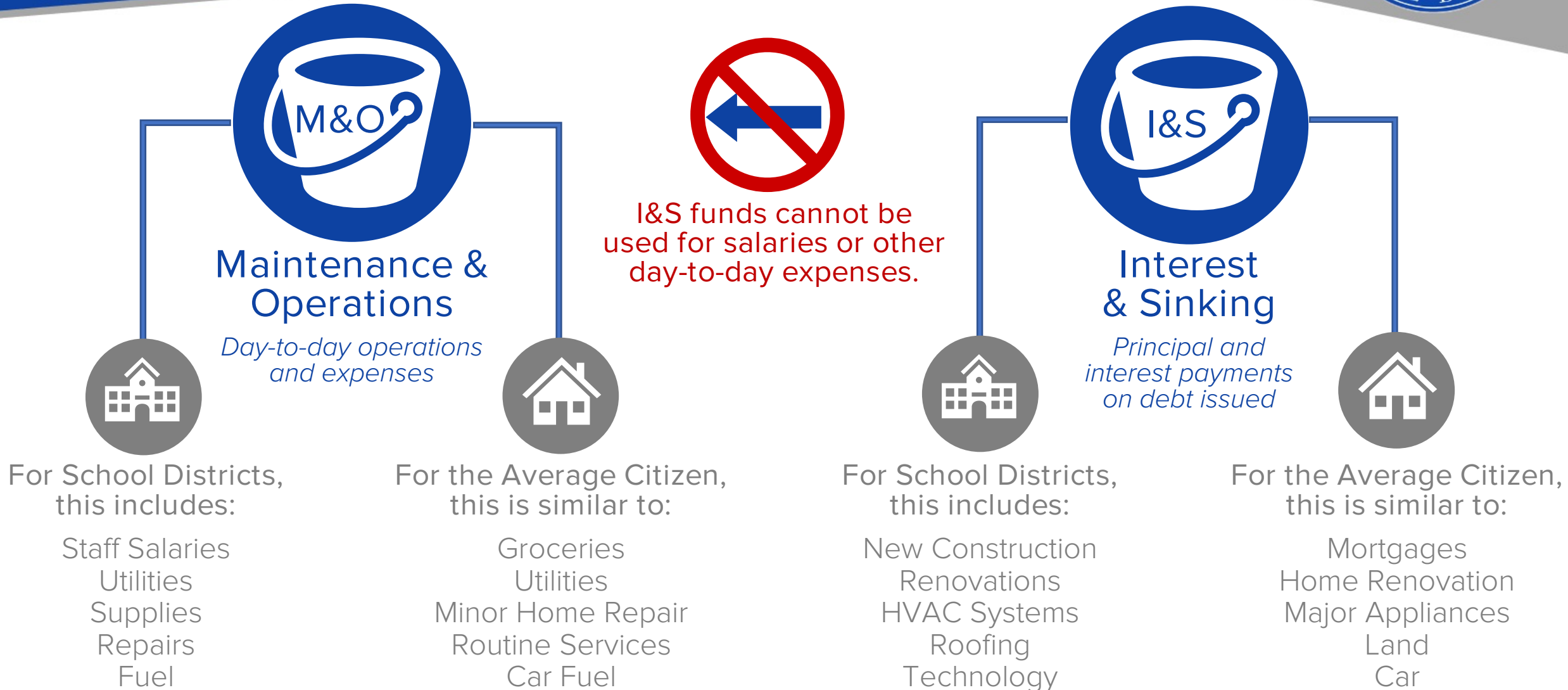
CAMPUS CONSIDERATIONS



Things to consider throughout the planning process:

- EEC – master planned to be expanded and added on to
- Dyer – not recommended for expansion
- Dodd & MS – challenge: proximity to 1173
- KHS – difficult for expansion

SCHOOL TAX RATE



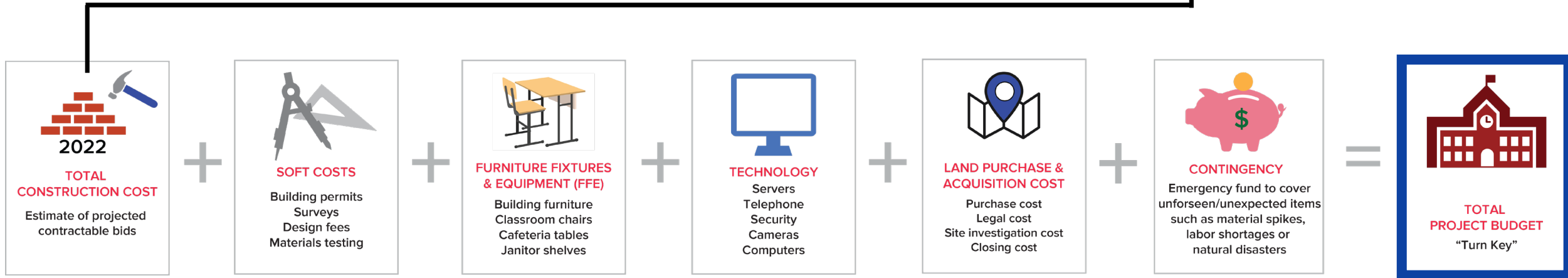
A blue-tinted background image of a classroom. Students are seated at desks, some with their hands raised. In the background, a whiteboard is visible with handwritten text. The text on the whiteboard includes 'Sound', 'Play/Invent', 'Mechanical', 'Light', 'We will', 'So I can', 'I'll know I'm successful', 'ELAP', 'Math', 'Science', and 'Social'.

KRUM ISD FINANCE & BONDING CAPACITY



UNDERSTANDING PROJECT BUDGETS

BUILDING A TOTAL BOND PROJECT BUDGET



A blue-tinted photograph of three students sitting at a table, focused on their work. They are holding markers and looking at papers. The image has a semi-transparent blue overlay.

LONG-TERM FACILITY PLAN

CURRENT GRADE ALIGNMENT



Krum Early
Education
Center



Pre-K – 1st

Hattie Dyer
Elementary
School



2nd – 5th

Blanche Dodd
Elementary
School



2nd – 5th

Krum Middle
School



6th – 8th

Krum High
School



9th – 12th

PROPOSED GRADE ALIGNMENT



EE – Pre-K



K – 5th



6th – 8th



9th – 12th

FACILITY CAPACITIES



	EEC	DYER ELEMENTARY	DODD ELEMENTARY	KRUM MIDDLE SCHOOL	KRUM HIGH SCHOOL
	PreK – 1 st	2 nd – 5 th	2 nd – 5 th	6 th – 8 th	9 th – 12 th
Maximum Capacity	709	618	680	807	1,146
Functional Capacity	625	568	612	646	860
Current Student Enrollment	384	325	287	534	670

PRELIMINARY POTENTIAL GROWTH



	EE and Pre-K	K – 5 th	6 th – 8 th	9 th – 12 th
Current Student Enrollment	91	905	534	671
Potential Expected Growth (2029-2030)	270-278	2,800-3,300	1,200-1,700	1,160-1,500

**Growth projections being confirmed with demographic study*

SCENARIO FOR CONSIDERATION



		CURRENT	SCENARIO FOR CONSIDERATION
	Dyer	2 nd – 5 th	
	EEC	Pre-K – 1 st	
	Dodd	2 nd – 5 th	
	Krum MS	6 th – 8 th	
	Krum HS	9 th – 12 th	

SCENARIO FOR CONSIDERATION



Dyer

2nd – 5th

Daycare / EE / Pre-K



EEC

Pre-K – 1st

K – 5th



Dodd

2nd – 5th

K – 5th



New Campus

K – 5th



New Campus

K – 5th



Krum MS

6th – 8th

Elem / Future 6th Campus



Krum HS

9th – 12th

6/8 Campus /
Eventually 7/8 Campus



New Campus

9th – 12th

The background of the slide is a blue-tinted photograph of a tiger mascot. The mascot is wearing a white athletic jersey with the letters "BFND" and the number "12" printed on it. It is standing on a running track, and a crowd of spectators is visible in the background. The word "QUESTIONS?" is centered over the image in white, bold, sans-serif capital letters, flanked by two horizontal white lines.

QUESTIONS?



KRUM ISD

**BOND PLANNING
COMMITTEE**