



KRUM ISD

**BOND PLANNING
COMMITTEE**

Welcome &
Introductions

May 25 Meeting Recap

Bond Basics

Understanding School
Finance

Meeting Wrap-up

TONIGHT'S AGENDA





WELCOME & INTRODUCTIONS

INTRODUCTIONS



Name



Years as a Krum ISD resident




Profession / role(s) in the community



Children / grandchildren in the district



Where you graduated high school

A blue-tinted photograph of a classroom. In the background, a whiteboard is divided into columns with labels: 'Sound', 'Heat/Infrared', 'Mechanical', 'Light', 'ELAP', 'Math', 'Science', and 'Social'. The 'ELAP' column has sub-headers 'We will', 'So I can', and 'I'll know I'm successful'. The 'Math' column has sub-headers 'I can understand how to... by using their mathematical strategies'. The 'Science' column has sub-headers 'I can understand how to... by using their mathematical strategies'. The 'Social' column has sub-headers 'I can understand how to... by using their mathematical strategies'. In the foreground, several students are seated at desks, with their hands raised in the air. The text 'MAY 25 MEETING RECAP' is overlaid in the center in white, bold, sans-serif font, flanked by two horizontal white lines.

MAY 25 MEETING RECAP

DISTRICT OVERVIEW



Krum Early Education Center: PreK – 1st



Hattie Dyer Elementary School: 2nd – 5th



Blanche Dodd Elementary School: 2nd – 5th



Krum Middle School: 6th – 8th



Krum High School: 9th – 12th



>100
square
miles



>2,200
students



149%
enrollment
increase in
last 20 yrs.

KISD BOND HISTORY



FEB
2000

- PASSED: \$8,600,000
- DEFEATED: \$1,400,000

SEPT
2003

- PASSED: \$8,000,000

MAY
2006

- DEFEATED: \$25,000,000

NOV
2006

- PASSED: \$13,200,000
- DEFEATED: \$6,100,000
- PASSED: \$7,400,000

NOV
2007

- PASSED: \$7,500,000

COMMITTEE CHARGE



- 1** Consider the educational needs of all students and **align with the district's mission, vision and goals**
- 2** **Represent the entire community**, its values and perceptions in the facility-planning process
- 3** **Assess and prioritize** the district's **current and long-term facility needs**, including new construction, renovations and capital improvements
- 4** **Bring forward recommendations to the Board of Trustees** as to how to address the district's facility needs, including what should be included and how much money should be requested in a possible bond election

COMMITTEE ROLES



Role of the Co-Chairs:

- Facilitate large group discussions.
- Ensure all ideas and/or positions of committee members are heard and given equal time.
- Maintain group focus and guide committee to its goals.
- Give formal presentation to Krum ISD Board of Trustees with the BPC's final recommendations.

Role of the Secretary:

- Take notes/minutes of each planning meeting

BOND PLANNING PROCESS



Bond Planning
Committee
convenes

Committee studies
district finances,
facilities, solutions
and costs

Committee
prioritizes needs
and reaches
consensus

Committee
makes
recommendation
to the Board

Board of
Trustees calls
an election

Communications
campaign to
educate voters

Early Voting

Election Day

CAMPUS CAPACITIES



	EEC	DYER ELEMENTARY	DODD ELEMENTARY	KRUM MIDDLE SCHOOL	KRUM HIGH SCHOOL
	PreK – 1 st	2 nd – 5 th	2 nd – 5 th	6 th – 8 th	9 th – 12 th
Functional Capacity	625	568	612	646	860
Current Student Enrollment	384	325	287	534	670

CAMPUS CONSIDERATIONS



Things to consider throughout the planning process:

- EEC – master planned to be expanded and added on to
- Dyer – not recommended for expansion
- Dodd & MS – challenge: proximity to 1173
- KHS – difficult for expansion

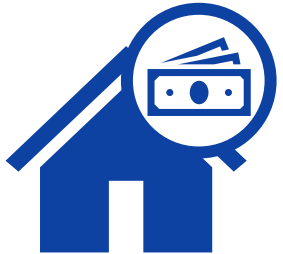


BOND BASICS

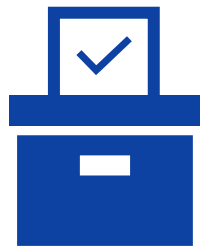
WHAT IS A BOND?



A bond is a debt investment in which an investor loans money to a school district, with interest, for a defined period of time.



A bond is similar to a home mortgage. It is a contract to repay borrowed money with interest over time.



Bond elections allow communities to vote to give the Board of Trustees authority to sell bonds to pay for items such as new school construction, renovations, capital projects, and land acquisition.

Bonds are repaid from a district's Interest & Sinking funds.

A blue-tinted photograph of three students sitting at a table, focused on their work. They are holding markers and looking down at papers or a tablet. The image is used as a background for the title.

UNDERSTANDING SCHOOL FINANCE

SCHOOL TAX RATE



Maintenance & Operations

Day-to-day operations and expenses



For School Districts,
this includes:

- Staff Salaries
- Utilities
- Supplies
- Repairs
- Fuel



For the Average Citizen,
this is similar to:

- Groceries
- Utilities
- Minor Home Repairs
- Routine Services
- Car Fuel



Interest & Sinking

Principal and interest payments on debt issued



For School Districts,
this includes:

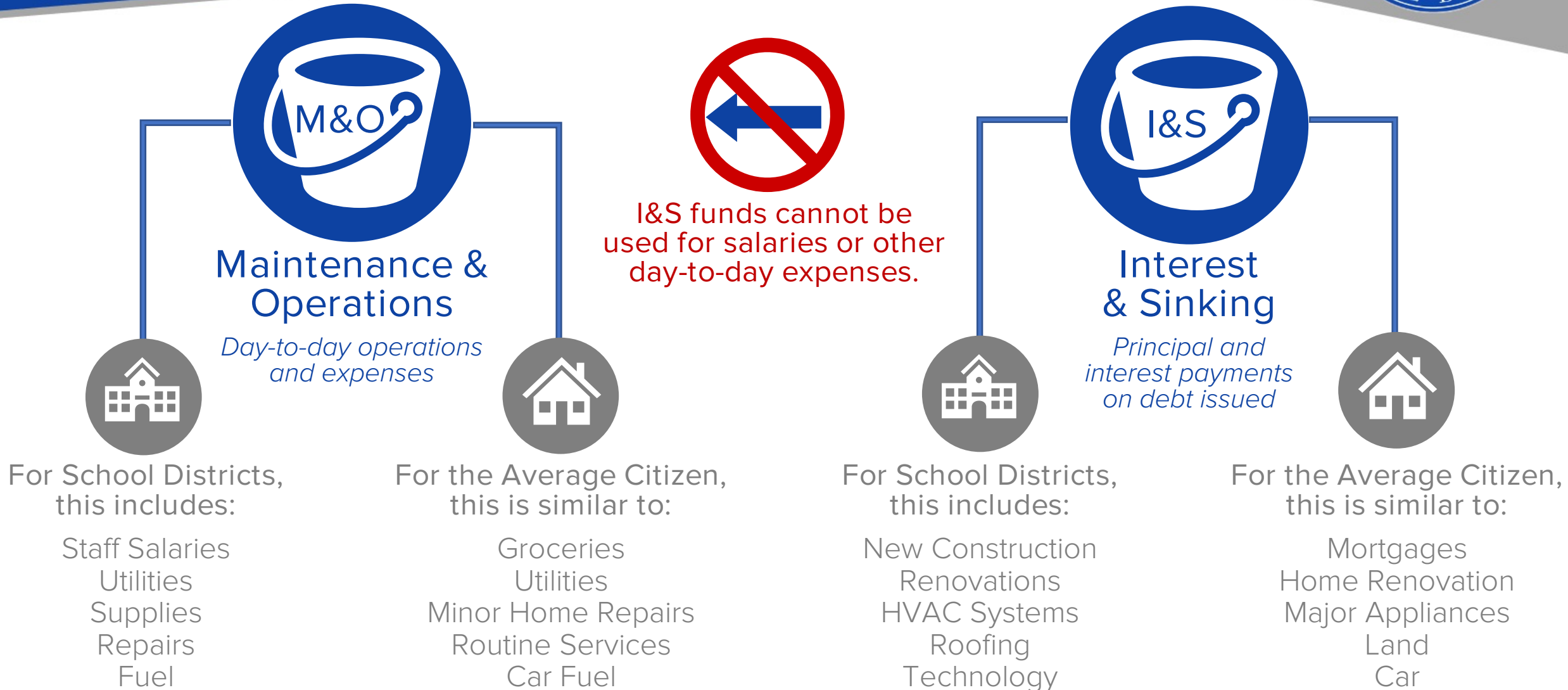
- New Construction
- Renovations
- HVAC Systems
- Roofing
- Technology



For the Average Citizen,
this is similar to:

- Mortgages
- Home Renovation
- Major Appliances
- Land
- Car

SCHOOL TAX RATE



KRUM ISD TAX RATE



$$\begin{array}{rcccl} \text{M\&O} & & \text{I\&S} & & \text{TOTAL} \\ \text{TAX RATE} & & \text{TAX RATE} & & \text{TAX RATE} \\ \hline \$0.96 & + & \$0.3846 & = & \$1.34 \\ & & & & \text{per \$100 of} \\ & & & & \text{property value} \end{array}$$

**Pending Board approval at next board meeting*

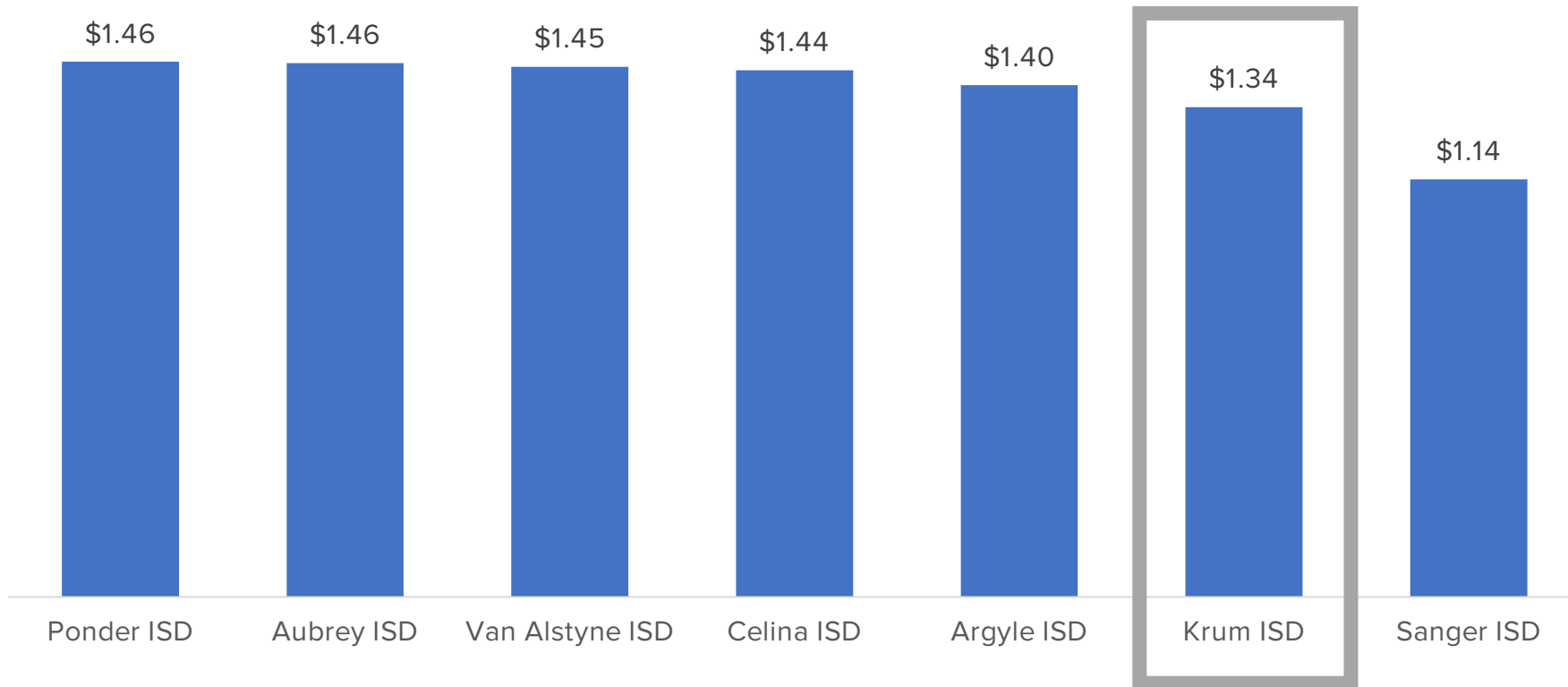
KRUM ISD TAX RATE HISTORY



DISTRICT COMPARISON



Area District Tax Rates



Last Bond Election	May 2021	Nov 2017	May 2021	May 2019	May 2017	Nov 2007	Nov 2006
--------------------	----------	----------	----------	----------	----------	----------	----------



QUESTIONS?



KRUM ISD

**BOND PLANNING
COMMITTEE**