

FORT WAYNE COMMUNITY SCHOOLS



WE ARE YOUR SCHOOLS

DARREN HESS, Director of Facilities

FACILITIES DEPARTMENT UPDATE
OCTOBER 24, 2022

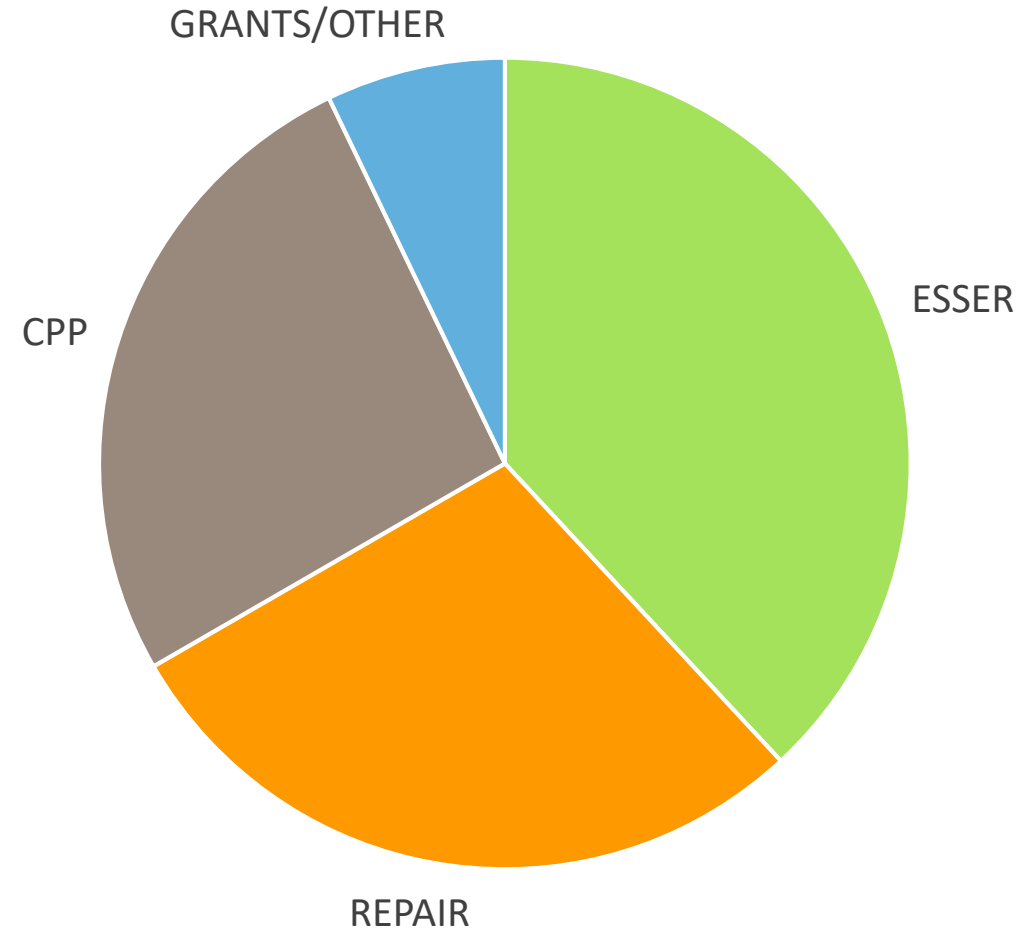
- ***2022 CONSTRUCTION RECAP***
- ***2023 CONSTRUCTION SUMMARY***
- ***RISING TO THE CHALLENGES OF THE CURRENT
CONSTRUCTION MARKET***

The background is a light blue-grey color with a repeating pattern of white line-art icons representing various school supplies. These icons include apples, pencils, pens, paper planes, light bulbs, backpacks, flasks, rulers, triangles, glasses, books, trophies, globes, and notebooks.

2022 CONSTRUCTION RECAP

2022 CONSTRUCTION PROJECTS

- 43 Individual active projects with a construction value greater than \$150,000
 - 16 ESSER
 - 13 REPAIR Program
 - 11 CPP
 - 3 Grants/Other Programs
- Total construction dollar value of \$72,855,000*



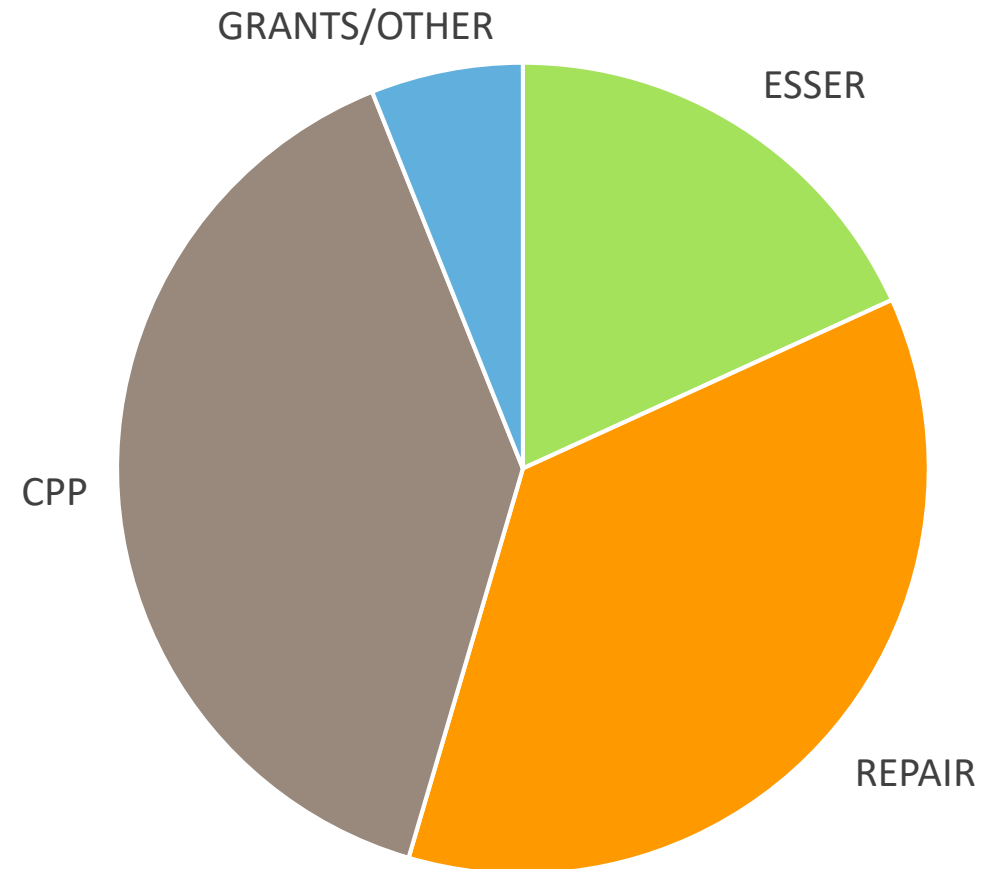
**Does not include furnishings and loose equipment, separate security and technology infrastructure contracts, design fees, financing, or other overhead/soft costs.*



2023 CONSTRUCTION

2023 CONSTRUCTION PROJECTS

- 33 Individual active projects with a construction value greater than \$150,000
 - 6 ESSER
 - 12 REPAIR Program
 - 13 CPP
 - 2 Grants/Other Programs
- Total estimated construction dollar value of \$68,077,000*



**Does not include furnishings and loose equipment, separate security and technology infrastructure contracts, design fees, financing, or other overhead/soft costs.*

The background is a solid blue color with a repeating pattern of white line-art icons. These icons include various school supplies like pencils, pens, erasers, and notebooks, as well as science-related items like beakers, flasks, and globes. There are also sports-related icons like a basketball and a trophy, and other items like a magnifying glass, a ruler, and a paint palette.

RISING TO THE CHALLENGE

Reductions in local available labor force due to both attrition and oversaturation of labor market leading to lack of bid participation.

FORT WAYNE NEW CONSTRUCTION

(Electric Works 582,833 SF)

NEW CONSTRUCTION

Square Footage

1,000,000

900,000

800,000

700,000

600,000

500,000

400,000

300,000

200,000

100,000

0

2017

2018

2019

2020

2021

2022

Year

Sq. Ft.

2017

77,536

2018

57,000

2019

86,542

2020

160,591

2021

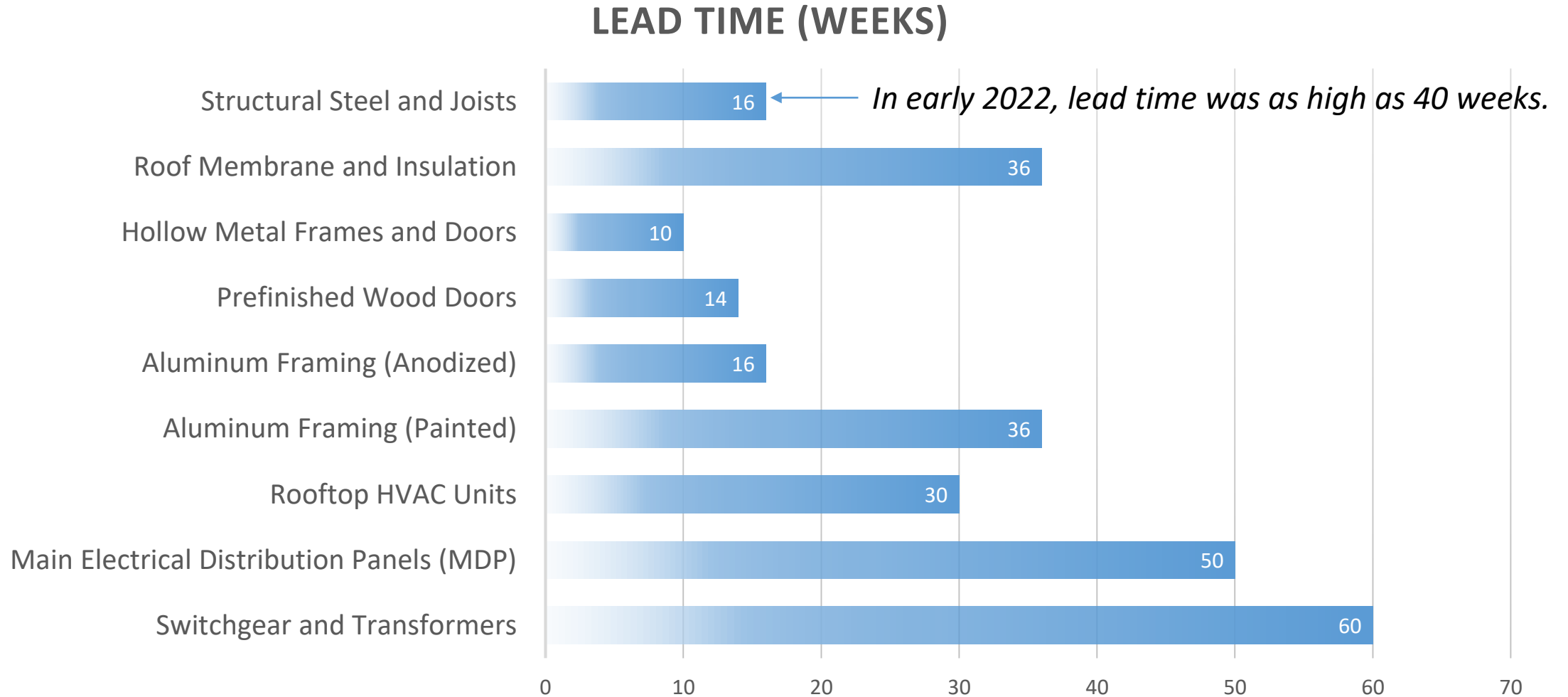
101,210

2022

975,696

**Graph/Data as provided to the Fort Wayne Business Forum by The Zacher Company, September 21, 2022.*

CHALLENGE: MATERIAL LEAD TIMES



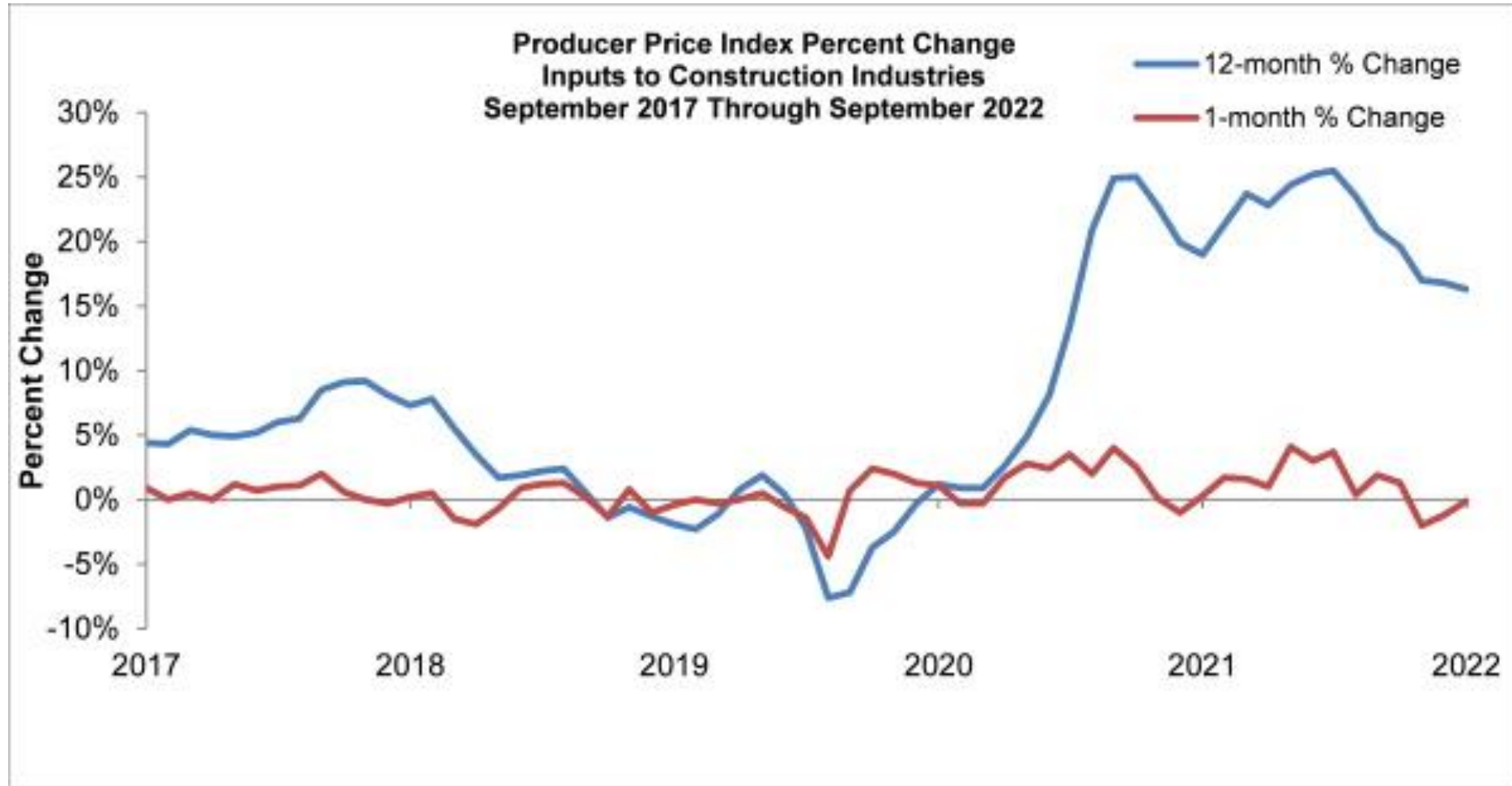
CHALLENGE: COST INCREASES AND MARKET VOLATILITY

Producer Price Index, September 2022

	1-Month % Change	12-Month % Change	% Change Since Feb 2020
Inputs to Construction	-0.1%	16.3%	40.5%
Inputs to Nonresidential Construction	-0.1%	15.9%	40.8%
Plumbing Fixtures and Fittings	1.1%	11.6%	16.3%
Fabricated Structural Metal Products	-0.2%	14.0%	54.2%
Iron and Steel	-5.4%	-12.8%	69.2%
Steel Mill Products	-6.7%	-14.3%	91.3%
Nonferrous Wire and Cable	-0.4%	4.6%	41.7%
Softwood Lumber	-4.6%	14.5%	36.5%
Concrete Products	1.0%	14.3%	23.1%
Prepared Asphalt, Tar Roofing & Siding Products	0.8%	15.3%	36.2%
Crude Petroleum	-3.4%	29.1%	84.3%
Natural Gas	3.1%	106.5%	497.6%
Unprocessed Energy Materials	0.5%	66.6%	193.3%

Source: U.S. Bureau of Labor Statistics

CHALLENGE: COST INCREASES AND MARKET VOLATILITY



Source: U.S. Bureau of Labor Statistics

PROJECT SCHEDULE ADJUSTMENTS

POSTPONED PROJECTS (moved to 2023)

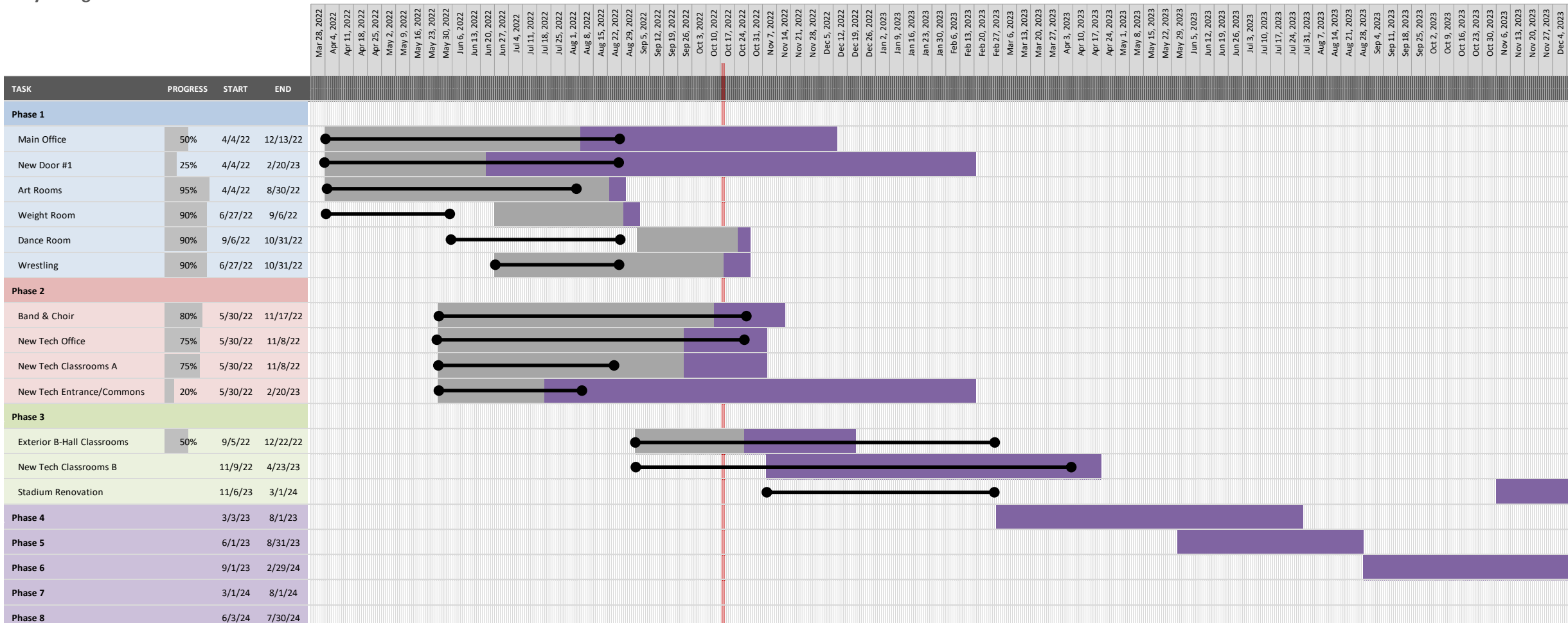
- Adams Elementary Office Addition and Corridor Improvements
- Kekionga & Portage Middle Schools – Various Improvements
- Lakeside & Northwood Middle Schools – Various Improvements
- Wayne High School Softball Field Improvements
- Forest Park Elementary Office/Door 1 Entrance and Accessibility Improvements



WE ARE YOUR SCHOOLS

PROJECT SCHEDULE ADJUSTMENTS

Wayne High School Renovation





WE ARE YOUR SCHOOLS

PROJECT SCHEDULE ADJUSTMENTS

PROJECT	% COMPLETE	FACTORS
CPP GBS 1 – Casework	66%	Material delays due to repeated order cancellation by material suppliers.
CPP GBS 2 – Doors	70%	Material lead time increased from 10-12 weeks at time of bid to 16-24 weeks.
CPP Flooring Replacements	100%	Material delivery delays of 3-4 weeks.
CPP Grile Conference Center	50%	Project start was delayed until after start of school year due to availability of labor.
CPP Electrical (South Side and North Side)	75%	Lighting delayed by several weeks. Generator delivery delayed by 4+ months. Fire Alarm components delayed by 2+ months.
CPP Mechanical (Chillers)	25%	Equipment lead time increased from 12 weeks to 13+ months.
CPP PA Replacements	100%	Start delayed by approximately 4 weeks due to material delays.
CPP Roof Replacements	100%	Labor shortage caused some production delays. No significant impact.
ESSER 2022 Air Handling Units	33%	Equipment lead time increased from 8-12 weeks to 13+ months.
ESSER 2022 Ventilation Projects	90%	Minor material delays, labor availability affecting final completion.

**All projects listed would typically be complete by start of school year.*

RISING TO THE CHALLENGE

MINDFUL MATERIAL SELECTION

- Consideration of alternate materials, finishes, and systems to select items of equal quality with reduced delivery lead times

EARLY PROCUREMENT

- Accelerated design and bidding schedule in comparison with previous years
- Early communication with Contractors to increase awareness of upcoming bid projects and construction schedule constraints

SCHEDULE FLEXIBILITY

- Consideration of flexibility in working hours to allow some construction activities to occur during school day
- When funding use deadlines allow, consideration of lengthened construction timelines to allow for longer material lead times.

ALTERNATE METHODS OF PROCUREMENT

- Break out specialty items that can be procured through purchasing cooperatives with lower, locked in pricing and overhead costs
- Use of CMc contract procurement to aid in establishment of early bid packages, material only bid packages, etc.



WE ARE YOUR SCHOOLS

Thank you