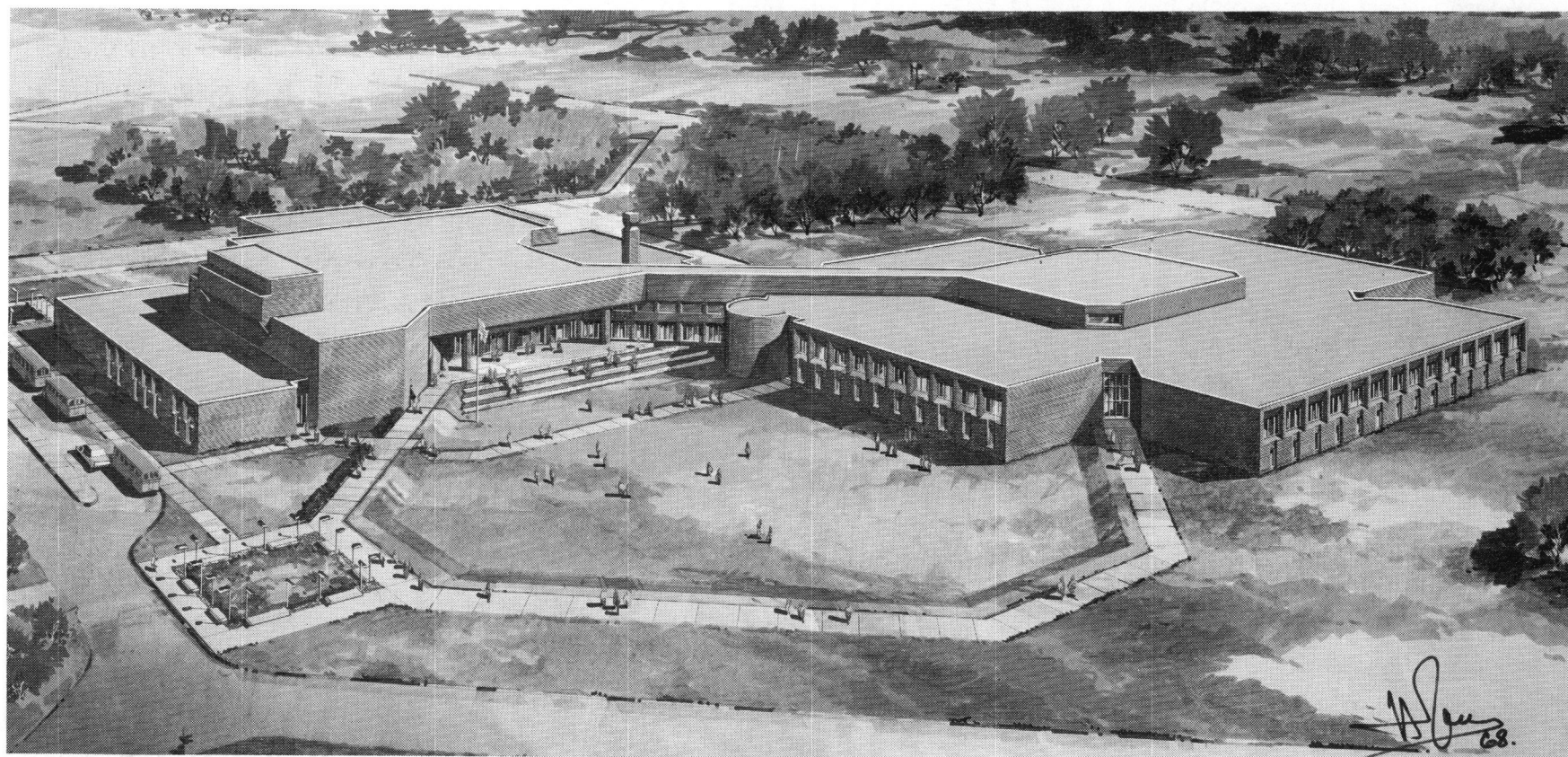


Dedication

NORTHROP HIGH SCHOOL

7001 COLDWATER ROAD • FORT WAYNE, INDIANA



SUNDAY, APRIL 23, 1972 • 2:00 P. M.

To: *The Citizens and Patrons of Fort Wayne Community Schools*

Your Board of School Trustees and the officers and members of the Fort Wayne Community School Building Corporation are proud to present to the community the Milton H. Northrop High School. This new facility represents many years of planning and the cooperative efforts of a vast number of citizens, teachers and school officials.

We are pleased that we could have a part in helping to provide this new high school for the young people of this community. Excellent facilities such as Northrop High School are evidence of this community's commitment to quality educational opportunities for its youth.

THE FWCS BUILDING CORPORATION

R. Nelson Snider	<i>President</i>
Leslie S. Fry	<i>Vice-President</i>
Mrs. John Cooper	<i>Secretary</i>
J. Wilbur Haley	<i>Treasurer</i>
Charles E. Slater	<i>Member</i>

THE BOARD OF SCHOOL TRUSTEES

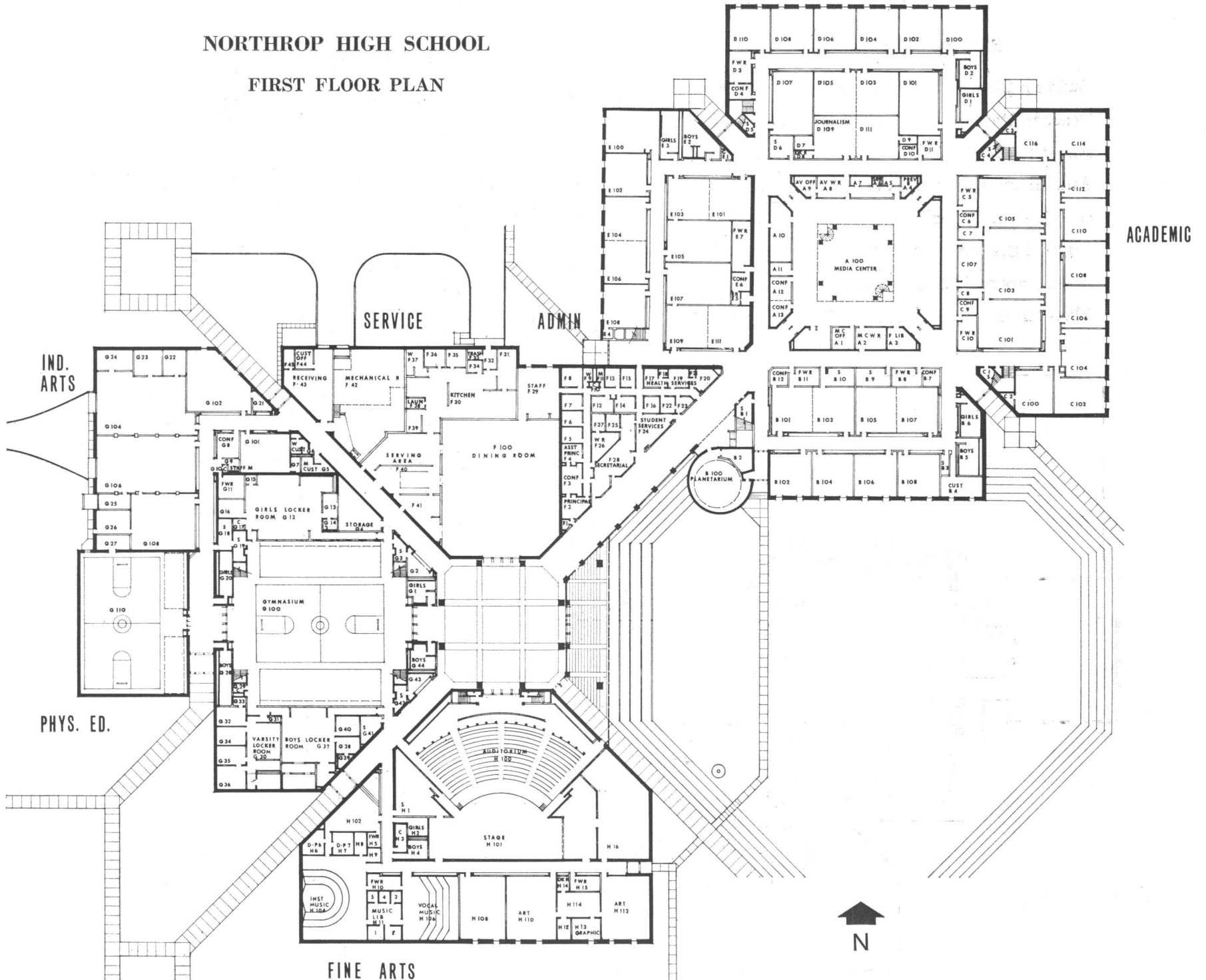
W. Lloyd Bridges	<i>President</i>
Thomas S. Teetor	<i>Vice-President</i>
Mrs. Karl C. Eberly, Jr.	<i>Secretary</i>
Max G. Scott	<i>Member</i>
Bernard K. Stuart	<i>Member</i>
Martin P. Torborg	<i>Member</i>
Eugene A. Yergens	<i>Member</i>

Program

"Star Spangled Banner"	<i>Combined Northrop High School Concert and Varsity Bands Donovan Gerig, Director</i>
Invocation	<i>Rev. Lowell Townsend Pastor, Taylor Chapel United Methodist Church</i>
"Honor and Glory"	<i>Northrop Concert Choir Willard Holloway, Director Lee Wells, Accompanist</i>
"God of Love, King of Peace"	<i>Northrop Concert Choir</i>
Introduction of Guests	<i>H. Paul Spuller, Principal</i>
Speaking for:	
Parents	<i>Mrs. Kenneth Oliver President, Northrop PTSA</i>
Teachers	<i>Mrs. John Thompson</i>
Students	<i>Steven Williamson</i>
School Administration	<i>Lester L. Grile, Superintendent</i>
Tribute to Milton H. Northrop	<i>Mrs. Anthony Martone</i>
Presentation of Milton H. Northrop Portrait	<i>Dr. Bill Anthis, President Fort Wayne Rotary Club</i>
Presentation of Building	<i>Richard D. Shultz, Architect Schenkel, Shultz and Hodge, Inc.</i>
Acceptance of Building	<i>R. Nelson Snider, President FWCS Building Corporation Dr. W. Lloyd Bridges, President FWCS Board of School Trustees</i>
Northrop Alma Mater	<i>Northrop Music Department</i>
Benediction	<i>Rev. John Dixie, Pastor Pilgrim Baptist Church</i>
Tour of Building and Stadium Facilities	

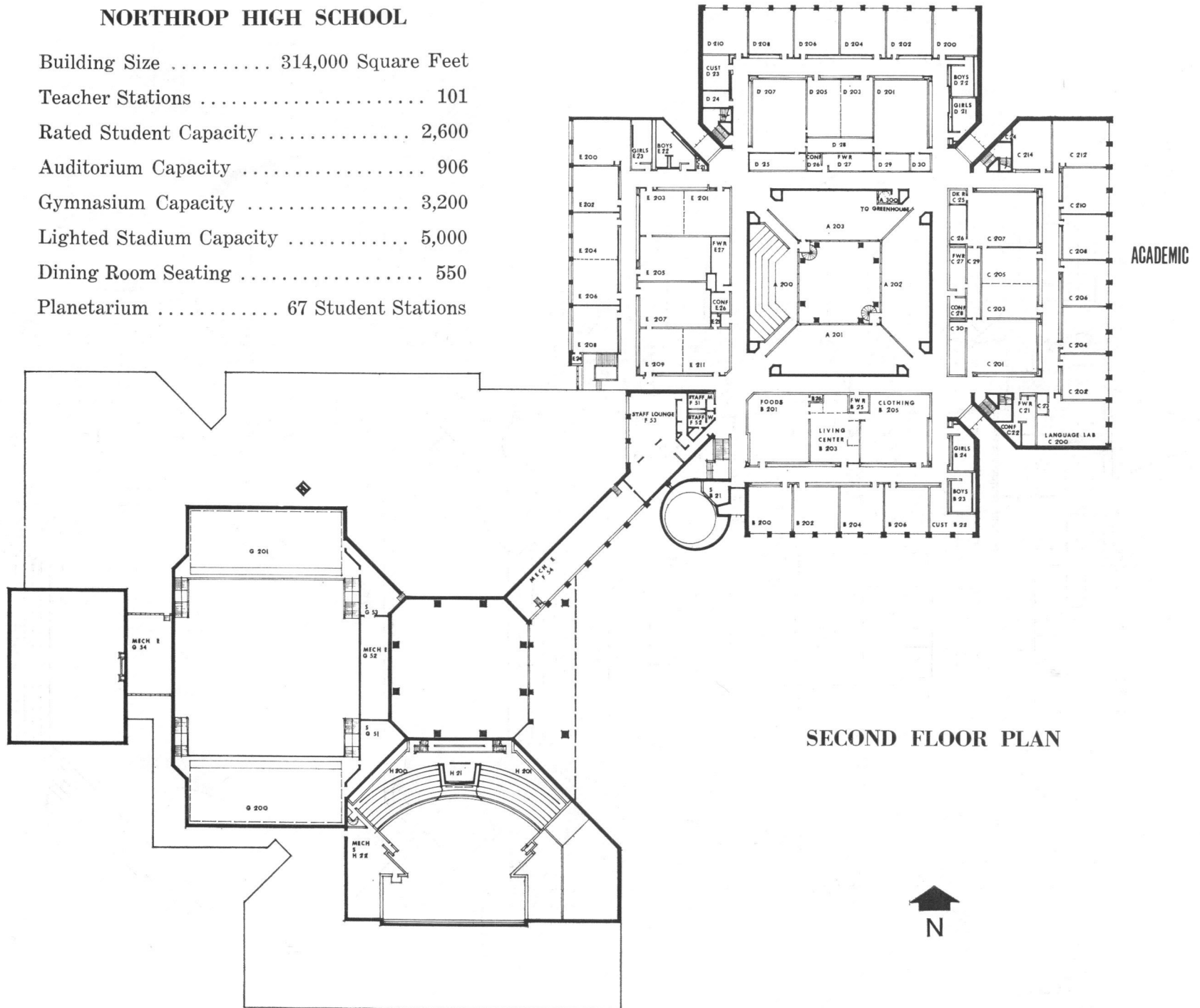
NORTHROP HIGH SCHOOL

FIRST FLOOR PLAN



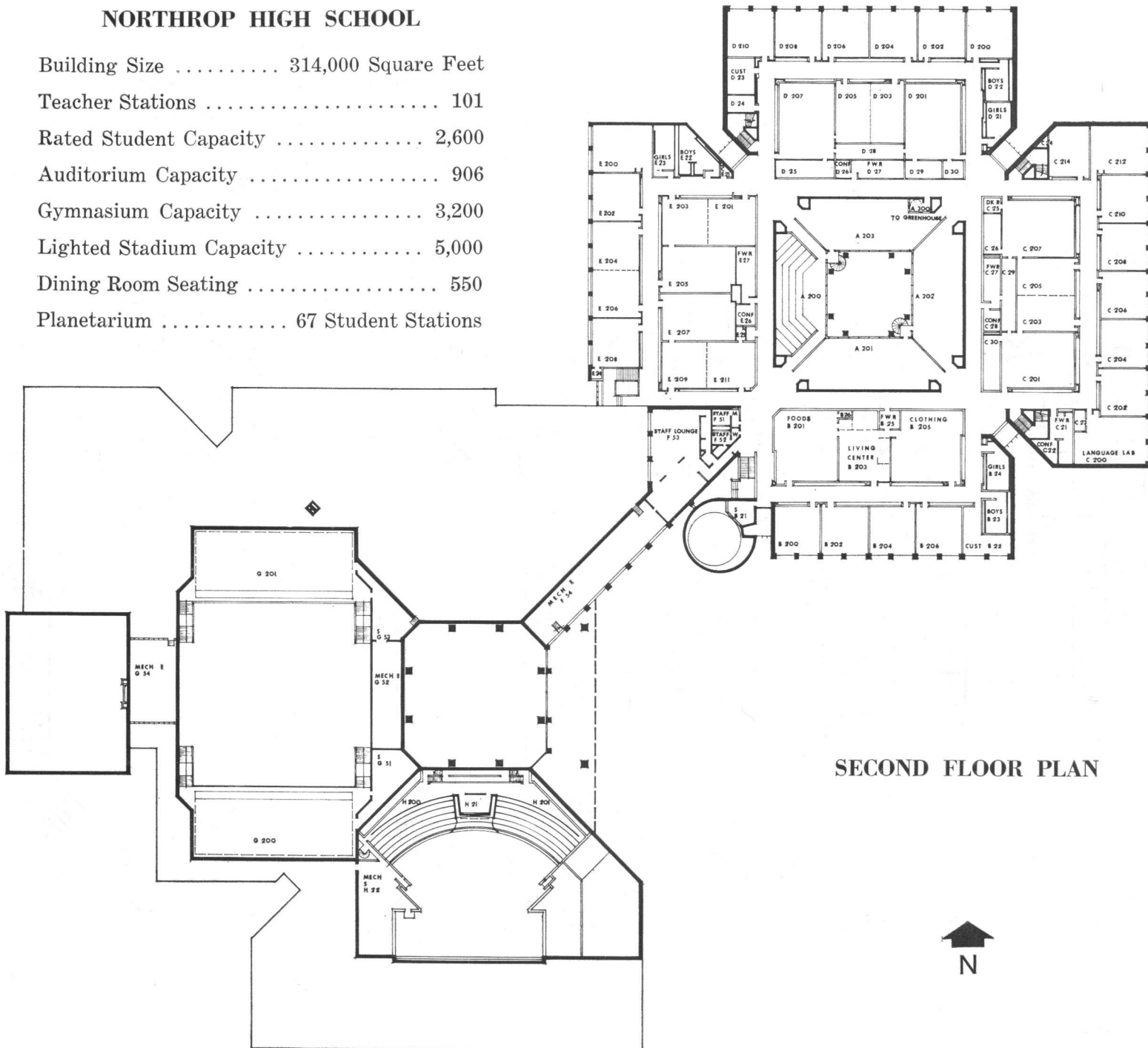
NORTHROP HIGH SCHOOL

Building Size 314,000 Square Feet
 Teacher Stations 101
 Rated Student Capacity 2,600
 Auditorium Capacity 906
 Gymnasium Capacity 3,200
 Lighted Stadium Capacity 5,000
 Dining Room Seating 550
 Planetarium 67 Student Stations



NORTHROP HIGH SCHOOL

Building Size 314,000 Square Feet
 Teacher Stations 101
 Rated Student Capacity 2,600
 Auditorium Capacity 906
 Gymnasium Capacity 3,200
 Lighted Stadium Capacity 5,000
 Dining Room Seating 550
 Planetarium 67 Student Stations



SECOND FLOOR PLAN



NORTHROP HIGH SCHOOL

7001 COLDWATER ROAD • FORT WAYNE, INDIANA 46625 • PHONE 219/489-4548

General Building Information

Northrop High School, which is constructed on a 77.5 acre site on the far north side of the Fort Wayne Community Schools' district, has been designed around a "dual-core" concept which divides the building into two clusters — the quiet, academic area and facilities for the more activity-oriented programs. The administrative complex extends along a concourse between the two cores near the center of the building.

ACADEMIC AREA

The academic area resolves into four quadrants which surround a two-level learning resource complex. Interior spaces of the quadrants contain both regular academic classrooms and flexible-use laboratory suites. Included are four science laboratories and a greenhouse, two reading and one language laboratory, three home economics laboratories, and 16 classrooms with operable walls.

LEARNING RESOURCE COMPLEX

Seating for 220 students is provided in the learning resource complex where the media center contains 30,000 volumes plus additional media storage. This complex also includes an audiovisual center, conference rooms, staff reading room, office and workroom areas, and a facility for a future television studio. Spiral stairs lead to three large open instructional areas and a 138-seat tiered lecture room.

ACTIVITY-ORIENTED FACILITIES

Adjacent to the academic area and administrative complex is the "commons" into which the main entry of the school leads. The large "com-

mons" area serves as a student forum and casual meeting place for student interaction as well as a lobby space for large-group or public functions. The "commons" is the core for such facilities as the auditorium, cafeteria, gymnasium, physical education facilities, four industrial arts laboratories, two music laboratories, three arts and crafts studios, and a dramatics room. The balcony of the auditorium converts into two 115-seat lecture areas, while the main floor seats 676 persons. Thus, the auditorium has a total seating capacity of 906 for school and community programs and assemblies.

THE PLANETARIUM

The planetarium is easily identifiable by its cylindrical shape and is located prominently off the front entrance court to provide ease of accessibility to students coming to Northrop High School from other schools. The planetarium has 67 student stations and will serve elementary and secondary students from schools throughout the northern half of the Fort Wayne Community Schools' district.

ATHLETIC FACILITIES

Northrop has a lighted stadium with seating for 5,000 spectators. Other senior high schools also will schedule numerous football games and other activities at this facility. Dressing rooms, storage, rest rooms, concession stands, and mechanical facilities are included in the 14,000 square feet of enclosed area. An all-weather track, one baseball and two softball diamonds, four tennis courts, a practice field, an open activity area, and paved parking for 1,000 cars comprise the remainder of the school's site.