

JUSTIN N. STUDY

... building having floor and roof of independent construction but  
with only one means of egress from the second floor.  
... boiler and fan room located in small basement. Upper floor con-  
tains class rooms. Auditorium is located on first floor.  
... very good throughout.

JUSTIN N. STUDY SCHOOL

... floor, creating  
... on the north end of the second floor. All  
... because they do not extend to full width  
... of the corridors and are partially blocked by vestibules.

Richard E. Shriner, Principal

2430 Brooklyn Avenue

1931

... fire  
... in roof space.

SPECIAL FEATURES

...

... fire  
...

... fire  
... fire alarm box near school.

RECOMMENDATIONS

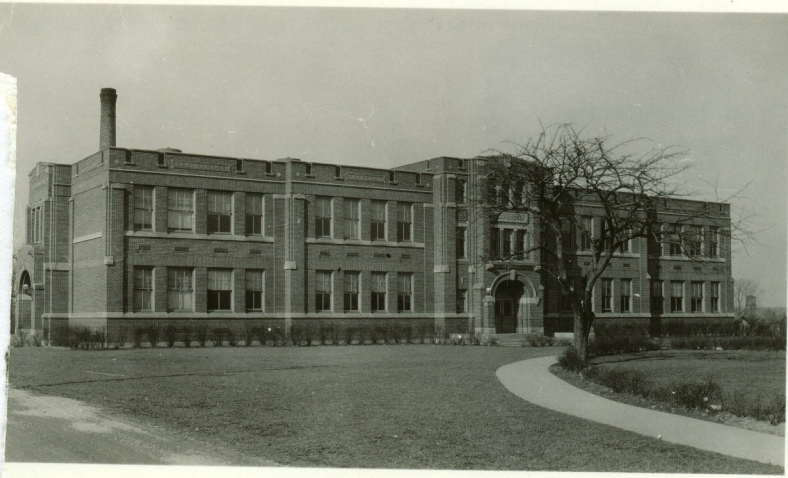
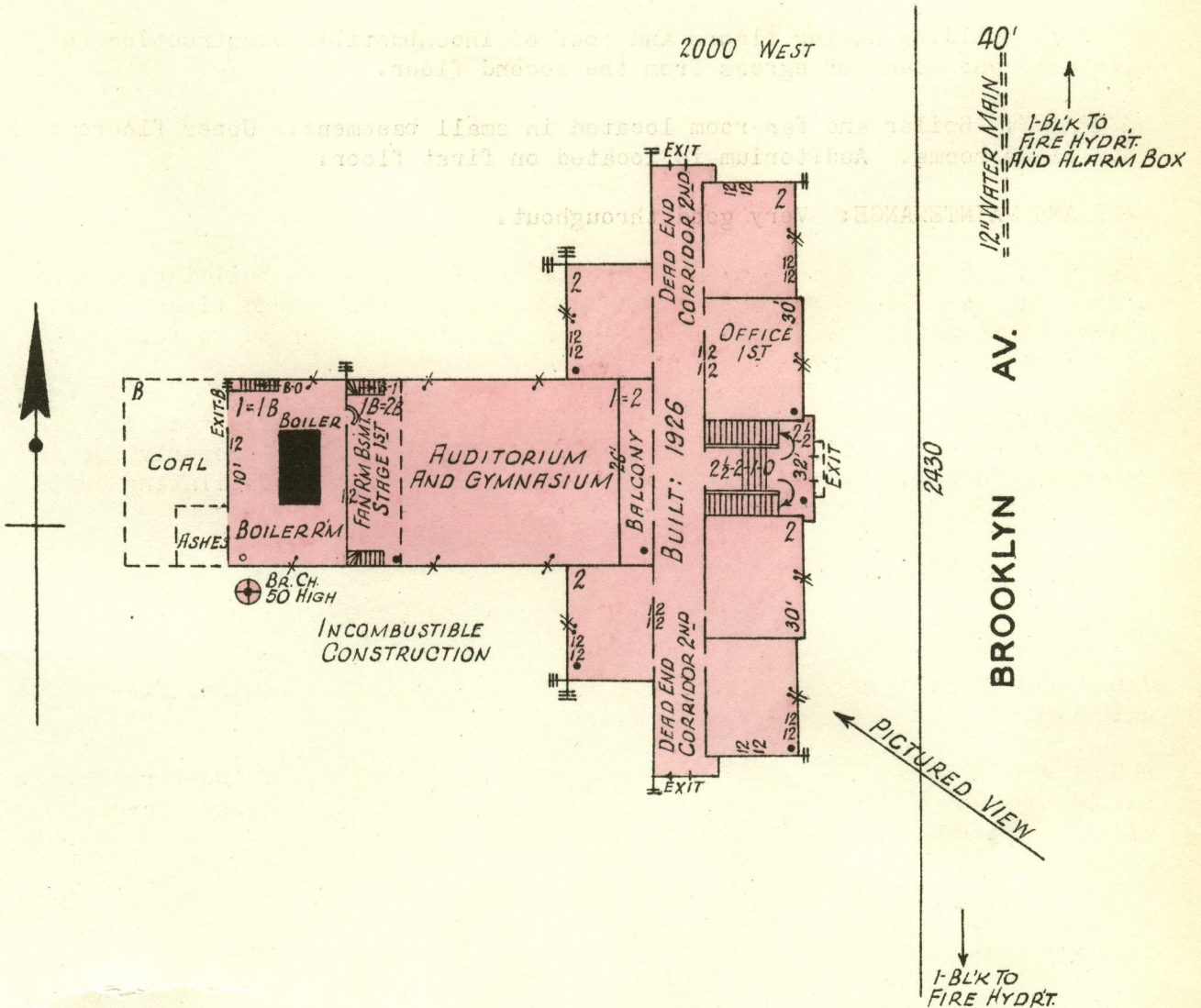
... fire  
... fire alarm box near school.

REPORTS COMPLETED

Originally Erected	1926
Number of Class Rooms	9
No Special Rooms	
Enrollment	280

# JUSTIN N. STUDY SCHOOL

SCALE: 1 IN. = 50 FT.



SOUTH EAST VIEW

- ERECTED: 1926.
- CONDITION: EXCELLENT.
- HEIGHT: TWO AND ONE STORY.
- AREA: BSMT. 2,600 SQ. FT., 1ST FLR. 13,500 SQ. FT., 2ND FLR. 9,000 SQ. FT.
- WALLS: 8" HOLLOW TILE FACED WITH 4" BRICK.
- FLOORS: CONC. ON UNEXPOSED STEEL (METAL LUMBER)
- ROOF: SAME AS FLOORS.
- FLOOR OPENINGS: OPEN STAIRWAYS - ONE, BSMT TO 1ST FLR. ONE, 2ND FLR TO 1ST FLR.
- HEAT: STEAM - LOW PRESSURE BOILER.