

Fort Wayne Community Schools
educates all students to high standards
enabling them to become productive,
responsible citizens.

Whom do I call with questions?

Start by contacting your child's teacher,
guidance counselor, or the principal
at your child's school.

For additional help:

English Language Learners Department
260 • 467 • 2105

Academic Services
260 • 467 • 2845

Emily Schwartz Keirns - ELL Manager
260 • 467 • 2105
emily.keirns@fwcs.k12.in.us

FORT WAYNE COMMUNITY SCHOOLS

Dr. Wendy Robinson, Superintendent
English Language Learners Program

1200 S. Clinton St. • Fort Wayne, IN 46802

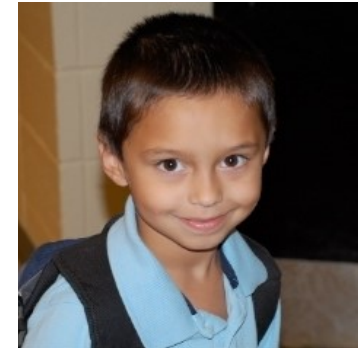
Phone: 260.467.2105

Fax: 260.467.1193

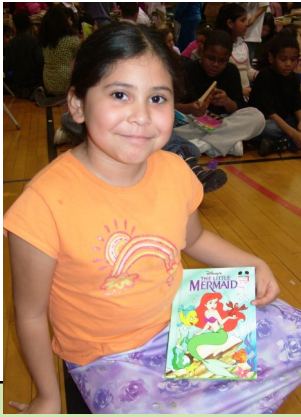
www.fortwayneschools.org

11/2017

ELL English Language Learners Program



WE ARE YOUR SCHOOLS



What is the English Language Learners program?

The Fort Wayne Community Schools English Language Learners (ELL) program serves students who are learning English as a second language by providing English language development support in all of our schools. More than 2,600 students qualify for participation in the ELL program. FWCS also provides interpreting and translation services in many languages for our families, which represent over 70 different languages.

Which schools offer ELL Programs?

All FWCS schools provide English language development instruction for English language learners. Indiana is a member of the WIDA (World-Class Instructional Design and Assessment) consortium, and all FWCS schools use the WIDA English Development Standards to guide language and content instruction for ELLs.

What is the goal of the ELL program?

To support ELL students in attaining English language literacy (speaking, listening, reading and writing) so that they can become independent learners as they achieve academic success.

How are students identified as English Language Learners?

Upon enrollment in an Indiana school, all families complete a Home Language Survey. Students whose Home Language Surveys indicate that they speak or have in their background a language other than English are assessed to determine their level of English proficiency. Students at proficiency levels 1 (entering) - 4 (expanding) qualify for ELL services.



What if I need an interpreter?

FWCS Multilingual Information Line
467-2009

Spanish Interpreting Line
(and to schedule interpreters for other languages)
467-1156

Burmese Interpreting Line
467-1059



When does a student exit the ELL program?

ELL students' level of English proficiency is assessed annually. Students are reclassified as fluent and are exited from the ELL program when they reach an overall proficiency of 5.0 (bridging) or higher on the annual WIDA ACCESS assessment.