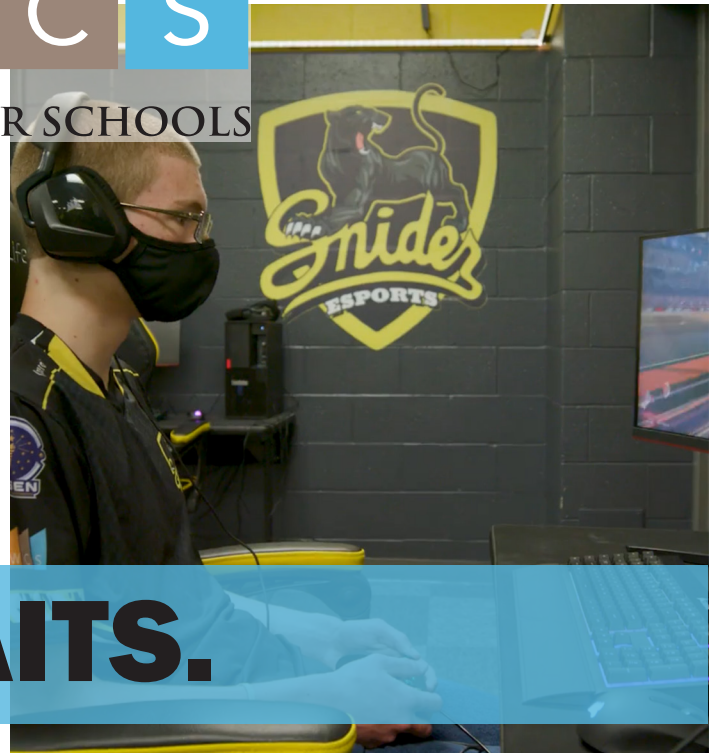


# YOUR OPPORTUNITY



F W C S  
WE ARE YOUR SCHOOLS



## AWAITS.

FORT WAYNE COMMUNITY SCHOOLS  
School Catalog | 2022-23

# DISTRICT PROFILE

## SUPERINTENDENT

Dr. Mark Daniel

## SCHOOLS AND STUDENTS

2021-22 Enrollment 28,650

14,015 students in pre-K through grade 5

6,401 students in middle school

8,234 students in high school

## STUDENT DEMOGRAPHICS

40% Caucasian

25% Black

19% Hispanic

10% Multi-racial

6% Asian

>1% Native American

62% eligible to receive free or reduced-priced meals

Over 70 languages spoken

### There are 52 schools in FWCS:

2 early learning centers (PreK-K)

30 elementary schools (K-5)

1 intermediate school (1-8)

10 middle schools (6-8)

5 high schools (9-12)

1 alternative school (6-12)

1 career and technical school (11-12)

1 Specialty High School Program (11-12)

1 Virtual Academy (K-12)

## BOARD OF SCHOOL TRUSTEES

Anne Duff.....President, At-Large

Maria Norman ..... Vice President, At-Large

Julie Hollingsworth ..... Secretary, District 1

Jennifer Matthias ..... Member, District 2

Noah Smith.....Member, District 3

Rohli Booker ..... Member, District 4

Stephen Corona..... Member, District 5

## CONTACT US

Information.....467-1000

Multilingual Information Line.....467-2009

Superintendent .....467-2025

Communications.....467-2020

Curriculum, Assessment and Instruction.....467-2845

Family and Community Engagement Center .....467-7250

Helen P. Brown Natatorium .....467-2660

Nutrition Services.....467-2055

Special Education.....467-1110

Transportation .....467-1900

FWCS Website .....www.fortwayneschools.org



## MISSION

Fort Wayne Community Schools educates all students to high standards enabling them to become productive, responsible citizens.

## VISION

Fort Wayne Community Schools will be the school system of choice and a source of community pride.

# GENERAL INFORMATION

## WELCOME TO FORT WAYNE COMMUNITY SCHOOLS

Fort Wayne Community Schools is THE choice district, offering high quality academics and an array of enrichment options outside the classroom.

## WHY CHOOSE FORT WAYNE COMMUNITY SCHOOLS?

There is no better place for your child to learn, grow and succeed than Fort Wayne Community Schools. Here is why:

- Every child matters deeply to us. We are committed to their well-being, safety and success. All means All!
- We expect excellence and set high standards for achievement.
- Students are encouraged to pursue their passions – we offer a variety of programs of choice and co-curricular activities to meet the needs of every student.
- Our schools are alive with diversity, which enhances the school experience as students learn to interact in a diverse environment and prepare for global citizenship in the United States and the world.
- Our dedicated, caring staff members are well-qualified and results-oriented individuals who help students achieve their full potential.
- We enable creative and innovative learning through technology to engage each student.
- We welcome and value parent and community involvement so everyone is included, recognized and valued.

### College and Career Readiness

- A wide selection of Advanced Placement classes or Collegiate Connection offered at every high school
- Dual-credit courses offered in high schools and at local universities, giving students opportunities for both high school and college-level credits
- Ample opportunities to earn Honors and Technical Honors Diplomas, helping students get into the colleges of their choice
- Personalized college and career readiness and college tours
- Personalized college and career planning
- College and Career Readiness workshops, conferences and symposiums

### Magnet Schools and Programs for All Interests

- Montessori at Bunche Early Childhood Center and Towles Intermediate School grades one through five
- New Tech at Towles Intermediate School grades six through eight
- Fine Arts at Whitney Young Early Childhood Center, Weisser Park Elementary School and Memorial Park Middle School
- STEM at Irwin Elementary School
- Communications at Croninger Elementary School

### Specialized Programs of Study at Every High School

- International Baccalaureate (IB) at South Side High School
- Project Lead the Way Engineering at Northrop High School
- Project Lead the Way Biomedical Sciences at Snider High School
- Early College, Business, New Tech Academy and ROTC at Wayne High School
- Early College-Global Studies/ World Languages at North Side High School
- Career Education Programs at the FWCS Career Academy at Anthis
- Real-world career experiences at Amp Lab at Electric Works

### Outstanding Co-curricular Options at Every School

- Strong athletic programs
- Wide variety of clubs for every interest
- Strong music, art and dance programs
- Active Academic Bowl groups
- Clubs for a variety of interests

### Career Education Programs Resulting in Certifications

- Certified Nursing Assistant
- EMT (Emergency Medical Technician)
- Indiana Cosmetology License
- AWS (American Welding Society)
- Careers in Early Education (CDA)
- 7 NIMS Certifications (Precision Machine)
- CompTIA A+ (IT Academy)
- Telecommunicator I (Criminal Justice)
- Firefighter I & II (Fire Science)

### Educating the Whole Child through the 6 Cs

- Character
- Citizenship
- Collaboration
- Communication
- Creativity
- Critical Thinking

### Character Education and Individualized Instruction

- Character education is offered through Positive Behavior Interventions and Supports (PBIS), a research-based, nationally recognized system of proactive behavioral concerns management
- Individualized support for students of all ability levels and social/ emotional needs is offered through Student Support Teams, part of FWCS' Pyramid for Success™ student support system.



# TABLE OF CONTENTS

## SCHOOL CHOICE CATALOG

School Choice.....	5
At a Glance.....	6-7
Fort Wayne Virtual Academy.....	9
Early Childhood Centers.....	11
Elementary Schools.....	13-29
Intermediate Schools.....	31
Middle Schools.....	32-39
High Schools.....	40-45
District Programs.....	46
Lottery Application Process.....	47



# SCHOOL CHOICE

At Fort Wayne Community Schools, we are committed to providing your student with top quality educational opportunities and instruction that will ensure their success today and throughout life. All students have an assigned school based on family residence location, but you may apply for admission to any of our schools. Students are accepted based on space availability.

## MAGNET SCHOOLS

FWCS offers two magnet early childhood centers, three magnet elementary schools, one magnet intermediate school and one magnet middle school. Magnet schools have no attendance boundaries; students must submit an application for enrollment in these schools. Students are accepted based on space availability. If a school has more applications than space available, names will be selected in a public lottery (with computer-generated lists). Once chosen, students will receive enrollment information from their magnet school principal. Students not selected in the lottery are placed on a waiting list.

Students accepted into a magnet school can break their intra-district transfer and enroll in their attendance area school only. Once accepted, the student's name is removed from all waiting lists. Parents wanting to make a change after accepting must submit a new application.

## PROGRAMS OF STUDY

FWCS offers specialized Programs of Study at each high school, giving students an opportunity to try a career path and develop skills that can be used in the workplace. Students living in the Program of Study school attendance area may enroll, and a maximum of 25 students living outside the school's attendance area will be admitted to the Program of Study. If there are more than 25 applicants living outside the attendance area, names will be selected in a public lottery with computer-generated lists. Programs of Study require a four-year commitment or the student will return to his or her attendance area school.

## ELEMENTARY AND SECONDARY (MIDDLE AND HIGH SCHOOLS) LOTTERY ASSIGNMENT APPLICATIONS

Elementary, middle and high school students interested in special academic programs at schools other than their assigned school must complete the FWCS assignment application. Students accepted into a school other than their assigned school can

break their intra-district transfer and enroll in their attendance area school only.

## KINDERGARTEN REQUIREMENTS

To enroll in kindergarten for the 2022-23 school year, the child must be 5 years old by Aug. 1, 2022. For the 4-year-old pre-kindergarten program, the child must be 4 years old by Aug. 1, 2022. Parents can apply for early entrance into kindergarten only. Applications are available at the Family and Community Engagement Center, 230 E. Douglas Ave. The application deadline for early entrance waivers is January 5, 2022. Parents may contact the Family and Community Engagement Center for deadline information at 467-2120.

## TRANSPORTATION

Students transferring to a school other than their assigned school will not be eligible for transportation services. Transportation will be provided to magnet schools for students living outside the established No Transportation Zone (NTZ). For the Programs of Study at the high schools, only students who were accepted into the Programs of Study through the lottery process and live outside the NTZ for the school they will attend will be provided bus transportation. Only 25 students living outside the school's boundary per year will be admitted to each Program through the lottery. Students enrolled in Program of Study classes who live in the attendance area for the school in which the program is located will be provided bus transportation, if they live outside the NTZ. Students who were accepted through the lottery to attend the general program at a high school but later choose to take classes in a Program of Study will not be eligible for transportation. For more information, please contact FWCS Transportation at 467-1900.

## LIVING OUTSIDE FWCS

Students who live outside FWCS boundaries are welcome to attend FWCS schools, based on a school's space availability. A tuition payment may be required. Call 467-7250 for additional information.



# AT A GLANCE

FWCS SCHOOL	Title I	English Language Learner Program	Feeder Area	Magnet School	School with Dress Requirements	Before / After School Childcare Site	Pre-kindergarten	Magnet, School Focus or Program of Study
<b>EARLY CHILDHOOD CENTERS</b>								
Bunche		•	W	•		•	•	Montessori Magnet
Whitney Young		•	SS	•			• +	Arts Magnet
<b>ELEMENTARY SCHOOLS</b>								
Abbett	•	•	SS				• *	
Adams	•	•	S				• *	
Arlington		•	N			b/a		
Bloomington	•	•	NS				• *	
Brentwood	•	•	NS		•	b/a	• + *	
Croninger		•	S	•		b/a		Communications Magnet
Fairfield	•	•	SS				• * +	
Forest Park	•	•	NS		•	b/a	• + *	
Franke Park	•	•	NS			b/a	• *	
Glenwood Park		•	S			b/a		
Haley	•	•	S			b/a	• + **	
Harris		•	S			b/a		
Harrison Hill	•	•	SS		•	b/a	• +	
Holland		•	N			b/a	• +	
Indian Village	•	•	SS		•	b/a	• *	
Irwin		•	W	•		b/a		Math & Science Magnet
Levan Scott	•	•	W		•		• *	
Lincoln		•	N			b/a		
Lindley	•	•	W		•	b/a	• *	
Maplewood	•	•	W			b/a	• + *	
Northerest	•	•	NS		•	b/a	• + *	
Price	•	•	NS			b/a	• + **	
St. Joseph Central		•	N			b/a		
Shambaugh		•	N			b/a		
South Wayne	•	•	SS				• *	
Study	•	•	SS		•		• *	
Washington	•	•	W			b/a	• *	
Washington Center		•	N			b/a		
Waynedale	•	•	W		•		• *	
Weisser Park		•	SS	•		b/a		Arts Magnet
Fort Wayne Virtual Academy								K-12 Virtual Academy

N - Northrop Area  
NS - North Side Area

SS - South Side Area  
S - Snider Area

W - Wayne Area  
++ - Based on home address

b - before school  
a - after school

+ - Special Education pre-kindergarten  
\* - requires Title I home address  
\*\* - Title I pre-K offered at alternate site

# AT A GLANCE

FWCS SCHOOL	Title I	English Language Learner Program	Feeder Area	Magnet School	School with Dress Requirements	Before / After School Childcare Site	Magnet, School Focus or Program of Study
<b>INTERMEDIATE SCHOOL</b>							
Towles		•	W	•		b/a	Montessori, New Tech
<b>MIDDLE SCHOOLS</b>							
Blackhawk		•	S				
Jefferson		•	N				
Kekionga	•	•	SS				
Lakeside	•	•	NS		•		
Lane		•	S				
Memorial Park		•	SS	•			Arts Magnet
Miami	•	•	W				
Northwood		•	NS		•		
Portage	•	•	W				
Shawnee		•	N				
<b>HIGH SCHOOLS</b>							
FWCS Career Academy		•					Career & Technology Education
North Side	•	•	NS				Global Studies/World Languages
Northrop		•	N				Project Lead the Way/Engineering
Snider		•	S				Project Lead the Way/Biomedical Sciences
South Side	•	•	SS				Arts Magnet/International Baccalaureate Program
Wayne	•	•	W				New Tech Academy, ROTC and business
Amp Lab at Electric Works							Career & Entrepreneurial Education

N - Northrop Area  
NS - North Side Area

SS - South Side Area  
S - Snider Area

W - Wayne Area  
++ - Based on home address

b - before school  
a - after school

+ - Special Education pre-kindergarten  
\* - requires Title I home address





# CITIZENSHIP



## FORT WAYNE VIRTUAL ACADEMY

BYRON BROWN, PRINCIPAL

### **LOTTERY APPLICATION REQUIRED, LIMITED SPOTS AVAILABLE**

19100 Winchester RD. • Fort Wayne, IN 46819

260.467.7550

Kindergarten through 12th Grade

#### School Summary

The Fort Wayne Virtual Academy is a brand new opportunity within the Fort Wayne Community School District to help meet the needs of our students who would like to continue as fully virtual learners. It is a stand-alone K-12 school with its own staff, teachers, and administrators.

Classes are conducted through zoom, flexible learning periods, online assignments, and more! We also offer a wide range of classes through Edgenuity in order to meet the needs of all our students, regardless of their plan of study.

#### School Vision

“To prepare our students for a rapidly changing world by instilling critical thinking, creating a global perspective, and showing compassion for others. Resilience today, leads to success tomorrow.”

#### School Mission

We aim to develop strong connections with students that will encourage them to become well-rounded, thoughtful and competitive in a rapidly changing globalized world.

#### Applications

Students must submit a school choice lottery application for enrollment into Fort Wayne Virtual Academy. Online applications can be submitted at myFWCS Parent Portal (late applications must be submitted through the Family & Community Engagement Center, 260-467-2120).

- Students are accepted based on space availability.
- If a grade level has more applications than space available, names will be selected in a public lottery (with computer generated lists).
- If selected, students and/or parents will receive enrollment information from the school.
- Students not selected through the lottery are placed on a waiting list.

#### Eligibility

Any student in grades K-12 residing in Allen County and any county adjacent to Allen County in Indiana are eligible to enroll.

Eligible counties: Adams, Allen, DeKalb, Huntington, Noble, Wells and Whitley

- If a student moves out of the eligible counties they will be asked to withdraw and enroll at their new attendance area school
- Must be 5 years old on or before August 1, 2021 to be eligible for 2021/2022 Kindergarten enrollment
- There are no prerequisites to enroll, however, there will be expectations that must be met or students will be asked to return to attendance area school.

#### Programs

- need details

#### Co-curricular Activities

- Co-curricular activities are not offered for students of the Fort Wayne Virtual Academy.

#### Community Partnerships

- need details



# CREATIVITY





## BUNCHE EARLY CHILDHOOD CENTER

TAMARA MULLINS, PRINCIPAL

### MAGNET SCHOOL

1111 Greene St. · Fort Wayne, IN 46803  
260.467.4790

Pre-kindergarten through Kindergarten

#### School Summary

Bunche Early Childhood Center is an American Montessori Society accredited school, focusing on the natural stages of child development in an environment that cultivates the student's desire to learn. Bunche has a Montessori-certified instructional staff and administration, quality Montessori and supplemental materials and a supportive parent community.

#### Programs

- Magnet school using the Montessori method of instruction.
- Classrooms are multi-age and culturally diverse.
- Children learn by doing and from each other at their own pace. "Follow the Child," was the philosophy of Dr. Maria Montessori when she created the program more than 100 years ago.
- 1:1 iPad use for kindergarten students to connect Montessori materials to student learning, creating portfolios and connecting with home.
- Students learn to initiate and complete work cycles that require greater concentration and fine motor coordination to master facts and concepts through practice with an array of hands-on manipulative materials.
- English Language Learner (ELL) program is offered to students for whom English is a new language.

#### Co-curricular Activities

- PTA-Sponsored Family Nights
- Garden Areas for Classrooms
- Peace activities that promote kindness and generosity in the community

#### Community Partnerships

- Aquatic connection with Broadway Aquatics
- Junior Achievement JA in a Day sponsored by Lincoln Financial
- Dance Collective sponsored events

#### Childcare

Before-school and after-school childcare is offered by the YMCA; before care 6:30 a.m.-7:50 a.m., pre-kindergarten afternoon care 11:45 a.m.-2:30 p.m. and after care 2:20-6 p.m.

## WHITNEY YOUNG EARLY CHILDHOOD CENTER

CLAIRE PAUL, PRINCIPAL

### MAGNET SCHOOL

1026 E. Pontiac St. · Fort Wayne, IN 46803  
260.467.8950

Pre-kindergarten through Kindergarten

#### School Summary

Whitney Young Early Childhood Center, following the Reggio Emilia philosophy, seeks to ensure student achievement by providing a nurturing environment in which all children are valued, respected and encouraged to construct knowledge through guided exploration and social interaction as they discover the joy of learning. The school is fully accredited by the National Association for the Education of Young Children. Parents receive a daily e-mail with details and pictures about their child's day. In collaboration with Discovery Education, Whitney Young is building a STEAM (Science, Technology, Engineering, Art and Math) culture that inspires and cultivates the next generation of problem solvers, inventors and leaders.

#### Programs

- Magnet school featuring fine arts.
- Children collaborate, investigate and explore in a beautiful, calm, peaceful environment.
- A wide variety of fine arts experiences form a solid foundation for continued participation in the arts magnet program ranging from visual arts to music and theater.
- An inclusive special education pre-kindergarten program is available.
- English Language Learner (ELL) program is offered to students for whom English is a new language.

#### Co-curricular Activities

- Garden Club for pre-kindergarten and kindergarten students.

#### Community Partnerships

- Fort Wayne Ballet exposes our students to dance with classes at the school.
- Fort Wayne Museum of Art provides experiences for our school.
- We have various artists from the community in the school throughout the year.

#### Childcare

Before-school and after-school childcare is offered by the YMCA.

# COLLABORATION



Abbott, Adams.....	13
Arlington, Bloomingdale.....	14
Brentwood, Croninger.....	15
Fairfield.....	16
Forrest Park, Franke Park.....	17
Glenwood Park, Haley.....	18
Harris, Harrison Hill.....	19
Holland, Indian Village.....	20
Irwin.....	21
Levan Scott, Lincoln.....	22
Lindley, Maplewood.....	23
Northcrest, Price.....	24
St. Joseph Central, Shambaugh.....	25
South Wayne, Study.....	26
Washington, Washington Center.....	27
Waynedale, Weisser Park.....	28

**ABBETT ELEMENTARY SCHOOL****FRANK KLINE, PRINCIPAL**

4323 Smith St. • Fort Wayne, IN 46806

260.467.5800

Pre-kindergarten through fifth grade

**School Summary**

Abbett Elementary School is a diverse and empowering center for student learning. Curiosity, risk-taking, kindness and collaborative learning are encouraged in each child and adult every day. Abbett is a student and family community center where we believe in the best from every adult and every child.

**Programs**

- Computers are available 1:1 for all third through fifth-grade students.
- Abbett students enjoy the use of Apple iPads, allowing 21st century skills to be integrated into the curriculum.
- Family events are held throughout the school year to promote parent, child and school relationships while enhancing knowledge of grade level students.
- The Blessings in a Backpack weekend food program is offered to eliminate hunger as an academic barrier.
- English Language Learner (ELL) program is offered to students for whom English is a new language.
- Federally-funded Title I programs support additional resources for improving student performance, including Title I pre-kindergarten.

**Co-curricular Activities**

- FWCS Study Connection
- Basketball Team
- Spell Bowl
- Sumdog Competition
- Leaders of the Pack
- Math Bowl

**Community Partnerships**

- Pine Hills Church provides volunteers for events, adopts a classroom and hosts a school carnival.
- Love in Action sends home two weeks of food with each child during winter break.
- Boys and Girls Club provides a male leadership program.
- I & M is Study Connection partner.
- Big Brothers Big Sisters Lunch Buddies and Real Men Read
- Allen County Education Partnership Project READS
- Junior Achievement

**Childcare**

Before-school and after-school childcare is offered at Weisser Park Elementary School by the YMCA.

**ADAMS ELEMENTARY SCHOOL****ALLISON HOLLAND, PRINCIPAL**

3000 New Haven Ave. • Fort Wayne, IN 46803

260.467.5850

Pre-kindergarten through fifth grade

**School Summary**

Adams Elementary School is a dynamic learning center in which caring professionals provide research-based instruction to ensure each child achieves academic success. Adams staff members provide a student-centered environment that empowers responsible lifelong learners to actively participate in a diverse society.

**Programs**

- Adams is 1:1 with K-2 classes having iPads and 3-5 having ThinkPads. Each classroom integrates technology to enhance the skills and concepts being taught through the FWCS curriculum.
- Adams is a member of the Indiana Association of Student Councils and has been an Honor Council for three consecutive years.
- The Blessings in a Backpack weekend food program is offered to eliminate hunger as an academic barrier.
- English Language Learner (ELL) program is offered to students for whom English is a new language.
- Federally-funded Title I programs support additional resources for improving student performance, including Title I pre-kindergarten.
- Active PTA supports parents and students.

**Co-curricular Activities**

- Spell Bowl
- Math Bowl
- Student Council
- Safety Patrol Team
- FWCS Study Connection
- Student Announcement and Communications Team
- Robotics Team
- Sparks of Promise
- Basketball Team
- Cheerleading

**Community Partnerships**

- Real Men Read
- Junior Achievement
- Rising Stars Program
- Notre Dame Club
- The Chapel
- South Side High School Key Club
- FWCS Career Academy
- Snider High School

**Childcare**

Before-school and after-school childcare is offered at Forest Park by the YMCA.



**ARLINGTON ELEMENTARY SCHOOL****NICHOLAS KIRBY, PRINCIPAL**

8118 St. Joe Center Rd. · Fort Wayne, IN 46835

260.467.6000

Kindergarten through fifth grade

**School Summary**

Arlington Elementary School fosters an atmosphere of excellence and high expectations for all students. Its staff provides a safe, nurturing environment while assisting each student in reaching high levels of academic achievement.

**Programs**

- Incentive programs promote excellent behavior and strong academic performance.
- Active PTA provides many opportunities for parents to be involved.
- Family nights are held throughout the year to promote academics and family involvement.
- English Language Learner (ELL) program is offered to students for whom English is a new language.

**Co-curricular Activities**

- Fitness Mileage Club
- Cross Country
- FWCS Study Connection
- Spell Bowl
- Math Bowl

**Community Partnerships**

- Parkview Health and Brookside Church are FWCS Study Connection partners.
- Other partners include Pizza Hut-Stellhorn, Messiah Lutheran Church, Ziano's, Dairy Queen-Chapel Ridge and Culvers-Stellhorn.

**Childcare**

Before-school and after-school childcare is offered on-site by the YMCA.

**BLOOMINGDALE ELEMENTARY SCHOOL****JENNIFER EVANS, PRINCIPAL**

1300 Orchard St. · Fort Wayne, IN 46808

260.467.6700

Pre-kindergarten through fifth grade

**School Summary**

Bloomington Elementary School is a community of learners with distinction who embrace a culture of universal achievement and high expectations. Bloomington is a child-centered school focused on educating all students to high standards.

**Programs**

- Classroom computers integrate technology in all academic areas.
- Recess Mileage Club, the Basketball Team and Cheerleading Squad promote fitness.
- Family events throughout the school year promote parent participation.
- An active PTA promotes parental involvement.
- Recognition programs include Chiefs Achieve, monthly Kiwanis awards and a ChiefToken system.
- Character Education paired with a neuroscience program encourages students to demonstrate positive attitudes and develop habits of community service.
- English Language Learner (ELL) program is offered to students for whom English is a new language.
- Federally-funded Title I programs support additional resources for improving student performance, including Title I pre-kindergarten.

**Co-curricular Activities**

- Book Fair
- Math Bowl
- Parent Learning Enrichment Workshops
- FWCS Study Connection
- Musical Performances

**Community Partnerships**

Community Partnerships

- Study Connection
- Big Brothers/Big Sisters
- Rising Stars
- Real Men Read
- Salvation Army

**Childcare**

Before-school and after-school childcare is offered at Frank Park by the YMCA.

## BRENTWOOD ELEMENTARY SCHOOL

MATT MEIGHEN, PRINCIPAL

3710 Stafford Dr. • Fort Wayne, IN 46805  
260.467.6775

Kindergarten through fifth grade and  
Buschor HEAR Pre-kindergarten

### School Summary

Brentwood Elementary School seeks to create an environment of academic enrichment and character building for lifelong learning. It focuses on the whole child through academic pursuits and extracurricular activities to ensure that students are equipped to meet the needs of our global society.

### Programs

- Character Education program encourages students to demonstrate positive attitudes and develop habits of community service.
- Uniforms are required.
- English Language Learner (ELL) program is offered to students for whom English is a new language.
- Federally-funded Title I programs support additional resources for improving student performance, including Title I pre-kindergarten.

### Co-curricular Activities

- Student Senate
- Vocal Choir
- Basketball
- FWCS Study Connection
- Mileage Club

### Community Partnerships

- Faith Baptist Church is Study Connection partner.
- Big Brothers Big Sisters Lunch Buddies

### Childcare

Before-school and after-school childcare is offered on-site by the YMCA.



## CRONINGER ELEMENTARY SCHOOL

RACHEL MERZ PRINCIPAL

### **MAGNET SCHOOL**

6700 Trier Rd. • Fort Wayne, IN 46815  
260.467.6050

Kindergarten through fifth grade

### School Summary

Croninger Elementary School is a magnet school providing an environment for mastery of academic skills with special emphasis on communications. The school is child-centered and motivated by what is best for students. Through positive partnerships between school, home and community, children are encouraged to reach their potential academically, socially and emotionally.

### Programs

- Magnet school featuring communications, which develops skills that are required for success in learning and leading.
- Students can work on television production, oral speaking and writing skills, producing a biweekly WCKN newscast and "Croninger Clips" video that is aired over the school's closed circuit television system and LTV 54/24.
- Introduction to Spanish is taught to all students through the study of the cultures, history, landforms and communities where Spanish is the native language.
- Each student is taken through the entire publishing process creating a book or blog of a different genre each year.
- English Language Learner (ELL) program is offered to students for whom English is a new language.
- Parents and community members are informed through the monthly newsletter, The Croninger Chronicle, individual teacher newsletters and e-mails.

### Co-curricular Activities

- Croninger Kids Care Council
- Safety Patrol
- Math Bowl
- Young Author's
- Vocal Choir
- Girl Scouts/Boy Scouts
- FWCS Study Connection
- Spanish Club
- Writing Club
- Science Fair
- Cross Country and Mileage Club

### Community Partnerships

- Messiah Lutheran Church and Taylor Chapel are Study Connection partners.
- Faith Baptist Church

### Childcare

Before-school and after-school childcare is offered on-site by the YMCA. After-school care is offered by Faith Baptist.

**FAIRFIELD ELEMENTARY SCHOOL****DAVID TIJERINA, PRINCIPAL**

2825 Fairfield Ave. • Fort Wayne, IN 46807

260.467.5900

Pre-kindergarten through fifth grade

**School Summary**

Fairfield Elementary School is an historic neighborhood school located on the southwest side of downtown Fort Wayne. By holding all students to high expectations and maintaining close relationships with our families and community, Fairfield Elementary is able to educate all students to high standards. Our rigorous curriculum focuses on reading and math skills, as well as integrating 21st century technology skills into the classroom. In addition, students are taught to be Respectful, Responsible and Safe leaders in and around the school in order to become productive, proactive adults.

**Programs**

- Fairfield's PBIS (Positive Behavior Intervention and Supports) Program focuses on teaching students procedures and expectations to be respectful, responsible and safe in all areas of the school. Lessons are taught in the classroom, students create videos modeling appropriate behavior for others, and students are rewarded for following procedures.
- Parents are strongly valued as critical to school success and are provided opportunities throughout the year to volunteer at the school, in the classroom, on field trips and for academic activities.
- Every room has computers, listening stations, document cameras and iPads for students.
- Family nights are held during the year to promote academics, family involvement and school-community pride.
- The Falcon Feather program rewards students with "currency" that they can earn for consistently going above and beyond with behavior and academics. Students use their leathers to purchase fun items in the school store.
- Each classroom nominates a "Leader of the Week" every week. This student best exemplifies our school-wide expectations of being Respectful, Responsible and Safe. Students get a picture taken with the Principal and are given a pencil and a special prize. All students who are nominated for Leader of the Week get to participate in a Leader Luncheon at the end of every month with the Principal.
- The Blessings in a Backpack weekend food program is offered to eliminate hunger as an academic barrier.
- English Language Learner (ELL) program is offered to students for whom English is a new language.
- Parent ELL Classes are offered every year for parents and caregivers to improve English speaking and listening skills. Fairfield teachers instruct the classes.
- Federally-funded Title I programs support additional resources for improving student performance, including Title I pre-kindergarten.

**Co-curricular Activities**

- Math Bowl
- Spelling Bee
- Basketball
- FWCS Study Connection
- Cross Country
- Falcon Chorus
- Fiddle Club
- Project READS
- Cheerleading

**Community Partnerships**

- Big Brothers Big Sisters School Buddies
- Rising Stars Program with St. Joseph United Methodist Church
- Lincoln Financial Group and FWCS Grile Administration Center are Study Connection partners.
- Allen County Education Partnership offers Project READS.
- Center for Nonviolence provides leadership classes for students.

**Childcare**

Before-school and after-school childcare is offered on site by Y-Care. In addition, the Boys and Girls Club services Fairfield Elementary students after school.





## FOREST PARK ELEMENTARY SCHOOL

SARA WERTMAN, PRINCIPAL

2004 Alabama Ave. • Fort Wayne, IN 46805

260.467.6850

Pre-kindergarten through fifth grade

### School Summary

Forest Park Elementary School, a historic neighborhood school, encourages student and adult participation in a variety of experiences to improve student achievement. These include community partnerships, service projects, school productions and after-school activities. The school's academic focus areas are reading comprehension and math computation. Our children are culturally diverse, and we celebrate our differences and similarities.

### Programs

- Character Education Programs and small group instruction encourage students to embrace being Respectful, Responsible and Safe.
- Active PTA supports students and parents with a Fall Carnival and Cultural Arts Week.
- Students are recognized for attendance, citizenship and academic achievements.
- Special education pre-kindergarten is offered.
- English Language Learner (ELL) program is offered to students for whom English is a new language.
- Federally-funded Title I programs support additional resources for improving student performance, including Title I pre-kindergarten and Literacy and Math Nights for families.
- Club Orchestra, otherwise known as Club O, offers students in grades 3-5 the opportunity to learn to play the violin after school 3 days a week. Preschool participants in Kid O are provided a unique philharmonic experience.

### Co-curricular Activities

- Spell Bowl and Math Bowl
- Musical Performances
- Chess Club
- Girls Who Code Club
- FW Ballet Classes
- Journalism Club
- Science Fair
- Volleyball Club
- FWCS Study Connection
- Running Club
- Basketball Club

### Community Partnerships

- Nichols Company
- Raytheon
- Huntington University
- Junior Achievement
- TinCaps Reading Program
- Big Brothers Big Sisters Lunch Buddies
- Associated Churches, Lifehouse Church
- Early Childhood Alliance
- University of St. Francis
- Real Men Read

### Childcare

Before-school and after-school childcare is offered on-site by the YMCA.

## FRANKE PARK ELEMENTARY SCHOOL

JASMINE YOUNGBLUTT, PRINCIPAL

828 Mildred Ave. • Fort Wayne, IN 46808

260.467.6925

Pre-kindergarten through fifth grade

### School Summary

Franke Park Elementary School seeks to ensure that all students achieve personal excellence that will further lifelong learning through mastery of the core curriculum. The school provides a positive, diverse setting wherein students learn self-respect and appreciation for the uniqueness of others.

### Programs

- The school focuses on science, technology and mathematics.
- English Language Learner (ELL) program is offered to students for whom English is a new language.
- Federally-funded Title I programs support additional resources for improving student performance, including Title I pre-kindergarten.

### Co-curricular Activities

- Spell Bowl
- Girls on the Run
- STARBASE
- Music programs at North Side High School
- Math Bowl
- Science Fair
- FWCS Study Connection

### Community Partnerships

- Junior Achievement
- Real Men Read
- TinCaps Reading Program
- Student Council
- Fort Wayne Children's Zoo offers classroom lessons and free tickets
- Komet Hockey student recognition
- St. Matthew Lutheran Church Rising Star
- Parkview Student Fitness Challenge
- Kiwanis Award
- K-Kids
- Costco

### Childcare

Before-school and after-school childcare is offered on-site by the YMCA.



## GLENWOOD PARK ELEMENTARY SCHOOL

**DR. CRYSTAL BUSH, PRINCIPAL**

4501 Vance Ave. • Fort Wayne, IN 46815

260.467.6200

Kindergarten through fifth grade

### School Summary

Glenwood Park Elementary School strives to provide personalized, student-centered learning focused on mastery of the FWCS core curriculum while emphasizing creative and critical areas for a diverse student and parent community. The school emphasis is to enhance student achievement in the focus areas of its School Improvement Plan: English/Language Arts and math ILEARN achievement, reading at grade level and Positive Behavior support.

### Programs

- Reader's Workshop and reading conferences are stressed as a part of daily reading instruction.
- Literacy and math workstations are experienced daily to meet individual student needs.
- Daily Five and Cafe are organizational and instructional techniques used to enhance fluency, comprehension and other reading skills.
- Writer's Workshop is emphasized to improve writing skills.
- All students participate in a bi-monthly celebration to recognize Distinguished Panther Cubs for excellence in academics, citizenship, growth and overall outstanding achievement.
- English Language Learner (ELL) program is offered to students for whom English is a new language.

### Co-curricular Activities

- |                   |                         |
|-------------------|-------------------------|
| • Girl Scouts     | • Basketball            |
| • Boy Scouts      | • Spell Bowl            |
| • Student Council | • Percussion Ensemble   |
| • Cross Country   | • Math Bowl             |
| • STARBASE        | • FWCS Study Connection |

### Community Partnerships

- Good Shepherd United Methodist Church is Study Connection partner and Rising Stars Community Connection.
- McDonald's – Stellhorn Road donations and fundraisers
- Pizza Hut – Stellhorn Road donations and fundraisers
- St. Joe Vision Center provides free screening
- Snider High School Tutoring
- Culvers
- Real Men Read
- Arby's

### Childcare

Before-school and after-school childcare is offered on-site by the YMCA.

## HALEY ELEMENTARY SCHOOL

**C. BRIAN HOWARD, PRINCIPAL**

2201 Maplecrest Rd. • Fort Wayne, IN 46815

260.467.4510

Pre-kindergarten through fifth grade

### School Summary

Haley Elementary School works closely with parents and community members to ensure all students are educated to high standards. The school's focus areas are setting high academic standards for all students, while still providing support for all students. Haley believes that the way to a great education is through strong caring relationships.

### Programs

- Haley has one of the largest elementary media center collections in FWCS.
- Students are recognized for making the Honor Roll, attendance, citizenship, leadership, reading accomplishments and birthdays.
- A strong and active PTA supports the school's efforts.
- Special education pre-kindergarten is offered.
- English Language Learner (ELL) program is offered to students for whom English is a new language.
- Federally-funded Title I programs support additional resources for improving student performance, including Title I pre-kindergarten.

### Co-curricular Activities

- |                              |                |
|------------------------------|----------------|
| • Basketball Team            | • Cheerleading |
| • Spell Bowl                 | • Math Bowl    |
| • Girl Scouts and Boy Scouts |                |
| • FWCS Study Connection      |                |

### Community Partnerships

- Big Brothers Big Sisters Lunch Buddies
- Blackhawk Ministries
- Junior Achievement

### Childcare

Before-school and after-school childcare is offered on-site by the YMCA.



**HARRIS ELEMENTARY SCHOOL****COURTNEY GREMAUX, PRINCIPAL**4501 Thorngate Dr. • Fort Wayne, IN 46835  
260.467.6300

Kindergarten through fifth grade

**School Summary**

Harris Elementary School focuses on high achievement for all students in a caring, welcoming environment. Rigorous instruction in academic areas as well as integrative arts classes prepare students to become positive contributing members of society through a broad and balanced approach to education.

**Programs**

- PTA Reflections
- Science Fair
- Young Authors
- Spelling Bee
- Strong, active PTA
- English Language Learner (ELL) program is offered to students for whom English is a new language
- Special Education Program for Hearing Impaired students grades K-5
- Special Education Program for Applied Skills students grades K-5

**Co-curricular Activities**

- Cheer and Stomp Dance Classes by Center Stage Dance
- Math Bowl Team
- Spell Bowl Team
- Basketball Intramural Team
- Safety Patrol
- FWCS Study Connection
- Cross County

**Community Partnerships**

- Do it Best Corp. is Study Connection partner
- Rising Stars Program with Central Ministries

**Childcare**

Before-school and after-school childcare is offered on-site by the YMCA.

**HARRISON HILL  
ELEMENTARY SCHOOL****SHANNON RODGERS, PRINCIPAL**355 Cornell Circle • Fort Wayne, IN 46807  
260.467.7000

Pre-kindergarten through fifth grade

**School Summary**

Harrison Hill Elementary School is dedicated to student achievement in all areas of study. We are a learning community emphasizing academic excellence and personal growth. All students at Harrison Hill are valued members of the learning community and student celebrations are held monthly to promote academic achievement and positive behavior.

**Programs**

- The academic program focuses on a differentiated literacy curriculum within all subjects including: reading, writing,

math, science, social studies and technology instruction.

- Computers are available 1:1 for all third through fifth grade students. Technology is used in all areas of study, allowing 21st century skills to be applied in the general education setting.
- iPads are used 1:1 in kindergarten through second grade.
- A technology lab with computers, iPads, coding and robotics is utilized to offer enhanced learning opportunities to all students.
- A code of conduct and standardized dress code are endorsed by parents, staff and students to foster a safe learning environment.
- Students may participate in numerous special projects during the school year including: PTA Reflections, Science Fair, Young Authors, Gobble Off, Read Across America, Yearbook, Cultural Week, Holiday Charity Drive and many other activities designed to enhance student awareness and promote good citizenship.
- Special Education pre-kindergarten is offered.
- English Language Learner (ELL) program is the largest among FWCS elementary schools and is offered to students for whom English is a new language.
- An active PTA promotes teacher and parental involvement, as well as the involvement of business and community leaders with the mission of educational success.
- Federally-funded Title I programs support additional resources for improving student performance, including a NAEYC accredited Title I pre-kindergarten.

**Co-curricular Activities**

- STARS (Boys group devoted to character building)
- GEMS (Girls group devoted to character building)
- Cheer Team
- Spell Bowl Team
- FWCS Study Connection
- Cross Country
- Choir
- Running Club
- Science Fair
- Math Bowl Team
- Basketball Team
- Robotics Club

**Community Partnerships**

- Lincoln Financial Group (Study Connection partner)
- Big Brothers Big Sisters Lunch Buddies
- ATT Mobility Services, LLC/Pioneer Board
- Boys and Girls Club
- City Church
- Associated Churches
- Project READS
- Euell Wilson Center
- Indiana Michigan Power
- First Missionary Church

**Childcare**

Before-school and after-school childcare is offered on-site by the YMCA.



**HOLLAND ELEMENTARY SCHOOL****STACEY SCHORTGEN, PRINCIPAL**7000 Red Haw Dr. • Fort Wayne, IN 46825  
260.467.7075

Pre-kindergarten through fifth grade

**School Summary**

Mabel K. Holland Elementary School focuses on high academic achievement for all students. We teach students to become critical thinkers and collaborative problem solvers through rigorous instruction preparing them for higher learning.

**Programs**

- All students have an iPad or laptop for instructional use.
- Students utilize their laptop or iPad daily engaging in 21st century learning in all classrooms.
- English Language Learner program is offered to students for whom English is a new language.
- Monthly student assembly celebrations recognize students for their accomplishments once a month in front of their peers.
- Positive behavior recognition during announcements daily.
- All students write a book and participate in our Young Authors day, complete with a visit from a published author.
- On My Way Pre-K location.

**Co-curricular Activities**

- FWCS Study Connection
- Spell Bowl
- Intramural program in the AM
- Lego Robotics Team
- Basketball Team
- Math Bowl Team
- Cheer Block

**Community Partnerships**

- Gethsemane Lutheran Church
- Towne House
- Anthony Wayne Rotary Club
- Big Brothers Big Sisters Lunch Buddies
- Real Men Read

**Childcare**

Before-school and after-school childcare is offered on-site by the YMCA.

**INDIAN VILLAGE ELEMENTARY SCHOOL****KARA MILLER, PRINCIPAL**3835 Wenonah Ln. • Fort Wayne, IN 46809  
260.467.5200

Pre-kindergarten through fifth grade

**School Summary**

Indian Village Elementary School is a School of Distinction with a Staff of Distinction creating Students of Distinction. Its theme is "Every Student, Every Day." We are dedicated, determined and dependable.

**Programs**

- Indian Village is now a "one-to-one" school. This means each

of our K-2 students have access to an iPad, and each of our grades 3-5 students have a laptop to use each and every day.

- Uniforms are required to establish a strong focus on academics
- The school's PTA is very active and supports a variety of school initiatives.
- Fifth-graders participate in the Department of Defense STARBASE program, which is a world leader in introducing the latest Science, Technology, Engineering, Art and Math (STEAM) curriculum to elementary students. The inquiry-based curriculum engages students in exciting "hands-on, minds-on" experiments and technology activities.
- Quarterly celebrations occur to recognize student achievement, and Students of Distinction.
- English Language Learners (ELL) program is offered to students for whom English is a new language.
- Federally-funded Title I programs support additional resources for improving student performance, including Title I pre-kindergarten. Title I funds also support math and reading intervention for students. Title I parent nights enhance math and language arts learning for students and parents.
- Character Education Programs focus on developing students socially and teach them how to become Students of Distinction by being respectful, responsible and safe.
- A Therapeutic Counselor is available for all students to support in social-emotional growth and learning.

**Co-curricular Activities**

- Project READS
- Student Leadership
- Basketball Team
- Cross Country Team
- Spell Bowl
- Math Bowl
- Science Fair
- Robotics Club

**Community Partnerships**

- Associated Churches Rising Stars Program with First Wayne Street Methodist Church provides 1:1 tutoring, school supplies and extra clothing for students in need
- Real Men Read Program
- Allen County Education Partnership for Project READS
- Practicum experiences are provided for students from Huntington University, University of Saint Francis and Indiana Tech
- Junior Achievement provides JA in a Day for our students

**Childcare**

Before-school and after-school childcare is offered on-site by the YMCA.

**IRWIN ELEMENTARY SCHOOL****MARY KINNIRY, PRINCIPAL****MAGNET SCHOOL**3501 S. Anthony Blvd. · Fort Wayne, IN 46806  
260.467.5310

Kindergarten through fifth grade

**School Summary**

Irwin Elementary School is a Science, Technology, Engineering and Math (STEM) Magnet school. To enhance its strong math and science emphasis, Irwin is working in partnership with Discovery Education to build a STEM culture that inspires and cultivates the next generation of problem-solvers, innovators and leaders. By providing meaningful, interactive opportunities for students to become engaged in these subject areas, Irwin will prepare students to be qualified and competitive candidates in the future economy and guide them towards the emerging careers of tomorrow.

**Programs**

- Magnet school focused on science, technology, engineering and math (STEM).
- Students experience additional hands-on inquiry-based science and math going beyond the District's required curriculum.
- STEM Lab allows students to find the scientists inside themselves through simulation and exploration.
- Art, music and physical education classes integrate math and science concepts with a high value placed on helping students develop the ability to think and analyze critically and quantitatively.
- Character development is an important focus for helping students develop socially as well as academically.
- Students and staff gather weekly to celebrate successes and learn from each other during "Blastoff" where individual accountability and collective responsibility are fostered for the school community.
- All students are part of the Irwin Rocket Team and earn merits for behavior and academics.
- Strong PTA and communication system between school and home support student learning.
- A small school family atmosphere and a diverse population enrich the learning opportunities for all.
- English Language Learner (ELL) program is offered to students for whom English is a new language.

**Co-curricular Activities**

- Math Bowl
- Student Council
- Lego League
- Soccer
- FWCS Study Connection

**Community Partnerships**

- City of Fort Wayne is Study Connection partner
- Collaboratively sponsoring a community garden with Bethlehem Lutheran Church

- Discovery Learning as a STEM partnership
- Manchester University
- Purdue University Fort Wayne

**Childcare**

Before-school and after-school childcare is offered on-site by the YMCA.



**LEVAN SCOTT ACADEMY****CAROLYN KENNEDY, PRINCIPAL**

950 E Fairfax Ave. • Fort Wayne, IN 46806

260.467.8050

Pre-kindergarten through fifth grade

**School Summary**

At Levan Scott Academy, all children will achieve grade-level mastery of educational standards through the use of varied teaching and learning styles in an enriched environment that is empowering and nurturing. The school focuses on proficiency in reading and math, as well as technology.

**Programs**

- Scott's PBIS (Positive Behavior Intervention and Supports) Program focuses on the explicit instruction of procedures and expectations in order to foster respect, responsibility and safety in all areas of the school. Lessons are taught in the classroom, students create videos modeling appropriate behavior for others and students are consistently rewarded for following schoolwide procedures.
- Students are recognized for their positive behavioral achievements often through the school year, including Cadet Cash, Treasure Tower Tokens and quarterly field trips.
- Family nights offer parents the opportunity to enhance their knowledge of school curriculum and instructional strategies.
- The PTA and Quality Improvement Team offer opportunities for parents to become active partners in delivering education.
- English Language Learner (ELL) program is offered to students for whom English is a new language.
- Federally-funded Title I programs support additional resources for improving student performance, including Title I pre-kindergarten.

**Co-curricular Activities**

- Basketball team
- Hands On Homework
- Spell Bowl/Math Bowl Competitors

**Community Partnerships**

- Big Brothers Big Sisters Lunch Buddies
- Bridge of Grace Compassionate Ministries Center
- Faith Lutheran Church
- Many Nations Church
- Hands On Homework tutoring program
- St. Joseph United Methodist Church
- Time Corners Kiwanis
- Junior Achievement
- Real Men Read
- TinCaps Reading Program
- Foster Grandparent Program
- Center for Nonviolence provides leadership classes for students.

**Childcare**

Before-school and after-school childcare is offered at Weisser Park by the YMCA.

**LINCOLN ELEMENTARY SCHOOL****JOHN R. ANKENBRUCK, PRINCIPAL**

1001 E. Cook Rd. • Fort Wayne, IN 46825

260.467.5400

Kindergarten through fifth grade

**School Summary**

Guided by love, respect and a passion for learning, the Lincoln Elementary team educates all students to high standards enabling them to become productive, responsible citizens.

**Programs**

- Diverse student population enriches learning opportunities for all.
- Strong parent and community involvement and partnerships.
- Active PTA allows ample opportunity for parental participation.
- Positive Behavior Intervention Support (PBIS) program focuses on explicit instruction of behaviors that help our student become respectful, responsible, safe and engaged in their learning.
- Family nights offer parents the opportunity to enhance their knowledge of school curriculum, instructional strategies and ways to support their children's learning.
- One-to-one iPad access for all students in Kindergarten through second grade and laptop access for all students in third through fifth grade.
- Regular implementation of technology in the classroom to engage learners and enhance instruction.
- Whole-group, small-group and one-on-one instruction in literacy and mathematics, ensuring that students reach and exceed mastery of grade-level standards.
- Intervention program to remediate students, closing any gaps in reading and math skills.
- Extended learning opportunities for high-ability learners.
- English Language Learner (ELL) program is offered to students for whom English is a new language.

**Co-curricular Activities**

- Lincoln Sensations Show Choir
- Spell Bowl Team
- FWCS Study Connection
- Math Bowl Team
- Cheerleading Team
- Basketball Team
- Cross Country Contests
- Girls on the Run Club
- Sumdog Math Contest



**Community Partnerships**

- Big Brothers Big Sisters Lunch Buddies
- Rising Stars Program partnered with Covenant United Methodist Church
- PHP Komet Hockey Night
- Junior Achievement (including JA in a Day and Biztown)
- Foster Grandparent Program

**Childcare**

Before-school and after-school childcare is offered on-site by the YMCA.

**LINDLEY ELEMENTARY SCHOOL**

JENNIFER NICKELL, PRINCIPAL

2201 Ardmore Ave. · Fort Wayne, IN 46802  
260.467.5350

Pre-kindergarten through fifth grade

**School Summary**

Lindley Elementary School provides students with a solid academic foundation by giving each child a personalized program. It offers a Spanish Language and Culture Program. Both English-speaking students and native speakers of the Spanish language benefit from this program.

**Programs**

- The Spanish Language and Culture Program's goal is for students to foster a love of the Spanish Language and Culture. Students will develop increased awareness while reaching a high level of academic achievement. Students receive thirty minutes of Spanish instruction daily in addition to a Special Area class once a week.
- English Language Learner (ELL) program is offered to students for whom English is a new language.
- Federally-funded Title I programs support additional resources for improving student performance, including Title I pre-kindergarten.

**Co-curricular Activities**

- |              |              |
|--------------|--------------|
| • Math Bowl  | • Robotics   |
| • Basketball | • Spell Bowl |

**Community Partnerships**

- Manchester University
- Purdue University FW
- Big Brothers Big Sisters Lunch Buddies
- Real Men Read

**Childcare**

Before-school and after-school childcare is offered on-site by the YMCA.

**MAPLEWOOD ELEMENTARY SCHOOL**

ALEXANDRA TREVINO, PRINCIPAL

2200 Maplewood Rd. · Fort Wayne, IN 46819  
260.467.7150

Pre-kindergarten through fifth grade

**School Summary**

Maplewood Elementary School focuses on reading, language arts and math. All grade levels concentrate on research-based best practices with an emphasis on the Elementary Literacy Framework.

**Programs**

- Quarterly parent nights focus on math, reading, writing and science.
- Maplewood's fifth grade students attend STARBASE, where they participate in STEM projects.
- English Language Learner (ELL) program is offered to students for whom English is a new language.
- Federally-funded Title I programs support additional resources for improving student performance, including Title I pre-kindergarten.

**Co-curricular Activities**

- |                         |                |
|-------------------------|----------------|
| • Basketball            | • Cheerleading |
| • FWCS Study Connection | • Show Choir   |
| • Cross Country Team    | • Spell Bowl   |
| • Math Bowl             | • Robotics     |

**Community Partnerships**

- Big Brothers Big Sisters Lunch Buddies
- Fort Wayne Police Department Community Connection
- Waynedale Baptist Church offers support and resources
- BAE is Study Connection partner
- Real Men Read
- FAME Festival

**Childcare**

Before-school and after-school childcare is offered on-site by the YMCA.



## NORTHCREST ELEMENTARY SCHOOL

LINDSAY AMSTUTZ MARTIN, PRINCIPAL

5301 Archwood Ln. • Fort Wayne, IN 46825

260.467.5450

Pre-kindergarten through fifth grade

### School Summary

Northcrest Elementary School, a family of multicultural learners, seeks to ensure a safe and caring environment where everyone is valued and all students meet or exceed academic grade-level standards.

### Programs

- A strong emphasis on being respectful toward all individuals and accepting of their ethnic and cultural backgrounds is an important part of the school culture.
- Uniforms are required to reinforce learning as a priority and promote acceptance of all students.
- Students are rewarded for following the behavior code with monthly celebrations.
- Family nights are held during the year to promote academics, family involvement and school-community pride.
- Special education pre-kindergarten is offered.
- English Language Learner (ELL) program is offered to students for whom English is a new language.
- Federally-funded Title I programs support additional resources for improving student performance, including Title I pre-kindergarten.

### Co-curricular Activities

- Project READS
- FWCS Study Connection

### Community Partnerships

- Fort Wayne Newspapers and Ivy Tech are Study Connection partners
- Big Brothers Big Sisters Lunch Buddies
- Colleges and universities create opportunities to bring the reality of college to life for students.
- Allen County Education Partnership for Project READS

### Childcare

Before-school and after-school childcare is offered on-site by the YMCA.



## PRICE ELEMENTARY SCHOOL

BENJAMIN HARTMAN, PRINCIPAL

1901 W. State Blvd. • Fort Wayne, IN 46808

260.467.4950

Pre-kindergarten through fifth grade

### School Summary

Price Elementary School motivates and challenges students to be active and independent lifelong learners. Its focus is on the academic and social development of the individual child.

### Programs

- Tutoring and homework assistance programs are offered to help students reach their academic goals.
- Students may participate in Young Authors and Science Fair.
- Strong parent and community support make Price a neighborhood school.
- Pre-kindergarten offered at Washington.
- Special Education pre-kindergarten is offered.
- English Language Learner (ELL) program is offered to students for whom English is a new language.
- Federally-funded Title I programs support additional resources for improving student performance, including Title I pre-kindergarten.

### Co-curricular Activities

- Girl Scouts and Boy Scouts
- FWCS Study Connection
- Spell Bowl
- Chess Club
- Community sports
- Math Bowl
- Safety Patrol Team
- Girls on the Run

### Community Partnerships

- Dana and Design Collaborative are Study Connection partners
- Big Brothers Big Sisters Lunch Buddies
- Real Men Read
- Junior Achievement
- Rising Star
- Price serves as a training and observation school for Purdue University Fort Wayne, University of St. Francis and Indiana Tech
- Three Rivers Wesleyan Church, The Pointe and Trinity Episcopal Church support students and staff

### Childcare

Before-school and after-school childcare is offered at on-site by the YMCA.

## ST. JOSEPH CENTRAL ELEMENTARY SCHOOL

SUSANNE TIEMAN, PRINCIPAL

6341 St. Joe Center Rd. • Fort Wayne, IN 46835  
260.467.6100  
Kindergarten through fifth grade

### School Summary

St. Joseph Central Elementary School cultivates collaboration between all members of the community to promote academic, physical, emotional and social growth for every child. Together we strive to challenge each learner to think critically, and to solve problems creatively in a safe and caring environment.

### Programs

- Life-long sports and health education are promoted in physical fitness programs.
- Rich and varied experiences in art and music promote creativity and cross-curricular connections.
- English Language Learner (ELL) program is offered to students for whom English is a new language.
- Students may participate in Young Authors.
- An active PTA promotes parental involvement and supports a variety of school programs.
- Family events held throughout the year promote an active partnership to enhance student success.
- Teachers regularly employ technology to enhance instruction in math, reading and language arts.
- Fifth grade students collaborate to produce an annual musical under the direction of the specials teachers.
- Students are offered the opportunity to learn about finance through weekly banking at school.

### Extracurricular Activities

- Choir
- Art Adventures
- Science Bowl
- Math Bowl
- FWCS Study Connection
- Cross Country
- Journalism/Yearbook

### Community Partnerships

- Medical Protective and St. Joe United Methodist Church are Study Connection partners
- Three Rivers Federal Credit Union
- Good Shepherd United Methodist Church

### Childcare

Before-school and after-school childcare is offered on-site by the YMCA.

“Our best hope collectively is that deep learners inherit the world.”

~Deep Learning: Engage the World, Change the World

## SHAMBAUGH ELEMENTARY SCHOOL

NEIL RUPP, PRINCIPAL

5320 Rebecca St. • Fort Wayne, IN 46835  
260.467.6150  
Kindergarten through fifth grade

### School Summary

Shambaugh Elementary School provides a student-centered environment focusing on meeting the needs of all students. The school strives to meet or exceed academic benchmarks to ensure each student succeeds academically, socially and emotionally. Shambaugh is committed to partnering with families and the community to build a positive and welcoming culture.

### Programs

- Students are rewarded with monthly special activities for following school-wide expectations.
- Parent involvement programs and family night activities are offered.
- An active PTA promotes parental involvement and offers ongoing support to the school.
- Teachers integrate laptops or iPads into daily lessons to promote technology skills.
- English Language Learner (ELL) program is offered to students for whom English is a new language.

### Extracurricular Activities

- Cross Country
- FWCS Study Connection
- Mileage Club/City Cross Country
- Art Club
- Spring concert
- Safety Patrol
- Basketball team
- Choir

### Community Partnerships

- Bethany United Methodist Church is Study Connection partner
- Big Brothers Big Sisters Lunch Buddies
- LifeBridge Church through Rising Stars Program
- Bethany United Methodist Church

### Childcare

Before-school and after-school childcare is offered on-site by the YMCA.





## SOUTH WAYNE ELEMENTARY SCHOOL

**BRENDA WEST, PRINCIPAL**

810 Cottage Ave. • Fort Wayne, IN 46807  
260.467.8100

Pre-kindergarten through fifth grade

### School Summary

At South Wayne Elementary School, students, parents and staff members value learning, learn aggressively and work collaboratively to ensure success for every child. The school is driven by the relentless pursuit of exceptional performance on work products and authentic tasks that result in mastery of state and national standards. High expectations are clearly visible in the way students and staff interact and in the work they produce.

### Programs

- Students complete relevant and rigorous standards-based learning projects based on Indiana Standards and FWCS curriculum guide.
- A growing PTA and Quality Improvement Team provide opportunities for parents to become active partners in improving learning for all students.
- Fun family events throughout the school year promote parent, child and school relationships while enhancing knowledge of grade level standards.
- The Blessings in a Backpack weekend food program is offered to eliminate hunger as an academic barrier.
- English Language Learner (ELL) program is offered to students for whom English is a new language.
- Federally-funded Title I programs support additional resources for improving student performance, including Title I pre-kindergarten.
- Club Orchestra, otherwise known as Club O, offers students in grades PK-5 the opportunity to learn to play the violin after school 3 days a week. Students in lower grades have the opportunity to participate in dance and movement classes 1 time each week during the school day.

### Co-curricular Activities

- Before-school and after-school clubs combined with lunch recess opportunities enhance reading, writing, math and service skills.
- FWCS Study Connection
- Basketball
- Soccer
- Service Work
- Radio Announcing
- Music
- Math Bowl
- Girls on the Run
- Robotics
- Cheer Squad
- Student Council
- School Post Office
- Student Ambassador
- Cross Country
- Dance
- Hand chimes
- Violin

### Community Partnerships

- Big Brothers Big Sisters Lunch Buddies
- First Presbyterian Church
- Study Connection

### Childcare

After-school childcare is offered at Harrison Hill by the YMCA.

## STUDY ELEMENTARY SCHOOL

**ELIZABETH KLEBER, PRINCIPAL**

2414 Brooklyn Ave. • Fort Wayne, IN 46802  
260.467.8500

Pre-kindergarten through fifth grade

### School Summary

Study Elementary School strives to be an exemplary learning community. The foundation of this community is built upon strong relationships between staff, students, parents and community partners; relevant and engaging learning opportunities; and effective communication. We challenge ourselves to become more than we think we can be and work to better our community. Our students become lifelong learners, critical thinkers and compassionate problem solvers.

### Programs

- Study's families are welcomed to the building for special family involvement nights, including literacy and math nights.
- After-school programs offer additional support, including Project READS and Study Connection.
- Study has a boy and girls club to promote leadership skills.
- Uniforms are required to promote a positive school climate as a priority and strong school community.
- Study has its own garden that is cared for by students and special guest master gardeners throughout the year.
- An active PTA promotes parental involvement in educating students.
- Study offers a Young Author program.
- The Blessings in a Backpack weekend food program is offered to eliminate hunger as an academic barrier.
- English Language Learner (ELL) program is offered to students for whom English is a new language.
- Federally-funded Title I programs support additional resources for improving student performance, including full-day Title I pre-kindergarten.

### Co-curricular Activities

- Garden Club
- Young Authors
- Sewing Club
- Math Bowl
- Runners Club
- Coding
- FWCS Study Connection
- Student Council
- Basketball
- Cross Country and
- Science Club

**Community Partnerships**

- Swiss Re, Tomkinson Auto and USI Insurance are Study Connection partners.
- Big Brothers Big Sisters School Buddies
- Allen County Education Partnership for Project READS
- NIPSCO
- Rising Stars Program Associated Churches
- Southwest Lutheran Church

**Childcare**

Before-school and after-school childcare is offered at Washington by the YMCA.

**WASHINGTON ELEMENTARY SCHOOL**

**DANENE NEFF, PRINCIPAL**

1015 W. Washington Blvd. • Fort Wayne, IN 46802  
260.467.8150

Pre-kindergarten through fifth grade

**School Summary**

Washington Elementary School seeks to enhance student academic achievement by focusing on continuous improvement and child-centered learning and providing students with the essential foundation for making positive societal contributions. Its focus is on language arts and math.

**Programs**

- Focus on Health and Wellness topics in classrooms and special areas.
- Strategies incorporated around Neuroscience and Conscious Discipline.
- Extensive parent involvement in programs supports learning.
- Early Act - A student-led rotary club sponsored by the Fort Wayne Rotary Club.
- The English Language Learner (ELL) program is offered to students for whom English is a new language.
- Federally-funded Title I programs support additional resources for improving student performance, including Title I pre-kindergarten.

**Co-curricular Activities**

- Cross Country
- Girls on the Run
- Spell Bowl
- FWCS Study Connection
- Basketball
- STEAM Team
- Math Bowl

**Community Partnerships**

- Emmanuel St. Michael Church
- First Presbyterian Church
- Rotary Club of Fort Wayne
- Big Brothers Big Sisters Lunch Buddies
- Allen County Education Partnership for Project READS
- Local universities provide assistance in the classroom

**Childcare**

Before-school and after-school childcare is offered on-site by the YMCA.

**WASHINGTON CENTER  
ELEMENTARY SCHOOL**  
**KEITH GOLDFUSS, PRINCIPAL**

1936 W. Wallen Rd. • Fort Wayne, IN 46818  
260.467.6250  
Kindergarten through fifth grade

**School Summary**

Washington Center Elementary School motivates and challenges students to be active, independent and lifelong learners.

**Programs**

- Curriculum is supported by enriched technology guided by experienced teachers.
- English Language Learner (ELL) program is offered to students for whom English is a new language.

**Co-curricular Activities**

- Spell Bowl Team
- Chess Club
- Cheerleading
- FWCS Study Connection
- Math Bowl Team
- Running Club
- Basketball

**Community Partnerships**

- Harris is our Study Connection partner
- The Journey Church
- Real Men Read
- Junior Achievement
- Active PTA

**Childcare**

Before-school and after-school childcare is offered on-site by the YMCA.



**WAYNE DALE ELEMENTARY SCHOOL****KRISTEE HOFFNER, PRINCIPAL**

7201 Elzey St. • Fort Wayne, IN 46809

260.467.8820

Pre-kindergarten through fifth grade

**School Summary**

Waynedale Elementary School concentrates on students exceeding academic benchmarks to ensure each student succeeds academically, physically and socially at his or her maximum ability. Students take part in a rigorous curriculum that supports the whole student.

Teachers and students practice and model Deep Learning Pragogies to support Character, Citizenship, Communication, Collaboration, Creativity and Critical Thinking.

**Programs**

- Student recognitions celebrate success, emphasize good behavior and honor diversity.
- An active PTA promotes parental involvement.
- Students in grades K-2 have 1:1 iPads. Students in grades 3-5 have 1:1 Lenovo ThinkPads.
- Young Authors is offered.
- Each Friday, students participate in Tech Friday through involvement with Makers-space, Coding, Robotics and other activities that deepen and enrich learning.
- The English Language Learner (ELL) program is offered to students for whom English is a new language.
- Federally-funded Title I programs support additional resources for improving student performance, including Title I pre-kindergarten.
- Club Orchestra, otherwise known as Club O, offers students in grades 3-5 the opportunity to learn to play the violin after school 3 days a week. Students perform with the Philharmonic at the end of the school year.
- Club Kid O is offered to students in grades K-2. Students learn to sing and play Orff instruments and perform as an ensemble.

**Co-curricular Activities**

- Running Clubs
- FWCS Study Connection
- Basketball
- Little Kids Rock
- Robotics
- Club Orchestra

**Community Partnerships**

- Calvary United Methodist Church and Waynedale United Methodist Church are Study Connection partners
- Big Brothers Big Sisters School Buddies
- Artemis International
- Waynedale Chamber of Commerce

**Childcare**

Before-school and after-school childcare is offered at Maplewood by the YMCA.

**WEISSER PARK ARTS MAGNET ELEMENTARY SCHOOL****MELISSA PLUMB, PRINCIPAL****MAGNET SCHOOL**

902 Colerick St. • Fort Wayne, IN 46806

260.467.8875

First through fifth grades

**School Summary**

Weisser Park Arts Magnet Elementary School seeks to produce successful learners through a fusion of rigorous academics and distinguished arts instruction. In collaboration with Discovery Education, Weisser Park is building a STEAM (Science, Technology, Engineering, Art and Math) culture that inspires and cultivates the next generation of problem solvers, inventors and leaders. Students have access to a STEAM lab to enhance their academic experience. Weisser Park is part of the arts magnet program, educating students from Whitney Young Early Childhood Center in preparation for Memorial Park Middle School.

**Programs**

- Magnet school featuring a strong core arts curriculum in music, visual arts, theater arts and dance, with curriculum based on the National Standards for Arts Education, is available to every student.
- An in-school choice program offers additional instruction in band, strings, choir, piano, theater arts, dance, pottery, textiles, photography, drawing and painting.
- Music composition, recording and production are offered in an arts media lab.
- An active multicultural education program focuses on a different continent each year, creating Common Threads of diversity.
- Technology skills are instructed in the computer lab and in the classroom.
- High ability students are identified and additional services provided.
- Town Meetings are held to highlight student accomplishments in classrooms and in the arts.
- Students are given multiple opportunities to perform in drama and musical productions.
- Ensemble performing arts groups are featured during the Winter Arts Festival and May Celebration.
- An in-school art gallery showcases student art work.
- The English Language Learner (ELL) program is offered to students for whom English is a new language.
- STEAM education is rapidly becoming part of the weekly curriculum.

“Failure should not be the end. It should be the beginning of learning.”  
~ Deep Learning: Student Quote



**Co-curricular Activities**

- Math Bowl Team
- Book Clubs
- FWCS Study Connection
- Robotics Club
- Spell Bowl Team
- Project READS
- Basketball/Cheerleading

**Community Partnerships**

- Junior Achievement
- Fort Wayne Dance Collective
- Mynett Music
- Civic Theater
- Fort Wayne Museum of Art
- Paragon Tube
- Fort Wayne Parks and Recreation
- Allen County Education Partnership for Project READS
- Superior Essex is Study Connection partner
- United Way
- Sweetwater
- Fort Wayne Philharmonic
- Boys and Girls Club
- Elevate City Church
- Arts United

**Childcare**

Before-school and after-school childcare is offered on-site by the YMCA.



# COMMUNICATION





## TOWLES MONTESSORI ELEMENTARY

JENNIFER WITZIGREUTER, PRINCIPAL

## NEW TECH MIDDLE SCHOOL

DEREK LEININGER, NEW TECH DIRECTOR

### MAGNET SCHOOL

420 E. Paulding Rd. · Fort Wayne, IN 46816

260.467.4300

Grades 1-5, Montessori

Grades 6-8, New Tech

#### School Summary

Towles Montessori Elementary School uses the Montessori method for instruction for grades one through five, which focuses on the natural stages of child development and provides an environment that cultivates the students' desire to learn. Towles first through fifth grade provides a Montessori-certified instructional staff, quality Montessori and supplemental materials, and a cooperative and supportive parent community.

Towles New Tech Middle School delivers instruction in a project-based learning method. Students at Towles New Tech are challenged daily as they engage in integrated content classes using technology, critical thinking and creativity to complete rigorous, real-world projects and tasks. By completing projects in groups, New Tech students learn the skills needed for successful collaboration.

#### Programs

- Classrooms in grades one through six are multi-age, allowing students to stay with the same teacher for three years at the elementary level.
- Specially trained teachers use not only the Montessori/New Tech method but also address all Indiana State Standards and FWCS curriculum.
- Through practice with an array of hands-on manipulative materials, students learn about initiating and completing work cycles, which require greater concentration and develop independence and time management.
- "Follow the Child," was the philosophy believed by Dr. Maria Montessori when she created the program more than 100 years ago. Children learn by doing, they learn from each other and they learn at their own pace.
- The 6th, 7th and 8th grade New Tech philosophy emphasizes student agency, collaboration and both oral and written communication.
- Towles New Tech offers algebra and advanced Spanish courses for high school credit.

#### Co-curricular Activities

- Towles offers all middle school sports
- Students are encouraged to perform at least 10 hours each year of community service and outreach through school-based projects and personal volunteerism

- A variety of clubs are offered

#### Community Partnerships

- JA in a Day
- Numerous community agencies and individuals for expertise needed to support New Tech projects

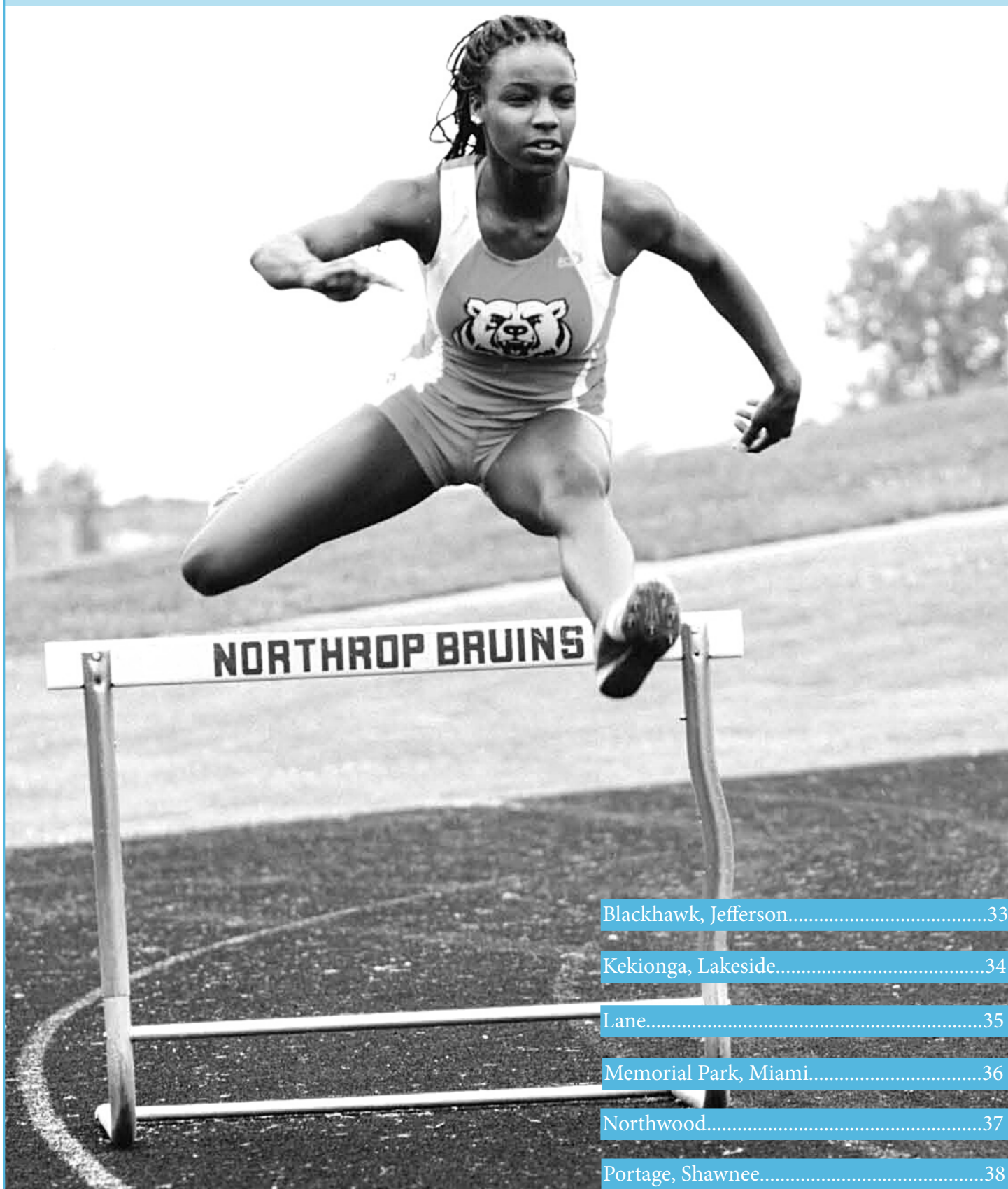
#### Childcare

Before-school and after-school childcare is offered onsite by the YMCA.





# CHARACTER



Blackhawk, Jefferson.....33

Kekionga, Lakeside.....34

Lane.....35

Memorial Park, Miami.....36

Northwood.....37

Portage, Shawnee.....38

**BLACKHAWK MIDDLE SCHOOL****ZACHARY HARL, PRINCIPAL**7200 E. State Blvd. • Fort Wayne, IN 46815  
260.467.4885**School Summary**

Blackhawk Middle School educates all students to high standards. It seeks to provide a positive student-centered learning environment where students acquire knowledge and skills needed for success in school and life.

**Programs**

- Emphasis is on a rigorous academic schedule that facilitates enrichment opportunities, including high school credit Spanish and advanced math and language arts, for all students.
- Elective related arts offerings for all grades include art, computer application and creative writing.
- Blackhawk is fully wireless with technology use through language arts and math classes.
- An award-winning fine arts program features drama, full-year band and orchestra opportunities for students and an after-school jazz band and vocal ensemble that participate in local and statewide competitions.
- The English Language Learner (ELL) program is offered to students for whom English is a new language.

**Co-curricular Activities**

- |  |                            |
|--|----------------------------|
| • Academic Teams   | • Science Club             |
| • Jazz Band  | • Robotics                 |
| • Future City Club   | • Study Tables             |
| • Wrestling Club   | • All middle school sports |
| • Extensive Intramural/Club Program                                |                            |
| • Drama Theater Productions in a newly renovated theatre classroom |                            |

**Community Partnerships**

- |                      |                 |
|----------------------|-----------------|
| • Georgetown Library | • Biggby coffee |
| • FW Komets          | • IHOP          |

**JEFFERSON MIDDLE SCHOOL****NICKOLAS SHARIN, PRINCIPAL**5303 Wheelock Rd. • Fort Wayne, IN 46835  
260.467.4825**School Summary**

Jefferson Middle School is committed to creating a positive environment where early adolescents achieve high levels of learning. Staff members promote student success in a school striving for academic excellence, social equity and developmentally appropriate programming. Jefferson is full of Patriot Pride.

**Programs**

- A rigorous academic program is offered, including advanced courses in business, language arts, math and Spanish.
- There are broad offerings in performing arts, including show choir, concert choir, band, orchestra, multi-media production and a musical theater program.
- A school-wide emphasis on literacy and math focuses on preparing students for success in high school and beyond.
- A fitness center promotes health and wellness for the school community. Health club quality equipment is available for student use during scheduled classes and in an after-school club.
- Jefferson benefits from an award-winning PTSA. Students, staff and families work together on a number of initiatives to promote learning through a climate of support and partnership.

**Co-curricular Activities**

- |                            |               |
|----------------------------|---------------|
| • Academic Team            | • Leo Club    |
| • Anime                    | • Pep Club    |
| • All middle school sports | • Yearbook    |
| • Intramurals              | • Future City |

**Community Partnerships**

- |                         |                           |
|-------------------------|---------------------------|
| • Parkview Hospital     | • Chapel Ridge Lions Club |
| • Manchester University |                           |



**KEKIONGA MIDDLE SCHOOL****MARK BAILEY, PRINCIPAL**2929 Engle Rd. · Fort Wayne, IN 46809  
260.467.6600**School Summary**

Kekionga Middle School is home of the Warriors. Its staff is student-centered, data-driven and goal-oriented. We live our Kekionga war cry by exhibiting wisdom, achievement and respect.

**Programs**

- A rigorous curriculum includes advanced class offerings in language arts and math as well as algebra, business and Spanish for high school credit.
- Kekionga has one of the few middle school steel drum bands in the state. Kekionga Steel Drumz performs in a variety of settings and released a CD in 2010.
- Kekionga has been a member of the National Junior Honor Society Chapter since 2009.
- Warrior Bucks, a positive behavior rewards program, encourages students to make positive choices demonstrating readiness, responsibility and respect.
- Longer sixth-grade class periods allow for additional personalized small group instruction to support students in their transition from elementary to middle school.
- There is a school-wide focus on vocabulary development and literacy within all content areas.
- Kekionga offers music arts with an emphasis on guitar and keyboard instruction.
- The English Language Learner (ELL) program is offered to students for whom English is a new language.
- Federally-funded Title I programs support additional resources for improving student performance in math and language arts classes.

**Co-curricular Activities**

- Chess Club
- Karaoke Club
- Gamers Club
- Board Game Club
- Social Justice Club
- Academic Team
- Future Cities
- Jazz Band
- Drawing Club
- Intramurals
- Spell Bowl

**Community Partnerships**

- Associated Churches (Thanksgiving and Christmas families)
- Shadow for Success (boys' mentoring group)
- Lincoln Financial Group (JA in a Day)
- Boys and Girls Club
- Sources of Strength (suicide prevention program)
- Riley Children's Hospital
- Pathway Community Church

**LAKESIDE MIDDLE SCHOOL****ALAN JONES, PRINCIPAL**2100 Lake Ave. · Fort Wayne, IN 46805  
260.467.8625**School Summary**

Lakeside Middle School is committed to addressing the needs of the whole child as they cross the bridge from elementary to high school. It provides a supportive environment with high-quality, data-driven teaching and learning.

**Programs**

- A rigorous curriculum includes advanced class offerings in language arts and math as well as algebra 1, business foundations and Spanish for high school credit.
- Students take ownership of academic progress towards their personal achievement goals through ongoing data conferences with faculty.
- Lakeside is a fully wireless building that integrates iPads/Think Pads in all areas of curriculum.
- Extended sixth-grade class periods allow for additional personalized small group instruction to support students in their transition from elementary to middle school.
- Lakeside follows the FWCS Middle School Dress Policy.
- Junior Achievement's national program "International Marketplace" focuses on bringing real-world business concepts and applications into social studies classes.
- Students have the opportunity to participate in numerous after-school clubs and activities on a weekly basis.
- Students have leadership opportunities by serving as Ambassadors and/or being on the Principal's Advisory Group.
- Lancer Loot is an incentive-based program for all students to be recognized for the positive behavior showing respect, readiness and responsibility.
- Lakeside offers the b Instrumental free musical instrument program. Students can participate in string orchestra, band, jazz band and/or drums.
- The English Language Learner (ELL) program is offered to students for whom English is a new language.
- Federally-funded Title I programs support additional resources for improving student performance in math and language arts classes.
- Study tables offered weekly after school.

**Co-curricular Activities**

- Academic Teams
- Lakeside Dance Troupe
- National Junior Honor Society for all students after school
- Individualized tutoring
- Health Club
- All middle school sports



**Community Partnerships**

- Precision Metals
- Fort Wayne Dance Collective
- AWP
- The Plex
- Laser X Care
- Voice of Unity
- Roller Dome North
- Redeemer Baptist
- Parkview
- Junior Achievement
- African American Health
- Alliance

**LANE MIDDLE SCHOOL****MATT HAREN, PRINCIPAL**

4901 Vance Ave. • Fort Wayne, IN 46815  
260.467.4400

**School Summary**

Lane Middle School is committed to creating a positive environment where all students are encouraged to make sound personal and academic decisions to high standards. Lane is a Community of Learners and Leaders.

**Programs**

- All students receive a rigorous academic schedule that facilitates enrichment and remediation opportunities daily through all classes with an emphasis on relationships, rigor and relevance.
- Lane offers advanced language arts and math classes for all students, as well as high school credit for Spanish, algebra 1 and business foundations.
- A Successful Gold Stamp Program, recognizes students for being Respectful, Responsible and Ready.
- The English Language Learner (ELL) program is offered to students for whom English is a new language.
- The National Junior Honor Society is offered to the top academic scholars earning a 3.5 GPA or higher. The chapter focuses on academics and service hours.
- Lane offers the b Instrumental free musical instrument program. Students can participate in string orchestra and/or instrumental band.

**Co-curricular Activities**

- Boys Mentor Program
- School Yearbook
- All middle school sports
- Game Club
- Computer Club
- RAK (Random Acts of Kindness)
- Girls Mentor Program
- Academic Teams
- Guitar Club
- Jazz Band

**Community Partnerships**

- Laser X, Georgetown Entertainment and Bells Skating Rink provide student incentives annually.
- Jackson R Lehman, YMCA
- Junior Achievement-JA
- Bigby Coffee
- Good Shepherd United Methodist Church



“Making this kind of learning the norm for all schools and classrooms doesn’t happen by chance.”

~ Deep Learning: Engage the World, Chance the World



**MEMORIAL PARK MIDDLE SCHOOL****BRADLEY CROZIER, PRINCIPAL****MAGNET SCHOOL**2200 Maumee Ave. • Fort Wayne, IN 46803  
260.467.5300**School Summary**

Memorial Park Middle School is a fine arts magnet middle school offering not only advanced math and language arts opportunities, but also high quality elective courses for enrichment in instrumental music, art, foreign language, choir, speech and drama. Our program allows students to develop a well-rounded foundation for continued success into high school. We continually strive to challenge and stretch the learning of our diverse student body through many courses. In collaboration with Discovery Education, Memorial Park is building a STEAM (Science, Technology, Engineering, Art and Math) culture that inspires and cultivates the next generation of problem solvers, inventors and leaders.

**Programs**

- Wide variety of elective opportunities for students to explore their various interests. Courses include, but are not limited to, instrumental music, vocal music, orchestra, business education, media arts, visual arts, world languages, creative writing, speech and drama and physical education.
- Advanced elective opportunities includes Jazz Band, Show Choir and Advanced Visual Art. High school credit options for electives include 1st and 2nd year Spanish and French.
- Advanced core academic course options are offered for English language arts and math. High school credit opportunities for students taking algebra II are available for students reaching those levels.
- Many opportunities for students to become involved with competitive co-curricular clubs beyond athletics. We regularly have students compete at the state and national level in academic, speech and music competitions.
- The music program (instrumental and vocal) provides both individual and group performance opportunities so our students can experience growth in their musical ability. Co-curricular offerings within the department include: ISSMA Solo and Ensemble Festival, Jazz Combos, Jazz Big Band and Show Choir.
- Students enrolled in the Media Arts program have access to state of the art production equipment, ample opportunities to create and produce media productions and develop the ability and skills to work in teams.
- For students interested in athletics, we have competitive programs for boys and girls cross country, basketball, swimming and soccer.
- Co-curricular clubs, such as the Ambassador Program and National Jr. Honor Society, help students learn to assist school and community through responsible leadership and positive character attributes.

- Technology is regularly integrated into the school curriculum to enhance student learning. Students are provided an assigned student device to use throughout the school day.
- The English Language Learner (ELL) program is offered to students for whom English is a new language.
- Our Applied Skills special education program focuses on helping students develop work-ready skills that will better prepare them for the transition to high school.
- Students participate in monthly Pirate Time advisory groups. These groups focus on helping all students feel connected to the school and develop their personal social and emotional skills.

**Co-curricular Activities**

- |                                    |                          |
|------------------------------------|--------------------------|
| • Academic Teams                   | • Musical/Play           |
| • Spell Bowl                       | • Soccer                 |
| • Various after-school clubs       | • Swimming               |
| • eCyberMission Science Team       | • Cross Country          |
| • Basketball                       | • Jazz Combos            |
| • Show Choir                       | • Jazz Big Band          |
| • Brothers to Brothers             | • Sisters to Sisters     |
| • Cheerleading                     | • Competitive Chess Team |
| • Competitive Robotics Team        |                          |
| • ISSMA Solo and Ensemble Festival |                          |

**Community Partnerships**

- |   |                    |
|---|--------------------|
| • Art Link  | • Arts United      |
| • Fort Wayne Philharmonic   | • Sweetwater Sound |
| • River Front Development Committee   |                    |
| • Students are showcased in the Embassy Festival of Trees, Taste of the Arts and other local venues |                    |
| • Memorial Park has partnerships with many local musicians  |                    |

**MIAMI MIDDLE SCHOOL****RENA CLEMONS, PRINCIPAL**8100 Amherst Dr. • Fort Wayne, IN 46819  
260.467.8560**School Summary**

Miami Middle School's students are "P.R.O.'s" inside and outside of the classroom. We are always striving to be Prepared, Respectful and Open to Learning in whatever we do.

**Programs**

- Students understand how their individual data impacts school-wide goals. They are building a culture of accountability amongst peers, and understand their personal responsibility for achievement. Each student will know their present levels, how to improve their current abilities, and with teachers and administration develop action steps to realize their desired results.

- Students and teachers utilize iPads, TV monitors and Apple TV's in all subjects to enhance students' learning.
- The English Language Learner (ELL) program is offered to students for whom English is a new language.
- Federally-funded Title I programs support additional resources for improving student performance and meeting school-wide goals.
- Advanced courses are offered in all grades.
- High school credit courses are offered for eighth grade students in math, Spanish and business technology.
- The related arts program offers many curricular and extracurricular options including show choir, instrumental band, orchestra, art, physical education, business technology, MiamiTV and Spanish.
- Miami has an award-winning show choir called the Miami Sound Machine.
- Miami has a state-of-the-art television studio. Miami Minutes is the student-led video production program that is broadcast daily for faculty and students.
- Miami fields 11 athletic teams throughout the school year and has a rich tradition of success.
- Miami offers the b Intrumental free musical instrument program. Students can participate in string orchestra and/or instrumental band.

#### **Co-curricular Activities**

- Academic Team
- Chess Club
- Robot Club
- Makerspace
- Minecraft Club
- Yo-Gi-OI
- Science Club/Future City
- National Junior Honor Society
- STARBASE
- Chinlone Club
- Walking Club
- Intramural Sports
- Masterminds
- Knitting Club

#### **Community Partnerships**

- Churubusco Church of the Nazarene
- Chick-fil-A
- Junior Achievement
- Kroger
- Mt. Calvary Lutheran Church
- The Franciscan Center
- Wal-mart/Sam's Club
- Fort Wayne Komets
- McDonald's (Waynedale)
- Pizza Hut
- Target
- Papa John's (Waynedale)

“The role of the teacher is  
to create the conditions for  
invention rather than ready-made  
knowledge.”  
~ Seymour Papert

## **NORTHWOOD MIDDLE SCHOOL**

**LINDSEY BAUMGARTNER, PRINCIPAL**

1201 E. Washington Center Rd. • Fort Wayne, IN 46825

260.467.2930

#### **School Summary**

All students and staff will rise to high expectations by modeling Respect, Effort and Determination in all aspects of school life.

#### **Programs**

- Northwood has a television studio (CTV) that is a state-of-the-art facility. The media class produces various TV broadcast programs.
- The related arts program offers many curricular and extracurricular options, including show choir, musicals, strings, art and physical education. Business and Spanish are offered for high school credit.
- The English Language Learner (ELL) program is offered to students for whom English is a new language.
- Northwood offers the b Instrumental free musical instrument program. Students can participate in string orchestra and/or instrumental band.

#### **Co-curricular Activities**

- All middle school sports
- Show Choir
- Intramurals
- Academic Bowl
- Spell Bowl
- Study Tables
- Chess Club
- National Junior Honor Society

#### **Community Partnerships**

- Wal-Mart







**PORTAGE MIDDLE SCHOOL****MIKE CHRISTNER, PRINCIPAL**3521 Taylor St. · Fort Wayne, IN 46802  
260.467.4500**School Summary**

Portage Middle School values high levels of learning for all students through strong communication among students, parents, families and the community. In collaboration with Discovery Education, Portage is building a STEM (Science, Technology, Engineering and Math) culture that inspires and cultivates the next generation of problem-solvers, innovators and leaders. By providing meaningful, interactive opportunities for students to become engaged in these subject areas, Portage will prepare students to be qualified and competitive candidates in the future economy and guide them towards the emerging careers of tomorrow.

**Programs**

- Portage offers Spanish Immersion courses, designed to continue the program started at Lindley Elementary and to create bilingual learners with Spanish and English language skills. Students receive one hour in Spanish Immersion where speaking the language is a priority.
- WRAM, the Portage TV show, broadcasts informative programs each week for students and staff.
- It is a specific goal of the school to involve every student in one of the school's meaningful academic and extracurricular programs.
- The English Language Learner (ELL) program is offered to students for whom English is a new language.

**Co-curricular Activities**

- |                            |                                 |
|----------------------------|---------------------------------|
| • Academic Bowl            | • Guitar Club                   |
| • Spell Bowl               | • National Junior Honor Society |
| • Mentoring                | • Bully Busting                 |
| • Student Council          | • Character Counts              |
| • Maker Space Club         | • Pokemon Club                  |
| • PBIS Leadership Club     | • Knitting Club                 |
| • All middle school sports | • Chess/Checkers Club           |

**Community Partnerships**

- |                         |                |
|-------------------------|----------------|
| • Five Below            | • ProBowl West |
| • Fort Wayne Sport Club | • Chick-fil-A  |
| • Laser X               | • Target       |

**SHAWNEE MIDDLE SCHOOL****MAUREEN BENDER, PRINCIPAL**1000 E. Cook Rd. · Fort Wayne, IN 46825  
260.467.6525**School Summary**

Shawnee Middle School is dedicated to providing an organized, child-centered and supportive learning experience for all students. Shawnee reflects a positive school climate focused on academic excellence and achievement, positive character development and service to the community.

**Programs**

- High school credit offered in algebra, Spanish and business.
- Academic safety nets are provided for students needing additional support and enrichment activities are offered for students who are ready to move beyond grade level standards.
- Extensive community outreach means working with mentors, community agencies and local churches.
- The English Language Learner (ELL) program is offered to students for whom English is a new language.
- Shawnee offers the b Instrumental free musical instrument program. Students can participate in string orchestra, band, jazz band and/or drums.

**Extracurricular Activities**

- |  |                                  |
|--|----------------------------------|
| • Spell Bowl                             | • Academic Teams                 |
| • Show Choir                             | • Pep Band                       |
| • Dance Team                             | • Extended Learning Study Tables |
| • National Junior Honor Society          | • Art Club                       |
| • Robotics Team                          | • Radio/TV classes               |
| • All middle school sports               | • Boys and Girls                 |
| • Mentoring Clubs                        |                                  |
| • Photography and TV Clubs               |                                  |
| • Scholastic Art and Writing Competition |                                  |

**Community Partnerships**

- |                             |                |
|-----------------------------|----------------|
| • YMCA                      | • Artlink      |
| • Pathway Community Church  | • Penn Station |
| • Northridge Baptist Church |                |



# CRITICAL THINKING



Career Academy, Amp Lab.....41

North Side.....42

Northrop. Snider.....43

South Side.....44

Wayne.....45



**FWCS CAREER ACADEMY****JESSE WEBB, PRINCIPAL**1200 S. Barr St. • Fort Wayne, IN 46802  
260.467.1010**School Summary**

The FWCS Career Academy at Anthis serves Northeast Indiana, including 17 high schools, with a broad array of career and technical programs. Emphasis is placed on using new technology, developing a strong work ethic and understanding human diversity while acquiring a desire to learn and gain a sense of personal achievement.

**Program of Study**

The FWCS Career Academy is the site for the Career Education Program of Study, which enables students to prepare for post-secondary education and to gain marketable career skills. Career areas include:

- Health Sciences
- Aviation Maintenance
- Careers in Early Childhood Education
- Construction Technology
- Public Safety
- Culinary Arts
- Information Technology Academy
- Work Based Learning Capstone and Cooperative Education
- Automotive Technology
- Manufacturing
- Cosmetology

**College and Career Readiness**

- Dual-credit opportunities exist with local colleges and universities.
- National, state and local certifications are issued in most programs.
- Programs are continually updated to meet industry-based standards.
- Students are offered unique opportunities to experience career pathways.
- Each career prep program area offers hands-on curriculum.

**Community Partnerships**

- Parkview Health
- Vincennes University
- St. Anne's Home
- Diester Machine
- MicroPulse
- City of Fort Wayne
- Evans Toyota
- Three Rivers Ambulance Authority
- Home Builders Association
- Fort Wayne Fire Department
- Fort Wayne Police Department
- Airport Board Authority/Smith Field
- Ivy Tech
- University of St. Francis
- Early Childhood Alliance
- Fort Wayne Metals
- Greater Fort Wayne Inc.
- Sweetwater Sound
- Don Ayres Honda

**AMP LAB @ ELECTRIC WORKS****RILEY JOHNSON, DIRECTOR**Fort Wayne, IN 46802  
~~260.467.1010~~**School Summary**

What if students were challenged to solve real problems for real people? Beginning with the 2022-2023 school year, the Amp Lab at Electric Works gives four hundred 11th and 12th graders from the five Fort Wayne Community Schools the opportunity to enhance their educational experience. Students will spend half of their day at their comprehensive high school taking core classes and half of their day at the Amp Lab bringing their learning to life!

We exist to create opportunities for students to explore their passions, apply their talents, and make our community a better place. The Amp Lab is a unique learning environment built for students of diverse backgrounds to gain real-world experience in an innovative and agile setting. Students will be able to apply in the Winter of the 2021-2022 school year.

**Program of Study****Community Partnerships**

## NORTH SIDE HIGH SCHOOL

DAVID WEST, PRINCIPAL

475 E. State Blvd. • Fort Wayne, IN 46805  
260.467.2800

### School Summary

North Side High School offers a wide variety of programs to prepare students to lead responsible and productive lives. North Side's diverse community of learners includes students from 23 countries who speak 29 different languages and take pride in becoming multilingual, valuable contributors to the community.

### Program of Study

North Side High School is home of the Global Studies/World Languages Program of Study. These programs embeds global knowledge into courses to enable students to work, live and communicate in a global society. Program emphasis is on an understanding of how the world's people and institutions are interconnected and how critical global economic, political, technological, environmental and social systems operate interdependently across the world. North Side is also home to the Vincennes Early College Program. Early College is a 4-year program that allows students to earn college and high school credit concurrently through a rigorous and structured curriculum. Vincennes University provides a program liaison that assists parents and students in the early college process. Students in Early College take dual credit courses that are transferable to universities throughout the state of Indiana.

### College and Career Readiness

- Honors courses offered in English 9 and 10, algebra I, algebra II, geometry, biology and chemistry.
- Collegiate Connection at Purdue University Fort Wayne allows seniors to enroll in up to two regular college classes per semester on Purdue University Fort Wayne campus.
- Collegiate Connection at North Side allows students to earn college credits in composition (12th grade), pre-calculus, calculus, psychology, U.S. history, world history, economics, government, manufacturing/logistics and marketing.
- North Side offers Advanced Placement courses for chemistry and algebra-based physics, government and economics.
- North Side offers Purdue University Fort Wayne Upward Bound, a year-round program consisting of a nine-month Academic Year Component and a six-week Summer Academy with a three-week residential stay. The Academic Year Component includes academic counseling, academic instruction on Saturdays, weekly tutoring, college visits, cultural and social experiences and post-secondary assistance. During the Summer Academy, Upward Bound participants live on campus for three weeks and experience college life, take additional classes, and visit other colleges. This is a commitment until graduation.
- DECA in Employment Co-op through ICE, FWCS Career Academy courses and Educational Professions courses foster growth of future educators at North Side.
- Marching band has qualified for the state finals in 34 of the last 43 years.
- A top dance performance program is offered during the school day.
- A piano keyboarding program is available and held in a state of the art keyboarding lab.

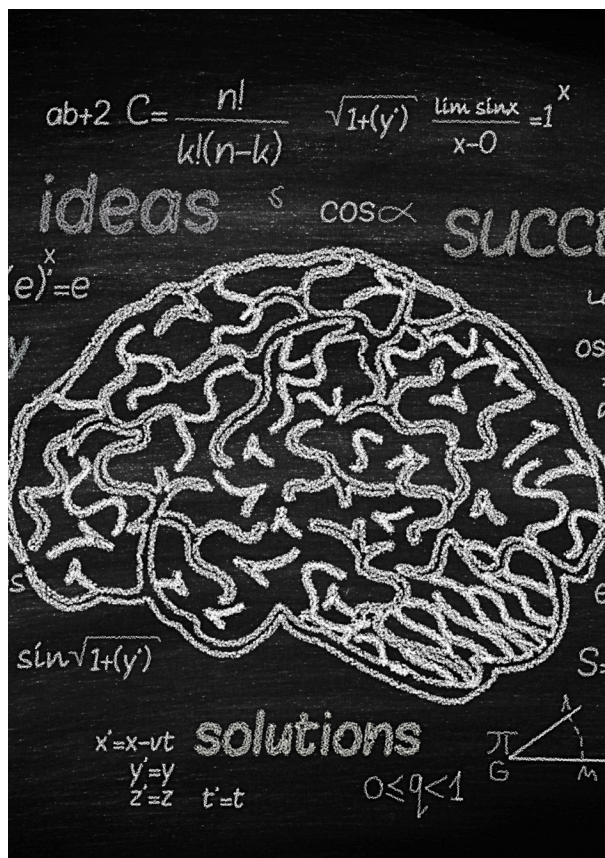
- An award-winning Conexus manufacturing/logistics program offers dual credit through Ivy Tech and allows students to receive industry certification.
- Orchestra, jazz, percussion and concert bands are offered in the music department.
- Elective language offerings in German, Spanish and French.
- The English Language Learner (ELL) program is offered to students for whom English is a new language.

### Extracurricular Activities

- Marching Band
- Dance Teams
- Cheerleading
- Robotics Club
- Chess Club
- FCA
- Young Life
- Student Council
- Canstruction
- Spell Bowl
- Academic Team
- Wildsiders
- Jazz Band
- All high school sports
- IHSAA Leadership Champions
- National Honor Society

### Community Partnerships

Kelley Chevrolet donates a car each year to a student with good attendance. The North Side Alumni Association provides scholarships and grants to students and staff members. Sodexo and the North Side PTSA provide support to students through the school newsletter and intership opportunities. Purdue University Fort Wayne, Trine University, Vincennes University, Ivy Tech, St. Francis University and Indiana Tech are also partners.



**NORTHROP HIGH SCHOOL****BARBARA AHLERSMEYER, PRINCIPAL**7001 Coldwater Rd. • Fort Wayne, IN 46825  
260.467.2300**School Summary**

Northrop High School places an emphasis on a rigorous curriculum to prepare students to be not only college and career ready but also to be positive contributors to the community while providing a safe and caring environment. Its diverse and active student body participates in more than 48 organized activities.

**Program of Study**

Northrop is the site for the Project Lead The Way (PLTW)/Engineering Program of Study. PLTW provides real-world learning and hands-on experience to students interested in engineering, biomechanics, aeronautics and other applied math and science areas. PLTW courses engage students through activities-based, project-based and problem-based learning, which creates an environment for applying engineering concepts to real problems.

**College and Career Readiness**

- Northrop has college partnerships with Trine and Ivy Tech.
- Advanced Placement courses are available for sophomores, juniors and seniors and include government, U.S. and world history, psychology and physics.
- Students can earn dual credit in a variety of academic disciplines including astronomy, chemistry, pre-calculus, biology II, theatre arts, English composition, U.S. history, U.S. government, literature, economics, engineering, music therapy and the Teaching Academy.
- A strong performing arts program includes drama, dance, jazz band, orchestra, concert band, marching band, concert choir and show choir.
- Northrop has state and national award-winning speech and debate teams.
- The Academic Letter program is earned by high performing students.

**Extracurricular Activities**

- Marching Band
- Jazz Band
- Show Choir
- Plays and Musicals
- All high school sports
- Various Clubs

**Community Partnerships**

- Sweetwater
- State Farm Insurance
- Raytheon
- Trine University
- Ivy Tech
- Fifth Third Bank

**SNIDER HIGH SCHOOL****CHAD HISSONG, PRINCIPAL**4600 Fairlawn Pass • Fort Wayne, IN 46815  
260.467.4600**School Summary**

Snider High School seeks to promote academic and intellectual growth to facilitate the acquisition of life skills and to encourage positive social interaction so that students and the community may thrive in an ever-changing environment.

**Program of Study**

Snider is the site for the Project Lead The Way (PLTW)/Biomedical Sciences Program of Study, which is geared toward students contemplating a career in a health field. In addition to rigorous coursework, students have opportunities to participate in internships in various medical, therapeutic or diagnostic fields. The four-year Program of Study connects core classes with a possible medical career, making all courses relevant for students. Beginning 2022-23 school year, Snider will offer 3DE programming for incoming freshmen.

**College and Career Readiness**

- Dual credit classes in pre-calculus, calculus, statistics and all of the Biomedical courses are offered.
- Advanced Placement classes in chemistry, Spanish, statistics, biology, microeconomics, U.S. government, English language and composition, English literature and composition, U.S. history, psychology, calculus, physics, statistics, world history, computer science principles, computer science A, environmental science and German.
- Our Collegiate Connection programs allow students to obtain college credits through Purdue University Fort Wayne and Ivy Tech Community College.
- Snider offers Arabic, French, German and Spanish.
- SAT prep classes are offered.
- Additional course offerings include ICE, DECA, a variety of programs at the Career Academy, digital applications and responsibilities classes, computer science classes, web design courses, programming classes, marketing, Peer Tutoring and JAG (Jobs for America's Graduates)
- Guidance hosts college visits from a variety of schools, supplies students with scholarship information and assists with SAT/ACT sign up.

**Extracurricular Activities**

- Marching and Jazz Band
- Chess Club
- National Honor Society
- Student Council
- Bowling Team
- Dance Team
- Sign Language Club
- Lacrosse Club
- Crochet Club
- Plays and Musicals
- All high school sports
- Hockey Club
- ESports
- Speech & Debate
- French, Spanish and German Clubs

**Community Partnerships**

- Orthopedics Northeast
- Purdue University Fort Wayne
- IUPUI
- University of St. Francis
- Ivy Tech
- Indiana Tech
- Aptera



**SOUTH SIDE HIGH SCHOOL****ADAM SWINFORD, PRINCIPAL**3601 S. Calhoun St. • Fort Wayne, IN 46807  
260.467.2600**School Summary**

The staff at South Side is committed to building the relationships that support students who are being challenged and stretched to learn. The school embraces the diversity of its students, community and faculty. In collaboration with Discovery Education, South Side is building a STEAM (Science, Technology, Engineering, Art and Math) culture that inspires and cultivates the next generation of problem solvers, inventors and leaders.

**Program of Study**

In addition to being a STEAM School, South Side's Program of Study is the International Baccalaureate (IB) Diploma Program, a rigorous pre-university program that can result in a diploma that is recognized by many universities in their admission selection process, course credit, class standing and scholarship eligibility. The IB Program seeks to develop inquiring, knowledgeable and caring young people who help to create a better and more peaceful world through intercultural understanding and respect. South Side has offered the IB Diploma for 19 years and remains the only school in northeast Indiana with this prestigious program.

**College and Career Readiness**

- The IB Diploma subject areas fulfill the state's requirements for College and Career Readiness.
- Dual credit classes are offered in English/language arts, pre-calculus, ethics, philosophy, and world history.
- Advanced Placement classes are offered in calculus, government, economics and psychology.
- South Side offers Purdue University Fort Wayne's Upward Bound, a year-round program consisting of a nine-month Academic Year Component and a six-week Summer Academy with a three week residential stay. The Academic Year Component includes academic counseling, academic instruction on Saturdays, weekly tutoring, college visits, cultural and social experiences and post-secondary assistance. During the Summer Academy, Upward Bound participants live on campus for three weeks and experience college life, take additional classes, and visit other colleges. This is a commitment until graduation.
- Fine and performing arts programs include speech team, jazz ensemble, pep band, marching band, dance program, musical/theater production and student publications.
- The Guidance Department is active in hosting college visits from schools across the nation, supplying students with scholarship and college visit information.
- Parents support school programs through PTA, Fine and Performing Arts Boosters, Athletic Boosters and IB Parents Group.
- The JAG (Jobs for Americas Graduates) program is thriving and has a strong success rate for assisting and placing

students with jobs in the community after high school.

- The English Language Learner (ELL) program is offered to students for whom English is a new language.

**Extracurricular Activities**

- Student Council
- French Club
- Show Choir
- Key Club
- Marching Band
- Pep Band
- Project 7 (diversity & service)
- Dance
- Academic Team
- Frisbee Club
- Spanish Club
- All high school sports
- Jazz Ensemble
- Chess Club
- Philo Club
- Theatre

**Community Partnerships**

- Midwest America Federal Credit Union
- Ivy Tech
- PrimeTime Youth Center
- Purdue University Fort Wayne
- Latino Count
- Trine University



**WAYNE HIGH SCHOOL****JOHN HOUSER, PRINCIPAL**9100 Winchester Rd. • Fort Wayne, IN 46819  
260.467.6400**School Summary**

The Wayne community shares responsibility in providing a safe and caring environment that ensures students will be productive citizens who respect themselves and others, appreciate diversity, achieve academic excellence through rigorous coursework and demonstrate the skills necessary for lifelong learning. In collaboration with Discovery Education, Wayne is building a STEM (Science, Technology, Engineering and Math) culture that inspires and cultivates the next generation of problem-solvers, innovators and leaders. By providing meaningful, interactive opportunities for students to become engaged in these subject areas, Wayne will prepare students to be qualified and competitive candidates in the future economy and guide them towards the emerging careers of tomorrow.

**Program of Study**

Wayne offers two Programs of Study. The first is the New Tech Academy. New Tech Academy is a national demonstration site for its outstanding use of project-based learning. Students at New Tech are engaged and challenged daily as they are enrolled in integrated classes using new technologies. Students work in teams, completing rigorous, real-world assignments and projects that prepare them for college. All students are engaged in STEM activities to prepare them for the real world, including Project Lead the Way Biomedical and Engineering courses. Students learn in an innovative and professional environment, fostered by the use of advanced learning methods and technology.

Wayne is also home to an Early College Program, partnering with Ivy Tech to provide a rigorous business education program. With dual credit opportunities in business as well as a number of core courses like English, science and social studies, a Wayne student in the Early College program will be prepared to achieve success in the business world. Students begin earning college credits through Ivy Tech - for free - as early as their freshman year and build over the course of the four years toward a Technical Certificate in business administration. Some of the highlighted course work includes business law and ethics, business management, entrepreneurship and marketing. Wayne's Early College is located in the lower C-Hall and has created a college atmosphere and structure, complete with one-to-one technology and a student lounge for independent study and collaborative projects. There are currently 130 students in the Early College Program.

**College and Career Readiness**

- Wayne offers Advanced Placement classes in language and composition, literature, government, economics and calculus.
- Wayne offers dual credit classes in English composition,

English literature, pre-calculus, public speaking, chemistry, micro-computers, marketing, business management and business law. Additionally in New Tech, dual credit classes are offered in Project Lead the Way, such as introduction to engineering, principles of engineering, and Civil Engineering and Architecture.

- Wayne offers Purdue University Fort Wayne's Upward Bound, a year-round program consisting of a nine-month Academic Year Component and a six-week Summer Academy with a three week residential stay. The Academic Year Component includes academic counseling, academic instruction on Saturdays, weekly tutoring, college visits, cultural and social experiences and post-secondary assistance. During the Summer Academy, Upward Bound participants live on campus for three weeks and experience college life, take additional classes, and visit other colleges. This is a commitment until graduation.
- The Air Force Junior Reserve Officer Training Corps (JROTC) Program instills the values of citizenship, service to the community, personal responsibility and a sense of accomplishment.
- The JAG (Jobs for America's Graduates) program is thriving and has a strong success rate for assisting and placing students with jobs in the community after high school.

**Extracurricular Activities**

- |                      |                          |
|----------------------|--------------------------|
| • Marching Band      | • Jazz Band              |
| • Orchestra          | • Student Council        |
| • Plays and Musicals | • Chess Club             |
| • ROTC               | • Speech Team            |
| • Art Club           | • Campus Life            |
| • Robotics Club      | • All high school sports |

**Community Partnerships**

- |                                |                     |
|--------------------------------|---------------------|
| • BAE Systems                  | • Ivy Tech          |
| • Purdue University Fort Wayne | • New Tech Network  |
| • City Life                    | • Fort Wayne Metals |
| • Fort Wayne Dance Collective  |                     |



# DISTRICT PROGRAMS

## CHILDCARE SERVICES

All early childhood and elementary schools offer childcare services through the YMCA, but some schools do not offer them on-site. Please refer to the lists below or check with Student and Family Support Services to see where childcare is located for schools not offering services on-site.

The provider of FWCS extended childcare for the school year is the YMCA School-Age Childcare Program. In keeping with the YMCA mission, it values the lives of all children and works to enhance the quality of their experiences at every opportunity. The YMCA offers safe, challenging and fun programs for youth up to age 12 by giving them ways to explore their world beyond home and school. The YMCA School-Age Childcare Program sites offer many options to fit the needs of parents and children. *Program sites are subject to change due to insufficient enrollment at a specific location.*

Before-School and After-School Care Programs: Before-School Care: 6:30 a.m.-start of school day;

After-School Care: end of school day-6 p.m.

### Program Sites & Schools Served:

- **Arlington:** Arlington
- **Brentwood:** Brentwood
- **Bunche:** Bunche
- **Croninger:** Croninger
- **Forest Park:** Adams, Forest Park
- **Franke Park:** Bloomingdale, Franke Park
- **Glenwood Park:** Glenwood Park
- **Haley:** Haley
- **Harris:** Harris
- **Harrison Hill:** Fairfield, Harrison Hill, South Wayne
- **Holland:** Holland
- **Indian Village:** Indian Village
- **Irwin:** Irwin
- **Lincoln:** Lincoln
- **Lindley:** Lindley
- **Maplewood:** Maplewood, Waynedale
- **Northcrest:** Northcrest
- **Price:** Price
- **Shambaugh:** Shambaugh
- **St. Joseph Central:** St. Joseph Central
- **Towles:** Towles (after-school care only)
- **Washington:** Study, Washington
- **Washington Center:** Washington Center
- **Weisser Park:** Abbett, Scott, Weisser Park
- **Whitney Young:** Whitney Young

Pre-School Care Due to the many variations for our Pre-School Programs, please contact Ann Conroy at 449-8464 or Stacy Gilbert at 449-8266 to discuss your specific options.

All Pre-School students must be dually enrolled at a FWCS P-K program to be eligible to attend.

Morning Pre-School begins at the start of the school day. Afternoon Pre-School dismisses at the end of the school day.

### **Morning/ Afternoon Pre-School**

Harrison Hill .....Abbett, Bloomingdale, Fairfield, Harrison Hill, Indian Village, Lindley, Maplewood, Scott, South Wayne, Waynedale

Holland.....Brentwood, Franke Park, Forest Park, Holland, Northcrest, Washington

### **Afternoon Pre-School Only**

Bunche (P3's only) .....Bunche

Before & After care for Pre-K students is only available at Bunche, Harrison Hill, Holland and Whitney Young.

## SPECIAL EDUCATION

FWCS offers a full range of academic programs and support services to special needs students at school sites throughout the district. Special Education early childhood options are available for eligible children ages 3 to 5. Early childhood programs are offered at FWCS elementary schools and community/private preschool school sites.

Homebound instruction for students with injury or temporary illness is also offered through Special Education. Call 467-1110 for information on all aspects of Special Education, including eligibility, placement and early childhood programs.

## CONTINUING EDUCATION AND NEIGHBORHOOD CONNECTION

FWCS provides lifelong learning opportunities to all Allen County residents. Programs include academic classes, HSE (formerly known as GED) preparation, technology, electronics, business and computer classes, recreation and youth and family activities. Classes take place at the Bill C. Anthis Center, churches and FWCS sites throughout the city.

FWCS assists community members who are 16 years of age and older by offering high school credit and equivalency programs and adult vocational classes.

FWCS also works in partnership with many businesses and community-based organizations to provide educational services and classes for employees and residents. Courses in literacy, computers and specialized vocational training are available or can be developed. **For more information on enrollment and availability of classes, call 467-1060 or 467-1075.**



# LOTTERY APPLICATION

## COMPLETING A LOTTERY APPLICATION

We will begin accepting lottery applications on Monday, November 1, 2021 for our 2022-23 school year. This year applications will be taken through the online system only. No paper applications will be accepted. If you require assistance, please contact 260-467-2120 to schedule an appointment. To start your application, simply go to [myfwcs.fortwayneschools.org/esnap](http://myfwcs.fortwayneschools.org/esnap) on your computer or mobile device. On-time applications will receive priority placement over late applications.

To learn more about our schools and their offerings, please visit [www.fortwayneschools.org/showcase](http://www.fortwayneschools.org/showcase). You can view videos and go directly to each school's website. From strong magnet programs to outstanding neighborhood schools, you'll want to say Yes to FWCS!

## LIVING OUTSIDE OF FORT WAYNE COMMUNITY SCHOOLS BOUNDARIES

Students who live outside FWCS boundaries may attend FWCS schools, based on a school's space availability. A tuition payment may be required. Fees are set in August, and may vary from year to year due to changes in public school funding by the State of Indiana. FWCS has the authority (by law) to deny a request for transfer\* if the applicant has been suspended or expelled during the twelve-month period preceding the transfer application for the following reasons:

Suspension for ten (10) or more school days;

For a violation under I.C. 20-33-8-16 (firearms, deadly weapons or destructive devices);

For causing physical injury to a student, school employee or school visitor;

For a violation of a school's drug or alcohol rules; or

When the applicant is ineligible to enroll during a period of expulsion or proposed expulsion under I.C. 20-33-8-30.

\*This does not apply to any FWCS intra-district transfers (IDT).

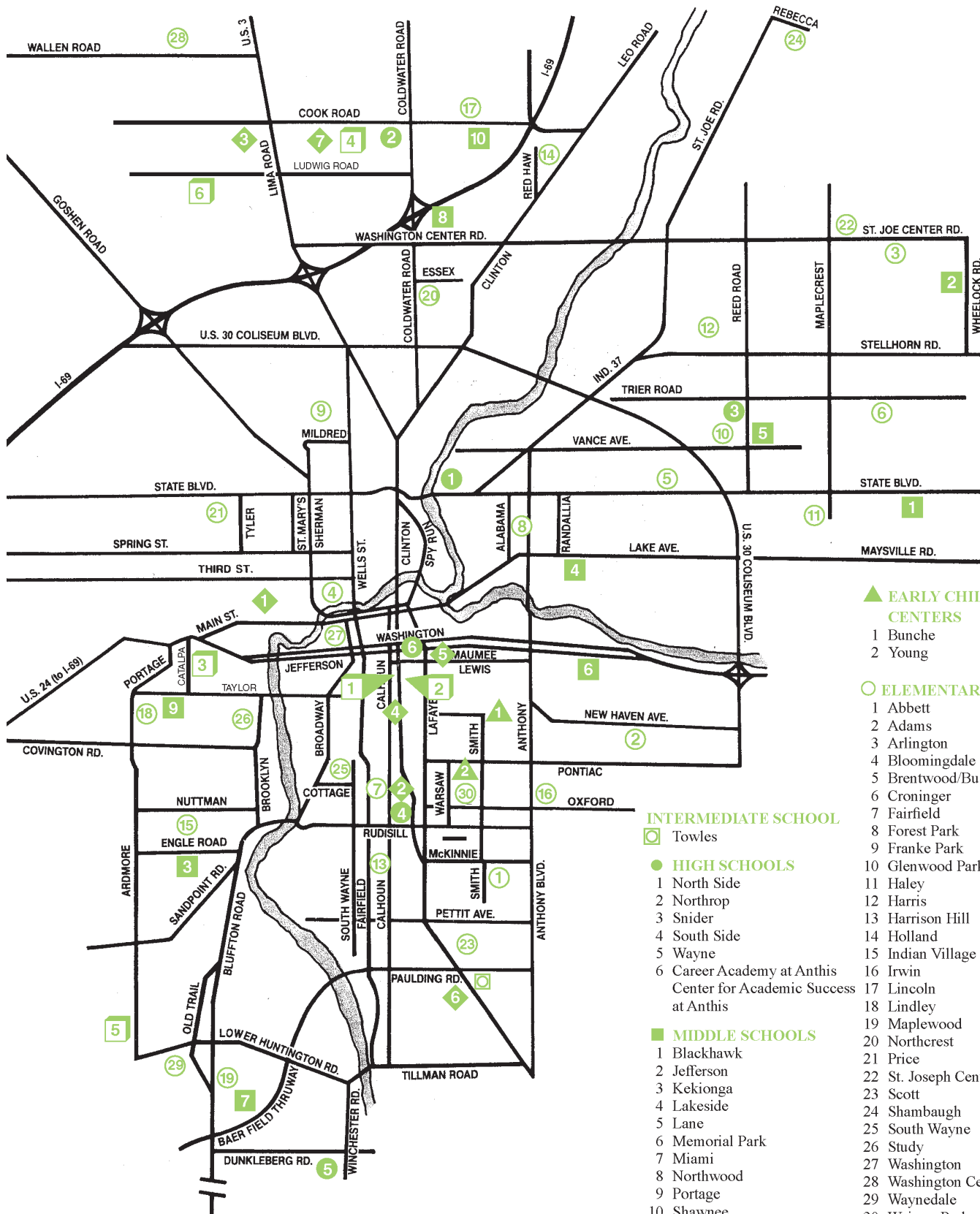
Any non-FWCS student residing outside of the district's boundaries petitioning for a transfer into FWCS must have all the following materials returned to Student and Family Support Services:

Completed Out-of-District Request of Records (Requesting for discipline records for the past 12 months)

Student and Family Support Services will be responsible for requesting and retrieving the applicant's records from the previous school. The Out-of-District applications will not be entered into the lottery until the discipline records have been reviewed.

*This page is intentionally left blank*

# SCHOOL LOCATIONS



## OTHER SCHOOLS & PROGRAMS

- 1 Center for Academic Success at Nebraska
- 2 Helen P. Brown Natatorium
- 3 Parkview Education Center
- 4 Construction Trades
- 5 Automotive Center
- 6 Public Safety Academy of Northeast Indiana
- 7 Smith Field Aviation Technology

## EARLY CHILDHOOD CENTERS

- 1 Bunche
- 2 Young

## ELEMENTARY SCHOOLS

- 1 Abbett
- 2 Adams
- 3 Arlington
- 4 Bloomingdale
- 5 Brentwood/Buschor
- 6 Croninger
- 7 Fairfield
- 8 Forest Park
- 9 Franke Park
- 10 Glenwood Park
- 11 Haley
- 12 Harris
- 13 Harrison Hill
- 14 Holland
- 15 Indian Village
- 16 Irwin
- 17 Lincoln
- 18 Lindley
- 19 Maplewood
- 20 Northcrest
- 21 Price
- 22 St. Joseph Central
- 23 Scott
- 24 Shambaugh
- 25 South Wayne
- 26 Study
- 27 Washington
- 28 Washington Center
- 29 Waynedale
- 30 Weissner Park

## INTERMEDIATE SCHOOL

- 1 Towles

## HIGH SCHOOLS

- 1 North Side
- 2 Northrop
- 3 Snider
- 4 South Side
- 5 Wayne
- 6 Career Academy at Anthis
- 7 Center for Academic Success at Anthis

## MIDDLE SCHOOLS

- 1 Blackhawk
- 2 Jefferson
- 3 Kekionga
- 4 Lakeside
- 5 Lane
- 6 Memorial Park
- 7 Miami
- 8 Northwood
- 9 Portage
- 10 Shawnee

## ADMINISTRATION/OPERATIONS

- 1 Grile Administration Center
- 2 Family and Community Engagment Center
- 3 Facilities/Printing Services/Media Services/Maintenance & Operations/Warehouse
- 4 Transportation North
- 5 Transportation South
- 6 Nutrition Services





WE ARE YOUR SCHOOLS

[www.fortwayneschools.org/showcase](http://www.fortwayneschools.org/showcase)