

# Redistricting Information

December 2022

**Brownsburg Community  
School Corporation**



# Redistricting Information

- In the spring of 2022, a call for volunteers to participate in the Redistricting Committee was placed in school newsletters.
- All who signed up to be part of the Redistricting Committee were invited to participate. The committee started with 121 parent volunteers. By the final redistricting meeting, we had 78 parents who voted. This included BCSC administrators who are parents of Brownsburg students in grades K – 8.
- On Monday, December 12, the Brownsburg School Board voted to approve the Redistricting Plan created by the Redistricting Committee.




# Redistricting Information

- Parents of all students in kindergarten through 7<sup>th</sup> grade will receive a letter in January with their student's school placement for 2023-2024. Even families who are staying at the same school will receive a letter.
- Students entering 5<sup>th</sup> grade or 8<sup>th</sup> grade who have been redistricted will be allowed to remain at their current school. Parents will be responsible for providing transportation to and from school each day. Younger siblings will need to attend their new school based on the redistricting plan.
- The following slides provide information about what neighborhoods and areas have been redistricted.



## Plan Name: **N2-1A “AS IS” GREEN**

These neighborhoods have been redistricted at the Elementary Level: 

Understand: Small neighborhoods (<9 students) and County Road students that don't live in a neighborhood MAY be redistricted as well. Those decisions will be based on bus routing developed to serve the larger neighborhoods listed. Those decisions haven't been made yet.

The feeder pattern to the middle schools was also adjusted: 

East Middle School	West Middle School
Crossroads Elementary *Change*	Brown Elementary
Delaware Trail Elementary	Cardinal Elementary
Reagan Elementary	White Lick Elementary
Lincoln Elementary	Eagle Elementary *Change*

Control	Area on Master List	Elementary Assigned
B01	Sonora NW	Crossroads Elementary
B02	Brownsburg Crossing Apts	Crossroads Elementary
B03	Sonora East	Crossroads Elementary
B07	Sonora SW	Crossroads Elementary
B09	Lake Ridge East	Crossroads Elementary
B14*	North 1 - NorthWest	Brown Elementary
C03	Highland Springs West	Lincoln Elementary
C04	Murphy Meadows	Crossroads Elementary
D05	Northridge	Crossroads Elementary
D15	Fountains of Northridge	Crossroads Elementary
D19	Meadow Chase	Crossroads Elementary
L08	Belle Arbor	Cardinal Elementary
L16	Beacon Point	Crossroads Elementary
R11	Creekside Commons East	Crossroads Elementary
W10	Cadence	Reagan Elementary
W14*	North 1 - NorthEast	Crossroads Elementary

\*Note: The northern tier of the Brownsburg School boundaries has been consolidated into 2 areas.

“(B14) North 1 – NorthWest” is described in detail on the “North Tier Plan” slide. It includes the area north of E CR 800 N and west of SR 267. This entire area will go to Brown ES & West Middle School.

“(W14) North 1 – NorthEast” is described in detail on the “North Tier Plan” slide. It includes the area north of E CR 750 N and east of SR 267. This entire area will go to Crossroads ES & East Middle School.

# Sonora

- Due to its size, Sonora was divided into 3 separate pieces for the purpose of redistricting.
- The selected plan moved all 3 sections to Crossroads Elementary.
- The entire Sonora neighborhood will attend Crossroads Elementary beginning with the 2023-2024 school year.
- Middle School students living in Sonora will attend East Middle School beginning with the 2023-2024 school year.



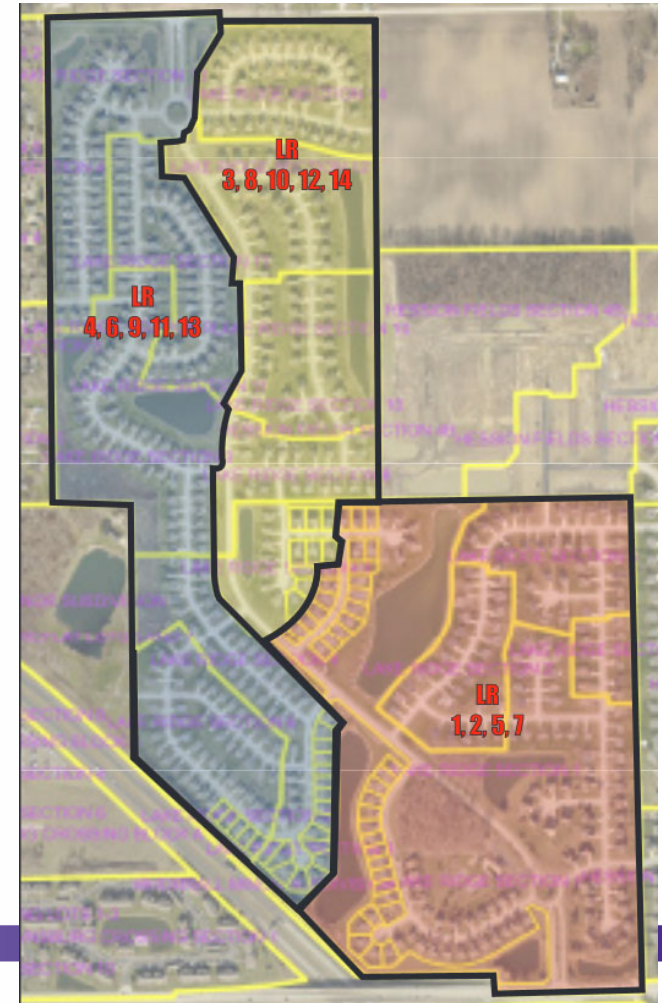
# Brownsburg Crossing Apartments

- Brownsburg Crossing Apartments which previously attended Brown Elementary and West Middle School will attend Crossroads Elementary and East Middle School beginning with the 2023-2024 school year.



# Lake Ridge East

- Lake Ridge East that previously attended Brown Elementary and West Middle School will attend Crossroads Elementary and East Middle School beginning with the 2023-2024 school year.
- In the picture to the right, Lake Ridge East is orange and is made up of builder sections 1, 2, 5, and 7.



# North 1 – NorthWest

- This section consists of neighborhoods and county roads from E CR 800 N (including Eaker Court) and north to the county line. It currently has students attending both Brown Elementary and Lincoln Elementary.
- All students in this area will attend Brown Elementary and West Middle School.
- While this is not a change for those students already attending Brown Elementary, it does impact those students who live in that section who do not currently attend Brown Elementary.
- Please see next slide for a map of this area. It is the green area shown.





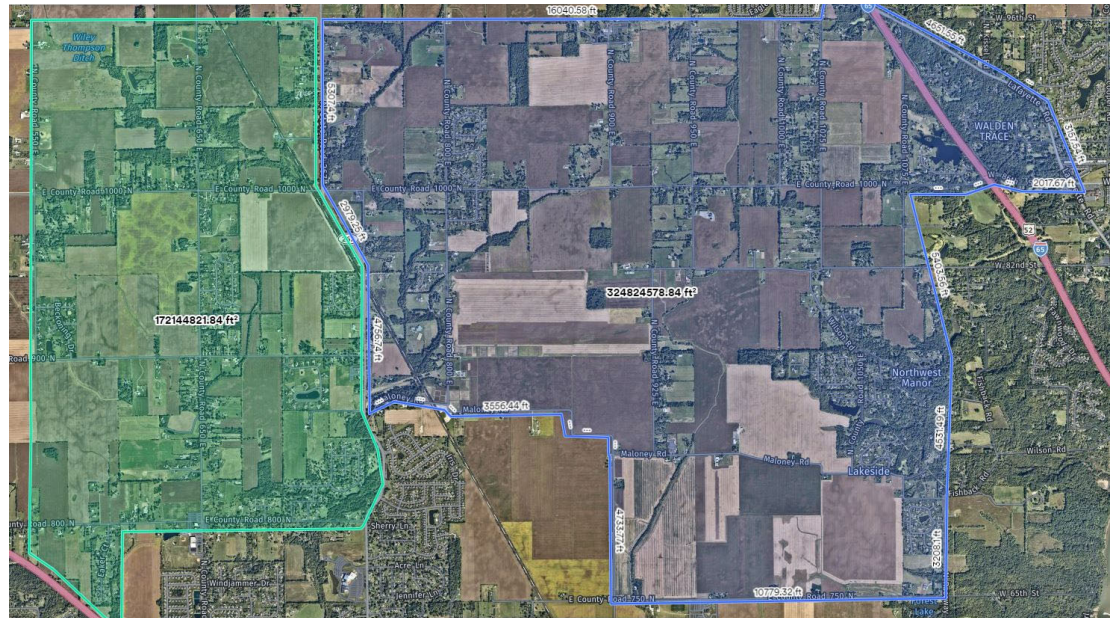
## North Tier Plan

The committee split the north territory into two parts. This area currently serves 4 different elementary schools, but for transportation time and cost purposes, we sought to consolidate this territory into two schools. We called these two new areas:

- “North 1: NorthWest”: This is the green area mostly north of E CR 800 N. It currently predominantly serves Brown and a little bit Lincoln. We called this area **B14**.
- “North 1: NorthEast”: This is the blue area north of North of E CR 750 N. It currently predominantly serves White Lick and a little bit Reagan & Lincoln. We called this area **W14**.

The East/West dividing line between blue and green is SR 267.

This slide is repeated later in this document to provide information about the blue section.



# Highland Springs West

- Highland Springs West that previously attended Cardinal Elementary and West Middle School will attend Lincoln Elementary and East Middle School beginning with the 2023-2024 school year.
- In the picture to the right, Highland Springs West is blue and is made up of builder sections 1 and 2b.



# Murphy Meadows

- Murphy Meadows which previously attended Cardinal Elementary and West Middle School will attend Crossroads Elementary and East Middle School beginning with the 2023-2024 school year.



# Northridge and the Fountains of Northridge

- Northridge and the Fountains of Northridge which previously attended Delaware Trail Elementary and East Middle School will attend Crossroads Elementary and East Middle School beginning with the 2023-2024 school year.



# Meadow Chase

- Meadow Chase which previously attended Delaware Trail Elementary and East Middle School will attend Crossroads Elementary and East Middle School beginning with the 2023-2024 school year.
- Meadow Chase is a walking neighborhood for both elementary and middle school.



# Belle Arbor

- Belle Arbor which previously attended Lincoln Elementary and East Middle School will attend Cardinal Elementary and West Middle School beginning with the 2023-2024 school year.



# Beacon Point

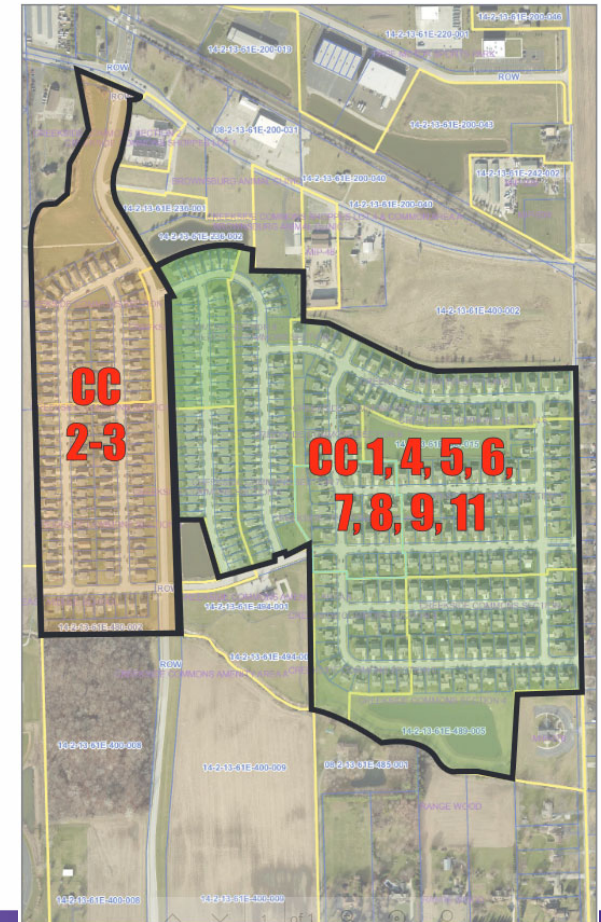
- Beacon Point which previously attended Lincoln Elementary and East Middle School will attend Crossroads Elementary and East Middle School beginning with the 2023-2024 school year.
- Beacon Point is a walking neighborhood for both elementary and middle school.





# Creekside Commons East

- Creekside Commons East which previously attended Reagan Elementary and East Middle School will attend Crossroads Elementary and East Middle School beginning with the 2023-2024 school year.
- In the picture to the right, Creekside Commons East is green and is made up of builder sections 1, 4, 5, 6, 7, 8, 9, and 11.
- Creekside Commons East is a walking neighborhood for both elementary and middle school.





# Cadence

- Cadence which previously attended White Lick Elementary and West Middle School will attend Reagan Elementary and East Middle School beginning with the 2023-2024 school year.



# North 1 - NorthEast

- This section consists of neighborhoods and county roads mostly north of E CR 750 N. It currently serves predominantly White Lick Elementary and smaller numbers of students from Reagan and Lincoln Elementary.
- All students in this area will attend Crossroads Elementary and East Middle School.
- Please see next slide for a map of this area. It is the blue area shown.



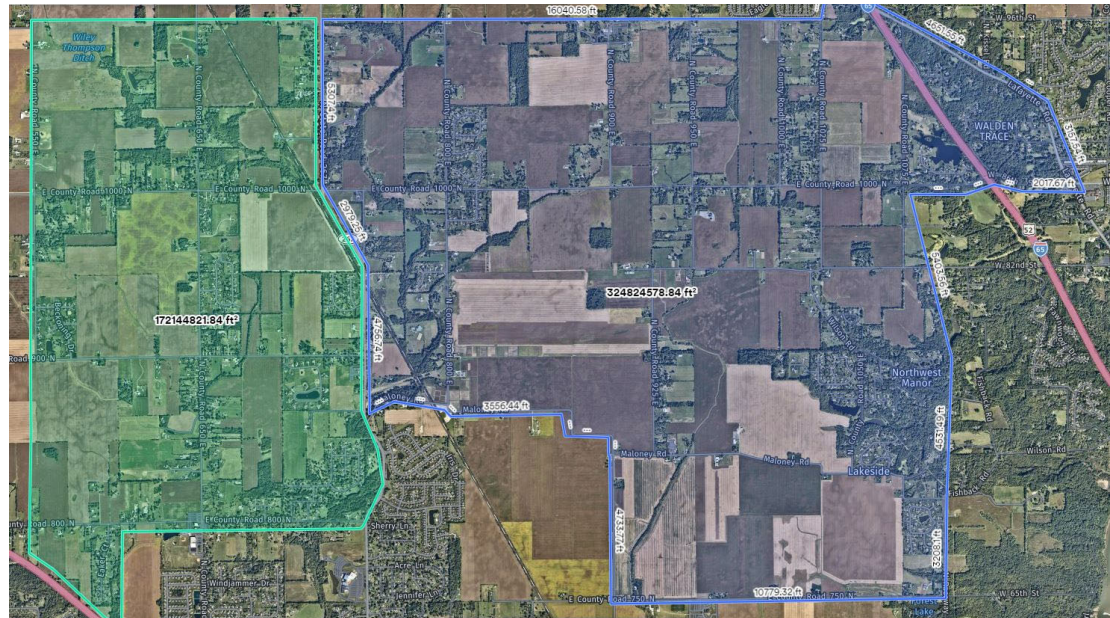
## North Tier Plan

The committee split the north territory into two parts. This area currently serves 4 different elementary schools, but for transportation time and cost purposes, we sought to consolidate this territory into two schools. We called these two new areas:

- “North 1: NorthWest”: This is the green area mostly north of E CR 800 N. It currently predominantly serves Brown and a little bit Lincoln. We called this area **B14**.
- “North 1: NorthEast”: This is the blue area north of North of E CR 750 N. It currently predominantly serves White Lick and a little bit Reagan & Lincoln. We called this area **W14**.

The East/West dividing line between blue and green is SR 267.

This slide is repeated earlier in this document to provide information about the green section.



# County Roads and Small Neighborhoods

- Homes on county roads and neighborhoods made up of 9 or fewer students will be considered for redistricting as bus routes are developed.
- All students, including those living in small neighborhoods or county roads, will know their school placement when letters are mailed in January.



# Middle School Feeder Plan

- Beginning with the 2023-2024, the elementary to middle school feeder plan will be:

East Middle School	West Middle School
Crossroads Elementary	Brown Elementary
Delaware Trail Elementary	Cardinal Elementary
Lincoln Elementary	Eagle Elementary
Reagan Elementary	White Lick Elementary



# Timeline

- ✓ **May 2022** – Invitation in newsletters to participate in Redistricting Committee
- ✓ **September 1, 2022** – Redistricting Meeting #1
- ✓ **September 29, 2022** – Redistricting Meeting #2
- ✓ **October 27, 2022** – Redistricting Meeting #3
- ✓ **November 17, 2022** – Redistricting Meeting #4
- ✓ **November 28, 2022** – Redistricting Community Update
- ✓ **December 8, 2022** – Redistricting Meeting #5
- ✓ **December 12, 2022** – Recommendation for Board Approval

- **January 20, 2023** – Parent Notification
- **February 10, 2023** – Parents of 5<sup>th</sup> and 8<sup>th</sup> grade student commitments due
- **March 17, 2023** – Teacher placement notification

