

Redistricting Committee Meeting

December 8, 2022

**Brownsburg Community
School Corporation**



Agenda

- Welcome
- Table Introductions
- November Community Meeting
- Review of Previous Meetings
- Discussion of Remaining Scenarios
- Elimination of Scenarios
- Middle School Feeder Discussion and Elimination
- Selection of Final Plan



Table Introductions

- The team of parents and teachers as parents at each group will stay the same for the remainder of the meetings.
- The administrator(s) facilitating the group will change each time the committee meets. This change will allow committee members to meet different leaders from across the district.
- Please share your name, the grade(s) and school(s) your child(ren) attend.



November Community Meeting

- Community Meeting was held on 11/28.
- Approximately 20 people were in attendance.
 - Several Redistricting Committee members!
- Questions about the process, high ability, growing neighborhoods, and middle school feeder pattern.



Decisions Made 9/29

- The Northern Tier Option 1 was chosen which results in 2 sections.
 - This will result in a savings of \$195,000 per year.
- Creekside Commons East, Beacon Point, and Meadow Chase will all attend Crossroads Elementary.
 - Creekside Commons East and Beacon Point will eliminate the need for an elementary bus resulting in a savings of \$65,000 per year.
- Crossroads Elementary will feed into East Middle School.
 - This decision eliminates a new cost that would have been incurred if buses were needed for the walking neighborhoods.
- No decision has been made about which current East Middle School feeder will move to West Middle School.
- Tiny neighborhoods of 9 or fewer students will not be moved by this committee. The Transportation Department will make recommendations for placement based on surrounding areas and bus routes.
 - This decision has the potential to save bus routes since these neighborhoods can be scooped by a bus that is already in the area.



Scenarios

- At the September 29th meeting, scenarios were created. Additionally, scenarios from committee members were submitted. The group and individual scenarios were collected and run through a database to determine the impact of the moves on poverty and diversity rates.
- At the October and November meetings, scenarios were considered. Some scenarios were eliminated, and some were kept.



Remaining Scenarios + One More

- When we ended the November meeting, there were 3 scenarios left. We discussed high ability and the financial impact of imbalanced high ability classes.
 - Some concerns were voiced that HA movement had not been discussed in previous meetings and this took some by surprise.
- After the meeting, one committee member shared she had submitted a plan at the end of October and did not see it in the pile of scenarios.
 - Upon investigation the next day, the plan was received but had not been run. When it was run, it was green (met the parameters) for every category. That plan is included today and is called: Table 19 Missed Plan



Here's where we stand:

- There are 4 surviving Core Plans made by the committee.
 - A Core Plan means that no changes have been made to what was submitted (the only change would be the move of D17 back to Delaware Trail as voted by the committee in November).
- Each Core Plan can be left alone, but we've attempted to offer 2 minor tweaks (A & B) that address high ability imbalances.
- That means the 4 plans can be thought of as 12 plans.
- If we add in the feeder pattern question right now, each of those plans can affect the feeder pattern 1 of 3 ways:
 - Delaware Trail to West Middle School
 - Eagle to West Middle School
 - Lincoln to West Middle School
- So, the 12 plans can be thought of as 36 plans.
- We are going to start with the 12 plans and reduce those plans to 2. At that point, we will look at the middle school options.



Here's a CORE plan :

We already know how to review all of this.

Size					Low SES				Diversity				
School	Size Goal	Plan Size	Size Diff	Size Check	Low SES Goal	Plan Low SES	Low SES Diff	Low SES Check	Diversity Goal	Plan Diversity	Diversity Diff	Diversity Check	
Brown Elementary	580	580	0	About Right	31.14%	28.6%	-2.5%	Inside Range	No wider than the current gap of 17.28%.	33.1%	-2.6%	Inside Range	
Cardinal Elementary	520	508	-12	About Right	31.14%	33.3%	2.1%	Inside Range		33.1%	-4.6%	Inside Range	
Crossroads	580	580	0	About Right	31.14%	33.4%	2.3%	Inside Range		37.8%	2.1%	Inside Range	
Delaware Trail Elementary	520	513	-7	About Right	31.14%	30.8%	-0.3%	Inside Range		33.1%	-2.5%	Inside Range	
Eagle Elementary	580	582	2	About Right	31.14%	26.1%	-5.0%	Outside Range		31.4%	-4.2%	Inside Range	
Lincoln Elementary	580	589	9	About Right	31.14%	31.7%	0.6%	Inside Range		39.7%	4.1%	Inside Range	
Reagan Elementary	520	531	11	About Right	31.14%	34.5%	3.3%	Outside Range		39.5%	3.9%	Inside Range	
White Lick Elementary	520	518	-2	About Right	31.14%	31.3%	0.1%	Inside Range		39.4%	3.7%	Inside Range	
Green= +/-20					Green= +/-1.5%					Average	35.67%		
Plan Name:									Max	39.7%			
C:\Users\scottsmith\Desktop\Redistricting December Meeting\Core Plans\Phase 2 Group Scenario N2-1A.xlsx>Data Run									Min	31.1%			
Tag	Yes	-X		Seq#					GAP	8.6%		GAP Narrow	
					102,030,709					Green= +/-17.28%	Green= +/-8.64%		
Count of K-Enrollment	Column Labels												
	Cardinal	Crossroads											
Row Labels	Elementary	Elementary	Lincoln Eleme	Reagan Eleme	Grand Total								
B01		1			1								
B02		1			1								
B03		1			1								
B07		1			1								
B09		1			1								
C03			1		1								
C04		1			1								
D05		1			1								
D15		1			1								
D19		1			1								
L08	1				1								
L16		1			1								
R11		1			1								
W10				1	1								
W14		1			1								
Grand Total	1	12	1	1	15								
This is the Base Plan without HA modifications.													
HA Changes: None													
*Half the 2/3 Range is: 7-15													
**The 4/5 Range is: 16-30 2 Aides													
Trans: Elimination of 1 route, no islands													
*The existing 2nd graders form half of the new 2/3.													
**The existing 3rd and 4th graders form the new 4/5.													
Core Plan													
N2-1A.xlsx>Data Run													

Here's HA Option A of that Core plan:

	Size				Low SES				Diversity			
School	Size Goal	Plan Size	Size Diff	Size Check	Low SES Goal	Plan Low SES	Low SES Diff	Low SES Check	Diversity Goal	Plan Diversity	Diversity Diff	Diversity Check
Brown Elementary	580	576	-4	About Right	31.14%	30.7%	-0.4%	Inside Range	No wider than the current gap of 17.28%.	35.6%	-0.1%	Inside Range
Cardinal Elementary	520	508	-12	About Right	31.14%	33.3%	2.1%	Inside Range		31.1%	-4.6%	Inside Range
Crossroads	580	584	4	About Right	31.14%	31.3%	0.2%	Inside Range		35.3%	-0.4%	Inside Range
Delaware Trail Elementary	520	513	-7	About Right	31.14%	30.8%	-0.3%	Inside Range		33.1%	-2.5%	Inside Range
Eagle Elementary	580	582	2	About Right	31.14%	27.3%	-3.8%	Outside Range		32.0%	-3.7%	Inside Range
Lincoln Elementary	580	589	9	About Right	31.14%	30.6%	-0.6%	Inside Range		39.2%	3.5%	Inside Range
Reagan Elementary	520	531	11	About Right	31.14%	34.5%	3.3%	Outside Range		39.5%	3.9%	Inside Range
White Lick Elementary	520	518	-2	About Right	31.14%	31.3%	0.1%	Inside Range		39.4%	3.7%	Inside Range
Green=			+/-20		Green=			+/-3%		Average	35.67%	
Plan Name:										Max	39.5%	
C:\Users\scottsmith\Desktop\Redistricting December Meeting\HA Alternatives\[Phase 2 Group Scenario N2-1A HA Option A.xlsx]Data Run										Min	31.1%	
Tag	Yes			Seq#						GAP	8.4%	GAP Name:
			102,030,709									
Count of K-5 Enrollment	Column Lat											
		Cardinal	Crossroads									
Row Labels		Brown Elemer Elementary	Elementary	Eagle Element Lincoln Eleme Reagan Eleme Grand Total						This is the Base Plan without HA modifications.		
B01			1				1				HA Changes:	
B02			1				1				E01 Lincoln	
B03			1				1				L15 Eagle	
B07			1				1				B09 Brown	
B09	1						1				B12 Crossroads	
B12			1				1					
C03					1		1					
C04			1				1					
D05			1				1					
D15			1				1					
D19			1				1					
E01						1	1				*Half the 2/3 Range is: 6-16 None	
L08		1					1				*The 4/5 Range is: 20-26 None	
L15				1			1				Trans: Too many islands, additional routes needed	
L16			1				1					
R11			1				1					
W10							1				*The existing 2nd graders form half of the new 2/3.	
W14			1				1				*The existing 3rd and 4th graders form the new 4/5.	
Grand Total	1	1	12	1	2	1	18					
HA Option												
N2-1A HA Option A.xlsx]Data Run												

Since this is a HA Option plan, we tell you what we changed.

Those changes attempted to positively impact the HA imbalance.

You know this a HA Option because it says so right here.

Here's HA Option B of that Core plan:

	Size				Low SES				Diversity			
	Size Goal	Plan Size	Size Diff	Size Check	Low SES Goal	Plan Low SES	Low SES Diff	Low SES Check	Diversity Goal	Plan Diversity	Diversity Diff	Diversity Check
School												
Brown Elementary	580	584	4	About Right	31.14%	28.1%	-3.1%	Outside Range	No wider than the current gap of 17.28%.	35.3%	-0.4%	Inside Range
Cardinal Elementary	520	508	-12	About Right	31.14%	33.3%	2.1%	Inside Range		31.1%	-4.6%	Inside Range
Crossroads	580	586	6	About Right	31.14%	33.4%	2.3%	Inside Range		37.5%	1.9%	Inside Range
Delaware Trail Elementary	520	513	-7	About Right	31.14%	30.8%	-0.3%	Inside Range		33.1%	-2.5%	Inside Range
Eagle Elementary	580	578	-2	About Right	31.14%	26.6%	-4.5%	Outside Range		29.2%	-6.4%	Inside Range
Lincoln Elementary	580	583	3	About Right	31.14%	31.7%	0.6%	Inside Range		40.0%	4.3%	Inside Range
Reagan Elementary	520	531	11	About Right	31.14%	34.5%	3.3%	Outside Range		39.5%	3.9%	Inside Range
White Lick Elementary	520	518	-2	About Right	31.14%	31.3%	0.1%	Inside Range	39.4%	3.7%	Inside Range	
		Green=				Green=			Average	35.67%		
Plan Name:		+/-20				+/-3%			Max	40.0%		
C:\Users\scottsmith\Desktop\Redistricting December Meeting\HA Alternatives\[Phase 2 Group Scenorio N2-1A HA Option B.xlsx]Data Run												
Tag	Yes			Seq#					Min	29.2%		
				102,030,708					GAP	10.7%		GAP narrowing
										Green=	Green=	
										+/-17.28%	+/-8.64%	
Count of K-5Enrollment	Column Label											
Row Labels	Brown Elemer Elementary	Cardinal Elementary	Crossroads Elementary	Eagle Element	Lincoln Eleme	Reagan Eleme	Grand Total					
B01			1				1					
B02			1				1					
B03			1				1					
B07			1				1					
B08				1			1					
B09					1		1					
C03					1		1					
C04			1				1					
D05			1				1					
D15			1				1					
D19			1				1					
E05	1						1					
L08		1					1					
L12			1				1					
L16			1				1					
R11			1				1					
W10						1	1					
W14			1				1					
Grand Total	1	1	12	1	2	1	18					

This is the Base Plan without HA modifications.

HA Changes:

B09	Lincoln		
L12	Crossroads		
B08	Eagle		
E05	Brown		

**Half the 2/3 Range is: 7-14 None

**The 4/5 Range is: 21-26 None

Trans: No change in routes, no islands

**The existing 2nd graders form half of the new 2/3.

**The existing 3rd and 4th graders form the new 4/5.

HA Option

N2-1A HA Option B.xlsx]Data Run

These are different possible moves.

With a possibly different impact.

- You know this a HA Option because it says so right here.

Here's one way to consider the plans:

Compare the HA imbalance impact.

And decide if it's "worth it" given the size, diversity, and SES impact.

School	Size			Low SES			Diversity		
	Size Goal	Plan Size	Size Diff	Low SES Goal	Plan Low SES	Low SES Diff	Diversity Goal	Plan Diversity	Diversity Diff
Brown Elementary	580	580	0	31.14%	28.6%	-2.5%	33.3%	2.6%	inside range
Cardinal Elementary	520	508	-12	31.14%	33.3%	2.1%	33.3%	-4.6%	inside range
Crossroads	580	580	0	31.14%	31.4%	0.2%	37.8%	2.1%	inside range
Delaware Trail Elementary	520	513	-7	31.14%	30.8%	-0.3%	33.3%	-2.5%	inside range
Eagle Elementary	580	582	2	31.14%	31.7%	0.6%	33.3%	4.2%	inside range
Lincoln Elementary	580	589	9	31.14%	31.7%	0.6%	33.3%	4.1%	inside range
Regan Elementary	520	531	11	31.14%	34.5%	3.4%	33.3%	3.3%	inside range
White Lick Elementary	520	518	-2	31.14%	31.3%	-0.1%	33.3%	9.7%	inside range
Average							35.6%		
Min							28.7%		
Max							31.3%		
GAP							6.9%		

Plan Name: C:\Users\jcozsmith\Desktop\Redistricting December Meeting\HA Alternatives\Phase 2 Group Scenario N2-1A HA Option A.xlsx\Master Area List P...
Tag: Yes .T
Count of K-Schoolment: 102,030,709
Count of K-Schoolment: 102,030,709
Row Labels: Cardinal, Crossroads, Eagle, Lincoln, Regan, White Lick, Grand Total
Grand Total: 1, 12, 1, 1, 16

Core Plan

School	Size			Low SES			Diversity		
	Size Goal	Plan Size	Size Diff	Low SES Goal	Plan Low SES	Low SES Diff	Diversity Goal	Plan Diversity	Diversity Diff
Brown Elementary	580	576	-4	31.14%	30.7%	-0.4%	33.3%	0.4%	inside range
Cardinal Elementary	520	508	-12	31.14%	33.3%	2.1%	33.3%	-4.6%	inside range
Crossroads	580	584	4	31.14%	31.3%	0.2%	37.8%	1.9%	inside range
Delaware Trail Elementary	520	513	-7	31.14%	30.8%	-0.3%	33.3%	-2.5%	inside range
Eagle Elementary	580	582	2	31.14%	31.7%	0.6%	33.3%	4.2%	inside range
Lincoln Elementary	580	589	9	31.14%	31.7%	0.6%	33.3%	4.1%	inside range
Regan Elementary	520	531	11	31.14%	34.5%	3.4%	33.3%	3.3%	inside range
White Lick Elementary	520	518	-2	31.14%	31.3%	-0.1%	33.3%	9.7%	inside range
Average							35.6%		
Min							28.7%		
Max							31.3%		
GAP							6.9%		

Plan Name: C:\Users\jcozsmith\Desktop\Redistricting December Meeting\HA Alternatives\Phase 2 Group Scenario N2-1A HA Option A.xlsx\Master Area List P...
Tag: Yes .T
Count of K-Schoolment: 102,030,709
Count of K-Schoolment: 102,030,709
Row Labels: Cardinal, Crossroads, Eagle, Lincoln, Regan, White Lick, Grand Total
Grand Total: 1, 1, 12, 1, 2, 1, 18

HA Option

School	Size			Low SES			Diversity		
	Size Goal	Plan Size	Size Diff	Low SES Goal	Plan Low SES	Low SES Diff	Diversity Goal	Plan Diversity	Diversity Diff
Brown Elementary	580	584	4	31.14%	30.7%	-0.4%	33.3%	0.4%	inside range
Cardinal Elementary	520	508	-12	31.14%	33.3%	2.1%	33.3%	-4.6%	inside range
Crossroads	580	586	6	31.14%	31.4%	0.2%	37.8%	1.9%	inside range
Delaware Trail Elementary	520	513	-7	31.14%	30.8%	-0.3%	33.3%	-2.5%	inside range
Eagle Elementary	580	578	-2	31.14%	26.8%	-4.5%	33.3%	-6.4%	inside range
Lincoln Elementary	580	580	0	31.14%	31.7%	0.6%	33.3%	4.1%	inside range
Regan Elementary	520	535	15	31.14%	34.5%	3.4%	33.3%	3.3%	inside range
White Lick Elementary	520	518	-2	31.14%	31.3%	-0.1%	33.3%	9.7%	inside range
Average							35.6%		
Min							28.7%		
Max							31.3%		
GAP							6.9%		

Plan Name: C:\Users\jcozsmith\Desktop\Redistricting December Meeting\HA Alternatives\Phase 2 Group Scenario N2-1A HA Option B.xlsx\Master Area List P...
Tag: Yes .T
Count of K-Schoolment: 102,030,709
Count of K-Schoolment: 102,030,709
Row Labels: Cardinal, Crossroads, Eagle, Lincoln, Regan, White Lick, Grand Total
Grand Total: 1, 1, 12, 1, 2, 1, 18

HA Option

Elimination of Scenarios

- We currently have 12 elementary scenarios.
- Our goal is to reduce the scenarios to the top 2 scenarios. We will then consider the middle school feeder options.
- Chart paper
 - Pros and Cons
- Eliminate
- Discuss
- Eliminate



Middle School Explanation of Plans

Plan Name: N2-1A AS IS BLUE.xlsx]Data Run								
	Diversity	Poverty	Total Population					
Brownsburg East Middle School								
Count	472	415	1273					
Percentage	37.1%	32.60%						
Brownsburg West Middle School								
Count	391	410	1128					
Percentage	34.7%	36.35%						
Total Count								
	863	825	2401					
Total Percentage								
	35.9%	34.36%						
Variation:								
	2.41%	3.75%	145					
Trans:				Swapping buses between EMS and WMS, no additional bus routes				



Feeder Pattern Discussion

- For the remaining scenarios, consider the three feeder pattern options for each.
- Consider (in this order of importance):
 - Transportation
 - Islands
 - Added routes, reduction of routes
 - SES (Poverty)
 - Diversity
 - Enrollment Size - A difference of 100 students is about 33 per grade level. This would be an acceptable difference. More than that might be cause for concern.



Final Decision

- 6 plans:
 - 2 elementary plans x 3 middle school feeder pattern changes
- Chart paper
 - Pros and Cons
- Eliminate
- Discuss
- Eliminate
- When we get to the final 2 – 3 plans, we will then vote on the final plan.



North Tier Plan

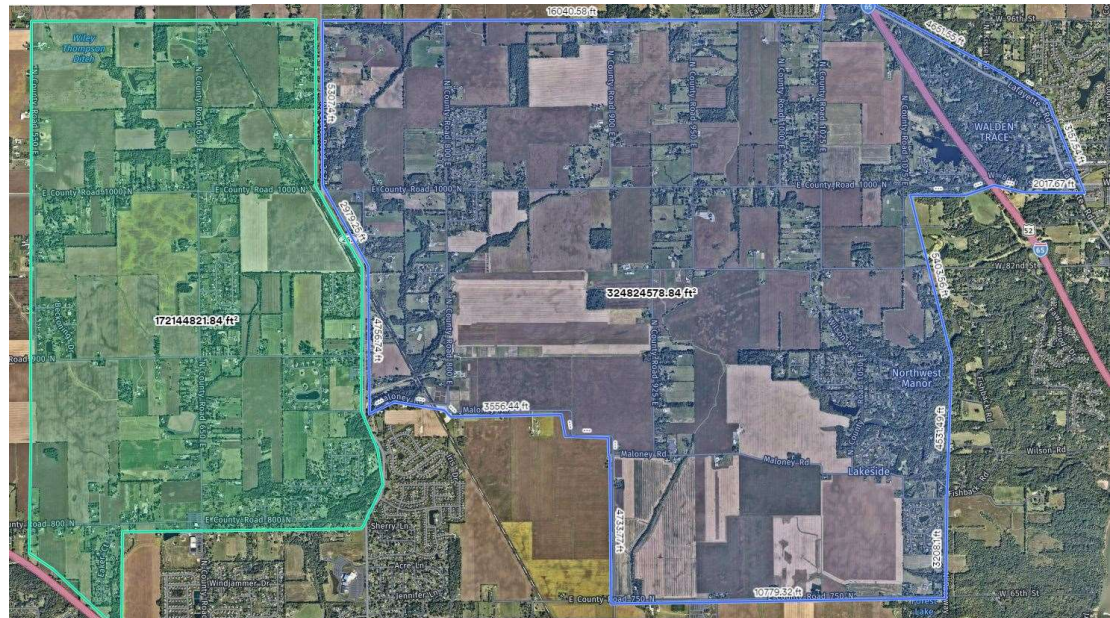
The committee split the north territory into two parts. This area currently serves 4 different elementary schools, but for transportation time and cost purposes, we sought to consolidate this territory into two schools. We called these two new areas:

- “North 1: North West”: This is the green area mostly north of E CR 800 N. It currently predominantly serves Brown and a little bit Lincoln. We called this area **B14**.
- “North 1: North East”: This is the blue area north of North of E CR 750 N. It currently predominantly serves White Lick and a little bit Reagan & Lincoln. We called this area **W14**.

The East/West dividing line between blue and green is SR 267.

Note: Areas **B14** and **W14** were “moveable pieces” in the redistricting. So, if you live in these areas, you need to look for:

- “North 1: North West” (**B14**)
- “North 1: North East” (**W14**)



Understand: On the next slide, where we reveal what got moved, area B14 and W14 are shown...even if the committee didn't use those pieces in the plan.

B14 WAS/IS predominately Brown, and we treated it like a Brown neighborhood. But there are some Lincoln kids that live there too...and all of those kids need to know where they go to school next year.

- So, if the plan **DOES NOT USE** B14, it's on the reveal list and says Brown.
- And if the plan **DOES USE** B14, it's on the reveal list and says the new school.

W14 WAS/IS predominately White Lick, and we treated it like a White Lick neighborhood. But there are some Reagan & Lincoln kids that live there too...and all of those kids need to know where they go to school next year.

- So, if the plan **DOES NOT USE** W14, it's on the reveal list and says White Lick.
- And if the plan **DOES** USE W14, it's on the reveal list and says the new school.

Final Plan – Things to Know

- If you are going to share the recommendation of the committee on social media, please be aware of the following:
 - The information you post is going to be the recommendation that goes to the School Board on Monday. Since the plan has not been approved, we (Brownsburg Community School Corporation) will not post any of this information on our website or be able to answer any questions about redistricting until after the Board has taken action.
 - If there are any split neighborhoods being moved, people living in those neighborhoods will not know what part of the neighborhood has been moved.
 - The northern tier was divided into two sections and were made part of the school where most students attended. However, the two pieces include students from more than that one school.
 - County road homes and neighborhoods of 9 or fewer students may be moved based on transportation needs. That won't be reflected in the shared plan.



Final Plan Unveiling

- Scenario *** moves the following neighborhoods:
- The new middle school feeder pattern is:

No scenario was shared in this PowerPoint as it was developed before the committee selected a final plan.

This is the plan will be recommended to the School Board for approval on Monday, December 12th.



Committee Member Responsibilities

- When asked about the work of the Committee by neighbors, other parents, people at the ball fields – be honest! Let them know about the work of the group.
- When you hear people talking about redistricting and they are sharing incorrect information, let them know what you know.
- If you have gained new knowledge tonight that others will find interesting... share it!



If you have questions, ask!

Jim Snapp

jsnapp@brownsburg.k12.in.us

317-852-5726 (work)

317-509-5753 (cell)

Kat Jessup

kjessup@brownsburg.k12.in.us

317-852-5726 (work)

317-441-5711 (cell)



Meeting Dates and Topics

- ✓ Thursday, September 1– Introductions and Information (make up on 9/6)
- ✓ Thursday, September 29 – Northern Tier, Walking, and Scenarios
- ✓ Thursday, October 27 – Numbers and Problem Solving
- ✓ Thursday, November 17 – Problem Solving
- ✓ Monday, November 28 – Community Meeting
- ✓ Thursday, December 8 – Problem Solving or Finalizing Recommendation for the School Board
- Monday, December 12 – Recommendation to the School Board