

Redistricting Community Meeting

November 28, 2022

**Brownsburg Community
School Corporation**



Top 3 Take Aways

1. The Redistricting Committee has worked incredibly hard to understand the redistricting process and to make decisions and recommendations that are within certain parameters.
2. The parameters within which the Redistricting Committee must work allow us to be financially responsible and to keep our schools balanced.
3. When the redistricting process is complete, we will have 8 great elementary schools.



Redistricting Committee

- The purpose of the Redistricting Committee was to develop a plan to recommend to the School Board that will adjust neighborhood school placements in order to populate Crossroads Elementary. This will also impact the feeder program.
- The call for volunteers went out in all school newsletters last spring and the opportunity was available for any parent to be a participant. The meeting dates were also shared at that time. All parents who volunteered were included on the Redistricting Committee. After the first meeting, we did not add additional members as we believed it was critical for all members to attend all the meetings.



History of Redistricting

	New School	Imbalance of Enrollment Across District	Student Moves to One School	Potential for Double Student Redistricting	Large Neighborhoods Divided
Redistricting 2014/2015	No	Yes	No	No	No
Redistricting 2018/2019	Yes	No	Yes	Yes	Yes
Redistricting 2023/2024	Yes	No	No	No	Yes

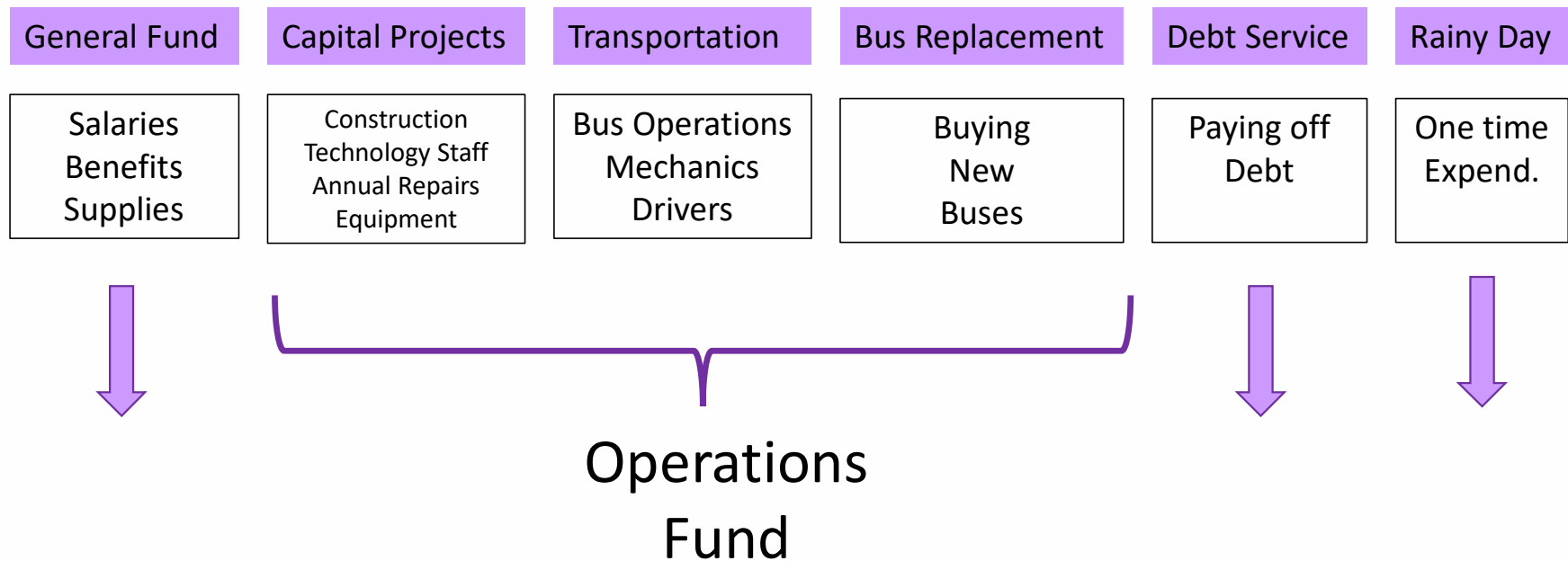


Take Aways from Previous Redistricting

- Strategies to Keep:
 - Anonymous neighborhoods
 - Consideration for SES and diversity balancing
 - Walking neighborhoods
 - Large neighborhoods
 - Homes not part of neighborhoods
 - Space available to maintain desired diversity and poverty ranges
 - Allow parents to volunteer to serve on the committee



School Finance – What has changed?



Fund Flexibility

Education
Fund

Operations
Fund



How much to add a route?

Year 1 Initial Costs

- New Bus Purchase: \$200,000
- Driver Compensation: \$35,000
- Annual Operational Cost: \$30,000 (insurance, supplies, fuel)

Total Cost ~ \$265,000 per route

Year 2 and Beyond

- Driver Compensation: \$35,000
- Annual Operational Cost: \$30,000 (insurance, supplies, fuel)

*More expensive to maintain as bus gets older

Total Cost ~ \$65,000 per route



Parameters to Consider for Redistricting

1. Consider the financial impact so that we can drive as much money as possible into classrooms (keep class sizes small).
2. Impact the fewest number of families while achieving desired enrollment numbers.
3. Equalize poverty rates in each school.
4. Maintain a representation of our community of the racial diversity in each school.
5. Create new classes within the parameters previously shared.
 - Kdg – 2nd Grade: 18-22 students
 - 3rd – 5th Grade: 22-26 students
 - 6th – 8th Grade: 26-28 students
- 6. When all else fails – go back to parameter #1**



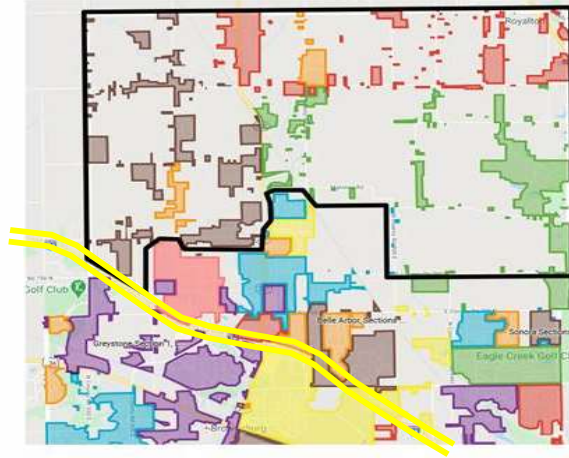
Financial Impact of Redistricting

- When we looked at opportunities to increase efficiencies the following are areas with the greatest potential:
 - Northern Area
 - Walking Neighborhoods
 - Feeder Pattern

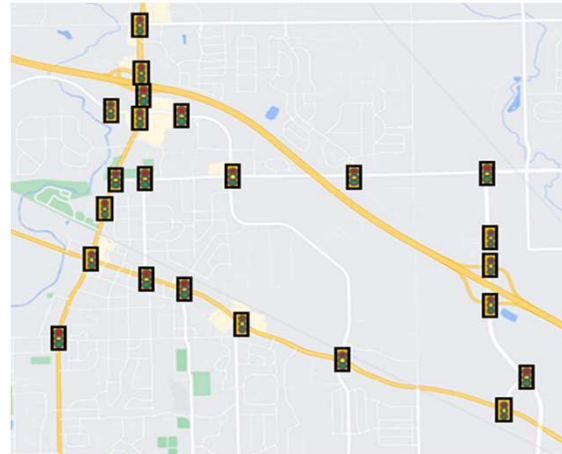


Reconfiguration of Northern Areas

- We currently have four elementary school boundaries in the northern tier. For this school year, it requires 6 buses to pick up and drop off those students within 1 hour and 20 minutes.
- To continue to meet the current school day schedule and meet financial goals, we believe this area needs to be reduced to two elementary schools.



- Elementary Schools:
 - Four schools
 - Six buses
 - 49,950+ miles annually
 - 165 students
 - 27+ students/bus average
- Middle School:
 - Two schools
 - Six buses
 - 48,975+ miles annually
 - 86 students
 - 14+ students/bus average
- High School:
 - Four buses
 - 49,750+ miles annually
 - 55 students
 - ~14 students/bus average
- Overall:
 - 16 buses
 - 148,675+ miles annually
 - 306 students
 - 19+ students/bus average
- If this area were assigned to two elementary and two middle schools:
 - Nine buses
 - 34 students/bus average



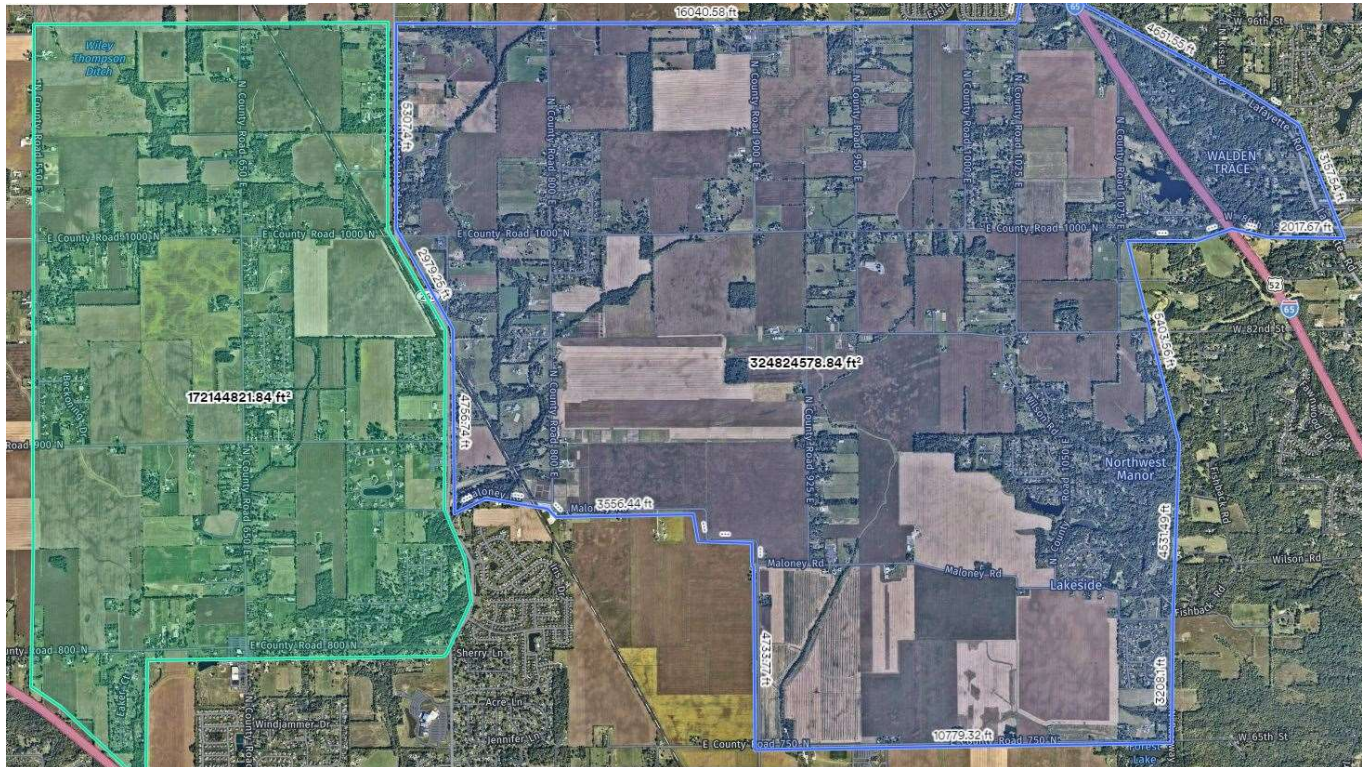
Traffic Lights:
 2007 = 11
 2015 = 15
 2021 = 23



Important to Note: Any decisions that will reduce (or keep the same) the number of bus routes positively impacts the overall budget which in turn impacts things like class sizes and educational services.

Northern Tier Option 1

Option 1				
	Proposed	Current	Savings	\$65,000/yr
Elementary	3 buses*	5 buses	2 buses	\$130,000/yr
Middle School	2 buses	3 buses	1 bus	\$65,000/yr
High School	3 buses	3 buses	0	0
TOTAL SAVINGS			3 buses	\$195,000
*In future years, we could save 1 bus if student enrolled declined in this area				



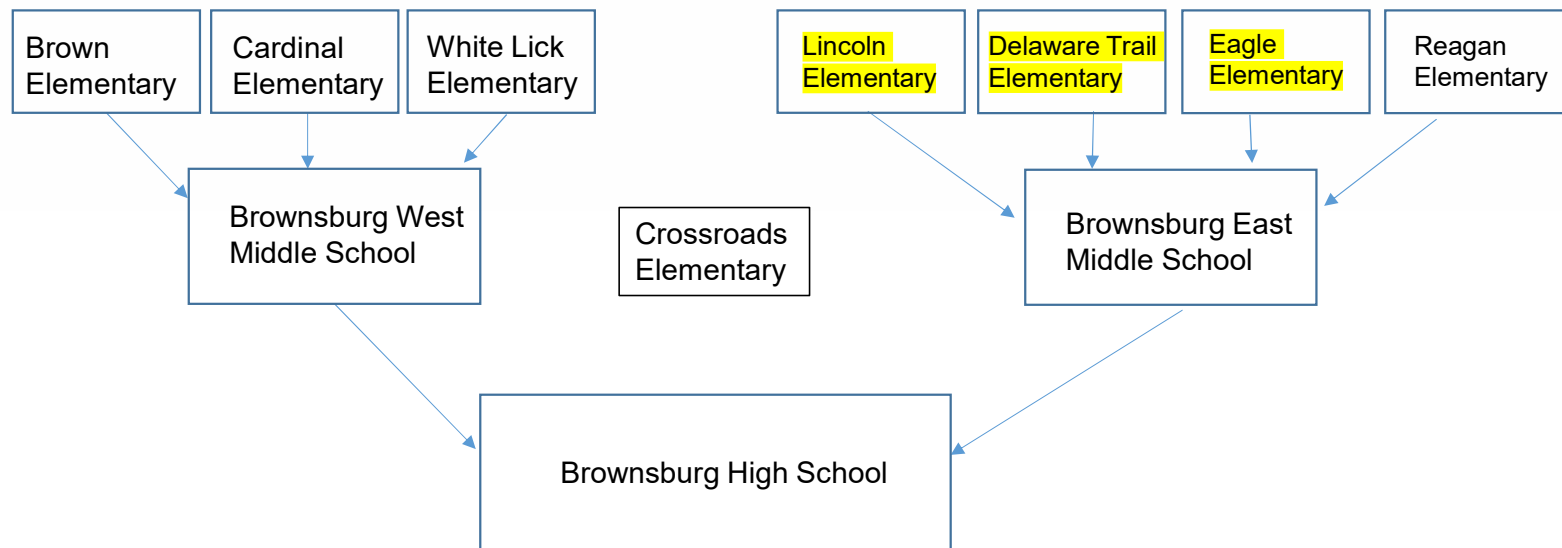
Walking Neighborhoods

- Leave walking areas districted as is with the following exceptions:
 - Beacon Point currently is a bus neighborhood to Lincoln and walks to East.
 - Creekside Commons East is a bus neighborhood for Reagan and walks to East.
 - For financial benefit, these two neighborhoods will be moved to Crossroads Elementary. Crossroads will then feed to East Middle School.
 - Meadow Chase – currently is a walking neighborhood to Delaware Trail and East. Next year will be a walking neighborhood to Crossroads and East.
- Placing Crossroads as an East feeder will require another East feeder to move to West.



Elementary Feeder Configuration

Crossroads Elementary will become part of the elementary feeder configuration. Part of this committee's work will be to determine any changes needed to the feeder pattern. It will be important to keep in mind the impact of walking areas at both the elementary and middle school.



ISTEP/ILEARN – Historical Data

Out of 292 Public School Corporations...

- 2009 – 2010 BCSC ranked 22nd
- 2010 – 2011 BCSC ranked 16th
- 2011 – 2012 BCSC ranked 5th
- 2012 – 2013 BCSC ranked 5th
- 2013 – 2014 BCSC ranked 6th
- 2014 – 2015 BCSC ranked 3rd
- 2015 – 2016 BCSC ranked 1st
- 2016 – 2017 BCSC ranked 1st
- 2017 – 2018 BCSC ranked 1st
- 2018 – 2019 BCSC ranked 1st
- 2019 – 2020 No Test due to CV-19
- 2020 – 2021 BCSC ranked 1st
- 2021 – 2022 BCSC ranked 1st

Passing rate of both
ELA and Math



Student Enrollment

School	2013-2014* 9.13.13	2014-2015 9.12.14	2017-2018* 9.15.17	2018-2019 9.14.18	2022-2023* 8.17.22
Brown Elementary	543	649	733	617	750
Cardinal Elementary	505	623	594	579	545
Crossroads Elementary	N/A	N/A	N/A	N/A	N/A
Delaware Trail Elementary	480	610	638	605	589
Eagle Elementary	795	629	748	656	588
Lincoln Elementary	N/A	N/A	N/A	508	651
Reagan Elementary	667	617	680	577	567
White Lick Elementary	582	579	601	579	662
Brownsburg East MS	1,155	1,034	1,070	1,169	1,336
Brownsburg West MS	757	913	985	903	1,035
Brownsburg High School	2,299	2,292	2,528	2,651	3,023



*Indicates the year prior to redistricting

Average Class Size, Grades K - 8

	Preferred Size	2013-2014*	2014-2015	2017-2018*	2018-2019	2022-2023*
Kindergarten	18 - 22	21.1	18.8	19.6	20	19.7
1st	18 - 22	20.2	19.4	20.6	20.1	20.3
2nd	18 - 22	20.4	19.4	19.7	20	18.8
3rd	22 - 26	21.1	22	22.2	22.2	22.2
4th	22 - 26	21.9	22.3	23.2	24	22.5
5th	22 - 26	22.9	23.3	23.6	24.3	22.4
6th	24 - 28	28.4	26.5	27.5	27.7	26.3
7th	24 - 28	27.3	27.8	25.7	26.2	24
8th	24 - 28	25.3	24.5	23.8	26.3	25.9



*Indicates the year prior to redistricting

School Size

5 Kindergarten Classrooms – 20 students x 5 = 100 students

5 First Grade Classrooms – 20 students x 5 = 100 students

5 Second Grade Classrooms – 20 students x 5 = 100 students

4 Third Grade Classrooms – 25 students x 4 = 100 students

4 Fourth Grade Classrooms – 25 students x 4 = 100 students

4 Fifth Grade Classrooms – 25 students x 4 = 100 students

(10 per grade level in the 2/3 and 4/5 high ability program)

This would put all of our elementary schools at roughly 640 students.

An enrollment of 640 students allows for related arts programming, lunch room capacity, and media center capacity to operate within desired limits.



School Size and Special Programs

	Number of Classrooms	Special Programs
Brown	33	Life Skills
Cardinal	30	0
Crossroads	33	0
Delaware Trail	30	Emotional Disability
Eagle	33	0
Lincoln	33	0
Reagan	30	0
White Lick	30	Bridge

The classrooms used for the Life Skills, ED, and Bridge programs are not included in the classroom counts.



Question

- If you had to pick just one, how do you believe most parents would respond and why?
 - My elementary school is the best in BCSC.
 - My elementary school is great – just like all of the other elementary schools in BCSC.



Balancing Poverty Rates/SES

- The district average was 21.42% in 2017. The district average is currently 31.75%.
- The committee's goal will be to redistrict neighborhoods so that all schools are closer to the district average. Our goal is to be +/- 3% of the district average.
- The desired range would then be 28.75% - 34.75%.



School	2022 - 2023 Percentages
Brown	34.67%
Cardinal	30.64%
Delaware Trail	25.98%
Eagle	26.19%
Lincoln	34.25%
Reagan	34.39%
White Lick	27.95%
BEMS	32.04%
BWMS	36.43%
BHS	30.43%*
District Total	31.75%

* As students enter high school, fewer families apply for lunch/textbook support.

Balancing Racial Diversity

- The difference between the highest and lowest diversity percentages at our schools (comparing elementary schools) is currently 17.14%.
- Our goal would be that any movement of students would cause the diversity rates in our schools to move closer to the district average.



School	2022 - 2023 Percentages
Brown	41.87%
Cardinal	25.87%
Delaware Trail	29.20%
Eagle	31.46%
Lincoln	43.01%
Reagan	35.45%
White Lick	35.05%
BEMS	35.55%
BWMS	35.07%
BHS	34.24%
District Total	34.95%

Neighborhood Information Large Neighborhoods



- The map on the left shows the sections, as determined by the builder, of Lake Ridge.
- The sections were grouped to subdivide the neighborhood.
- The Redistricting Committee's recommendation divided the neighborhood between two schools.
- The boundaries are shown in the map to the right!



Neighborhood Information

Large Neighborhoods 2022

- We currently have 15 neighborhoods with more than 70 students in K – 5.
- *These are divided neighborhood sections that were divided for the 2017 Redistricting. Even divided, some of the sections are on the list for 2022 Redistricting.
- Thornburg, Creekside Commons, and Bersot Crossing all include walking sections.

Bersot Crossing	Highland Springs	Summer Ridge
Branches East*	Lake Ridge West*	Tallgrass
Branches West*	Laurelton	Thornburg
Creekside Commons	Silverleaf	Williamsburg
Hession Fields	Sonora	Wynne Farms E



Large Neighborhoods

- These neighborhoods will be divided into smaller divisions based on the section numbers used by the developers.
 - If a neighborhood is in a walking area, the neighborhood would not be divided if it could not be a walking area to more than one school.
- These divisions are shared on maps around the room.
- One challenge to consider will be neighborhoods that are still being built that may not be at the 70-student count yet but are likely to have more than 70 students.
 - Greystone (56 students/200 homes), Belle Arbor (44/170), Fairview (0/137)



Movement of Students

	8/17/22 Enrollment	Desired Size	Difference (approx.)
Brown	750	+/- 580	- 170
Cardinal	545	+/- 520	- 25
Crossroads	0	+/- 580	+580
Delaware Trail	589	+/- 520	- 70
Eagle	588	+/- 580	- 10
Lincoln	651	+/- 580	- 70
Reagan	567	+/- 520	- 50
White Lick	662	+/- 520	- 140
Total	4352	4400	



Previously Redistricted Families and Redistricted 5th & 8th Grade Students

- Students who were in kindergarten when the last redistricting was completed (if they were redistricted, the move would occur when they went to 1st grade), will enter 6th grade for the 2023-2024 school year.
 - **This means no child, unless retained, would have been redistricted twice during elementary school.**
 - **Families with multiple children could be impacted by the 2014, 2017, and the upcoming redistricting.**
- During the 2014 and 2017 redistricting, students who were redistricted and would be entering 5th or 8th grade were allowed to remain at their current school. Parents were required to provide transportation, younger siblings were required to move to new school, students with poor attendance would move to new school.



Redistricting Timeline

- ✓ **May 2022** – Invitation in newsletters to participate in Redistricting Committee
- ✓ **September 1, 2022** – Redistricting Meeting #1
- ✓ **September 29, 2022** – Redistricting Meeting #2
- ✓ **October 27, 2022** – Redistricting Meeting #3
- ✓ **November 17, 2022** – Redistricting Meeting #4
- ✓ **November 28, 2022** – Redistricting Community Update
- **December 8, 2022** – Redistricting Meeting #5
- **December 12, 2022**– Recommendation for Board Approval



Following Committee Recommendation and Approval

- **January 20, 2023** – Parent Notification
- **January 24, 2023** – Elementary Principal Meeting, Preliminary impact shared
- **February 10, 2023** – Parents of 5th and 8th grade student commitments due (Tentative)
 - 2nd grade HA numbers plugged in
 - Student enrollment numbers updated
 - 5th grade and 8th grade stay put updated
- **February 14, 2023** - Principal Meeting to share teacher impacts
- **February 15, 2023** – Teachers receive information during PLC
- **February 24, 2023** – Requests are due (teacher placement)
- **February 27, 2023** – Jim, Kat, and Jodi have preliminary teacher placement meeting
- **March 17, 2023** – Teacher placement notification

Redistricting and Staffing

- In the spring of 2022, Tim Cooper was named Crossroads Elementary Principal and Lisa Riley was named Crossroads Elementary Assistant Principal.
- After families are notified of the redistricting impacts, teachers will complete transfer paperwork.
- It is our goal to balance the experience of teachers at all our schools, including Crossroads. New teachers who are hired this year will be divided between all the elementary schools.



Questions

