

Redistricting Committee Meeting

September 29, 2022

**Brownsburg Community
School Corporation**



Agenda

- Welcome
- Table Introductions
- Review the September 1st Meeting
 - Purpose of Committee
 - Factors to Consider
- Northern Tier Options and Decision
- Walking Neighborhoods and Decisions
- Large Neighborhoods
- Tiny Neighborhoods and Decision
- What Gets Moved, Explanation, and Scenarios
- Upcoming Meetings



Table Introductions

- The team of parents and teachers as parents at each group will stay the same for the remainder of the meetings.
- The administrator(s) facilitating the group will change each time the committee meets. This change will allow committee members to meet different leaders from across the district.
- Please share your name, the grade(s) and school(s) your child(ren) attend.



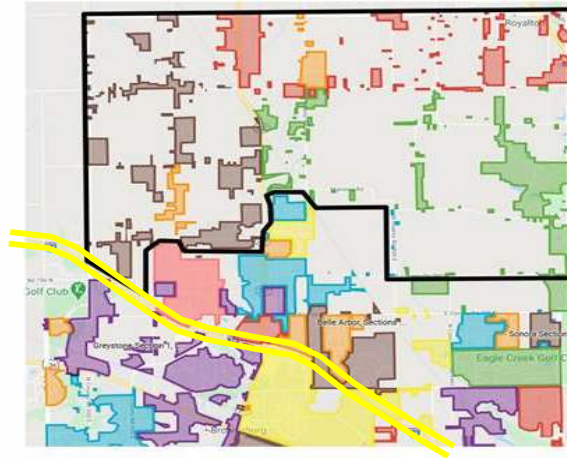
Purpose of Redistricting Committee

- The Redistricting Committee will develop a plan to recommend to the School Board that will change neighborhood school placements in order to populate Crossroads Elementary.
- Parameters were shared at the first meeting.
 1. Consider the financial impact so that we can drive as much money as possible into classrooms (keep class sizes small).
 2. Impact the fewest number of families while achieving desired enrollment numbers.
 3. Equalize poverty rates in each school.
 4. Maintain a representation of our community of the racial diversity in each school.
 5. Create new classes within the parameters previously shared.
 - Kdg – 2nd Grade: 18-22 students
 - 3rd – 5th Grade: 22-26 students
 - 6th – 8th Grade: 26-28 students
 6. When all else fails – go back to parameter #1
- Feel free to share the information you learn tonight and in upcoming meetings with your friends and neighbors.

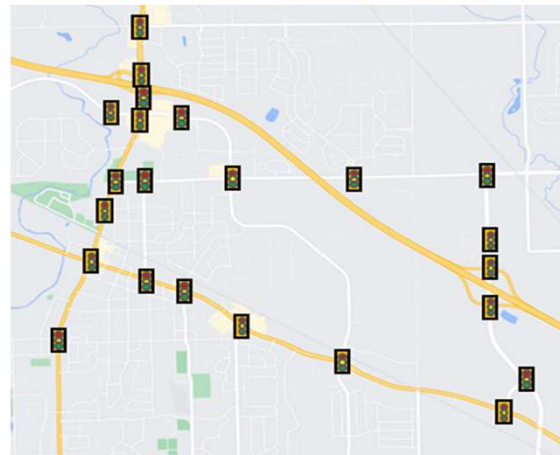


Reconfiguration of Northern Areas

- We currently have four elementary school boundaries in the northern tier. For this school year, it requires 5 buses to pick up and drop off those students within 1 hour and 20 minutes.
- To continue to meet the current school day schedule and meet financial goals, we believe this area needs to be reduced to two elementary schools.



- Elementary Schools:
 - Four schools
 - Six buses
 - 49,950+ miles annually
 - 165 students
 - 27+ students/bus average
- Middle School:
 - Two schools
 - Six buses
 - 48,975+ miles annually
 - 86 students
 - 14+ students/bus average
- High School:
 - Four buses
 - 49,750+ miles annually
 - 55 students
 - ~14 students/bus average
- Overall:
 - 16 buses
 - 148,675+ miles annually
 - 306 students
 - 19+ students/bus average
- If this area were assigned to two elementary and two middle schools:
 - Nine buses
 - 34 students/bus average

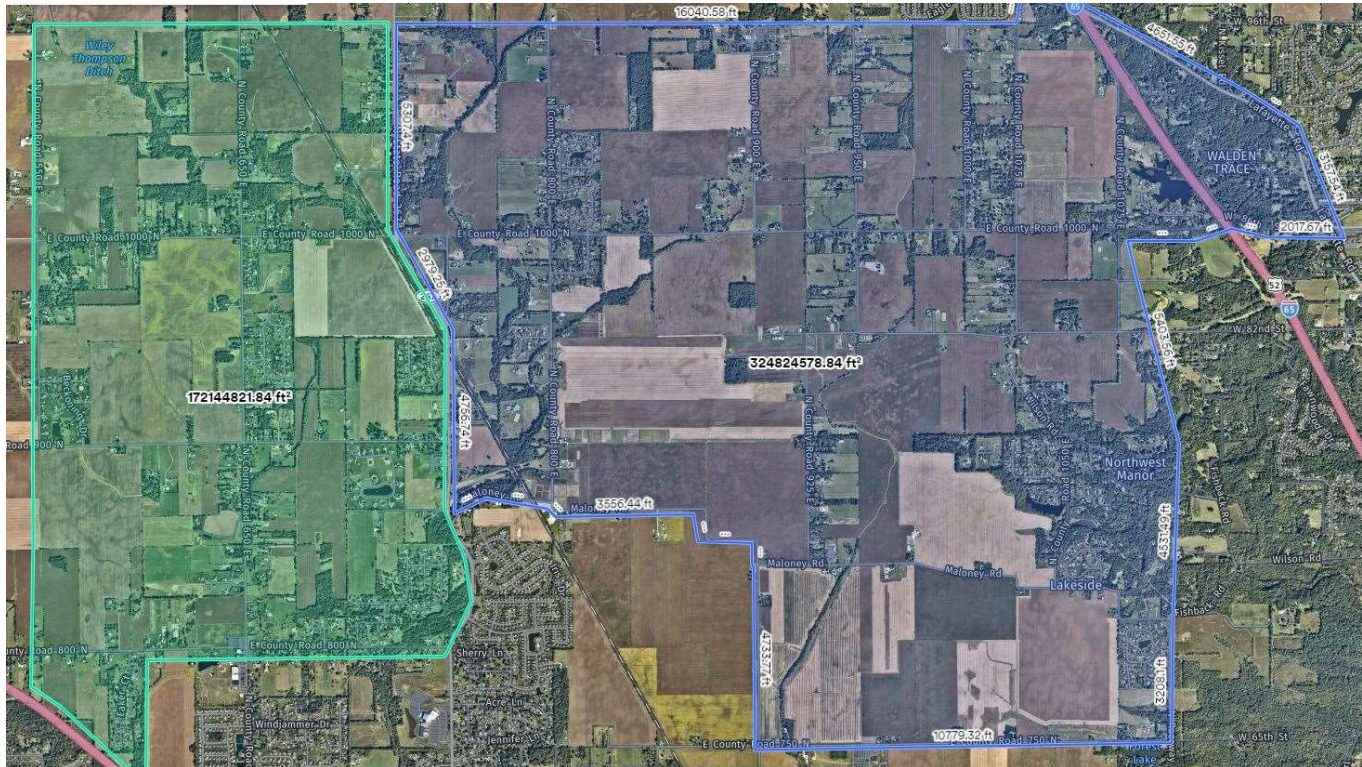


Traffic Lights:
 2007 = 11
 2015 = 15
 2021 = 23



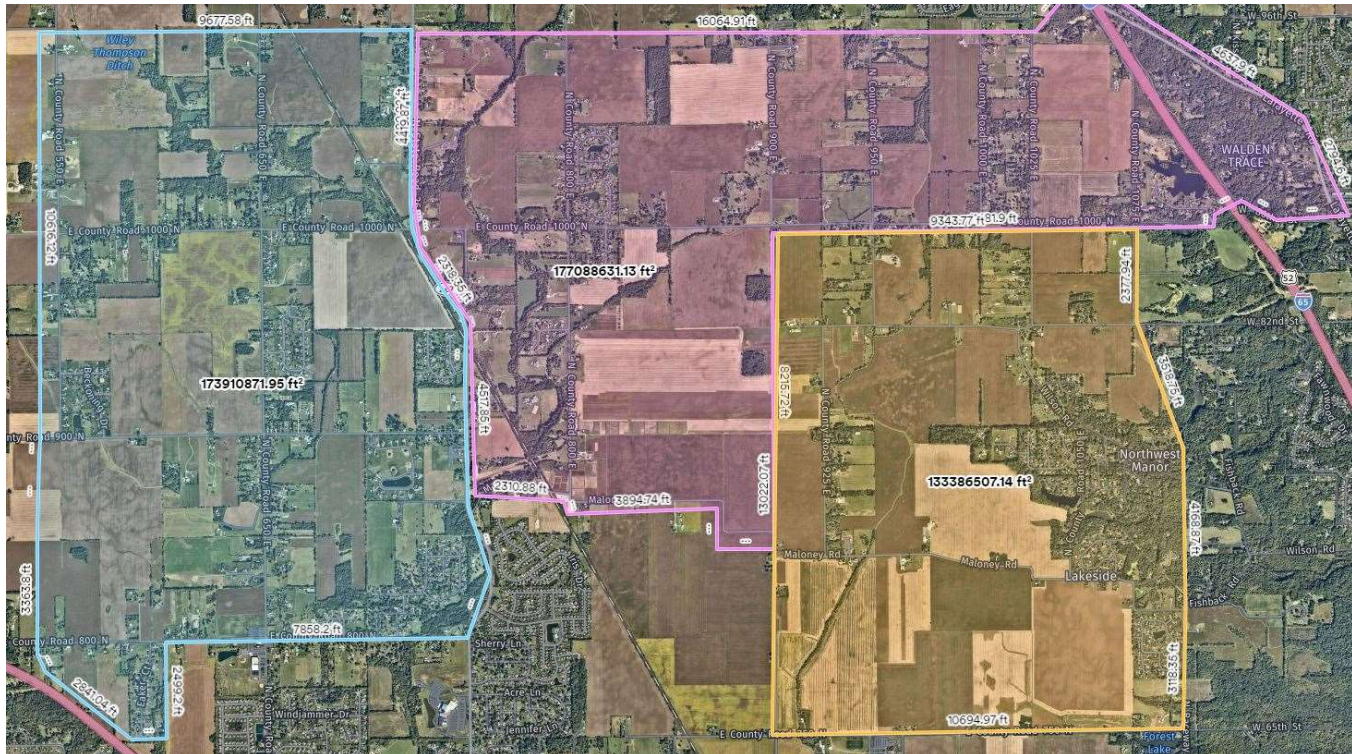
Important to Note: Any decisions that will reduce (or keep the same) the number of bus routes positively impacts the overall budget which in turn impacts things like class sizes and educational services.

*In future years, we could save 1 bus if student enrolled declined in this area



Northern Tier Option 2

Option 2				
	Proposed	Current	Savings	\$65,000/yr
Elementary	3 buses	5 buses	2 buses	\$130,000/yr
Middle School	2 buses	3 buses	1 bus	\$65,000/yr
High School	3 buses	3 buses	0	0
TOTAL SAVINGS			3 buses	\$195,000



Northern Tier Decision

- Pros and Cons of Option 1
- Pros and Cons of Option 2
- Pros and Cons of Option 3
- What does this look like when we begin to move neighborhoods? *Northern Tier pieces may have more than 70 students. A section made up of students from multiple schools will be grouped to the school with the highest number of students.*
 - Explanation: If there are 40 students in a section and 25 attend White Lick, 5 attend Brown, and 10 attend Reagan. That section will become a WL area with 40 students.
- 3 Corner Activity
- Northern Tier Decision: **Option #?**



Walking Neighborhoods

- Brown Elementary has 7 walking neighborhoods. Of these, 2 could also walk to Eagle. They include: Gordon Heights and Maple Brook Gardens. Regardless of school placement, these neighborhoods will still need middle school transportation. No recommendation to move.
- Cardinal Elementary has 4 walking neighborhoods. Of these, 2 could also walk to Delaware Trail. They include: Holiday Pines and Lincoln Point. Holiday Pines and Lincoln Point could walk to either EMS or WMS. No recommendation to move.
- Delaware Trail Elementary has 1 walking neighborhood. Meadow Chase could also walk to Crossroads. While this neighborhood could walk to WMS, its northernmost street is directly across from East Middle School. Recommendation: Consider proximity to Crossroads.
- Eagle Elementary has 3 walking neighborhoods. None of these could walk to another elementary school. All of these neighborhoods require transportation to EMS and would need transportation to WMS if a change was made. No recommendation to move.
- Lincoln Elementary has no walking neighborhoods. No recommendation.
- Reagan Elementary has 3 walking neighborhoods. Of these, all could walk to Lincoln and include: Hornaday Heights, Ironwood, and Creekside Commons West. All of these neighborhoods walk to EMS.
- White Lick Elementary has 3 walking neighborhoods. Of these 2 could walk to Delaware: Brownswood and Hunters Cove. One of these could walk to Eagle, Sugar Bush South. No recommendation to move.
- East Middle School has 2 walking neighborhoods that are not walking neighborhoods to an elementary school. Creekside Commons East attends RE but uses buses. Beacon Pointe attends LE but uses buses. Recommendation move to Crossroads and become elementary walking areas. Need to consider middle school placement staying at WMS.
- West Middle School walking areas are also elementary walking areas.



Walking Neighborhoods

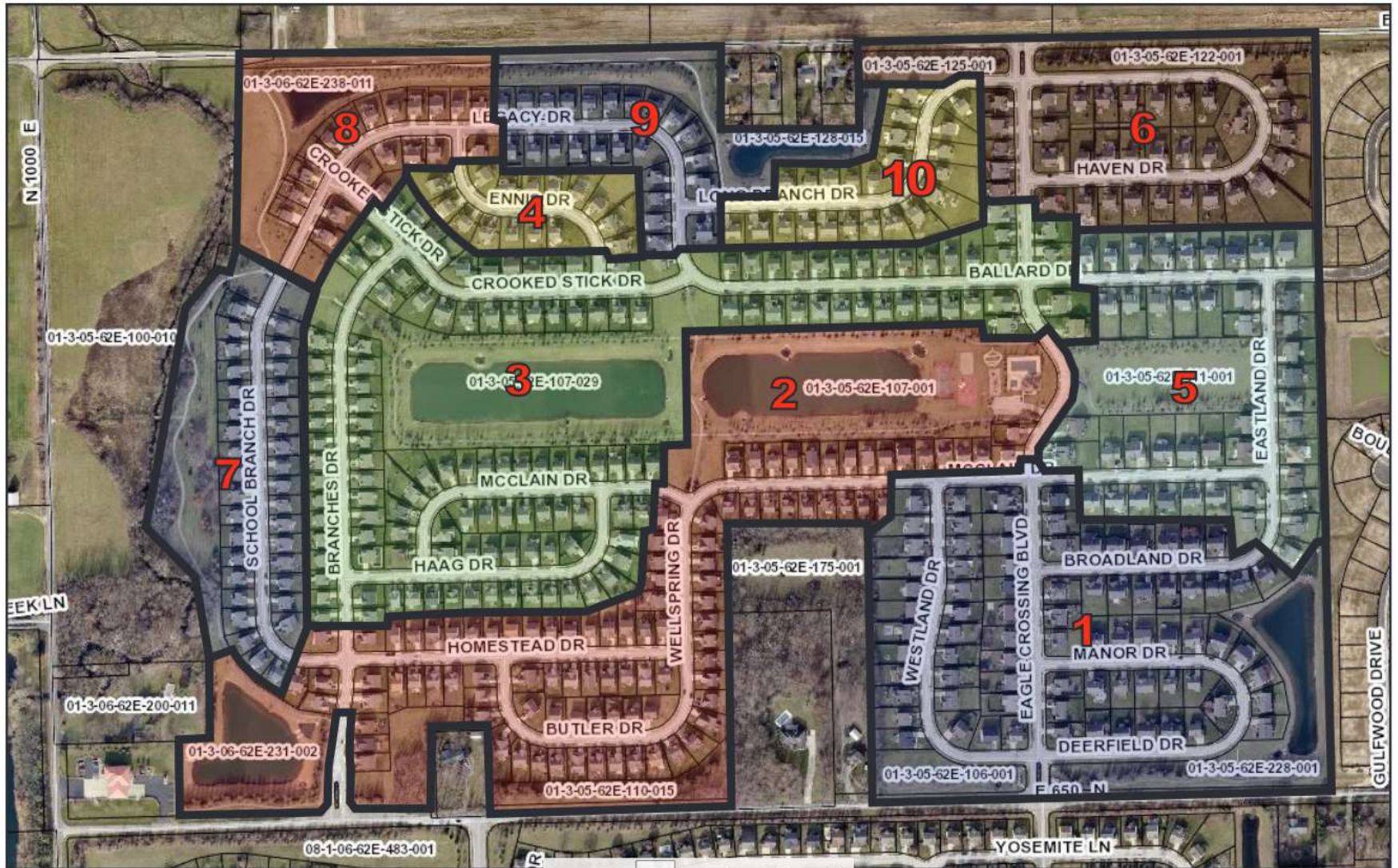
- Recommendations:
 - Leave walking areas districted as is with the following exceptions:
 - Make Beacon Point and Creekside Commons East walking areas for Crossroads Elementary.
 - For financial benefit, this requires Crossroads Elementary to feed to East Middle School.
 - At this time, it is not necessary to change the feeder pattern. Feeder pattern can be decided after elementary movements are made. This will allow for an understanding of the possible impact of the elementary movement on the middle school demographics.
 - Two corners
 - Discuss Meadow Chase – currently walking to Delaware Trail, located closer to Crossroads
 - Two corners

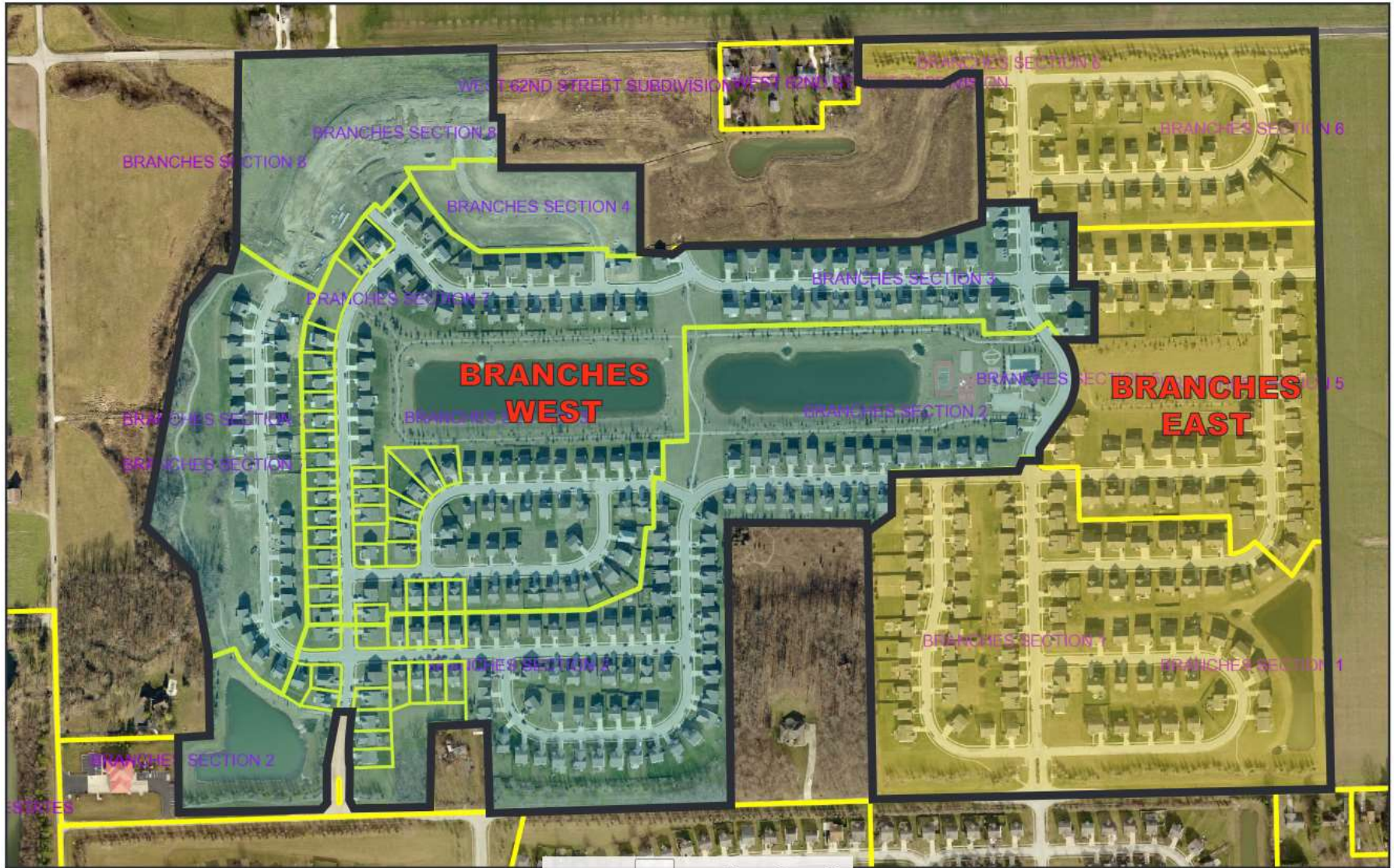


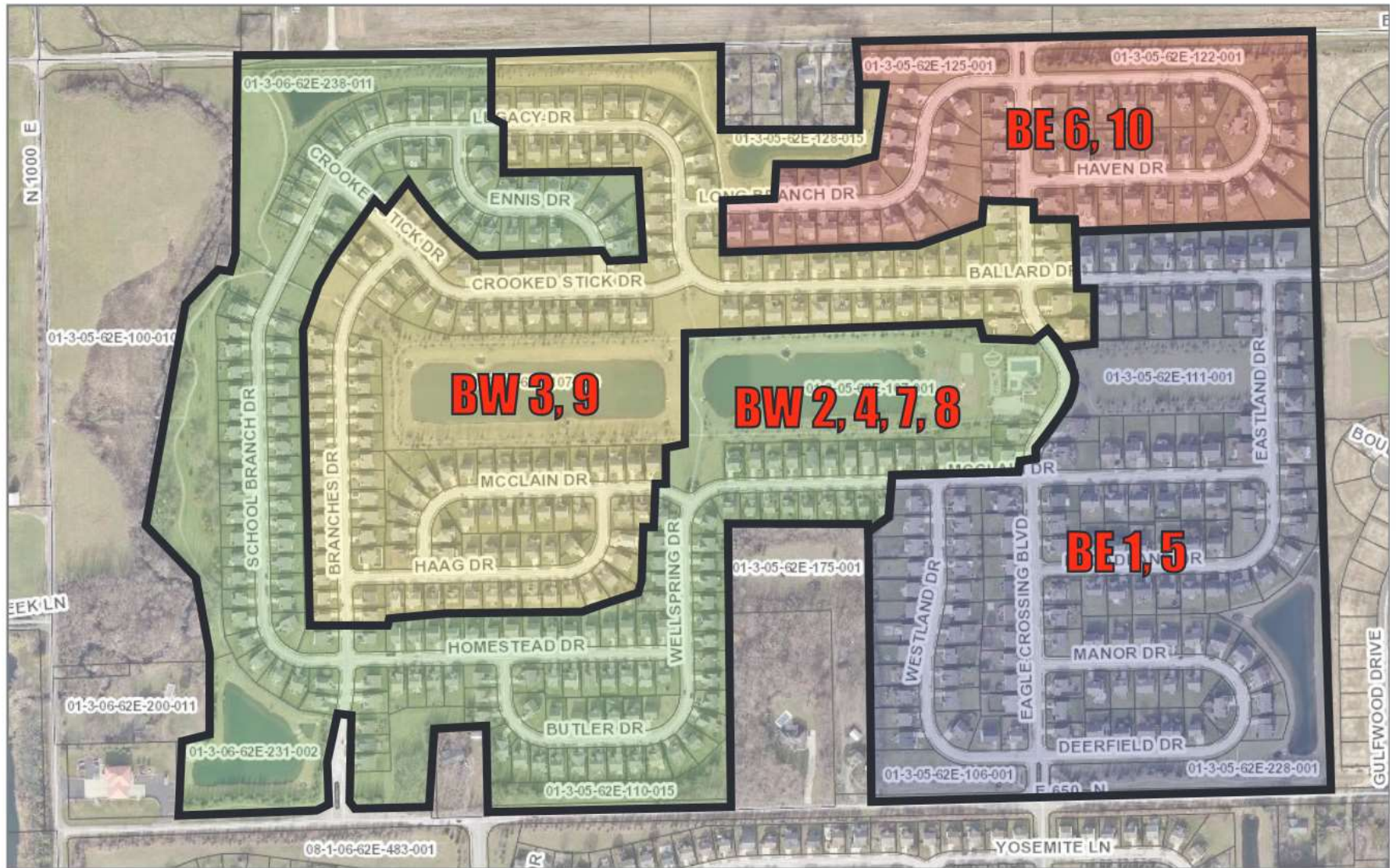
Large Neighborhoods

- Neighborhoods with 70 or more K – 5 students were divided.
 - Branches East & Branches West
 - Hession Fields
 - Lake Ridge
 - Silverleaf
 - Summer Ridge
 - Williamsburg Villages
 - Thornburg and Bersot Crossing both walk to Cardinal. These were not divided.
 - Creekside Commons
 - Highland Springs
 - Laurelton
 - Sonora
 - Tallgrass
 - Wynne Farms
- Color copies of neighborhoods showing the splits are displayed around the room and will be displayed at all meetings.
- Keep in mind of the 14 large neighborhoods that were split in the Lincoln redistricting process, only 2 neighborhoods ended up being split.









Tiny Neighborhoods

- We have 74 neighborhoods with 9 or fewer students.
 - 10 with 1 student
 - 14 with 2 students
 - 4 with 3 students
 - Our concern is privacy of students with regard to poverty and diversity
- Recommendation: Do not include these neighborhoods for redistricting. Allow transportation to assign these small pieces based on surrounding areas and bus routes.
 - Two corners



By Building...What gets moved? Before Northern Tier Decision

School	Enrollment*	# to Move Out	Poverty (FRALPHA) Percentage	Diversity Percentage
Brown Elementary	764	184	35.99%	42.28%
Cardinal Elementary	546	26	30.95%	26.37%
Delaware Trail Elementary	602	82	25.91%	30.23%
Eagle Elementary	586	6	26.28%	31.40%
Lincoln Elementary	660	80	33.79%	43.79%
Reagan Elementary	568	48	33.98%	34.68%
White Lick Elementary	658	138	26.90%	34.80%



Poverty: 31.14%, range 28.14 – 34.14%

Diversity: 35.48%, range is no greater than 17.28

By Building...What gets moved?

Northern Tier Option 1

School	Enrollment*	# to Move Out	Poverty (FRALPHA) Percentage	Diversity Percentage	SES Goal	Diversity Goal
Brown Elementary	770	190	35.71%	41.82%	Remove Lower SES	Remove More Diversity
Cardinal Elementary	545	25	31.01%	26.42%	Remove Lower SES	Remove Less Diversity
Crossroads Elementary						
Delaware Trail Elementary	600	80	26.00%	30.33%	Remove Higher SES	Remove Less Diversity
Eagle Elementary	584	4	26.37%	31.51%	Remove Higher SES	Remove Less Diversity
Lincoln Elementary	631	51	34.39%	45.01%	Remove Lower SES	Remove More Diversity
Reagan Elementary	534	14	34.83%	36.70%	Remove Lower SES	Remove Less Diversity
White Lick Elementary	720	200	26.39%	32.92%	Remove Higher SES	Remove Less Diversity



Poverty: 31.14%, range 28.14 – 34.14%

Diversity: 35.48%, range is no greater than 17.28

By Building...What gets moved?

Northern Tier Option 2

School	Enrollment*	# to Move Out	Poverty (FRALPHA) Percentage	Diversity Percentage	SES Goal	Diversity Goal
Brown Elementary	770	190	35.71%	41.82%	Remove Lower SES	Remove More Diversity
Cardinal Elementary	545	25	31.01%	26.42%	Remove Lower SES	Remove Less Diversity
Crossroads Elementary						
Delaware Trail Elementary	600	80	26.00%	30.33%	Remove Higher SES	Remove Less Diversity
Eagle Elementary	584	4	26.37%	31.51%	Remove Higher SES	Remove Less Diversity
Lincoln Elementary	631	51	34.39%	45.01%	Remove Lower SES	Remove More Diversity
Reagan Elementary	615	95	32.03%	32.85%	Remove Lower SES	Remove Less Diversity
White Lick Elementary	639	119	28.01%	36.15%	Remove Higher SES	Remove More Diversity



Poverty: 31.14%, range 28.14 – 34.14%
Diversity: 35.48%, range is no greater than 17.28

By Building...What gets moved?

Northern Tier Option 3

School	Enrollment*	# to Move Out	Poverty (FRALPHA) Percentage	Diversity Percentage	SES Goal	Diversity Goal
Brown Elementary	770	190	35.71%	41.82%	Remove Lower SES	Remove More Diversity
Cardinal Elementary	545	25	31.01%	26.42%	Remove Lower SES	Remove Less Diversity
Crossroads Elementary						
Delaware Trail Elementary	600	80	26.00%	30.33%	Remove Higher SES	Remove Less Diversity
Eagle Elementary	584	4	26.37%	31.51%	Remove Higher SES	Remove Less Diversity
Lincoln Elementary	631	51	34.39%	45.01%	Remove Lower SES	Remove More Diversity
Reagan Elementary	615	95	32.03%	32.85%	Remove Lower SES	Remove Less Diversity
White Lick Elementary	639	119	28.01%	36.15%	Remove Higher SES	Remove More Diversity



Poverty: 31.14%, range 28.14 – 34.14%
Diversity: 35.48%, range is no greater than 17.28

By Building...What gets moved?

- District compared to Delaware Trail Elementary

Poverty (FRALPHA):

- 31.14% (District) 25.91% (Delaware Trail)

Since Delaware Trail's poverty rate is lower than the district average, we would look to move Higher SES out of DTE and move Lower SES in to DTE.

Diversity:

- 35.48% (District) 30.23% (Delaware Trail)

Since Delaware Trail's diversity rate is lower than the district average, we would want to move More Diversity in to DTE and move Less Diversity out of DTE.



Purpose of Redistricting Committee

- The Redistricting Committee will develop a plan to recommend to the School Board that will change neighborhood school placements in order to populate Crossroads Elementary.
- Parameters were shared at the first meeting.
 1. Consider the financial impact so that we can drive as much money as possible into classrooms (keep class sizes small).
 2. Impact the fewest number of families while achieving desired enrollment numbers.
 3. Equalize poverty rates in each school.
 4. Maintain a representation of our community of the racial diversity in each school.
 5. Create new classes within the parameters previously shared.
 - Kdg – 2nd Grade: 18-22 students
 - 3rd – 5th Grade: 22-26 students
 - 6th – 8th Grade: 26-28 students
 6. When all else fails – go back to parameter #1
- Feel free to share the information you learn tonight and in upcoming meetings with your friends and neighbors.



Group Work

- Each table is asked to come up with at least two scenarios of moves that can be made that fall within the parameters started earlier this evening.
- The scenarios will be then be collected and run through a database which will figure the impact of the moves on poverty and diversity rates. The results of all scenarios will be presented at our next meeting.
- Please write your scenarios on the paper provided.



Committee Member Responsibilities

- When asked about the work of the Committee by neighbors, other parents, people at the ball fields – be honest! Let them know about the work of the group and encourage them to come to the Community Meeting on November 28.
- When you hear people talking about redistricting and they are sharing incorrect information, let them know what you know.
- If you have gained new knowledge tonight that others will find interesting... share it!



If you have questions, ask!

Jim Snapp

jsnapp@brownsburg.k12.in.us

317-852-5726 (work)

317-509-5753 (cell)

Kat Jessup

kjessup@brownsburg.k12.in.us

317-852-5726 (work)

317-441-5711 (cell)



Meeting Dates and Topics

- ✓ Thursday, September 1– Introductions and Information (make up on 9/6)
- ✓ Thursday, September 29 – Northern Tier, Walking, and Scenarios
- Thursday, October 27 – Numbers and Problem Solving
- Thursday, November 17 – Problem Solving
- Monday, November 28 – Community Meeting
- Thursday, December 8 – Problem Solving or Finalizing Recommendation for the School Board
- Monday, December 12 – Recommendation to the School Board

