

Redistricting Meeting #1

Thursday, September 1st at 6:30 pm



Agenda

- Information About the Committee
- Objectives of the Group
- School Finance Information
- History of Redistricting and Community Growth
- District and School Information
- Redistricting Considerations
- Next Steps
 - September 29, October 27, November 17, December 8



Table Introductions

- The team of parents and teachers as parents at each group will stay the same for the remainder of the meetings.
- The administrator(s) facilitating the group will change each time the committee meets. This change will allow committee members to meet different leaders from across the district.
- Please share:
 - Name
 - The grade(s) and school(s) your child(ren) attend
 - Your reason for volunteering to be part of the committee



Information about the Committee

- Tonight's meeting is intended to provide the Redistricting Committee with information about our students, our schools, and the corporation. We plan to share information you will need to support your work as a member of the Redistricting Committee.
- The call for volunteers went out in all school newsletters last spring and the opportunity was available for any parent to be a participant. All parents who volunteered have been included on the Redistricting Committee. Currently, we have 112 people who have signed up to participate. This Committee is now set, we will not add additional members as we believe it is critical for all members to attend all the meetings.
 - For this meeting only, a make up meeting will be held on Tuesday, Sept. 6 at 4:30. Committee members not in attendance tonight will need to participate in that meeting to continue to be part of the Committee.
- At the end of tonight's meeting, you will receive a folder that will include a copy of this power point.
- Feel free to share the information you learn tonight and in upcoming meetings with your friends and neighbors.

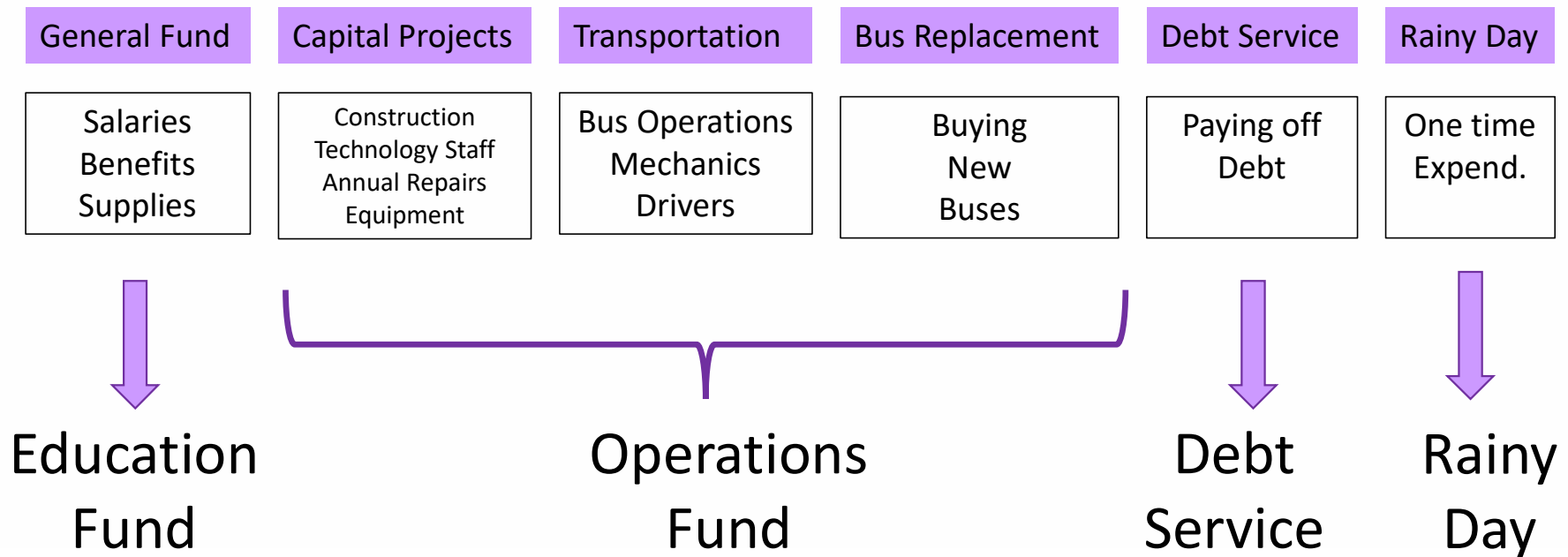


Objectives of Redistricting Committee

- The Redistricting Committee will develop a plan to recommend to the School Board that will change neighborhood school placements in order to populate Crossroads Elementary.
- Throughout tonight's meeting, information will be shared that will help to set parameters for the work of the Redistricting Committee. Some of the parameters will be different than the parameters used for previous redistricting.



School Finance – What has changed?



Fund Flexibility

Education
Fund

Operations
Fund



How much to add a route?

Year 1 Initial Costs

- New Bus Purchase: \$200,000
- Driver Compensation: \$35,000
- Annual Operational Cost: \$30,000 (insurance, supplies, fuel)

Total Cost ~ \$265,000 per route

Year 2 and Beyond

- Driver Compensation: \$35,000
- Annual Operational Cost: \$30,000 (insurance, supplies, fuel)

*More expensive to maintain as bus gets older

Total Cost ~ \$65,000 per route



Check In

- At your table discuss the information that was just shared.
- What take aways do you have from the information shared?
- How does the information shared impact redistricting?

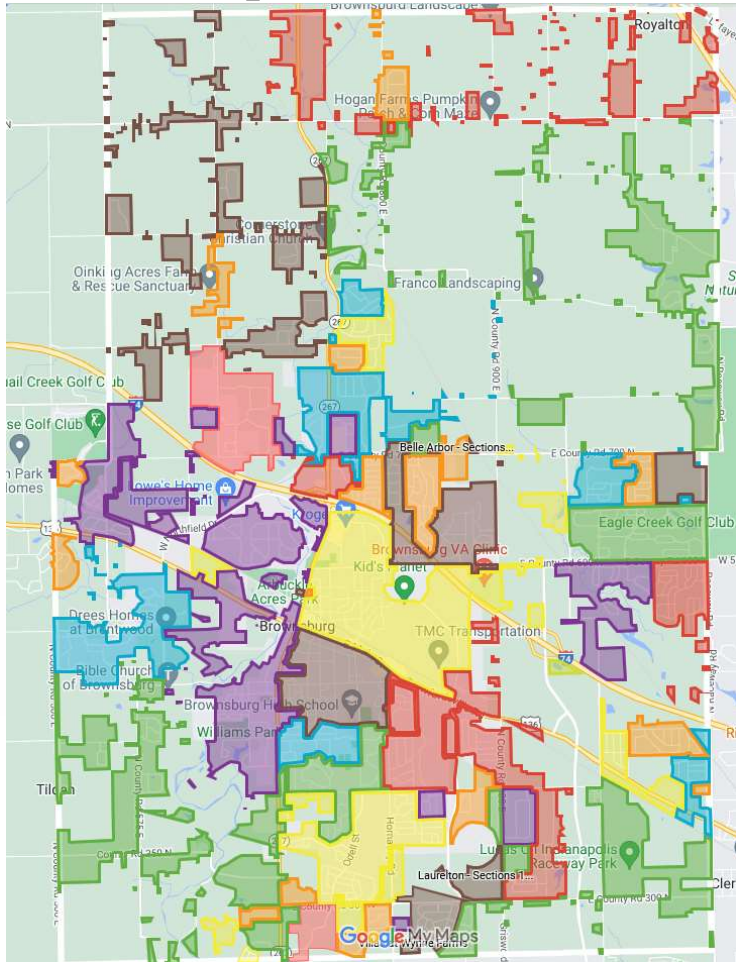


History of Redistricting

	New School	Imbalance of Enrollment Across District	Student Moves to One School	Potential for Double Student Redistricting	Large Neighborhoods Divided
Redistricting 2014/2015	No	Yes	No	No	No
Redistricting 2018/2019	Yes	No	Yes	Yes	Yes
Redistricting 2023/2024	Yes	No	No	No	Yes



Map of BCSC Boundaries

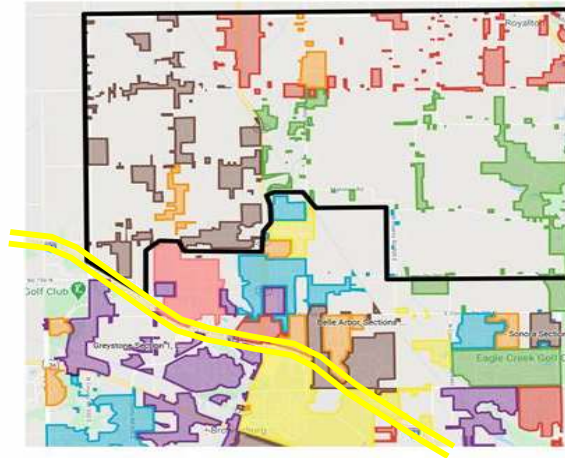


- This shows the current boundary map of BCSC. Each elementary school is a different color. Clicking on a color block will show the elementary and middle school assignment.
- The light green areas are currently unassigned. This shows the potential for growth in the district.
- Prior to 2014, the entire BCSC boundaries were assigned to schools. This meant that if a neighborhood was developed it was already assigned to a school giving little opportunity to balance enrollment.
- Since 2014, we use a “catchment” system to help determine school assignment. When a new neighborhood is being developed, we consider the number of homes, the price point of the homes, the proximity to bus routes, and available classrooms. Based on that information, a recommendation is made to the School Board for school placement. We no longer approve entire neighborhoods at one time. We approve 1 – 3 sections at a time depending on size.

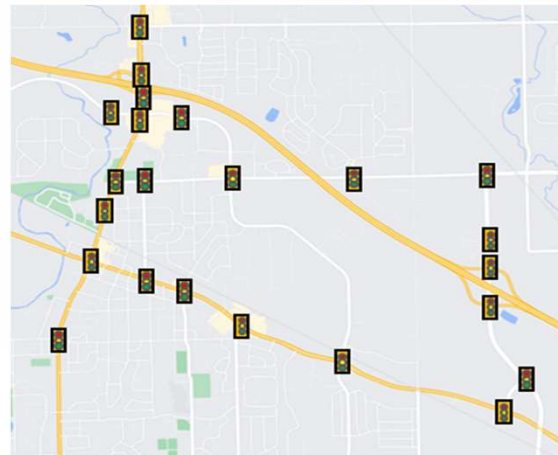
Brown – BE, Yellow – CE, Purple – DTE, Blue – EE, Orange – LE, Red – RE, Green - WLE

Reconfiguration of Northern Areas

- We currently have four elementary school boundaries in the northern tier. For this school year, it requires 6 buses to pick up and drop off those students within 1 hour and 20 minutes.
- To continue to meet the current school day schedule and meet financial goals, we believe this area needs to be reduced to two elementary schools.



- Elementary Schools:
 - Four schools
 - Six buses
 - 49,950+ miles annually
 - 165 students
 - 27+ students/bus average
- Middle School:
 - Two schools
 - Six buses
 - 48,975+ miles annually
 - 86 students
 - 14+ students/bus average
- High School:
 - Four buses
 - 49,750+ miles annually
 - 55 students
 - ~14 students/bus average
- Overall:
 - 16 buses
 - 148,675+ miles annually
 - 306 students
 - 19+ students/bus average
- If this area were assigned to two elementary and two middle schools:
 - Nine buses
 - 34 students/bus average



Traffic Lights:
2007 = 11
2015 = 15
2021 = 23

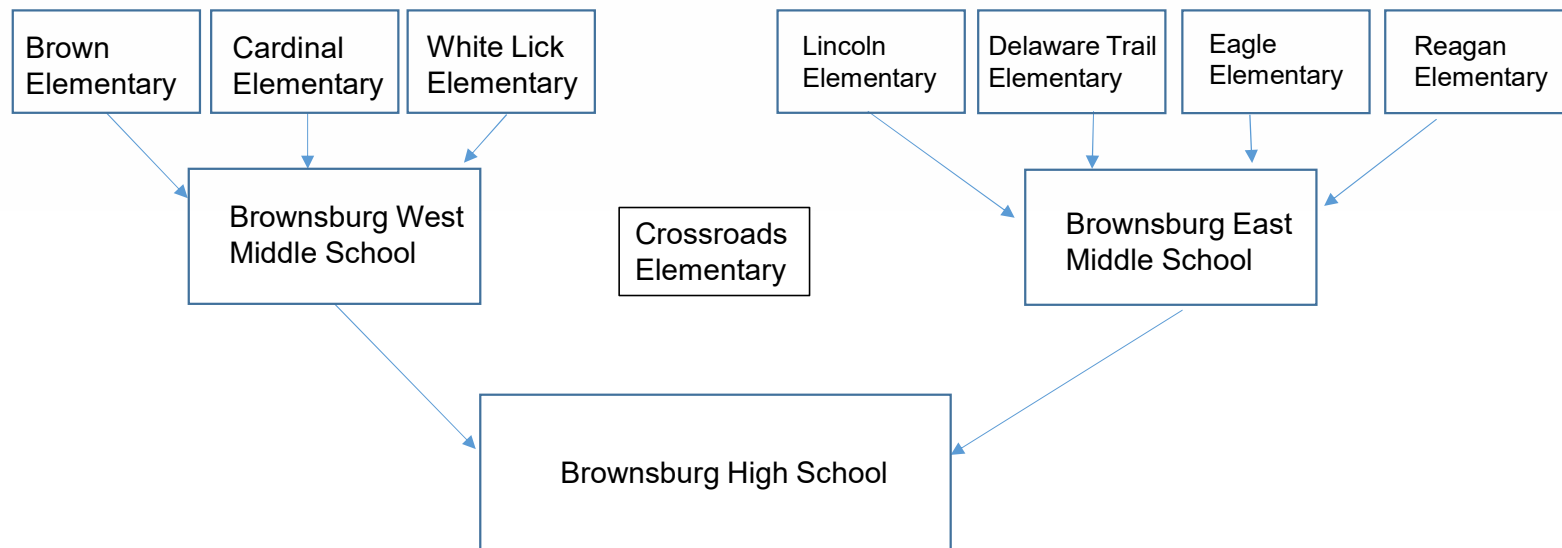


Important to Note: Any decisions that will reduce (or keep the same) the number of bus routes positively impacts the overall budget which in turn impacts things like class sizes and educational services.

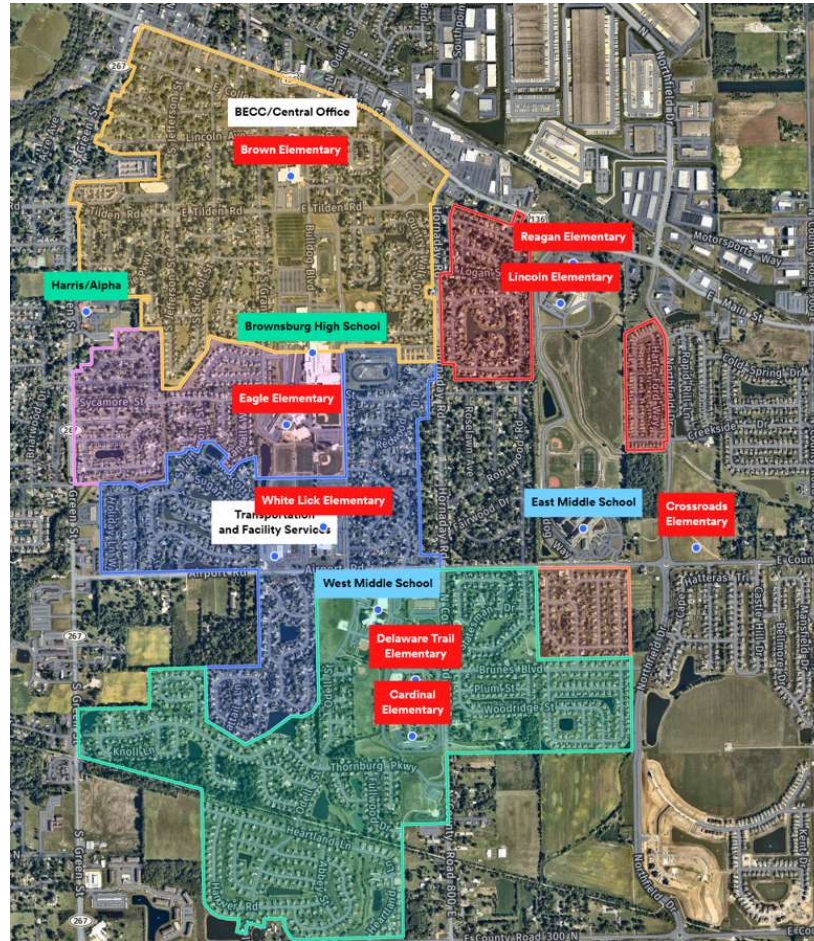
	New Placements	New Placements	New Placements	New Placements	New Placements	New Placements	New Placements	New Placements
Brown	In town, Apartments The Arbuckle 120 1B/1B, 88 2B/2B Approved 8/18	Not in town, Single Home Sonora Sections 1 and 2 (48 lots), \$220- 400K Approved 10/19 **274 homes in neighborhood	Not in town, Single and Paired Villas Laurelton, Section 1a and 1b (76 lots) Mid-\$200s, Approved 3/20 *** 289 homes in neighborhood	In town, Villas@Wynne Farms, 68 homes, \$230k - \$300K, Approved 11/2020	Not in town, Single Home Sonora Sections 3 and 4 (63 lots), \$220- 400K Approved 11/20 **274 homes in neighborhood	Not in town, Single and Paired Villas Laurelton, Sections2-5 (83 lots) Mid-\$200s, Approved 3/21 *** 289 homes in neighborhood	Not in town, Single Home Sonora Sections 5-7 (127 lots), \$220- 400K Recommended 9/2021 **274 homes in neighborhood	Not in town, Single Laurelton, Section 6 (49 lots) Mid-\$200s, Request 4/22 *** 289 homes in neighborhood
Cardinal	Not in town, Single Homes Heritage Hills (Annndale and Hampton) 147 Homes, mid to upper \$200K Approved 5/13/19	In town, Single Homes Phillips Manor 70 homes, \$330K \$410K Approved 8/21	Not in town, Single Home Parkside at Greystone, Section 1 49 homes, \$300K Approved 11/21 93 homes in neighborhood					
Delaware Trail	Not in town, Single Home Greystone, Section 1 85 homes, \$280K Approved 10/2019 **200 homes in neighborhood	Not in town, Single Home Greystone, Section 2 31 homes, \$280K Approved 9/2020 **200 homes in neighborhood	Not in town, Single Home Brentwood 38 homes, \$400K Approved 1/21	Not in town, Single Home Greystone, Section 3 39 homes, \$280K Approved March 2021 **200 homes in neighborhood	Not in Town, Single Home Fairview, Section 1 (41 homes) \$300K - \$400K, Approved 3/2022 137 homes in neighborhood			
Eagle								
Lincoln	In town, Apartments Union Green 125 1B/1B, 47 2B/2b Approved 10/18	Not in town, Single Home Emerald Park 72 homes, \$280K Approved 12/18	In Town, Single Home Beacon Pointe (East) 62 homes, \$290K Approved 12/18	Not in town, Single Home Belle Arbor, Section 1 43 lots, \$272K Approved 11/19 ***170 lots in neighborhood	Not in town, Single Home Belle Arbor, Section 2 42 lots, \$272K Approved 11/20 ***170 lots in neighborhood	Not in town, Single Home Belle Arbor, Section 2 42 lots, \$272K Approved 3/21 ***170 lots in neighborhood	Not in town, Single Home Belle Arbor, Section 4 43 lots, \$272K Approved 11/21 ***170 lots in neighborhood	
Reagan	In town, Apartments Elmwood by Redwood, 2nd section, 44 2 bdr units Approved 10/2020							
White Lick	Not in town, Single Home Cadence 92 homes, \$230K Approved 1/19/19							

Elementary Feeder Configuration

Crossroads Elementary will become part of the elementary feeder configuration. Part of this committee's work will be to determine any changes needed to the feeder pattern. It will be important to keep in mind the impact of walking areas at both the elementary and middle school.



Map of BCSC Campus with Walking Areas



Check In

- At your table discuss the information that was just shared.
- What take aways do you have from the information shared?
- How does the information shared impact redistricting?



Discussion

- If you had to pick just one, how do you believe most parents would respond and why?
 - My elementary school is the best in BCSC.
 - My elementary school is great – just like all the other elementary schools in BCSC.



School and District Performance

At your table, take a minute to discuss this question:

- What are the top 3 public school districts in the state (based on ILearn)?
 - Brownsburg Community School Corporation
 - Carmel Clay Schools
 - North Spencer County School Corporation



ISTEP – Historical Data

Out of 292 Public School Corporations...

- 2009 – 2010 BCSC ranked 22nd
- 2010 – 2011 BCSC ranked 16th
- 2011 – 2012 BCSC ranked 5th
- 2012 – 2013 BCSC ranked 5th
- 2013 – 2014 BCSC ranked 6th
- 2014 – 2015 BCSC ranked 3rd
- 2015 – 2016 BCSC ranked 1st
- 2016 – 2017 BCSC ranked 1st
- 2017 – 2018 BCSC ranked 1st
- 2018 – 2019 BCSC ranked 1st
- 2019 – 2020 No Test due to CV-19
- 2020 – 2021 BCSC ranked 1st
- 2021 – 2022 BCSC ranked 1st



Student Enrollment

School	2013-2014* 9.13.13	2014-2015 9.12.14	2017-2018* 9.15.17	2018-2019 9.14.18	2022-2023* 8.17.22
Brown Elementary	543	649	733	617	750
Cardinal Elementary	505	623	594	579	545
Crossroads Elementary	N/A	N/A	N/A	N/A	N/A
Delaware Trail Elementary	480	610	638	605	589
Eagle Elementary	795	629	748	656	588
Lincoln Elementary	N/A	N/A	N/A	508	651
Reagan Elementary	667	617	680	577	567
White Lick Elementary	582	579	601	579	662
Brownsburg East MS	1,155	1,034	1,070	1,169	1,336
Brownsburg West MS	757	913	985	903	1,035
Brownsburg High School	2,299	2,292	2,528	2,651	3,023



*Indicates the year prior to redistricting

Average Class Size, Grades K - 8

	Preferred Size	2013-2014*	2014-2015	2017-2018*	2018-2019	2022-2023*
Kindergarten	18 - 22	21.1	18.8	19.6	20	19.7
1st	18 - 22	20.2	19.4	20.6	20.1	20.3
2nd	18 - 22	20.4	19.4	19.7	20	18.8
3rd	22 - 26	21.1	22	22.2	22.2	22.2
4th	22 - 26	21.9	22.3	23.2	24	22.5
5th	22 - 26	22.9	23.3	23.6	24.3	22.4
6th	24 - 28	28.4	26.5	27.5	27.7	26.3
7th	24 - 28	27.3	27.8	25.7	26.2	24
8th	24 - 28	25.3	24.5	23.8	26.3	25.9



*Indicates the year prior to redistricting

School Size and Special Programs

	Number of Classrooms	Special Programs
Brown	33	Life Skills
Cardinal	30	0
Crossroads	33	0
Delaware Trail	30	Emotional Disability
Eagle	33	0
Lincoln	33	0
Reagan	30	0
White Lick	30	Bridge

The classrooms used for the Life Skills, ED, and Bridge programs are not included in the classroom counts.



Desired School Size

5 Kindergarten Classrooms – 20 students x 5 = 100 students

5 First Grade Classrooms – 20 students x 5 = 100 students

5 Second Grade Classrooms – 20 students x 5 = 100 students

4 Third Grade Classrooms – 25 students x 4 = 100 students

4 Fourth Grade Classrooms – 25 students x 4 = 100 students

4 Fifth Grade Classrooms – 25 students x 4 = 100 students

(10 per grade level in the 2/3 and 4/5 high ability program)

This would put all our elementary schools at roughly 640 students.

An enrollment of 640 students allows for related arts programming, lunchroom capacity, and media center capacity to operate within desired limits.



Check In

- At your table discuss the information that was just shared.
- What take aways do you have from the information shared?
- How does the information shared impact redistricting?



Balancing Poverty Rates/SES

- The district average was 21.42% in 2017. The district average is currently 31.75%.
- The committee's goal will be to redistrict neighborhoods so that all schools are closer to the district average. Our goal is to be +/- 3% of the district average.
- The desired range would then be 28.75% - 34.75%.



* As students enter high school, fewer families apply for lunch/textbook support.

School	2022 - 2023 Percentages
Brown	34.67%
Cardinal	30.64%
Delaware Trail	25.98%
Eagle	26.19%
Lincoln	34.25%
Reagan	34.39%
White Lick	27.95%
BEMS	32.04%
BWMS	36.43%
BHS	30.43%*
District Total	31.75%

Balancing Racial Diversity

- The difference between the highest and lowest diversity percentages at our schools (comparing elementary schools) is currently 17.14%.
- Our goal would be that any movement of students would cause the diversity rates in our schools to move closer to the district average.

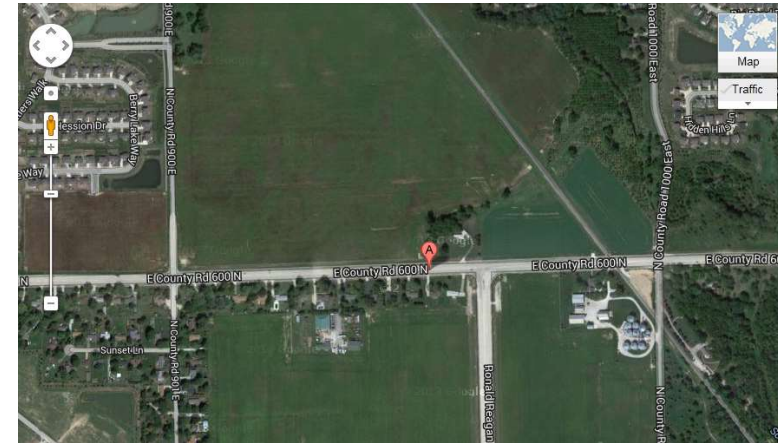


School	2022 - 2023 Percentages
Brown	41.87%
Cardinal	25.87%
Delaware Trail	29.20%
Eagle	31.46%
Lincoln	43.01%
Reagan	35.45%
White Lick	35.05%
BEMS	35.55%
BWMS	35.07%
BHS	34.24%
District Total	34.95%

Neighborhood Information

County Roads

- There are several homes in BCSC not located within a neighborhood. These are homes that are typically found on county roads. These “no neighborhood” areas send us approximately 192 students in K – 5. Kadams.
- Some homes on county roads are right next to a neighborhood. When homes are located on county roads near neighborhoods, we have included these homes as part of the neighborhood for the purpose of transportation.



Neighborhood Information

Walking Neighborhoods

- All or parts of the neighborhoods shown below are considered walking neighborhoods. School bus stops have been established so that an authorized vehicle stop is available within reasonable walking distance of the home of a student entitled to transportation services. These stops are scheduled and located not less than one-half (1/2) mile from the entryway to that route's school.
- For financial reasons, it is important to keep walking areas. This will require us to look at walking areas for elementary and middle schools. These walking areas include:

Brown

- Ashwood Estates
- Country Walk
- Meditch Stadium Hts.
- Prairie Village

Cardinal

- Bersot Crossing*
- Holiday Pines*
- Lincoln Point*
- Thornburg*

Delaware Trail

- Meadow Chase*
- ### **Eagle**
- Sugar Bush North
 - Cedar Run
 - Chadwick Village

Lincoln

- No walking neighborhoods

Reagan

- Hornaday Heights*
- Ironwood*
- Creekside Commons*

White Lick

- Brownswood*
- Hunters Cove*
- Sugar Bush South*

Brownsburg East

- Beacon Point
- Fairfield Heights

*Both elementary and middle school

Neighborhood Information

Large Neighborhoods

- In the Redistricting of 2017, we divided neighborhoods with more than 70 students in grades K – 5. The decision to divide large subdivisions was made by the committee. At that time, we had 14 neighborhoods with more than 70 students in K – 5. Of those large neighborhoods, the committee's recommendation resulted in only two neighborhoods being divided: Lake Ridge and Branches. Those two neighborhoods are now 4 neighborhoods: Lake Ridge East, Lake Ridge West, Branches East, Branches West.
- Some neighborhoods were divided outside of the redistricting process based on how the developers phased the neighborhoods: Clermont Lakes North, Clermont Lakes South, Austin Winds North, Austin Winds South, Wynne Farms East, Wynne Farms West
- One neighborhood was divided when Eagle Elementary opened in 1993: Sugar Bush South and Sugar Bush North



Neighborhood Information Large Neighborhoods



- The map on the left shows the sections, as determined by the builder, of Lake Ridge.
- The sections were grouped to subdivide the neighborhood.
- The Redistricting Committee's recommendation divided the neighborhood between two schools.
- The boundaries are shown in the map to the right!



Neighborhood Information

Large Neighborhoods 2022

- We currently have 15 neighborhoods with more than 70 students in K – 5.
- *These are divided neighborhood sections that were divided for the 2017 Redistricting. Even divided, some of the sections are on the list for 2022 Redistricting.
- Thornburg, Creekside Commons, and Bersot Crossing all include walking sections.

Bersot Crossing	Highland Springs	Summer Ridge
Branches East*	Lake Ridge West*	Tallgrass
Branches West*	Laurelton	Thornburg
Creekside Commons	Silverleaf	Williamsburg
Hession Fields	Sonora	Wynne Farms E



Large Neighborhoods

- These neighborhoods will be divided into smaller divisions based on the section numbers used by the developers.
 - If a neighborhood is in a walking area, the neighborhood would not be divided if it could not be a walking area to more than one school.
- At our next meeting, these divisions will be shared.
- One challenge to consider will be neighborhoods that are still being built that may not be at the 70-student count yet but are likely to have more than 70 students.
 - Greystone (56 students/200 homes), Belle Arbor (44/170), Fairview (0/137)



Movement of Students

	8/17/22 Enrollment	Desired Size	Difference (approx.)
Brown	750	+/- 580	- 170
Cardinal	545	+/- 520	- 25
Crossroads	0	+/- 580	+580
Delaware Trail	589	+/- 520	- 70
Eagle	588	+/- 580	- 10
Lincoln	651	+/- 580	- 70
Reagan	567	+/- 520	- 50
White Lick	662	+/- 520	- 140
Total	4352	4400	



Home School Placements

- Currently, there are students attending schools that are not their home school. These typically fall into one of two categories:
 - Students with disabilities and their siblings: Students and the siblings of students who participate in special education programming only offered at specific buildings will not be returned to their home school unless they elect to do so.
 - Stay Put Students: At the end of the 2021-2022 school year, it was decided students who had moved within the BCSC boundaries could stay at their current school if their parents/guardians provided transportation. This was offered as we knew redistricting was scheduled and could impact these students with multiple moves. These students will move to their new school for the start of the 2023-2024 school year.
 - Out of District Students: This is a new group since the last redistricting. This includes students who previously lived in BCSC but have moved and students who applied to attend BCSC from another district. Movement of these students can help us tweak enrollment. (71 are elementary students or 1.6% of elementary students)



Check In

- At your table discuss the information that was just shared.
- What take aways do you have from the information shared?
- How does the information shared impact redistricting?



Miscellaneous Topics

Redistricted Families and 5th & 8th Grade

- Students who were in kindergarten when the last redistricting was completed (if they were redistricted, the move would occur when they went to 1st grade), will enter 6th grade for the 2023-2024 school year.
 - **This means no child, unless retained, would have been redistricted twice during elementary school.**
 - **Families with multiple children could be impacted by the 2014, 2017, and the upcoming redistricting.**
- During the 2014 and 2017 redistricting, students who were redistricted and would be entering 5th or 8th grade were allowed to remain at their current school. Parents were required to provide transportation, younger siblings were required to move to new school, students with poor attendance would move to new school.



Redistricting Timeline

- **May 2022** – Invitation in newsletters to participate in Redistricting Committee
- **September 1, 2022** – Redistricting Meeting #1
- **September 29, 2022** – Redistricting Meeting #2
- **October 27, 2022** – Redistricting Meeting #3
- **November 17, 2022** – Redistricting Meeting #4
- **November 28, 2022** – Redistricting Community Update (Tentative)
- **December 8, 2022** – Redistricting Meeting #5
- **December 12, 2022**– Recommendation for Board Approval
- **January 20, 2023** – Parent Notification
- **January 24, 2023** – Elementary Principal Meeting, Preliminary impact shared
- **February 10, 2023** – Parents of 5th and 8th grade student commitments due (Tentative)
 - 2nd grade HA numbers plugged in
 - Student enrollment numbers updated
 - 5th grade and 8th grade stay put updated
- **February 14, 2023** - Principal Meeting to share teacher impacts
- **February 15, 2023** – Teachers receive information during PLC
- **February 24, 2023** – Requests are due (teacher placement)
- **February 27, 2023** – Jim, Kat, and Jodi have preliminary teacher placement meeting
- **March 17, 2023** – Teacher placement notification



Committee Members

- Committee members who will vote on the final plan must be parents/guardians of BCSC students.
- School employees who are participating members of the committee will vote if they have students in PK – 8th grade attending BCSC schools.
- Administrators who are participating members of the committee will vote if they have students in PK – 8th grade attending BCSC schools.



Facts and Myths

- There will be fewer students attending Lincoln and Brown Elementary next year than attend this year.
- Poverty and diversity levels at the elementary schools in Brownsburg are identical.
- Decisions about redistricting have already been decided by BCSC – this committee is just for show.
- Redistricting is going to be a very easy process.
- It is appropriate to share information with friends and family about what you have learned today.



Parameters to Consider for Redistricting

1. Consider the financial impact so that we can drive as much money as possible into classrooms (keep class sizes small).
2. Impact the fewest number of families while achieving desired enrollment numbers.
3. Equalize poverty rates in each school.
4. Maintain a representation of our community of the racial diversity in each school.
5. Create new classes within the parameters previously shared.
 - Kdg – 2nd Grade: 18-22 students
 - 3rd – 5th Grade: 22-26 students
 - 6th – 8th Grade: 26-28 students
6. **When all else fails – go back to parameter #1**



Key Redistricting Questions to be Considered

Based on these parameters:

1. What elementary schools should attend West Middle School and what elementary schools should attend East Middle School?
2. How should the northern tier be reconfigured?
3. In what other areas should adjustments be made that will work within the parameters set forth?



Committee Member Responsibilities

- When asked about the work of the Committee by neighbors, other parents, people at the ball fields – be honest! Let them know about the work of the group and encourage them to come to the Community Meeting on November 28th
- When you hear people talking about redistricting and they are sharing incorrect information, let them know what you know.
- If you have gained new knowledge tonight that others will find interesting... share it!



Next Meetings

All meetings will be held on Thursday evenings at 6:30. Meetings will take place in the Board Room.

- September 29
- October 27
- November 17
- December 8

Attendance at all meetings is a very important part of the process.



If you have questions, ask!

Jim Snapp

jnapp@brownsburg.k12.in.us

317-852-5726 (work)

317-509-5753 (cell)

Kat Jessup

kjessup@brownsburg.k12.in.us

317-852-5726 (work)

317-441-5711 (cell)

