

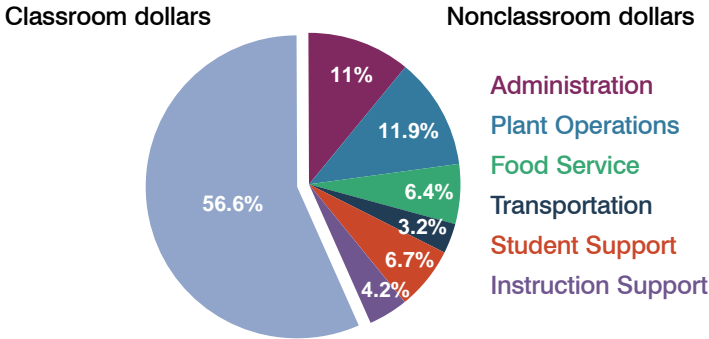
Buckeye Elementary School District

Maricopa County
Peer groups: Efficiency Group 9, Achievement Group 13
Legislative district(s): 4, 12 and 25

District size: Medium-Large
Students attending: 4,140
Number of schools: 7

OPERATIONAL EFFICIENCY

Spending by operational area

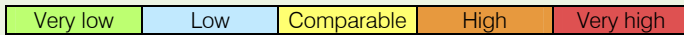


5-year trend

Total spending per pupil increased by 22 percent. Spending in the classroom was very inconsistent year to year, decreasing significantly overall from 60.3 to 56.6 percent. Spending on plant operations and student support increased, while spending on other nonclassroom areas varied year to year.

District's cost measures relative to peer group

Operational Area	Measure	District	Peer Average	State Average
Administration	Cost per pupil	\$725	\$828	\$728
	Students per administrator	88	72	66
Plant Operations	Cost per square foot	\$6.23	\$6.46	\$6.10
	Square footage per student	125	132	152
Food Service	Cost per meal equivalent	\$2.55	\$2.30	\$2.45
Transportation	Cost per mile	\$3.42	\$5.00	\$3.39
	Miles per rider	194	136	283



Per-pupil spending by operational area

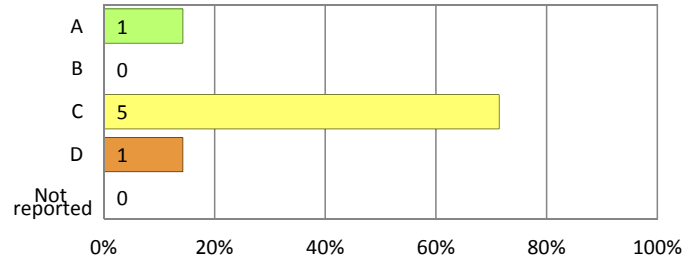
	District		Peer 2011	State 2011	National 2009
	2010	2011			
Total	\$6,636	\$6,574	\$7,334	\$7,485	\$10,591
Classroom dollars	\$3,675	\$3,718	\$3,806	\$4,098	\$6,456
Nonclassroom dollars:	\$2,961	\$2,856	\$3,528	\$3,387	\$4,135
Administration	778	725	828	728	1,147
Plant Operations	711	781	854	927	1,033
Food Service	390	424	507	375	404
Transportation	218	214	268	352	443
Student Support	526	438	554	571	573
Instruction Support	338	274	517	434	535

STUDENT ACHIEVEMENT AND TEACHER INFORMATION

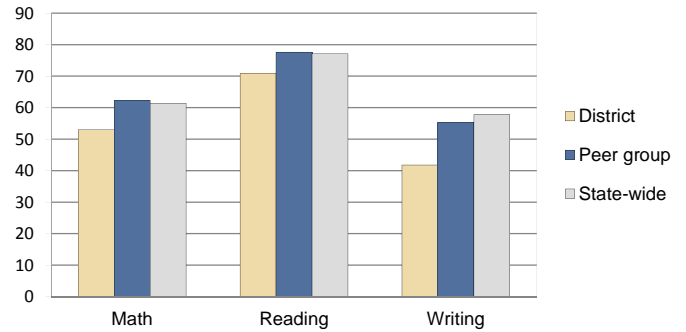
District and school letter grades

District grade: **C**

School grades (number and percentage):



Percentage of students meeting state standards (AIMS)



Student and teacher information

Measure	District	Peer Average	State Average
Attendance rate	93%	95%	95%
Graduation rate (2010)	N/A	N/A	N/A
Poverty rate (2010)	17%	14%	22%
Students per teacher	18.2	18.7	18.1
Average teacher salary	\$39,821	\$42,467	\$45,637
Average years of experience	5.4	7.8	10.9
Percent of teachers in first 3 years	45%	27%	16%

Proposition 301 pay, goals, and results

Average additional salary earned by teachers: \$2,086

Type of goal	Goal met?
Student achievement	■
Dropout/graduation rates	-
Student attendance	-
Parent/student satisfaction	-
Teacher attendance	-
Teacher professional development	■
Teacher evaluations	-
Tutoring	-
Other	■

■ = yes, □ = no, ▴ = partially, and - = no goal set