



# THE TWAIN TIMES



## Mark Twain Elementary

Vicki Moss      Principal  
Susan Kaul      Secretary  
Kelley Knapp      Attendance  
Jessica Gilbert      School Nurse  
Sam Cox      Health Aide  
Serena Casale      School Counselor

## NOVEMBER 2019

### Important Dates To Remember...



Picture Re-take Day	11/01
PTA Craft Bazaar	11/02
WE Day NO SCHOOL	11/05
PTA Skating Party	11/07
Early Release 2:30 p.m.	11/14
Interim Reports Distribution	11/18
PTA Meeting @ 7:00 p.m.	11/18
Thanksgiving Break NO SCHOOL	11/27 through 11/29

### LOST AND FOUND

Are you missing a shoe, a lunch box or a coat? Please remember to check the Lost and Found for misplaced items before the end of the month. All unclaimed items will be donated to W.A.R.M.

### Updated Phone Numbers

Please note that we are required by law to have **two working phone numbers** for every student. Please provide us with any updated information as it changes.



## SUPPORTING MARK TWAIN!

We are so appreciative to have such wonderful and supportive families! Thanks to your support, our PTA is able to provide for the school in many ways, such as funding Field Trip Transportation, Assemblies, Classroom Materials, Family Events, Student Incentives/Rewards, Enrichment Programs, Clubs, School Directories, T-Shirts, Playground Maintenance, Summer Reading programs, and much more. In addition to our Walk-a-thon and our Craft Bazaar, we also depend on the rewards programs below to help as well.

Please consider taking a few minutes to link some of your shopping rewards cards to Mark Twain. These are super easy ways we can earn money and classroom supplies for our school!!

### EASY (and Free) WAYS TO SUPPORT MARK TWAIN

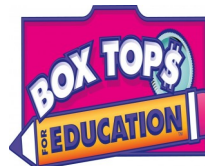
**CUT OUT & SAVE BOX TOPS!** - (ask family and friends too) There will be contests throughout the year - more info. to come.. just keep collecting! We earned over \$1800.00 last year!!

**SAVE POP CAN TABS!** Leadership Summit collects them to donate to The Ronald McDonald house year round. They can be turned into the office in ziplock bags anytime.

**TARGET CREDIT CARD (REDcard)** - Target donates 1% of all sales on this card to schools. Link it to Mark Twain by visiting [www.target.com/tcoe](http://www.target.com/tcoe) and enter Mark Twain or ID# 83502 (questions to 1-800-316-6142)

**MEIJER 1 REWARD CARD (or Meijer credit card)** - Earns money for our school. The Meijer 1 Card<sup>SM</sup> is a Meijer store customer card used for Community Rewards when you make purchases with cash or your PIN-debit card. The Meijer 1 Card<sup>SM</sup> is not a credit card. You can also link your Meijer credit card. To choose your card options to link or order a reward card visit [http://www.meijer.com/mcr/choose\\_card.jsp](http://www.meijer.com/mcr/choose_card.jsp) or 1-800-962-7011. Our School Code 433045.

**KROGER COMMUNITY REWARDS**— If you shop at Kroger, you can link your Kroger Plus card to Mark Twain NPO #84372/ For more information, visit [www.kroger.com/mykroger/016/community/Pages/community\\_rewards.aspx](http://www.kroger.com/mykroger/016/community/Pages/community_rewards.aspx). You must re-enroll for Kroger Rewards every April



## MARK TWAIN ATTENDANCE

### Clinic News

**HELP US KEEP OUR KIDS HEALTHY! GUIDELINES FOR SENDNG AND KEEP-  
ING KIDS HOME:**

1. fever of 100 degrees or higher
2. vomiting
3. diarrhea
4. undiagnosed/suspicious rash or head lice

If your child is home with a fever, he or she needs to be fever free for 24 hours **without the help of fever reducing medicines** before returning to school.

If your child is placed on an antibiotic, they need 24 hours of the medicine before returning to school.



**MARK TWAIN STAFF**  
wish all of you a  
**Very Happy Thanksgiving!**



### THANKSGIVING MEAL

Tender Diced Turkey and Gravy  
Creamy Mashed Potatoes  
Seasoned Green Beans  
Whole Wheat Dinner Roll  
Iced Cold Milk

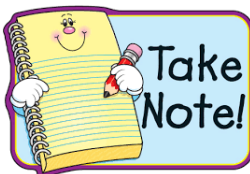
**Tuesday**  
**NOVEMBER 26th**



### SCHOOL SAFETY

#### ID NEEDED WHEN VISITING MARK TWAIN

Safety is our highest priority at Mark Twain Elementary School. For the safety of our staff and students, all school visitors are required to bring identification to the school. Upon arrival at Mark Twain, please ring the doorbell at the front entrance of the building. When a staff member greets you, have your state issued license ready to hold up to the camera. Once your information has been verified you will be permitted to enter. Even if you are well known by the office staff you will be asked to follow this procedure. When you enter the building you are required to report directly to the office to sign-in. You must initially fill out the Volunteer Statement form. If you plan to visit an area with students, additional safety measures will be addressed. A new system, Raptor, has been implemented at your school. With this system, all volunteers and visitors will be asked to place their license into the Raptor machine. The machine will print a sticker ID that must be worn while you are in the building. Please contact the school office if you have any questions. Thank you in advance for following these safety measures.



### NO SCHOOL.....

November 8—WE day and Election day

November 27, 28, and 29th—Thanksgiving Break



## MARK TWAIN REMINDERS AND REALLY USEFUL INFORMATION!

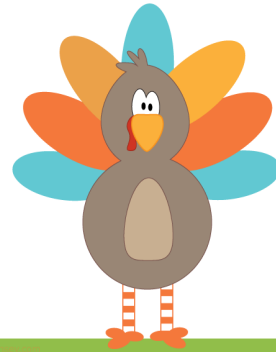


**Attendance:** A Pre-excused Absence Form **MUST** be completed prior to any absence. The forms are available in the hallway on the literature rack or online. Please obtain a form, complete the required information and turn it in to your student's teacher to be signed. **It is the student's responsibility to obtain any homework assignments during the absence.**

**Homework Requests:** All homework requests must be called in to the Mark Twain Office (797-7200) no later than 10:00 am for same day pick up. Work will be available at the end of the school day in the office.

**Late to school:** If your student is late you will need to accompany them to the office and sign them into school.

happy  
thanksgiving



### BRRRR...DRESS FOR THE WEATHER!

With the cold weather coming soon, this is a reminder that **children will go outdoors for recess** if it's not raining and the temperature is 20 degrees F or above, including wind chill. Children should wear appropriate seasonal clothing (boots, hats, gloves) for playground activities. A reminder from the clinic, if your child is attracted to the mud, please send a change of clothes in their backpacks.



## ATTENTION LUNCH MONEY

Please check your student's lunch account to be sure they have sufficient funds for purchasing lunch. Lunch is \$2.75, reduced \$.40 and breakfast is \$1.25. An extra entree is \$1.25 and milk is \$.60. Please have your student bring any cash/checks to the office in the morning for deposit into their account. Remember that EZ-Pay is available if you wish to use a credit card to put money on your student's lunch account.



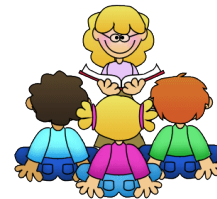
## DAY LIGHT SAVINGS TIME

November 3rd



### KINDERGARTEN TUITION

Tuition for all day kindergarten is due on the 1st of each month. Checks are to be made payable to Westerville City School or by using the EZPAY system.





## NEWS AND INFORMATION



The Mark Twain Craft Bazaar is one of the most highly anticipated holiday bazaars in Westerville. As it enters into its 35th year, the Mark Twain Craft Bazaar has grown to include over 140 unique artists from throughout Ohio and welcomed over 2,000 patrons last year. All items are beautifully hand crafted items.

The annual Craft Bazaar is also the most profitable event sponsored by the Mark Twain Parent Teacher Association. Last year's Bazaar generated over \$10,000 for our children. All proceeds directly benefit the students of Mark Twain Elementary School, allowing our students to enjoy cultural field trips, artists in the schools programs, and various other activities to enrich their learning experiences.

This year's Craft Bazaar will be held on Saturday, November 2, 2019 from 10:00 am-3:00 pm. The event will take place at Westerville North High School, located at 950 County Line Road, Westerville, OH 43081. We hope to see you there!

VOLUNTEERS ARE NEEDED!

Like us on Facebook! [www.facebook.com/MarkTwainCraftBazaar](https://www.facebook.com/MarkTwainCraftBazaar)

**TODAY**  
*is the day to*  
*learn something*  
**NEW**

### PTA SKATE NIGHT

SKATE ZONE 71

Thursday, November 7th

6:00— 8:30 PM

FREE ADMISSION

\$3.00 SKATE RENTAL

\$4.00 ROLLER BLADE RENTAL

This is not a drop off activity. Parents must accompany their children!



### DON'T FORGET!

**PTA Meeting**

Media Center

Tuesday, November 29th @ 7:00 pm

Be sure to visit the Mark Twain PTA website ([mtpta.org](http://mtpta.org)) for all the current information about what's happening with your PTA and to find out how you can participate in the Mark Twain PTA.

### STUDENTS HAVE BUSY DAYS!

Students need lots of rest. Make sure your child goes to bed early so they are well rested and ready for a busy day at school.

