



THE TWAIN TIMES



Mark Twain Elementary

Vicki Moss Principal
Susan Kaul Secretary
Kelley Knapp Attendance
Jenna Martin School Nurse
Feven Woldeab Health Aide
Serena Casale School

MARCH 2022

Attendance: 797-7213

Important Dates To



PTA Skate Night 6-8:30 p.m.	03/03
Daylight Savings Time begins	03/13
4th Grading period begins	03/14
St. Patrick's Day	03/17
Achievement Records available	03/18
PTA Meeting @ 7:00 p.m.	03/22
Spring Break NO SCHOOL	03/28 thru 04/01



MARCH



NEW SCHOOL COVID GUIDELINES

Any student identified as a close contact to a positive case within their household may continue to attend school as long as the student does not develop any symptoms or test positive. These close contact students previously were required to remain at home for a minimum of five days. COVID testing is not required unless the student develops symptoms. Any identified household close contact(s) should also wear a mask while at school for 10 days after the last date of contact with the positive case.

Any student who develops COVID-like symptoms must remain at home. Per current exclusion requirements from ODH and FCPH, a student with symptoms will be required to stay at home regardless of their vaccination status, history of previous infections, and/or whether or not they were identified as a close contact. Students at school who display COVID-like symptoms will be sent home. A student with COVID-like symptoms may return to school after:

- Providing documentation of a negative COVID test (proctored if a home test), or
- Obtaining a note from a medical provider indicating an alternate diagnosis, or
- Remaining home 5 days from symptom start date

Please continue to notify the COVID nurse line (614-797-5711 or wcsd-nurse@wcsd.org) with any positive student cases and to discuss a return to school date. COVID-positive students will be required to stay home at least 5 days from the symptom start date (positive test date if no symptoms). Afterwards, per ODH and FCPH, the student may return on or after day 6 only if the following conditions are met:

- Their symptoms are improving,
- They have been fever-free for at least 24 hours without using fever-reducing medication, and
- They wear a mask at all times through day 10 (day 6-10) while at school.

That last point is very important. Despite our transition to the wearing of masks being optional, any student who returns to school after testing positive MUST wear a mask at all times through day 10 while at school, except for those times where its removal is permitted, such as while eating lunch and during mask breaks. Identified household close contact (s) should also wear a mask while at school 10 days after the last date of contact with the positive case. Please know that our nurses will continue to help families navigate a student's return to school in the event they test positive for COVID.

We will continue to monitor local and regional health data to determine any potential impact that improving or worsening conditions may have on our COVID mitigation strategies. Nurses will continue current COVID notification practices and positive case rate data will remain available on our website. Any future changes to our COVID mitigation strategies or practices will be communicated as they become known.

MARK TWAIN NEWS



DISTRICT MAGNET PROGRAM

2022-2023 Information

Westerville City Schools offers Magnet Programs at Hanby and Emerson. Each building has a unique focus:

Hanby provides learning experiences that focus on Math, Science, and the Arts.

Emerson focuses on World Cultures.

Students enrolled in Westerville City Schools are eligible to participate in the Magnet program and their selection to the program is determined by a lottery process. **Students must complete enrollment in Westerville City Schools with an Enrollment Specialist no later than March 25 to be eligible for the lottery.**

Please review the following information carefully.

Magnet Program Options

- The Magnet Program consists of three options: Math/Science, World Cultures, and Arts.

Magnet Program Locations

Emerson Elementary hosts the World Cultures program, while Hanby Elementary hosts the Arts program and the Math/Science program.

Questions regarding the Math/Science Magnet Program or the Arts Magnet Program at Hanby please call Principal Megan Rose Forman at 614.797.7100 or email her at formanm@wcsch.org.

Questions regarding the World Cultures Magnet Program at Emerson please call Principal Chris Poynter at 614.797.7080 or email him at poynterc@wcsch.org.

Magnet Program Applications and Lottery

- Parents will have the option to complete an online application for the 2022-2023 school year.
Magnet Program Timeline for 2022 Lottery

Tuesday, March 1 - Application available online at 9:00 a.m.

Wednesday, March 16 - Magnet Fair and Open House

- Emerson, 5:30-6:30 p.m.
- Hanby, 6:00-7:00 p.m.
- **Friday, March 25** - Application Deadline is 4 p.m. New students must complete enrollment with an Enrollment Specialist.
- **Friday, April 8** - Invitation Letter mailed home
- **Friday, April 15** - Acceptance of Invitation due by 4 p.m.

Clinic News

STUDENTS, WHAT DOES MASK OPTIONAL MEAN FOR YOU?



While on a school bus or district van

You must continue wearing a mask when you're riding on a school bus or in a district van. This isn't our local rule, but it's something that's required across the country for a little while longer.



While at school

If you want to continue wearing a mask, it's perfectly fine.
If you decide not to wear your mask or only want to wear it at certain times, that's fine, too.



While eating

You can keep your mask off when you eat breakfast or lunch at school, just like you've been doing all year.



While close to other

We'd still like you to think about wearing your mask when you're going to be indoors and really close to others for a long period of time.



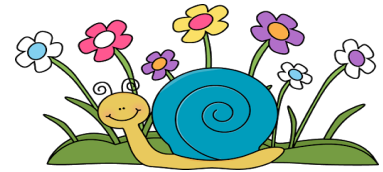
Talk to your parents or guardians

Most importantly, ask your parents or guardians about masking up while you're at school!

www.WCSOH.org | February 2022

WCSD COVID-19 NURSE HOTLINE

614-797-5711



Mark Twain Elementary School Hours

9:05AM - 3:30 PM

Please do not drop your students off early.
Students may not enter the building until the 8:50 morning bell.

PARKING REMINDER FROM WESTERVILLE POLICE

Good afternoon parents,

The Westerville Police is receiving complaints concerning cars being parked on Chelsea Lane which is a no stopping zone. The police have advised that they will begin giving tickets for cars parked on Chelsea Lane and to drivers making a left turn onto Walnut during the posted arrival (8:45 - 9:00 AM) and dismissal times (3:30 - 3:45 PM). Thank you for your attention to this matter. Please call Westerville City Police if you have any questions.

DAYLIGHT SAVINGS TIME



Sunday, March 13th

NEWS AND INFORMATION

YWCA Kids Place Summer Day Camp

REGISTRATION OPENS MARCH 7 AT 10 AM



Need a break? Get some actual rest this summer and send your kids to our all-inclusive day camp where they'll have fun and learn something with weeks packed full of enriching experiences, field trips, and time with friends.

YWCA Columbus Kids Place Summer Day Camp is ready for another safe, fun summer, with over 20 years of experience offering high-quality summer programs for campers grades K-7—from any school district.

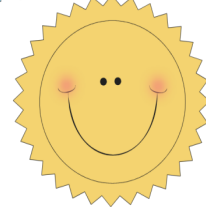
Our ODJFS-licensed program, expert staff, and flexible scheduling make our program the best choice to make your child's summer amazing. Scholarships are available for qualified families.

All-Inclusive, All-Day Care

Our YWCA Columbus Kids Place Summer Day Camp will run from June 6 through July 29, 7:00 AM - 6:00 PM each weekday.

YWCA Summer Kids Place is ready for a safe, fun summer!

Fun in the Sun



hello
spring!



SPRING BREAK

March 28th through April 1st
Classes resume on Tuesday, April 4th

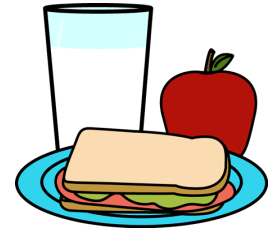
USEFUL INFORMATION

NEWS FROM FOOD SERVICES

WCSD TO COVER EZPAY CONVENIENCE FEES

Starting Feb. 1, Westerville City Schools will cover the \$2.75 convenience fee currently paid by parents per transaction when using the EZPay online system to take care of student fees, activity fees, school meals and other fees.

"The decision to cover this fee is the latest of several measures the district has taken in recent years to decrease school-related costs for families," Treasurer/CFO **Nicole Marshall** said. "Our hope is that this will allow more families to take advantage of this convenient online payment system. We will continue to look for ways to reduce expenses for our families while remaining fiscally accountable to our taxpayers and community."



Westerville families can learn more about summer camps and activities for their kids through the Westerville Parent Council's (WPC) annual Summer Camp Expo 11 a.m. - 2 p.m. March 19 at Westerville North High School, 950 County Line Road.

The event will feature food trucks, business vendors and to-go info bags about summer opportunities for kids of all ages.

The expo serves as WPC's largest fundraiser. Proceeds support scholarships for the Class of 2022.

MARK TWAIN SCHOOL SKATE PARTY

Thursday, March 3rd

6:00—8:30 pm

Free admission

\$3.00 Skate Rental



Westerville elementary students are invited to submit a theme for the Rotary Club of Westerville's 2022 Independence Day Parade.

The winning student will receive \$100 and can ride on the Rotary's float in the big parade with a friend or family member. Classes with 100% participation in the theme contest will be entered into a drawing to win a classroom pizza party.

Students can fill out an entry form with their patriotic theme submission [here](#). They can submit their forms to their school principal by Friday, March 11.

The Rotary Club The 2020 and 2021 parades were canceled due to the pandemic but will resume this summer. The 2019 winning theme was "Home of the Free Because of the Brave."