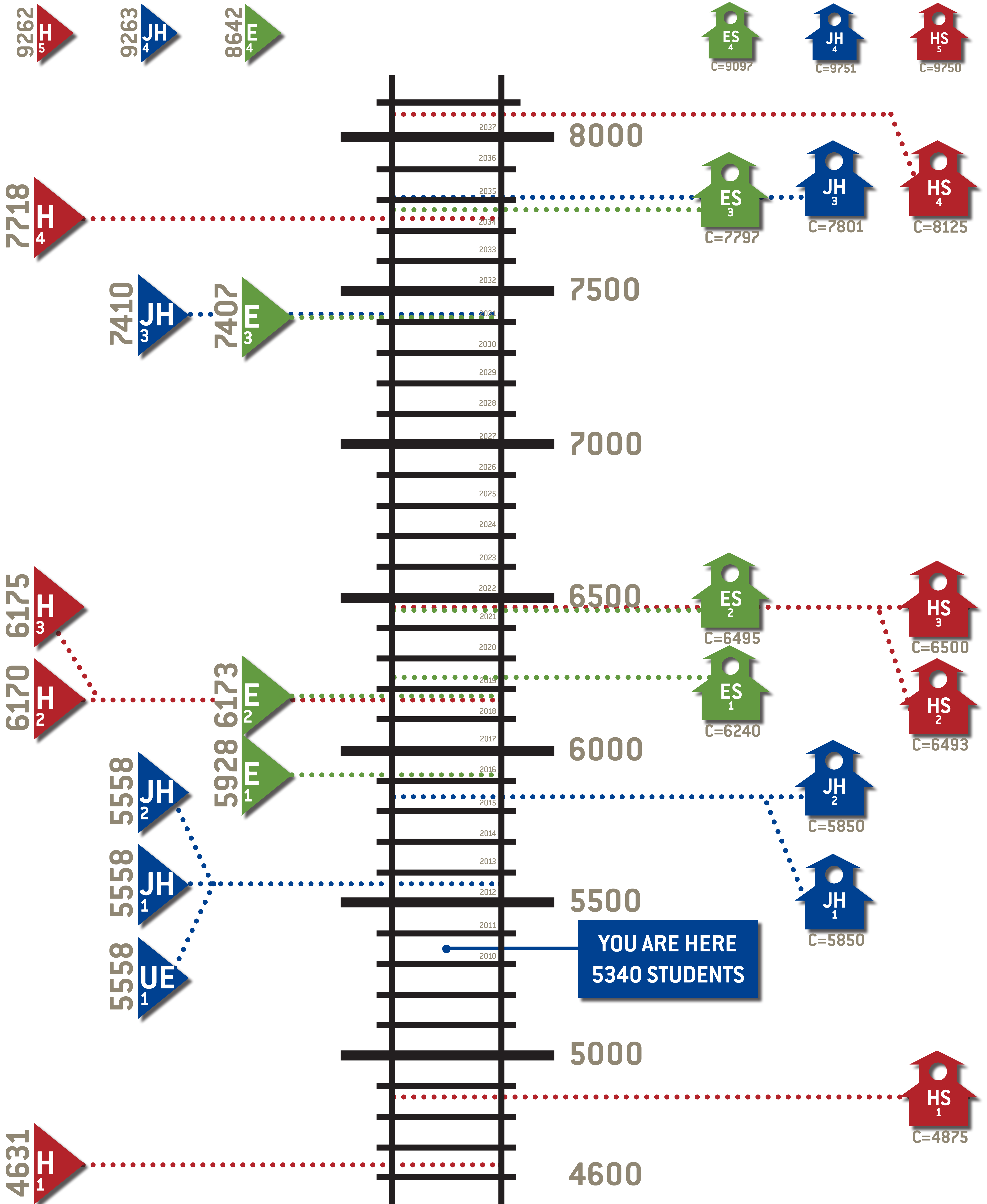




FLASH POINT - ENROLLMENT LINE

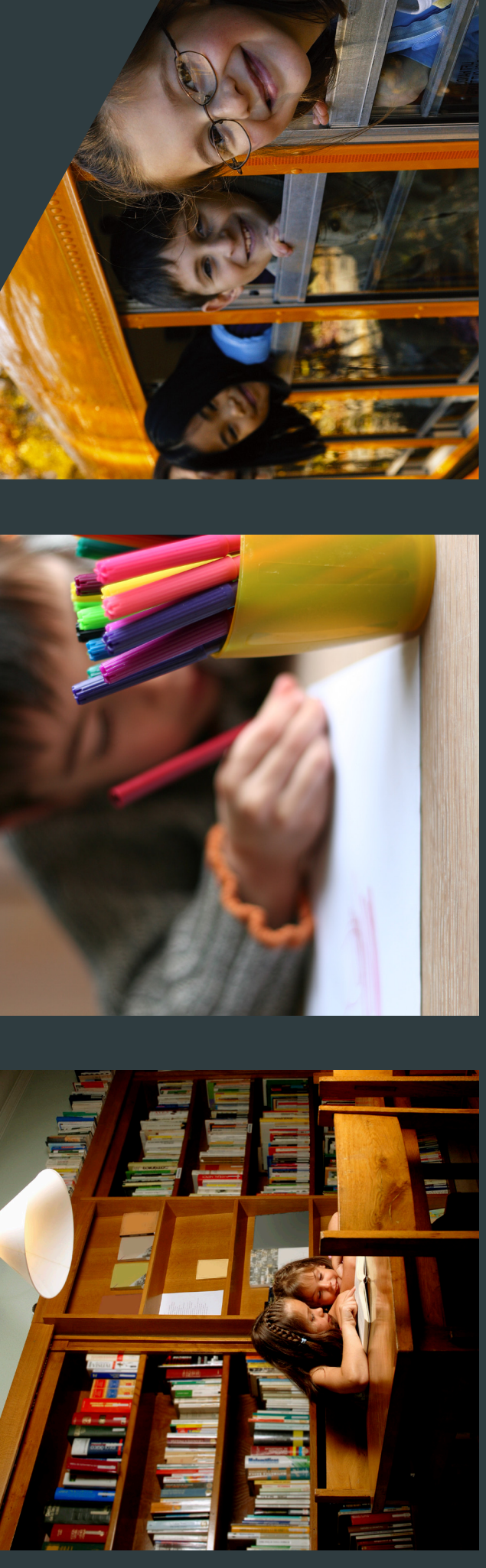




FLASHPOINT CALCULATIONS

	STEP 1	STEP 2	STEP 3	STEP 4	STEP 5	STEP 6	STEP 7	STEP 8	STEP 9	STEP 10	General Notes
Grades 9-12 transitions to 10-12 then back to 9-12											
Ozark High School (Existing) (OHS)	1,500 Grades 10-12	1,500	1,500	1,500	1,500	1,500	1,500	1,500	1,500	1,500	
Future High School "B" (OHS2)		500 Grades 9-12		7,000 Grades 9-12	1,000 Grades 9-12	1,500 Grades 9-12	1,500 Grades 9-12	1,500 Grades 9-12	1,500 Grades 9-12	1,500 Grades 9-12	
Grades 5/6 + 7/8 transitions to Grade 6-8											
Ozark Junior High School (Grade 7-8) (OJHS)	900 Grades 6-9	900 Grades 6-8	900	900	900	900	900	900	900	900	
Upper Elementary School (Grades 5-6) (OUES1)	900 Grades 6-7	900 Grades 6-8	900	900 Grades 6-8	900 Grades 6-8	900 Grades 6-8	900 Grades 6-8	900 Grades 6-8	900 Grades 6-8	900 Grades 6-8	
Future Middle School "B" (JHS)						450 Grades 6-8	450 Grades 6-8	450 Grades 6-8	450 Grades 6-8	900 Grades 6-8	
Grades K-4 transition to K-5											
North Elementary School (NES)	600	600	600	600	600	600	600	600	600	600	
West Elementary School (WES)	600	600	600	600	600	600	600	600	600	600	
East Elementary School (EES)	600	600	600	600	600	600	600	600	600	600	
South Elementary School (SES)	600	600	600	600	600	600	600	600	600	600	
Future Elementary School "1" (NES1)	600	600	600	600	600	600	600	600	600	600	
Future Elementary School "2" (NES2)	600 Grades K-5	600 Grades K-5	600 Grades K-5	600 Grades K-5	600 Grades K-5	600 Grades K-5	600 Grades K-5	600 Grades K-5	600 Grades K-5	600 Grades K-5	
Future Elementary School "3" (NES3)											
Future Elementary School "4" (NES4)											
Future Elementary School "5" (NES5)											
Early Childhood											
New Classrooms at NES1	40	40	40	40	40	40	40	40	40	40	
New Classrooms at Existing SES		40	40	40	40	40	40	40	40	40	
New Classrooms at NES2		40	40	40	40	40	40	40	40	40	
New Classrooms at NES3		40	40	40	40	40	40	40	40	40	
New Classrooms at NES4		40	40	40	40	40	40	40	40	40	
New Classrooms at NES5		40	40	40	40	40	40	40	40	40	
OVERALL CAPACITY	5,700	6,880	7,520	8,020	8,660	9,160	9,610	10,250	10,890	11,340	

	UPPER ELEMENTARY SCHOOL	JUNIOR HIGH SCHOOL	HIGH SCHOOL
ECH	ELEMENTARY SCHOOLS	JUNIOR HIGH SCHOOL	HIGH SCHOOL
Grades K-4 (38.46%) 38.46% = 2,600 / 2400 ELEM CAPACITY (Exist) 6240 = CAPACITY "E1" FLASH "E1" = 5928	Grades 5-6 (15.38%) 15.38% = 6,501 / 900 UPPER ESCAPACITY (Exist) 5850 = CAPACITY "UES1" FLASH "UES1" = 5558	Grades 7-8 (15.38%) 15.38% = 6,501 / 900 JH CAPACITY (Exist) 5850 = CAPACITY "JH1" FLASH "JH1" = 5558	Grades 9-12 (30.76%) 30.76% = 3,250 / 1500 HSCAPACITY (Existing) 4875 = CAPACITY "H1" FLASH "H1" = 4631
Grades K-5 (46.15%) 46.15% = 2,166 / 3000 ELEM CAPACITY (New ES1) 6498 = CAPACITY "E2" FLASH "E2" = 6173	Grades 8-9 (15.38%) 15.38% = 6,501 / 900 JH CAPACITY (Add 9th) 5850 = CAPACITY "JH2" FLASH "JH2" = 5558	Grades 8-9 (15.38%) 15.38% = 6,501 / 900 JH CAPACITY (Add 9th) 5850 = CAPACITY "JH2" FLASH "JH2" = 5558	Grades 10-12 (23.07%) 23.07% = 4,330 / 1500 HSCAPACITY (Remove 9th) 6495 = CAPACITY "H2" FLASH "H2" = 6170
Grades K-5 (46.15%) 46.15% = 2,166 / 3600 ELEM CAPACITY (New ES2) 7797 = CAPACITY "E3" FLASH "E3" = 7407	Grades 6-8 (23.07%) 23.07% = 4,334 / 1800 JH CAPACITY (2/6-8 Edg 9) 7801 = CAPACITY "JH3" FLASH "JH3" = 7410	Grades 6-8 (23.07%) 23.07% = 4,334 / 1800 JH CAPACITY (2/6-8 Edg 9) 7801 = CAPACITY "JH3" FLASH "JH3" = 7410	Grades 9-12 (30.76%) 30.76% = 3,250 / 2000 HSCAPACITY (New 9th Cit) 6500 = CAPACITY "H3" FLASH "H3" = 6175
Grades K-5 (46.15%) 46.15% = 2,166 / 4200 ELEM CAPACITY (New ES3) 9097 = CAPACITY "E4" FLASH "E4" = 8642	Grades 6-8 (23.07%) 23.07% = 4,334 / 2250 JH CAPACITY (New JHS3) 9751 = CAPACITY "JH4" FLASH "JH4" = 9263	Grades 6-8 (23.07%) 23.07% = 4,334 / 2250 JH CAPACITY (New JHS3) 9751 = CAPACITY "JH4" FLASH "JH4" = 9263	Grades 9-12 (30.76%) 30.76% = 3,250 / 2500 HSCAPACITY (Expand OHS) 8125 = CAPACITY "H4" FLASH "H4" = 7718
Grades K-5 (46.15%) 46.15% = 2,166 / 4800 ELEM CAPACITY (New ES4) 10386 = CAPACITY "E5" FLASH "E5" = 9876	Grades 6-8 (23.07%) 23.07% = 4,334 / 2700 JH CAPACITY (Expand JHS3) 11701 = CAPACITY "JH5" FLASH "JH5" = 11116	Grades 6-8 (23.07%) 23.07% = 4,334 / 2700 JH CAPACITY (Expand JHS3) 11701 = CAPACITY "JH5" FLASH "JH5" = 11116	Grades 9-12 (30.76%) 30.76% = 3,250 / 3000 HSCAPACITY (Expand OHS) 9750 = CAPACITY "H5" FLASH "H5" = 9262
Grades K-5 (46.15%) 46.15% = 2,166 / 5400 ELEM CAPACITY (New ES5) 11686 = CAPACITY "E6" FLASH "E6" = 11111 Flash Point = 95%	Flash Point = 95%	Flash Point = 95%	Flash Point = 95%



ENROLLMENT PROJECTIONS

School Year	Annual Growth	Grade K	Grade 1	Grade 2	Grade 3	Grade 4	Grade 5	Grade 6	Grade 7	Grade 8	Grade 9	Grade 10	Grade 11	Grade 12	Total
2010		436	426	413	423	457	441	433	405	417	389	421	354	325	5340
2011	100	444	434	421	431	465	449	441	413	425	397	429	362	333	5440
2012	100	451	441	428	438	472	456	448	420	432	404	436	369	340	5540
2013	100	459	449	436	446	480	464	456	428	440	412	444	377	348	5640
2014	100	467	457	444	454	488	472	464	436	448	420	452	385	356	5740
2015	100	474	464	451	461	495	479	471	443	455	427	459	392	363	5840
2016	100	482	472	459	469	503	487	479	451	463	435	467	400	371	5940
2017	100	490	480	467	477	511	495	487	459	471	443	475	408	379	6040
2018	100	498	488	475	485	519	503	495	467	479	451	483	416	387	6140
2019	100	505	495	482	492	526	510	502	474	486	458	490	423	394	6240
2020	100	513	503	490	500	534	518	510	482	494	466	498	431	402	6340
2021	100	521	511	498	508	542	526	518	490	502	474	506	439	410	6440
2022	100	528	518	505	515	549	533	525	497	509	481	513	446	417	6540
2023	100	536	526	513	523	557	541	533	505	517	489	521	454	425	6640
2024	100	544	534	521	531	565	549	541	513	525	497	529	462	433	6740
2025	100	551	541	528	538	572	556	548	520	532	504	536	469	440	6840
2026	100	559	549	536	546	580	564	556	528	540	512	544	477	448	6940
2027	100	567	557	544	554	588	572	564	536	548	520	552	485	456	7040
2028	100	574	564	551	561	595	579	571	543	555	527	559	492	463	7140
2029	100	582	572	559	569	603	587	579	551	563	535	567	500	471	7240
2030	100	590	580	567	577	611	595	587	559	571	543	575	508	479	7340
2031	100	598	588	575	585	619	603	595	567	579	551	583	516	487	7440
2032	100	605	595	582	592	626	610	602	574	586	558	590	523	494	7540
2033	100	613	603	590	600	634	618	610	582	594	566	598	531	502	7640
2034	100	621	611	598	608	642	626	618	590	602	574	606	539	510	7740
2035	100	628	618	605	615	649	633	625	597	609	581	613	546	517	7840