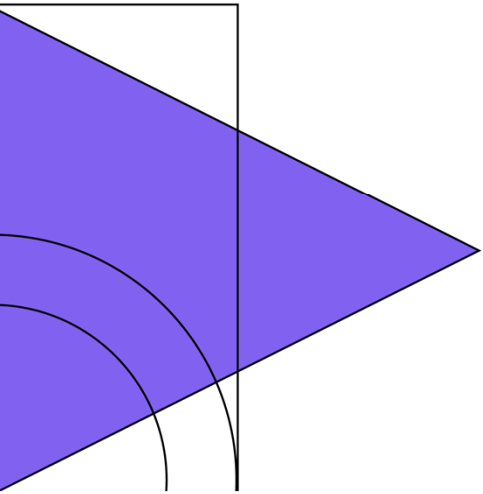
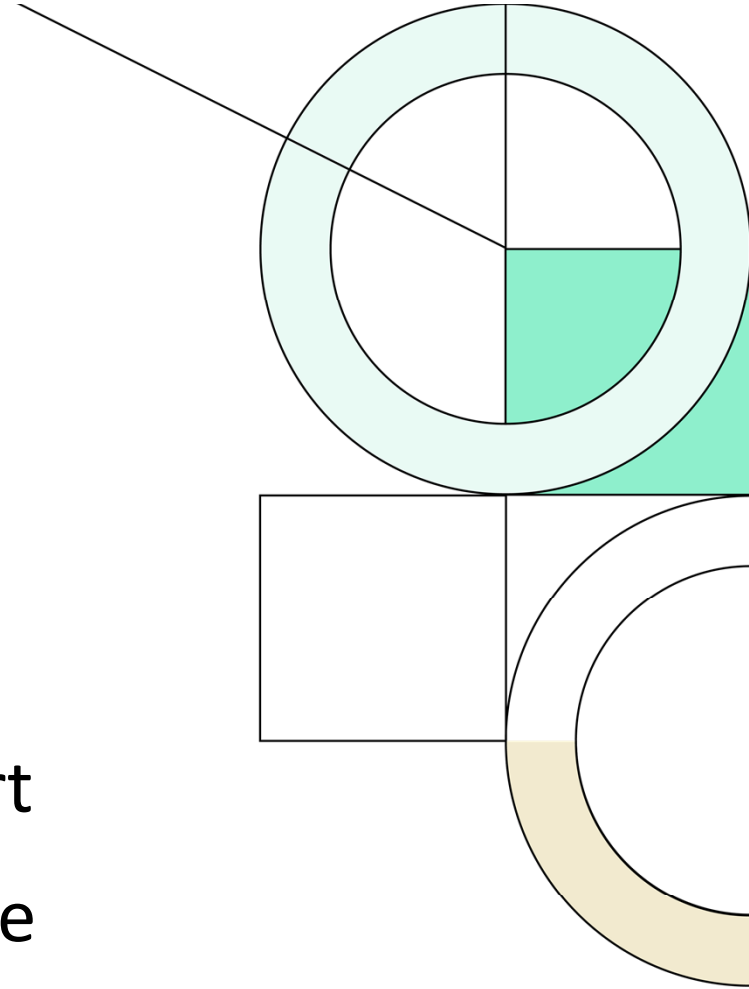




**Ozark
School
District**

**Demographic Report
January 2022 update**





Year (Oct.)	K	1st	2nd	3rd	4th	5th	6th	7th	8th	9th	10th	11th	12th	K-12 Total	K-12 Total Growth	K-12 % Growth
2016/17	428	442	409	427	422	475	427	438	405	455	438	415	398	5,579		
2017/18	425	441	462	415	441	443	495	444	432	422	451	433	423	5,727	148	2.65%
2018/19	432	434	451	469	418	455	447	487	459	425	426	449	435	5,787	60	1.05%
2019/20	411	410	443	450	458	431	462	445	497	457	416	428	446	5,754	-33	-0.57%
2020/21	419	409	401	427	453	453	435	457	455	480	465	433	430	5,717	-37	-0.64%
2021/22	477	438	419	421	446	492	483	458	483	457	472	484	417	5,947	230	4.02%

Yellow Box = Highest grade per year
 Green Box = Second highest grade per year

Survival Cohorts	K	1st	2nd	3rd	4th	5th	6th	7th	8th	9th	10th	11th	12th	Elem	MS	JH	HS
2017/18	0.993	1.030	1.045	1.015	1.033	1.050	1.042	1.040	0.986	1.042	0.991	0.989	1.019	1.028	1.041	1.014	1.000
2018/19	1.016	1.021	1.023	1.015	1.007	1.032	1.009	0.984	1.034	0.984	1.009	0.996	1.005	1.019	0.996	1.009	1.003
2019/20	0.951	0.949	1.021	0.998	0.977	1.031	1.015	0.996	1.021	0.996	0.979	1.005	0.993	0.988	1.005	1.008	0.992
2020/21	1.019	0.995	0.978	0.964	1.007	0.989	1.009	0.989	1.022	0.966	1.018	1.041	1.005	0.992	0.999	0.994	1.021
2021/22	1.138	1.045	1.024	1.050	1.044	1.086	1.066	1.053	1.057	1.004	0.983	1.041	0.963	1.065	1.060	1.031	0.996

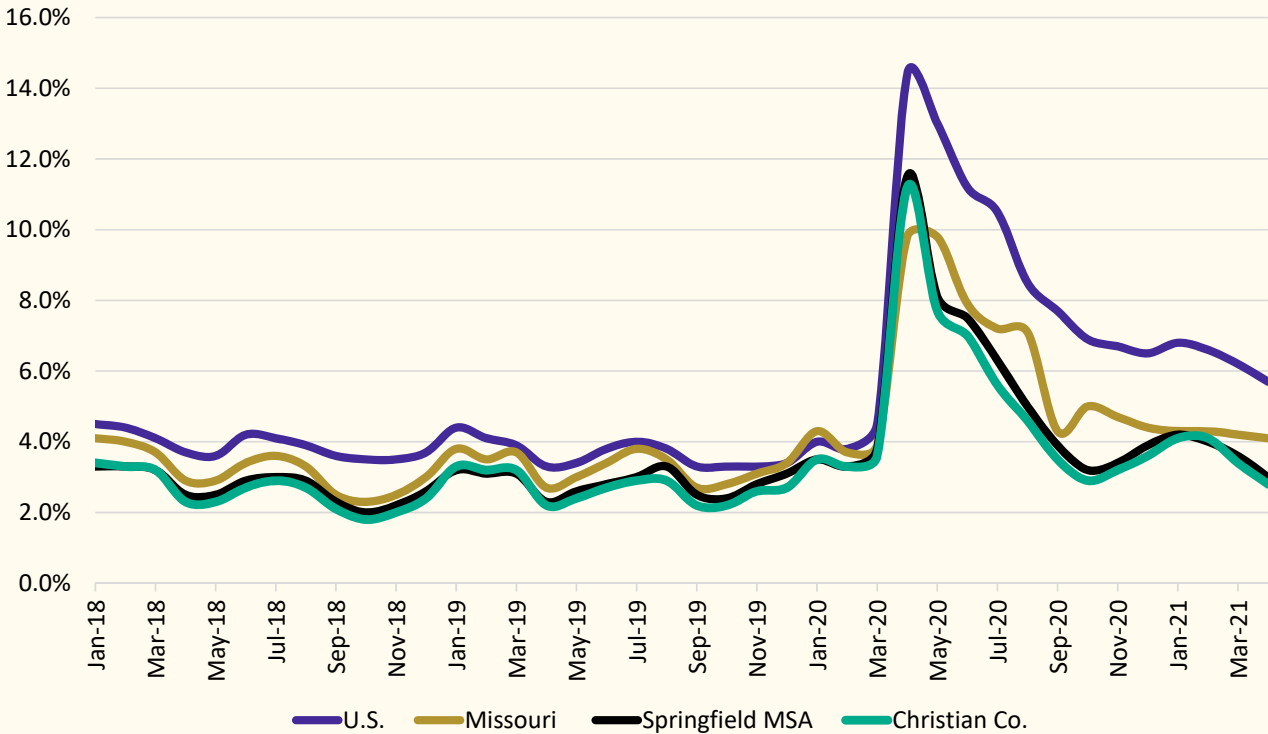
- Ozark School District enrollment increased by 230 students this fall
- Kindergarten cohort was the highest in the last several years
- Elementary grade level cohort growth averaged 6.5%



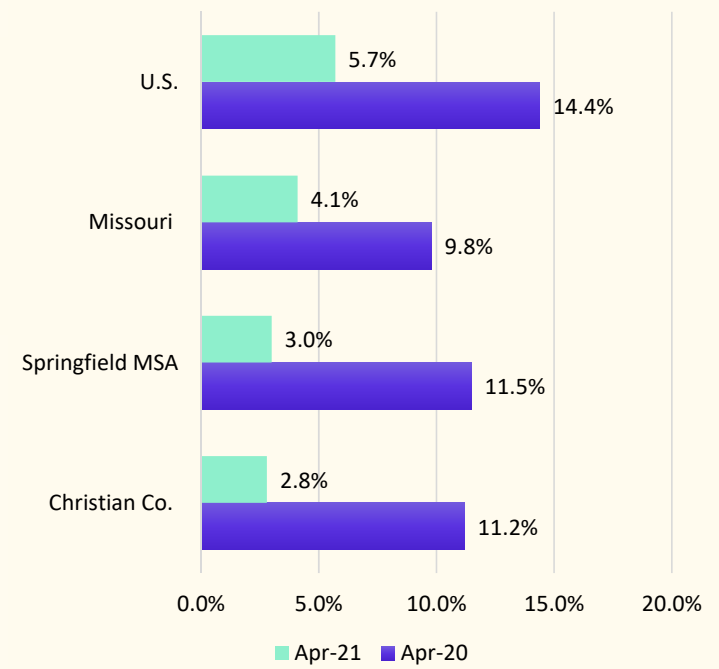


Local Economic Conditions

Unemployment Rate, Jan 2018 – Apr 2021

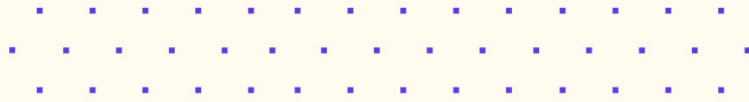


Unemployment Rate, Year over Year





Local Economic Conditions



John Deere Remanufacturing Expansion

- John Deere is expanding its remanufacturing capability in Springfield
- The company is adding drive train and hydraulic manufacturing operations to its 2 locations in Springfield, and adding a 130,000 sq. ft. warehouse
- The expansion is expected to create 130 new positions



Envoy Air Maintenance Operations Expansion

- Envoy Air Inc., a subsidiary of American Airlines Group is expanding its aircraft maintenance operations at the Springfield-Branson National Airport.
- The project represents an \$11Million investment and construction has begun on a new 55,000 sq. ft. aircraft hangar that is scheduled for completion later this year
- The expansion is expected to generate new jobs, though the exact number of jobs is still to be determined



Amazon Fulfillment Center

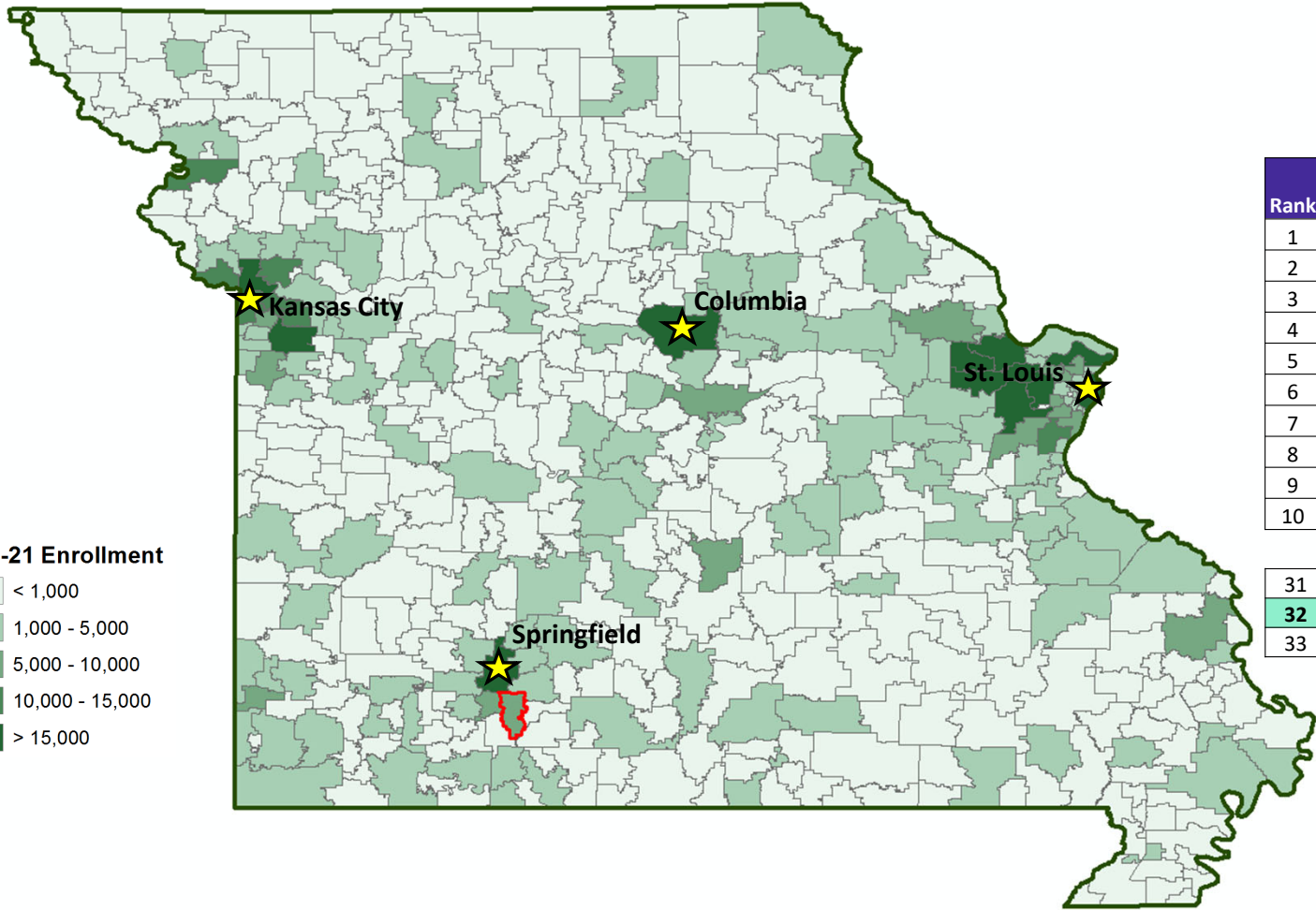
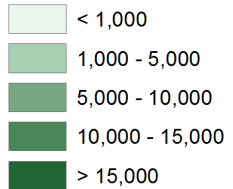
- Amazon is nearing completion on a new 1.3 million sq. ft. fulfillment center in Republic
- The facility will employ appx. 500 full-time workers and is scheduled to open in August
- The facility is located roughly 20 miles NW of Ozark
- Amazon is also in the process hiring hundreds more part-time employees for its AMXL delivery station in Springfield





State Enrollment Trends

2020-21 Enrollment



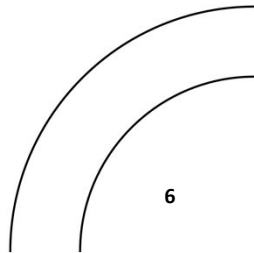
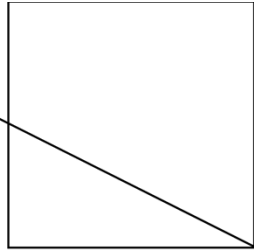
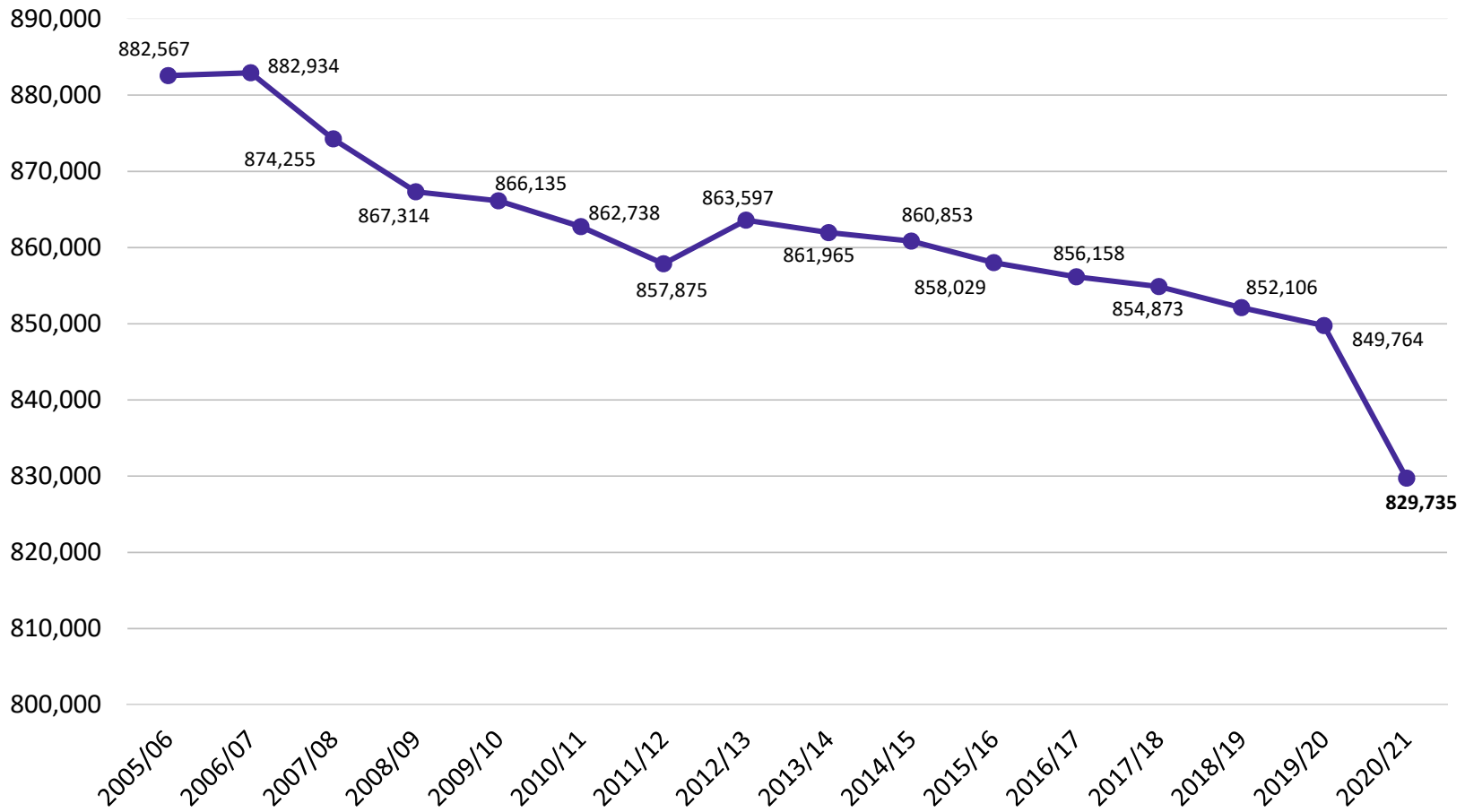
Rank	District	2020-21 Enrollment
1	Springfield R-XII School District	23,160
2	North Kansas City 74 School District	20,258
3	Rockwood R-VI School District	20,212
4	St. Louis City School District	18,238
5	Columbia 93 School District	17,706
6	Lee's Summit R-VII School District	17,507
7	Fort Zumwalt R-II School District	17,099
8	Wentzville R-IV School District	17,074
9	Parkway C-2 School District	17,033
10	Francis Howell R-III School District	16,488

31	Kirkwood R-VII School District	5,807
32	Ozark R-VI School District	5,717
33	Waynesville R-VI Schools	5,680



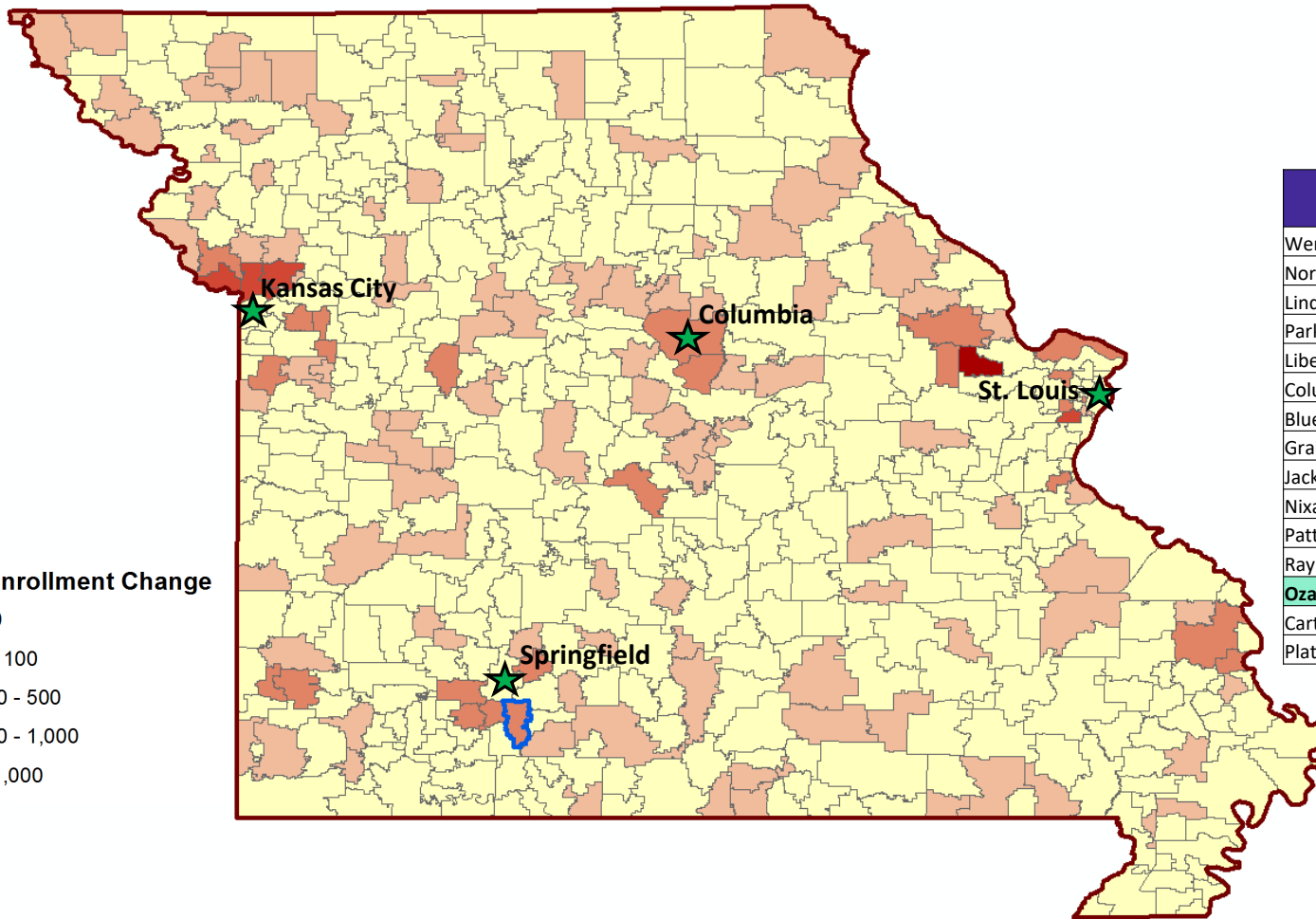
State Enrollment Trends

Total State Enrollment, 2005/06 - 2020/21





State Enrollment Trends



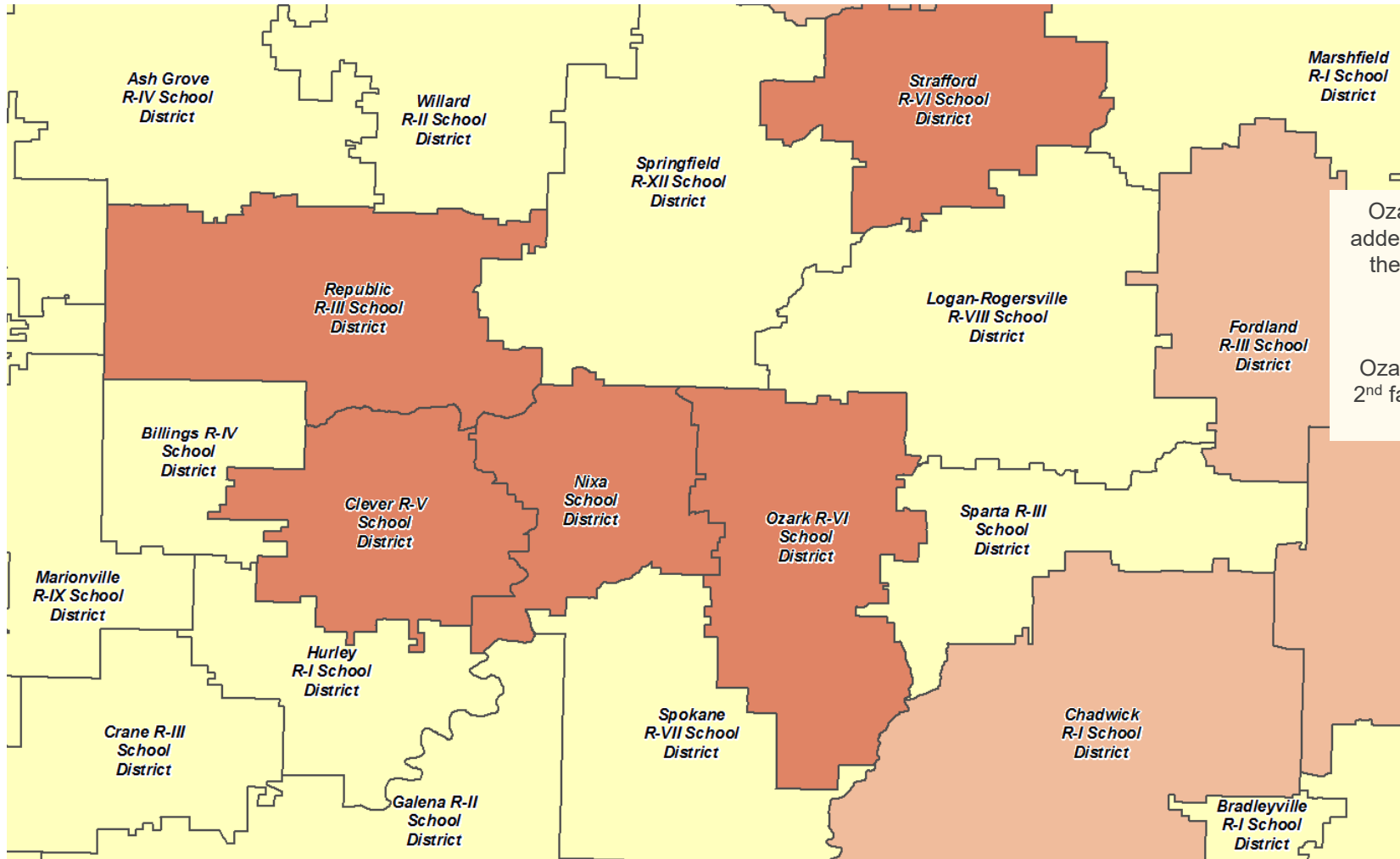
5 Year Enrollment Change

- < 0
- 0 - 100
- 100 - 500
- 500 - 1,000
- > 1,000

District	2020-21 Enrollment	5 Year Growth
Wentzville R-IV School District	17,074	1,738
North Kansas City 74 School District	20,258	878
Lindbergh School District	7,070	575
Park Hill School District	11,682	571
Liberty 53 School District	12,563	554
Columbia 93 School District	17,706	493
Blue Springs R-IV School District	14,533	432
Grain Valley R-V School District	4,415	385
Jackson R-II School District	5,233	378
Nixa School District	6,173	355
Pattonville R-III School District	5,885	310
Raymore-Peculiar R-II School District	6,187	260
Ozark R-VI School District	5,717	251
Carthage R-IX School District	4,873	249
Platte County R-III School District	4,205	245

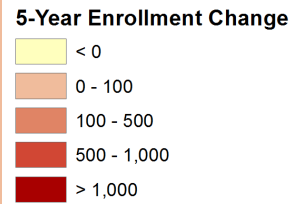


State Enrollment Trends



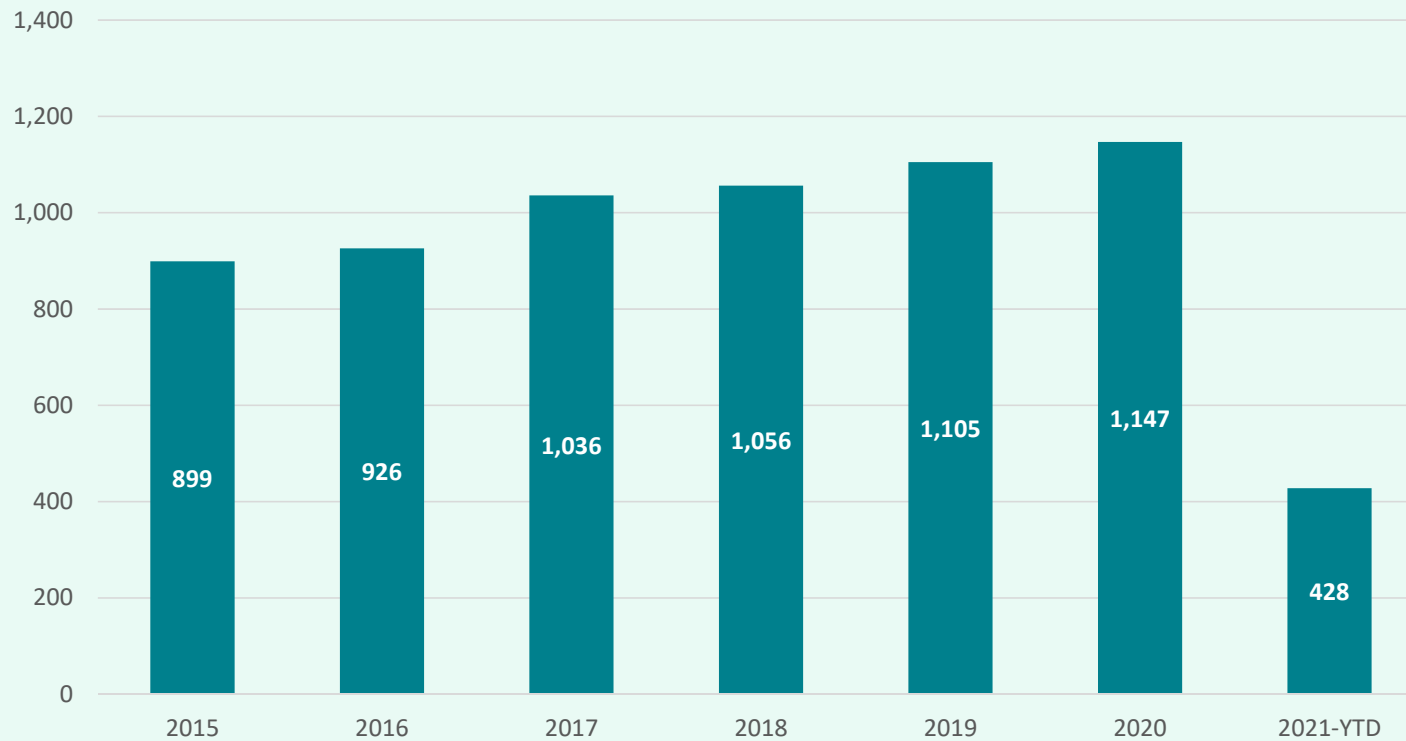
Ozark School District has added 251 students between the 2015/16 and 2020/21 school years

Ozark School District is the 2nd fastest growing district in the region





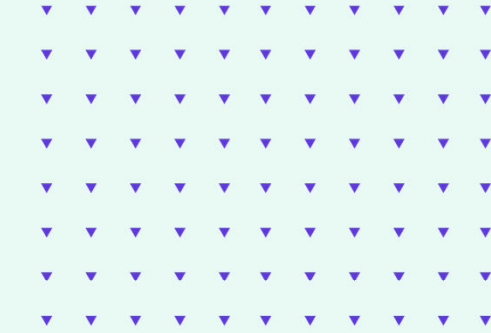
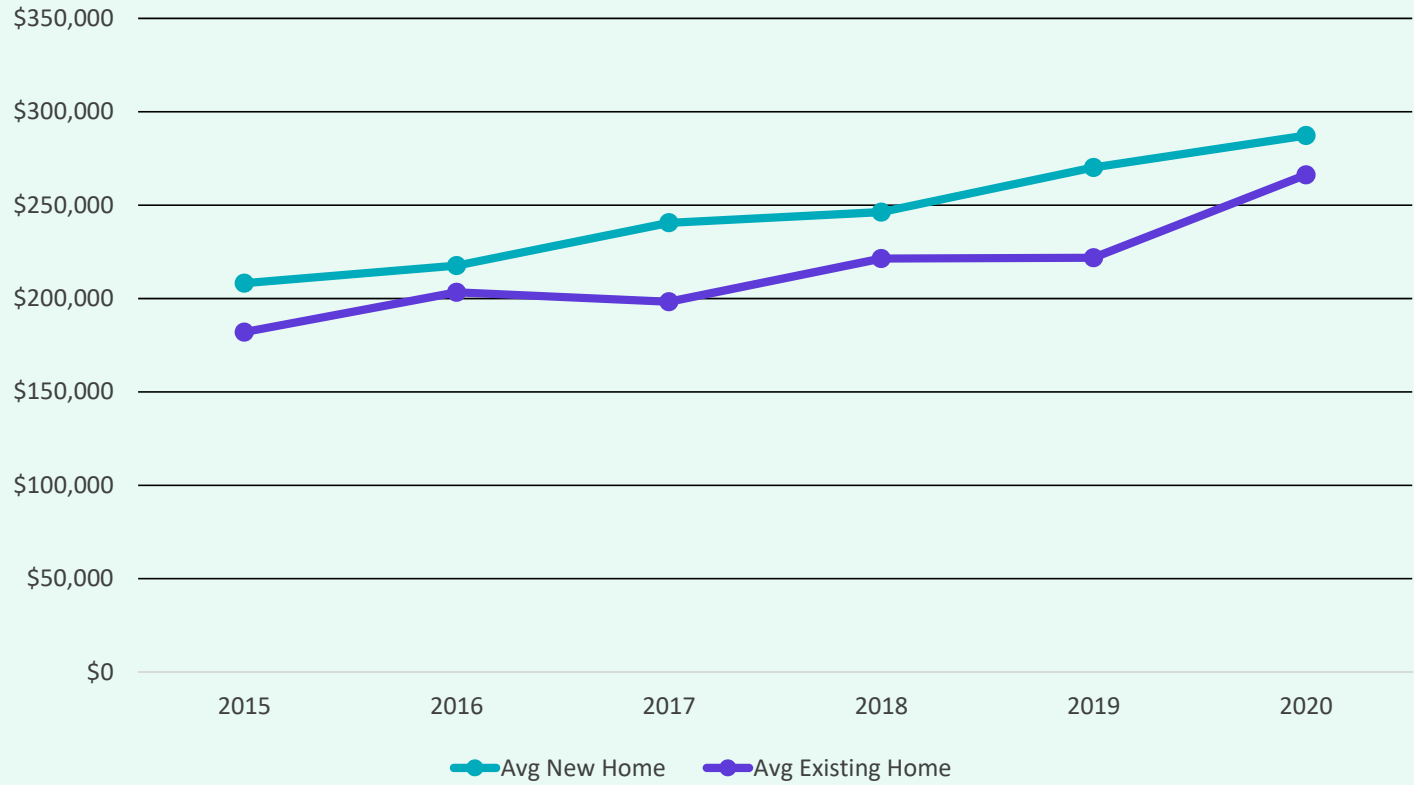
Ozark School District Historical Home Sales



- Ozark School District had 1,147 total home sales in 2020, a nearly 4% increase from 2019 totals
- New home sales in 2020 in the Ozark School District were the highest in over 5 years, accounting for nearly 15% of the total home sales within the district

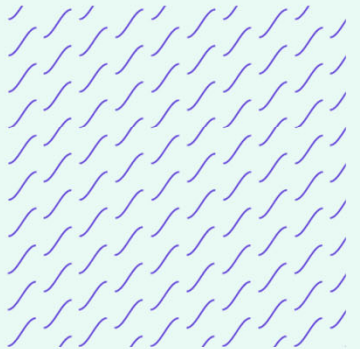


Ozark School District Home Price Analysis



	Avg New Home	Avg Existing Home
2015	\$208,230	\$182,024
2016	\$217,609	\$203,328
2017	\$240,570	\$198,313
2018	\$246,283	\$221,387
2019	\$270,175	\$221,814
2020	\$287,328	\$266,237

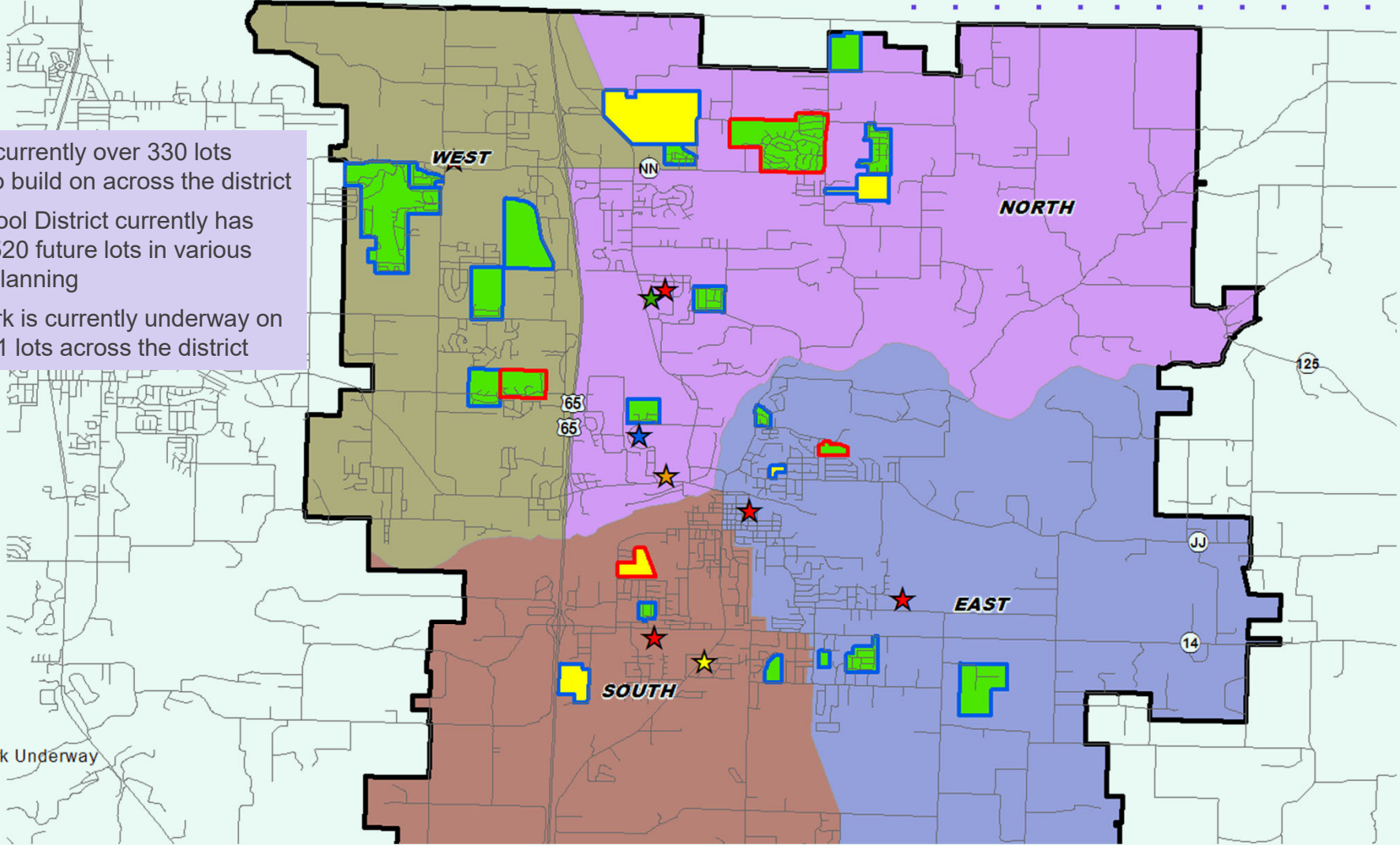
- The average sale price for a new home within the Ozark School District has risen roughly 38% in the last 5 years, an increase of nearly \$79,100
- The average sale price for an existing home within the district has risen 46% since 2015, an increase of \$84,213





District Housing Overview

- There are currently over 330 lots available to build on across the district
- Ozark School District currently has roughly 1,520 future lots in various stages of planning
- Groundwork is currently underway on roughly 291 lots across the district



Subdivisions

- ACTIVE
- FUTURE
- Groundwork Underway



Residential Activity



June 2021



- Olde World Estates**
- 357 total lots
 - Appx. 121 vacant developed lots
 - Appx. 104 homes under construction
 - Appx. 132 homes occupied
 - Build out anticipated spring 2022
 - \$260K-\$460K
 - Current student yield: 0.272



Residential Activity

Creekbridge

- 165 total lots
- 72 future lots
- Appx. 20 vacant developed lots
- Appx. 72 homes occupied
- Phase 2 (21 lots) delivered, first home under construction
- Phases 3, 4, 5 (72 lots) plats approved, groundwork underway, anticipate Phase 3 delivering early 2022
- Current student yield: 0.819



Stone Gate

- 122 total lots
- Appx. 24 vacant developed lots
- Appx. 7 homes under construction
- Appx. 91 homes occupied
- Phases 2 (45 lots) delivered and homebuilding
- Building 15-20 homes per year
- Current student yield: 0.626

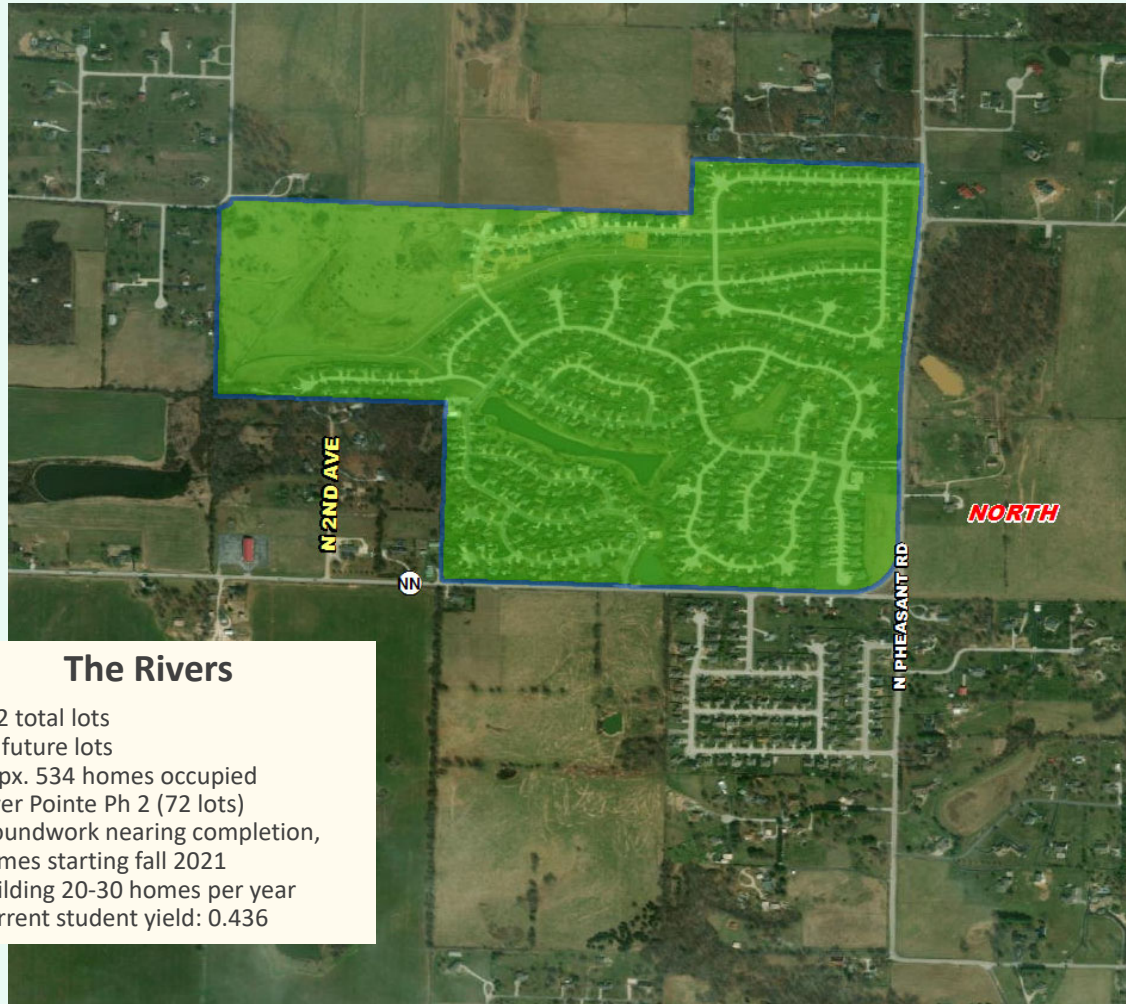


June 2021





Residential Activity

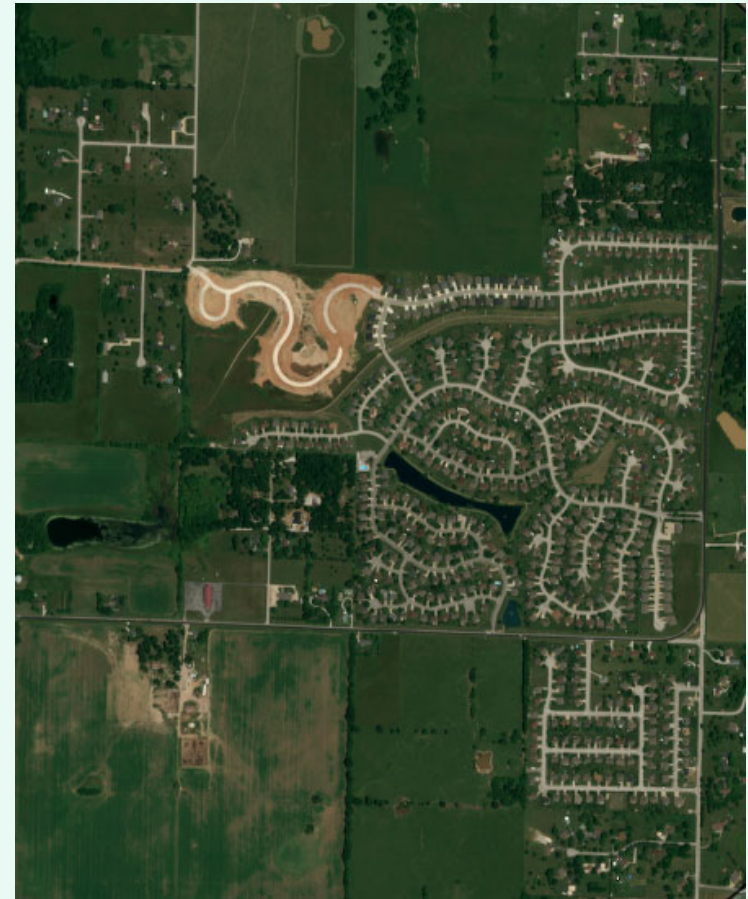


The Rivers

- 602 total lots
- 72 future lots
- Appx. 534 homes occupied
- River Pointe Ph 2 (72 lots) groundwork nearing completion, homes starting fall 2021
- Building 20-30 homes per year
- Current student yield: 0.436



June 2021



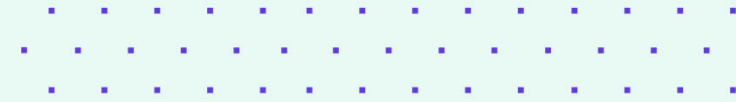


Future Residential Activity



Woodcrest

- 117 total future lots
- Groundwork underway
- First lots delivering fall 2021
- Developer anticipates building 80-100 homes per year



June 2021





Residential Activity

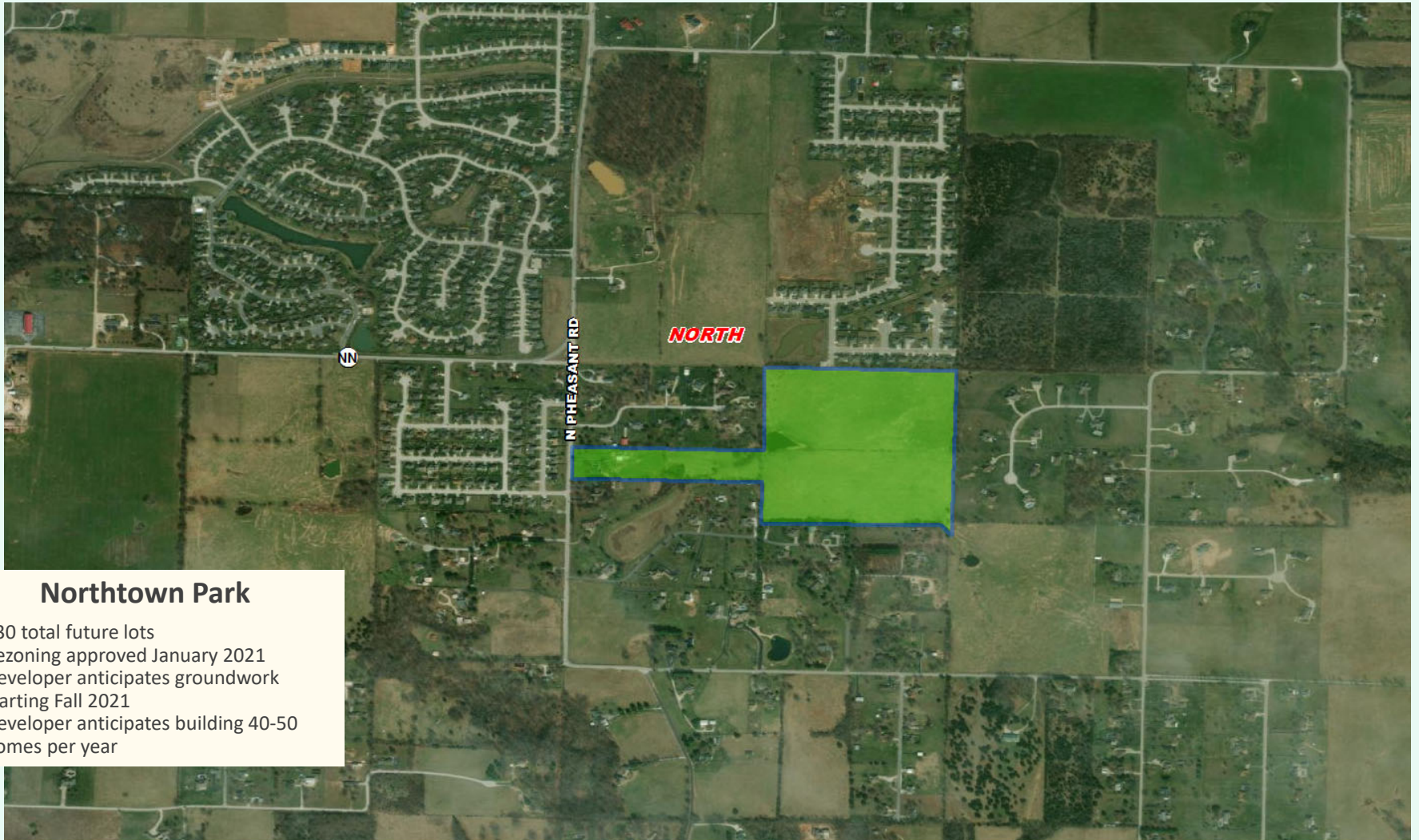
Eagle Springs

- 222 total lots
- 165 future lots
- Phase 1 (57 lots) built out
- Phases 2 and 3 (165 lots) preliminary plat approved Jan 2021
- Groundwork starting July 2021, lots delivering spring 2022
- Developer anticipates building 90-100 homes per year
- Current student yield: 0.421





Future Residential Activity

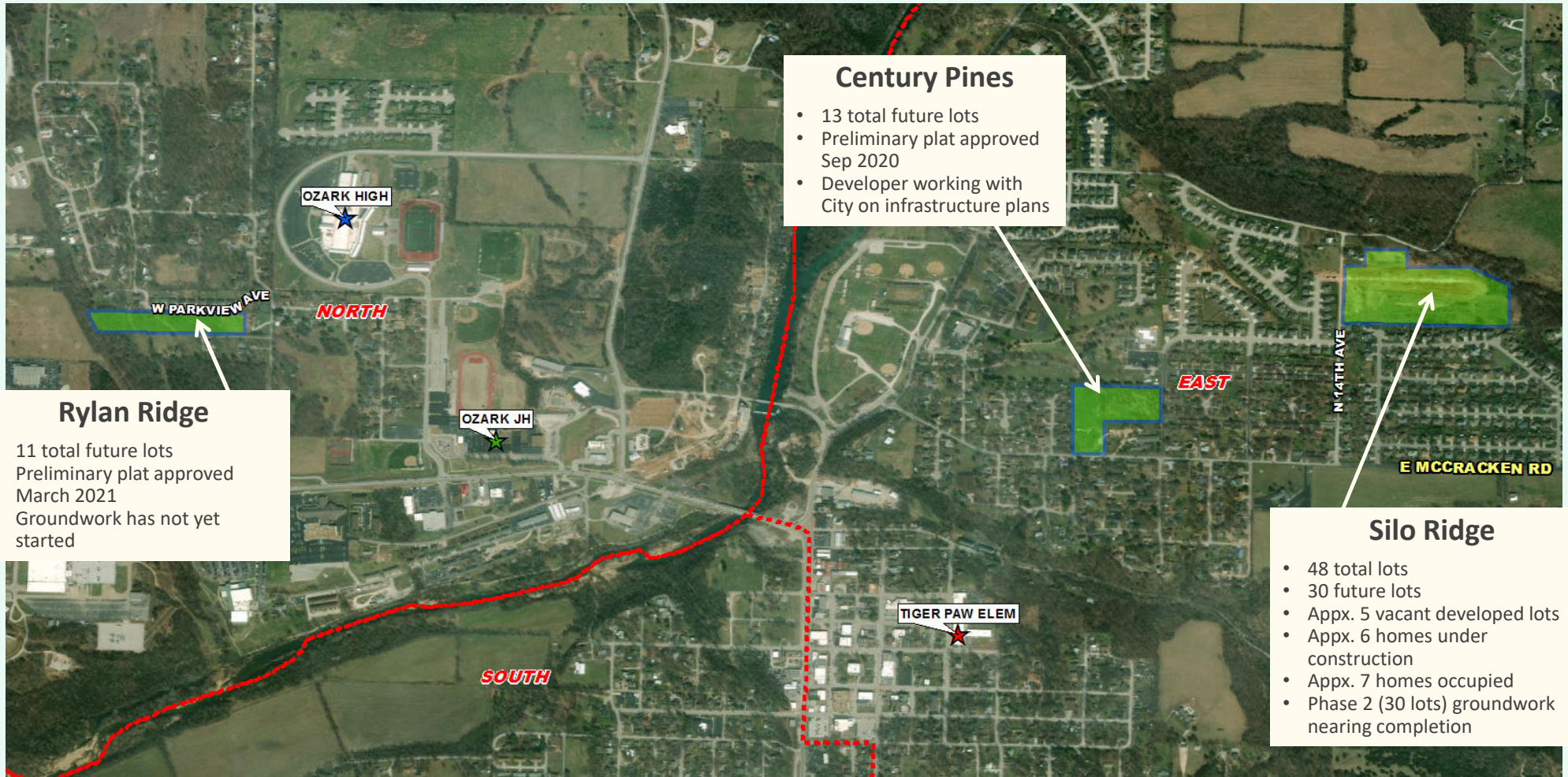


Northtown Park

- 130 total future lots
- Rezoning approved January 2021
- Developer anticipates groundwork starting Fall 2021
- Developer anticipates building 40-50 homes per year



Future Residential Activity





Future Residential Activity



Valley Ridge Estates

- 135 total future lots planned
- Plans in design phase
- Developer anticipates groundwork starting 2023
- First lots available 2024



Future Residential Activity

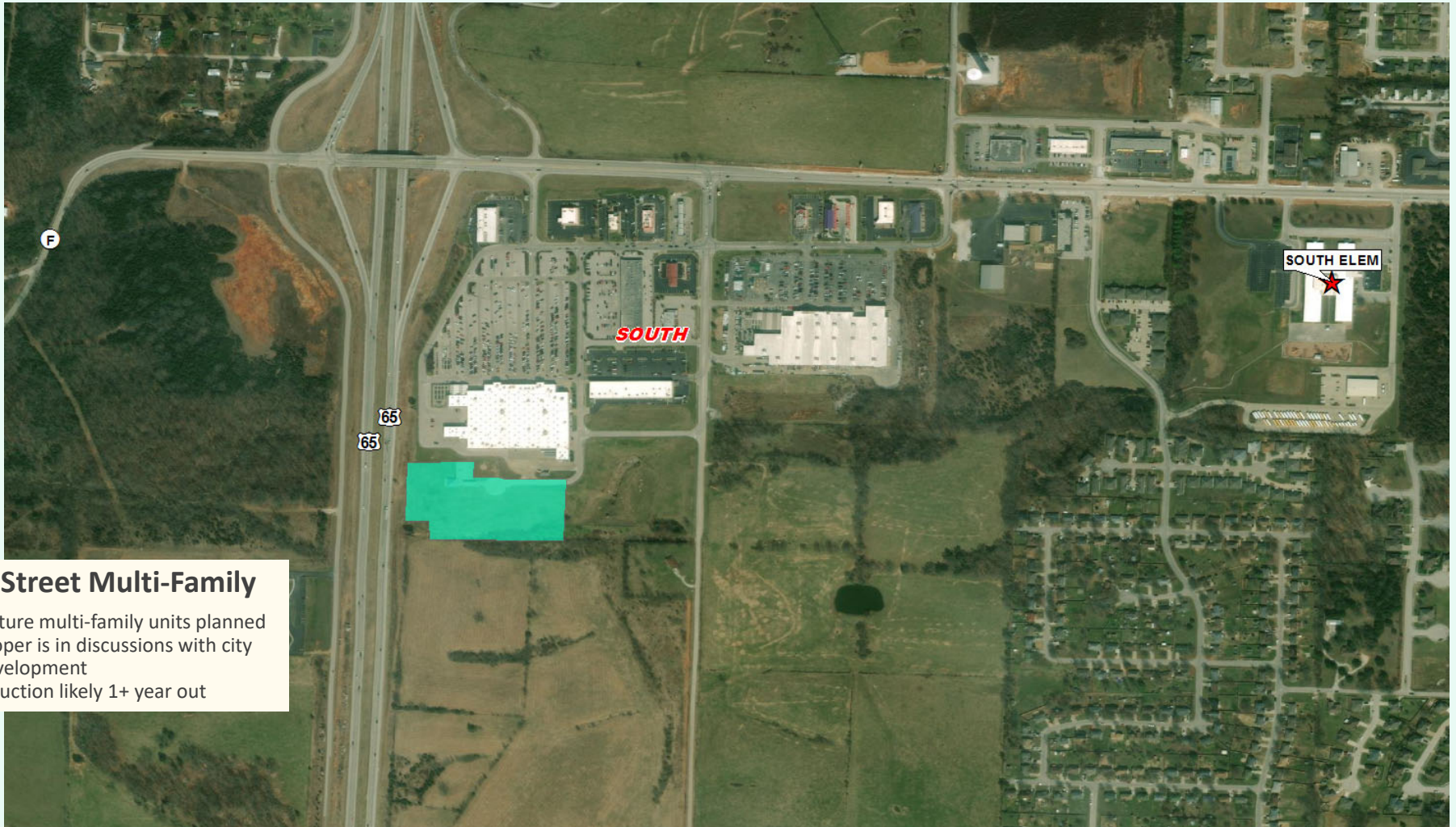


Marabella

- Future mixed use development
- Appx. 864 total residential units
 - 150 multi-family units
 - 714 single family lots
- Annexation, zoning, and preliminary plat for northern section approved Dec 2021
- Developer anticipates groundwork starting spring 2022
- First lots delivering fall 2022
- First residents anticipated spring 2023
- Developer anticipates building 50-100 homes per year
- No plans for multi-family section at this time



Multi-Family Activity

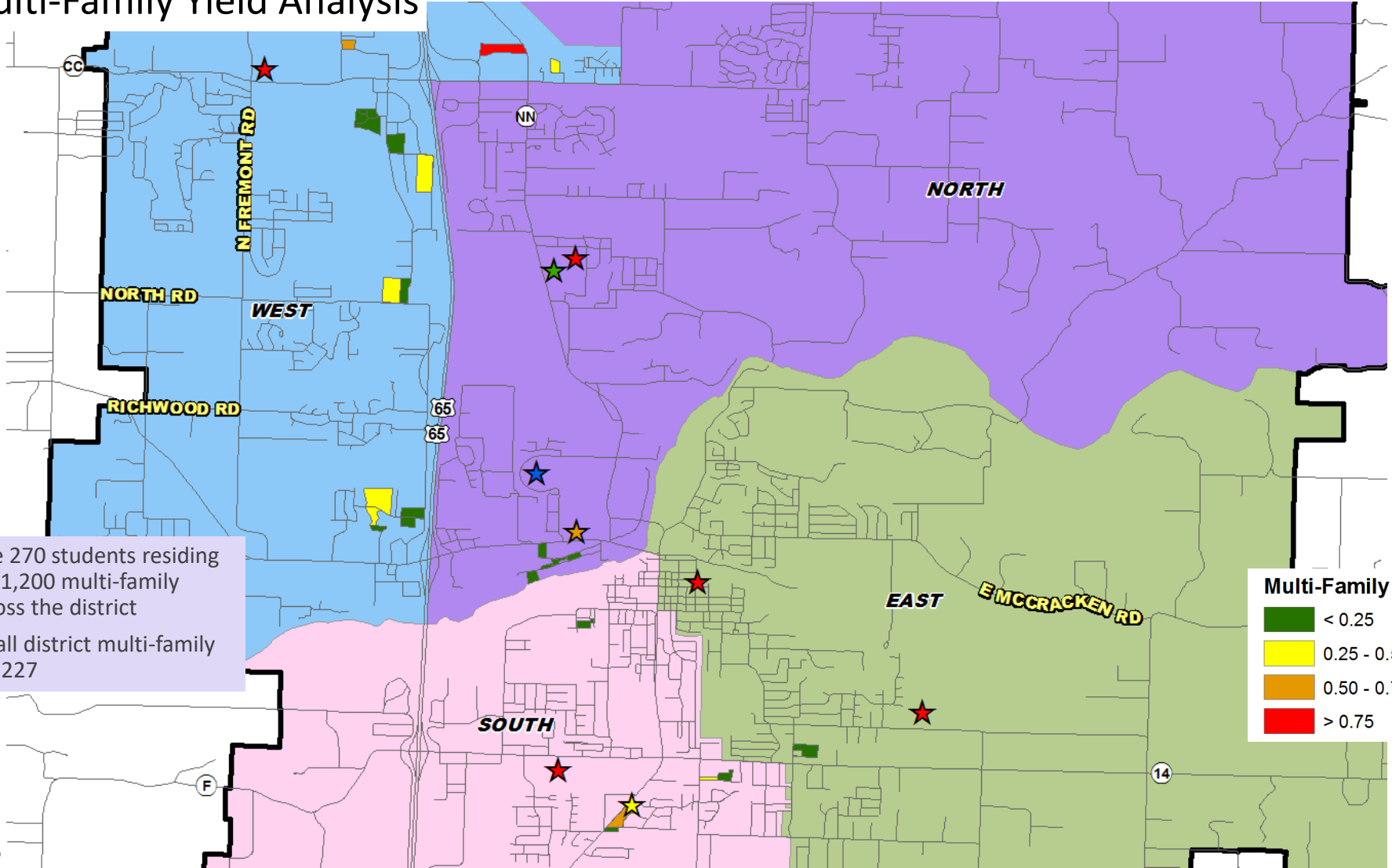


20TH Street Multi-Family

- 142 future multi-family units planned
- Developer is in discussions with city for development
- Construction likely 1+ year out



Multi-Family Yield Analysis

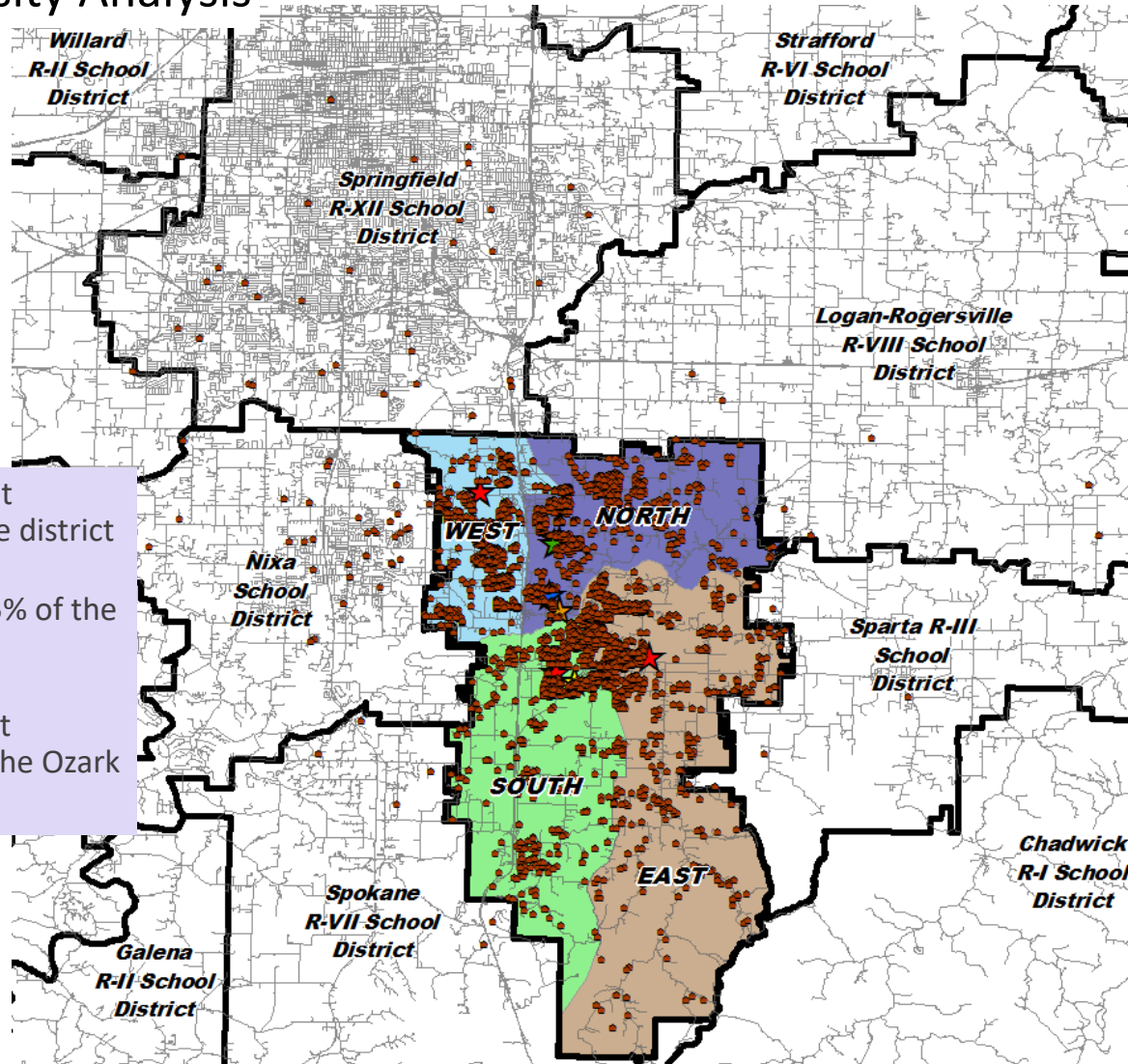


- There are 270 students residing in nearly 1,200 multi-family units across the district
- The overall district multi-family yield is 0.227

Multi-Family Yield	
Dark Green	< 0.25
Yellow	0.25 - 0.50
Orange	0.50 - 0.75
Red	> 0.75



Student Density Analysis



- There are 150 students that currently reside outside the district
- This represents roughly 2.5% of the entire student population
- Roughly 65% of the student population resides within the Ozark City Limits



Ten Year Forecast by Grade Level – Mid Level Projection

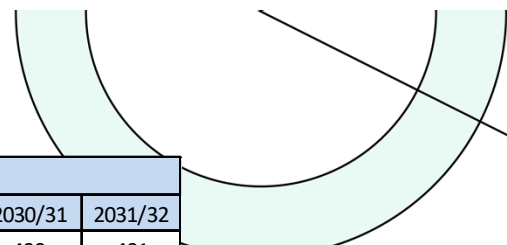
Year (Oct.)	K	1st	2nd	3rd	4th	5th	6th	7th	8th	9th	10th	11th	12th	K-12 Total	K-12 Total Growth
2016/17	428	442	409	427	422	475	427	438	405	455	438	415	398	5,579	
2017/18	425	441	462	415	441	443	495	444	432	422	451	433	423	5,727	148
2018/19	432	434	451	469	418	455	447	487	459	425	426	449	435	5,787	60
2019/20	411	410	443	450	458	431	462	445	497	457	416	428	446	5,754	-33
2020/21	419	409	401	427	453	453	435	457	455	480	465	433	430	5,717	-37
2021/22	477	438	419	421	446	492	483	458	483	457	472	484	417	5,947	230
2022/23	483	499	463	427	437	467	499	490	468	483	455	477	481	6,128	181
2023/24	502	522	521	472	444	455	483	516	505	475	484	460	474	6,313	185
2024/25	511	533	549	534	493	465	468	494	529	508	473	484	456	6,497	184
2025/26	523	544	548	567	557	516	477	479	507	533	507	471	481	6,710	213
2026/27	533	557	570	566	591	584	531	490	492	512	532	508	468	6,934	224
2027/28	529	571	559	596	595	619	600	544	503	495	511	532	504	7,158	224
2028/29	541	564	599	586	627	622	636	615	559	507	494	511	528	7,388	230
2029/30	553	579	591	629	615	657	640	653	632	563	506	494	507	7,619	231
2030/31	557	578	592	619	661	645	676	656	671	637	562	506	490	7,851	232
2031/32	570	577	596	610	639	680	663	693	674	676	636	562	502	8,077	226

*Yellow box = largest grade per year
Green box = second largest grade per year*

- Forecast model based upon achieving 350 new homes per year by 2022-2023 school year
- Five year enrollment growth = 987 additional students total enrollment = 6,934



Ten Year Forecast by Grade Level – Mid Level Projections



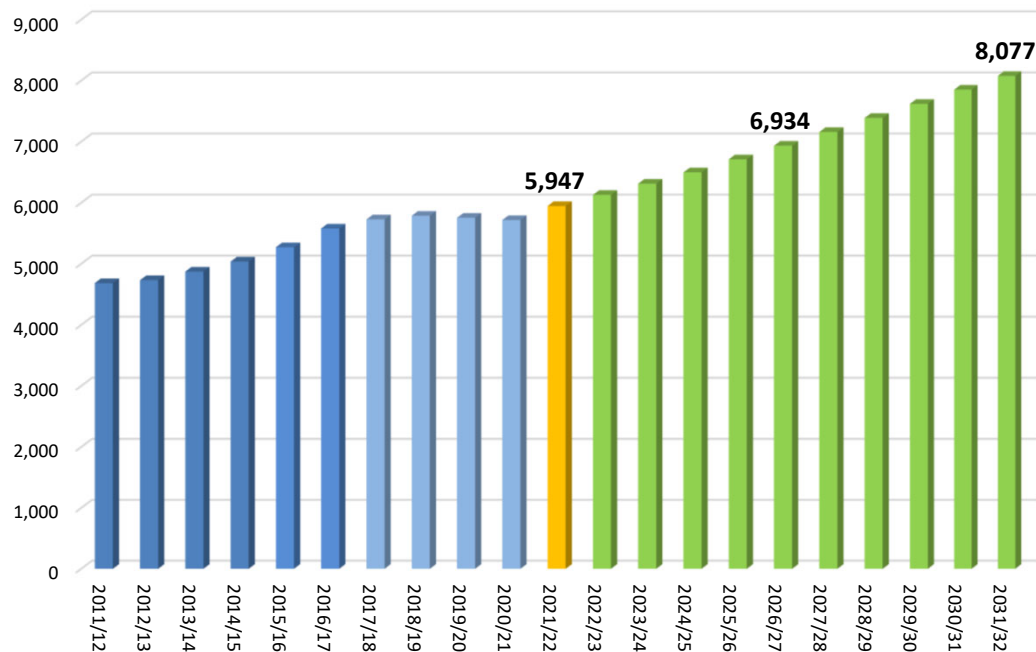
CAMPUS	Capacity	ENROLLMENT PROJECTIONS										
		2021/22	2022/23	2023/24	2024/25	2025/26	2026/27	2027/28	2028/29	2029/30	2030/31	2031/32
Early Childhood Center		208	400	400	400	400	400	400	400	400	400	401
East Elementary	700	670	555	587	612	632	632	618	612	606	596	568
North Elementary	700	680	602	637	681	729	762	782	814	842	863	876
South Elementary	700	664	552	575	611	617	636	654	670	682	701	714
West Elementary	700	668	599	661	716	762	788	797	820	837	849	833
ELEMENTARY TOTALS (K-4)	2,800	2,682	2,308	2,460	2,620	2,740	2,817	2,850	2,916	2,967	3,009	2,991
Elementary Absolute Change		135	-374	152	159	120	78	33	66	51	42	-18
Elementary Percent Change		5.30%	-13.93%	6.59%	6.47%	4.58%	2.84%	1.17%	2.31%	1.75%	1.41%	-0.58%
Ozark Middle School (5/6)	1,000	941	966	938	933	993	1,115	1,219	1,258	1,297	1,321	1,343
Ozark Junior High (7/8)	1,000	940	958	1,021	1,023	986	982	1,047	1,174	1,285	1,327	1,367
Middle/Junior High Total		1,881	1,924	1,959	1,956	1,979	2,097	2,266	2,432	2,582	2,648	2,710
Middle/JH Absolute Change		54	43	36	-3	22	118	169	166	150	65	63
Middle/JH Percent Change		2.96%	2.28%	1.85%	-0.16%	1.14%	5.96%	8.08%	7.34%	6.17%	2.53%	2.37%
Ozark High School (9-12)	2,000	1,373	1,896	1,893	1,921	1,992	2,020	2,042	2,040	2,070	2,195	2,376
HIGH SCHOOL TOTALS		1,373	1,896	1,893	1,921	1,992	2,020	2,042	2,040	2,070	2,195	2,376
High School Absolute Change		45	523	-3	28	71	28	22	-2	30	125	181
High School Percent Change		3.39%	38.09%	-0.16%	1.48%	3.70%	1.41%	1.09%	-0.10%	1.47%	6.04%	8.25%
DISTRICT TOTALS (K-12)		5,936	6,128	6,313	6,497	6,710	6,934	7,158	7,388	7,619	7,851	8,077
District Absolute Change		234	192	185	184	213	224	224	230	231	232	226
District Percent Change		4.1%	3.2%	3.0%	2.9%	3.3%	3.3%	3.2%	3.2%	3.1%	3.0%	2.9%

*Yellow over capacity



Key Takeaways

Enrollment Projections



- New single family construction surging to over 300 homes per year by 2022
- Ozark has over 300 vacant development lots and 2,300 future lots
- Five year enrollment growth = 987 students putting enrollment over 6,934
- West elementary approaching capacity in 3 years
- North elementary approaching capacity in 3 years
- Ozark Middle approaching capacity in 4 years
- Ozark Junior High approaching capacity in 2 years
- Ozark High approaching in 4 years