

COMPARISON SUMMARY OF ACTUAL ATTENDANCE CURRENT TO PRIOR YEAR

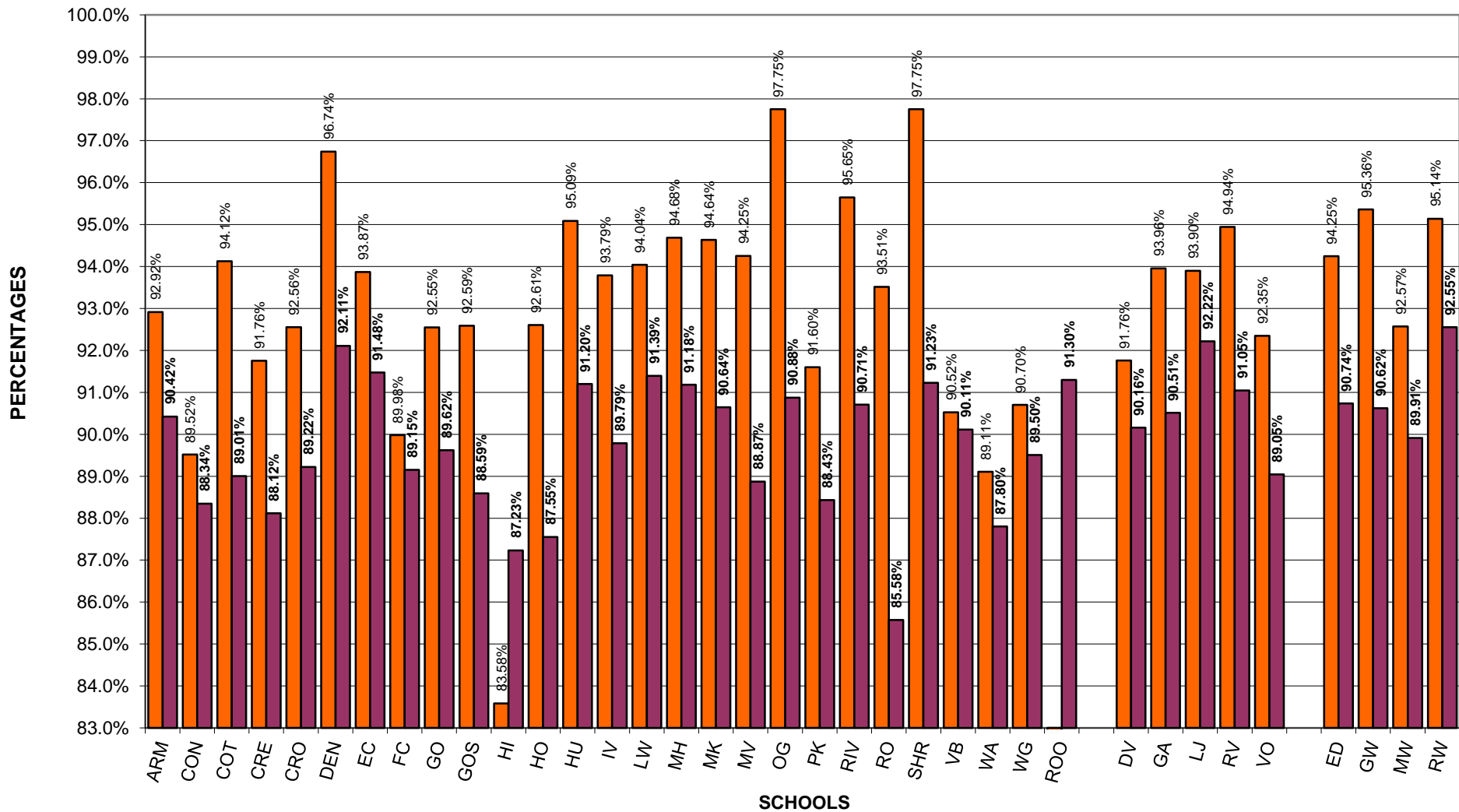
CURRENT TO BASE YEAR MONTH 11

	MONTHLY			CUMULATIVE							
	2020-21	2021-22	BETTER/ WORSE	2018-19	2019-20	BETTER/ WORSE	2020-21	BETTER/ WORSE	2021-22	BETTER/ WORSE	
	% OF ACTUAL	% OF ACTUAL		% OF ACTUAL	% OF ACTUAL		% OF ACTUAL		% OF ACTUAL		
ELEMENTARY											
ANNIE MITCHELL	92.03%	91.18%	-0.86%	95.57%	0.00%	-95.57%	92.92%	92.92%	90.42%	-2.49%	
CONYER	88.36%	90.89%	2.53%	95.43%	0.00%	-95.43%	89.52%	89.52%	88.34%	-1.17%	
COTTONWOOD CRK	90.80%	91.86%	1.06%	95.91%	0.00%	-95.91%	94.12%	94.12%	89.01%	-5.12%	
CRESTWOOD	87.58%	90.77%	3.20%	95.18%	0.00%	-95.18%	91.76%	91.76%	88.12%	-3.64%	
CROWLEY	90.48%	90.40%	-0.08%	96.54%	0.00%	-96.54%	92.56%	92.56%	89.22%	-3.33%	
DENTON	94.93%	93.15%	-1.78%	0.00%	0.00%	0.00%	96.74%	96.74%	92.11%	-4.63%	
ELBOW CREEK	92.29%	92.65%	0.36%	96.18%	0.00%	-96.18%	93.87%	93.87%	91.48%	-2.39%	
FOUR CREEKS	87.96%	89.09%	1.13%	95.31%	0.00%	-95.31%	89.98%	89.98%	89.15%	-0.83%	
GOLDEN OAK	91.47%	91.32%	-0.15%	94.50%	0.00%	-94.50%	92.55%	92.55%	89.62%	-2.93%	
GOSHEN	90.97%	91.38%	0.41%	95.07%	0.00%	-95.07%	92.59%	92.59%	88.59%	-4.00%	
HIGHLAND	84.09%	89.82%	5.73%	94.88%	0.00%	-94.88%	83.58%	83.58%	87.23%	3.65%	
HOUSTON	91.41%	90.21%	-1.20%	95.56%	0.00%	-95.56%	92.61%	92.61%	87.55%	-5.05%	
HURLEY	94.06%	90.43%	-3.63%	96.55%	0.00%	-96.55%	95.09%	95.09%	91.20%	-3.89%	
IVANHOE	91.62%	90.19%	-1.42%	95.25%	0.00%	-95.25%	93.79%	93.79%	89.79%	-4.00%	
LINWOOD	93.43%	93.03%	-0.39%	96.03%	0.00%	-96.03%	94.04%	94.04%	91.39%	-2.65%	
MANUEL HERNANDEZ	93.05%	90.80%	-2.25%	96.03%	0.00%	-96.03%	94.68%	94.68%	91.18%	-3.50%	
MINERAL KING	91.04%	92.74%	1.71%	95.88%	0.00%	-95.88%	94.64%	94.64%	90.64%	-3.99%	
MT. VIEW	92.12%	92.83%	0.70%	96.01%	0.00%	-96.01%	94.25%	94.25%	88.87%	-5.38%	
OAK GROVE	96.70%	90.55%	-6.15%	96.48%	0.00%	-96.48%	97.75%	97.75%	90.88%	-6.88%	
PINKHAM	87.87%	89.78%	1.91%	94.66%	0.00%	-94.66%	91.60%	91.60%	88.43%	-3.16%	
RIVERWAY	93.10%	90.84%	-2.26%	95.54%	0.00%	-95.54%	95.65%	95.65%	90.71%	-4.94%	
ROYAL OAKS	93.34%	87.67%	-5.67%	94.80%	0.00%	-94.80%	93.51%	93.51%	85.58%	-7.94%	
SHANNON RANCH	96.36%	93.63%	-2.72%	96.05%	0.00%	-96.05%	97.75%	97.75%	91.23%	-6.52%	
VEVA BLUNT	88.29%	90.88%	2.59%	94.71%	0.00%	-94.71%	90.52%	90.52%	90.11%	-0.41%	
WASHINGTON	87.78%	89.51%	1.73%	95.12%	0.00%	-95.12%	89.11%	89.11%	87.80%	-1.30%	
WILLOW GLEN	86.89%	91.47%	4.58%	95.17%	0.00%	-95.17%	90.70%	90.70%	89.50%	-1.20%	
ROYAL OAKS ONLINE	0.00%	90.95%	90.95%	0.00%	0.00%	0.00%	0.00%	0.00%	91.30%	91.30%	
MIDDLE SCHOOL											
DIVISADERO	91.74%	94.50%	2.76%	94.76%	0.00%	-94.76%	91.76%	91.76%	90.16%	-1.60%	
GREEN ACRES	91.84%	92.34%	0.50%	96.13%	0.00%	-96.13%	93.96%	93.96%	90.51%	-3.44%	
LA JOYA	92.74%	93.81%	1.07%	96.14%	0.00%	-96.14%	93.90%	93.90%	92.22%	-1.68%	
RIDGEVIEW	94.68%	93.52%	-1.16%	96.48%	0.00%	-96.48%	94.94%	94.94%	91.05%	-3.89%	
VALLEY OAK	91.10%	89.90%	-1.20%	94.88%	0.00%	-94.88%	92.35%	92.35%	89.05%	-3.30%	
HIGH SCHOOL											
EL DIAMANTE	93.83%	89.84%	-3.98%	95.16%	0.00%	-95.16%	94.25%	94.25%	90.74%	-3.51%	
GOLDEN WEST	93.67%	90.61%	-3.05%	95.31%	0.00%	-95.31%	95.36%	95.36%	90.62%	-4.74%	
MT. WHITNEY	87.83%	91.51%	3.68%	95.43%	0.00%	-95.43%	92.57%	92.57%	89.91%	-2.66%	
REDWOOD	90.22%	88.37%	-1.85%	96.25%	0.00%	-96.25%	95.14%	95.14%	92.55%	-2.59%	
EDUCATIONAL OPTIONS											
	Cumulative District Total Avg to date						93.59%		90.28%	-3.31%	
CHARTER HOME	98.18%	99.61%	1.43%	97.36%	0.00%	-97.36%	98.73%	98.73%	98.12%	-0.61%	
GLOBAL LEARNING	92.33%	92.84%	0.51%	95.67%	0.00%	-95.67%	92.55%	92.55%	90.75%	-1.81%	
INDEPENDENT STY	88.45%	93.45%	4.99%	94.51%	0.00%	-94.51%	91.85%	91.85%	93.86%	2.02%	
VTEC	92.64%	90.41%	-2.23%	94.99%	0.00%	-94.99%	94.32%	94.32%	90.57%	-3.76%	
CREEKSIDE	64.29%	79.75%	15.47%	0.00%	0.00%	0.00%	64.18%	64.18%	66.73%	2.55%	

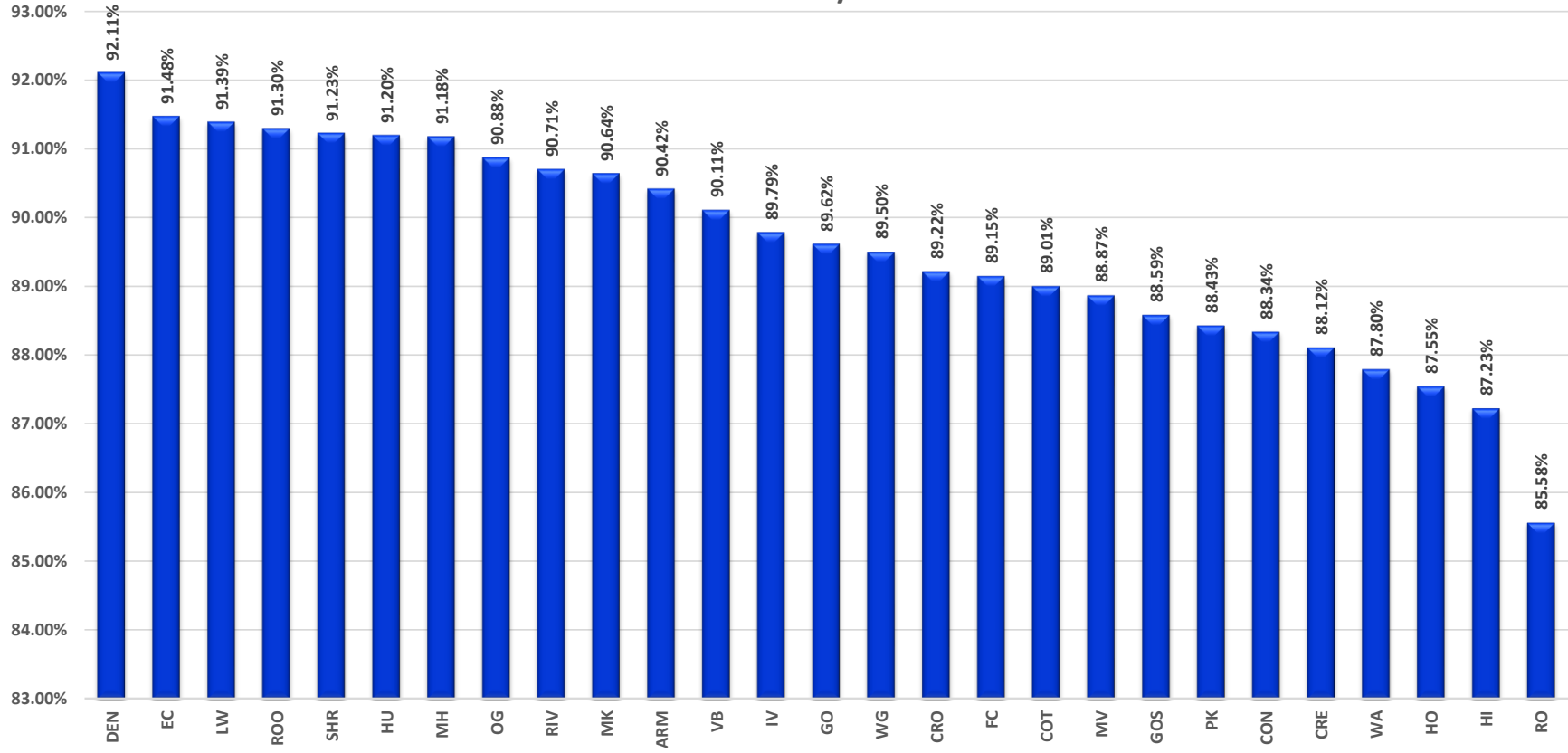
PERCENT OF ACTUAL ATTENDANCE

2021-22 Month 11

2020-21 2021-22

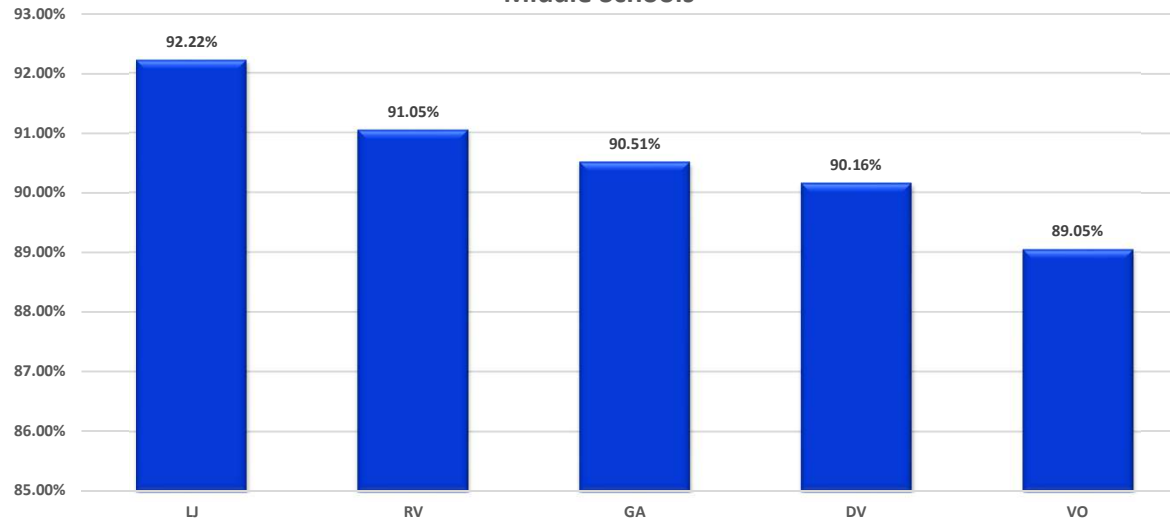


21-22 Month 11 Cumulative Actual Elementary Schools



Elementary Schools

**21-22 Month 11
Cumulative Actual
Middle Schools**



**21-22 Month 11
Cumulative Actual
High Schools**

