

# ISD 622 - Phase One Facilities Plan **Richardson Elementary Renovation**

## **Neighborhood Meeting**

Christine Osorio - Superintendent

July 26, 2018



School District 622

NORTH ST. PAUL | MAPLEWOOD | OAKDALE

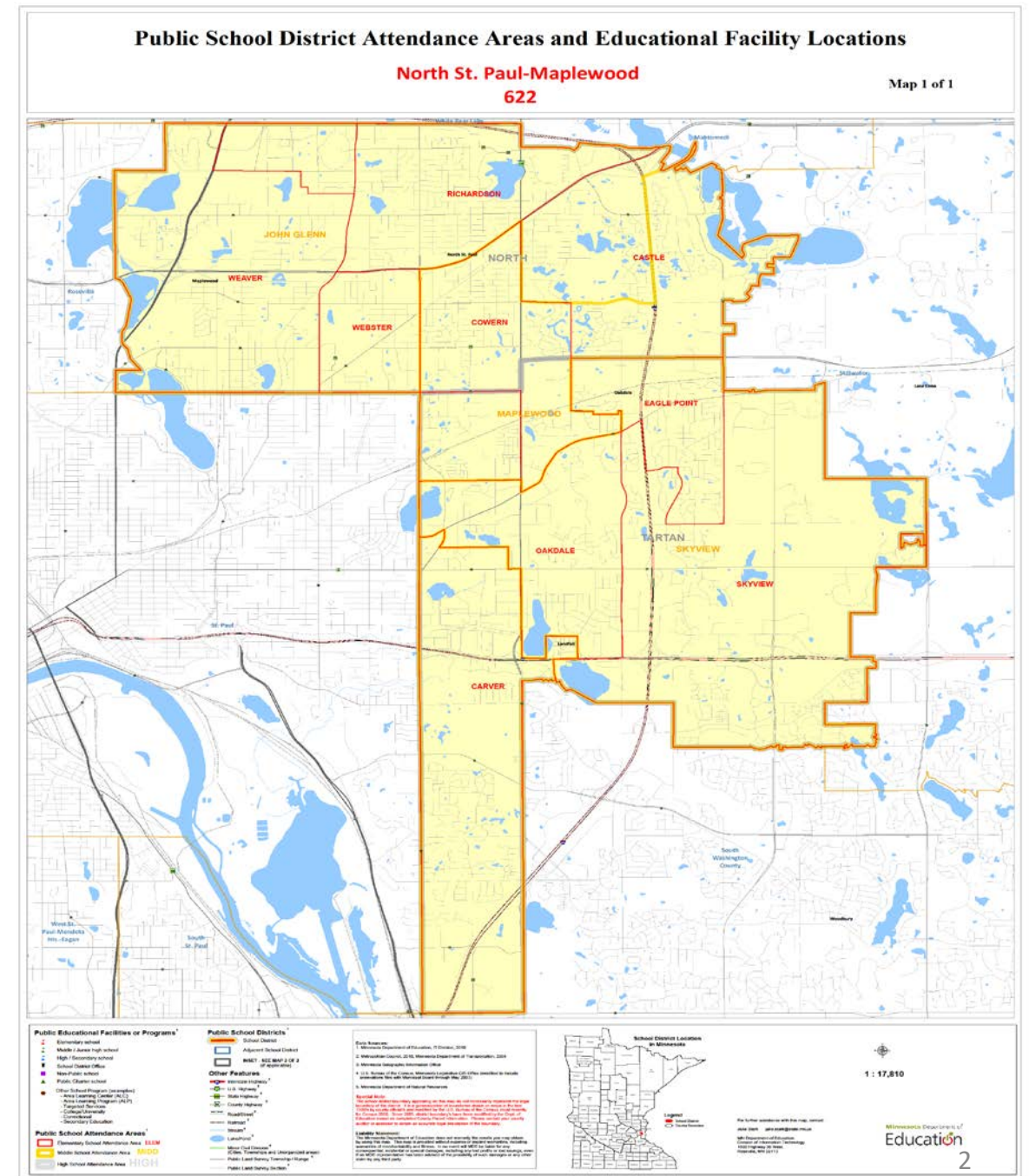
*Ready for tomorrow*

# ISD #622 Geography 42 Square Miles

# Ramsey and Washington Counties

Geographic Boundaries include all, or portions of, seven communities including: North St. Paul, Maplewood, Oakdale, Lake Elmo, Landfall, Pine Springs, and Woodbury

- 10,600 Students
- 2 High Schools
- 3 Middle Schools
- 9 Elementary Schools
- Early childhood center, alternative learning, special education transition center, senior center



# Facility Audits Completed Fall 2016

Building Tours and Meetings with Staff

Code Reviews

Building Reclassification and Storm Water Management

Updated Site Safety and Security Plans

Operations and Maintenance Review

Study of Energy Consumption and Cost

# 622 Facilities Concerns

Energy Costs

Elementary Space Needs

Safety and Security

Traffic Flow

Increased Personalized Learning

# Review of Elementary Space Challenges

Buildings designed in a different era before schools provided supports and interventions

Principals giving up office spaces for interventions

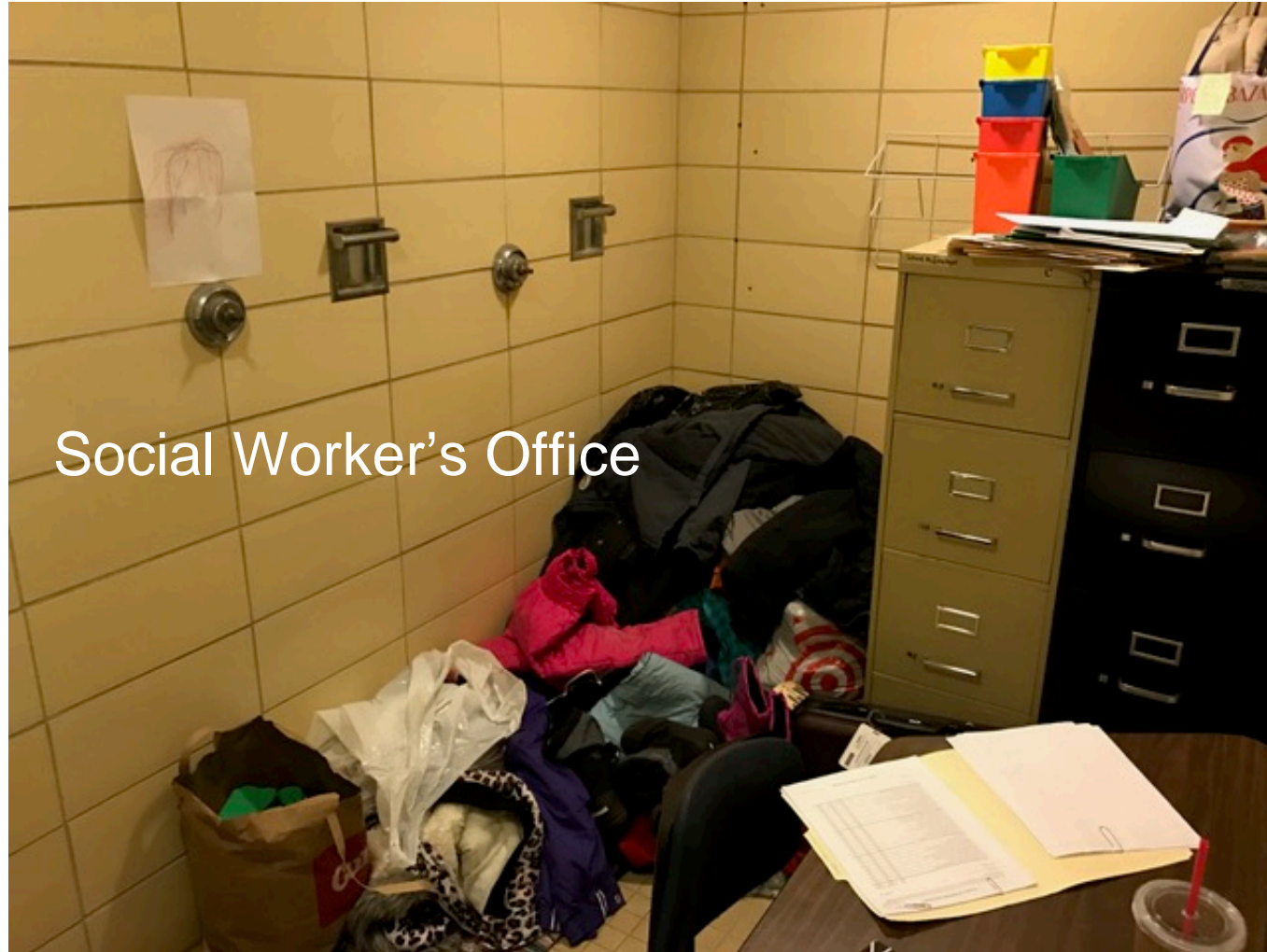
Many intervention spaces were not designed for student use

A look at some  
facilities examples...



# Repurposed Shower Stalls

## Social Worker & Principal Work Space



Social Worker's Office



Principal's office three days per week.



# School Library on a Stage

## Intervention in Basement Storage Room





# Electrical Closet Used as an Intervention Space





# Overcrowded Spaces





# Schools Creating Intervention Spaces Out of Open Areas

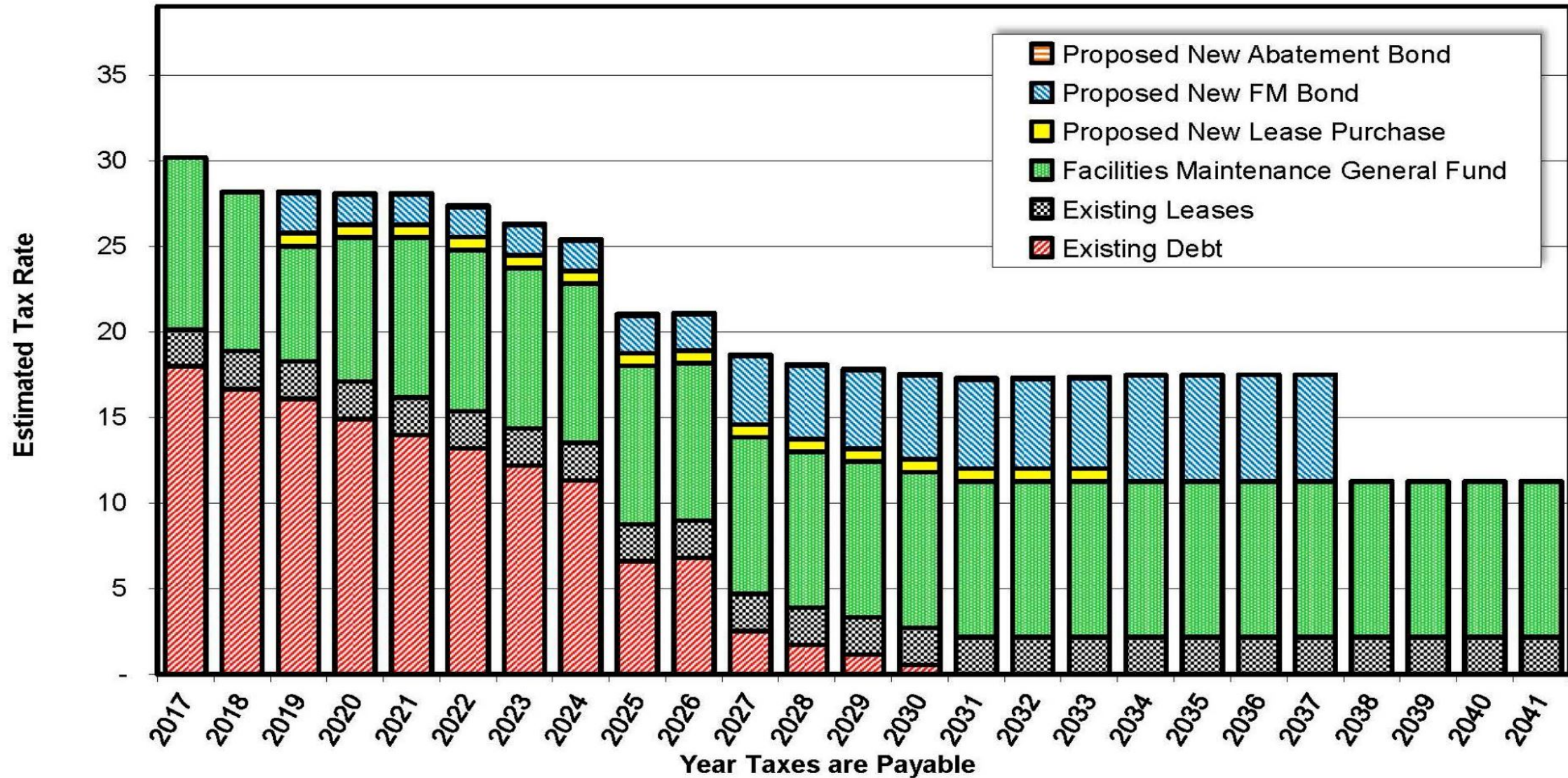


# Facility Disrepair





# Financial Opportunity – 622 Debt Forecast



# Examples of Available Facilities Funding

- Long-term facilities bonds
- Lease levy bonds
- Capital facilities bonds
- Capital funds
- Long-term facilities “pay as you go” levy funds



# **Recommendations for Phase 1 Facilities Plan**

## **1. Go slow**

Postpone the conversation of grade reconfiguration for now. Attempt to address overcrowding issues through other means first.

## **2. Begin planning for elementary boundary changes**

(Potentially for Fall of 2020)

Study enrollment trends and housing development plans to reconfigure elementary boundaries for more equitable distribution of students.

## **3. Coordinate building renovation with enrollment planning**

Begin with elementary schools *where additional enrollment is needed*; next consider upgrades to secondary spaces to *align with strategic plan* and personalized learning.

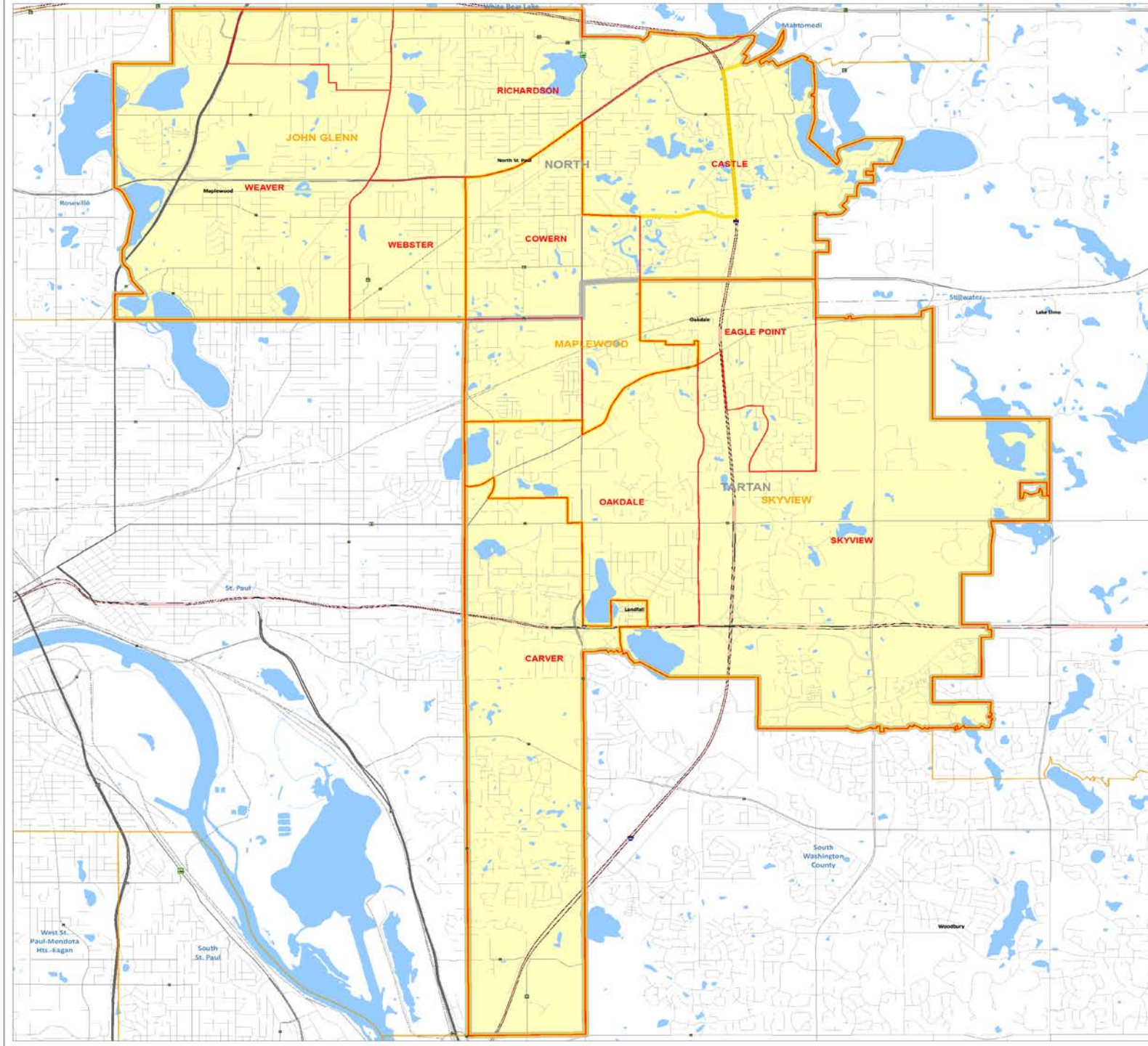
## **4. Prioritize minimal impact to taxpayers**

Goal will be to build construction plans *without* raising taxes, thanks to our positive debt forecast. If, in the future, we do go out to taxpayers for a bond, we should attempt to keep taxes flat if possible.





**Why begin  
with  
Castle  
and  
Richardson?**





**Built in 1954**

**Before**

**After**



Scan me

**Safety Updates**  
Enhanced secured entrances  
Added security fencing  
New emergency response system

**Mechanical and Electrical System Updates**  
Increased energy efficiencies  
Improved air quality  
Improved lighting

**Outside Site Improvements**  
New parent pick-up/drop-off area  
New bus lane  
Increased parking  
Field/play areas improvements

**Building Renovation and Expansion**  
Classroom renovations and expansion  
Flexible learning spaces  
Restroom additions and renovation  
Roof replacement



"We are thrilled that renovations are coming to our school. The updates to Richardson will have a positive impact on student learning and on our school community."

*-Principal Jenna Peters*

**Richardson construction  
begins  
Fall 2018**

**Richardson  
construction concludes  
December 2019**

**#readyfortomorrow**

For the latest information, please visit [www.isd622.org/facilitiesplan](http://www.isd622.org/facilitiesplan)



**School District 622**

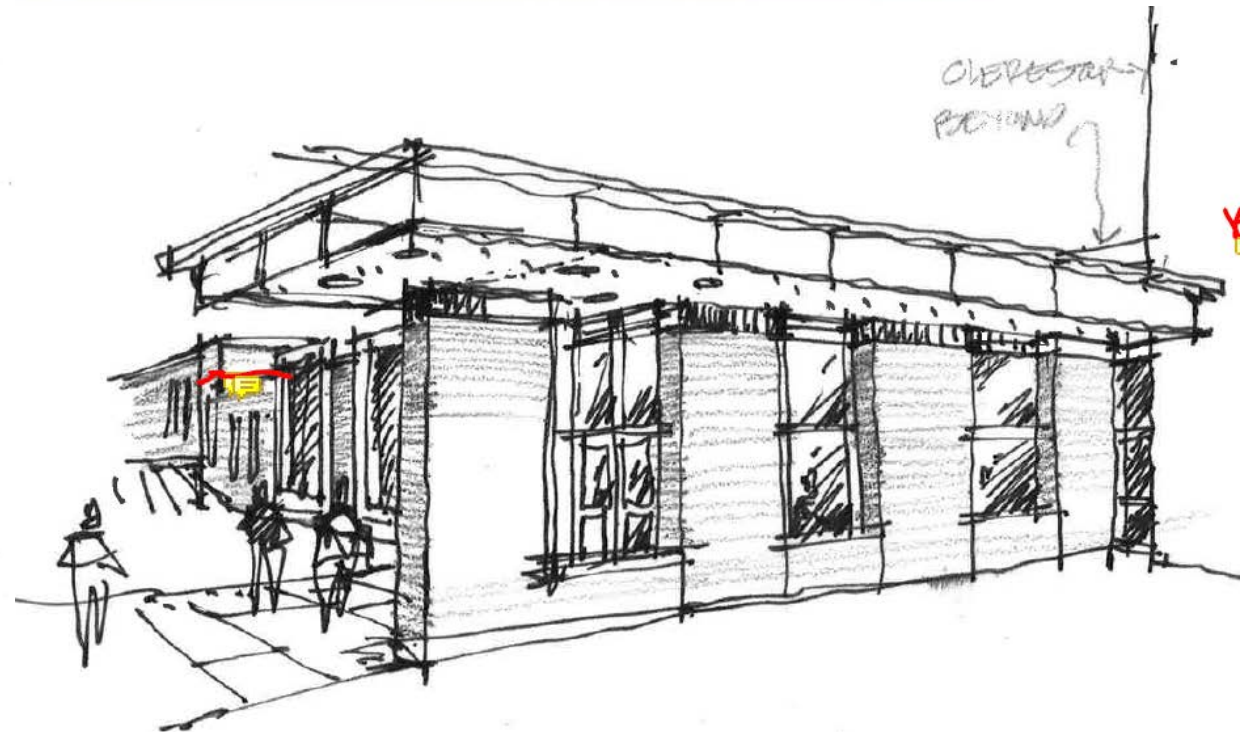
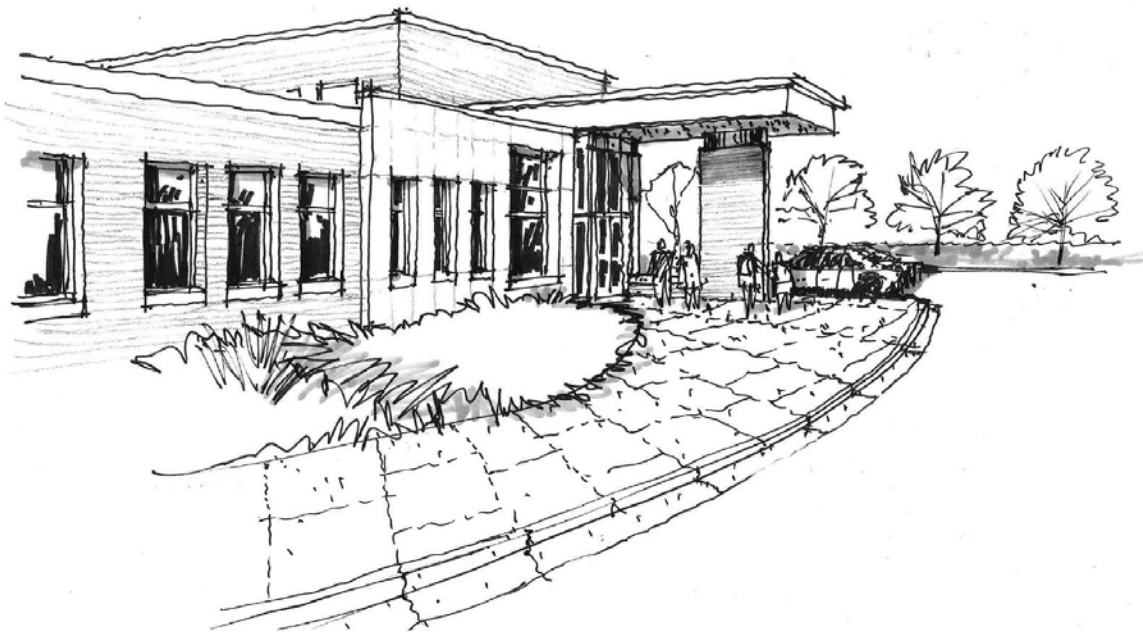
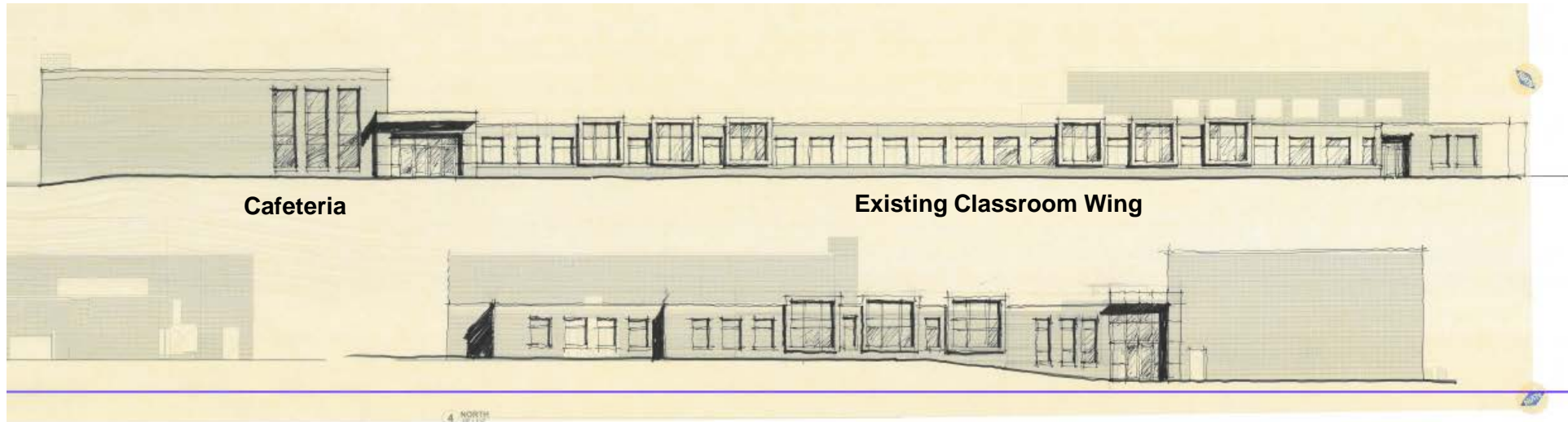
NORTH ST. PAUL | MAPLEWOOD | OAKDALE

*Ready for tomorrow*









# Current Facilities Meetings

Richardson		Castle	
Staff	May 9	Staff	April 19
Parents	May 10	Board Walkthrough	April 24
City Council	May 15	Parents	May 1
Board Walkthrough	May 22	City Council	May 8
Neighborhood Meeting	July 26	Neighborhood Meeting	July 31





# Richardson Proposed Construction Timing

Temporary Construction Access / Fencing	August 2018
Project Bidding	Late November 2018
Addition Construction	January 2019 to August 2019
Phase 1 Interior Renovations	June 2019 to August 2019
Phase 2 Interior Renovations	August 2019 to December 2019



# Richardson Proposed Construction Timing



we exist to build a better tomorrow

Richardson Elementary School	2018					2019											
	Aug	Sept	Oct	Nov	Dec	Jan	Feb	March	April	May	June	July	Aug	Sept	Oct	Nov	Dec
Temporary Site Provisions & Fencing																	
Sitework / Footing & Foundations																	
Addition Construction																	
Interior Remodel																	
Sitework																	
Completion																	



School District 622

NORTH ST. PAUL | MAPLEWOOD | OAKDALE

Ready for tomorrow

# Comments/Discussion

[www.isd622.org/facilitiesplan](http://www.isd622.org/facilitiesplan)



/isd622



/isd622



@isd622



/isd622



School District 622

NORTH ST. PAUL | MAPLEWOOD | OAKDALE

Ready for tomorrow

# Independent School District #622



Classrooms

Administration

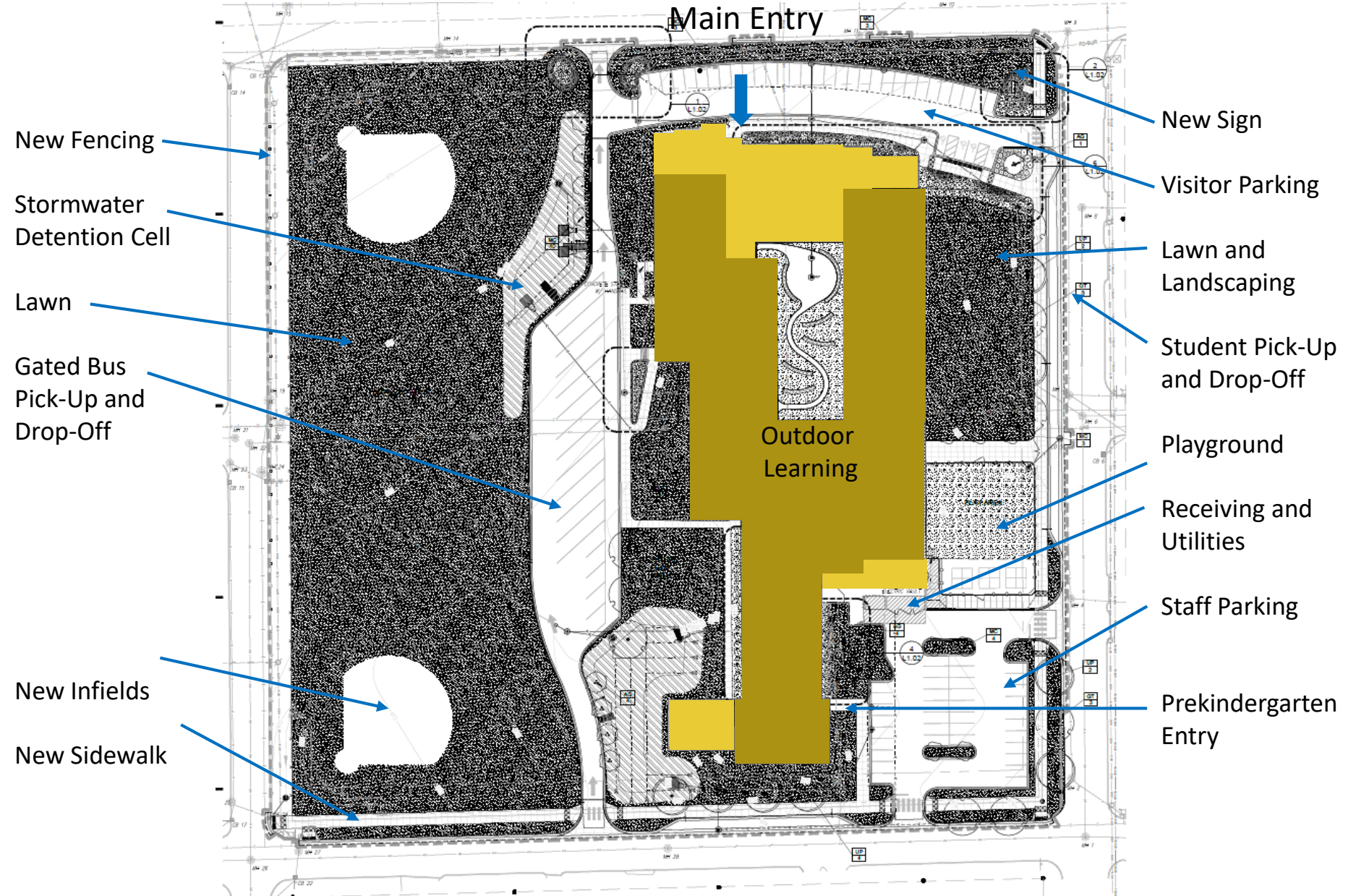
Main Entry

Gym Addition

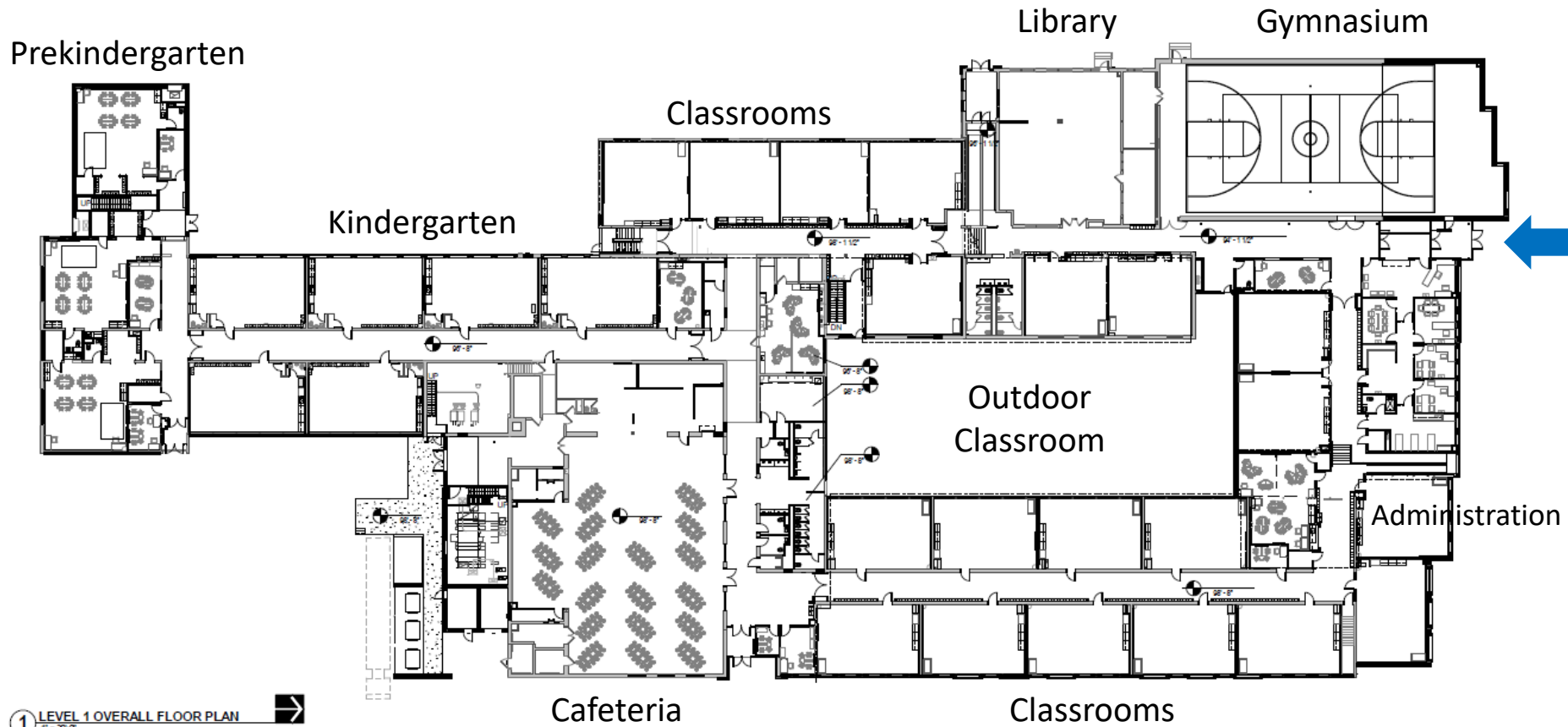
## Richardson Elementary School New Addition and Renovations



# Independent School District #622

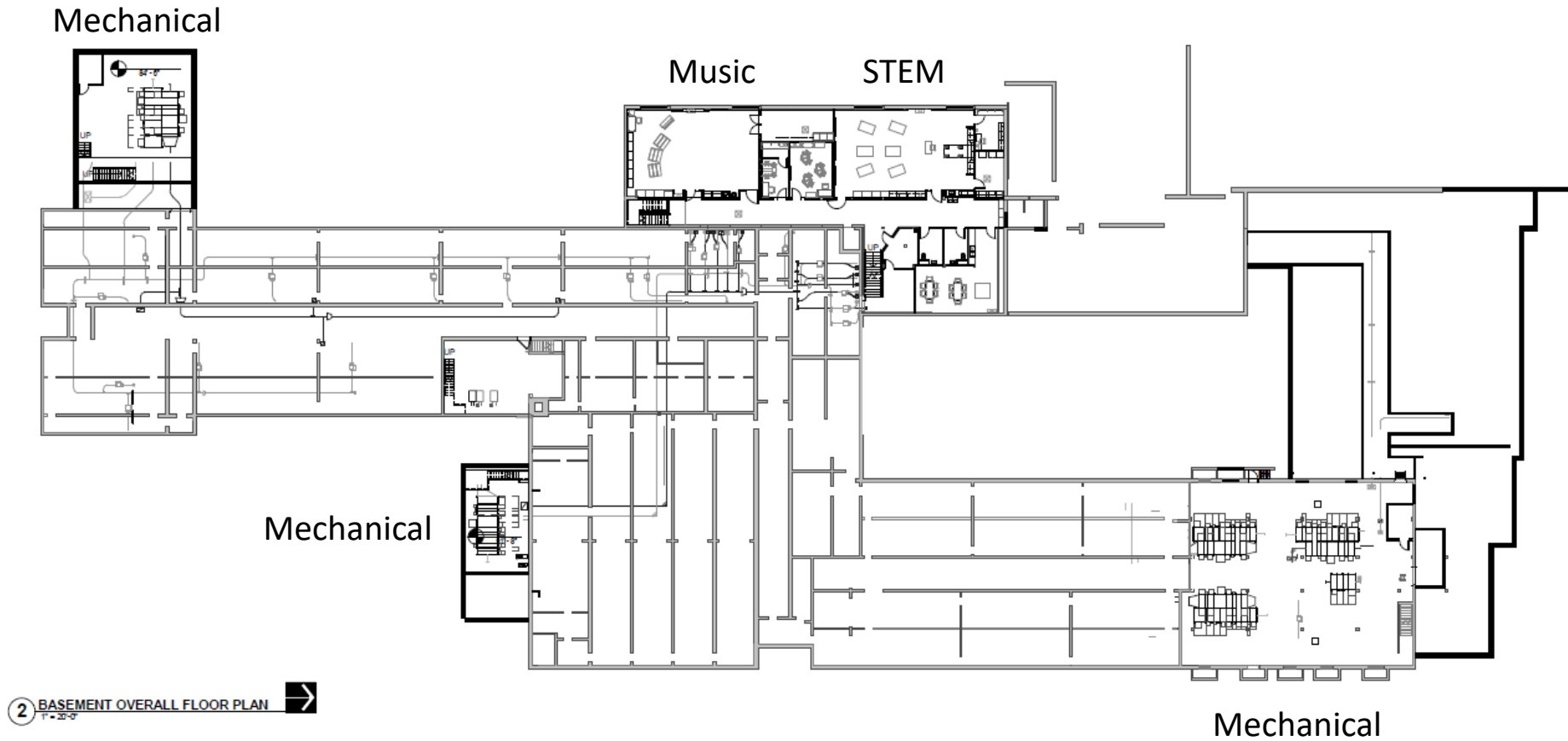


# Independent School District #622



① LEVEL 1 OVERALL FLOOR PLAN  
7'-0" 32'-0"

# Independent School District #622

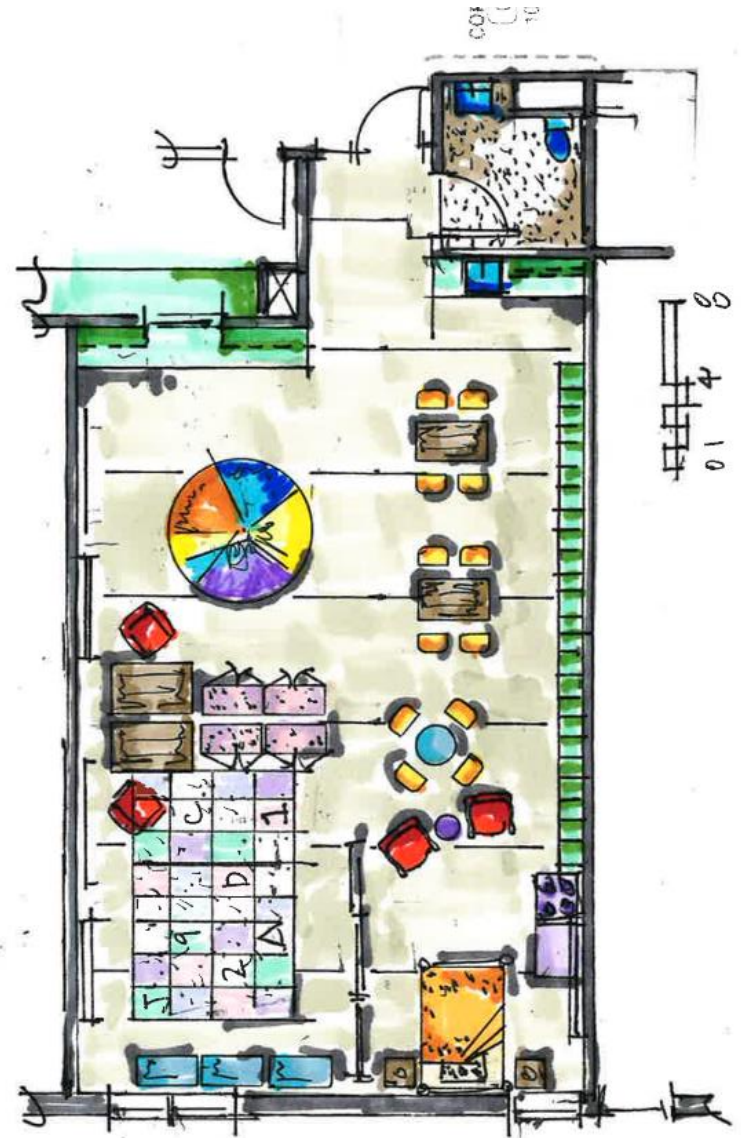




# Independent School District #622

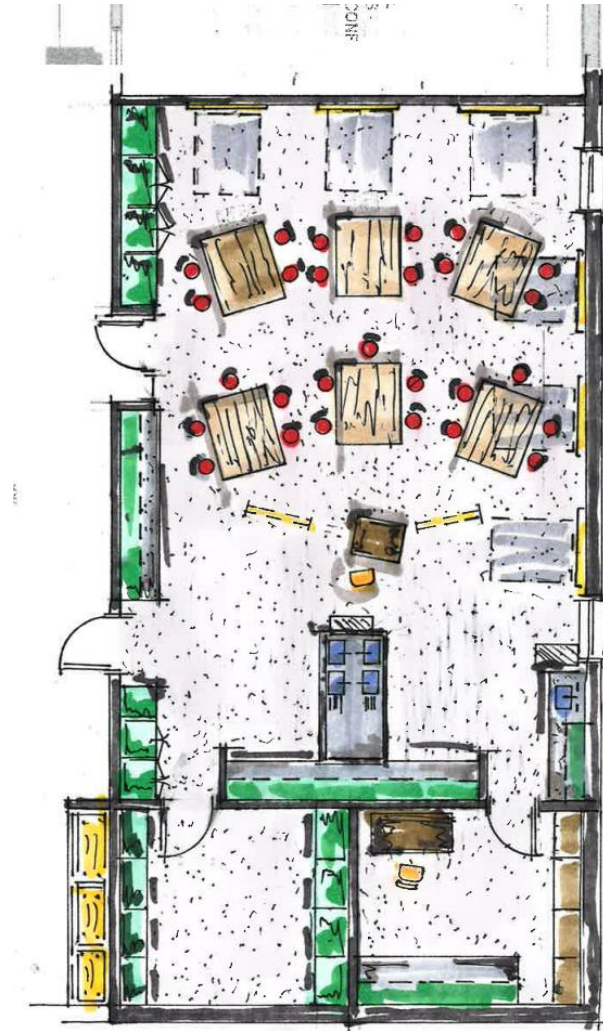
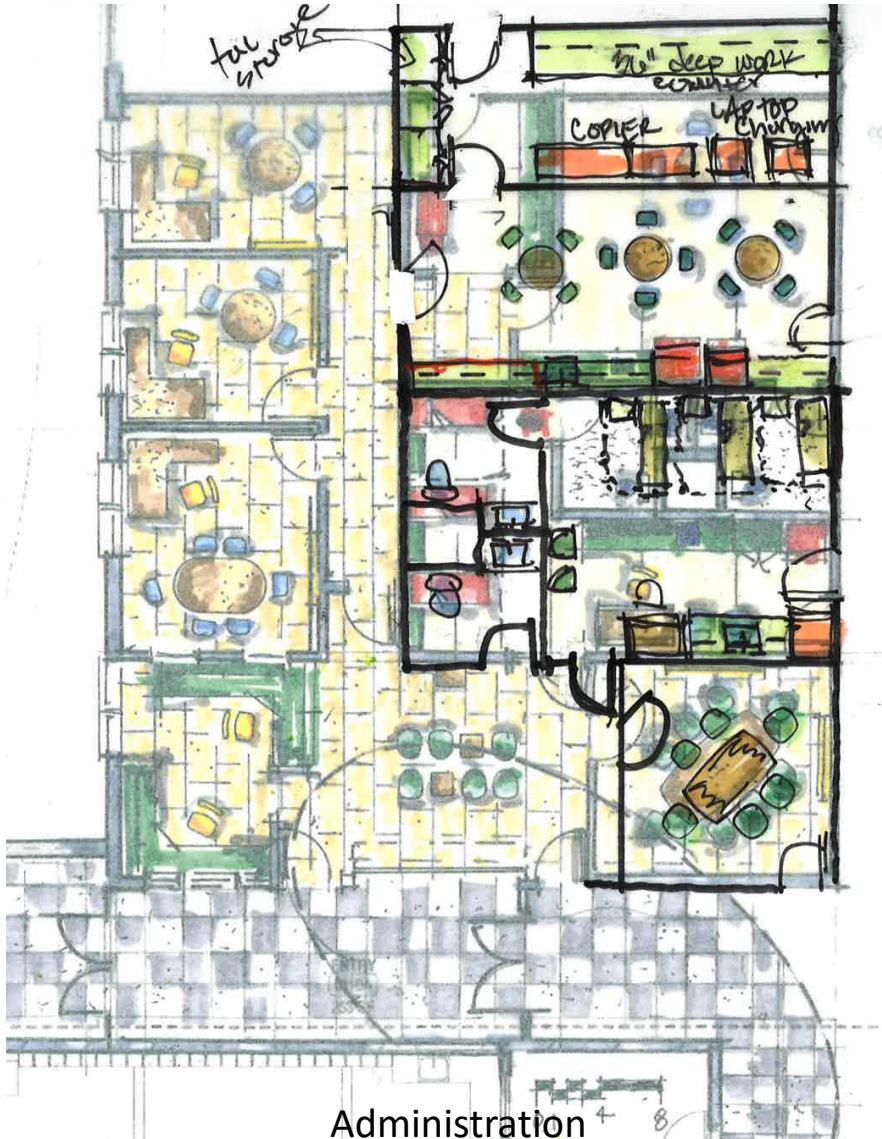


General Classroom



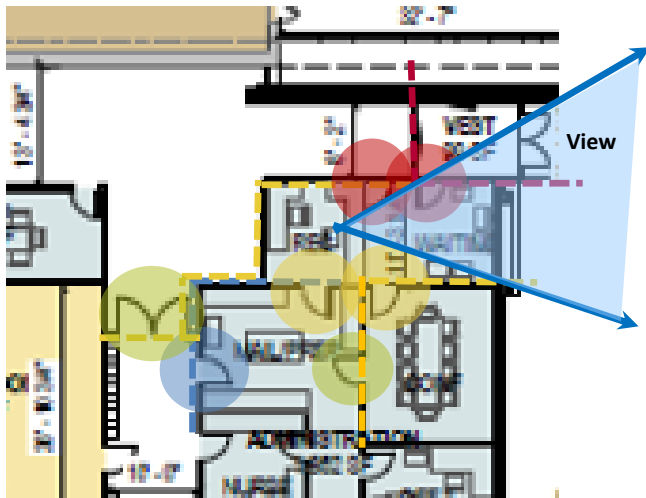
Kindergarten Classroom

# Independent School District #622





# Independent School District #622



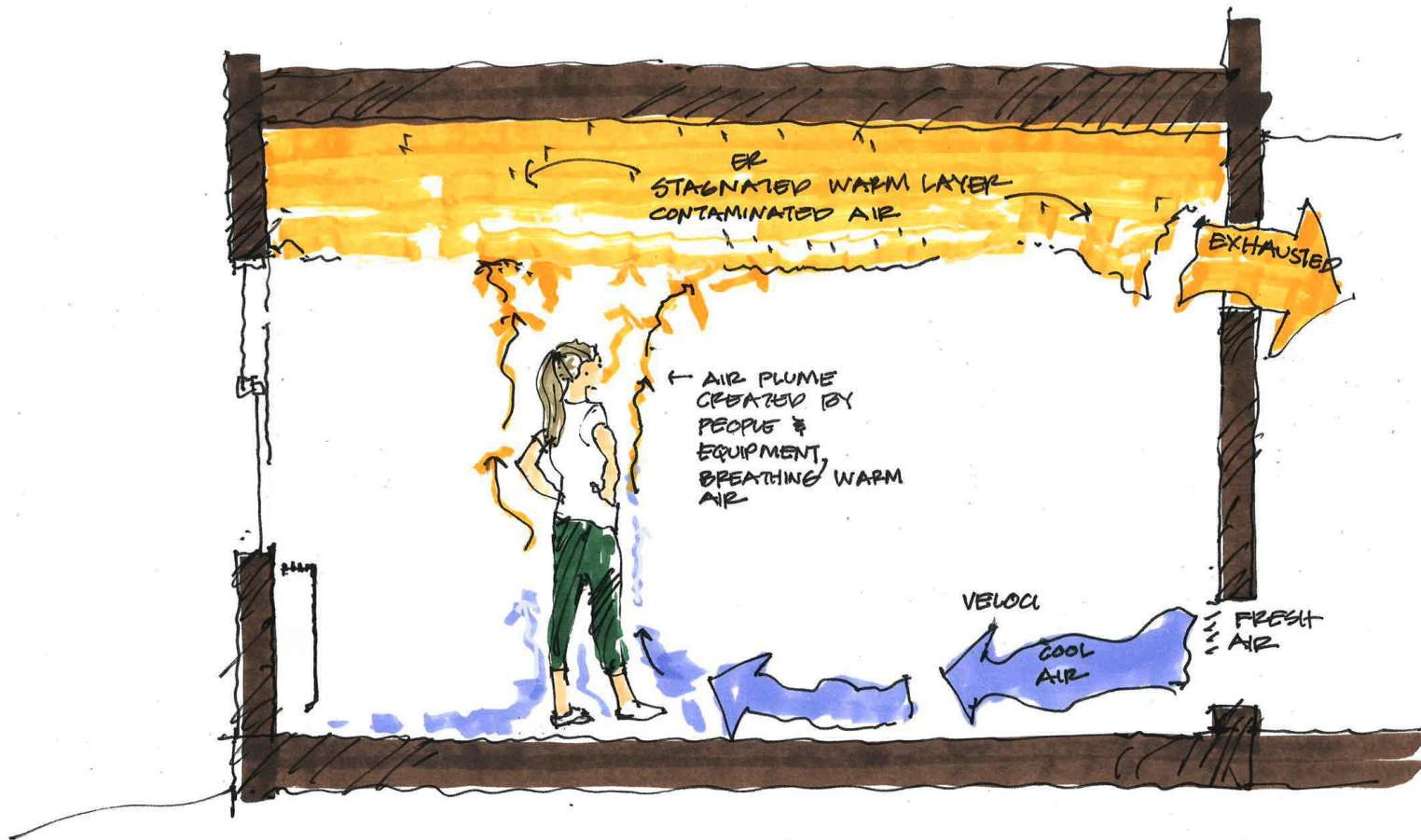
## Safe and Secure Planning

1. School Security differs by grade level
2. Order Of Containment/Access
  - Weather Vestibule
  - Waiting Room/Reception
  - Conference/Meeting Room
  - Administration Space
  - Building Lock-Down – Zone 1
  - Building Lock-Down – Zone 2 - 4
3. Door Hardware Locking in Two Directions
4. Glass Overlay System: Bullet Resistant
5. Glass Darkening: SAGE Systems
6. Visual Sight Lines
7. Size and Location of Glass Panes





# Independent School District #622



## Well Building Design Efforts

- Natural Light and Views to the Outside
- Acoustic Performance
- Thermal Comfort and Indoor Air Quality
- Lighting and Other Considerations



Richardson Elementary School	2018					2019											
	Aug	Sept	Oct	Nov	Dec	Jan	Feb	March	April	May	June	July	Aug	Sept	Oct	Nov	Dec
Temporary Site Provisions & Fencing																	
Sitework / Footing & Foundations																	
Addition Construction																	
Interior Remodel																	
Sitework																	
Completion																	

## Construction Considerations

- Neighborhood Considerations
- Project Phasing
- Student, Staff, and Community Safety
- Learning Opportunities for District Students

# Independent School District #622



## Open Discussion

**Richardson Elementary School**  
New Addition and Renovations