

ISD 622 - Phase One Facilities Plan **Castle Elementary Renovation**

Neighborhood Meeting

Christine Osorio – Superintendent

Troy Miller – Architect, LHB

Patrick Sims – Construction Manager, A&P

July 31, 2018



School District 622

NORTH ST. PAUL | MAPLEWOOD | OAKDALE

Ready for tomorrow

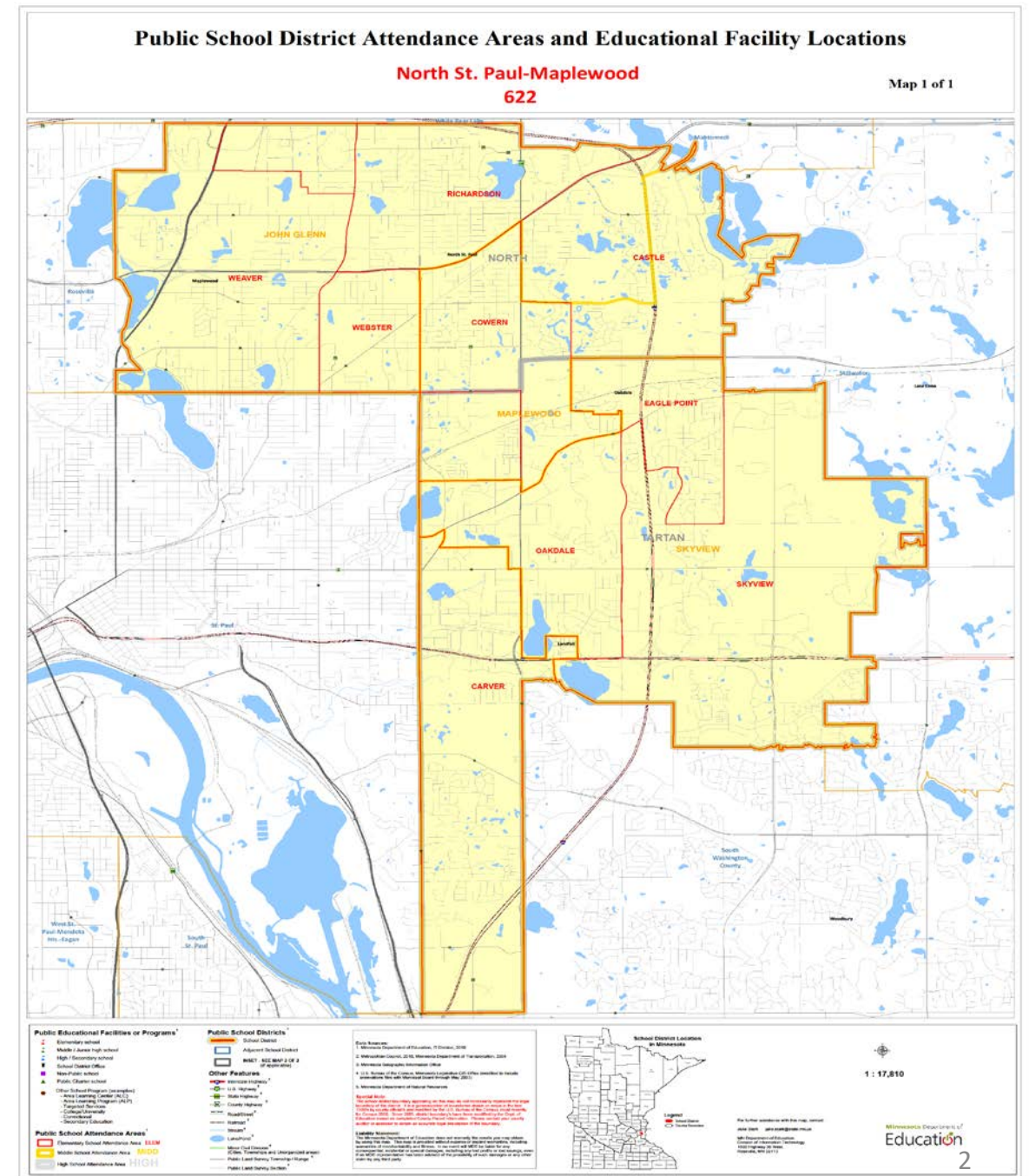
ISD #622 Geography

42 Square Miles

Ramsey and Washington Counties

Geographic Boundaries include all, or portions of, seven communities including: North St. Paul, Maplewood, Oakdale, Lake Elmo, Landfall, Pine Springs, and Woodbury

- 10,600 Students
- 2 High Schools
- 3 Middle Schools
- 9 Elementary Schools
- Early childhood center, alternative learning, special education transition center, senior center



Facility Audits Completed Fall 2016

Building Tours and Meetings with Staff

Code Reviews

Building Reclassification and Storm Water Management

Updated Site Safety and Security Plans

Operations and Maintenance Review

Study of Energy Consumption and Cost

622 Facilities Concerns

Energy Costs

Elementary Space Needs

Safety and Security

Traffic Flow

Increased Personalized Learning

Review of Elementary Space Challenges

Buildings designed in a different era before schools provided supports and interventions

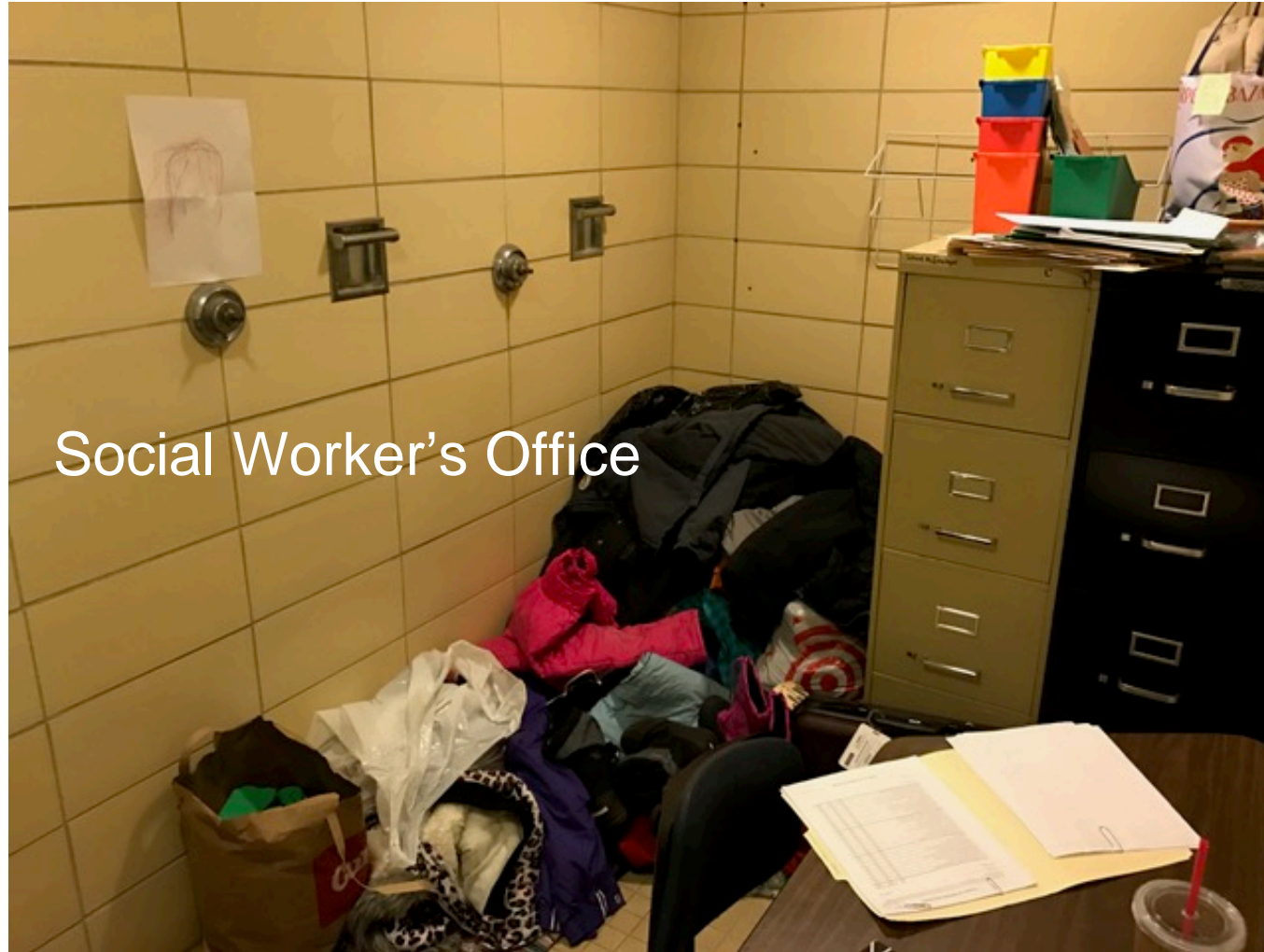
Principals giving up office spaces for interventions

Many intervention spaces were not designed for student use

A look at some
facilities examples...

Repurposed Shower Stalls

Social Worker & Principal Work Space



Social Worker's Office



Principal's office three days per week.

School Library on a Stage

Intervention in Basement Storage Room



Electrical Closet Used as an Intervention Space



Overcrowded Spaces



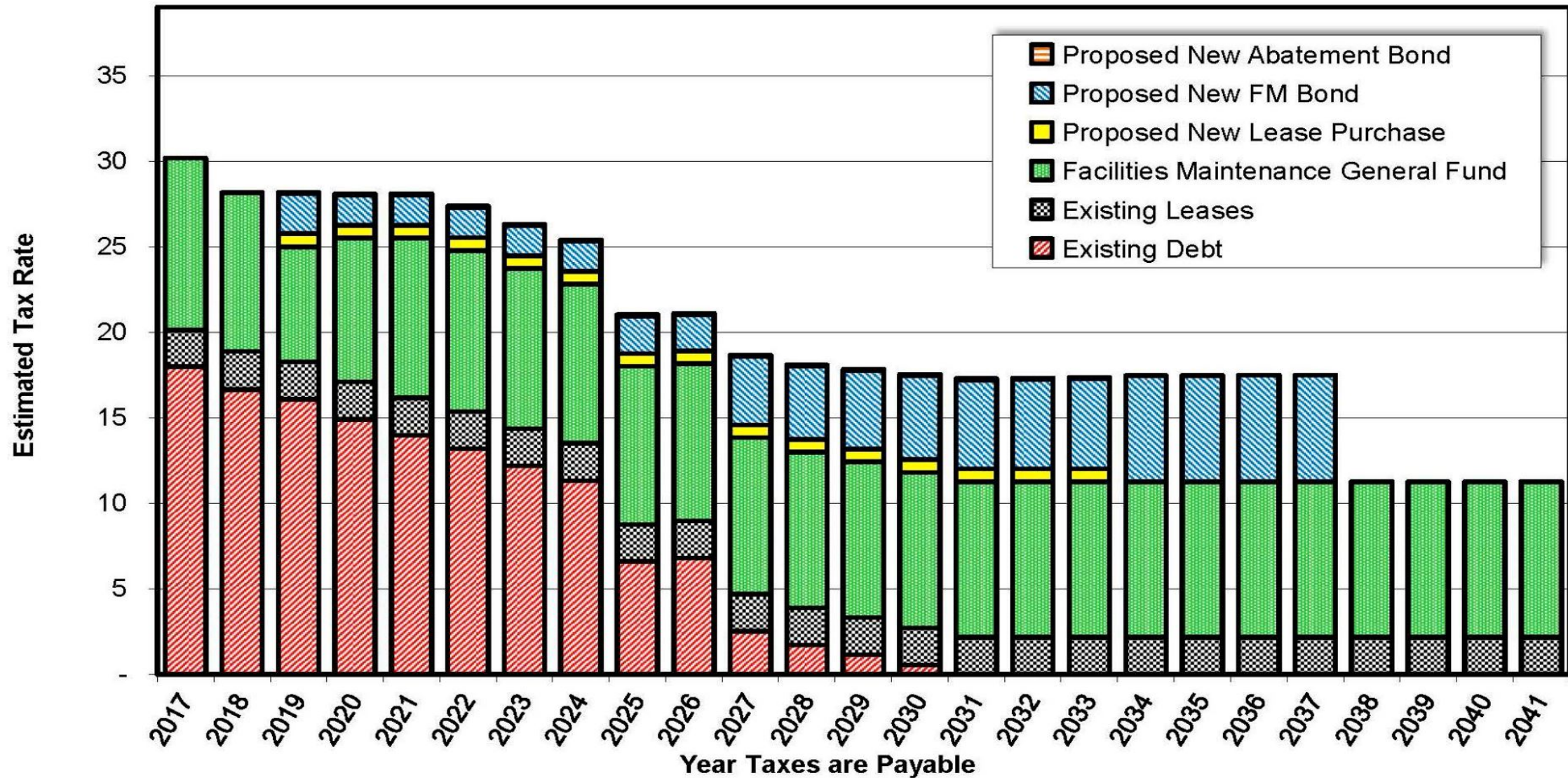
Schools Creating Intervention Spaces Out of Open Areas



Facility Disrepair



Financial Opportunity – 622 Debt Forecast



Examples of Available Facilities Funding

- Long-term facilities bonds
- Lease levy bonds
- Capital facilities bonds
- Capital funds
- Long-term facilities “pay as you go” levy funds



Recommendations for Phase 1 Facilities Plan

1. Go slow

Postpone the conversation of grade reconfiguration for now. Attempt to address overcrowding issues through other means first.

2. Begin planning for elementary boundary changes

(Potentially for Fall of 2020)

Study enrollment trends and housing development plans to reconfigure elementary boundaries for more equitable distribution of students.

3. Coordinate building renovation with enrollment planning

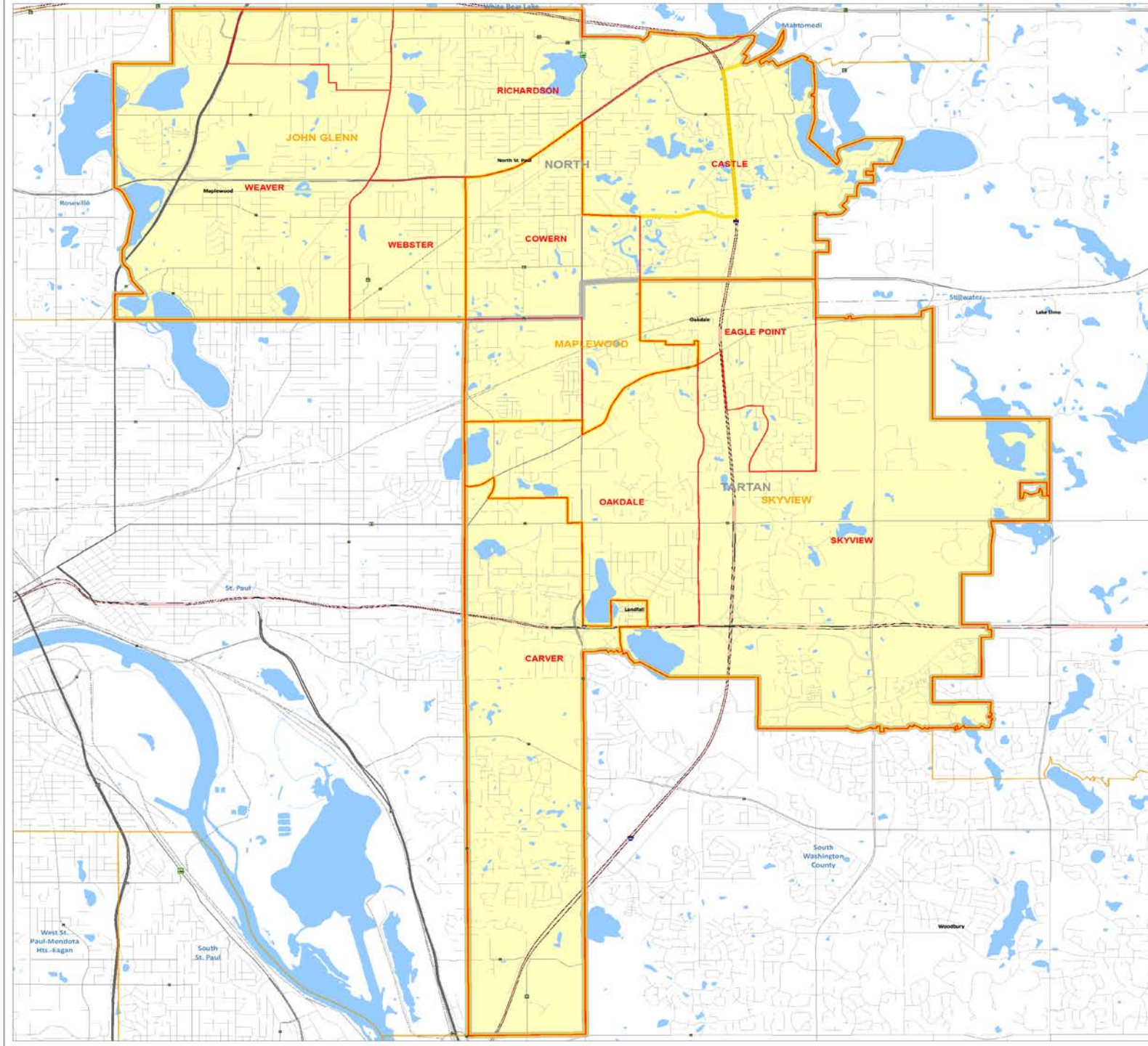
Begin with elementary schools *where additional enrollment is needed*; next consider upgrades to secondary spaces to *align with strategic plan* and personalized learning.

4. Prioritize minimal impact to taxpayers

Goal will be to build construction plans *without* raising taxes, thanks to our positive debt forecast. If, in the future, we do go out to taxpayers for a bond, we should attempt to keep taxes flat if possible.



**Why begin
with
Castle
and
Richardson?**



Built in 1969



Before

After



Safety Updates

- Enhanced secured entrances
- Added security fencing
- New emergency response system

Mechanical and Electrical System Updates

- Increased energy efficiencies
- Improved air quality
- Improved lighting

Outside Site Improvements

- New parent pick-up/drop-off area
- New bus lane
- Increased parking
- Field/play areas improvements

Building Renovation and Expansion

- Classroom renovations and expansion
- Flexible learning spaces
- Restroom additions and renovation
- Roof replacement



"We see the renovations as an opportunity to create space that helps us to meet the hopes and dreams of our community. We believe that the updates to our building will allow us to offer unique programming that meets the needs of our students."

-Principal Bridget Bruner

Castle construction begins

Fall 2018

**Castle construction
concludes**

December 2019

#readyfortomorrow

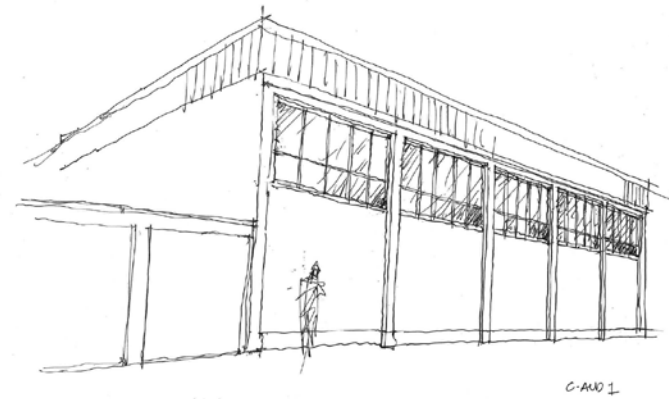
For the latest information, please visit www.isd622.org/facilitiesplan



School District 622

NORTH ST. PAUL | MAPLEWOOD | OAKDALE

Ready for tomorrow

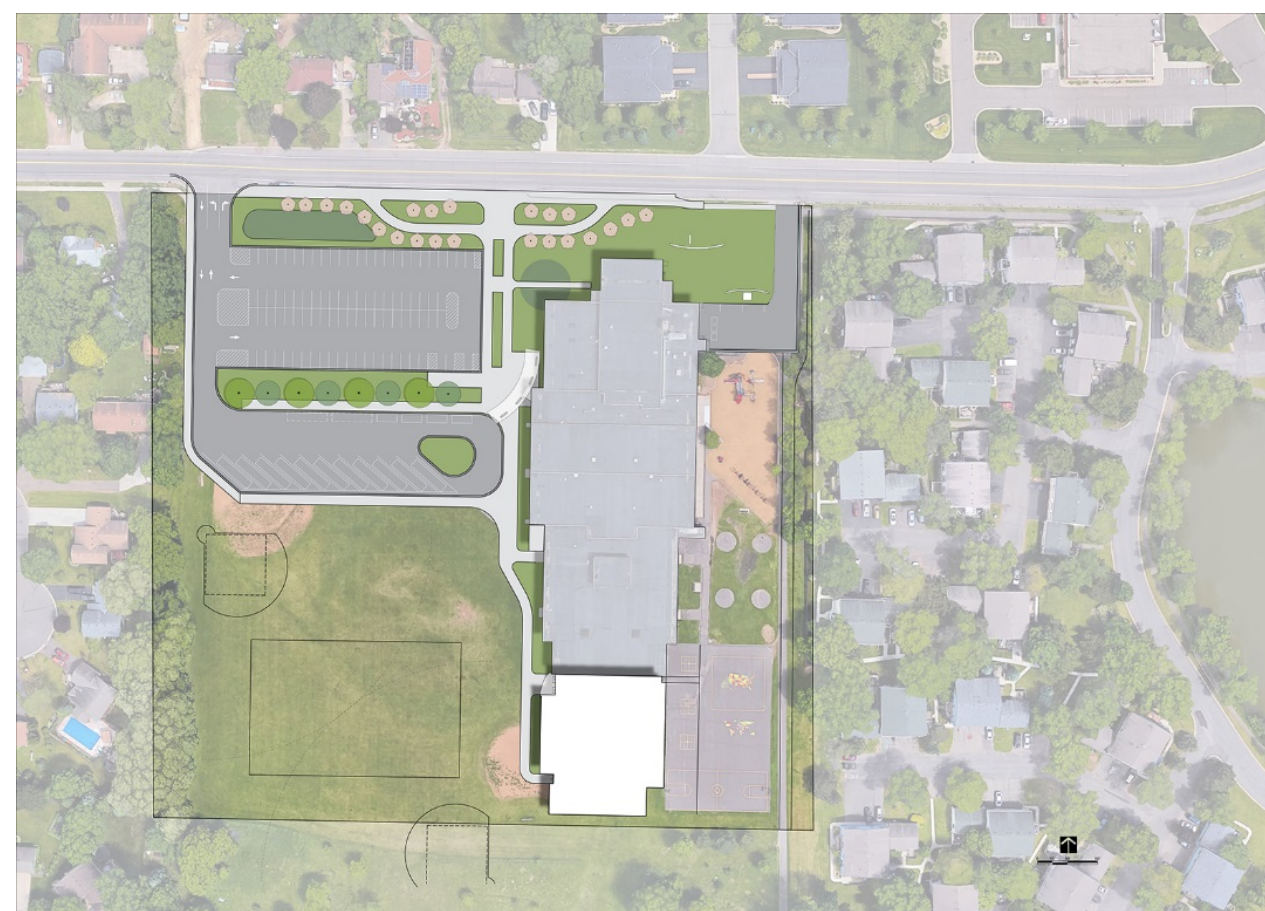




Existing Site Plan

Challenges Addressed

- 1. Traffic Congestion and Conflicts**
 - i. Busses
 - ii. Parking
 - iii. Pick-Up and Drop-Off
 - iv. Students
- 2. Stormwater Management Systems**
- 3. Site Fencing and Student Safety**

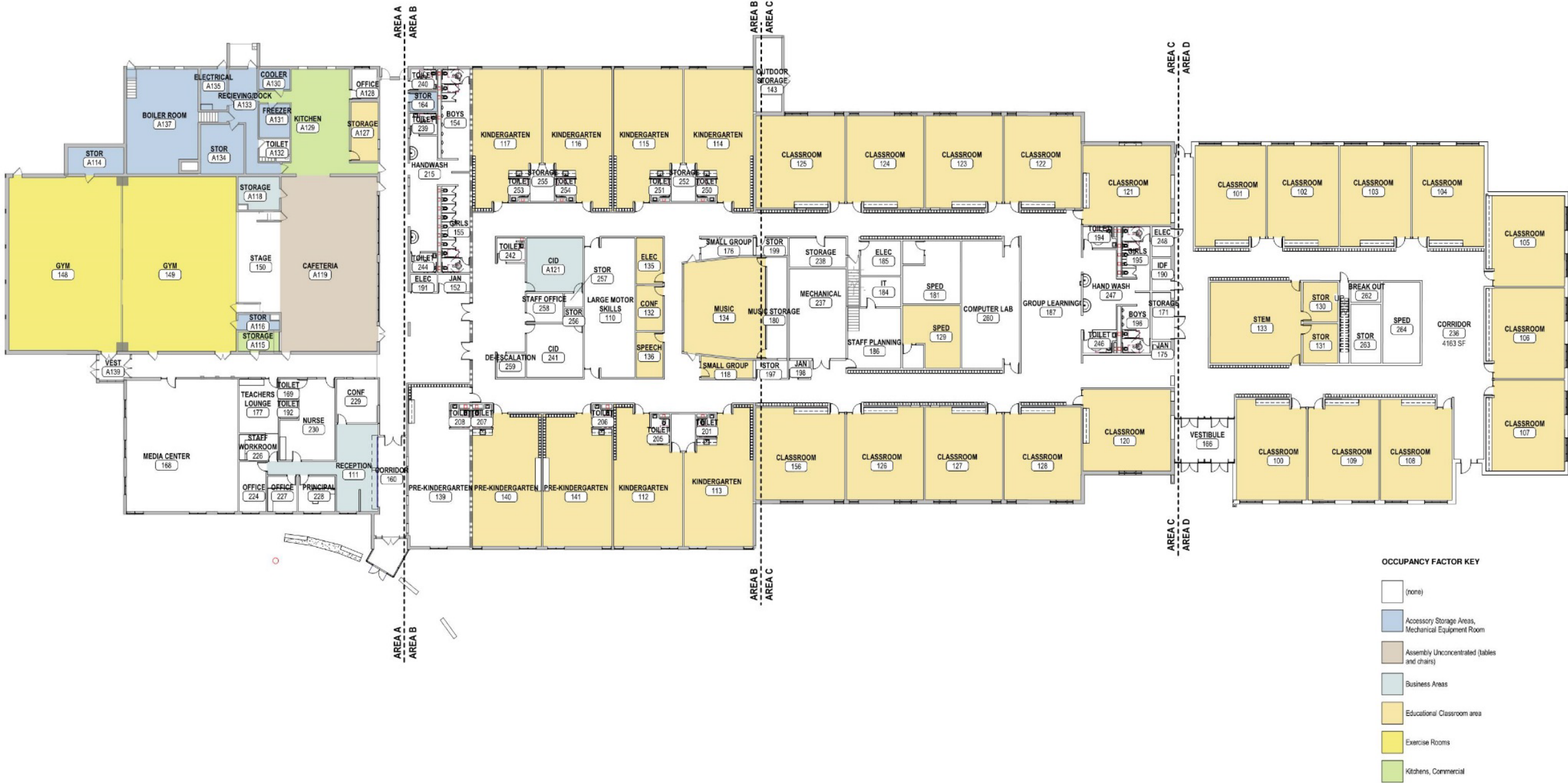


Proposed Site Plan

- 4. Memorial Trees**
- 5. Site Size and Configuration**
- 6. Street Image:**
 - i. Architecture
 - ii. Landscaping
 - iii. Signage



Proposed Castle Interior



Current Facilities Meetings

Richardson		Castle	
Staff	May 9	Staff	April 19
Parents	May 10	Board Walkthrough	April 24
City Council	May 15	Parents	May 1
Board Walkthrough	May 22	City Council	May 8
Neighborhood Meeting	July 26	Neighborhood Meeting	July 31



Castle Proposed Construction Timing



we exist to build a better tomorrow

Castle Elementary School	2018					2019											
	Aug	Sept	Oct	Nov	Dec	Jan	Feb	March	April	May	June	July	Aug	Sept	Oct	Nov	Dec
Temporary Site Provisions & Fencing																	
Sitework / Footing & Foundations																	
Addition Construction																	
Interior Remodel																	
Sitework																	
Completion																	



School District 622

NORTH ST. PAUL | MAPLEWOOD | OAKDALE

Ready for tomorrow

Comments/Discussion

www.isd622.org/facilitiesplan



/isd622



/isd622



@isd622



/isd622



School District 622

NORTH ST. PAUL | MAPLEWOOD | OAKDALE

Ready for tomorrow

Independent School District #622



Library

Administration

Main Entry

Classrooms

Castle Elementary School New Addition and Renovations

Independent School District #622

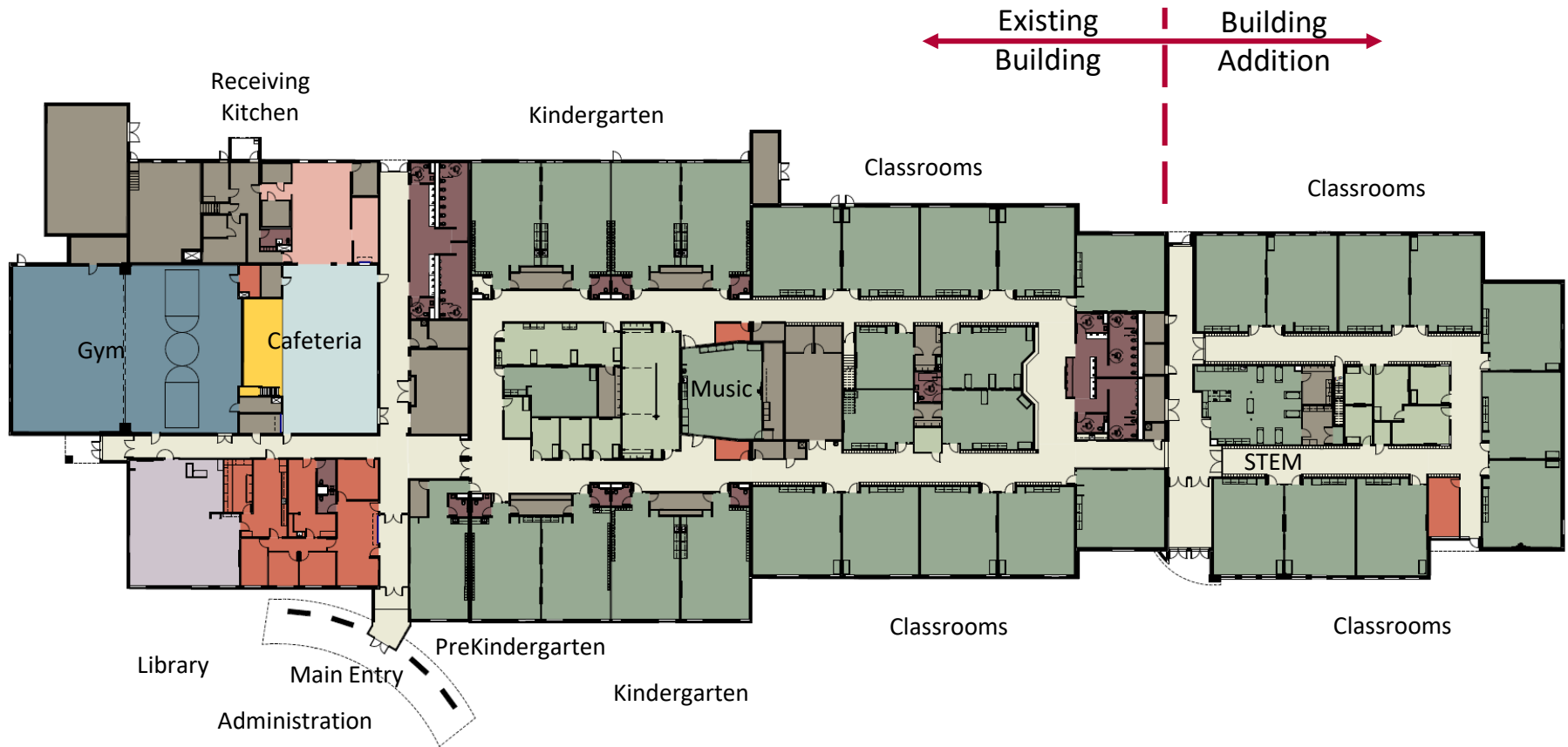


Proposed Sight Plan



Existing Sight Plan

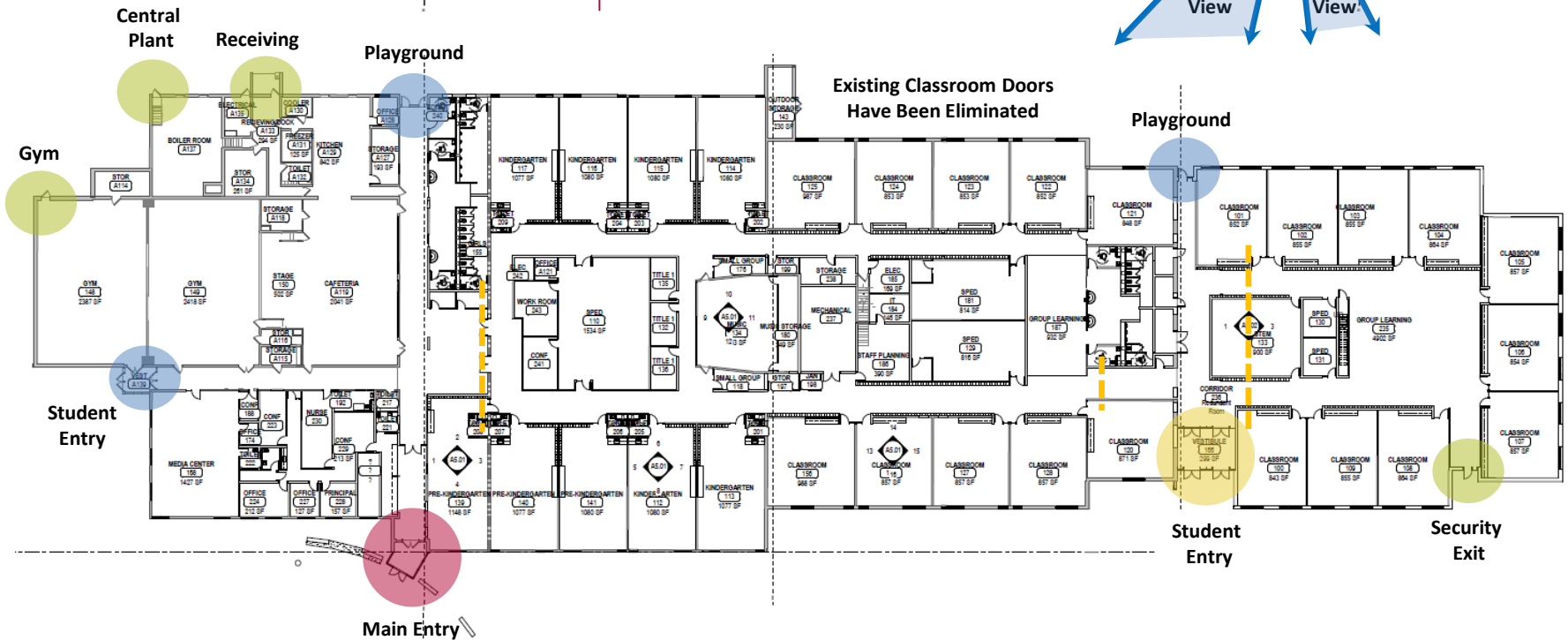
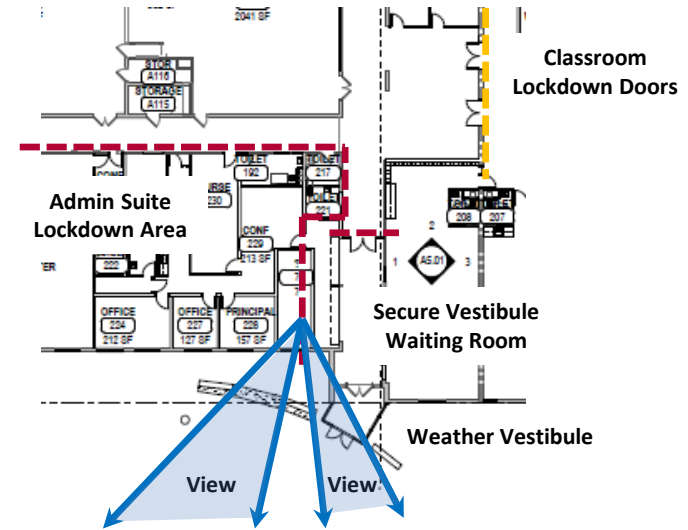
Independent School District #622



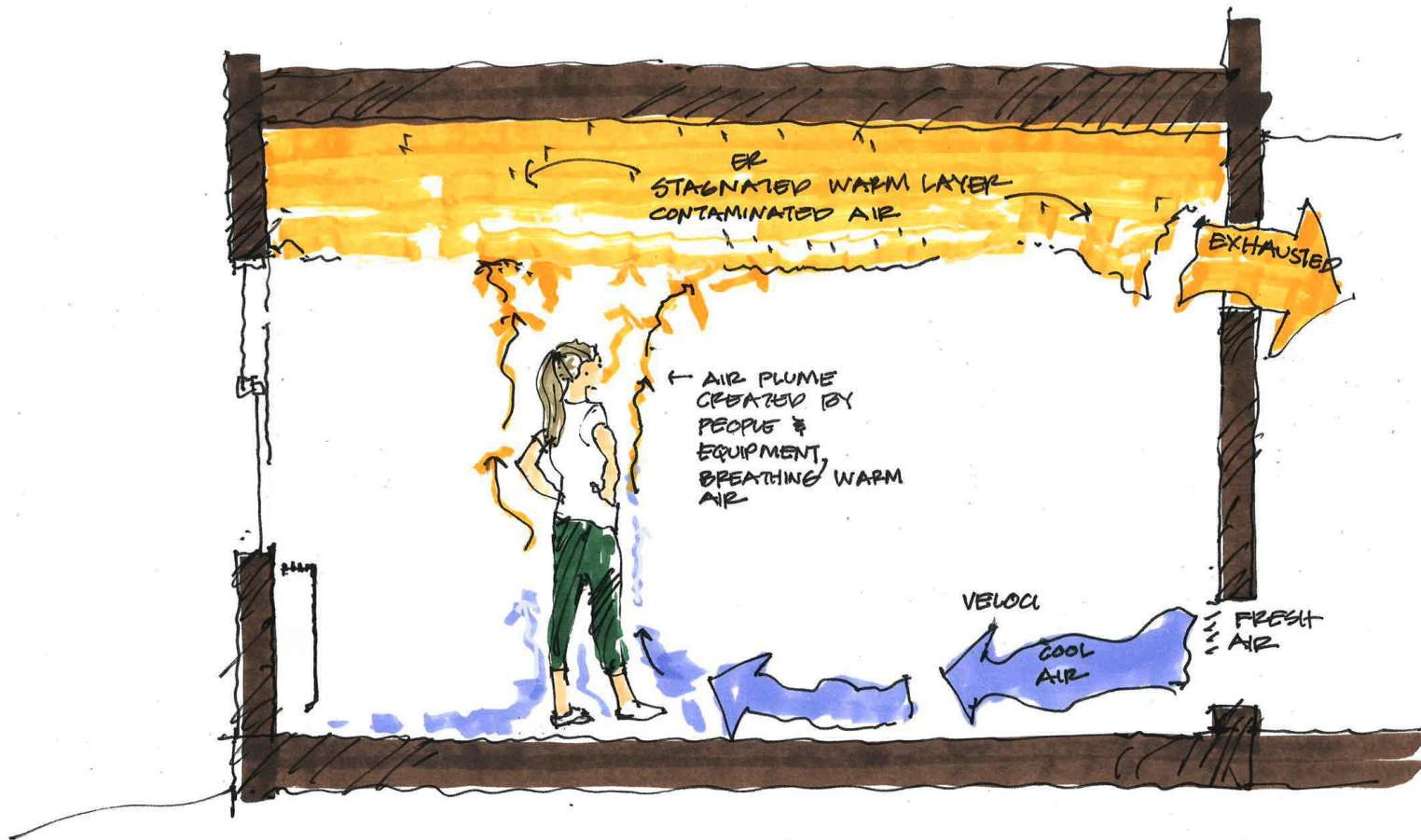
Independent School District #622

1. School Security differs by grade level

Order Of Containment/Access



Independent School District #622



Well Building Design Efforts

- Natural Light and Views to the Outside
- Acoustic Performance
- Thermal Comfort and Indoor Air Quality
- Lighting and Other Considerations

Independent School District #622



Castle Elementary School	2018					2019											
	Aug	Sept	Oct	Nov	Dec	Jan	Feb	March	April	May	June	July	Aug	Sept	Oct	Nov	Dec
Temporary Site Provisions & Fencing																	
Sitework / Footing & Foundations																	
Addition Construction																	
Interior Remodel																	
Sitework																	
Completion																	

Construction Considerations

- Neighborhood Considerations
- Project Phasing
- Student, Staff, and Community Safety
- Learning Opportunities for District Students



Open Discussion

Castle Elementary School
New Addition and Renovations