



**COOPERATIVE**  
**STRATEGIES**

COMPLETE FINANCIAL & DEMOGRAPHIC PLANNING FOR EDUCATION

**MOORPARK UNIFIED  
SCHOOL DISTRICT**

TRUSTEE AREA SCENARIOS

JANUARY 15, 2019



# TRUSTEE AREA PROCESS

Date	Activity
October 9, 2018	<b>Board Meeting: School District Initiates Process to Transition to By-District Elections</b>
November 13, 2018	<b>Board meeting: First Pre-Map Public Hearing and Presentation</b>
December 11, 2018	<b>Board meeting: Second Pre-Map Public Hearing</b>
December 12-22, 2018	Prepare Trustee Area Scenarios and Initiate Feedback on Waiver Request from Bargaining Units, DELAC, School Site Councils
January 15, 2019	<b>Board Meeting: First Public Hearing on Trustee Area Scenarios</b>
February 12, 2019	<b>Board Meeting: Second Public Hearing on Trustee Area Scenarios Public Hearing on General Waiver Request Board Consideration of General Waiver Request</b>
February 26, 2019	<b>Board meeting: Final Public Hearing on Trustee Area Scenarios Board Section of Trustee Area Map Board Consideration of Change in Election Method</b>
March / April 2019	County Committee on School District Organization Holds a Public Hearing and Considers Approval of Change in Election Method and Trustee Area Map
May 2019	State Board of Education Meeting; Waiver Application Consideration
June 2019	Cooperative Strategies sends Final Trustee area Map to the County Registrar of Voters
November 3, 2020	First Election Held Utilizing Trustee Areas



# CONSIDERATIONS IN TRUSTEE AREAS



Each area shall contain nearly equal number of inhabitants



Follow man-made and natural geographic features, as much as possible



Drawn to comply with the Federal Voting Rights Act



Respect incumbency, if possible



Compact and contiguous, as much as possible



Other local considerations (i.e., school boundaries, locations of school sites)

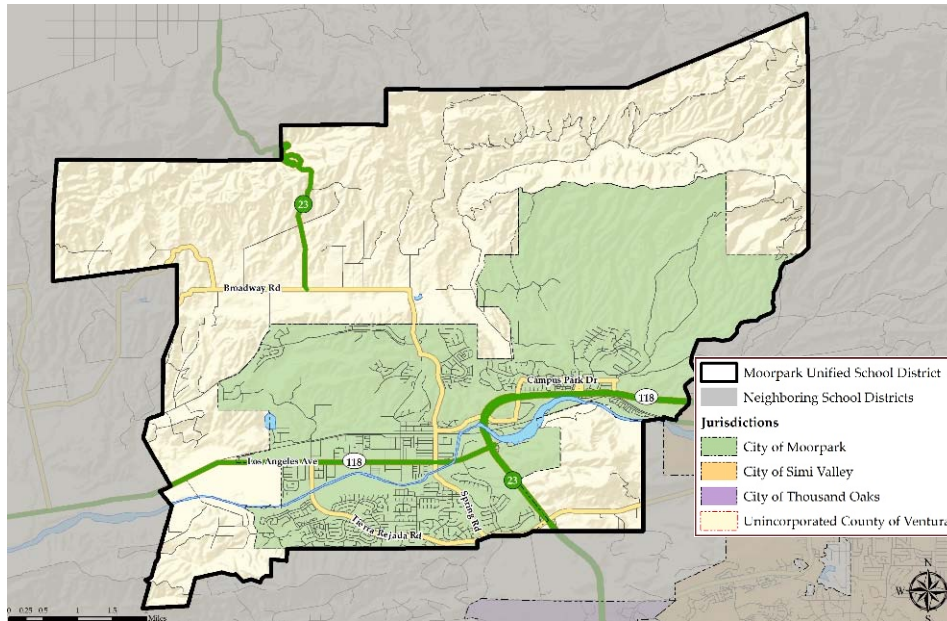


Respect communities of interest, as much as possible



# DISTRICT DEMOGRAPHICS

## 2010 CENSUS DATA



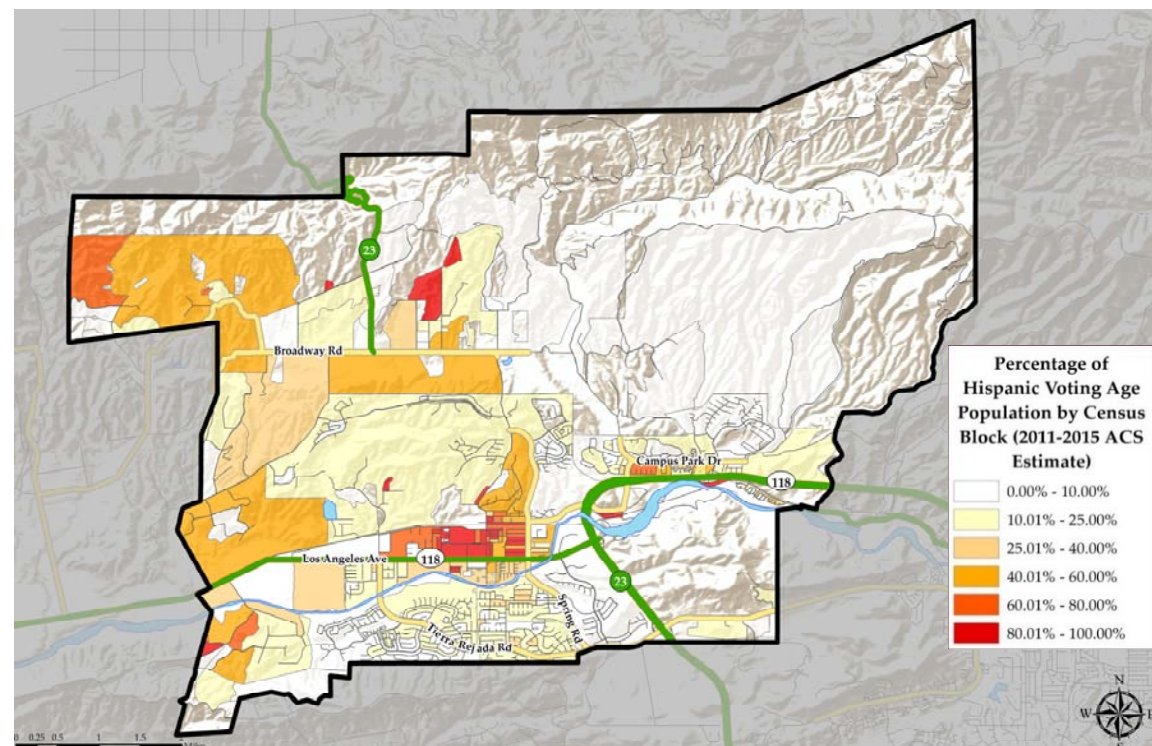
Population	Total Population		Age 18 and over	
	Total	%	Total	%
Hispanic/Latino	11,390	31.68%	7,541	28.87%
White	20,532	57.10%	15,371	60.22%
Black/ African American	497	1.38%	384	1.47%
American Indian/ Alaska Native	80	0.22%	60	0.23%
Asian	2,356	6.55%	1,845	7.06%
Native Hawaiian/ Pacific Islander	38	0.11%	33	0.13%
Other	71	0.20%	33	0.13%
Two or More Races	993	2.76%	497	1.90%
<b>Total Population</b>	<b>35,957</b>	<b>100.00%</b>	<b>26,124</b>	<b>100.00%</b>



# DISTRICT DEMOGRAPHICS

## CITIZEN VOTING AGE POPULATION ESTIMATES

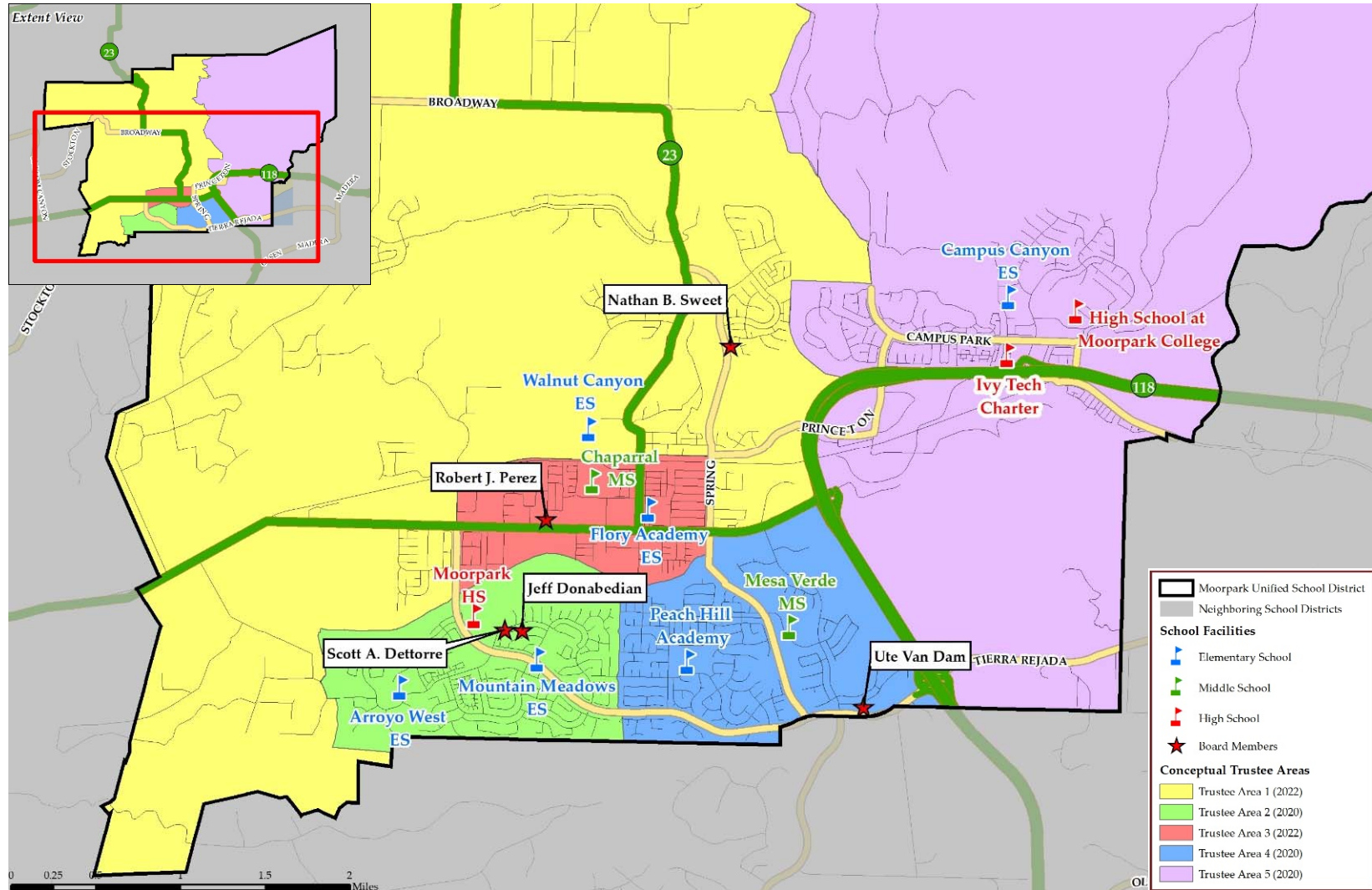
Population	2011-2015 CVAP	
	Total	%
Hispanic/Latino	5,193	21.56%
White	16,766	69.61%
Black/ African American	268	1.11%
American Indian/ Alaska Native	35	0.15%
Asian	1,710	7.10%
Native Hawaiian/ Pacific Islander	40	0.17%
Two or More Races	75	0.31%
<b>Total Population</b>	<b>24,087</b>	<b>100.00%</b>





# CONCEPTUAL TRUSTEE AREAS

## SCENARIO 1





# SCENARIO 1

## DEMOGRAPHICS

TRUSTEE AREA	Trustee Area 1		Trustee Area 2		Trustee Area 3		Trustee Area 4		Trustee Area 5	
TP* vs. CVAP**	TP	CVAP	TP	CVAP	TP	CVAP	TP	CVAP	TP	CVAP
Population	7,033	4,664	7,510	6,029	6,862	3,706	7,383	5,405	7,169	5,144
Population Variance	-158	-326	319	1,039	-329	-1,284	192	415	-22	154
	-2.20%	-6.53%	4.43%	20.83%	-4.58%	-25.73%	2.66%	8.33%	-0.31%	3.09%
Hispanic/Latino	2,628	936	837	561	4,550	2,009	1,116	809	2,259	1,194
	37.37%	20.07%	11.15%	9.31%	66.31%	54.21%	15.12%	14.97%	31.51%	23.21%
White	3,560	3,190	5,668	4,774	1,899	1,571	5,315	3,827	4,090	3,358
	50.62%	68.40%	75.47%	79.18%	27.67%	42.39%	71.99%	70.80%	57.05%	65.28%
Black/African American	95	49	109	25	86	23	99	186	108	35
	1.35%	1.05%	1.45%	0.41%	1.25%	0.62%	1.34%	3.44%	1.51%	0.68%
American Indian/ Alaska Native	20	0	11	20	6	15	25	20	18	15
	0.28%	0.00%	0.15%	0.33%	0.09%	0.40%	0.34%	0.37%	0.25%	0.29%
Asian	541	394	581	573	191	33	557	488	486	272
	7.69%	8.45%	7.74%	9.50%	2.78%	0.89%	7.54%	9.03%	6.78%	5.29%
Native Hawaiian/Other Pacific Islander	3	0	12	4	9	0	4	0	10	70
	0.04%	0.00%	0.16%	0.07%	0.13%	0.00%	0.05%	0.00%	0.14%	1.36%
Other	21	0	23	0	2	0	11	0	14	0
	0.30%	0.00%	0.31%	0.00%	0.03%	0.00%	0.15%	0.00%	0.20%	0.00%
Two or More Races	165	95	269	72	119	55	256	75	184	200
	2.35%	2.04%	3.58%	1.19%	1.73%	1.48%	3.47%	1.39%	2.57%	3.89%

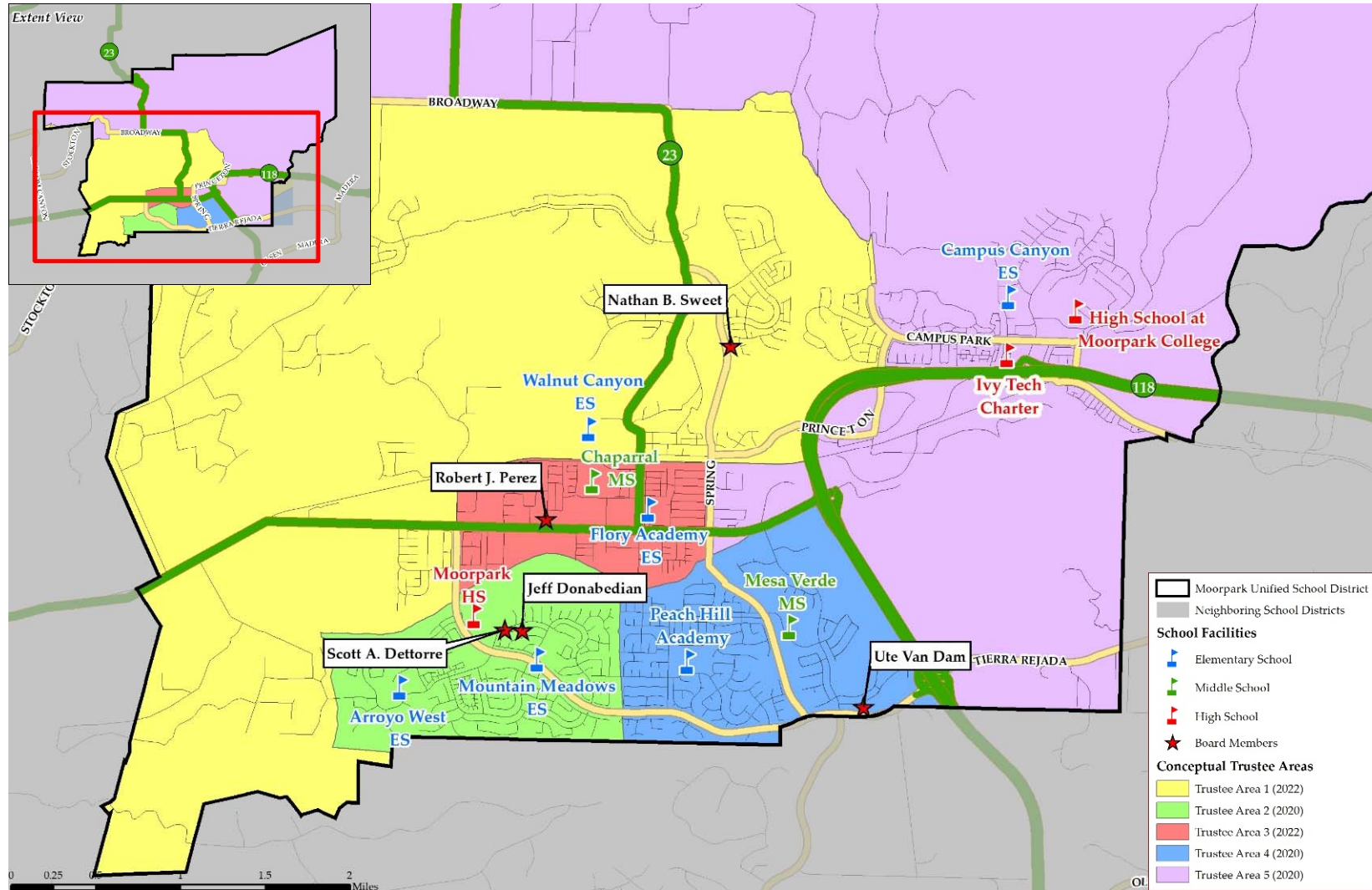
\*TP: Total Population

\*\*CVAP: Citizen Voting Age Population



# CONCEPTUAL TRUSTEE AREAS

## SCENARIO 2





# SCENARIO 2

## DEMOGRAPHICS

TRUSTEE AREA	Trustee Area 1		Trustee Area 2		Trustee Area 3		Trustee Area 4		Trustee Area 5	
TP* vs. CVAP**	TP	CVAP	TP	CVAP	TP	CVAP	TP	CVAP	TP	CVAP
Population	6,950	4,861	7,520	6,037	6,856	3,703	7,373	5,397	7,258	4,950
Population Variance	-241	-129	329	1,047	-335	-1,287	182	407	67	-40
	-3.36%	-2.58%	4.57%	20.99%	-4.66%	-25.79%	2.53%	8.16%	0.93%	-0.79%
Hispanic/Latino	2,358	881	840	562	4,544	2,006	1,113	808	2,535	1,252
	33.93%	18.12%	11.17%	9.31%	66.28%	54.17%	15.10%	14.97%	34.93%	25.29%
White	3,740	3,419	5,675	4,779	1,899	1,571	5,308	3,822	3,910	3,129
	53.81%	70.34%	75.47%	79.16%	27.70%	42.43%	71.99%	70.82%	53.87%	63.21%
Black/African American	98	70	109	25	86	23	99	186	105	14
	1.41%	1.44%	1.45%	0.41%	1.25%	0.62%	1.34%	3.45%	1.45%	0.28%
American Indian/ Alaska Native	14	0	11	20	6	15	25	20	24	15
	0.20%	0.00%	0.15%	0.33%	0.09%	0.41%	0.34%	0.37%	0.33%	0.30%
Asian	540	361	581	573	191	33	557	488	487	305
	7.77%	7.43%	7.73%	9.49%	2.79%	0.89%	7.55%	9.04%	6.71%	6.16%
Native Hawaiian/Other Pacific Islander	3	0	12	4	9	0	4	0	10	70
	0.04%	0.00%	0.16%	0.07%	0.13%	0.00%	0.05%	0.00%	0.14%	1.41%
Other	19	0	23	0	2	0	11	0	16	0
	0.27%	0.00%	0.31%	0.00%	0.03%	0.00%	0.15%	0.00%	0.22%	0.00%
Two or More Races	178	130	269	74	119	55	256	73	171	165
	2.56%	2.67%	3.58%	1.23%	1.74%	1.49%	3.47%	1.35%	2.36%	3.33%

\*TP: Total Population

\*\*CVAP: Citizen Voting Age Population



# QUESTIONS