



LAGUNA BEACH
UNIFIED SCHOOL DISTRICT

FACILITIES MASTER PLAN

Study Session & Workshop

Pool • LBHS Admin & Counseling • District Office

May 23, 2023



I. FACILITIES MASTER PLANNING CONTINUED

- Presentation of updated project proposals for LBHS and the District Office informed by community feedback.

II. QUESTIONS

- The public may submit questions for the Board of Education and staff.

Brief intermission to allow staff to review and sort questions received.

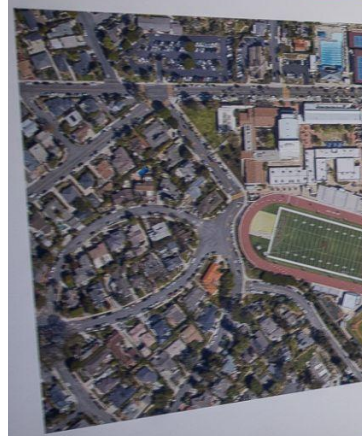
III. Q & A

- Board of Education and staff will answer questions; additional responses will be added to FAQ available online at www.lbusd.org.

V. FINANCING OPTIONS

- Options available to finance proposed projects, pending approval of scope of work.

LAGUNA BEACH HIGH SCHOOL, DISTRICT OFFICE, AQUATICS FACILITY
AERIAL VIEW



LAGUNA BEACH
UNIFIED SCHOOL DISTRICT

AQUATIC CENTER & TENNIS COURTS

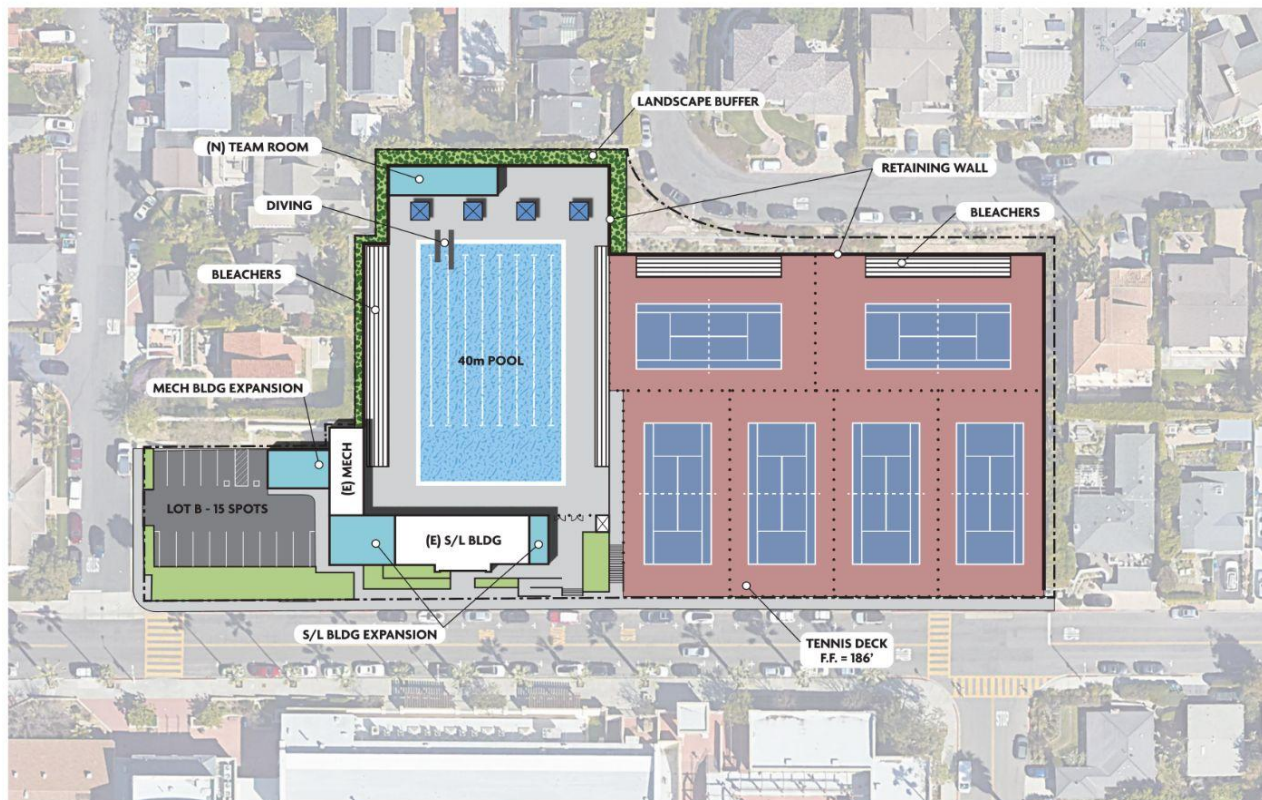
Program Needs and Existing Conditions

- Regulation-size, audience/parent engagement and attendance
- Major repairs
- Parking availability
- Community use

Community Feedback

- Minimize impact to athletic programs and joint use
- Maximize opportunities to reduce size and scope of proposed projects
 - Remove additional parking facilities
- Reduce displacement of facilities and maintain at existing locations

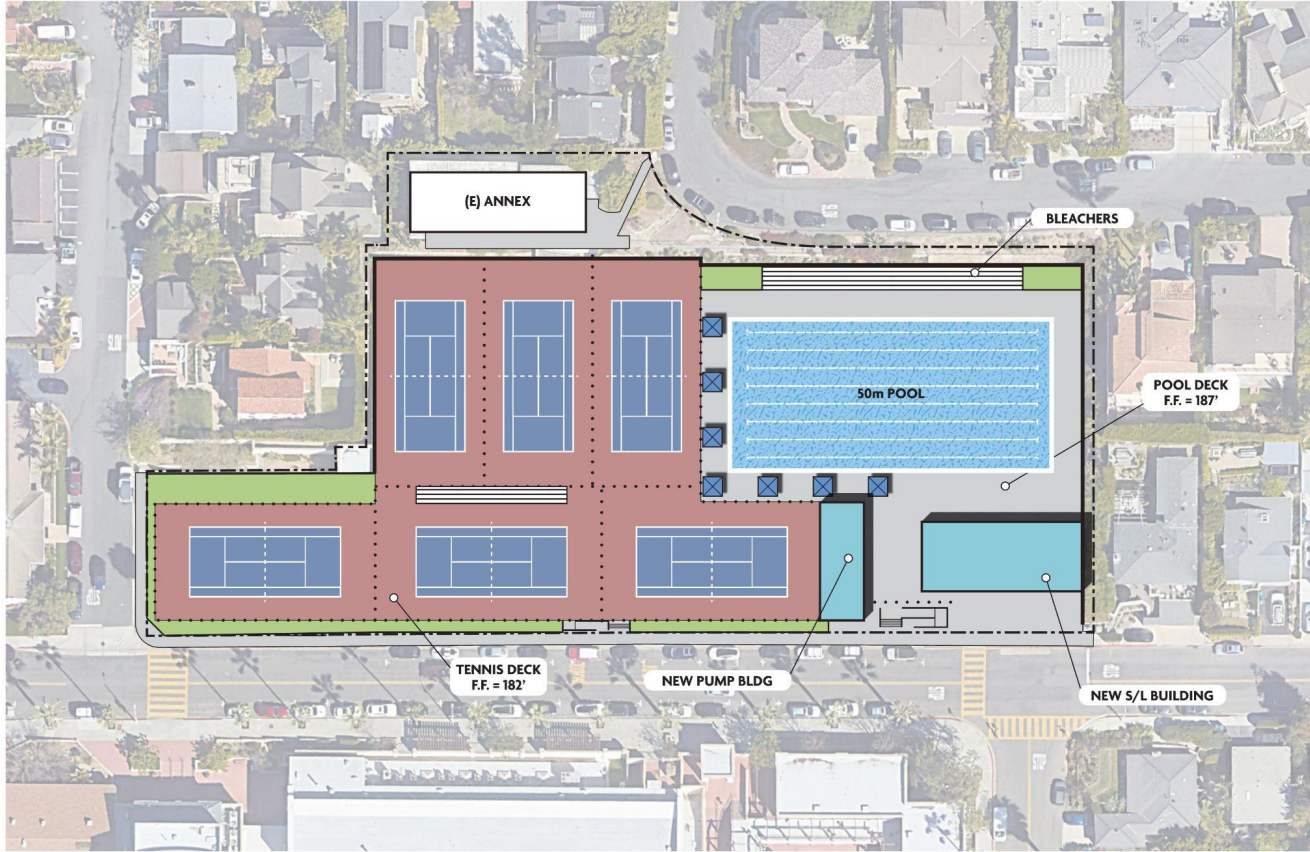




40M POOL



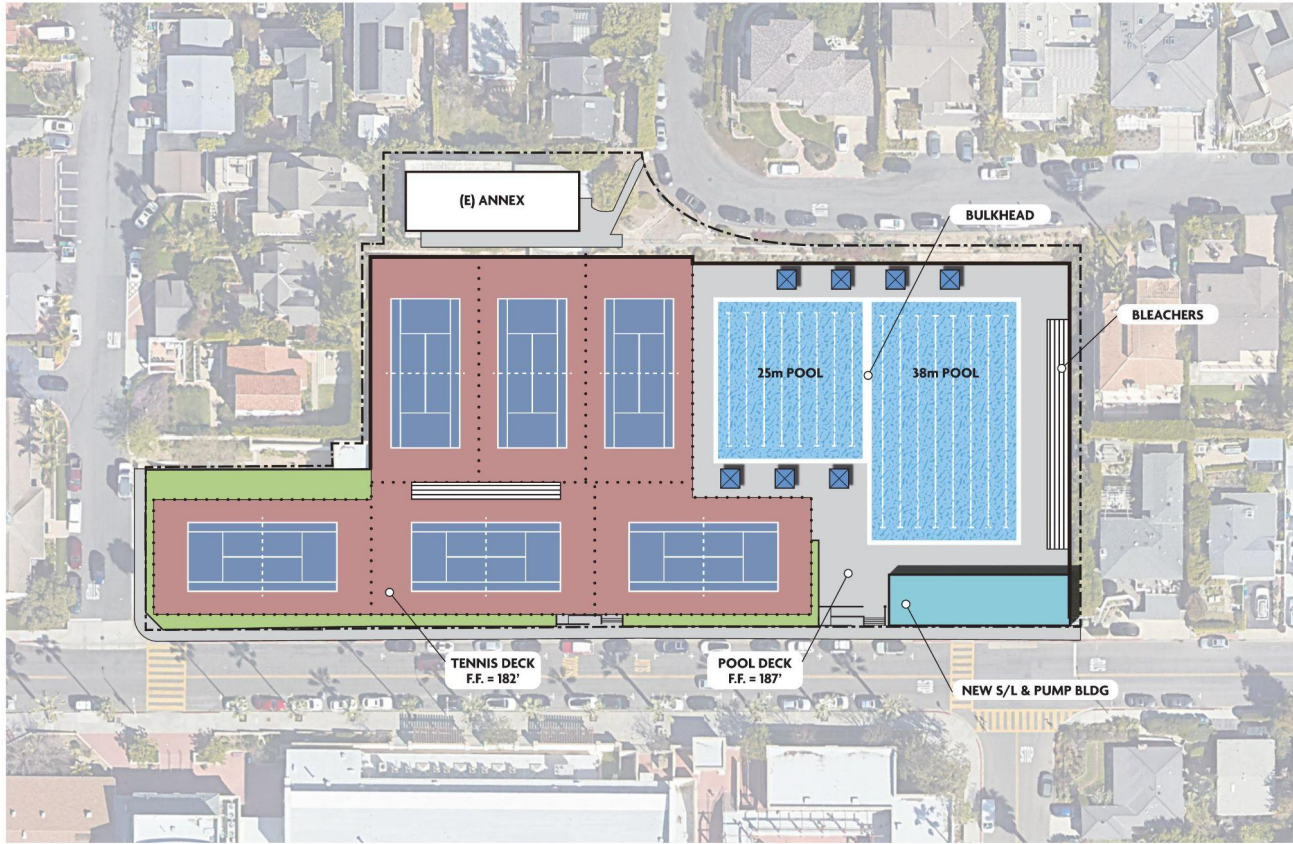
LAGUNA BEACH
UNIFIED SCHOOL DISTRICT



50M POOL

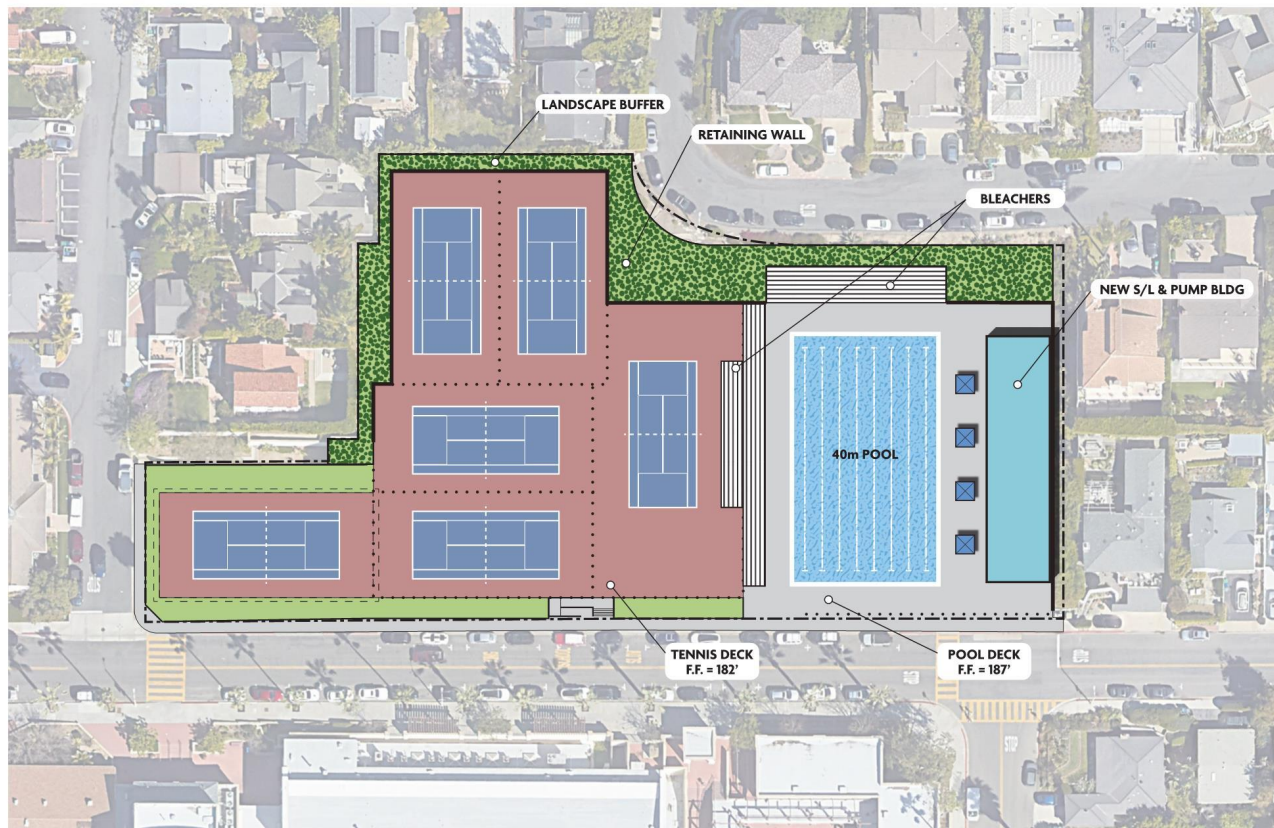


LAGUNA BEACH
UNIFIED SCHOOL DISTRICT



25M & 38M POOL





40M POOL



LAGUNA BEACH
UNIFIED SCHOOL DISTRICT

AQUATIC CENTER & TENNIS COURTS

Challenges

- Removes existing onsite parking facilities
- Removes existing district office facilities above the pool
 - School Power offices (3 full-time staff & part-time staff)
 - District annex offices (7 staff)
 - District training room
- Removes walkway between Manzanita & Park Ave.

Benefits

- Pool and tennis facilities located at current property
- Improve aquatic facilities to better meet current and future needs
- Ability to minimize displacement of aquatic programs



LAGUNA BEACH HIGH SCHOOL

ADMIN & STUDENT COUNSELING

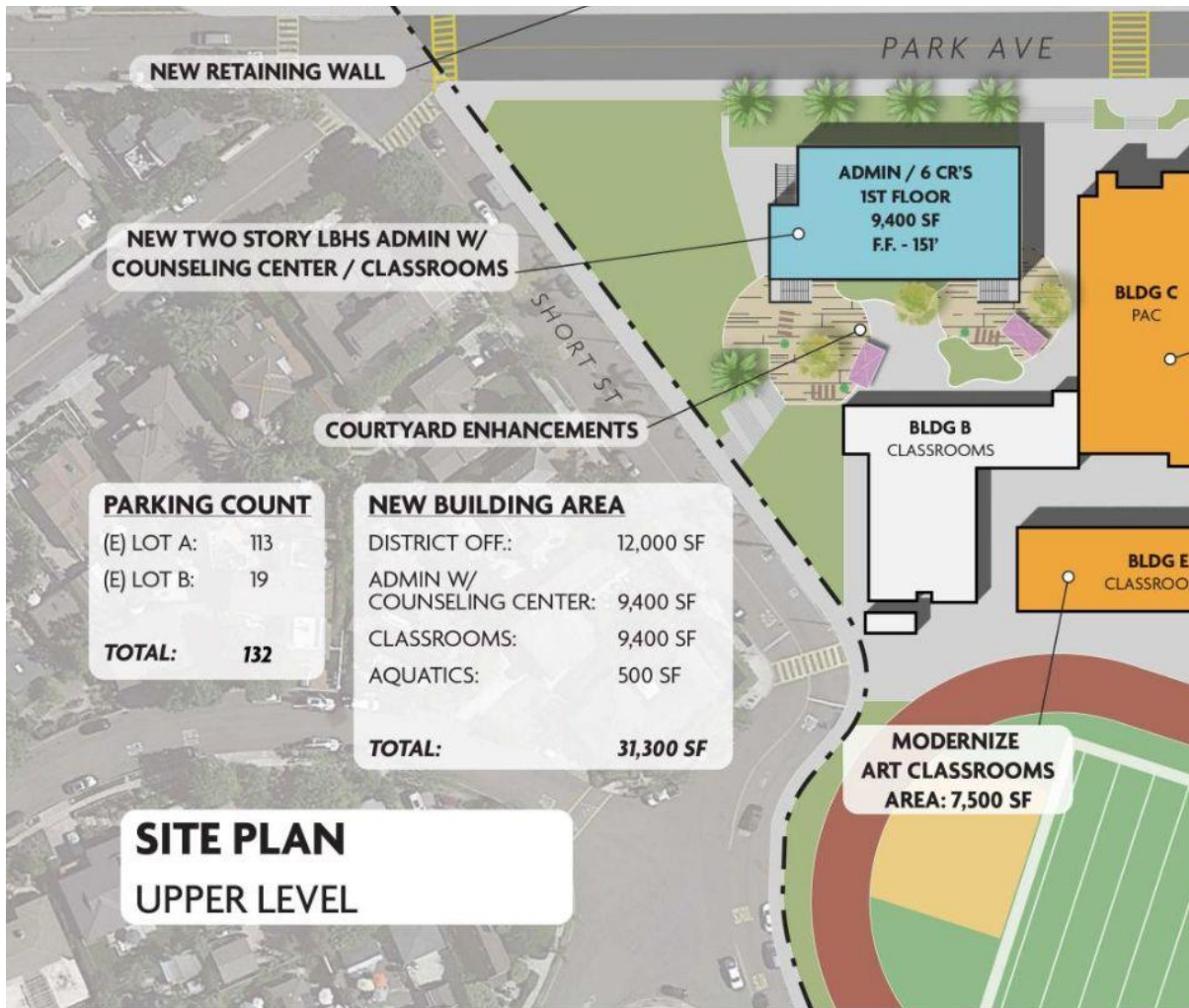
Program Needs and Existing Conditions

- Centralize student support services and create more welcoming environments for students, staff and families
- Increase meeting spaces available for collaboration
- Upgrade to current building codes and environmental standards
- Enhance outdoor learning environments
- Provide adequate office spaces to meet staff needs

Community Feedback

- Reduce size and scope of proposed projects
 - Maintain distinct administrative offices for district and school site
- Do not increase available parking



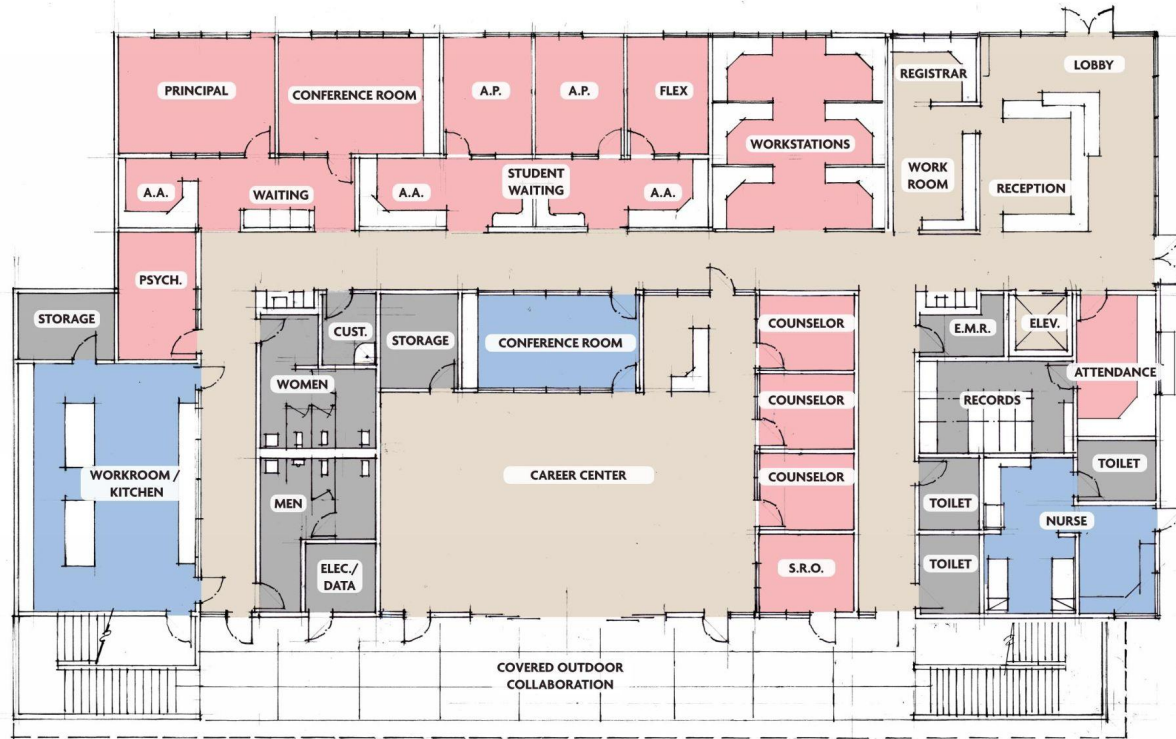


LAGUNA BEACH
UNIFIED SCHOOL DISTRICT

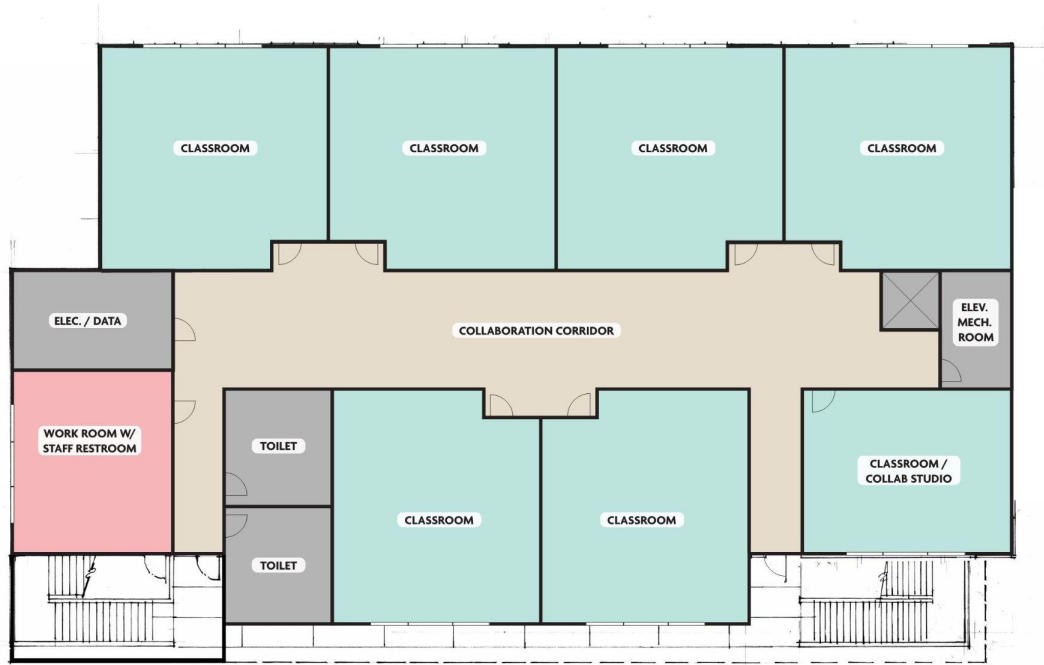
View from Park Ave. w/ LBHS Admin/Classroom Building on the Right



Conceptual Space Planning for LBHS Admin/Classroom Building First Floor



Conceptual Space Planning for LBHS Admin/Classroom Building Second Floor



LAGUNA BEACH HIGH SCHOOL

Challenges

- Parking is not addressed
- Does not capture potential cost savings of combining facilities into one building location

Benefits

- Sufficient space to meet student focused service needs
- Sustainable building opportunities to provide state-of-art educational spaces for students
- Reduction in proposed square footage allows facilities to remain in current location, shape, size and integrate into community architecture theme



DISTRICT OFFICE

Program Needs and Existing Conditions

- ADA updates and repairs
- Provide adequate office spaces to meet staff needs
- Meeting spaces conducive for public engagement, i.e., community advisories, task forces, Board of Education meetings
- Increase meeting spaces available for collaboration & training
- Flexible and functional shared work spaces

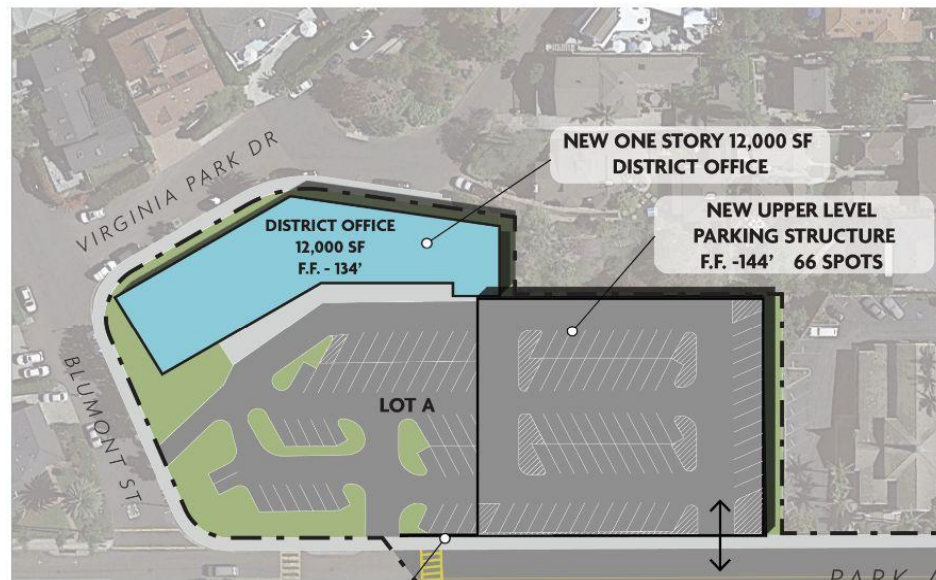
Community Feedback

- Reduce size and scope of proposed projects
 - Maintain distinct administrative offices for district and school site
 - Do not increase available parking
- Considerations for traffic, light and noise
- Maintain existing rooflines





EXISTING PARKING



INCLUDES NEW PARKING STRUCTURE





EXISTING PARKING



INCLUDES NEW PARKING STRUCTURE



DISTRICT OFFICE

Challenges

- 1-story increases building footprint and limits landscape buffer space
- 2-story building circulation requires stairs and elevator

Benefits

- Potential reuse of district office building A could save costs
- Both options do not exceed current roof heights, taking advantage of existing topography
- Reduction in proposed square footage allows facilities to remain in current location, shape, size and integrate into community architecture themes



THANK YOU

Questions can be submitted using the white question cards.



LAGUNA BEACH
UNIFIED SCHOOL DISTRICT

