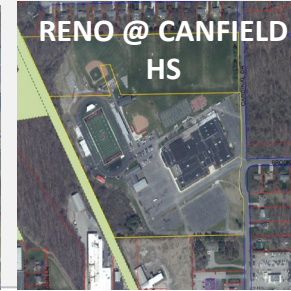
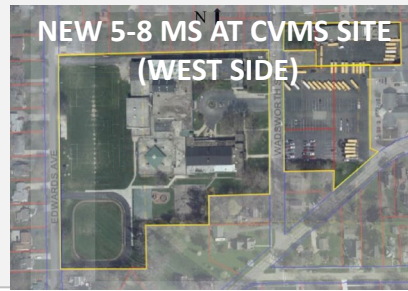


Shortlisted Master Plan Option #1

Scope of Work

- New PK-4 School at Hilltop ES site (\$40.7M)
- New 5-8 Middle School at CVMS site (\$46M)
 - Build 2nd gym with new MS (\$3.6M 2nd gym)
- Select Renovations to Canfield High School (\$15M)
- Hilltop ES to repurposed for BOE Admin.
- Abate/Demolish
 - Canfield Village Middle School (\$1.7M)
 - CH Campbell Elementary School (\$524K)

Sites



PROS:

- Plan can be segmented to focus on new middle school (identified as top priority)
- Consolidates elementary schools
- Preserves neighborhood schools and current grade configurations
- Keeps CVMS in center of town
- 3 buildings

CONS:

- 3 buildings to maintain
- Overall high cost
- Challenges with bus routes
- Building time frame
- Maintenance for 3 buildings
- 3 story academic portion of the MS building
- Disruption during construction

Preliminary Project Cost: \$107,517,125

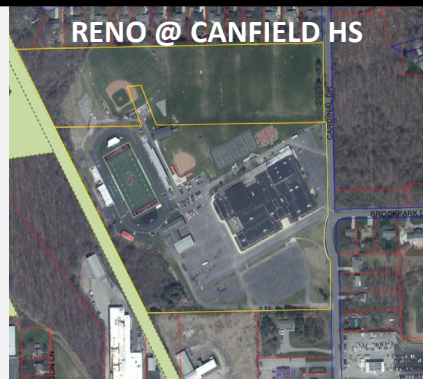
Note: Costs are estimated and still to be finalized

Shortlisted Master Plan Option #2

Scope of Work

- New PK-8 School at Shields Rd (\$78.6M School + \$7.2M in roadwork & soil improvements)
- Build 2nd Middle School Gymnasium (\$3.6M)
- Select Renovations to Canfield High School (\$15M)
- Abate/Demolish
 - Canfield Village Middle School (\$1.7M)
 - CH Campbell Elementary School (\$524K)
 - Hilltop Elementary School (\$606K)

Sites



PROS:

- PK-8 grades all together
- Fewer design constraints due to site
- Only 2 schools to maintain
- No interruptions during construction
- Better cost
- Consolidation of resources
- No swing space needed
- District owned land
- Large, buildable space with room for expansion
- Future site for CHS

CONS:

- Site location (township)
- Soil and traffic concerns, cost and timing of improvements needed
- Loss of income tax revenue
- Water and sewage needed at site'
- Only 2 buildings

Preliminary Project Cost: \$107,294,934

Note: Costs are estimated and still to be finalized

Shortlisted Master Plan Option #7

Scope of Work

- New PK-6 School at Hilltop Site (\$59M)
- Select Reno/Convert/Add to Canfield HS for 7-12 School (\$29.3M)
- Abate/Demolish
 - Canfield Village Middle School (\$1.7M)
 - CH Campbell Elementary School (\$524K)
 - Hilltop Elementary School (\$606K)

PROS:

- Lowest cost option
- Only 2 schools to maintain
- High school would be used at full capacity
- Only 1 new building

CONS:

- Plan not able to be segmented
- Staffing/Licensures limitations
- Placement of addition at High School
- 2 schools
- Existing gas line on property and cramped area at Hilltop

Sites



Preliminary Project Cost: \$91,158,455

Note: Costs are estimated and still to be finalized