

# **Level D**

Reading

## **SAMPLE TEST ITEMS**

## DIRECTIONS

1. Mark your answers on the answer sheet. Please do **not** write in the test booklet. Use a number 2 pencil only.
  2. Try to answer the question. Choose the **one** best answer. If you want to change an answer, be sure to erase the first mark completely. If you don't know an answer, you can go to the next question. Follow the numbers carefully.
- 

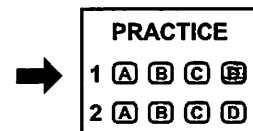
## Practice

The Westview Health Care Center is planning to offer a four-week program to educate teens aged 13 to 18 on healthy weight-loss strategies and good nutrition. The focus will be on self-image, fitness, and food. Participants will identify healthy meals, develop exercise plans, and examine lifestyle choices.

---

What is the purpose of the new program?

- A. to provide nutritious meals for children
- B. to interest teenagers in health care careers
- C. to learn about the health problems of teenagers
- D. to teach young people how to control their weight and eat healthy food



**Riverview Gas and Electric Company**

***You May Qualify for Energy Assistance***

RG&E has a variety of energy assistance plans and services to accommodate customers on a fixed or limited income, or who have certain special living situations. These include:

- 20% discount on monthly energy bills for seniors whose income meets established guidelines
- Lower rates for customers with a medical condition that requires greater energy use
- Advance notice of rolling blackouts for customers vulnerable to the health risk of extreme heat who require a constant temperature in their living space
- Flexible temporary payment plans for customers undergoing sudden and/or emergency economic hardship (please contact us immediately)
- Free energy-saving home improvements for homeowners on fixed and/or limited incomes

Visit [www.riverviewge.com](http://www.riverviewge.com) or call **1-800-RGE-HELP (1-800-743-4357)**.

- 
1. Which of the following does RG&E offer?
- A. advance notice of rate increases for customers on a fixed income
  - B. special equipment for customers requiring a constant room temperature
  - C. lower rates for low-income homeowners who conserve energy
  - D. discounted rates for customers who use more energy for health reasons

## What Are Today's Employers Looking For?

What are today's employers looking for in a new employee? Why does candidate A get the job when candidate B seems better qualified? The answer may lie in the fact that, in addition to traditional job qualifications, personal qualities are now often being given substantial weight in the hiring process. Technical skills, education, and work experience in themselves may not be enough to land a particular job. Employers are looking for more, and have improved their hiring process to gain the information they need to make what they feel is the right choice in a new hire.

Skilled job interviewers ask questions that provide insight into an applicant's ability to problem-solve and to perform under stress. They try to gain a sense of the person's flexibility, motivation and self-direction, and how well they would fit in and work with others. They assess oral communication skills and writing skills. Finally, interviewers factor in whether or not the attributes and skills of the prospective employee are transferable in the event of a promotion or relocation.

Don't underestimate a job interview. Even though you may have exactly the résumé an employer is looking for, it's only one part of the process.

- 
2. Which of the following statements is supported by the above information?
- A. Employers are often unrealistic in what they expect of job applicants.
  - B. An interview is still an important part of the hiring process.
  - C. Many of today's employers have relaxed their hiring standards.
  - D. Interviewers tend to focus too much on personality in the questions they ask.

**AUTHORIZATION, AGREEMENT AND CERTIFICATION OF TRAINING**

**Employee's Agreement**

1. I AGREE that, upon completion of the Government-sponsored training described in this authorization, if I receive salary covering the training period, I will serve in the agency three (3) times the length of the training period. If I received no salary during the training period, I agree to serve the agency for a period equal to the length of training, but in no case less than one month. (The length of part-time training is the number of hours spent in class or with the instructor. The length of full-time training is eight hours for each day of training, up to a maximum of 40 hours a week).

- 
3. What obligation does an employee agree to in point 1?
    - A. to complete at least one month of unpaid training
    - B. to serve in the agency at least three times during the training period
    - C. to continue working for a specified period of time after training
    - D. to attend training classes part-time or full-time as assigned

### Coffee – To Drink or Not to Drink?

Most of us know little about caffeine other than that it is in coffee, tea, cola and chocolate and that it is stimulating. Is it healthy? Is it unhealthy? Some people drink bottomless cups of coffee, while others avoid caffeine because they fear potential health risks. The most common and accurate perception is that caffeine is not exactly good for you, but it isn't really bad for you either.

Caffeine is a stimulant, however, and a mild form of addiction can occur with heavy consumption. There is no question that the coffee habit produces withdrawal symptoms when people suddenly quit. They experience drowsiness, headaches, and restlessness for a short time after abruptly stopping. Even with moderate

consumption, its stimulant effects cause most people, especially as they age, to limit their intake of caffeine and not drink it too late in the day so it does not interfere with their sleep. The most negative aspect of caffeine seems to be that it can create nervousness or stomach discomfort in some individuals. Researchers state that there is no link between coffee and high blood pressure, although people with those conditions should check with their physician about whether or not to drink coffee. For most people, though, moderate consumption has no ill effects, and that cup of coffee first thing in the morning or as a late afternoon "pick-me-up" is just fine.

---

4. What claim is supported by the above information?

- A. Caffeine addiction poses considerable health risks.
- B. The benefits of caffeine outweigh perceived risks to health.
- C. There is no reason for most people to fear caffeine.
- D. Not enough research has been done on the positive effects of caffeine.

5. What is the tone of the article?

- A. objective and balanced
- B. uncertain and tentative
- C. generally biased towards caffeine
- D. generally biased against caffeine

## CASAS Reading - Sample Test Items

### Answer Keys

#### Level A

1. B
2. A
3. C
4. D
5. D

#### Level B

1. D
2. B
3. D
4. C
5. A

#### Level C

1. B
2. A
3. C
4. B
5. D

#### Level D

1. D
2. B
3. C
4. C
5. A