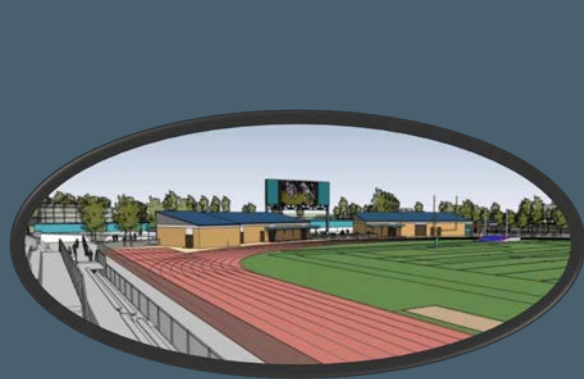




Hacienda La Puente Unified School District

Measure BB - Bond Projects Monthly Report



Regular Board Meeting
October 26, 2017

Business Services Division

Latest News

- ❑ Schools' Principals receive tasks and updates regarding Measure BB.

Planning

- ❑ Business Services Division has received Phase 1 and Phase 2 School Principals' comments on schools' configurations.
- ❑ The following pages are examples of communications received from the Principals.

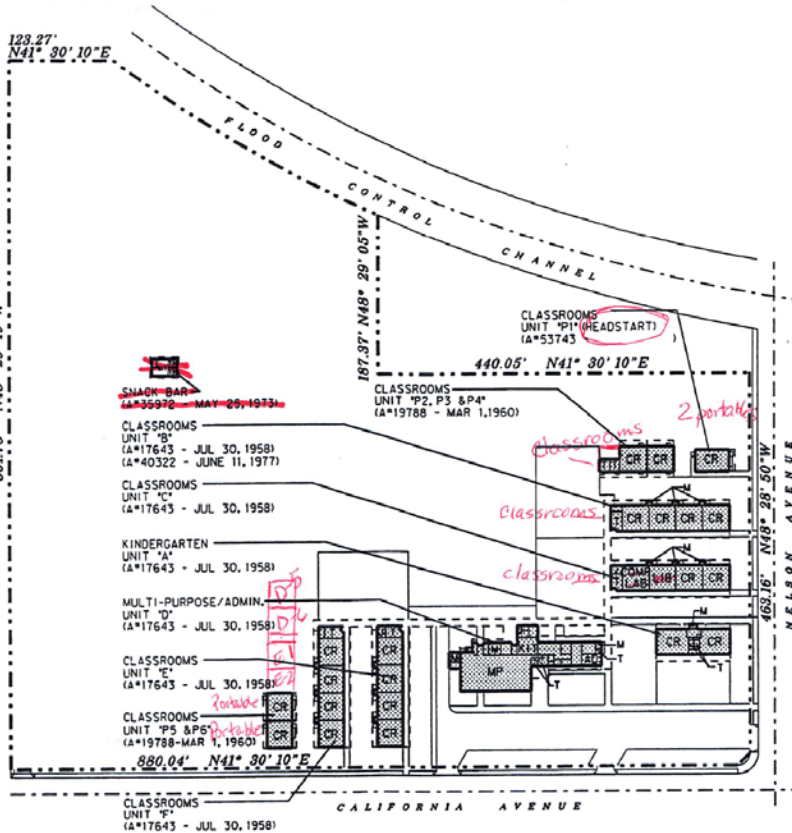
Phase 1



NELSON ELEMENTARY SCHOOL

330 N. CALIFORNIA AVENUE, LA PUENTE, CALIFORNIA 91744
 HACIENDA LA PUENTE UNIFIED SCHOOL DISTRICT
 15959 E. GALE AVE. LA PUENTE, CA 91749
 COUNTY OF LOS ANGELES

DIAGRAM BUILDING AREAS
☐ EXISTING (11-41)
☐ BASIC PLANS (12-41)
☐ FINAL PLANS (13-41)



SITE LEGEND:
 BUILDING > 30 YRS. OLD
 PORTABLES > 20 YRS. OLD

SITE INFORMATION:
 LAND AREA 12.37 ACRES
 STUDENTS 541 STUDENTS



SITE PLAN



NEWTON MIDDLE SCHOOL

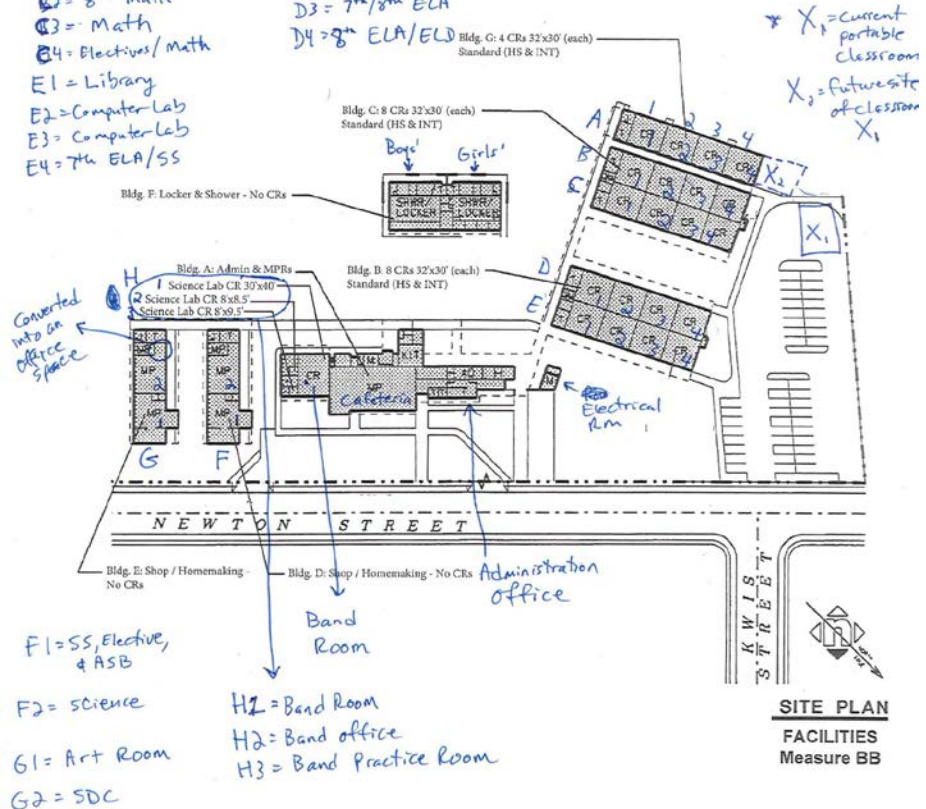
15616 NEWTON STREET, HACIENDA HEIGHTS, CALIFORNIA 91745
 HACIENDA LA PUENTE UNIFIED SCHOOL DISTRICT
 15959 E. GALE AVE. LA PUENTE, CA 91749
 COUNTY OF LOS ANGELES

DIAGRAM BUILDING AREAS
☐ EXISTING (11-41)
☐ BASIC PLANS (12-41)
☐ FINAL PLANS (13-41)

A1 = 6th Grade SS
 A2 = 6th Grade ELA
 A3 = 6th Grade ELA/SS
 A4 = 6th Math/7th Sci
 B1 = 6th Sci/Math
 B2 = 8th Math
 B3 = Math
 B4 = Electives/Math
 E1 = Library
 E2 = Computer Lab
 E3 = Computer Lab
 E4 = 7th ELA/SS

B1 = RSP
 B2 = 6th Math/Sci
 B3 = Chinese
 B4 = Computer Lab
 D1 = 8th Sci
 D2 = 7th SS
 D3 = 7th/8th ELA
 D4 = 8th ELA/ELD

Index = SS = Social Science
 ELA = English
 Sci = Science
 RSP = Special Educ
 SDC = Special Educ
 ELD = English Language development



SITE PLAN
 FACILITIES
 Measure BB

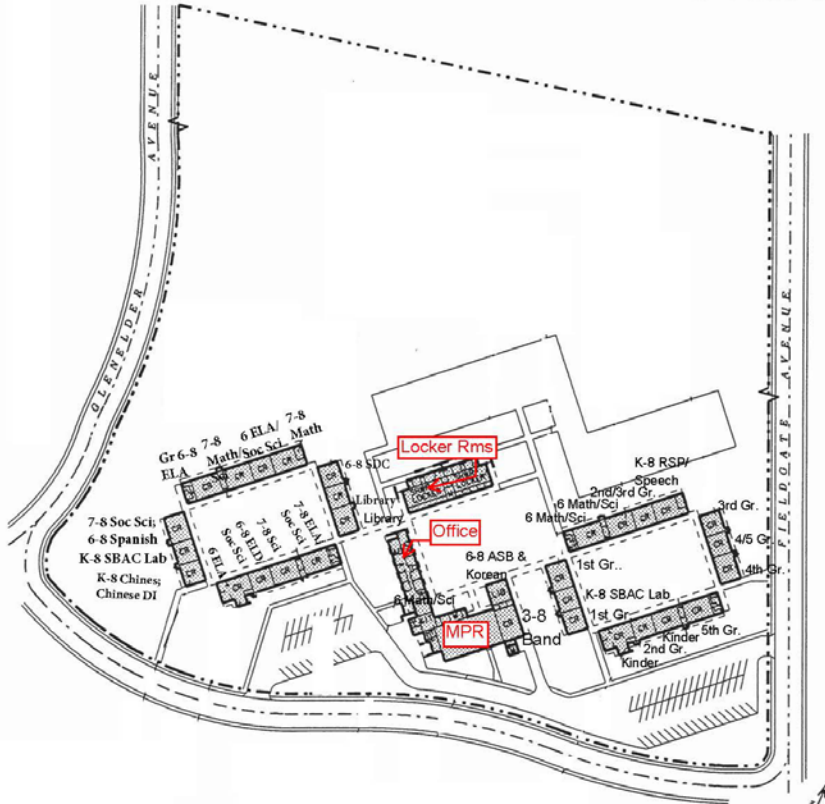
Phase 1



CEDARLANE MIDDLE SCHOOL

16333 CEDARLANE DRIVE, HACIENDA HEIGHTS, CALIFORNIA 91745
HACIENDA LA PUENTE UNIFIED SCHOOL DISTRICT
18959 E. GALE AVE. LA PUENTE, CA 91749
COUNTY OF LOS ANGELES

DIAGRAM BUILDING AREAS
☒ EXISTING (11-A)
☐ BASIC PLANS (12-A)
☐ FINAL PLANS (13-A)



9/14/17 Ellen Park, Principal

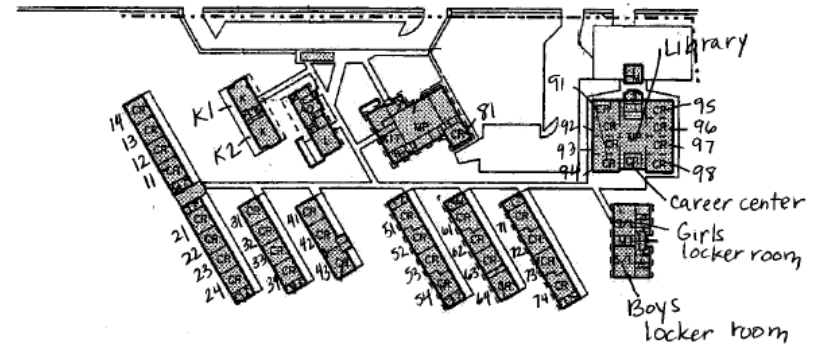
SITE PLAN
FACILITIES
 Measure BB



GRANDVIEW K-8 SCHOOL

795 N. GRANDVIEW LANE, VALINDA, CALIFORNIA 91744
HACIENDA LA PUENTE UNIFIED SCHOOL DISTRICT
18959 E. GALE AVE. LA PUENTE, CA 91749
COUNTY OF LOS ANGELES

DIAGRAM BUILDING AREAS
☒ EXISTING (11-A)
☐ BASIC PLANS (12-A)
☐ FINAL PLANS (13-A)



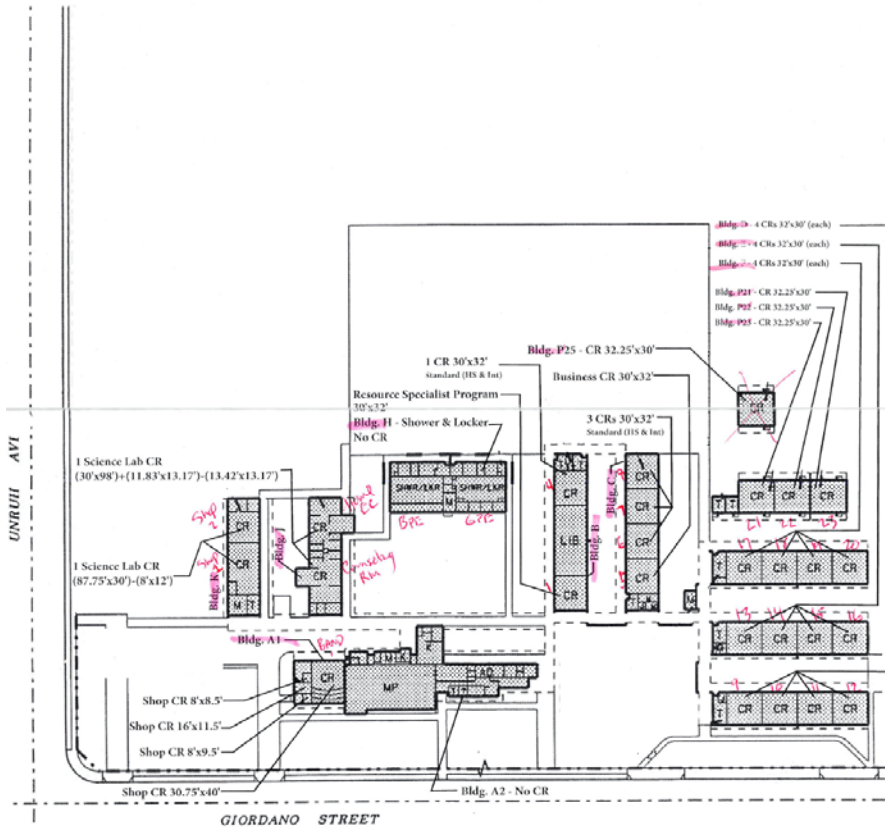
SITE PLAN
FACILITIES
 Measure BB



SPARKS MIDDLE SCHOOL

15100 GIORDANO STREET, LA PUENTE, CALIFORNIA 91744
HACIENDA LA PUENTE UNIFIED SCHOOL DISTRICT
15959 E. GALE AVE. LA PUENTE, CA 91749
COUNTY OF LOS ANGELES

DIAGRAM BUILDING AREA	
<input checked="" type="checkbox"/> EXISTING	(1) -
<input type="checkbox"/> BASIC PLANS	(2) -
<input type="checkbox"/> FINAL PLANS	(3) -



SITE PLAN
FACILITIES
Measure BB

Los Altos Elementary
Phase 2 Bond report

Basic Information

- School site currently has no empty rooms or offices.
- Following service providers work in cafeteria, library after 11 a.m., and other areas on campus including benches and two converted closets: RSP, Psychologist, SST COSA, Counselor, APE, OT, and Speech Services
- Rooms G1 and G2 slated to be replaced by new building (G1 and G2) due to age and structural needs.
- School will need an additional 2 portables for the 2018 school year due to projected growth of DI into fifth grade and additional third grade classroom.

Classroom Used as other facilities

- B2 is library
- F1 is SBAC lab 1
- G4 is SBAC lab 2

Administration Office

- Main office
- Nurses
- Meeting Room
- Principals Office

Cafeteria

- Kitchen
- Cafeteria
- Stage (used as ART and ASES headquarters)
- COSA/Counselor room - former storage closet for cafeteria manager

C wing

- C1 Kinder
- C2 Kinder

B Wing

- B1 First
- B2 Library
- B3 Kinder
- B4 First

A Wing

- A1 First

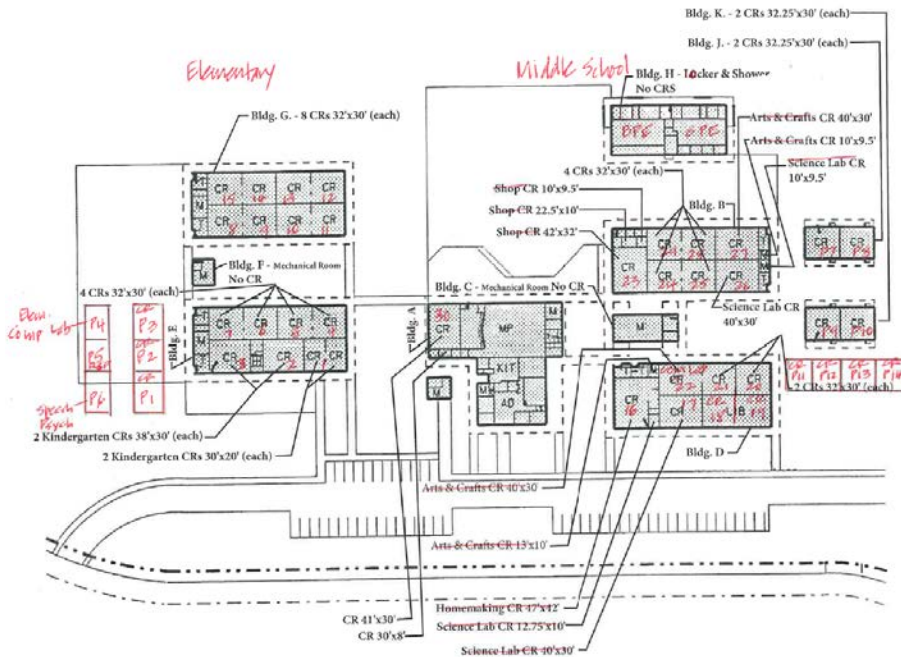
Phase 2



MESA ROBLES ELEMENTARY SCHOOL

16060 MESA ROBLES DRIVE, HACIENDA HEIGHTS, CALIFORNIA 91745
HACIENDA LA PUENTE UNIFIED SCHOOL DISTRICT
15959 E. GALE AVE. LA PUENTE, CA 91719
COUNTY OF LOS ANGELES

DIAGRAM BUILDING AREAS
☒ EXISTING (1-2)
☐ BASIC PLANS (12-2)
☐ FINAL PLANS (13-2)



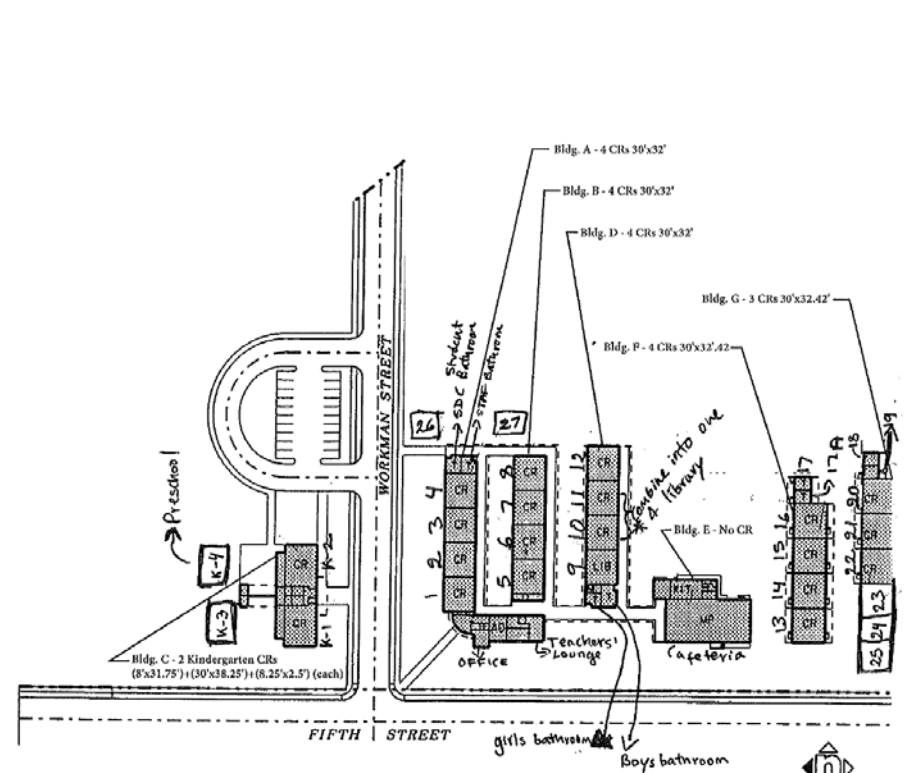
SITE PLAN
FACILITIES
Measure BB



WORKMAN ELEMENTARY SCHOOL

16000 WOPKMAN STREET, LA PUENTE, CALIFORNIA 91744
HACIENDA LA PUENTE UNIFIED SCHOOL DISTRICT
15959 E. GALE AVE. LA PUENTE, CA 91719
COUNTY OF LOS ANGELES

DIAGRAM BUILDING AREAS
☒ EXISTING (1-A)
☐ BASIC PLANS (12-A)
☐ FINAL PLANS (13-A)



SITE PLAN
FACILITIES
Measure BB

Planning

- ☐ Meetings with Phase 1 and Phase 2 schools' staff to discuss the upcoming 21st Century Classroom project



Los Altos Elementary School



Mesa Robles School

Planning

- ❑ Architectural services master agreement's template was prepared based on the Measure-BB bond projects' needs.
- ❑ Master agreements were sent to the Board-approved architectural firms for their review and comments.
- ❑ Business Services Division has received architectural firms' comments on the master agreement.



Thank you!