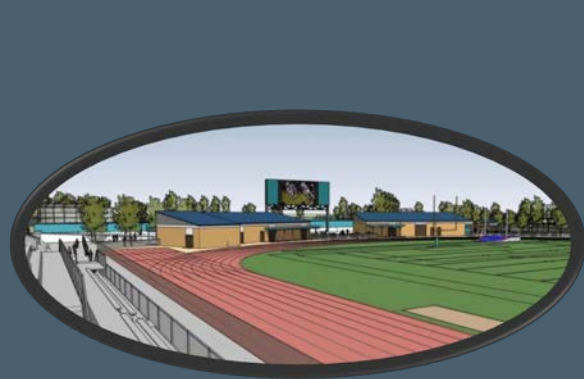




Hacienda La Puente Unified School District

Measure BB - Bond Projects Monthly Report



Regular Board Meeting
July 26, 2018

Business Services Division

Planning

- ❑ The design phase has started with accessibility compliance as priority for the following projects:
 - 21st Century Classrooms at Cedarlane K-8
 - Interim Housing at Cedarlane K-8
 - 21st Century Classrooms at Grandview K-8
 - 21st Century Classrooms at Mesa Robles K-8
 - Interim Housing at Mesa Robles K-8
 - 21st Century Classrooms at Workman ES
 - 21st Century Classrooms at Nelson ES
 - 21st Century Classrooms at Los Altos ES
 - Interim Housing at Los Altos ES

Planning – cont.

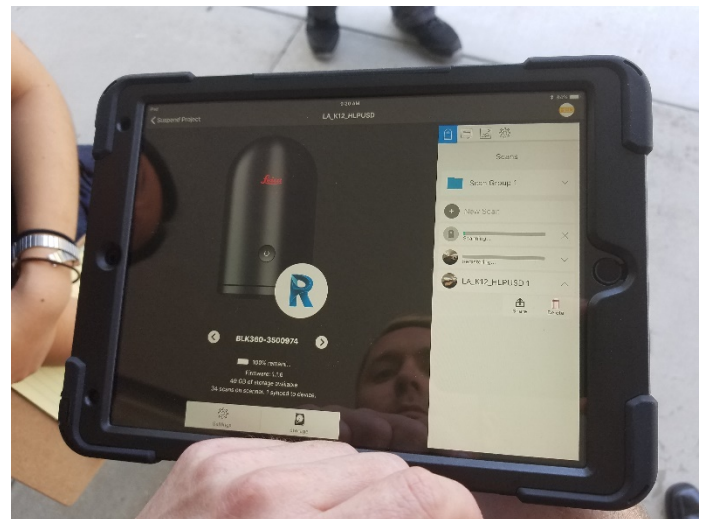
- Assessment of building elements have been completed for the following schools:

- Los Altos ES
- Nelson ES
- Workman ES
- Los Altos ES
- Cedarlane K-8
- Grandview K-8
- Mesa Robles K-8
- Newton MS
- Orange Grove MS
- Sierra Vista MS
- Sparks MS
- Los Altos HS
- La Puente HS
- Wilson HS
- Workman HS
- Los Altos HS

Planning – cont.

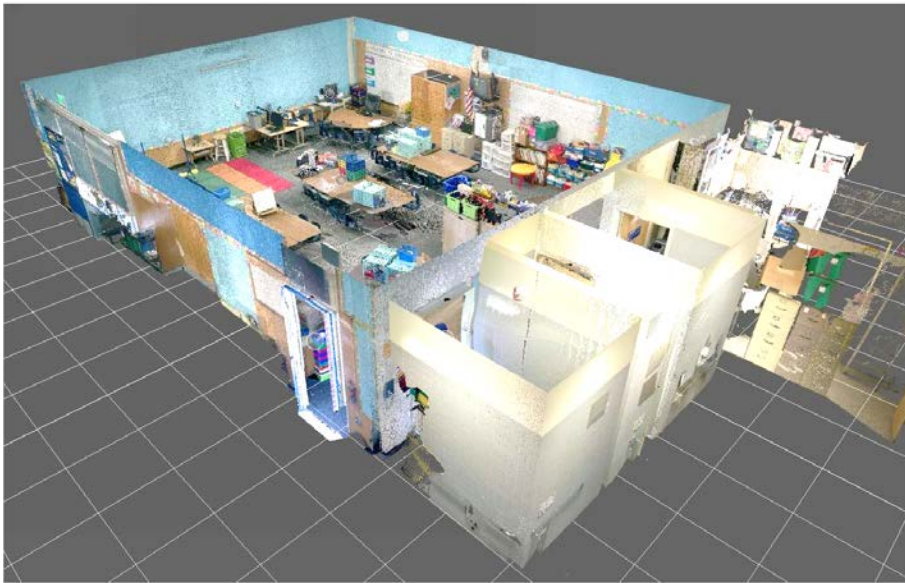
- ❑ Design Guidelines are being prepared by HED.
- ❑ Four (4) rooms were digitally scanned by the architect as follows:
 - Classroom at Nelson ES
 - Band Room at Newton MS
 - Kindergarten Classroom at Mesa Robles
 - Science Lab at Mesa Robles

Planning – cont.



Planning – cont.

- ❑ Scanned rooms will be translated to Revit software for 3D modeling purposes.
- ❑ Samples of scanned rooms are as follows:



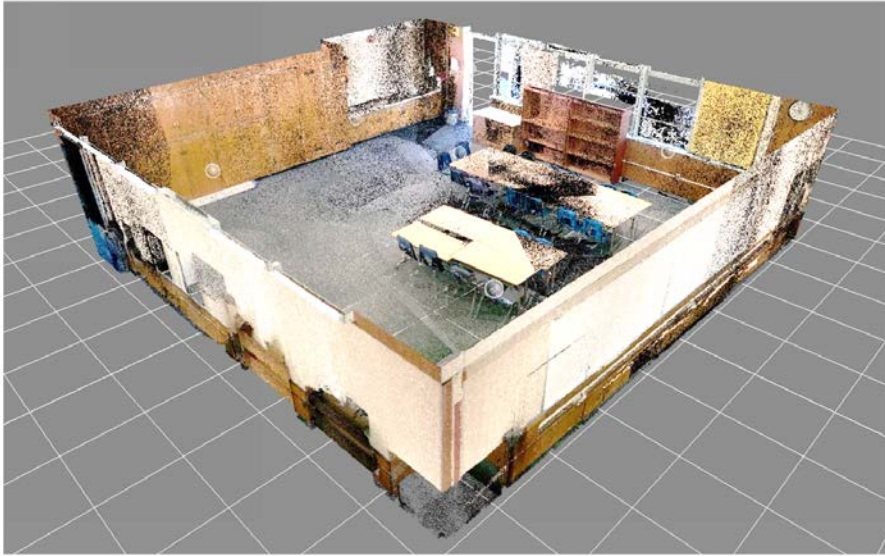
MESA ROBLES K-8 KINDERGARTEN

Planning – cont.



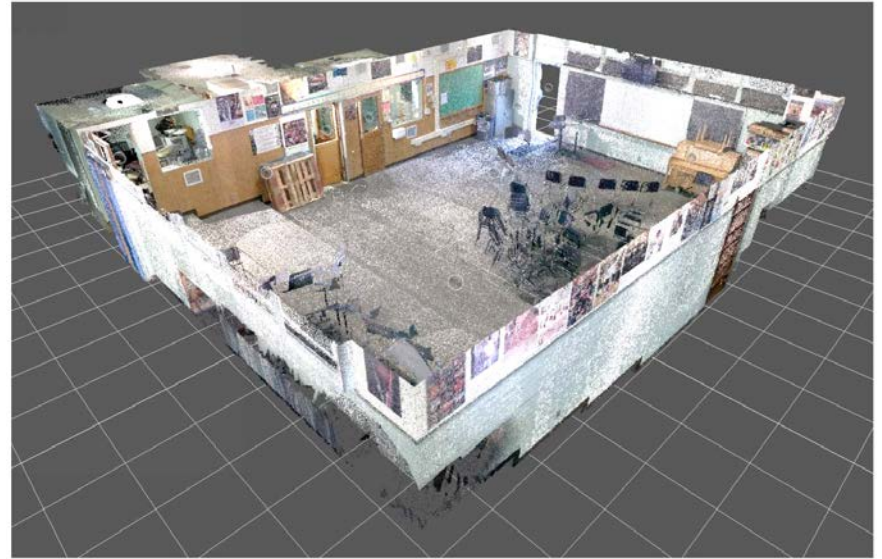
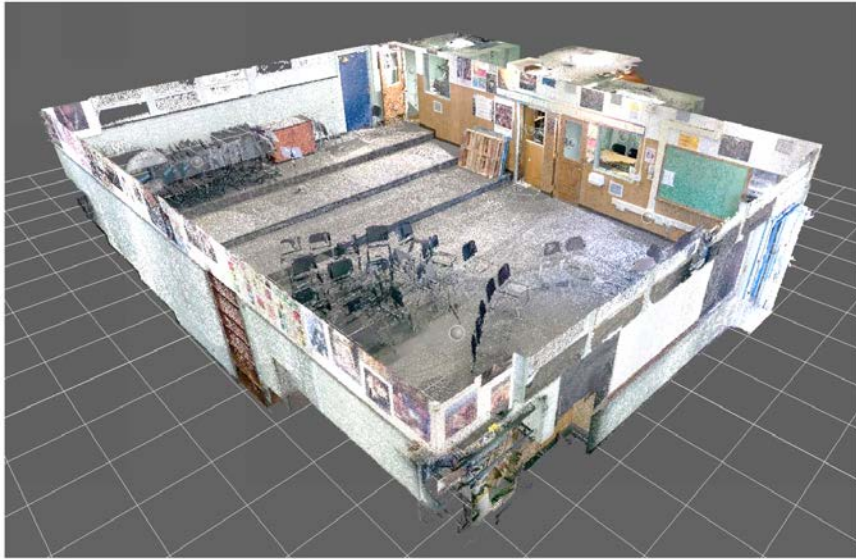
MESA ROBLES K-8 SCIENCE LAB

Planning – cont.



NELSON ES CLASSROOM

Planning – cont.



NEWTON MS BAND ROOM

Planning – cont.

- Currently evaluating:
 - DSA requirements for the 21st Century Classroom and Interim Housing projects.
 - School sites for future phases.



Thank you!