

# **Installing The Secure Browser on a Windows Computer**


If you are going to be taking your Spring State Assessments (CAASPP, ELPAC) on your own Windows computer, first you need to install the Secure Browser. It's easy to do. Follow the steps in this guide and your computer will soon be ready for taking your tests.

CAASPP  
California Assessment of Student Performance and Progress

Contact Us

## WELCOME TO THE CAASPP PORTAL

Home About Test Administration Resources Training Get Involved Calendar System Status



Test Operations Management System (TOMS)

Test Administrator Interface for All Online Tests

Practice & Training Tests

Tools for Teachers

California Educator Reporting System (CERS)

Completion Status

Smarter Balanced Content Explorer

Smarter Balanced Interim Assessments

### Latest News and Tips for the CAASPP Administration

- The California Technical Assistance Center (CTAC) is closed on Monday, January 18, 2021. CTAC wishes you and your family a safe holiday. All phone calls and emails will be returned when the office reopens on Tuesday, January 19, 2021.
- Implications of COVID-19  
Please visit the [Implications of COVID-19](#) and the [Suspension of Summative Testing](#) web page for up-to-date information and updates on the impacts of the changes in regard to the novel coronavirus disease 2019 (COVID-19). This can be found within the [About] navigation tab. Details will be added and updated on this web page as they become available. The "Last Updated" date will allow LEAs to easily monitor when a change occurs.
- The Smarter Balanced Interim Assessments will remain available to be administered remotely, without the use of a secure browser, through the 2020-2021 school year. Visit the [Smarter Balanced Interim Assessments](#) page to find directions and resources for using the interim assessments for distance learning.

#### Upcoming Events

- Registration is now available for the virtual Pretest Workshop. The workshop sessions will provide information about what's new for the CAASPP and ELPAC assessments and what's necessary to prepare for the administration of the CAASPP and the ELPAC.

[See all events >](#)

#### Testing in California

California local educational agency (LEA) testing coordinators can use this website to find helpful information, instructions, training, forms, and external links for test administration.

LEAs are administering the following tests:

### Additional Resources

- Visit the [California Department of Education](#) for more information about CAASPP testing in California.
- Visit the [ELPAC website](#) to learn more about the English Language Proficiency Assessments for California.
- View and download supported browsers from the [Secure Browsers](#) web page.
- Visit the [Student Accessibility Resources and Test Settings](#) web page.

1. From your web browser go to [www.CAASPP.org](http://www.CAASPP.org).

2. Scroll down to find the box called "Additional Resources" and click on the "Secure Browsers" link.

3. On the next page, scroll down to the first Windows link (8, 8.1, 10...) and click it.

4. Click on "Download Browse" and the installation file will begin downloading in the lower left corner of your window.

Secure Browsers

For 2020-2021, a Secure Browser must be installed on each computer or tablet that will be used for student testing. The following table lists which operating systems are supported and which Secure Browser to install.

Operating System	Supported Devices	Secure Browser	Related Requirements
<b>Desktop</b>			
<b>Windows</b> 8 (Professional & Enterprise) 8.1 (Professional & Enterprise) 10 (Educational, Professional, & Enterprise) (Versions 1809-2004*) Server 2012 R2, 2016 R2	Desktops/Laptops	Windows Secure Browser	Disable fast user switching. Server 2012 R2 and 2016 R2 are supported when using a thin client.
<b>Windows</b> 10, 10 in S mode (Educational, Professional, & Enterprise) (Versions 1809-2004*)	Desktops/Laptops	Take a Test app	Disable app pre-launching. Create a dedicated test account for non-permissive mode users. Create a desktop shortcut for permissive mode users.
<b>Mac</b> 10.11-10.16*	Desktops/Laptops	Mac Secure Browser	Install the Mac Secure Profile. Disable third-party cookies. Disable fast user switching.
<b>Linux</b> Fedora 30-41* LTS (Chrome) Ubuntu 18.04, 18.04, 20.04* LTS (Chrome)	Desktops		
<b>Mobile</b>			
<b>iOS/iPadOS</b> 12.4 12.4-12.7 14	All 9.7" or larger running a supported version of iOS		
<b>Chrome OS</b>	Chromebooks		version used successfully before summative testing begins.
<b>Windows</b> 8 (Professional & Enterprise) 8.1 (Professional & Enterprise) 10 (Professional & Enterprise)	CAI supports any tablet running Windows 8, 8.1, and 10, but has some extensive testing only on Surface Pro.	Windows Secure Browser	Disable fast user switching.

**Important Information**

Windows 8, 8.1, 10; Server 2012 R2, 2016 R2

Windows (Take a Test) 10, 10 in S Mode

**Technical Resources**

- For information about supported operating systems, network and internet requirements and recommendations, general hardware and software requirements and Secure Browser installation, including supported individual and network installation options, please visit the *Quick Guide for Setting Up Your Online Testing Technology*.
- For information about supported hardware and software for benchmarking as well as information about configuring JAWS, see the *Assistive Technology Manual*.
- Only supported operating system versions are listed in the table above.
- These operating systems are supported when software is directly installed on machines and devices. Some types of network installation are also supported.

Download the Windows Secure Browser:

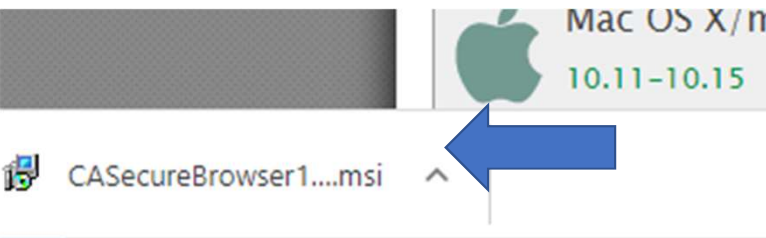
Windows 8, 8.1, 10; Server 2012 R2, 2016 R2

Windows (Take a Test)

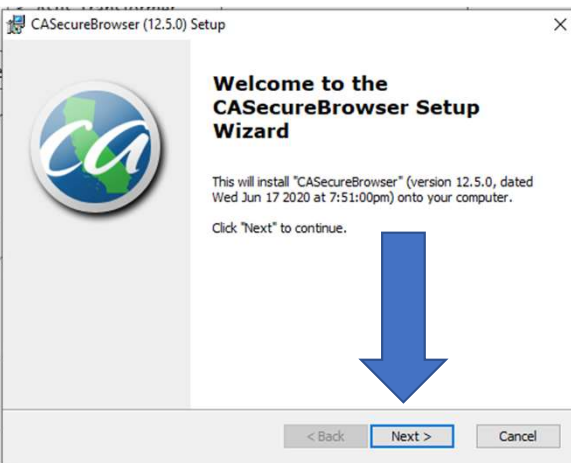
**Download Browser**

Click here to download the Secure Browser.

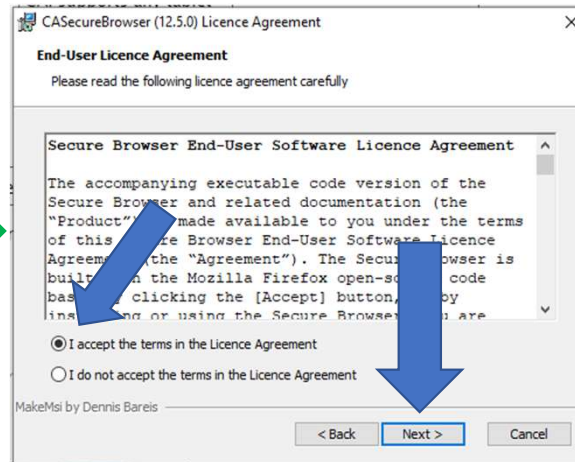
5. Once the download has finished, double click on the file to open the Setup Wizard.



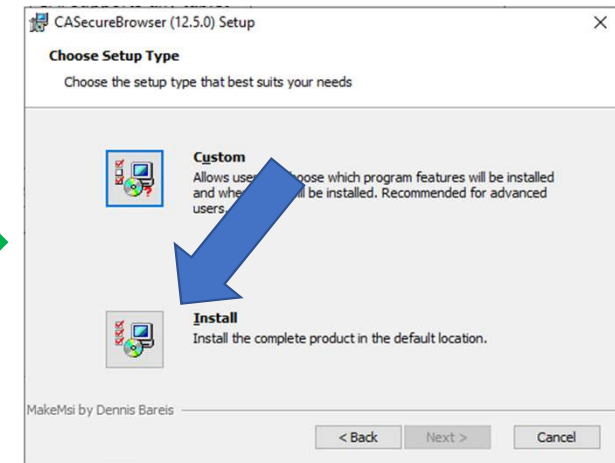
6. Click "Next"



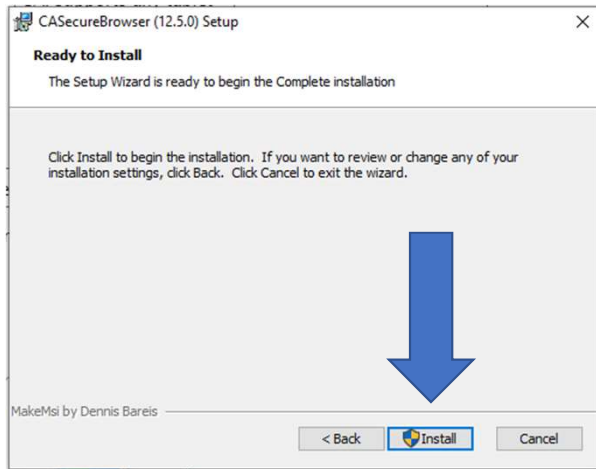
7. Click to fill the circle agreeing to the terms, then click "Next"



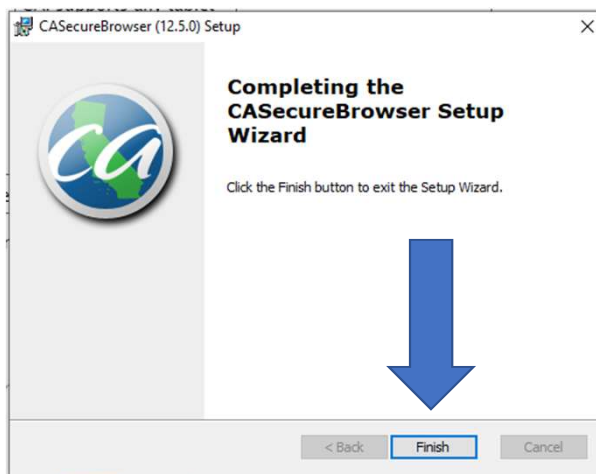
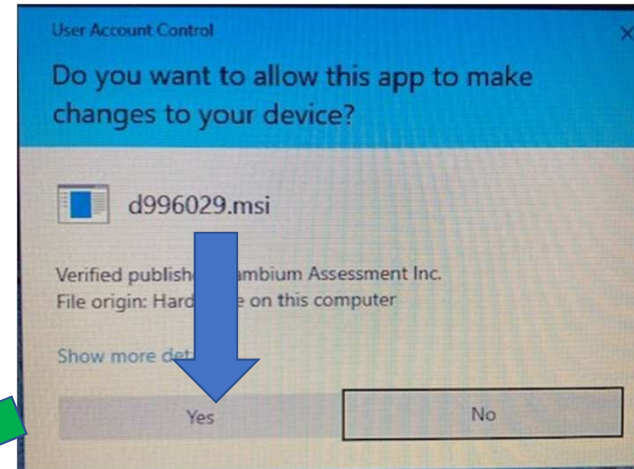
8. Click "Install"



9. Click "Install"



10. Click "Yes". Installation will begin.



11. Click "Finish" to complete the installation. You will know it was, successful if the ikon appears on your desktop.



When it is time to take your tests, this is where you will click.

**Congratulations!**  
**You're now ready to**  
**take your State**  
**Tests!**