



Hacienda La Puente Unified School District

Measure BB - Bond Projects Monthly Report



Regular Board Meeting
October 26, 2017

Business Services Division

Latest News

- ❑ Schools' Principals receive tasks and updates regarding Measure BB.

Planning

- ❑ Business Services Division has received Phase 1 and Phase 2 School Principals' comments on schools' configurations.
- ❑ The following pages are examples of communications received from the Principals.

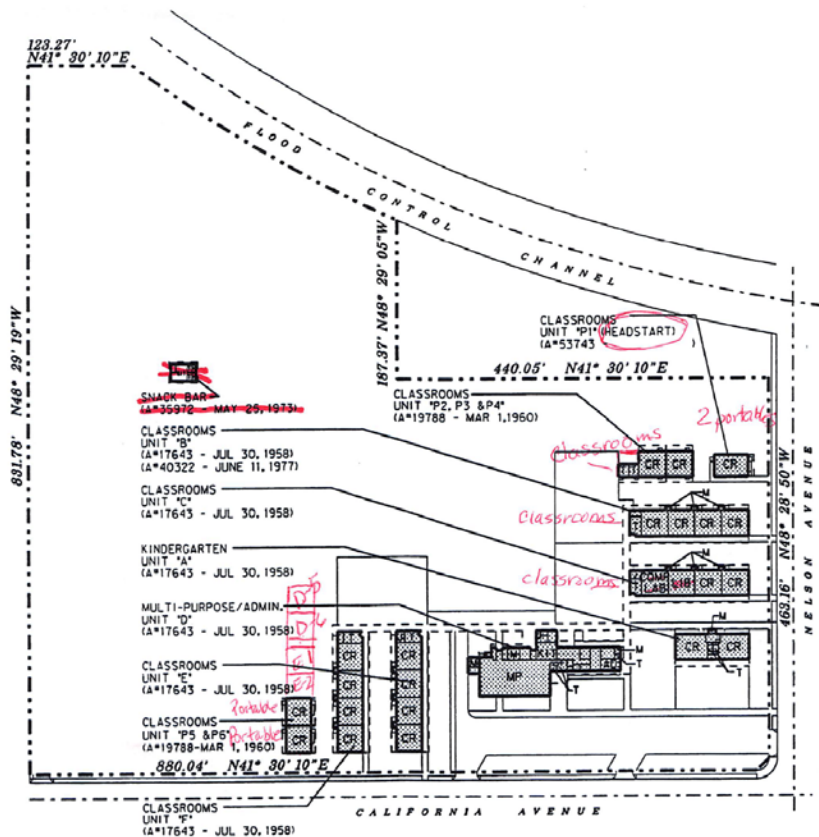
Phase 1



NELSON ELEMENTARY SCHOOL

330 N. CALIFORNIA AVENUE, LA PUENTE, CALIFORNIA 91744
 HACIENDA LA PUENTE UNIFIED SCHOOL DISTRICT
 15959 E. GALE AVE. LA PUENTE, CA 91749
 COUNTY OF LOS ANGELES

DIAGRAM BUILDING AREAS
 EXISTING (11-A)
 BASIC PLANS (12-A)
 FINAL PLANS (13-A)



SITE LEGEND:
 BUILDING > 30 YRS. OLD
 PORTABLES > 20 YRS. OLD

SITE INFORMATION:
 LAND AREA 12.37 ACRES
 STUDENTS 541 STUDENTS



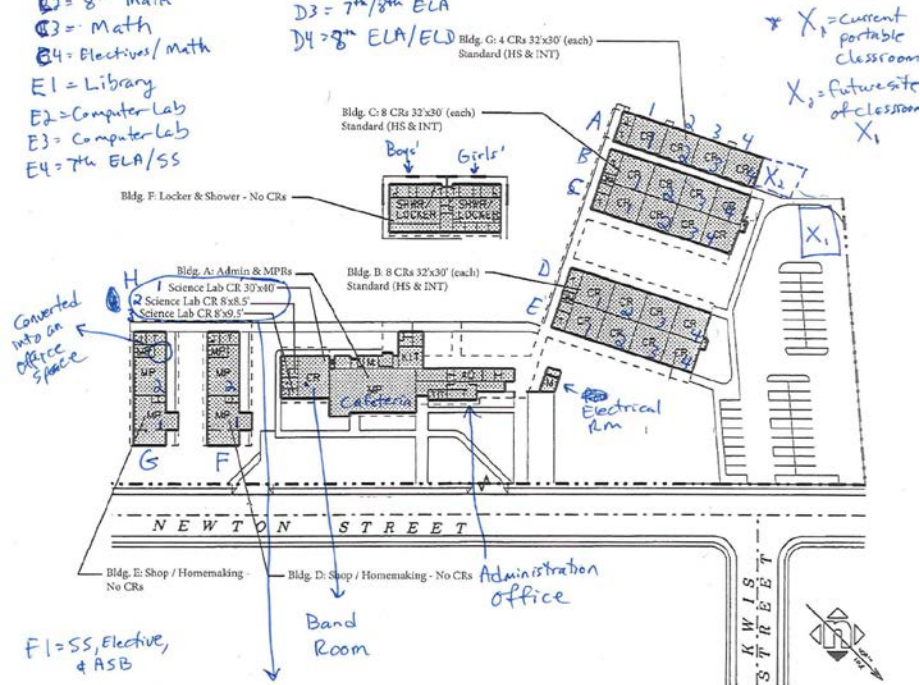
NEWTON MIDDLE SCHOOL

15616 NEWTON STREET, HACIENDA HEIGHTS, CALIFORNIA 91745
 HACIENDA LA PUENTE UNIFIED SCHOOL DISTRICT
 15959 E. GALE AVE. LA PUENTE, CA 91749
 COUNTY OF LOS ANGELES

DIAGRAM BUILDING AREAS
 EXISTING (11-A)
 BASIC PLANS (12-A)
 FINAL PLANS (13-A)

- A1 = 6th Grade SS
- A2 = 6th Grade ELA
- A3 = 6th Grade ELA/SS
- A4 = 6th Math / 7th Sci
- B1 = 6th Sci / Math
- B2 = 8th math
- B3 = Math
- B4 = Electives / math
- E1 = Library
- E2 = Computer Lab
- E3 = Computer Lab
- E4 = 7th ELA/SS
- B1 = RSP
- B2 = 6th Math/Sci
- B3 = Chinese
- B4 = Computer Lab
- D1 = 8th Sci
- D2 = 7th SS
- D3 = 7th/8th ELA
- D4 = 8th ELA/ELD

Index = SS = Social Science
 ELA = English
 Sci = Science
 RSP = Special Educ
 SDC = Special Educ
 ELD = English Language development



SITE PLAN
FACILITIES
 Measure BB

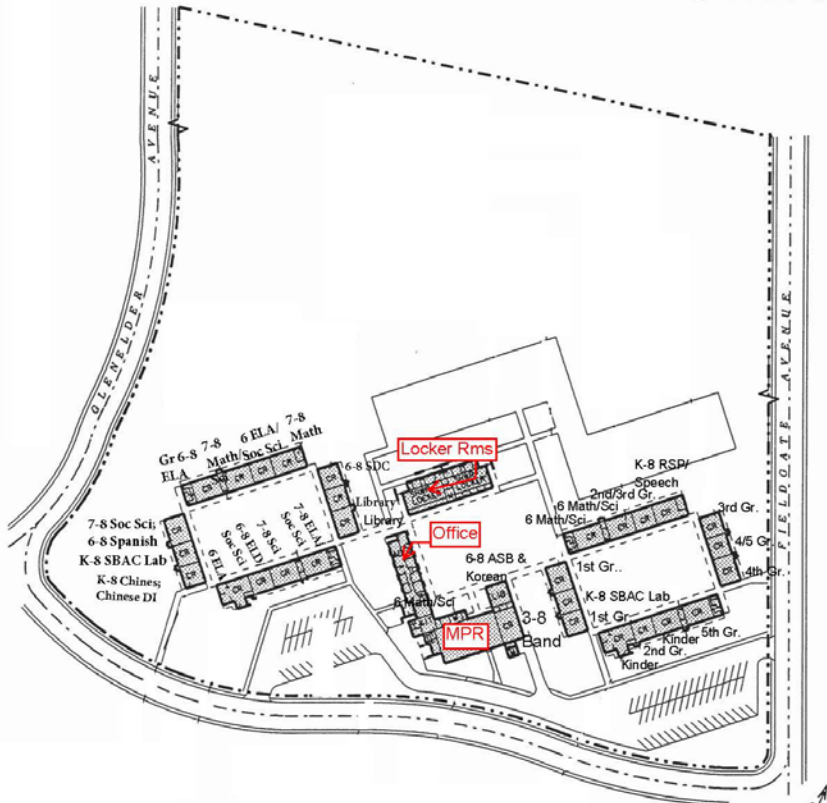
Phase 1



CEDARLANE MIDDLE SCHOOL

16333 CEDARLANE DRIVE, HACIENDA HEIGHTS, CALIFORNIA 91745
 HACIENDA LA PUENTE UNIFIED SCHOOL DISTRICT
 18959 E. GALE AVE. LA PUENTE, CA 91749
 COUNTY OF LOS ANGELES

DIAGRAM BUILDING AREAS	
	EXISTING (1-A)
	BASIC PLANS (12-A)
	FINAL PLANS (13-A)



9/14/17 Ellen Park, Principal

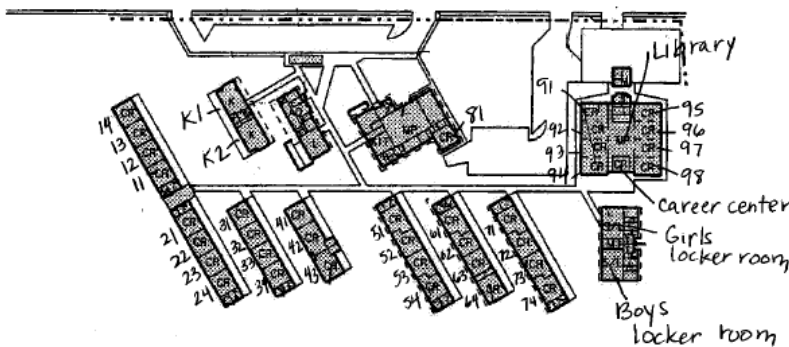
SITE PLAN
FACILITIES
 Measure BB



GRANDVIEW K-8 SCHOOL

795 N. GRANDVIEW LANE, VALINDA, CALIFORNIA 91744
 HACIENDA LA PUENTE UNIFIED SCHOOL DISTRICT
 18959 E. GALE AVE. LA PUENTE, CA 91749
 COUNTY OF LOS ANGELES

DIAGRAM BUILDING AREAS	
	EXISTING (1-A)
	BASIC PLANS (12-A)
	FINAL PLANS (13-A)



SITE PLAN
FACILITIES
 Measure BB

Phase 2



SPARKS MIDDLE SCHOOL

15100 GIORDANO STREET, LA PUENTE, CALIFORNIA 91744
 HACIENDA LA PUENTE UNIFIED SCHOOL DISTRICT
 15959 E. GALE AVE. LA PUENTE, CA 91749
 COUNTY OF LOS ANGELES

DIAGRAM BUILDING AREA:
 EXISTING (1) -
 BASIC PLANS (2) -
 FINAL PLANS (3) -

Los Altos Elementary Phase 2 Bond report

Basic Information

- School site currently has no empty rooms or offices.
- Following service providers work in cafeteria, library after 11 a.m., and other areas on campus including benches and two converted closets: RSP, Psychologist, SST COSA, Counselor, APE, OT, and Speech Services
- Rooms G1 and G2 slated to be replaced by new building (G1 and G2) due to age and structural needs.
- School will need an additional 2 portables for the 2018 school year due to projected growth of DI into fifth grade and additional third grade classroom.

Classroom Used as other facilities

- B2 is library
- F1 is SBAC lab 1
- G4 is SBAC lab 2

Administration Office

- Main office
- Nurses
- Meeting Room
- Principals Office

Cafeteria

- Kitchen
- Cafeteria
- Stage (used as ART and ASES headquarters)
- COSA/Counselor room - former storage closet for cafeteria manager

C wing

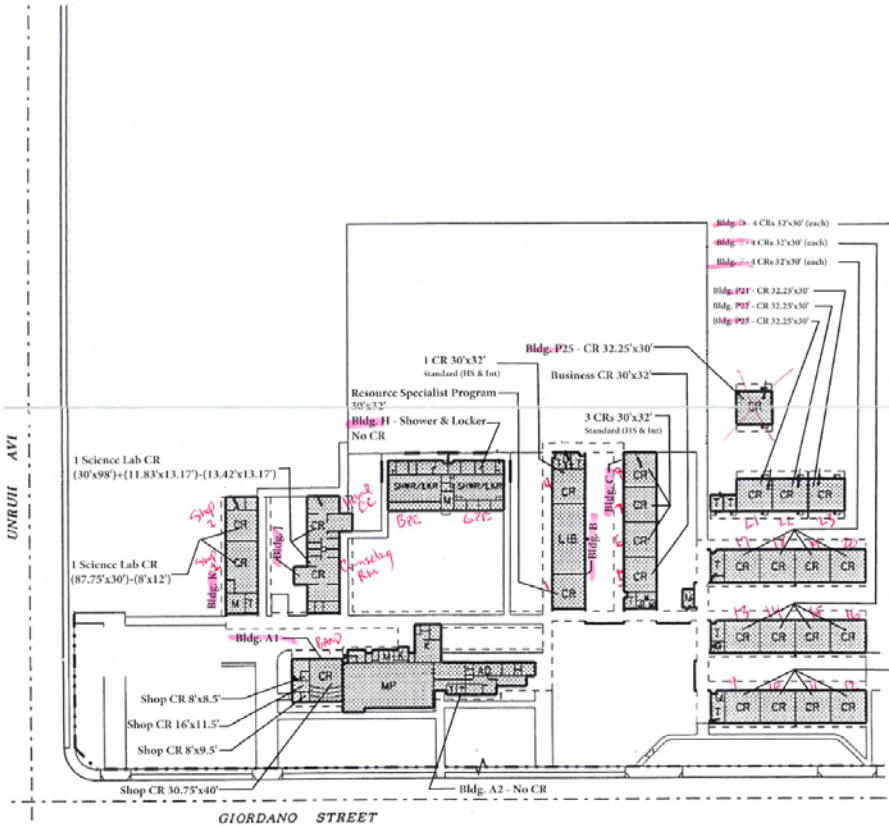
- C1 Kinder
- C2 Kinder

B Wing

- B1 First
- B2 Library
- B3 Kinder
- B4 First

A Wing

- A1 First



SITE PLAN
FACILITIES
 Measure BB

Phase 2



MESA ROBLES ELEMENTARY SCHOOL

16060 MESA ROBLES DRIVE, HACIENDA HEIGHTS, CALIFORNIA 91745
 HACIENDA LA PUENTE UNIFIED SCHOOL DISTRICT
 15959 E. GALE AVE. LA PUENTE, CA 91719
 COUNTY OF LOS ANGELES

DIAGRAM BUILDING AREAS

<input type="checkbox"/> EXISTING	11-A
<input type="checkbox"/> BASIC PLANS	12-A1
<input type="checkbox"/> FINAL PLANS	13-1

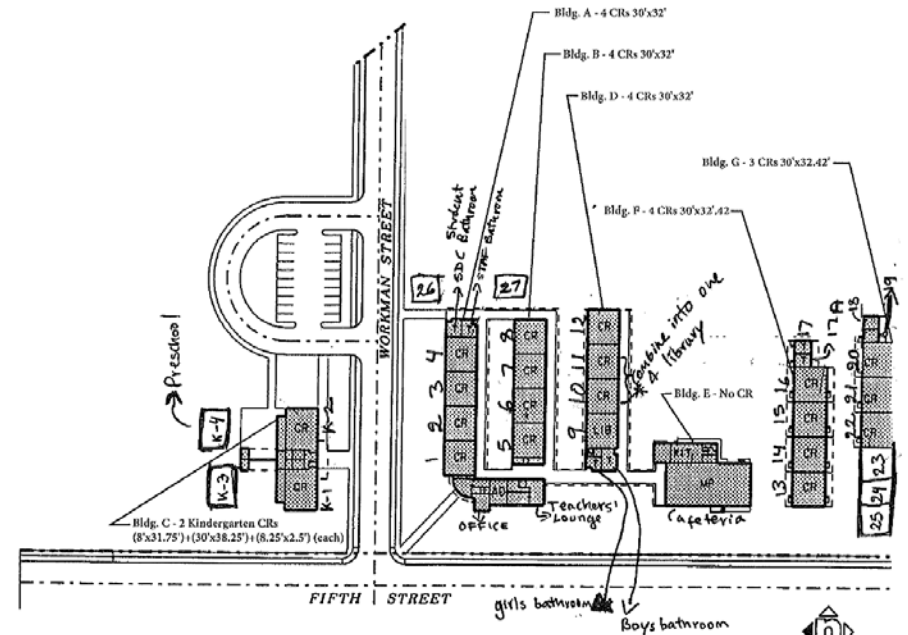
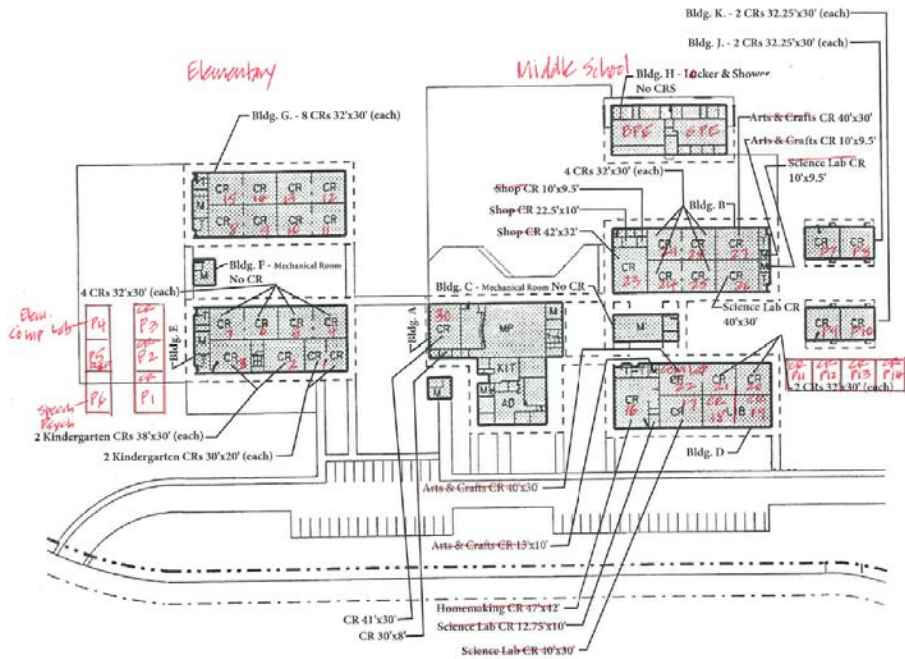


WORKMAN ELEMENTARY SCHOOL

16000 WOPKMAN STREET, LA PUENTE, CALIFORNIA 91744
 HACIENDA LA PUENTE UNIFIED SCHOOL DISTRICT
 15959 E. GALE AVE. LA PUENTE, CA 91719
 COUNTY OF LOS ANGELES

DIAGRAM BUILDING AREAS

<input type="checkbox"/> EXISTING	11-A1
<input type="checkbox"/> BASIC PLANS	12-A1
<input type="checkbox"/> FINAL PLANS	13-A1



SITE PLAN
FACILITIES
 Measure BB



SITE PLAN
FACILITIES
 Measure BB

Planning

- Meetings with Phase 1 and Phase 2 schools' staff to discuss the upcoming 21st Century Classroom project



Los Altos Elementary School



Mesa Robles School

Planning

- ❑ Architectural services master agreement's template was prepared based on the Measure-BB bond projects' needs.
- ❑ Master agreements were sent to the Board-approved architectural firms for their review and comments.
- ❑ Business Services Division has received architectural firms' comments on the master agreement.



Thank you!