



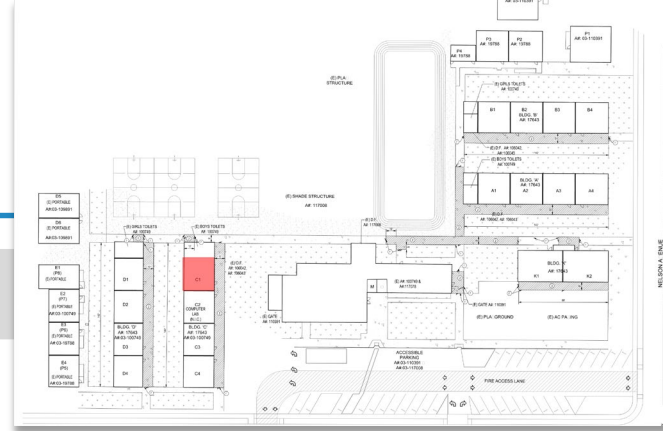
**21st CENTURY CLASSROOM IMPROVEMENTS | PHASES 1 & 2
BOND UPDATES**

January 21, 2020

NELSON PILOT CLASSROOM: ROOM C-1 PLANNING

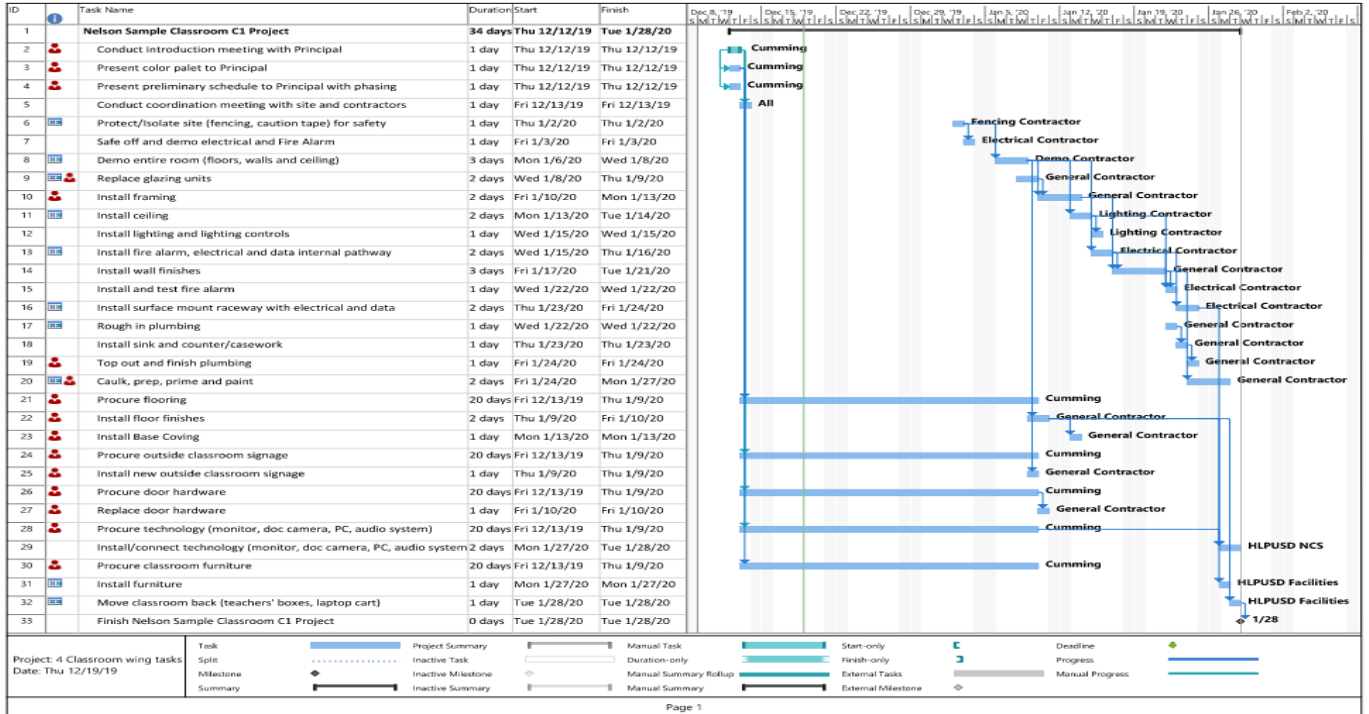
ACTION ITEMS

- Move out **COMPLETE**
- Pre-Construction project walk 12-20-19 **COMPLETE**
- Color pallet planning and materials selection for three color schemes **COMPLETE**
- Request for quotes 12-20-19 **COMPLETE**
- Quotes received 1-06-20 Responses currently under review
- Demo **Project walk 1-10-20**
- Install floor, walls, glazing, technology, power, finishes, fire alarm, lighting **Pricing Negotiations Underway**
- New furniture **Procure Mid January**
- Move in **February 2020**



NELSON PILOT CLASSROOM: ROOM C-1

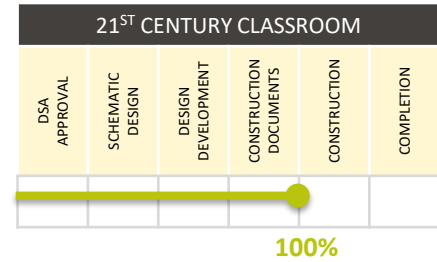
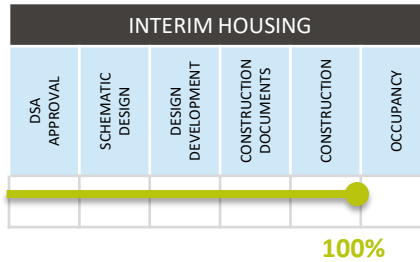
PRELIMINARY SCHEDULE



Project: A Classroom wing tasks
Date: Thu 12/19/19

PROJECT STATUS

LOS ALTOS ELEMENTARY SCHOOL

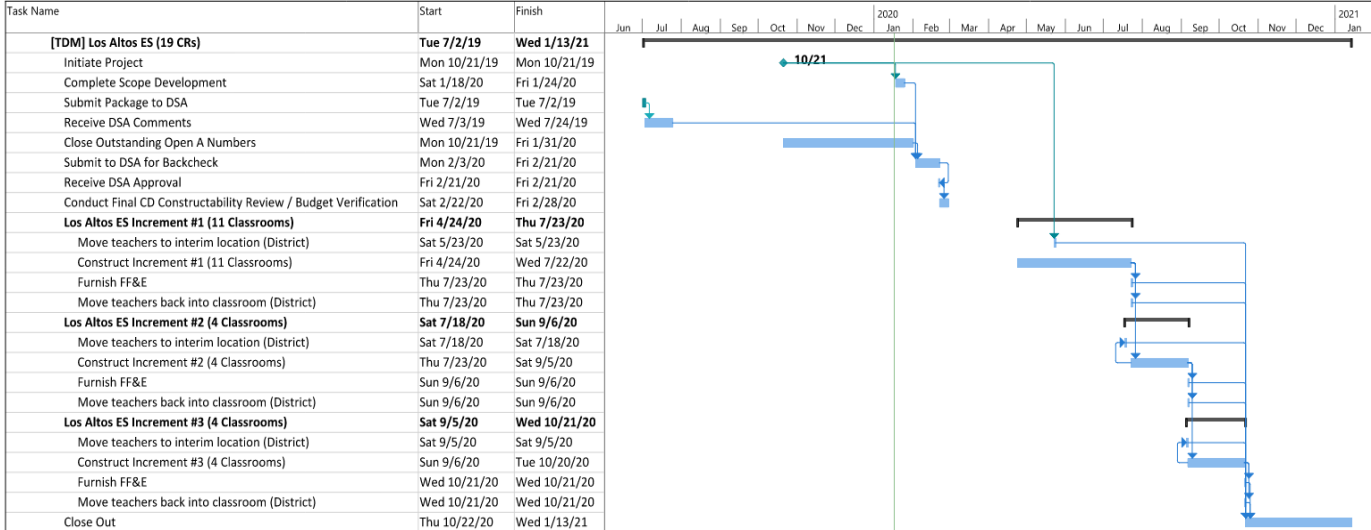


NOTES:

- 100% complete with construction of the Interim Housing Project
- Interim housing ready to be occupied
- 100% complete with construction documents for the 21st Century Classroom Project
- DSA backcheck appointment date awaiting certification of (4) open DSA Applications

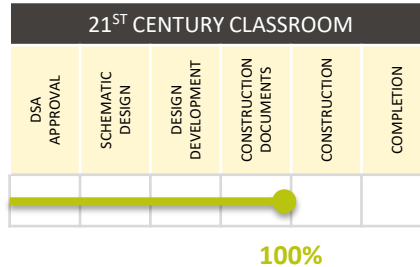
PROJECT STATUS

LOS ALTOS ELEMENTARY SCHOOL



PROJECT STATUS

NELSON ELEMENTARY SCHOOL

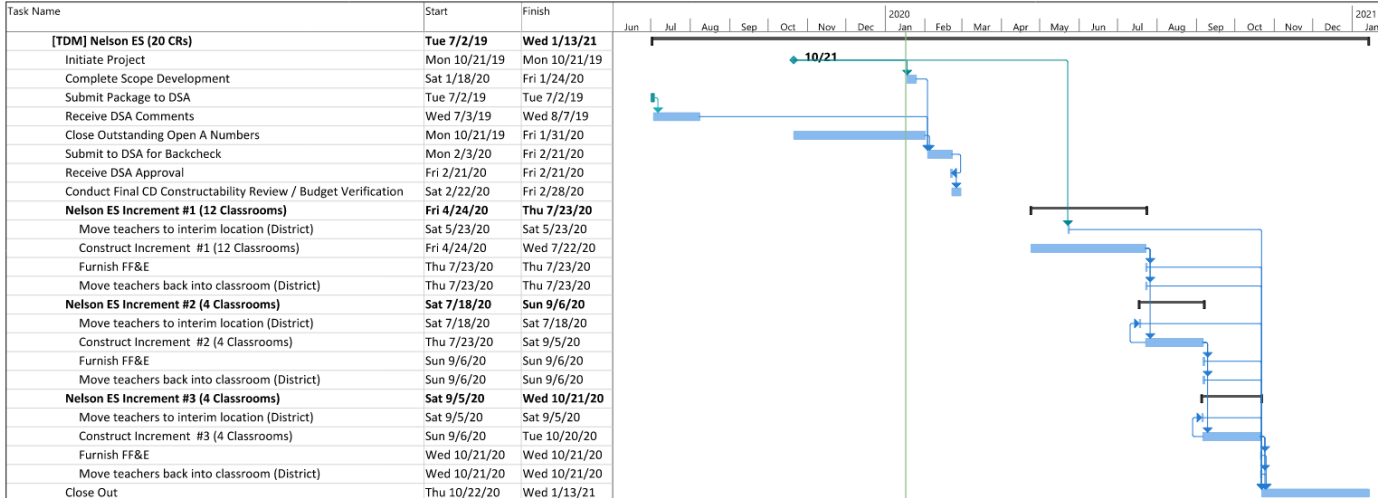


NOTES:

- 100% complete with construction documents for the 21st Century Classroom Project
- DSA backcheck appointment date awaiting certification of (1) open DSA Application
- Room C1 pilot classroom planning in progress

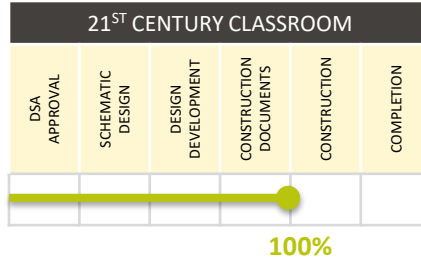
PROJECT STATUS

NELSON ELEMENTARY SCHOOL



PROJECT STATUS

WORKMAN ELEMENTARY SCHOOL

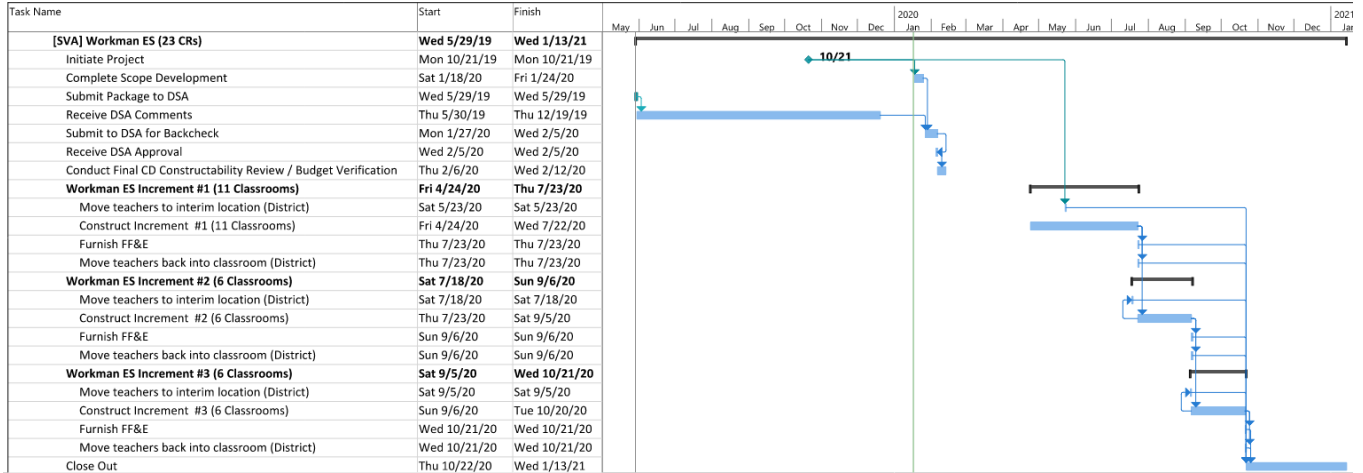


NOTES:

- 100% complete with construction documents for the 21st Century Classroom Project
- Architect to resolve DSA backcheck comments
- DSA backcheck appointment scheduled for February 5, 2020

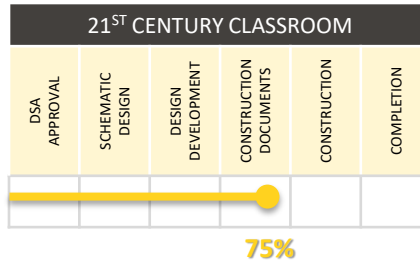
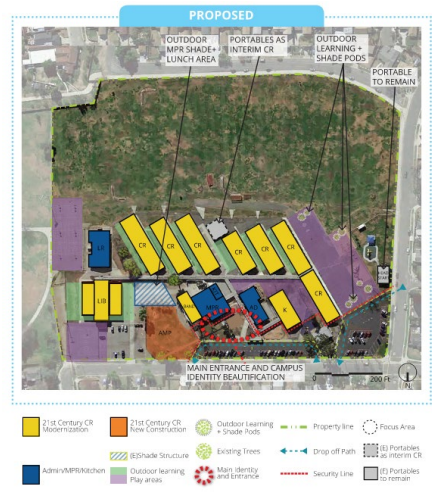
PROJECT STATUS

WORKMAN ELEMENTARY SCHOOL



PROJECT STATUS

GRANDVIEW ACADEMY

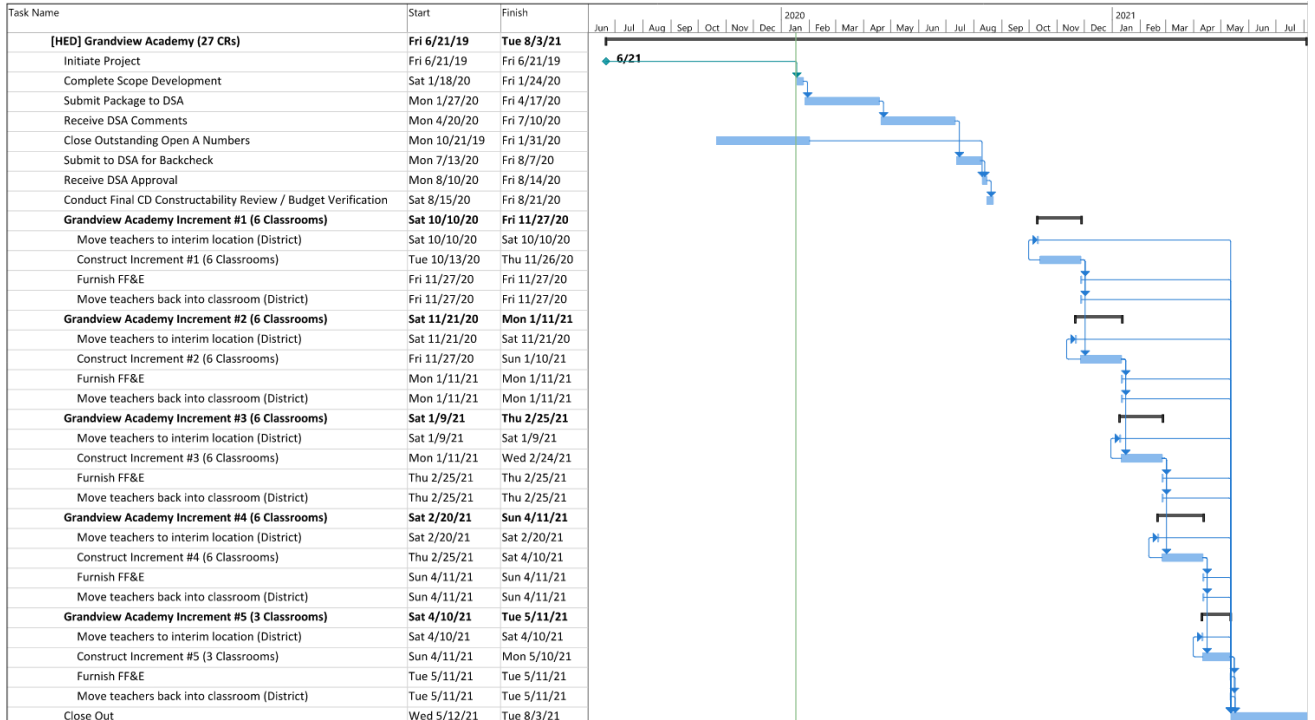


NOTES:

- 75% complete with construction documents for the 21st Century Classroom Project
- DSA Submittal in February anticipated
- DSA approval contingent upon certification of (3) open DSA Applications

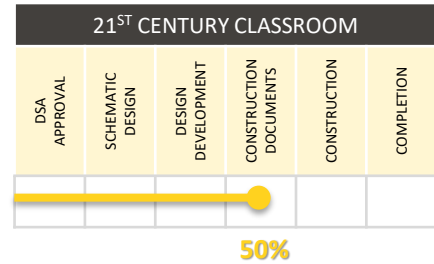
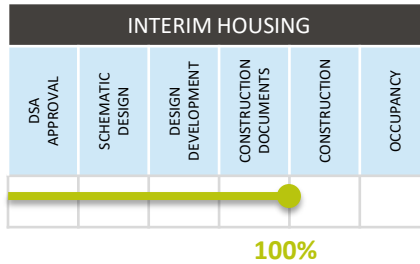
PROJECT STATUS

GRANDVIEW ACADEMY



PROJECT STATUS

NEWTON MIDDLE SCHOOL

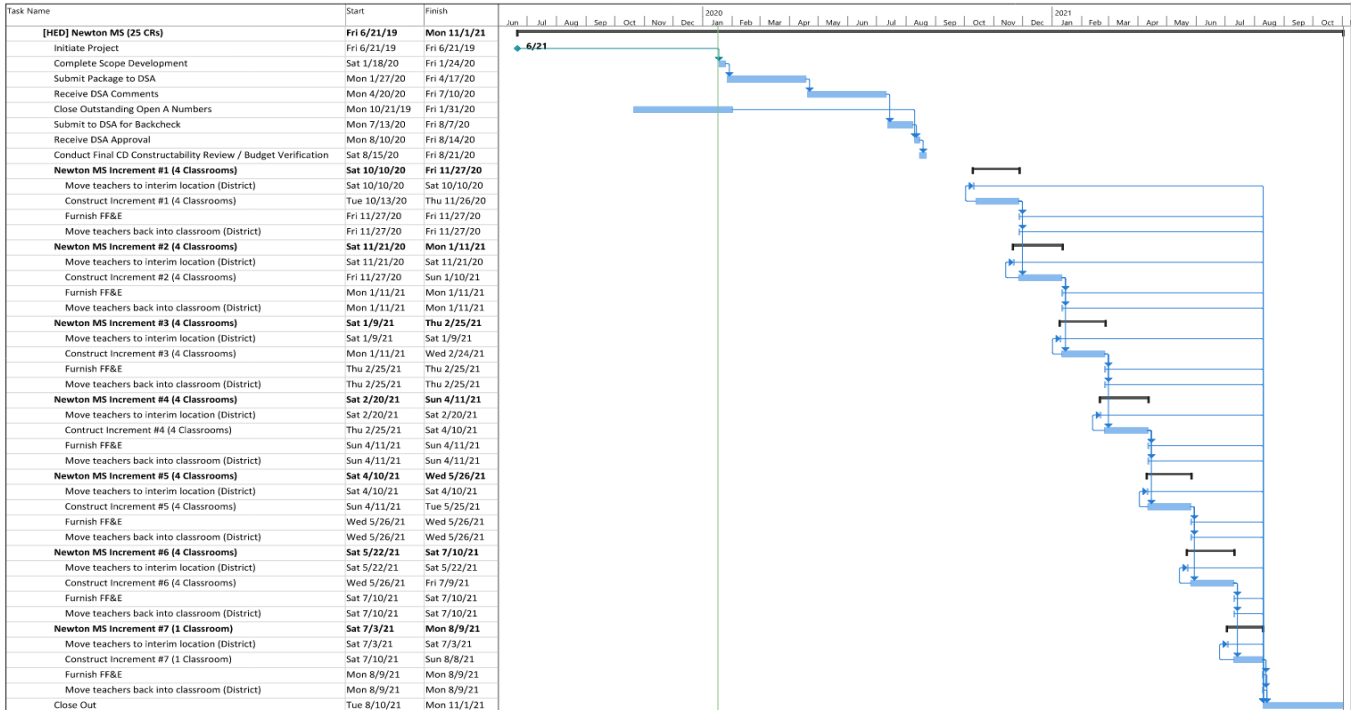


NOTES:

- 100% complete with construction documents for the Interim Housing Project
- 50% complete with construction documents for the 21st Century Classroom Project
- DSA Submittal for the 21st Century Classroom Project in February anticipated
- DSA approval contingent upon certification of (3) open DSA Applications

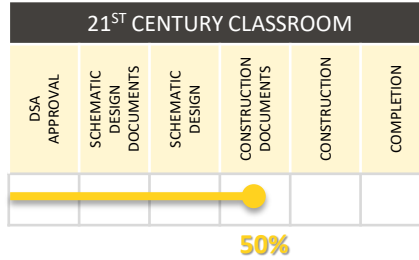
PROJECT STATUS

NEWTON MIDDLE SCHOOL



PROJECT STATUS

SPARKS MIDDLE SCHOOL

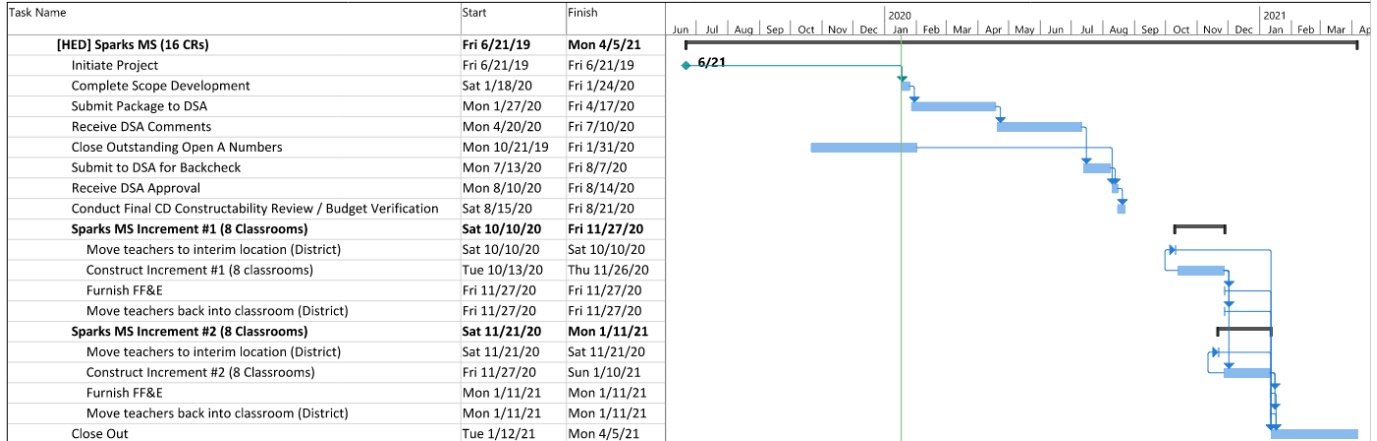


NOTES:

- 50% complete with construction documents for the 21st Century Classroom Learning Project
- DSA Submittal for the 21st Century Classroom Project in February anticipated
- DSA approval contingent upon certification of (3) open DSA Applications

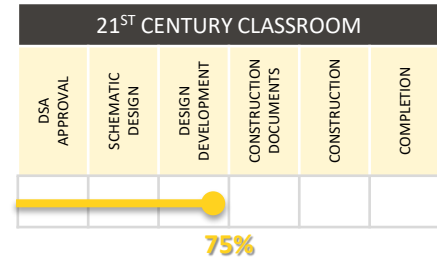
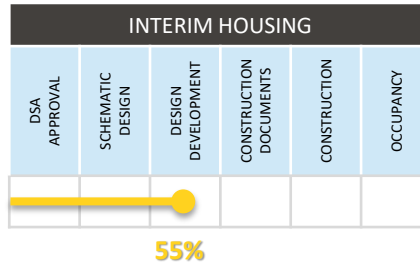
PROJECT STATUS

SPARKS MIDDLE SCHOOL



PROJECT STATUS

CEDARLANE ACADEMY

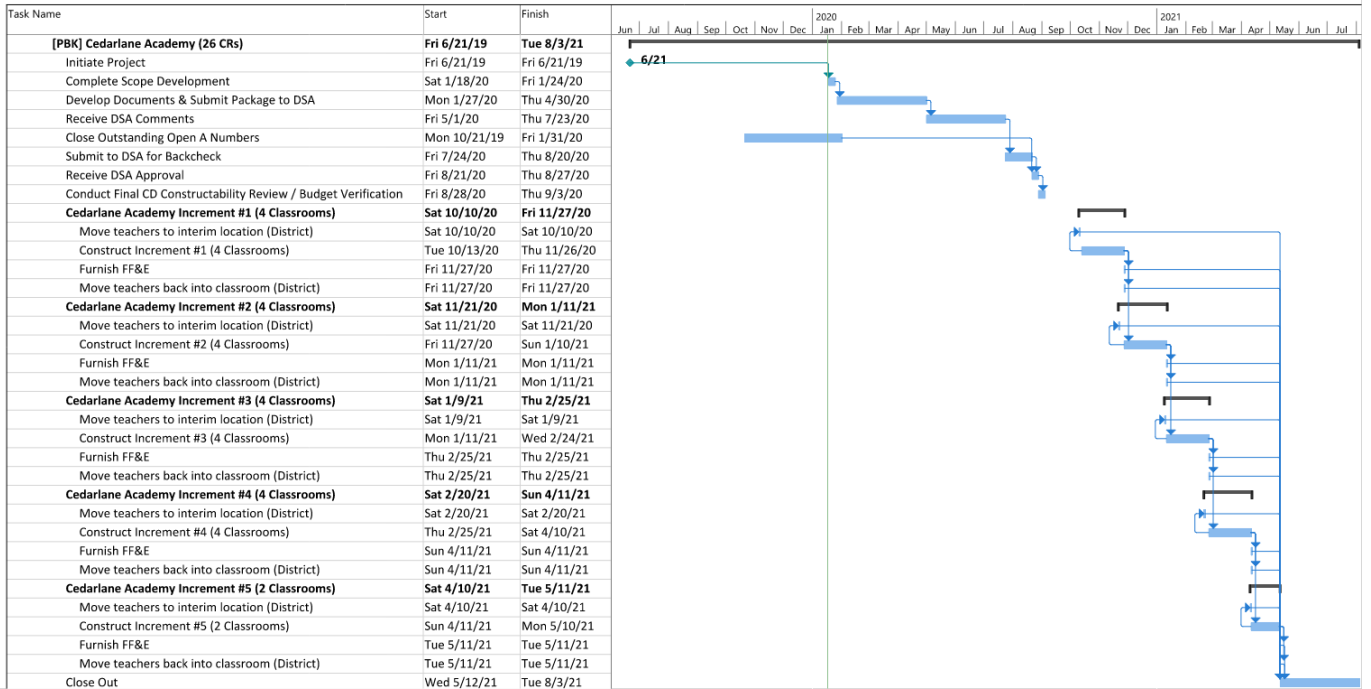


NOTES:

- 55% complete with design development for the Interim Housing Project
- 75% complete with construction documents for the 21st Century Classroom Project
- New fire hydrant with Suburban Water for Design. Deposit has been paid and SWS is now in design phase. Water company Scope completion anticipated March 24, 2020
- DSA approval contingent upon certification of (4) open DSA Applications

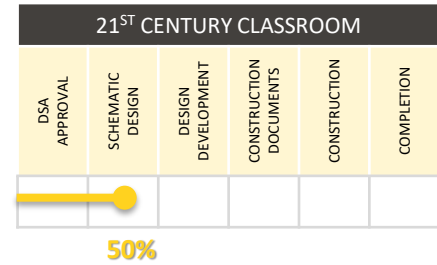
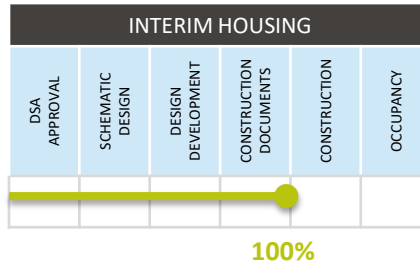
PROJECT STATUS

CEDARLANE ACADEMY



PROJECT STATUS

MESA ROBLES SCHOOL

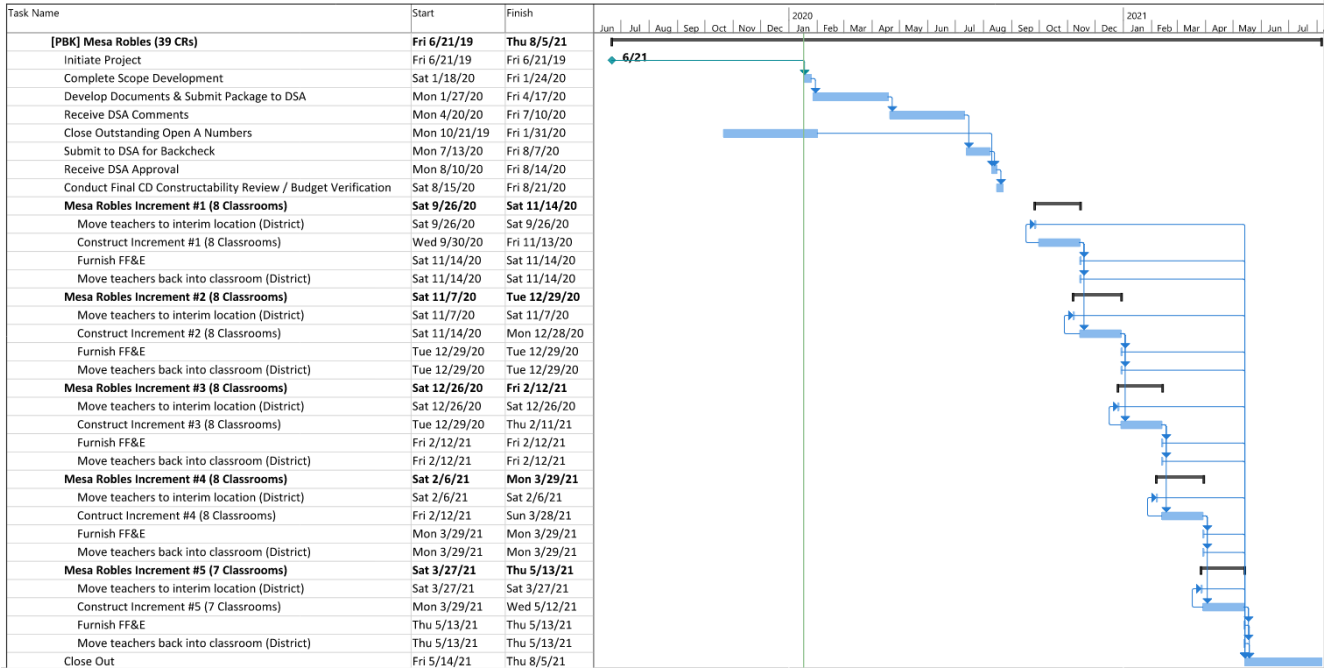


NOTES:

- 100% complete with construction documents for the Interim Housing Project
- DSA approved Interim Housing on November 26, 2019
- Interim Housing estimated to begin construction in January 2020
- 50% complete with schematic design for the 21st Century Classroom Project

PROJECT STATUS

MESA ROBLES SCHOOL



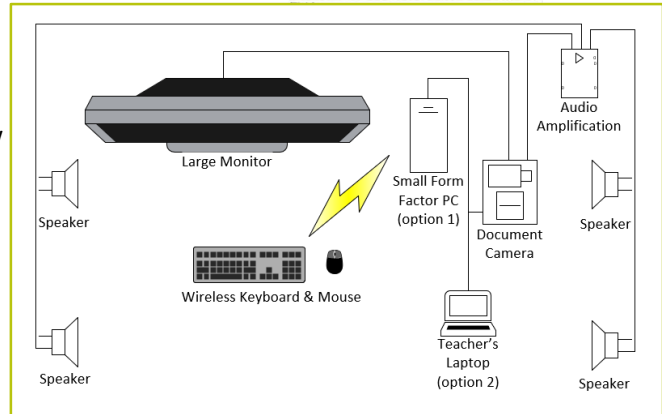
MASTER SCHEDULE

ID	Task Name	Start	Finish	2020												2021																	
				Oct	Nov	Dec	Jan	Feb	Mar	Apr	May	Jun	Jul	Aug	Sep	Oct	Nov	Dec	Jan	Feb	Mar	Apr	May	Jun	Jul	Aug	Sep	Oct	Nov				
1	Phase 1 & Phase 2 Program	Wed 5/29/19	Mon 11/1/21																														
3	21st Century Classroom Track	Wed 5/29/19	Mon 11/1/21																														
8	Bid Package 1	Wed 5/29/19	Wed 1/13/21																														
15	[TDM] Los Altos ES (19 CRs)	Tue 7/2/19	Wed 1/13/21																														
24	Los Altos ES Increment #1 (11 Classrooms)	Fri 4/24/20	Thu 7/23/20																														
29	Los Altos ES Increment #2 (4 Classrooms)	Sat 7/18/20	Sun 9/6/20																														
34	Los Altos ES Increment #3 (4 Classrooms)	Sat 9/5/20	Wed 10/21/20																														
40	[SVA] Workman ES (23 CRs)	Wed 5/29/19	Wed 1/13/21																														
48	Workman ES Increment #1 (11 Classrooms)	Fri 4/24/20	Thu 7/23/20																														
53	Workman ES Increment #2 (6 Classrooms)	Sat 7/18/20	Sun 9/6/20																														
58	Workman ES Increment #3 (6 Classrooms)	Sat 9/5/20	Wed 10/21/20																														
64	[TDM] Nelson ES (20 CRs)	Tue 7/2/19	Wed 1/13/21																														
73	Nelson ES Increment #1 (12 Classrooms)	Fri 4/24/20	Thu 7/23/20																														
78	Nelson ES Increment #2 (4 Classrooms)	Sat 7/18/20	Sun 9/6/20																														
83	Nelson ES Increment #3 (4 Classrooms)	Sat 9/5/20	Wed 10/21/20																														
89	Bid Package 2	Fri 6/21/19	Mon 11/1/21																														
96	[HED] Newton MS (25 CRs)	Fri 6/21/19	Mon 11/1/21																														
105	Newton MS Increment #1 (4 Classrooms)	Sat 10/10/20	Fri 11/27/20																														
110	Newton MS Increment #2 (4 Classrooms)	Sat 11/21/20	Mon 1/11/21																														
115	Newton MS Increment #3 (4 Classrooms)	Sat 1/9/21	Thu 2/25/21																														
120	Newton MS Increment #4 (4 Classrooms)	Sat 2/20/21	Sun 4/11/21																														
125	Newton MS Increment #5 (4 Classrooms)	Sat 4/10/21	Wed 5/26/21																														
130	Newton MS Increment #6 (4 Classrooms)	Sat 5/22/21	Sat 7/10/21																														
135	Newton MS Increment #7 (1 Classroom)	Sat 7/3/21	Mon 8/9/21																														
141	[HED] Grandview Academy (27 CRs)	Fri 6/21/19	Tue 8/3/21																														
150	Grandview Academy Increment #1 (6 Classrooms)	Sat 10/10/20	Fri 11/27/20																														
155	Grandview Academy Increment #2 (6 Classrooms)	Sat 11/21/20	Mon 1/11/21																														
160	Grandview Academy Increment #3 (6 Classrooms)	Sat 1/9/21	Thu 2/25/21																														
165	Grandview Academy Increment #4 (6 Classrooms)	Sat 2/20/21	Sun 4/11/21																														
170	Grandview Academy Increment #5 (3 Classrooms)	Sat 4/10/21	Tue 5/11/21																														
176	[HED] Sparks MS (16 CRs)	Fri 6/21/19	Mon 4/5/21																														
185	Sparks MS Increment #1 (8 Classrooms)	Sat 10/10/20	Fri 11/27/20																														
190	Sparks MS Increment #2 (8 Classrooms)	Sat 11/21/20	Mon 1/11/21																														
196	[PBK] Cedarlane Academy (26 CRs)	Fri 6/21/19	Tue 8/3/21																														
205	Cedarlane Academy Increment #1 (4 Classrooms)	Sat 10/10/20	Fri 11/27/20																														
210	Cedarlane Academy Increment #2 (4 Classrooms)	Sat 11/21/20	Mon 1/11/21																														
215	Cedarlane Academy Increment #3 (4 Classrooms)	Sat 1/9/21	Thu 2/25/21																														
220	Cedarlane Academy Increment #4 (4 Classrooms)	Sat 2/20/21	Sun 4/11/21																														

IN PROGRESS

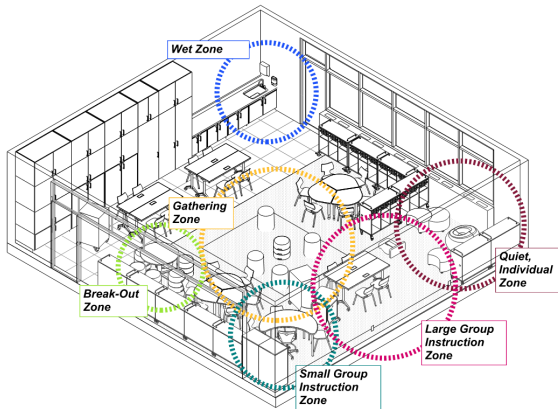
PROCEDURES, PROCESSES & POLICIES:

- Request for construction quotes on Unit Bid Contractors
- Policies and procedures for construction activities
- Procuring furnishings for Pilot Classroom and Phase 1 and Phase 2 classrooms
- Developed and provided technology layout for review by the 21st Century Classroom Project stakeholders
- Developed performance specifications for key technology equipment



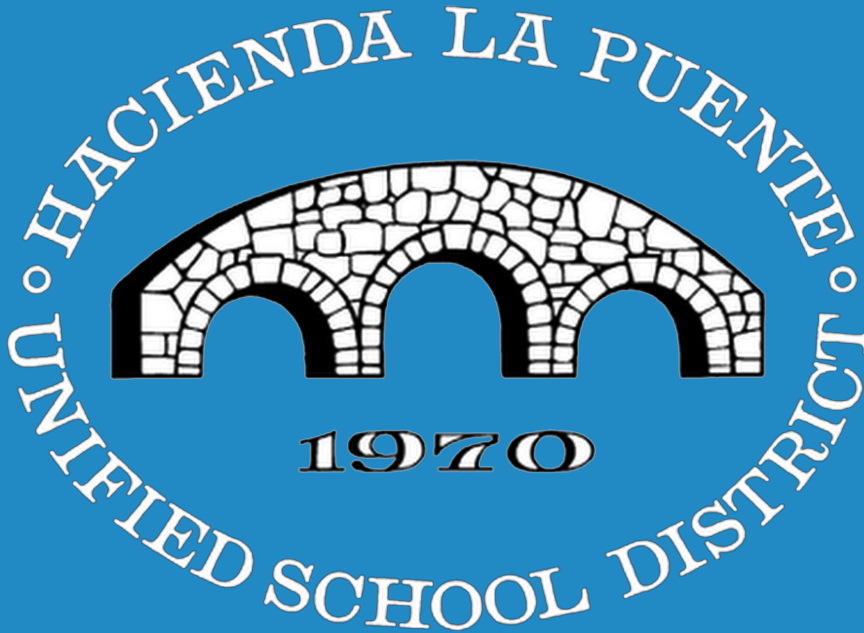
21st CENTURY CLASSROOMS

Grades 1-3 - Scheme 1
Zoning Diagram



NEXT STEPS

- Architectural Fee proposals for Phases 3 and 4 drafted and sent to Facilities Staff for review
- Standard materials list issued to architects
- Interim Housing for Mesa Robles is ready for installation



QUESTIONS & ANSWERS