



COOPERATIVE
STRATEGIES

COMPLETE FINANCIAL & DEMOGRAPHIC PLANNING FOR EDUCATION

**HACIENDA-LA PUENTE
UNIFIED SCHOOL DISTRICT**

TRUSTEE AREA PROCESS

JANUARY 27, 2020



TYPES OF ELECTIONS

AT-LARGE ELECTIONS

Candidates must reside within the District's boundaries and are elected by all the voters who reside in the District's boundaries (Education Code Section 5030(a)). This is the method of election currently used by Hacienda-La Puente Unified School District.

FROM-TRUSTEE AREA ELECTIONS

Candidates must reside in specific geographic areas within the District's boundaries called "Trustee Areas" but are elected by all the voters who reside in the District's boundaries (Education Code Section 5030(c)).

BY-TRUSTEE AREA ELECTIONS

Candidates must reside in specific Trustee Areas within the District's boundaries and are elected only by the voters who reside in the same Trustee Areas (Education Code Section 5030(b)).



BACKGROUND

WHAT IS THE CALIFORNIA VOTING RIGHTS ACT (“CVRA”)?

- Took effect January 1, 2003.
- Prohibits the use of “at-large” elections when such an election system:

“impairs the ability of a protected class to elect candidates of its choice or its ability to influence the outcome of an election....”

-(Elections Code §14027.)

- The Board has taken action to adopt a resolution initiating the transition from at-large to by-area elections.



TRUSTEE AREA PROCESS

Date	Activity
January 27, 2020	Board Meeting: First Pre-Map Public Hearing and Presentation
February 3, 2020	Board Meeting: Second Pre-Map Public Hearing
February 13, 2020	Board Meeting: First Public Hearing on Trustee Area Scenarios Public Hearing on General Waiver Request Board Consideration of General Waiver Request
February 27, 2020	Board Meeting: Second Public Hearing on Trustee Area Scenarios Board Consideration to Narrow Scenarios
March 12, 2020	Board meeting: Final Public Hearing on Trustee Area Scenarios Board Section of Trustee Area Map Board Consideration of Change in Election Method
April / May 2020	County Committee on School District Organization holds a public hearing and Considers Approval of Change in Election Method and Trustee Area Map
May 2020	State Board of Education Meeting; Waiver Application Consideration
May 2020	Cooperative Strategies sends Final Trustee area Map to the County Registrar of Voters
November 2020	First Election Held Utilizing Trustee Areas



CONSIDERATIONS IN TRUSTEE AREAS



Each area shall contain nearly equal number of inhabitants



Follow man-made and natural geographic features, as much as possible



Drawn to comply with the Federal Voting Rights Act



Respect incumbency, if possible



Compact and contiguous, as much as possible



Other local considerations (i.e., school boundaries, locations of school sites)

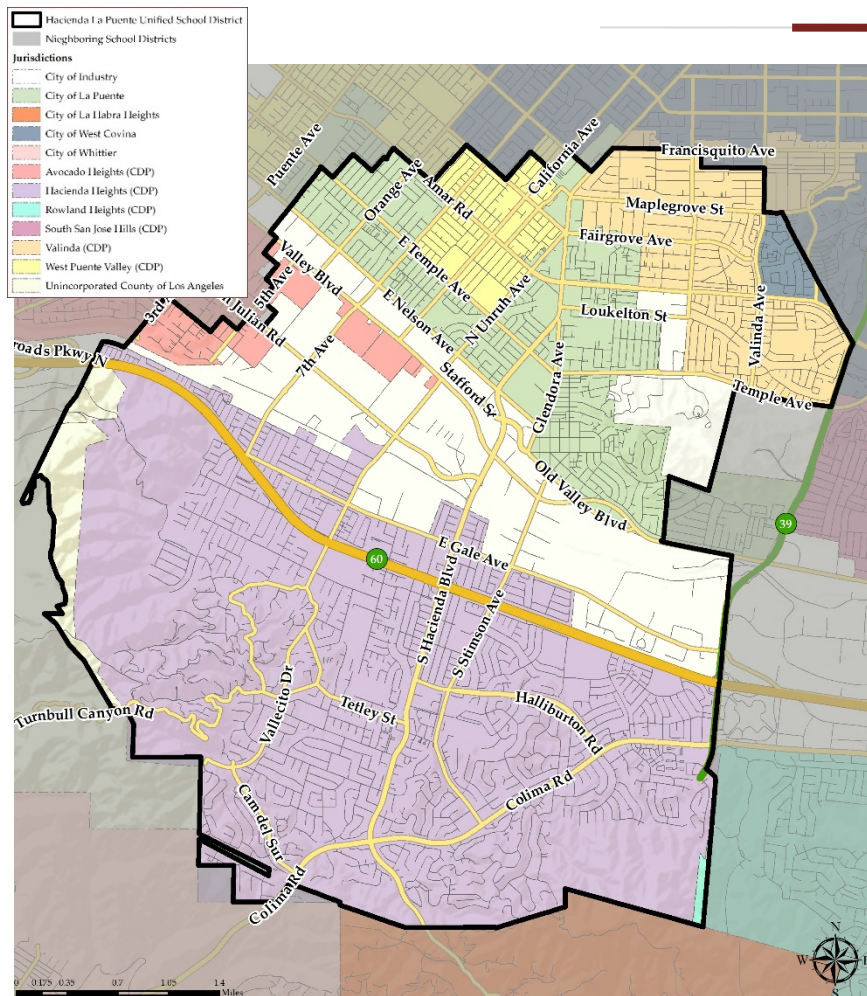


Respect communities of interest, as much as possible



DISTRICT DEMOGRAPHICS

2010 CENSUS DATA



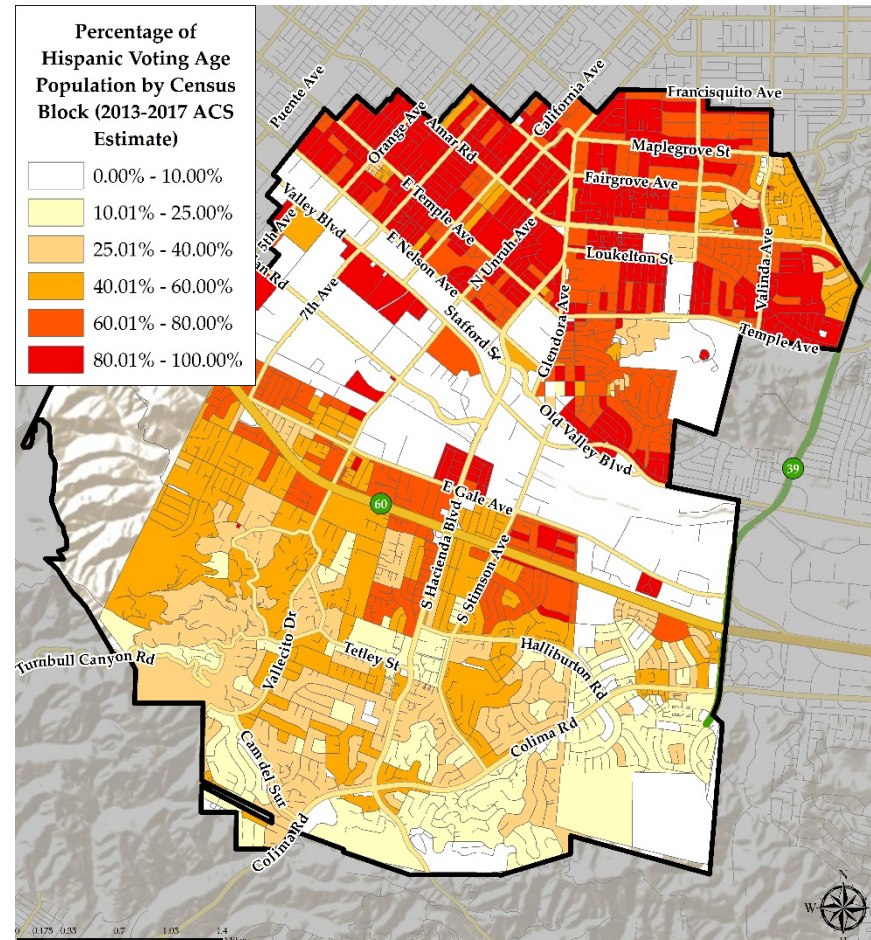
Population	Total Population		Age 18 and over	
	Total	%	Total	%
Hispanic/Latino	75,761	65.03%	52,543	60.50%
White	11,661	10.01%	10,226	11.78%
Black/ African American	1,555	1.33%	1,237	1.42%
American Indian/ Alaska Native	190	0.16%	155	0.18%
Asian	26,032	22.34%	21,770	25.07%
Native Hawaiian/ Pacific Islander	123	0.11%	104	0.12%
Other	143	0.12%	94	0.11%
Two or More Races	1,041	0.89%	715	0.82%
Total Population	116,506	100.00%	86,844	100.00%



DISTRICT DEMOGRAPHICS

CITIZEN VOTING AGE POPULATION ESTIMATES

Population	2013-2017 CVAP	
	Total	%
Hispanic/Latino	45,158	59.93%
White	8,783	11.66%
Black/ African American	1,212	1.61%
American Indian/ Alaska Native	204	0.27%
Asian	19,570	25.97%
Native Hawaiian/ Pacific Islander	75	0.10%
Two or More Races	348	0.46%
Total Population	75,350	100.00%

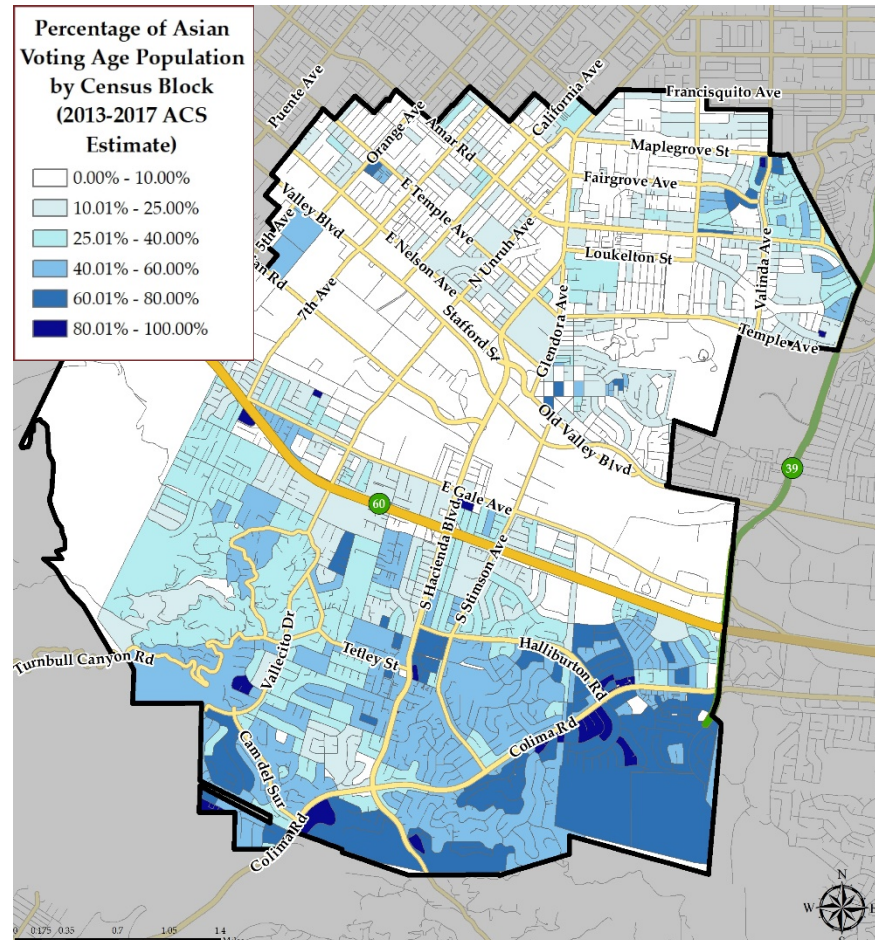




DISTRICT DEMOGRAPHICS

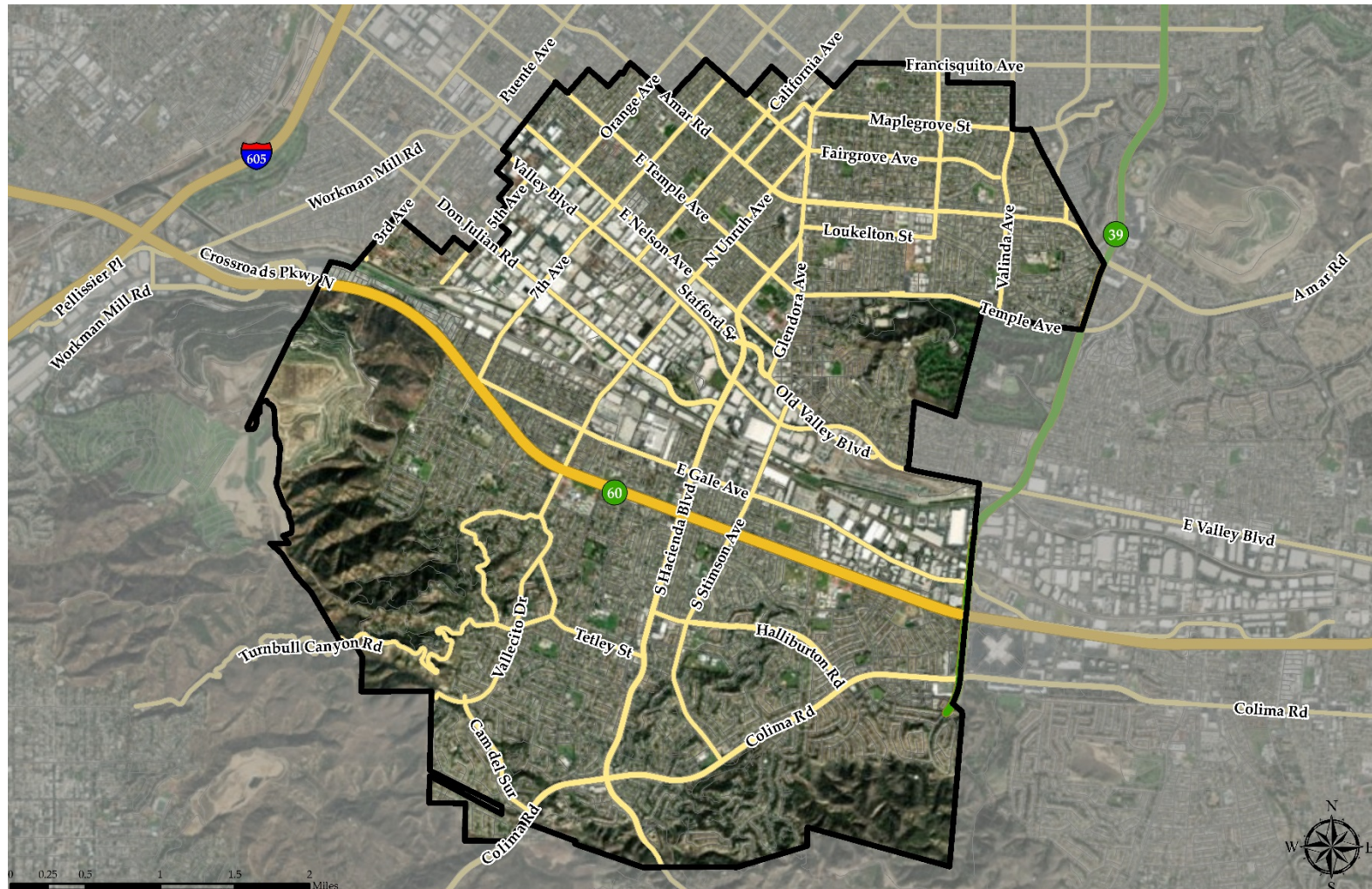
CITIZEN VOTING AGE POPULATION ESTIMATES

Population	2013-2017 CVAP	
	Total	%
Hispanic/Latino	45,158	59.93%
White	8,783	11.66%
Black/ African American	1,212	1.61%
American Indian/ Alaska Native	204	0.27%
Asian	19,570	25.97%
Native Hawaiian/ Pacific Islander	75	0.10%
Two or More Races	348	0.46%
Total Population	75,350	100.00%





HOW SHOULD LINES BE DRAWN?





PRE-MAP PUBLIC HEARING

EXAMPLES OF FEEDBACK FOR MAPPING PROCESS

“I would like to keep Neighborhood X and Neighborhood Y in the same trustee area...”



PRE-MAP PUBLIC HEARING

EXAMPLES OF FEEDBACK FOR MAPPING PROCESS

I think:

- Highway 60
- Hacienda Boulevard
- Valley Boulevard

... may make sense as a trustee area boundary because ...

- It keeps communities together
- It provides good representation



PRE-MAP PUBLIC HEARING

EXAMPLES OF FEEDBACK FOR MAPPING PROCESS

I think:

- All of Y community should be in one area
- Each elementary, middle or high boundary should be in multiple/single areas
- Every trustee area should serve multiple school boundaries/sites

... may make sense as a trustee area boundary because ...

- It keeps communities together
- It provides good representation



QUESTIONS