



COOPERATIVE
STRATEGIES

COMPLETE FINANCIAL & DEMOGRAPHIC PLANNING FOR EDUCATION

**HACIENDA LA PUENTE
UNIFIED SCHOOL DISTRICT**

**TRUSTEE AREA
CONVERSION PROCESS
PRE-MAP PUBLIC HEARING #2**

FEBRUARY 3, 2020



TYPES OF ELECTIONS

AT-LARGE ELECTIONS

Candidates must reside within a school district's boundaries and are elected by all the voters who reside in the school district's boundaries (Education Code § 5030(a)). This is the method of election currently used by HLPUSD.

FROM-TRUSTEE AREA ELECTIONS

Candidates must reside in specific geographic areas within a school district's boundaries called "Trustee Areas" but are elected by all the voters who reside in the school district's boundaries (Education Code § 5030(c)).

BY-TRUSTEE AREA ELECTIONS

Candidates must reside in specific Trustee Areas within the school district's boundaries and are elected only by the voters who reside in the same Trustee Areas (Education Code § 5030(b)). **This method of election is the only method immune from challenge under the California Voting Rights Act.**



BACKGROUND

WHAT IS THE CALIFORNIA VOTING RIGHTS ACT (“CVRA”)?

- Took effect January 1, 2003.
- Prohibits the use of “at-large” elections when such an election system:

“[I]mpairs the ability of a protected class to elect candidates of its choice or its ability to influence the outcome of an election....”

(Elections Code § 14027.)

“‘Protected class’ means a class of voters who are members of a race, color, or language minority group, as this class is referenced and defined in the federal Voting Rights Act of 1965 (52 U.S.C. Sec. 10301 et seq.).”

(Elections Code § 14026(d).)

- In response to a demand letter, the Board took action on January 21, 2020 to adopt a resolution initiating the transition from at-large to by-area elections for the November 2020 election.



PUBLIC OUTREACH EFFORTS

TRADITIONAL METHODS

- **Letters and Electronic Communication**
 - Sent on 1/23/2020 to all families in English, Spanish and Traditional Chinese
 - Email sent to all staff on 1/23/2020
 - School Messenger Calls to HLPUSD on multiple occasions
 - Marquees districtwide posting information on public hearings
- **Postcards**
 - Printed and to be mailed to all addresses in HLPUSD
- **Media Releases**
 - Press release in advance of 1/27/2020 meeting
 - Additional advisories and press releases throughout process and in advance of all meetings and map postings
- **Advertising**
 - Legal Ad and Display Ads in Southern California News Group
 - Quarter page ad to be placed in advance of community meetings

The image displays two public outreach materials from Hacienda La Puente Unified School District (HLPUSD). The top material is a flyer titled "By-Trustee Area Election Conversion Process | Get Involved!" and "Proceso de conversión para elección de zona educativa | ¡Participe!". It explains the transition from a large election to a trustee area election starting in 2020. It includes the district's logo, contact information (19919 E. Gale Ave., City of Industry, CA 91745), and social media handles (@HLPUSD). The bottom material is a bilingual meeting schedule for the District Office Board Room, listing dates and times for public hearings in English, Spanish, and Traditional Chinese. It also includes the district's website, www.hlpsschools.org/cvra.



PUBLIC OUTREACH EFFORTS

HLPUSD'S WEBSITE

- **Creation of CVRA Page on HLPUSD's Website (www.hlpusd.k12.ca.us/cvra)**
 - Information on Conversion Process
 - Contact Information (cvra@hlpusd.k12.ca.us or 626.934.4848)
 - Public Notices
 - Demand Letter and Map
 - Frequently Asked Questions
 - Presentations
 - Notices provided in English, Spanish and Traditional Chinese
 - Accessible via smartphones
 - **Maps to be posted by Thursday, February 6, 2020**
 - *Each school within HLPUSD has been provided with a laptop computer for the front office for parent access to information on this process*

Hacienda La Puente USD

HACIENDA LA PUENTE
UNIFIED SCHOOL DISTRICT

15959 E. Gale Ave., City Of Industry, CA 91745 • 626.933.1000
info@hlpusd.k12.ca.us

HOME DISTRICT STUDENTS STAFF PARENTS COMMUNITY JOBS CVRA

Home / CVRA / California Voting Rights Act (CVRA) Trustee Area Election Conversion Process

CVRA

California Voting Rights Act (CVRA) Trustee Area Election Conversion Process

By-Trustee Area District Formation Process

Hacienda La Puente Unified School District is transitioning from at-large elections to by-trustee area elections. Beginning in 2020, residents will vote for a single Board of Trustee candidate residing in their newly drawn trustee area. The public is invited to provide input on the district formation mapping during public hearings.

California Voting Rights Act (CVRA) Trustee Area Election Conversion Process

You may email any comments or questions to the CVRA Hotline at cvra@hlpusd.k12.ca.us. You may also comment by telephone at (626) 934-4848.

NOTICE OF PUBLIC HEARING
HACIENDA LA PUENTE UNIFIED SCHOOL DISTRICT

NOTICE IS HEREBY GIVEN that a public hearing will be held by the Board of Education of the Hacienda La Puente Unified School District as part of the conversion to a trustee-area election system in accordance with Section 10010 of the California Elections Code. The purpose of the public hearing is to receive public comments concerning the composition of potential trustee voting areas associated with the District's conversion from its current at-large method of election to a trustee-area election system in advance of the preparation of draft trustee voting area map(s) by the District's demographer.

THEREFORE, PLEASE TAKE NOTICE THAT a public hearing will be held before the Board of Education of the Hacienda La Puente Unified School District as follows:

Date: Monday, February 3, 2020
Place: District Office - Board Room 15959 E. Gale Avenue, City of Industry, CA 91745
Time: 6:00 p.m.

Please contact the Superintendent's Office at (626) 933-3801, if you require more information prior to the Public Hearing.

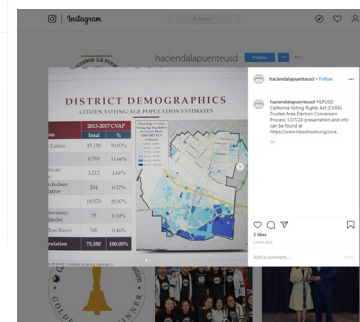
- Hacienda Demand Letter (12/1/2019) (PDF)
- Perez Demographers CV (PDF)
- Perez Proposed Map (PDF)
- HLPUSD CVRA Notice of Public Hearing-PreMap1 - REV (PDF)
- Resolution of Intent to Initiate Process of Establishing Trustee Areas (PDF)
- HLPUSD CVRA Letter to Community - English (PDF)
- HLPUSD CVRA Letter to Community - Spanish (PDF)
- HLPUSD CVRA Letter to Community - Chinese (PDF)
- Media Release - 01.24.20 Hacienda La Puente Unified Seeks Community Input on Board of Education Election Conversion (PDF)
- Media Release - 01.24.20, 港島區選舉制度轉上尋求社區民意 (PDF)



PUBLIC OUTREACH EFFORTS

SOCIAL MEDIA

- **Social Media Messaging (Facebook, Twitter, Instagram, etc.)**
 - **CVRA page announcement (1/23/2020):** Message and link posted in English (with advertising funds on Facebook to reach all users in Hacienda La Puente Unified). Updated on 1/24/2020 with Spanish and Traditional Chinese
 - **Community letter (1/24/2020):** Message and link posted in English, Spanish and Traditional Chinese (with advertising funds on Facebook to reach all users in Hacienda La Puente Unified)
 - **Press release on 1/27/2020 public hearing (1/24/2020):** Posted link in English (with advertising funds on Facebook to reach all users in Hacienda La Puente Unified)
 - **Press release on 2/3/2020 public hearing (1/31/2020):** Posted link in English (with advertising funds on Facebook to reach all users in Hacienda La Puente Unified)
 - More as the process continues...





TRUSTEE AREA PROCESS

| Date | Activity |
|-------------------|--|
| January 27, 2020 | Board Meeting: First Pre-Map Public Hearing and Presentation |
| February 3, 2020 | Board Meeting: Second Pre-Map Public Hearing |
| February 13, 2020 | Board Meeting: First Public Hearing on Trustee Area Scenarios Public Hearing on General Waiver Request Board Consideration of General Waiver Request |
| February 27, 2020 | Board Meeting: Second Public Hearing on Trustee Area Scenarios Board Consideration to Narrow Scenarios |
| March 12, 2020 | Board meeting: Final Public Hearing on Trustee Area Scenarios Board Section of Trustee Area Map Board Consideration of Change in Election Method |
| April / May 2020 | County Committee on School District Organization holds a public hearing and Considers Approval of Change in Election Method and Trustee Area Map |
| May 2020 | State Board of Education Meeting; Waiver Application Consideration |
| May 2020 | Cooperative Strategies sends Final Trustee area Map to the County Registrar of Voters |
| November 2020 | First Election Held Utilizing Trustee Areas |



COMMUNITY INPUT OPPORTUNITIES

| Date | Meeting Type | Location | Time |
|------------------------------|--|---|-------------------|
| Tuesday, February 4, 2020 | DELAC/DAC Meeting | Willow Center Multipurpose Room | 9 a.m. |
| Friday, February 7, 2020 | CVRA Meeting for Student Groups (LCAP Meeting) | District Office – La Puente Conference Room | 10 a.m. to 1 p.m. |
| Tuesday, February 18, 2020 | Public Input Meeting | To be announced | 6 p.m. |
| Wednesday, February 19, 2020 | Public Input Meeting | To be announced | 6 p.m. |
| Thursday, February 20, 2020 | Public Input Meeting | To be announced | 6 p.m. |
| Friday, February 21, 2020 | Public Input Meeting | To be announced | 6 p.m. |
| Saturday, February 22, 2020 | Public Input Meeting | To be announced | 10 a.m. |



TRUSTEE AREA PROCESS

ELECTION WAIVER

- The requirement that a change in election method for a school district be approved by the voters can be waived by the State Board of Education.
- HLPUSD is pursuing the waiver for the following beneficial reasons:
 - It is the only way to have trustee area elections begin in November 2020; without the waiver, the conversion would not go into effect until 2022
 - The waiver eliminates the cost of placing the question on the ballot.
 - It eliminates the risk of exposure to potential litigation; if HLPUSD did not pursue the waiver and the voters did not approve the conversion, HLPUSD would still have potential liability under the CVRA.
- Prior to requesting a waiver, HLPUSD is required to solicit feedback from its exclusive representatives of employees and school district advisory councils.
- HLPUSD is also required to conduct a public hearing before the waiver request is approved by the HLPUSD Board of Education.



MAP DRAWING REQUIREMENTS

Goal is to prevent “Racially Polarized Voting.” (Cal. Elec. Code, §§ 14026-27.) California, Federal, and case law have identified mapping factors. Key laws include California Elections Code § 22000 and Title 52, United States Code § 10301.



Each area shall contain nearly equal number of inhabitants (up to ~10% variance; *White v. Register*, 412 U.S. 755 (1973))



Follow topography and man-made and natural geographic features, as much as possible



Drawn to comply with the Federal Voting Rights Act



Respect incumbency, if possible; *Bush v. Vera*, (512 U.S. 952 (1996).)



Compact, contiguous, cohesive, and integrity, as much as possible



Other local considerations (i.e., school boundaries, locations of school sites)



Respect communities of interest, as much as possible



INAPPLICABLE MAP DRAWING REQUIREMENTS

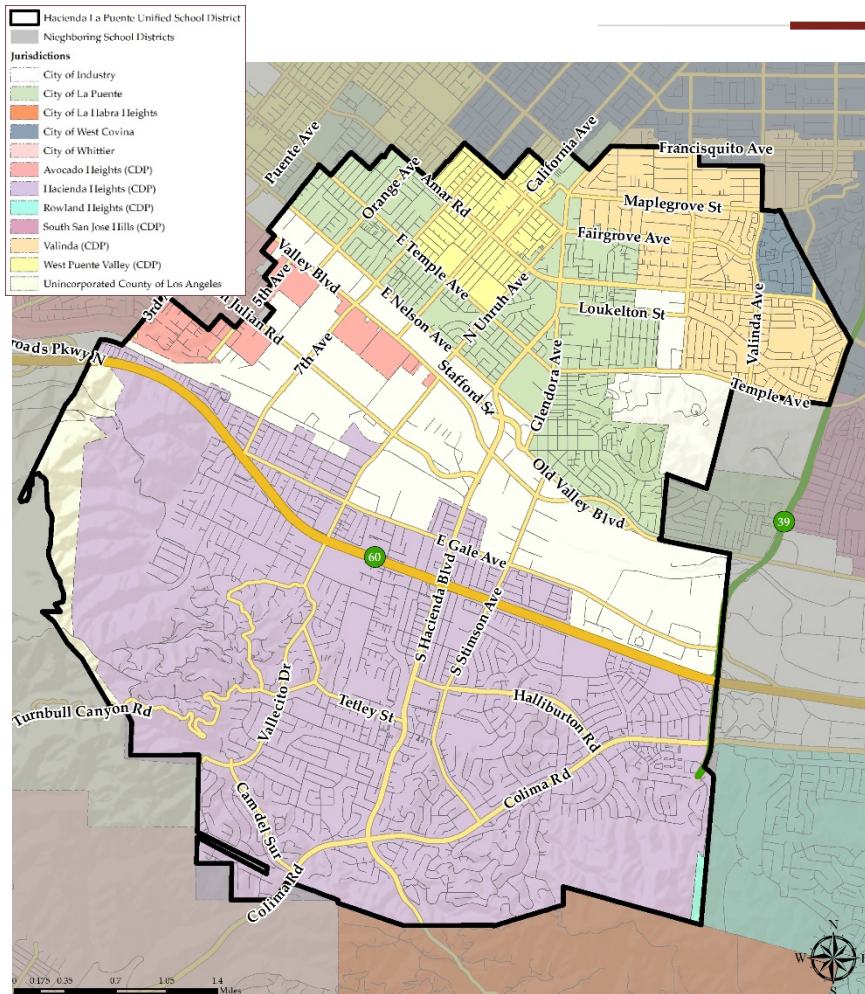
FAIR MAPS ACT (ASSEMBLY BILL 849)

- Assembly Bill 849, “Fair And Inclusive Redistricting of Municipalities and Political Subdivisions (Fair Maps) Act” was enacted on October 8, 2019 but does not apply to HLPUSD’s election conversion process—it only applies to cities and counties.
- The bill specifically notes in its introduction, “Existing law establishes criteria and procedures pursuant to which *cities and counties* adjust or adopt council and supervisorial district area boundaries, as applicable for the purpose of electing members of the governing body of each of those local jurisdictions. [¶] This bill would revise and recast these provisions.”
- Additionally, this is confirmed in the bill’s last Assembly Floor Analysis of September 4, 2019, which states, “State laws governing redistricting for local agencies vary depending on the level of government for instance, *different rules apply to school districts....* [¶] This bill seeks to standardize redistricting procedures and requirements for *counties and cities....*”



HLPUSD'S DEMOGRAPHICS

2010 CENSUS DATA



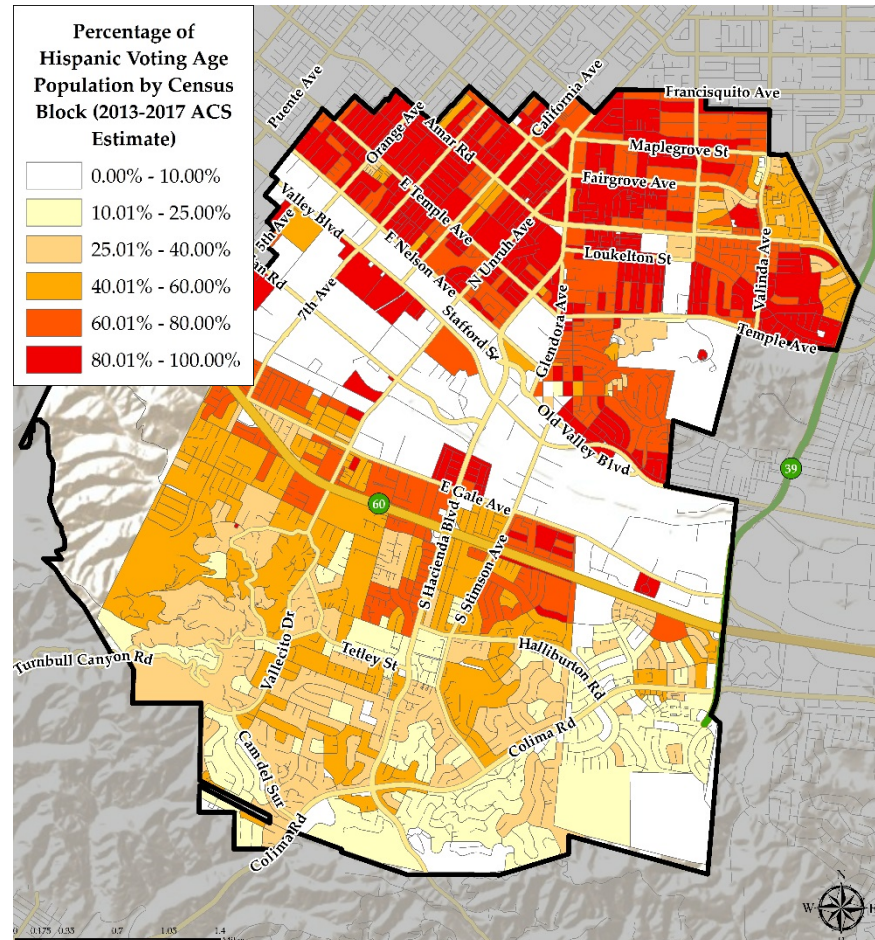
| Population | Total Population | | Age 18 and over | |
|-----------------------------------|------------------|----------------|-----------------|----------------|
| | Total | % | Total | % |
| Hispanic/Latino | 75,761 | 65.03% | 52,543 | 60.50% |
| White | 11,661 | 10.01% | 10,226 | 11.78% |
| Black/ African American | 1,555 | 1.33% | 1,237 | 1.42% |
| American Indian/ Alaska Native | 190 | 0.16% | 155 | 0.18% |
| Asian | 26,032 | 22.34% | 21,770 | 25.07% |
| Native Hawaiian/ Pacific Islander | 123 | 0.11% | 104 | 0.12% |
| Other | 143 | 0.12% | 94 | 0.11% |
| Two or More Races | 1,041 | 0.89% | 715 | 0.82% |
| Total Population | 116,506 | 100.00% | 86,844 | 100.00% |



HLPUSD'S DEMOGRAPHICS

CITIZEN VOTING AGE POPULATION ESTIMATES

| Population | 2013-2017 CVAP | |
|-----------------------------------|----------------|----------------|
| | Total | % |
| Hispanic/Latino | 45,158 | 59.93% |
| White | 8,783 | 11.66% |
| Black/ African American | 1,212 | 1.61% |
| American Indian/ Alaska Native | 204 | 0.27% |
| Asian | 19,570 | 25.97% |
| Native Hawaiian/ Pacific Islander | 75 | 0.10% |
| Two or More Races | 348 | 0.46% |
| Total Population | 75,350 | 100.00% |

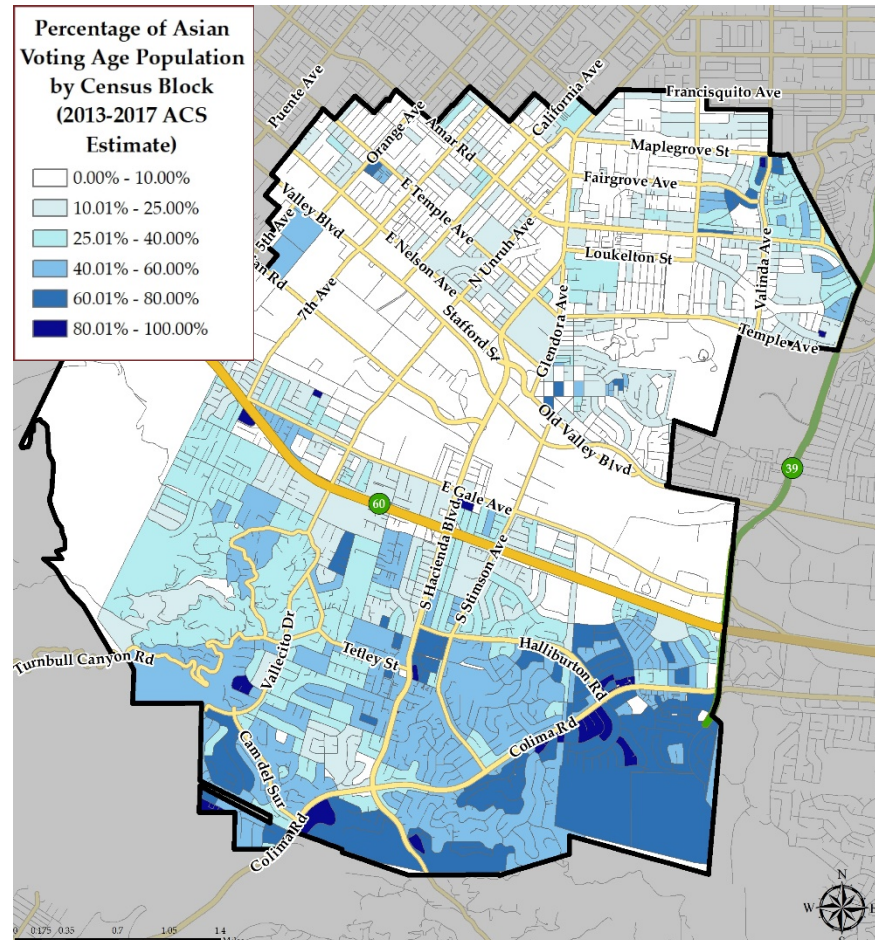




HLPUSD'S DEMOGRAPHICS

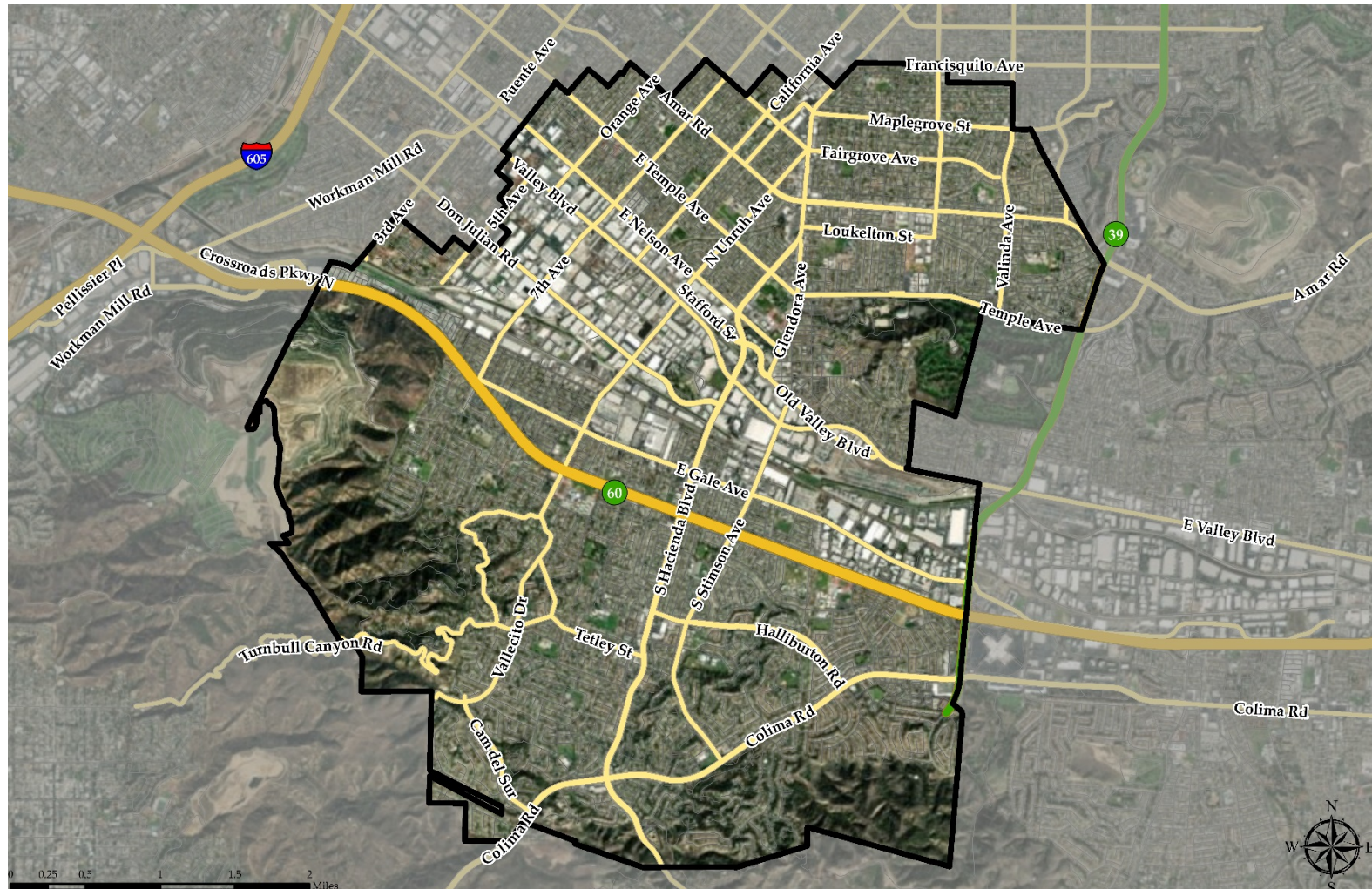
CITIZEN VOTING AGE POPULATION ESTIMATES

| Population | 2013-2017 CVAP | |
|-----------------------------------|----------------|----------------|
| | Total | % |
| Hispanic/Latino | 45,158 | 59.93% |
| White | 8,783 | 11.66% |
| Black/ African American | 1,212 | 1.61% |
| American Indian/ Alaska Native | 204 | 0.27% |
| Asian | 19,570 | 25.97% |
| Native Hawaiian/ Pacific Islander | 75 | 0.10% |
| Two or More Races | 348 | 0.46% |
| Total Population | 75,350 | 100.00% |





HOW SHOULD LINES BE DRAWN?





PRE-MAP PUBLIC HEARING

EXAMPLES OF FEEDBACK FOR MAPPING PROCESS

“I would like to keep Neighborhood X and Neighborhood Y in the same trustee area...”



PRE-MAP PUBLIC HEARING

EXAMPLES OF FEEDBACK FOR MAPPING PROCESS

I think:

- Highway 60
- Hacienda Boulevard
- Valley Boulevard

... may make sense as a trustee area boundary because ...

- It keeps communities together
- It provides good representation



PRE-MAP PUBLIC HEARING

EXAMPLES OF FEEDBACK FOR MAPPING PROCESS

I think:

- All of Y community should be in one area
- Each elementary, middle or high boundary should be in multiple/single areas
- Every trustee area should serve multiple school boundaries/sites

... may make sense as a trustee area boundary because ...

- It keeps communities together
- It provides good representation



QUESTIONS